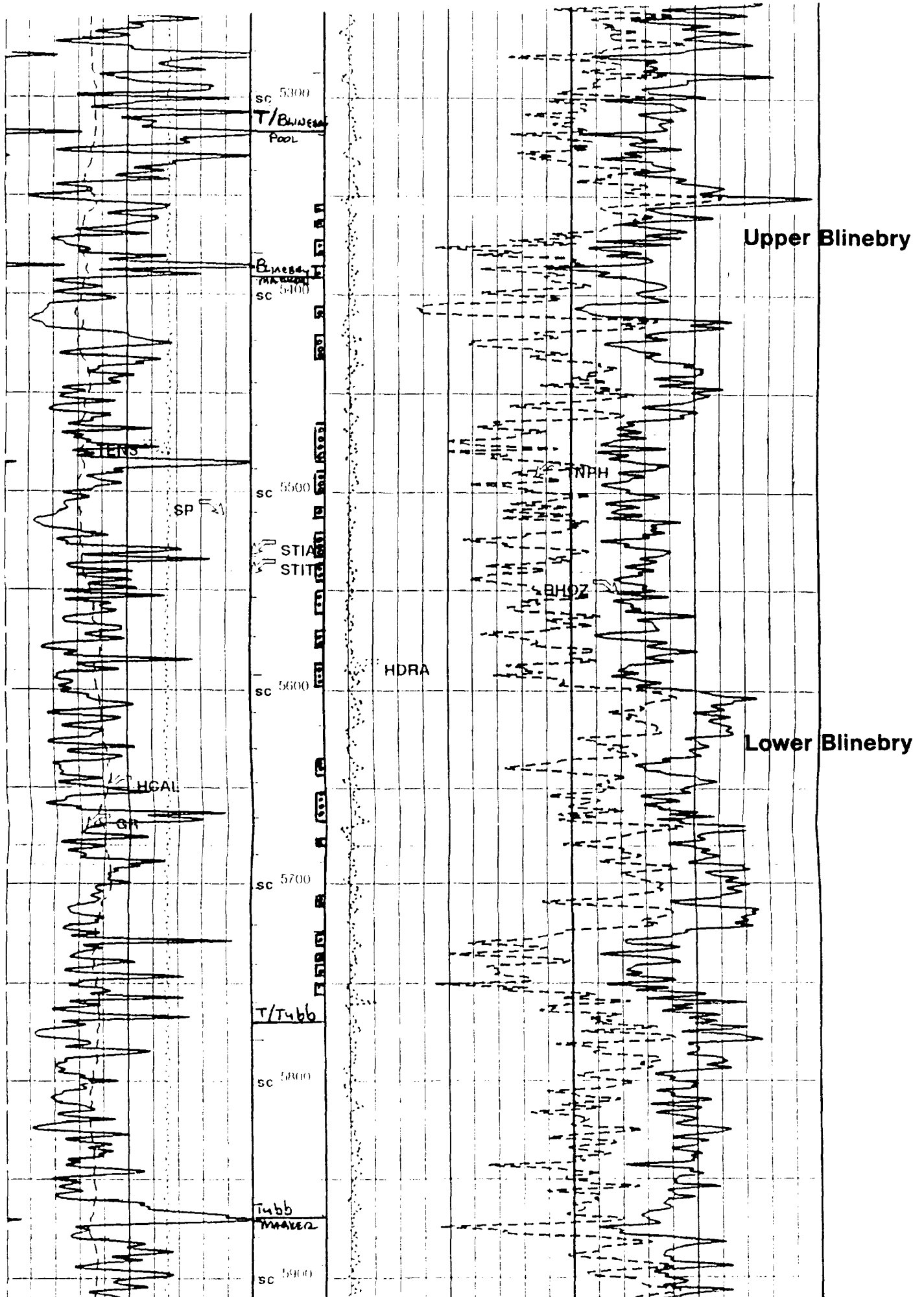


LOU WORTHAN NO. 21

660' FNL & 1350' FEL

SECTION 11, T-22-S, R-37-E

LEA COUNTY, NEW MEXICO



Before The
OIL CONSERVATION COMMISSION
Santa Fe, New Mexico
Case No. 11721 Exhibit No. 9
Submitted by: Marathon Oil Company
Hearing Date: 2/13/97