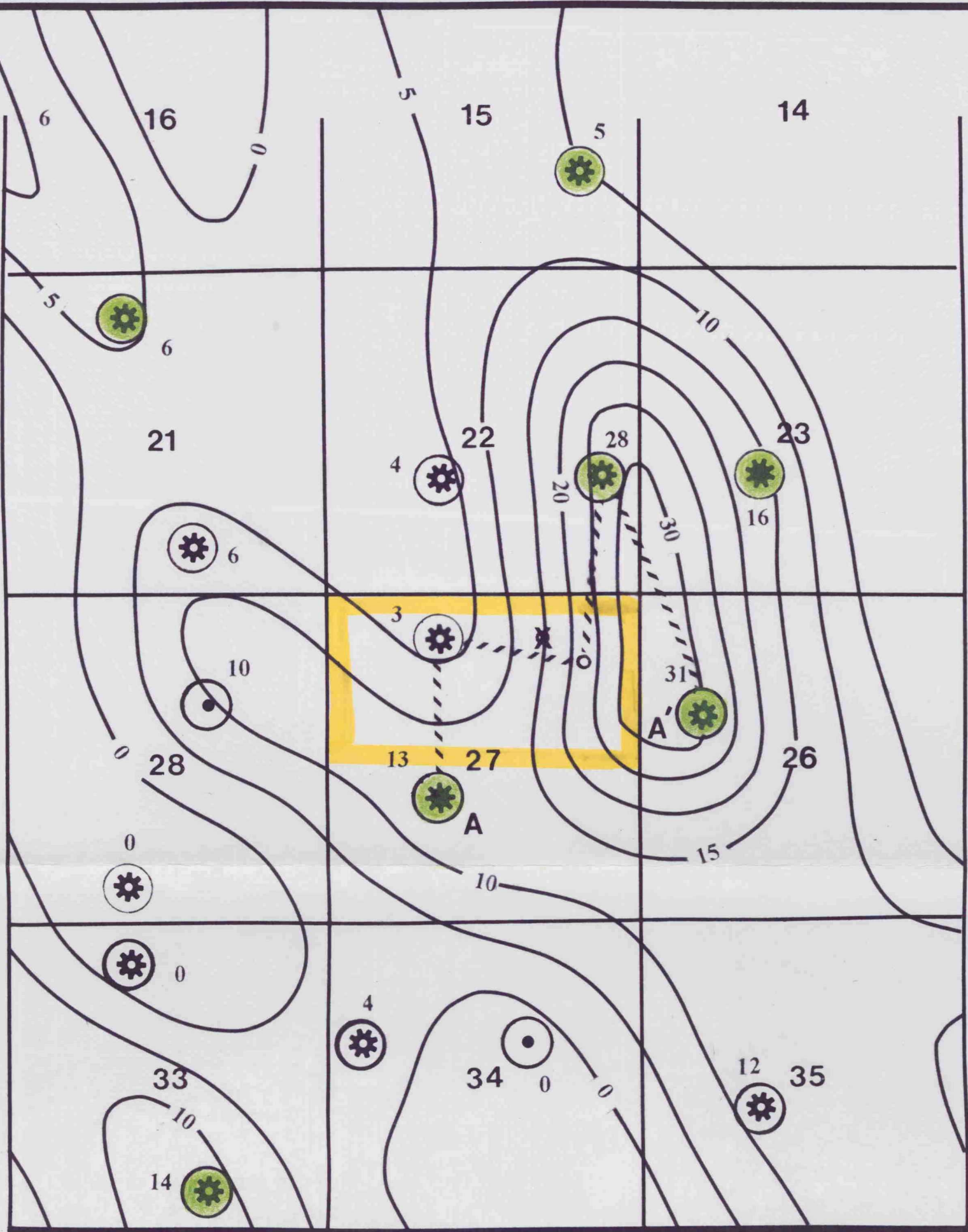


T
1
8
S



R 29 E

C.I. = 5'

New Mexico
Oil Conservation Division

KCS

Exhibit

2

Case No.

11752

KCS MEDALLION RESOURCES, INC.

Empire "A" Federal Com. #2

MIDDLE MORROW PAY SAND
NET POROSITY > 8% ISOPACH

Scale: 1" = 3000'

Geol: D. Shatzer

Date: 3/97