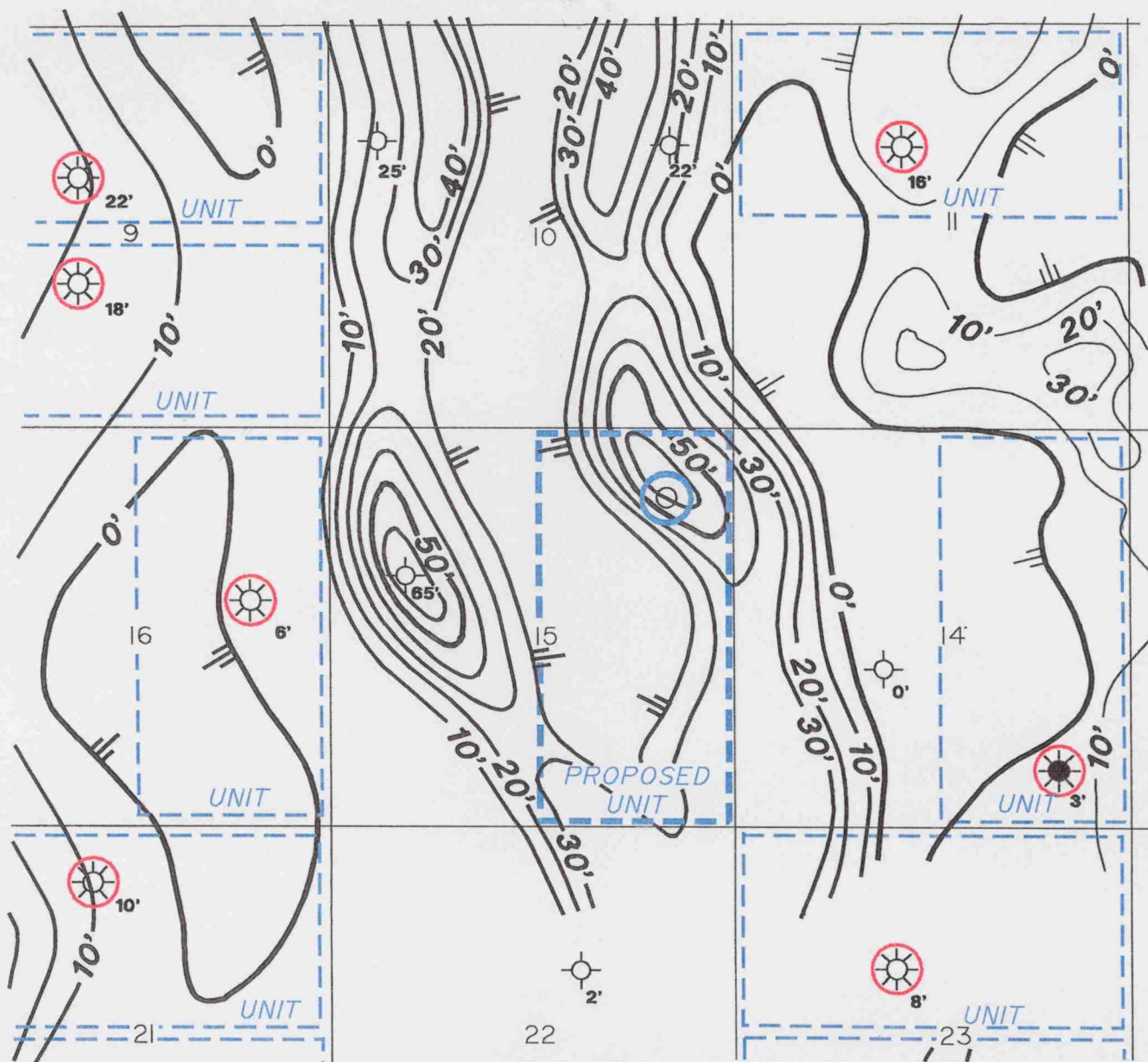




R 28 E

T 18 S



LOWER MORROW SAND  
C.I.: 10'

-  PROPOSED LOCATION
-  MORROW

MARATHON OIL COMPANY  
W.B. TRAVIS 15 STATE COM. #1  
E/2 15 - T18S - R28E  
EDDY CO., NEW MEXICO

BEFORE THE  
OIL CONSERVATION COMMISSION  
Case No. 11775 Exhibit No. 19  
Submitted By:  
Marathon Oil Company  
Hearing Date: May 1, 1997