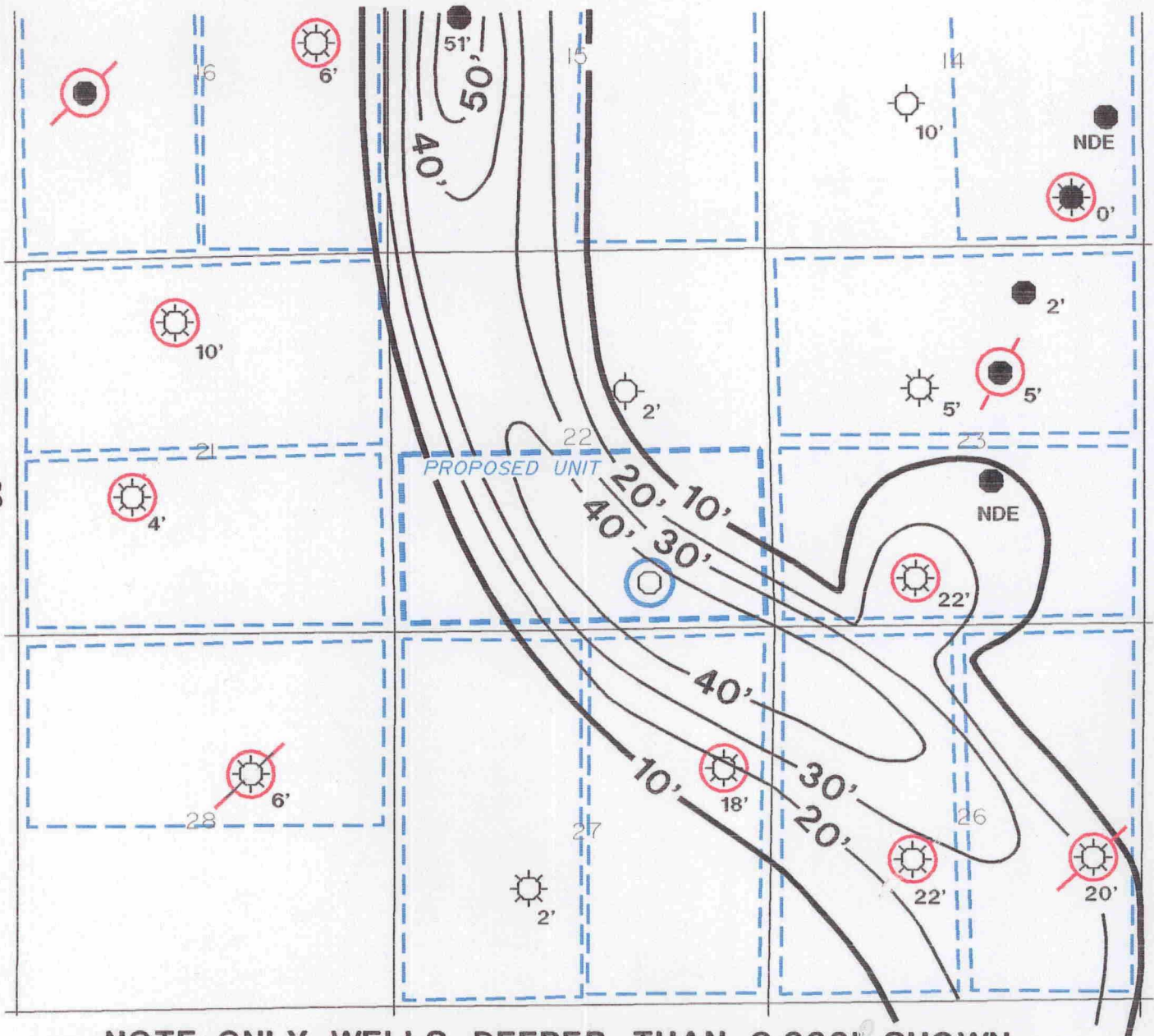


R 28 E

T
18
S



NOTE: ONLY WELLS DEEPER THAN 9,000' SHOWN
LOWER MORROW SAND
C.I.: 10'

BEFORE THE
OIL CONSERVATION COMMISSION
Case No. 11909 Exhibit No. 8
Submitted By:
Marathon Oil Company
Hearing Date: January 22, 1998

MARATHON OIL COMPANY

GARVIN 22 STATE COM. #1

S/2 22 - T18S - R28E

EDDY CO., NEW MEXICO

○ PROPOSED LOCATION

○ MORROW PRODUCER

○ MORROW INACTIVE