

DISTRICT I
P.O. Box 1980, Hobbs, NM 88241-1980

DISTRICT II
P.O. Drawer DD, Artesia, NM 88211-0719

DISTRICT III
1000 Rio Brazos Rd., Artec, NM 87410

DISTRICT IV
P.O. Box 2088, Santa Fe, NM 87504-2088

State of New Mexico
Energy, Minerals and Natural Resources Department

Form C-102
Revised February 10, 1994
Submit to Appropriate District Office
State Lease - 4 Copies
Fee Lease - 3 Copies

OIL CONSERVATION DIVISION
P.O. Box 2088
Santa Fe, New Mexico 87504-2088

☐ AMENDED REPORT

WELL LOCATION AND ACREAGE DEDICATION PLAT

API Number	Pool Code 47545	Pool Name NASH DRAW-BRUSHY CANYON
Property Code 15310	Property Name GOLD RUSH "30" FEDERAL	Well Number 8
OGRID No. 014007	Operator Name MARALO, INC.	Elevation 3083

Surface Location

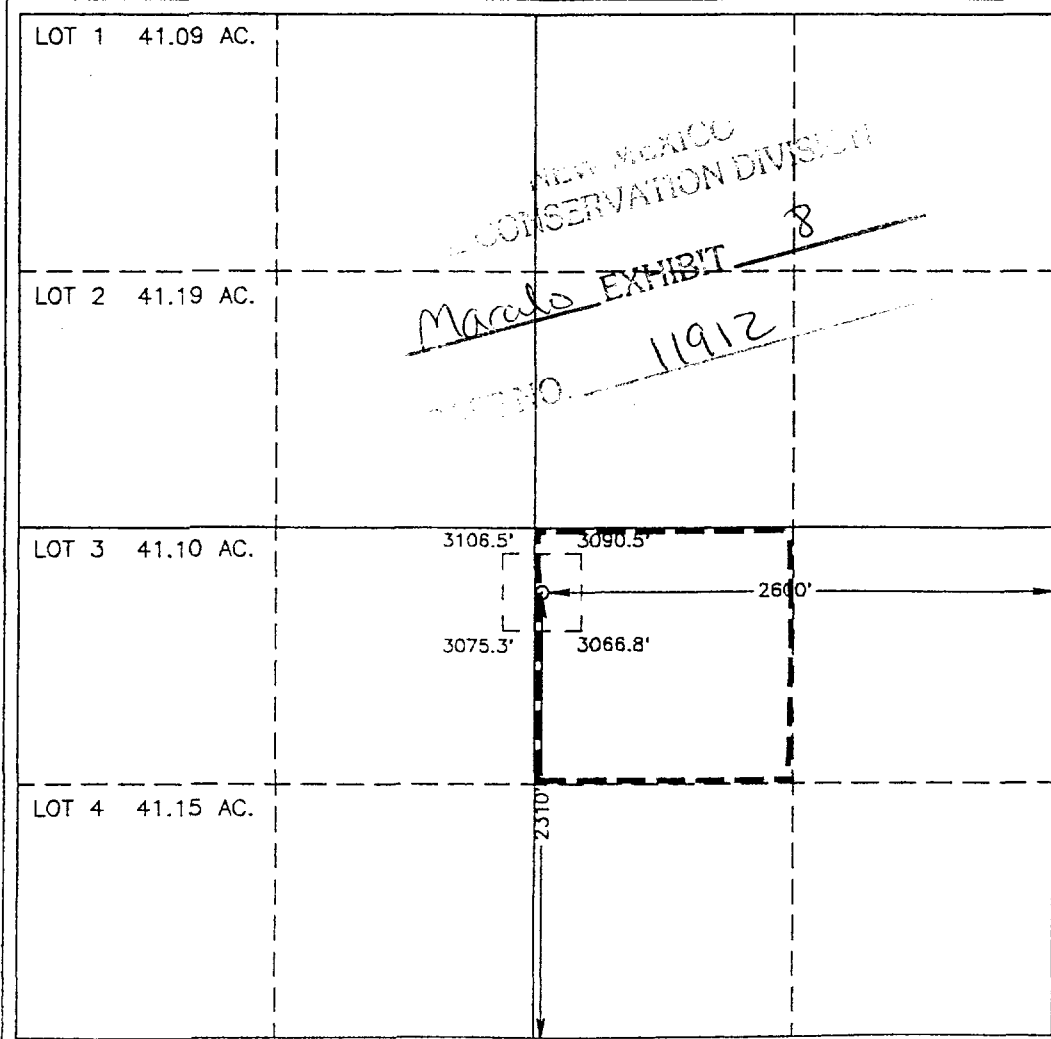
UL or lot No. J	Section 30	Township 23 S	Range 30 E	Lot Idn	Feet from the 2310	North/South line SOUTH	Feet from the 2600	East/West line EAST	County EDDY
--------------------	---------------	------------------	---------------	---------	-----------------------	---------------------------	-----------------------	------------------------	----------------

Bottom Hole Location If Different From Surface

UL or lot No.	Section	Township	Range	Lot Idn	Feet from the	North/South line	Feet from the	East/West line	County
---------------	---------	----------	-------	---------	---------------	------------------	---------------	----------------	--------

Dedicated Acres 40	Joint or Infill	Consolidation Code	Order No.
-----------------------	-----------------	--------------------	-----------

NO ALLOWABLE WILL BE ASSIGNED TO THIS COMPLETION UNTIL ALL INTERESTS HAVE BEEN CONSOLIDATED
OR A NON-STANDARD UNIT HAS BEEN APPROVED BY THE DIVISION



OPERATOR CERTIFICATION	
I hereby certify the information contained herein is true and complete to the best of my knowledge and belief.	
Signature	
Joe T. Janica	
Printed Name	
Agent	
Title	
10/30/97	
Date	
SURVEYOR CERTIFICATION	
I hereby certify that the well location shown on this plat was plotted from field notes of actual surveys made by me or under my supervision, and that the same is true and correct to the best of my belief.	
OCTOBER 27, 1997	
Date Surveyed	
JLP	
Signature & Seal of Professional Surveyor	
W.O. Num. 97-11912-8	
Certificate No. RONALD J. EIDSON, 3239	
PROFESSIONAL SURVEYOR, 12641	