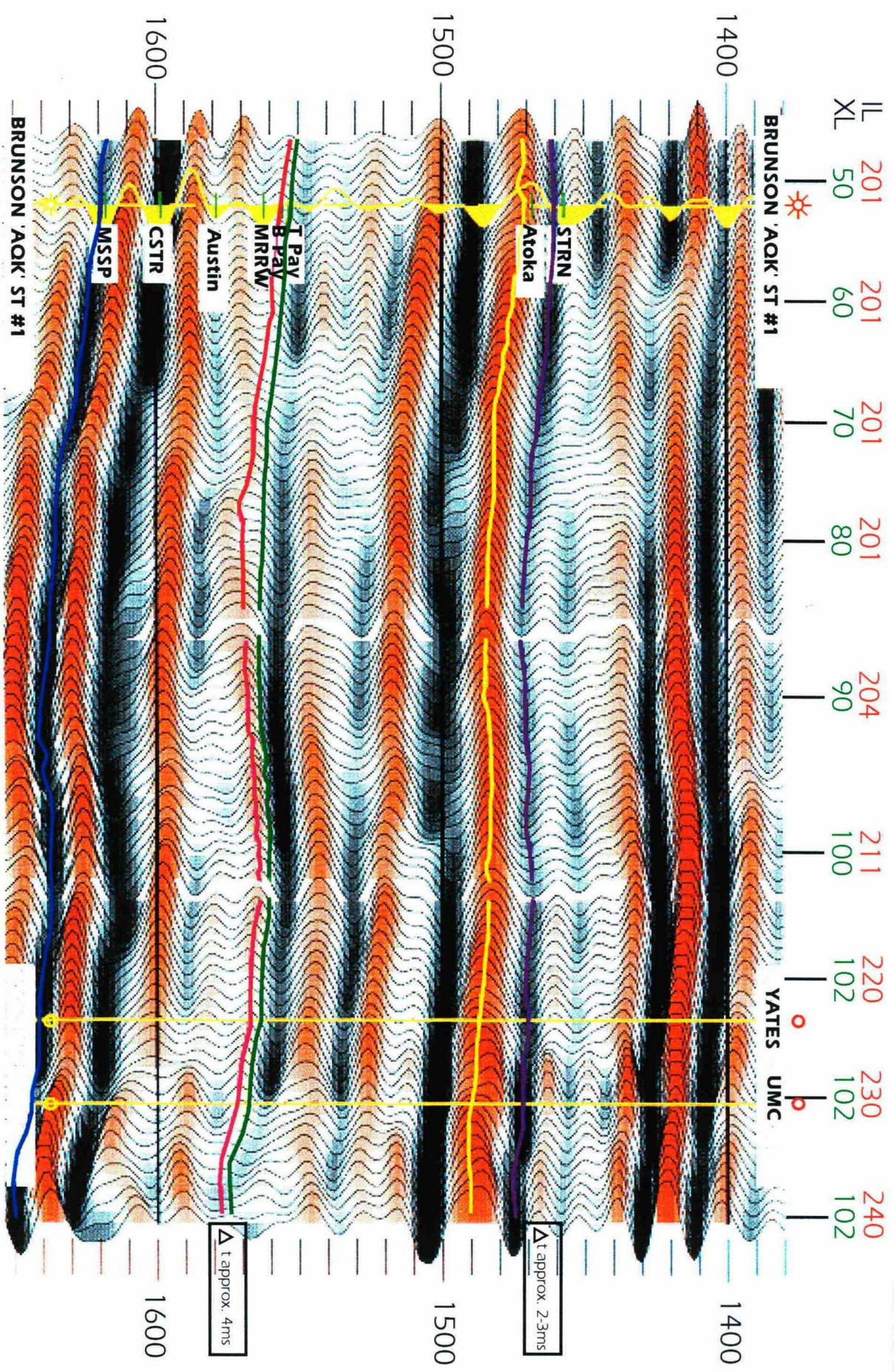


**A**  
**SOUTH**

**A'**  
**EAST**



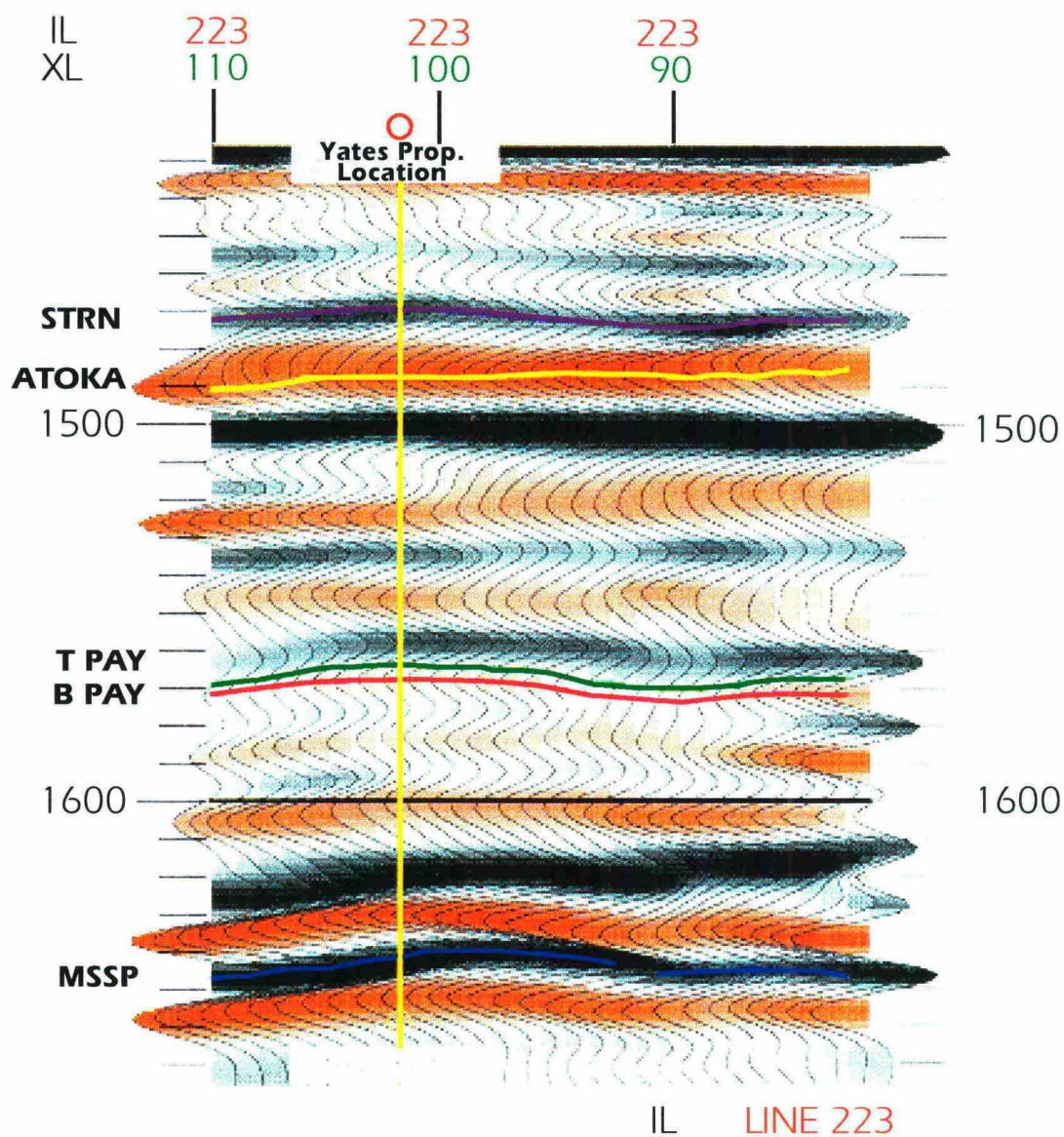
1100'

ARBITRARY LINE A-A'



**B**  
**NORTH**

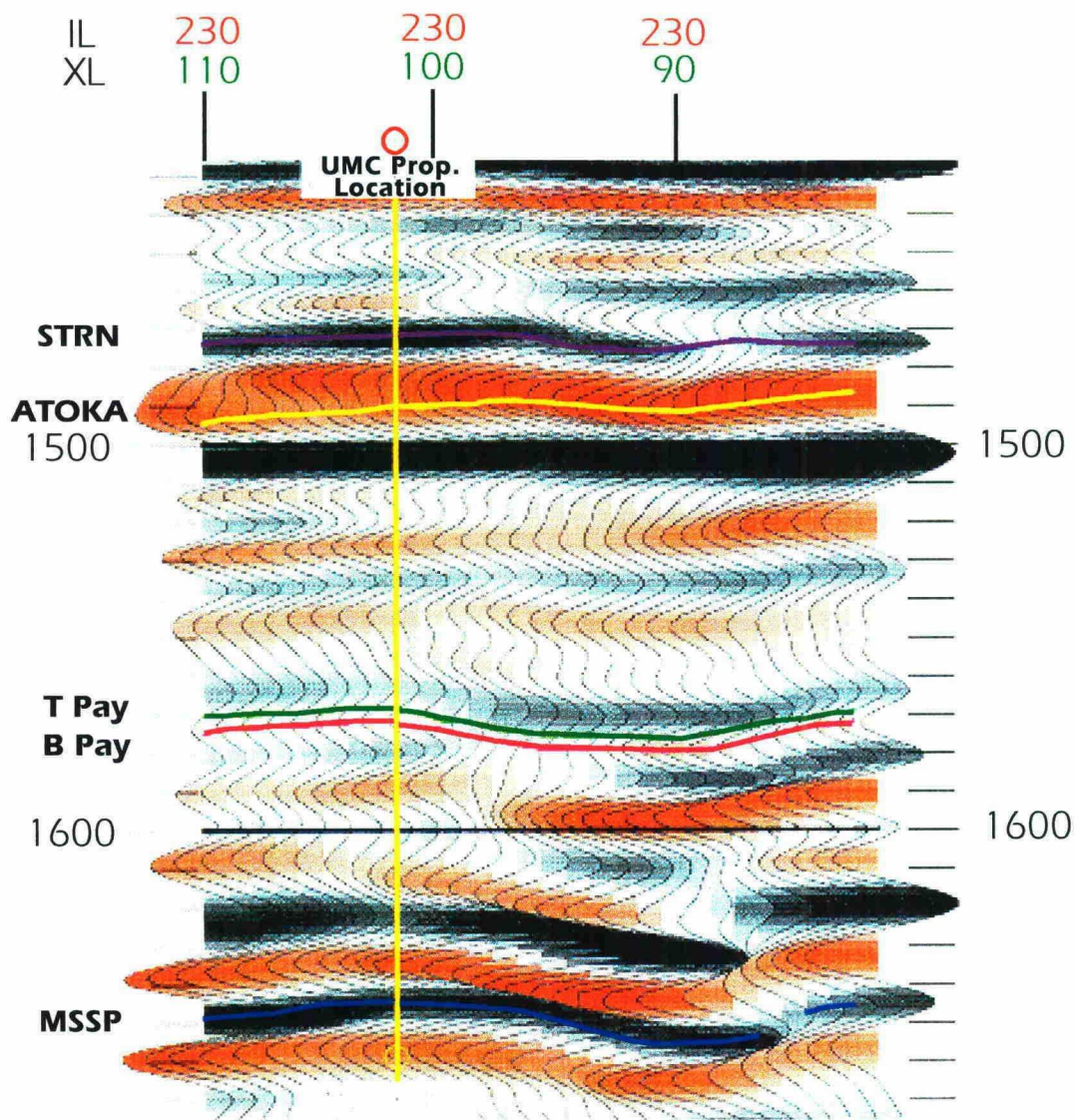
**B'**  
**SOUTH**



1100'

**C**  
**NORTH**

**C'**  
**SOUTH**



IL LINE 230

1100'

**BEFORE THE  
OIL CONSERVATION DIVISION**  
Santa Fe, New Mexico

Case Nos. 11934 (consolidated with 11958 and 11959)  
Exhibit No. 10

Submitted by: Yates Petroleum Corporation  
Hearing Date: May 14, 1998

LARGE FORMAT  
EXHIBIT HAS  
BEEN REMOVED  
AND IS LOCATED  
IN THE NEXT FILE