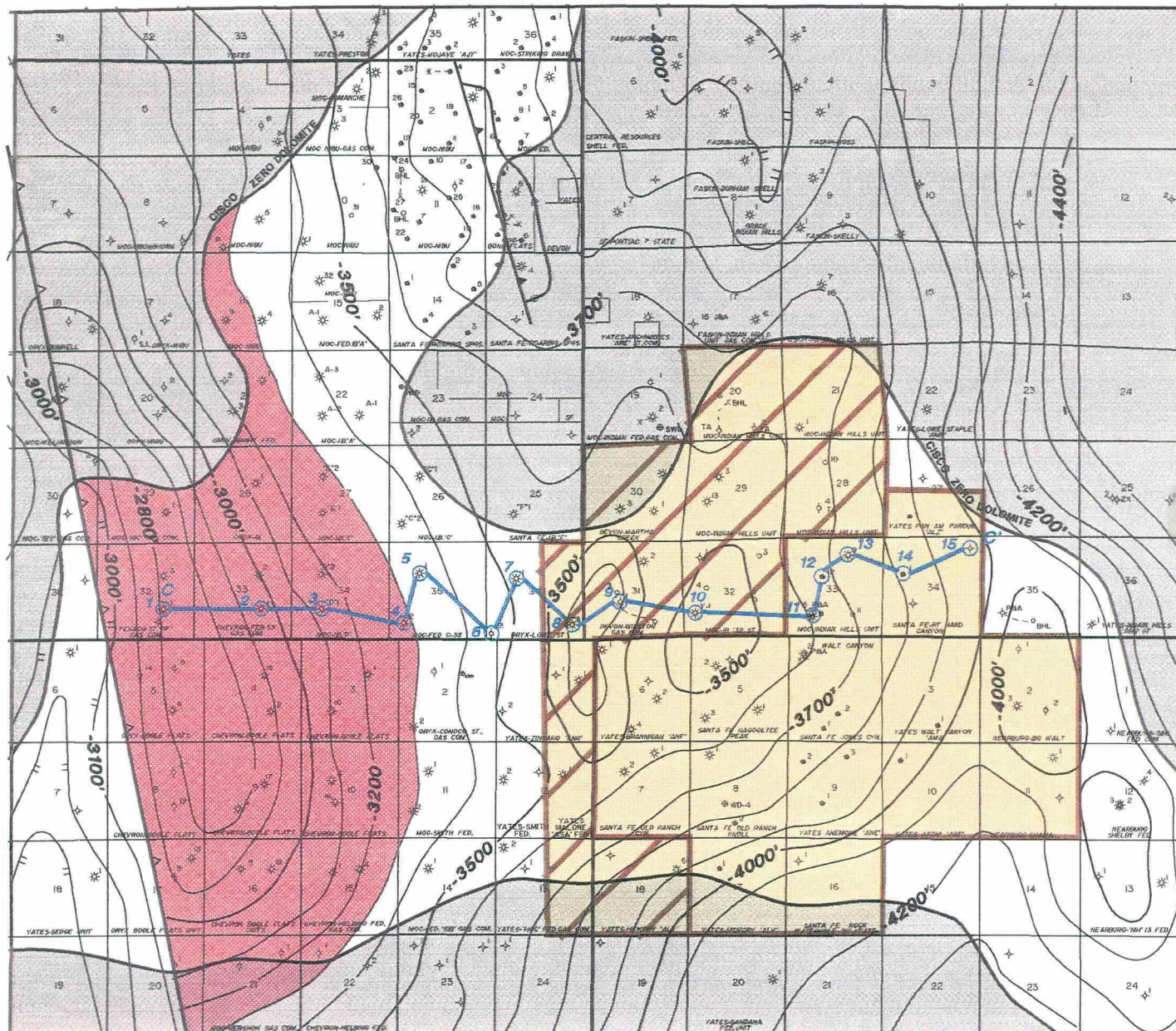


T
21
ST
22
S

R 23 E

R 24 E

- APPROXIMATE EXTENT
CURRENT FLOWING GAS AREA
- UPPER PENN NON-RESERVOIR LIMESTONE
- CURRENT IB UPPER PENN ASSOC. POOL
- PROPOSED EXTENSION ASSOC. POOL

MARATHON OIL COMPANY	MID-CONTINENT REGION
INDIAN BASIN FIELD AREA	
EDDY COUNTY, NEW MEXICO	
T/CISCO CARBONATE STRUCTURE MAP	
(MEMBER IN THE UPPER PENN) C.L. 100'	
ORIGINAL SCALE: 1" = 2000'	DATE: 7/96
AUTHOR: D.COX	REVISED: 5/99
DRAFTED BY:	FILE LOC: EFBAT BNP
	REFRANZ BNP EXPL

BEFORE THE OIL CONSERVATION DIVISION
SANTA FE, NEW MEXICO
MARATHON OIL CO. EXHIBIT NO. 6
CASE NO. 12006
JULY 9, 1998