

QLA 2

Company: Yates Petroleum
Well: Mescal SE #1
Field: Little Box Canyon
County:
State: NM
Country:

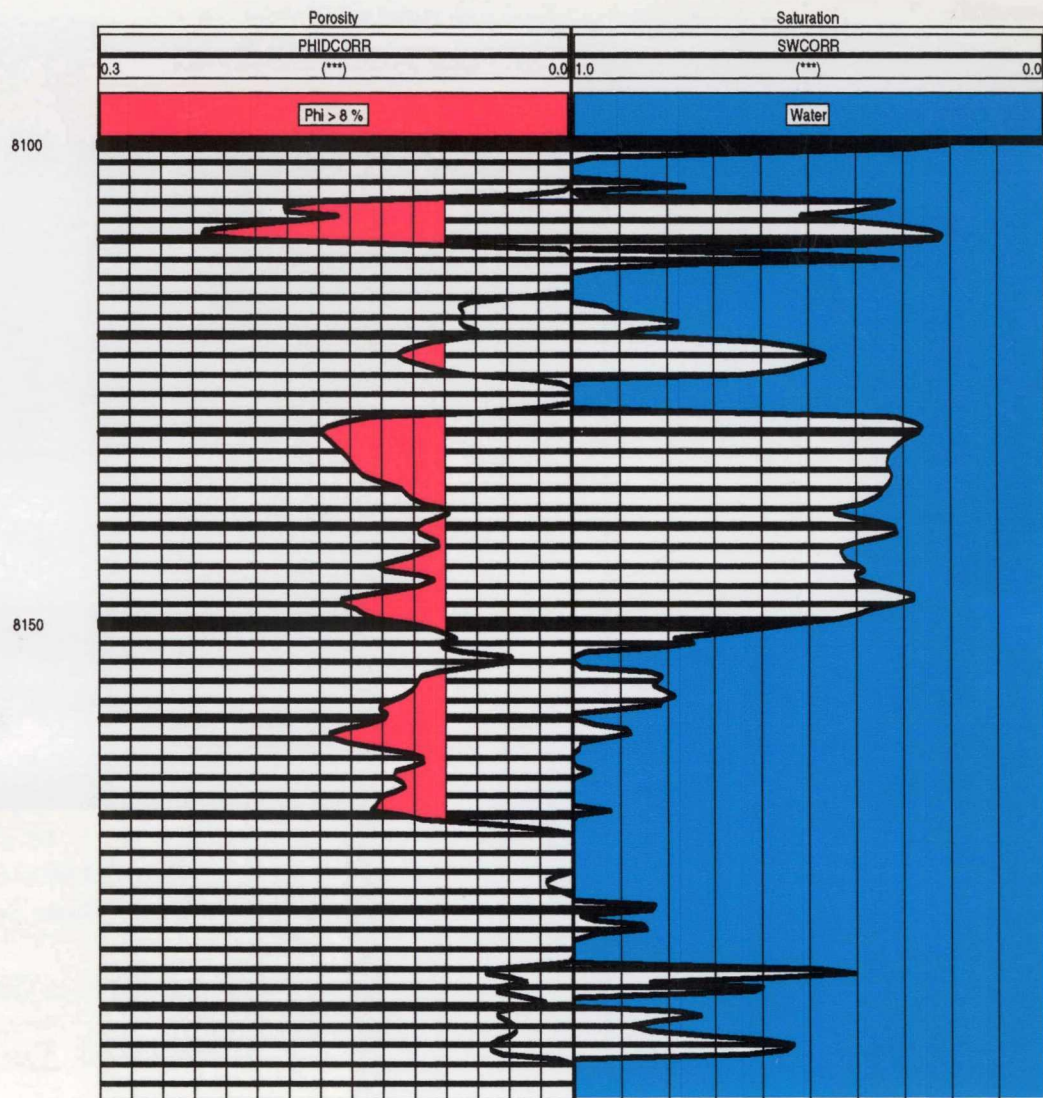
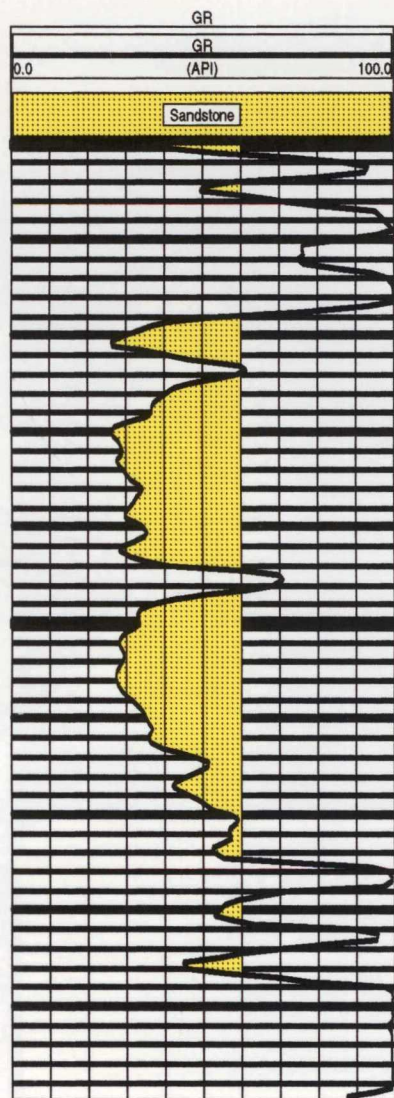
Location: 660' FNL & 1750' FWL S18 T21S R22E
Section: Township: Range: API No.:
Permanent Datum: Elevation: EKB:
Log Measured From: above Perm. Datum EDF:
Drilling Measured From: EGL:

Description	Run 1	Run 2	Run 3	Run 4
Date	1-25-82			
Run Number				
Bit Size				
Type Fluid				
Mud Density				
Mud Viscosity				
Mud pH				
Mud Fluid Loss				
Mud Resistivity				
Mud Sample Temp.				
Mud Filtrate Res.				
Mud Filtrate Temp.				
BHT				
Max Rec Temp				
Rmf at BHT				
Rm at BHT				

Remarks:

Disclaimer:

Interpretations are opinions based upon inferences from electrical or other measurements and algorithms, empirical relationships, and assumptions which are not infallible and with respect to which log analysts may differ. Accordingly, <Company Name> cannot and does not guarantee the accuracy or correctness of any interpretation and shall not be liable or responsible for any losses, costs, damages, or expenses incurred or sustained by anyone resulting from any interpretation made by any of our officers, agents, or employees.



**BEFORE THE
OIL CONSERVATION DIVISION**
Santa Fe, New Mexico

Case No. 12024 Exhibit No. 7

Submitted by: Yates Petroleum Corporation

Hearing Date: August 6, 1998