

HOUSTON, INC.
PRODUCTION LOGGING

INJECTION PROFILE

FILE NO.

COMPANY TEXACO E & P, INC.

WELL VACUUM GLORIETTA WEST UNIT #108

FIELD GLORIETTA

COUNTY LEA STATE NEW MEXICO

LOCATION: 213' FSL & 351' FEL
UNIT LETTER P

SEC. 36 TWP. 17 S RGE. 34 E

PERMANENT DATUM G.L. ELEV. 3986

KB 4000

LOG MEASURED FROM K.B. 14 FT. ABOVE PERM. DATUM

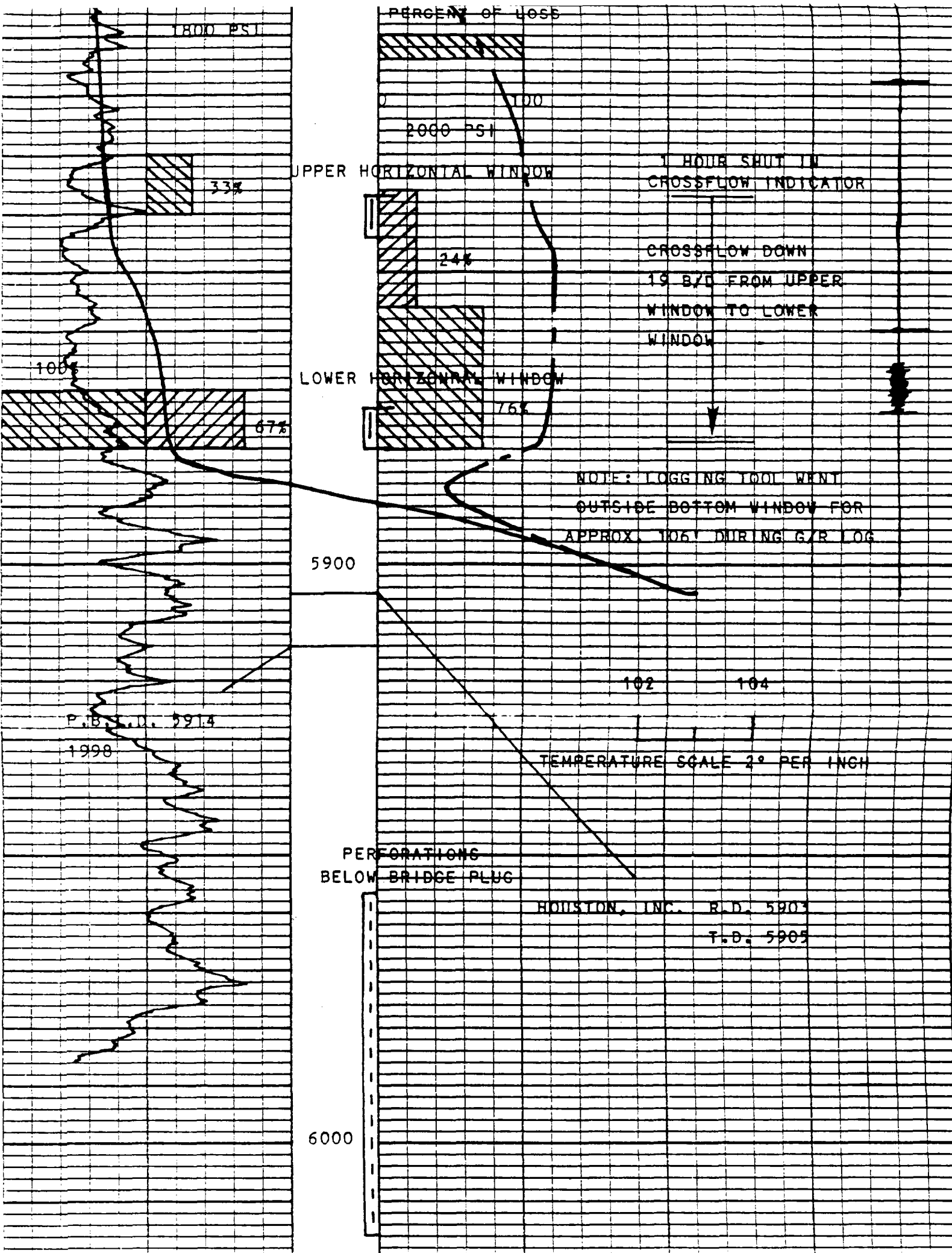
D.F. 3999

DRILLING MEASURED FROM K.B.

G.L. 3996

DATE	<u>9-18-98</u>	
RUN NO.	<u>ONE</u>	
TYPE LOG	<u>INJECTION PROFILE</u>	
DEPTH- DRILLER	<u>6325</u>	
DEPTH - PLUG BACK	<u>5914</u>	
DEPTH - LOGGER	<u>5905</u>	
BOTTOM LOG. INTERVAL	<u>5903</u>	
TOP LOGGED INTERVAL	<u>5700</u>	
RECORDED BY	<u>MARTINEZ</u>	
WITNESSED BY	<u>MR. MENCHEW</u>	
BASE LOCATION	<u>ANDREWS, TEXAS</u>	
TRUCK NO.	<u>101</u>	
EQUIPMENT OPERATOR	<u>JIMENEZ</u>	
OPERATING RIG TIME	<u>MAST UNIT</u>	
OTHER SERVICES	<u>-</u>	

BORE - HOLE RECORD				CASING AND TUBING RECORD			
RUN NO.	BIT	FROM	TO	SIZE	WGT.	FROM	TO
				<u>5 1/2"</u>		<u>0</u>	<u>I.D.</u>
				<u>2 3/8"</u>	<u>CLT</u>	<u>0</u>	<u>5779</u>



HOUSTON, INC.
CORRELATION G/R

5700

PERCENT OF LOSS
STATIONARY VELOCITIES

100

PERCENT OF LOSS

1175 PSI

100

5800

1800 PSI

TRAFER VELOCITIES

PERCENT OF LOSS

0

100

2000 PSI

UPPER HORIZONTAL WINDOW

33%

24%

LOWER HORIZONTAL WINDOW

16%

1 HOUR SHUT IN
CROSSFLOW INDICATOR

CROSSFLOW DOWN
19 BYD FROM UPPER
WINDOW TO LOWER
WINDOW

COLLAR

2 3/8" C.A.L.T.

PACKER

5 1/2" CASING

100%

67%

NOTE: LOGGING TOOL WENT
OUTSIDE BOTTOM WINDOW FOR

**BEFORE THE
OIL CONSERVATION DIVISION**
Santa Fe, New Mexico

Case No. 12123 Exhibit No. 20

Submitted by: Texaco Exploration and Production Inc.

Hearing Date: February 4, 1999