

206-10
=

Geology and Fuel Resources of the Fruitland Formation and Kirtland Shale of the San Juan Basin, New Mexico and Colorado

By JAMES E. FASSETT and JIM S. HINDS

GEOLOGICAL SURVEY PROFESSIONAL PAPER 676

A subsurface and surface study of the coal-bearing Fruitland Formation, the Kirtland Shale, and associated rocks, with emphasis on the relation between regional stratigraphy and the distribution, thickness, and quality of coal

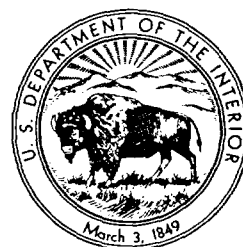


EXHIBIT 6
12193

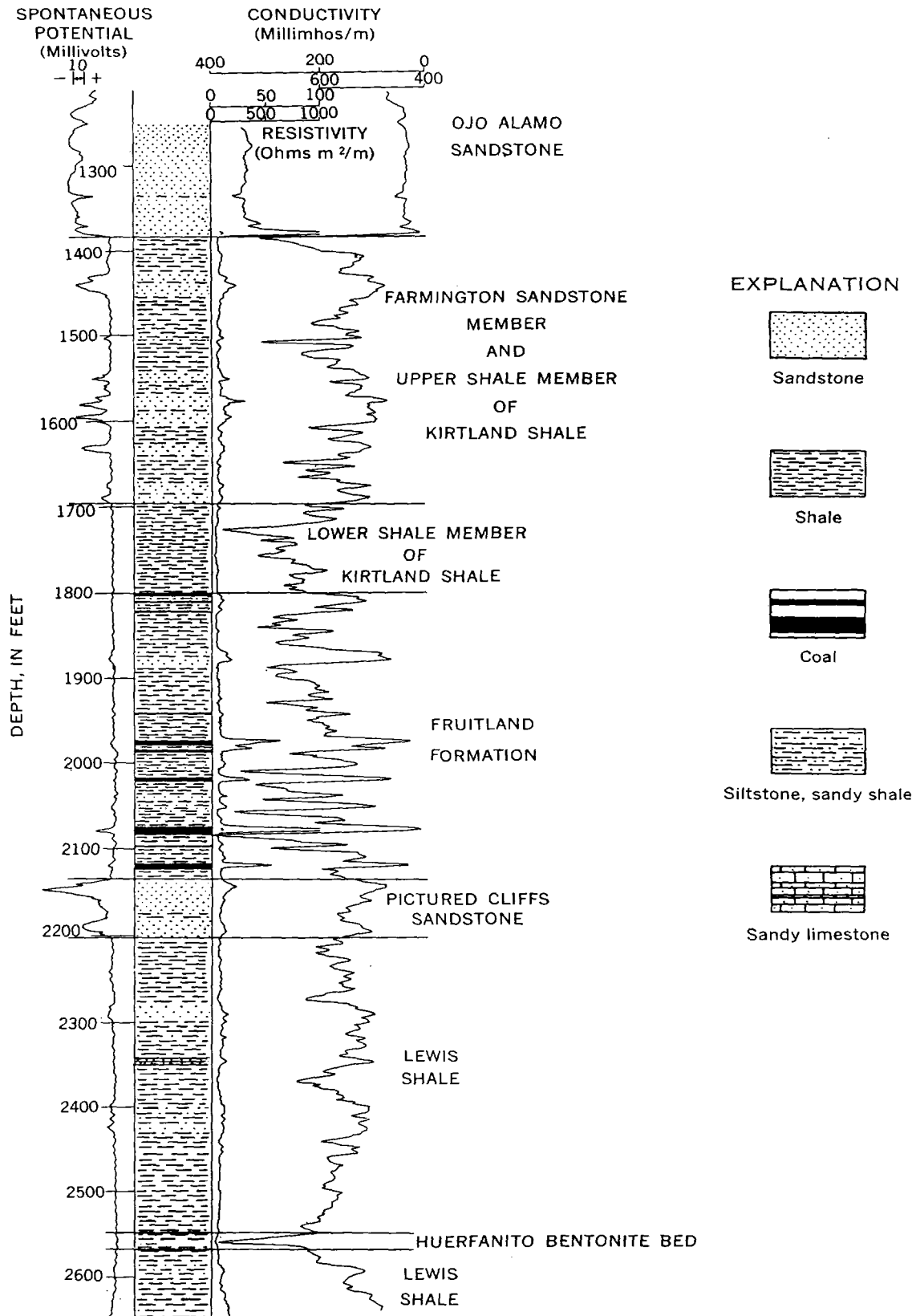


FIGURE 2.—Induction-electric log and lithologic column of the type well of the Huerfanito Bentonite Bed of the Lewis Shale showing the interval from below the Huerfanito through the lower part of the Ojo Alamo Sandstone. Lithologies are based on an interpretation of the three curves shown. The curves were traced from an induction-electric log of well 5 in cross section B-B' (pl. 2). The induction curve was deleted to avoid masking the resistivity curve.

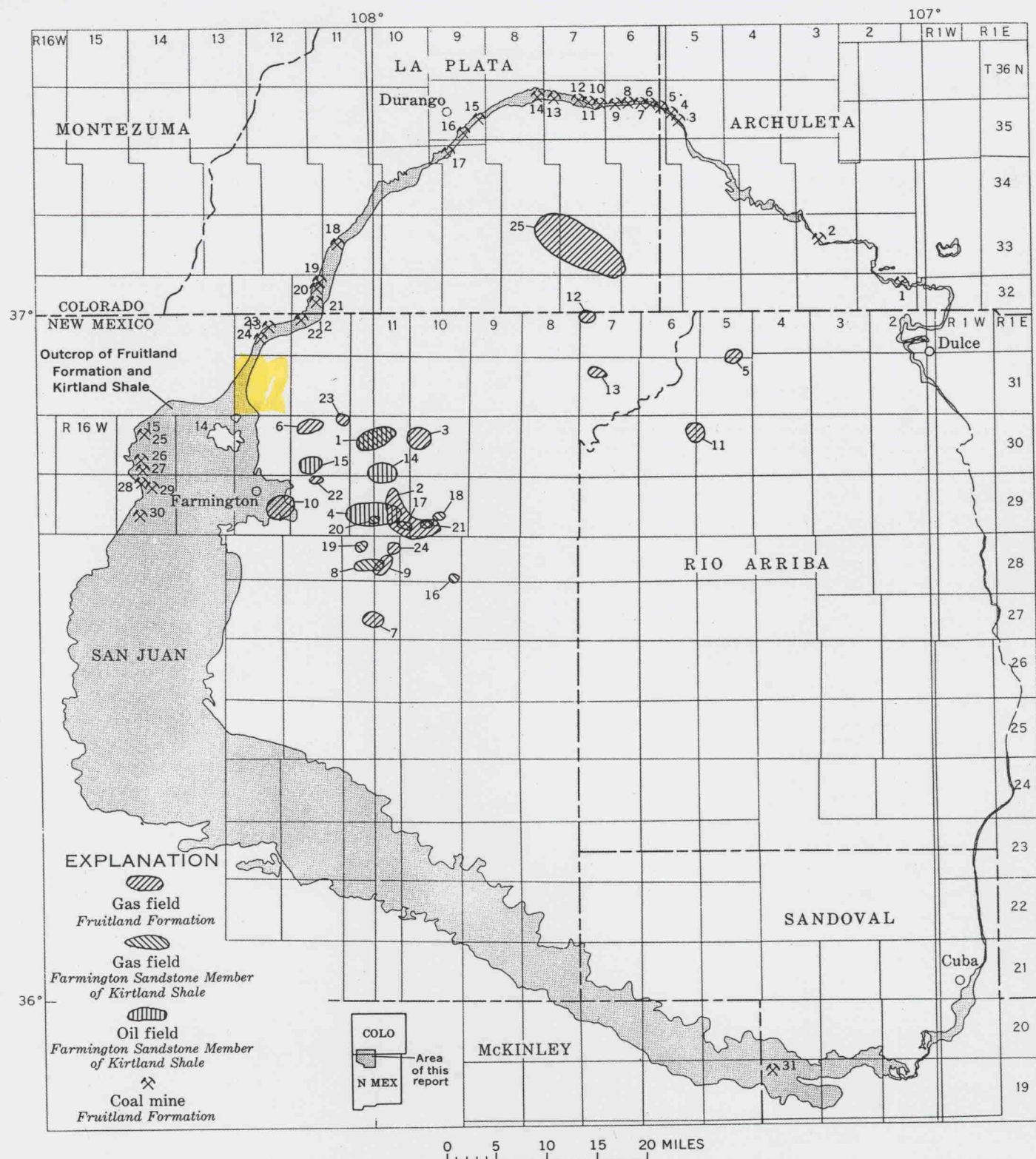


FIGURE 19.—Oil and gas fields and coal mines in the Fruitland Formation and the Farmington Sandstone Member of the Kirtland Shale. The numbered oil and gas fields are listed in table 2; the coal mines are listed in table 8.