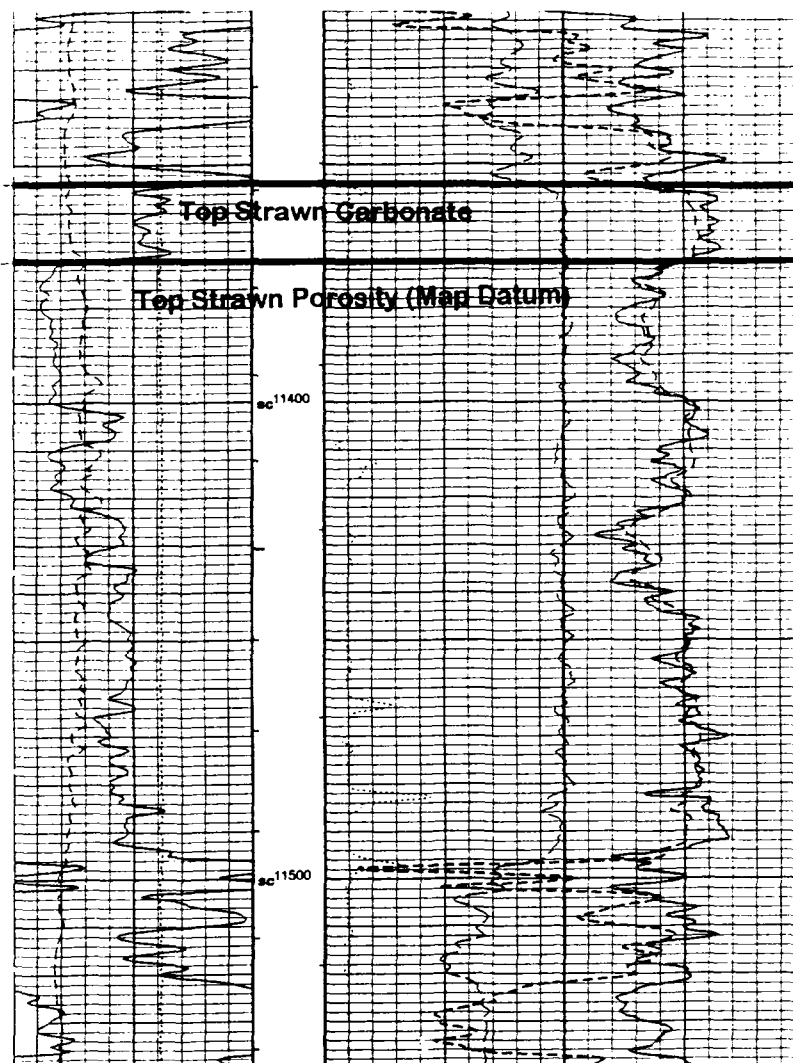


Big Dog Strawn South Type Log



Yates Petroleum Corporation
Shell Lusk "ANB" #2
1950' FNL & 350' FWL
Sec. 11-16S-35E

BEFORE THE OIL CONSERVATION DIVISION
Santa Fe, New Mexico
Case No. 12374 Exhibit No. 4
Submitted by:
Yates Petroleum Corporation
Hearing Date: May 4, 2000