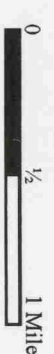
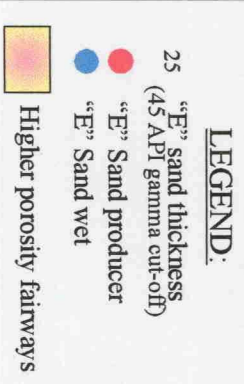
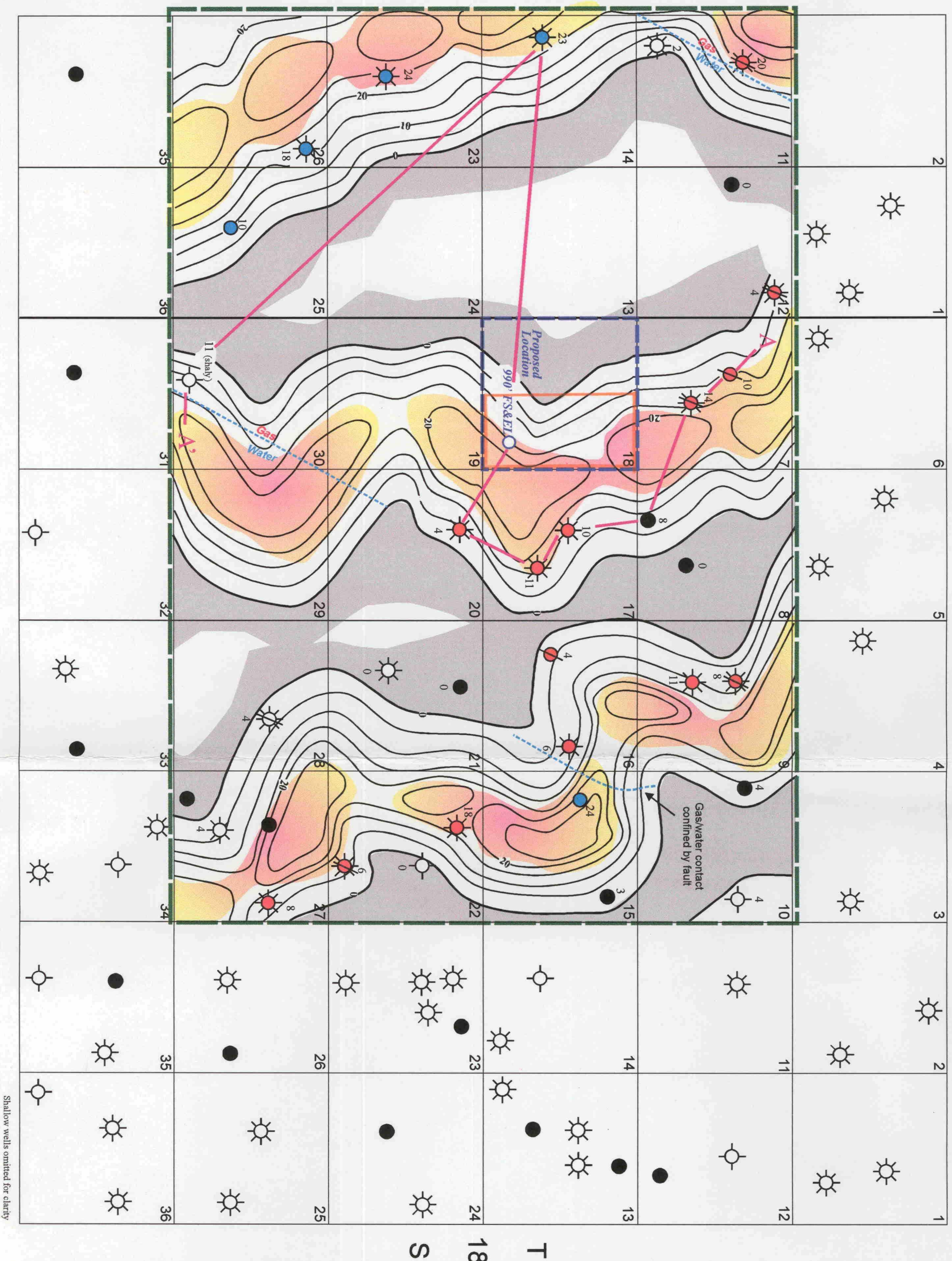


R - 27 - E

R - 28 - E



BEFORE THE OIL CONSERVATION DIVISION  
Santa Fe, New Mexico  
Case No. 12446 Exhibit No. 8  
Submitted by: Fuel Products, Inc.  
Hearing Date: July 12, 2000

V-F Petroleum, Inc., Operator  
Midland, Texas  
ILLINOIS CAMP PROSPECT  
Eddy County, New Mexico  
Isopach, middle Morrow "E" sand  
C. I. = 5 Feet  
Geology: GMK Drawn by: LJM July 13, 2000