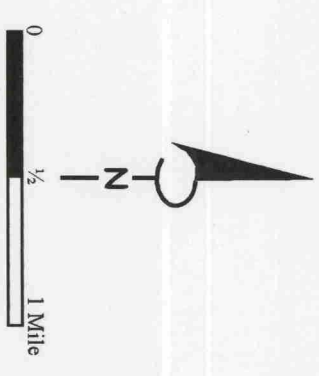
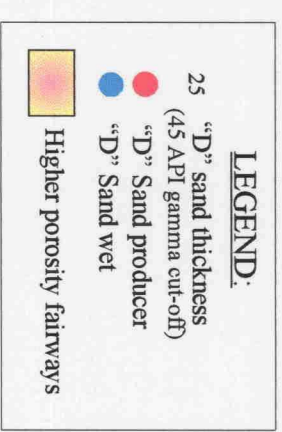
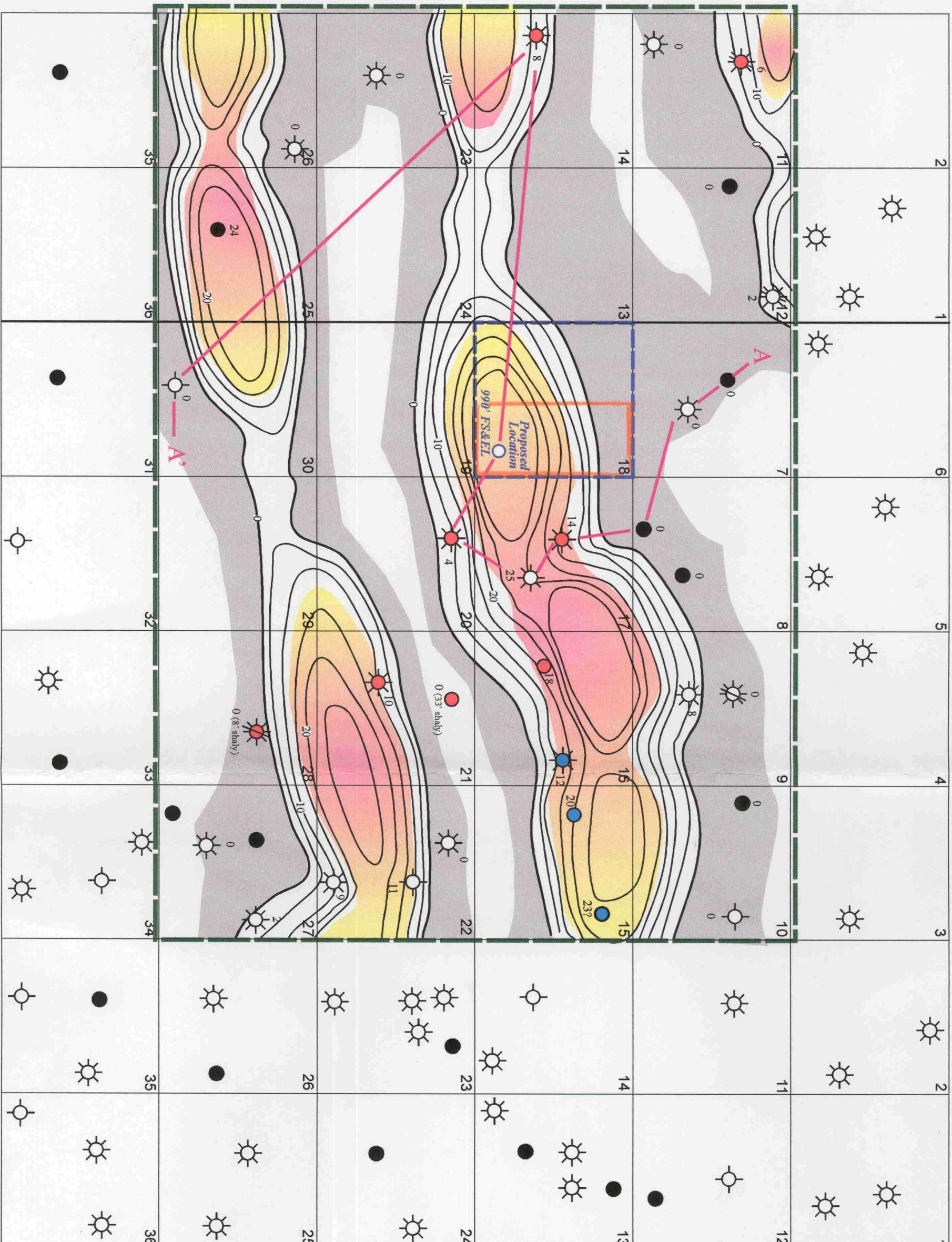


R - 27 - E

R - 28 - E



BEFORE THE OIL CONSERVATION DIVISION
Santa Fe, New Mexico
Case No. 12446 Exhibit No. 2
Submitted by: Fuel Products, Inc.
Hearing Date: July 12, 2000

V-F Petroleum Inc., Operator
Midland, Texas
ILLINOIS CAMP PROSPECT
Eddy County, New Mexico
Isopach, middle Morrow "D" Sand
C. I. = 5 Feet
Geology: GMK Drawn by: LHM July 13, 2000

Shallow wells omitted for clarity