

OIL CONSERVATION DIVISION

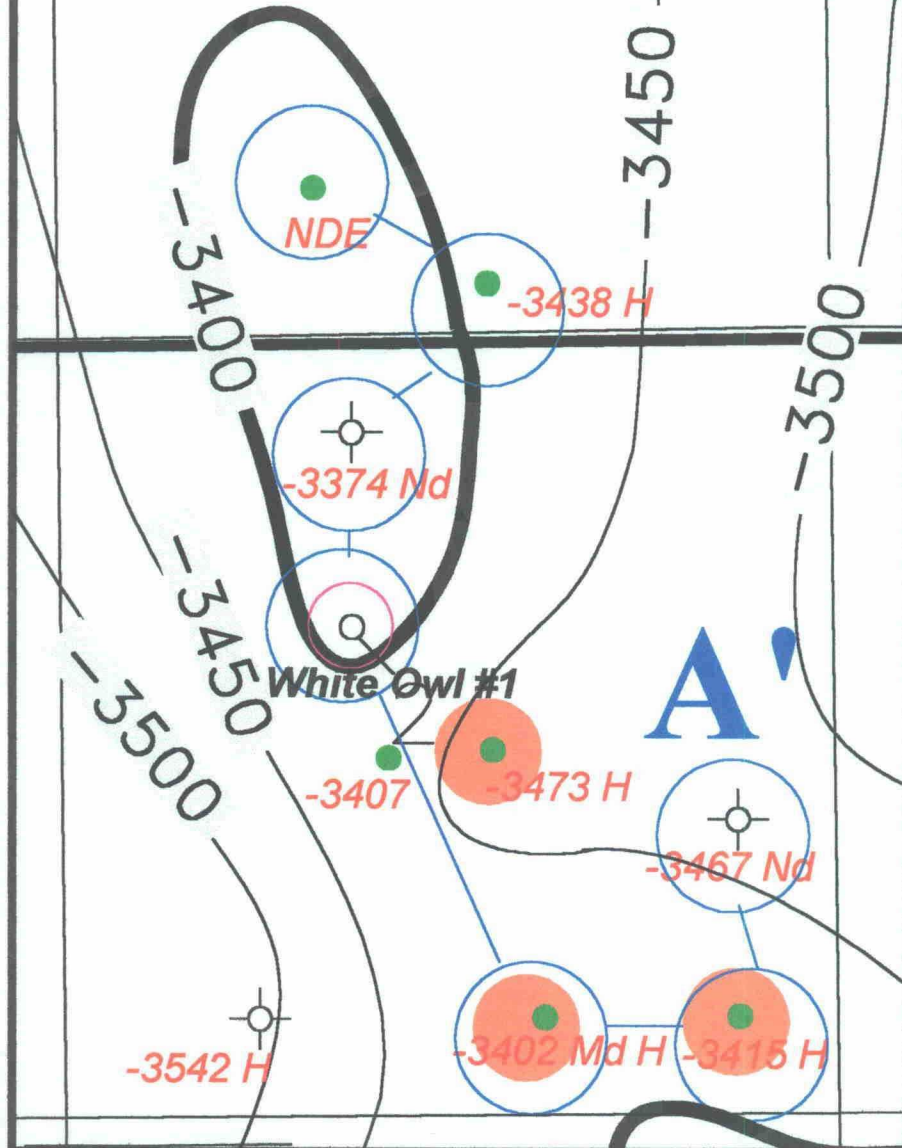
CASE NUMBER

EXHIBIT

10

A

35



- LRIC / Capataz Location
- △ Tested Non Commercial this Zone
- N Not Deep Enough
- NA Not Available
- NLTI No Log this Interval
- NGL No Porosity Log
- 3500 Nd Top of Porosity is Nadine Zone
- 3500 H Top of Porosity is House Zone

LRIC / CAPATAZ OPERATING

WHITE OWL #1

Lea County, New Mexico

STRUCTURE MAP
TOP OF DRINKARD POROSITY

Contour Interval = 50'

Date: May, 2001

Geology by: John Worrall