

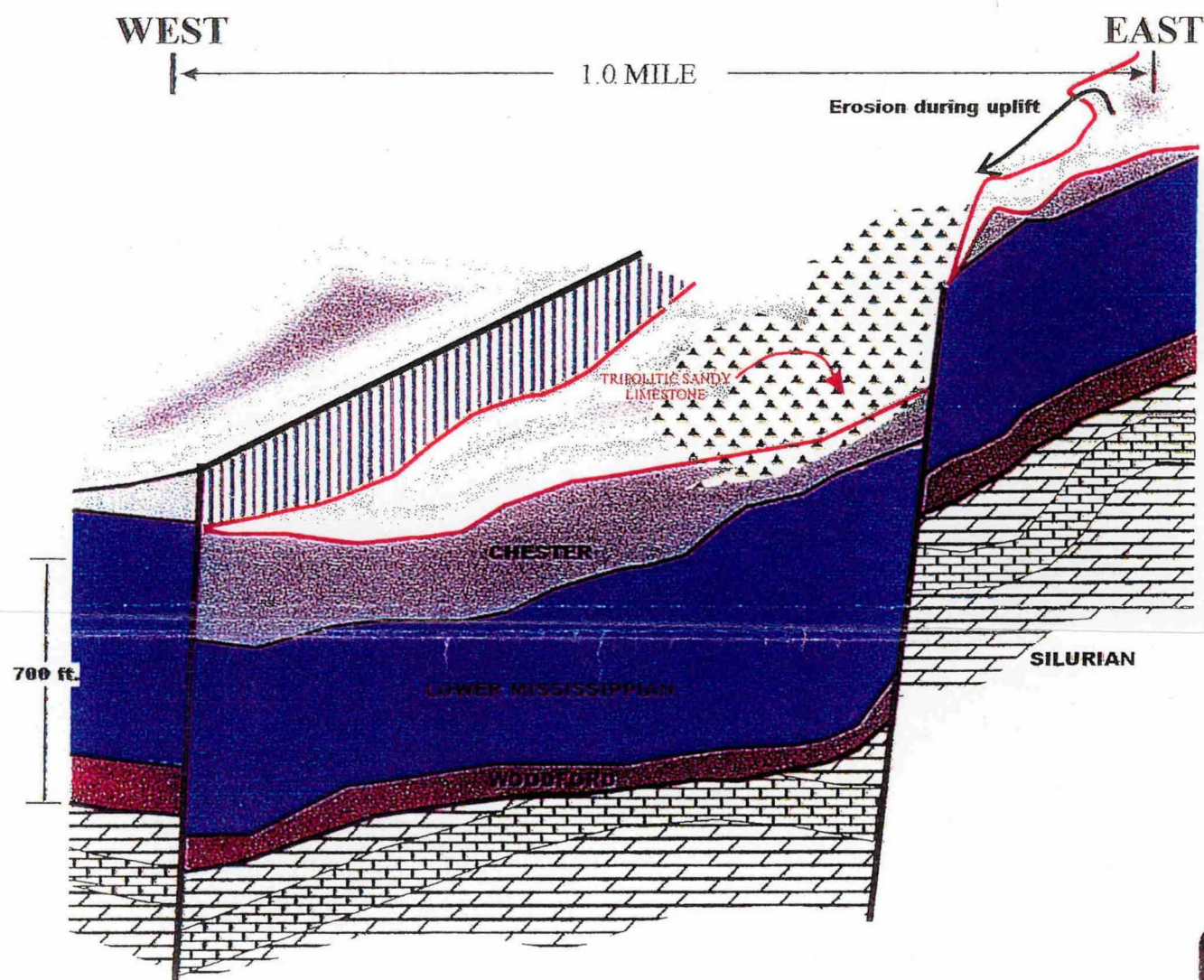
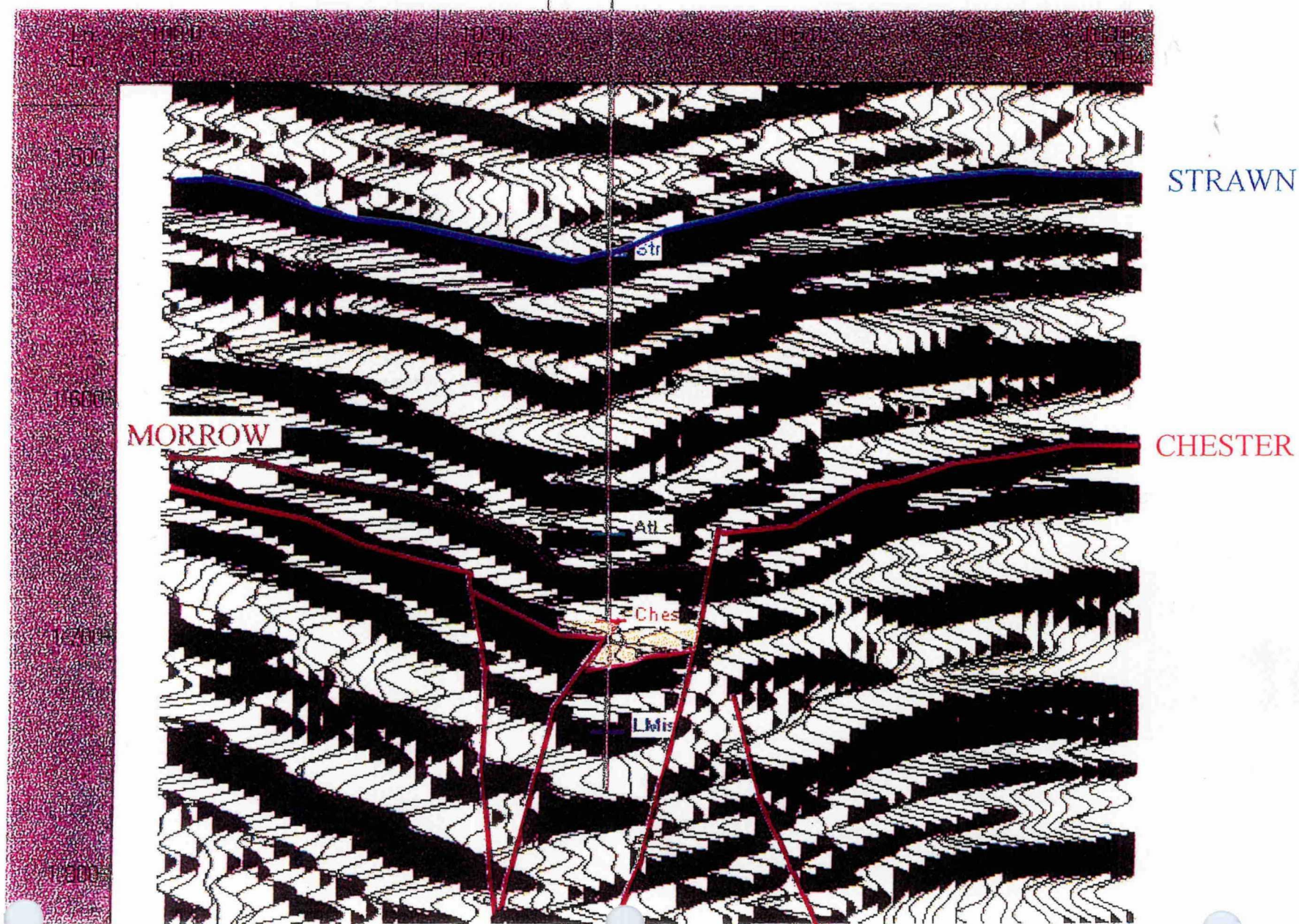
West

Section 23

TMBR/SHARP  
BLUE FIN 24 #1

Section 24

East



MODEL FOR FORMATION OF UPPER CHESTER CHERTY SANDS

DEPOSITION  
EXHIBIT  
47

Louis J. Mazzullo  
Certified Petroleum Geologist  
Albuquerque, New Mexico

5/14/2002

BEFORE THE  
OIL CONSERVATION COMMISSION  
Case No. 12816 Exhibit No. 18 E  
Submitted By:  
TMBR/Sharp Drilling  
Hearing Date: May 16, 2002

BIG TUNA PROSPECT  
Twp. 16S, Rge. 35E  
Lea County, New Mexico