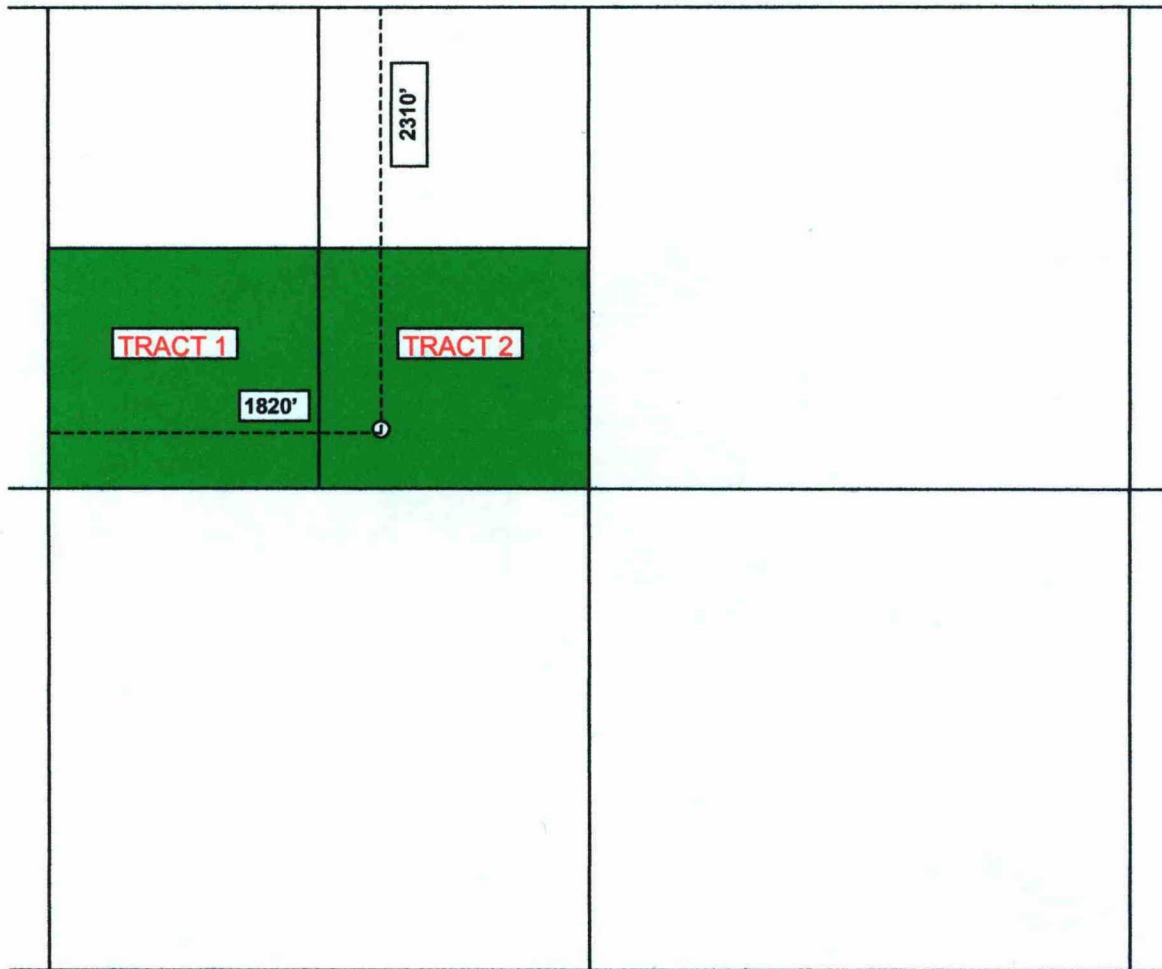


# LAUGHLIN NO. 6 WELL

## Lease Map

Plat of Compulsory Pooling Area covering the South Half of the Northwest Quarter of Section 4, Township 20 South, Range 37 East, Lea County, New Mexico



### 80-ACRE UNIT OUTLINE = S/2 NW/4

**TRACT 1:** SW/4 NW/4, being 40 acres, covered by Oil and Gas Lease dated July 3, 1928, recorded in Book 15, Page 264, by and between James W. Cooper and wife, Ola Cooper, as Lessors, and Roxana Petroleum Corporation, as Lessee

**TRACT 2:** SE/4 NW/4, being 40 acres, covered by Oil and Gas Lease dated July 12, 1928, recorded in Book 15, Page 505, by and between Martha E. Laughlin, a widow, et al, as Lessors, and M. W. Coll, as Lessee

BEFORE THE  
OIL CONSERVATION DIVISION  
Case No. 12852 Exhibit No. 1  
Submitted By:  
Matador Petroleum Corp.  
Hearing Date: May 30, 2002