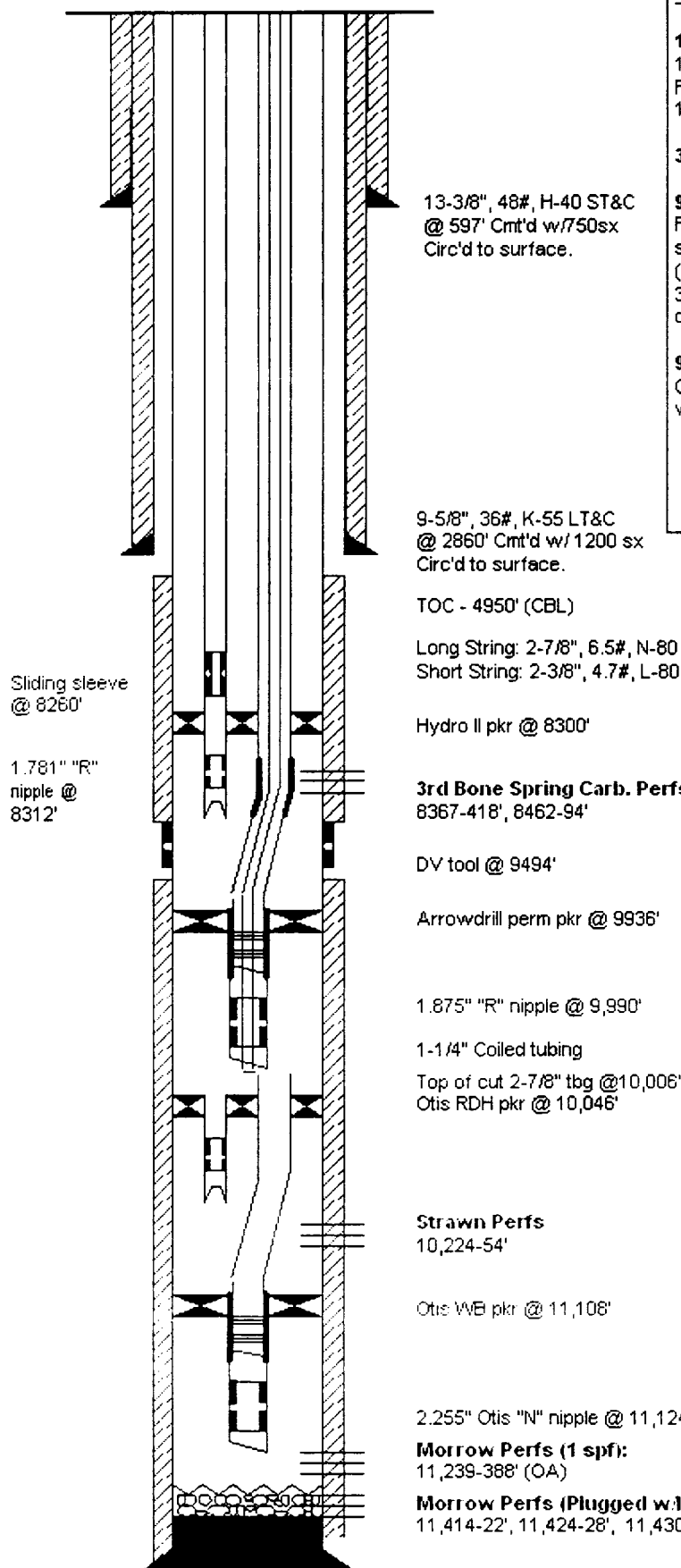


Cerf Federal Com. #2
1980' FNL & 1980' FWL
Sec. 10, T-21-S, R-27-E
Eddy Co., NM
Elevation: 3226' GL, 3241' KB

Spurite: 8/10/76
Completion Date: 10/19/76



Completion:

10:76: Dual completion in the Morrow and Strawn. Perf'd Strawn 10,224-54'. Acidized Strawn w/3000 gals DS-30 acid. IP: 2.0 MMcf/d FTP - 2000 psi on a 19/64\" ck. Perf'd Morrow 11,414-22', 11,424-28', 11,430-42' and 11,454-60'. IP 1.4 MMcf/d, FTP - 1200 psi on 24/64\" ck.

3:77: Acidized Morrow w/5000 gals 7.5% MSA.

9:82: Plugged Morrow perfs (11,414-60' OA) w/sand and hydromite cmt. Found communication between Strawn and Morrow. Pulled tubing strings and repaired leak. Perf'd Morrow thru tbg at the following depths (1 spf): 11,239', 240', 244', 284', 287', 288', 301', 302', 303', 305', 350', 355', 359', 368', 369', 378', 379', 380', 383', 386', 11,388'. Acidized w/7500 gals of MS acid. IP 1.1 MMcf/d, FTP - 2000 psi.

9:94: Failed pkr test. Pulled short string. Could not release dual pkr. Cut long string at 10,006'. Attempted to jar Otis RDH pkr out of the hole w/no success. Downhole commingled Strawn and Morrow.

9-5/8\", 36#, K-55 LT&C
@ 2860' Cmt'd w/1200 sx
Circ'd to surface.

TOC - 4950' (CBL)

Long String: 2-7/8\", 6.5#, N-80 NuLoc
Short String: 2-3/8\", 4.7#, L-80 EUE 8rd

Hydro II pkr @ 8300'

3rd Bone Spring Carb. Perfs (2 spf)
8367-418', 8462-94'

DV tool @ 9494'

Arrowdrill perm pkr @ 9936'

1.875\" R\" nipple @ 9,990'

1-1/4\" Coiled tubing

Top of cut 2-7/8\" tbg @ 10,006'
Otis RDH pkr @ 10,046'

Strawn Perfs
10,224-54'

Otis WB pkr @ 11,108'

2.255\" Otis \"N\" nipple @ 11,124'

Morrow Perfs (1 spf):
11,239-388' (OA)

Morrow Perfs (Plugged w/hydromite)
11,414-22', 11,424-28', 11,430-42', 11,454-60'

7\", 26# N-80 & S-95 @
11,572' Cmt'd w/800sx 1st
stage & 850 sx 2nd stage

Tubing Detail:

Short String Below RDH pkr:

8' X 1-1/2\" sub
1-1/2\" \"N\" nipple
WL entry guide

Long String below RDH pkr:

5 jts 2-7/8\", 6.5# N-80 NuLoc tbg
3 blast jts
27 jts 2-7/8\", 6.5# NuLoc tbg
Sliding Sleeve
10' 2-7/8\" sub
Set down locator
Seal assy (8')
Otis WB packer w/8\" seal bore extension
8' - 2-7/8\", 6.5# N-80 sub
Otis 2.255\" \"N\" nipple
Mule shoe

Production String

2-7/8\" X 4' tbg sub and tbg hanger (top of hanger CS hydril)
324 jts 2-7/8\" N-80 NuLoc tbg
XO
2 jts 2-7/8\" tbg
Baker Model \"R\" pkr (left-hand set) @ 9936'
2jts 2-7/8\" tbg
2-7/8\" SN @ 10,003'
2-7/8\" X 2-3/8\" XO
1 jt 2-3/8\" J-55 tbg

OIL CONSERVATION DIVISION

CASE NUMBER

EXHIBIT

9

TD: 11,572'
PBTC: 11,524'