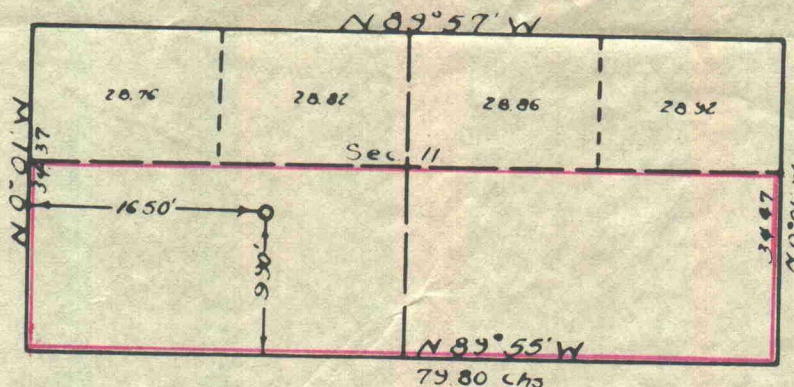


Company E. P. Cosinger  
Lease Phillips (SF 078072) Well No. \_\_\_\_\_  
Sec. 11, T. 28 N, R. 13 W, NMPM  
Location 990' from the South Line and 1650' from  
the West Line.  
Elevation 5964 Ungraded ground

San Juan County

New Mexico



Note: Stanolind Oil & Gas and Benson-Montin,  
Gallegos Canyon Unit, have the North,  
East and South offsets to this Section.

Scale—4 inches equal 1 mile.

This is to certify that the above plat was prepared from field notes  
of actual surveys made by me or under my supervision and that the  
same are true and correct to the best of my knowledge and belief.

*Charles J. Finklea*

Seal:

Registered Professional Charles J. Finklea  
Engineer and Land Surveyor. N. Mex. Reg. No. 1302

Surveyed January 19, 1953



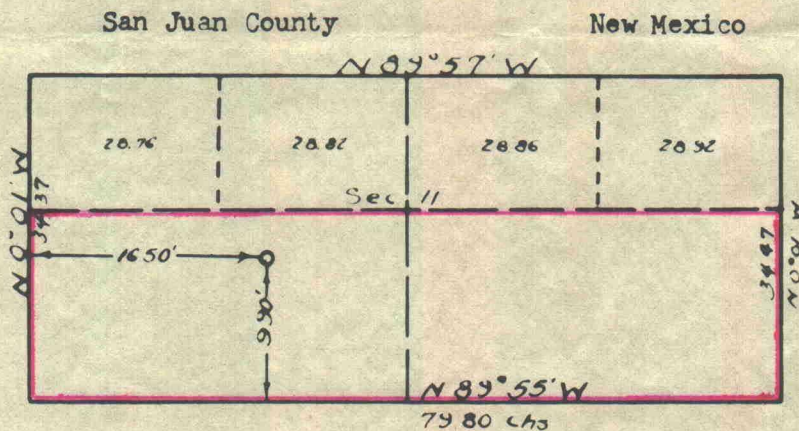
Company E. P. Cesinger

Lease Phillips (SF 078072) Well No. 1

Sec. 11, T. 28 N, R. 13 W, NMPM

Location 990' from the South Line and 1650' from the West Line.

Elevation 5964 Ungraded ground



Note: Stanolind Oil and Gas Co and Benson-Montin, Gallegos Canyon Unit, have the North, East, and South Offsets to this Section.

Scale—4 inches equal 1 mile.

This is to certify that the above plat was prepared from field notes of actual surveys made by me or under my supervision and that the same are true and correct to the best of my knowledge and belief.

*Charles J. Finklea*

Seal:

Registered Professional  
Engineer and Land Surveyor. N. Mex. Reg. No. 1302

Charles J. Finklea

Surveyed January 19, 1953

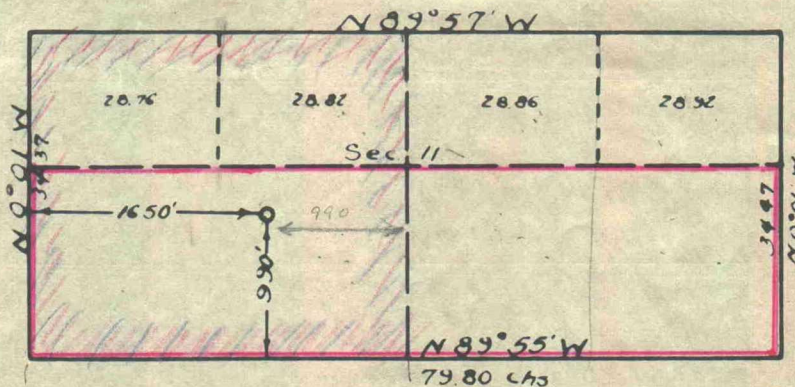


29  
3  
87  
120  
206.60

Company E. P. Cesinger  
 Lease Phillips (SF 078072) Well No. 1  
 Sec. 11, T. 28 N, R. 13 W, NMPL  
 Location 990' from the South Line and 1650' from the West Line.  
 Elevation 5964 Ungraded ground

San Juan County

New Mexico



Note: Stanolind Oil & Gas and Benson-Montin, Gallegos Canyon Unit, have the North, East and South offsets to this Section.

N

Scale—4 inches equal 1 mile.

This is to certify that the above plat was prepared from field notes of actual surveys made by me or under my supervision and that the same are true and correct to the best of my knowledge and belief.

*Charles J. Finklea*

Seal:

Charles J. Finklea  
 Registered Professional  
 Engineer and Land Surveyor. N. Mex. Reg. No. 1302

Surveyed

January 19,

1953