

R-33-E

26

BEFORE EXAMINER NUTTER  
OIL CONSERVATION COMMISSION  
APPL EXHIBIT NO. 1  
C/1 1824

Oil CO.

Fed.

CONT.

BROWN

26

CONT.

CONT.

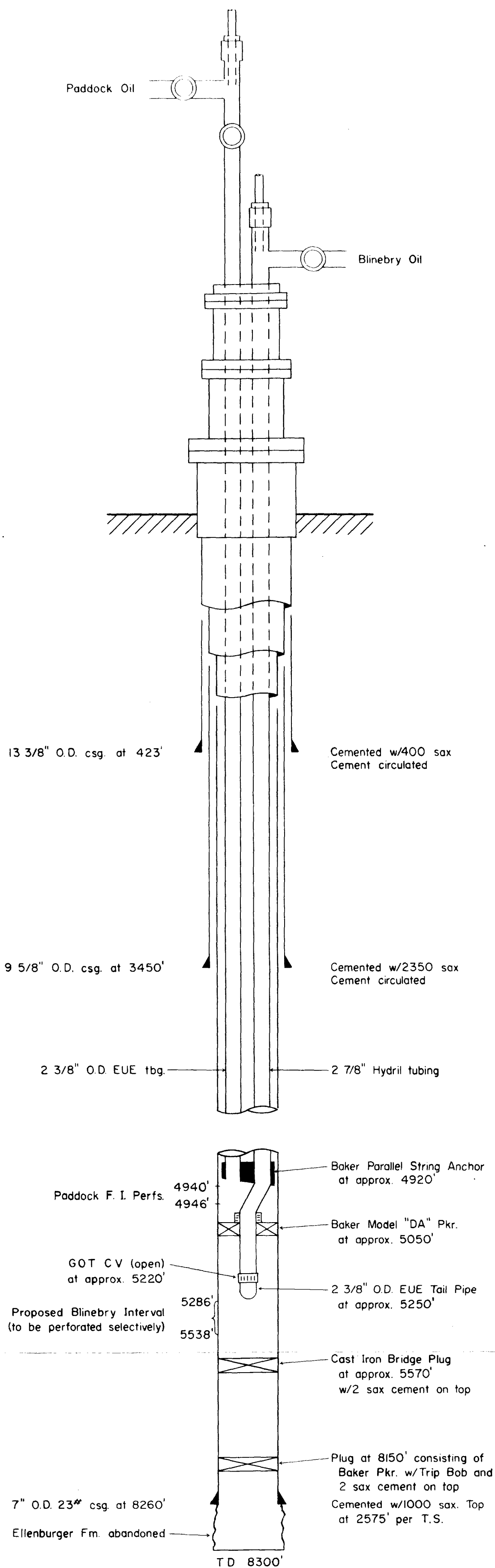
PAYNE

6

STATE

EL MAR POOL LEA COUNTY, N.M.

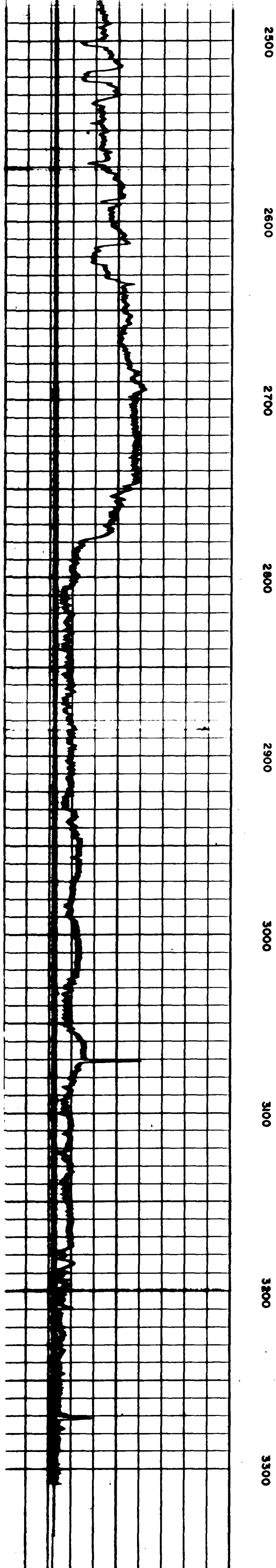
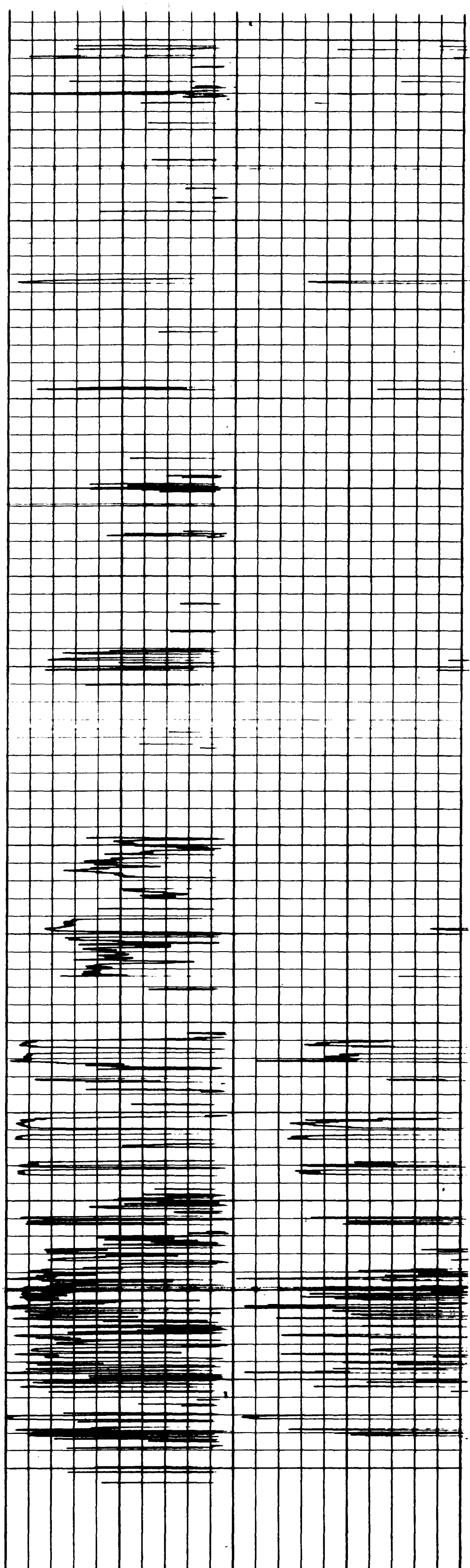
SCALE 1" = 1000'



Note!  
Drawing not to scale

**PROPOSED MECHANICAL INSTALLATION**  
**OIL-OIL DUAL COMPLETION**  
**LEARCY McBUFFINGTON NO. 5**  
**JUSTIS-BLINEBRY & PADDOCK (UNDESIGNATED)**  
**POOLS**  
**LEA COUNTY, NEW MEXICO**  
 Gulf Oil Corporation      Fort Worth Prod. Div.  
 Petroleum Engineering

LARGE FORMAT  
EXHIBIT HAS  
BEEN REMOVED  
AND IS LOCATED  
IN THE NEXT FILE



Case No.

1828

Large Exhibits

LARGE FORMAT  
EXHIBIT HAS  
BEEN REMOVED  
AND IS LOCATED  
IN THE NEXT FILE

LARGE FORMAT  
EXHIBIT HAS  
BEEN REMOVED  
AND IS LOCATED  
IN THE NEXT FILE