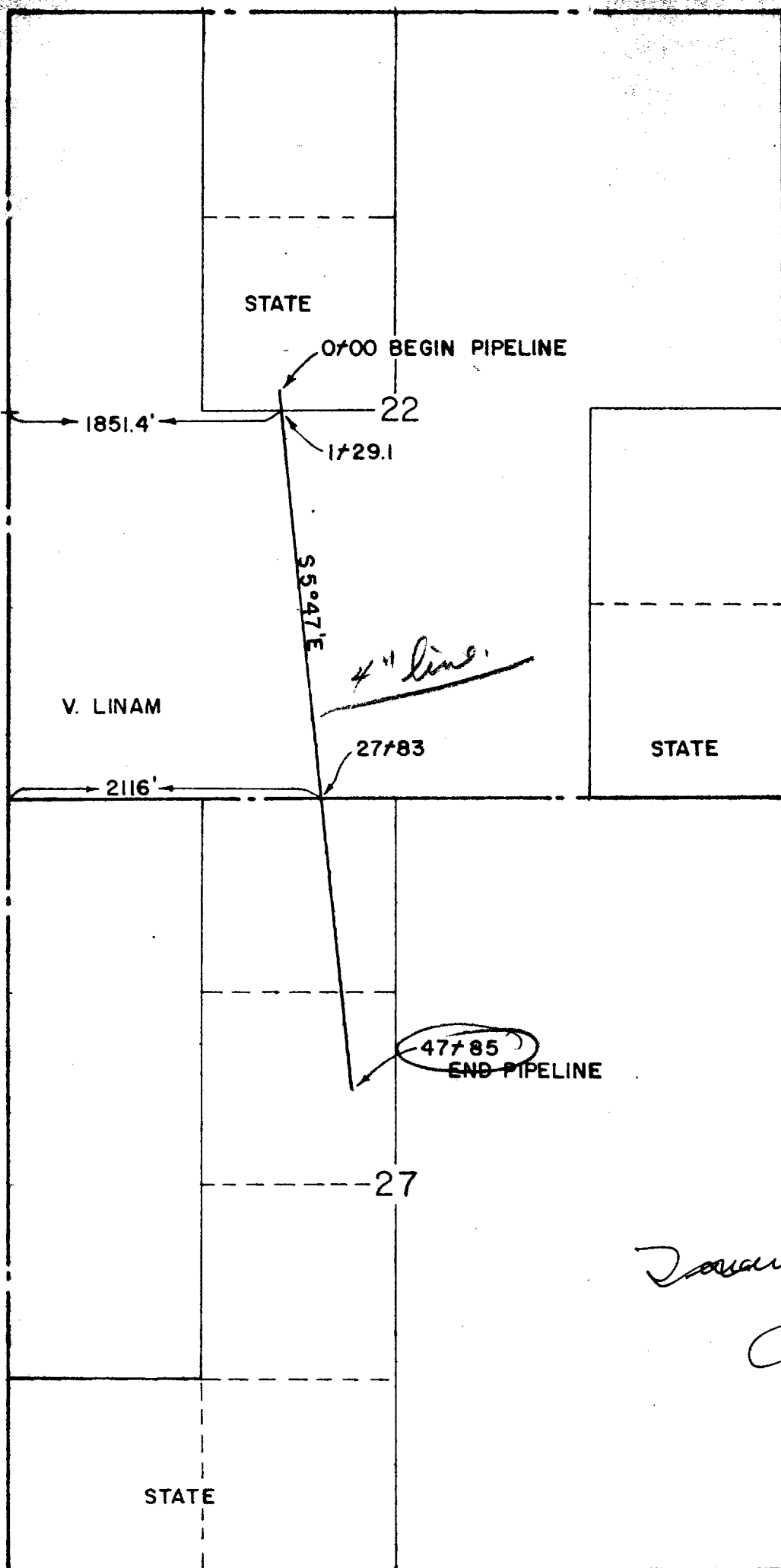


LARGE FORMAT
EXHIBIT HAS
BEEN REMOVED
AND IS LOCATED
IN THE NEXT FILE



Trainer Ex #2
Case 158

I HEREBY CERTIFY THAT THIS PLAT WAS
MADE FROM NOTES TAKEN IN THE FIELD IN
A BONA FIDE SURVEY MADE UNDER MY SUPER-
VISION, AND THAT THE SAME IS TRUE AND
CORRECT TO THE BEST OF MY KNOWLEDGE
AND BELIEF.

John W. West
JOHN W. WEST, N.M. P.E. & L.S. NO. 676
TEXAS R.P.S. NO. 1138

C. W. TRAINER
Hobbs, New Mexico

Pipeline Crossing State of New
Mexico land in Section 22 and 27,
Township 19 South, Range 35 East,
N.M.P.M., Lea Co., N. M.

JOHN W. WEST ENGINEERING COMPANY
CONSULTING ENGINEERS HOBBS, NEW MEXICO

Scale 1" = 1000'
Date 2-9-60
Drawn by H. J. L.
Sheet 1 of 2 Sheets