

**PLAT OF Resler-Yates-State LOCATIONS**

in  
**EDDY COUNTY, NEW MEXICO**

SCALE 1"=600'

○ PROPOSED INJECTION

● INJECTION WELL

● OIL WELL

▲ Wells Completed in Pays

Other Than 1st GRAYBURG

GRARIDGE CORP.

280  
330

Case 1973

*duped, 1st time*

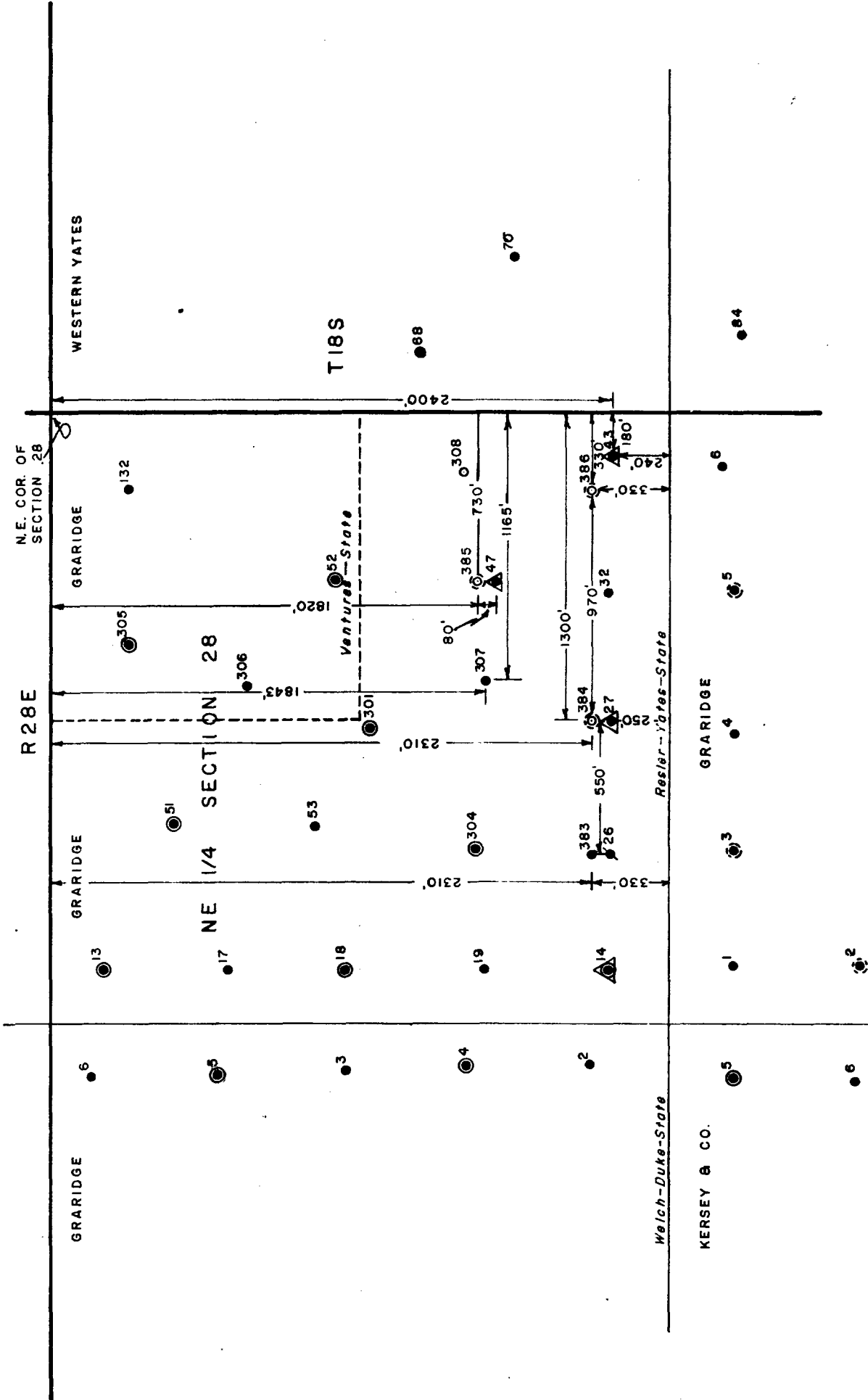
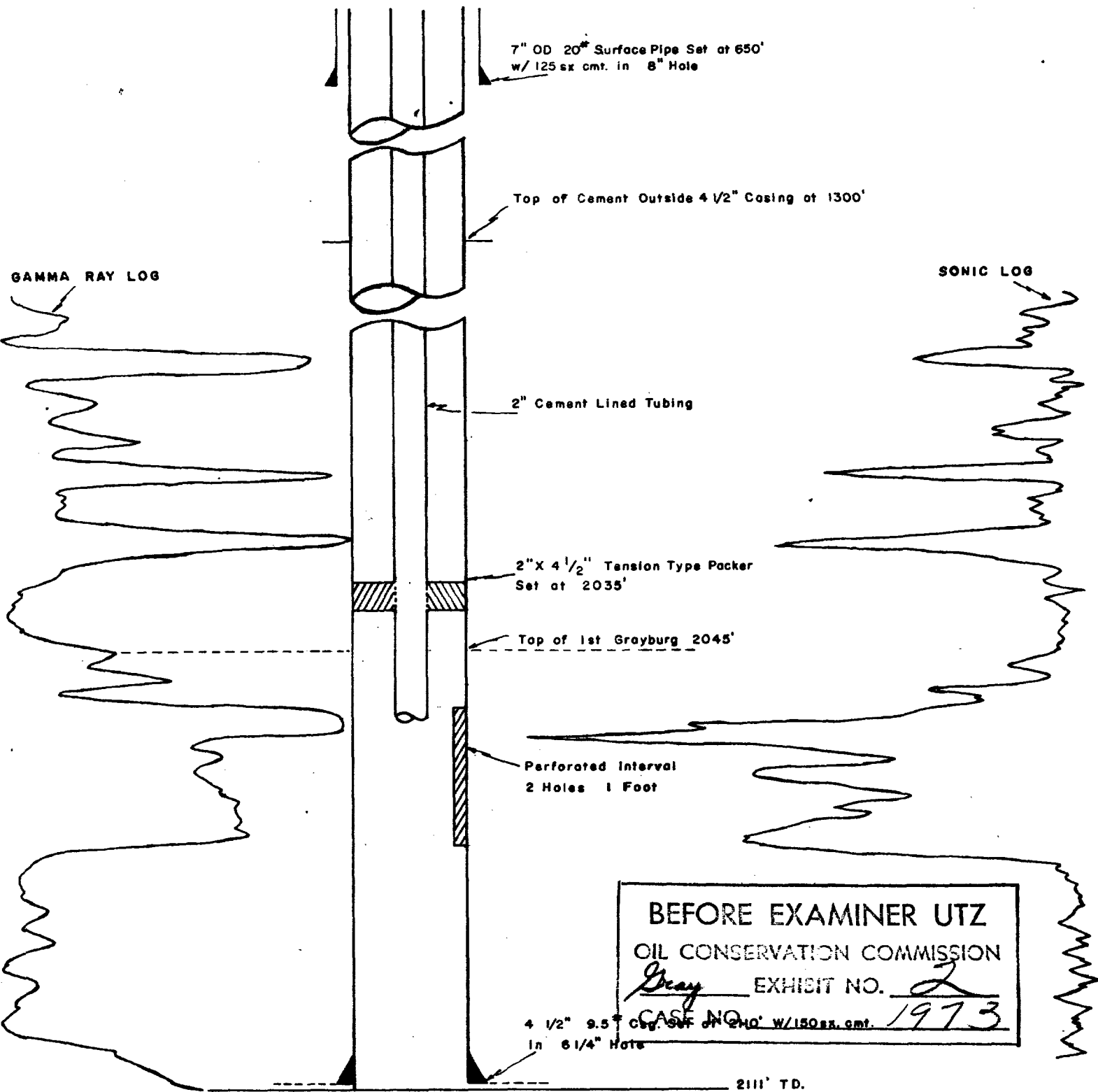


EXHIBIT NO. 1973  
 CASE NO. 1973  
 EXHIBIT NO. 1973  
 CASE NO. 1973

Toomy - Allen-State  
 SAKIN EST.  
 Allen-State

PLAT OF Resler-Yates-State LOCATIONS  
 in  
 EDDY COUNTY, NEW MEXICO  
 SCALE 1"=600'  
 PROPOSED INJECTION Wells Completed In Pays  
 INJECTION WELL Other Than 1st GRAYBURG  
 OIL WELL GRARIDGE CORP.

**TYPICAL INJECTION WELL COMPLETION**  
**GRARIDGE CORP.**  
**ARTESIA FLOOD NO. 2**



Note: All Depths On This Sketch Are Approximate

AVAILABLE WELL DATA  
Furnished by Western Development Co.

RESLER YATES STATE No. 27

G-28-18-28

10" casing set at 282'; 8 $\frac{1}{4}$ " casing set at 942'; 7" 20#, J-55 casing set at 2618' and cemented with 100 sacks in 1948. Hole re-completed in 1956 shows perforations at 2192' to 2208', 2306' to 2340', 2532' to 2544' and open hole 2618-2791'. A bridge plug was set at 2550' and one at 2200'. Well was fractured and bridge plugs drilled out, well made 100 BOPD, no water. Approximate top of 1st Graburg is 2078'. 80 quarts of nitro was used at 2088-2101'. The 1st Grayburg was not perforated.

RESLER YATES STATE No. 43

H-28-18-28

10" casing set at 296'; 8 $\frac{1}{4}$ " casing set at 969'; 6-7/8", probably 17# & 20# lapweld, casing set at 2187'. Squeezed with 25-30 sacks cement at shoe. TD of 2821' with oil shows at 2780-2821', 2744-49', 2661-63', 2417-21', 2127-33', and 2109-33', and hole fillup 700' with fluid. 375' oil in hole at 2494'. Couldn't bail hole down at 2735-40'. Approximate top of 1st Grayburg 2109'. 120 quarts of nitro was used at 2108-36'.

RESLER YATES STATE No. 47

H-28-18-28

10" casing set at 295'; 8" casing set at 945'; 6-5/8" lapweld set at 2157' or 2300'. TD of 2827' with shows at 2783-2803'; 2397' (5') Premier. Acidized 2783'-2803' with 1500 gallons acid in 6 $\frac{1}{4}$ " hole. Hole was shot with 180 quarts of nitro from 2096-2119'. Approximate top of 1st Grayburg is 2107'. Made water in some zone above 2157'.

BEFORE EXAMINER UTZ	
OIL CONSERVATION COMMISSION	
<i>James</i>	EXHIBIT NO. <u>3</u>
CASE NO.	<u>1973</u>