

WELL DATA

PROPOSED DUAL COMPLETION

Lease and Well Number: LaBow-Federal Well No. 6

Location of Well: Unit Letter I, Section 25, Township 19 South, Range 30 East, North Hackberry (Yates) Pool, Eddy County, New Mexico.

Interval Presently Producing: Yates Sand Perforations 1936 to 1952 feet.

Surface Casing Size and Depth: 8-5/8", 24.7# at 544 feet. Cemented with 350 sacks regular cement with 3% calcium chloride. Cement was circulated to the surface.

Production Casing Size and Depth: 5-1/2", 15.5#, J-55 set at 2172 feet KDB. Cemented with 250 sacks regular and 0.5% Halad #9 and 2% calcium chloride. Tailed in with 50 sacks latex cement.

Top of Cement Behind Production Casing: 520 feet KDB.

Proposed Dual Producing Intervals:

Lower Zone - Seven Rivers Perforations 2116 to 2126 feet.

Upper Zone - Yates Sand Perforations 1936 to 1952 feet.

Type of Dual Completion: Conventional

Type of Fluid to be Produced: Lower Zone - Oil
Upper Zone - Oil

Description of Mechanical Installation:

Packer - Baker Oil Tools Model N Permanent Type
Production Packer set between upper and lower zones at a depth of approximately 2090 feet.

Tubing - (Lower Zone) 2-1/16" OD, 1.751" ID, J-55
Integral Joint set in tension through Model N Packer.
(Upper Zone) 2-1/16" OD, 1.751" ID, J-55
Integral Joint suspended at approximately 1960 feet.

Lifting Equipment - Each zone will be produced with a 1-1/4" bore bottom hole insert pump.

BEFORE EXAMINER UTZ	
OIL COMMISSIONER OF NEW MEXICO	
Appr	EX. NO. 3
Case No.	2543

WELL DATA

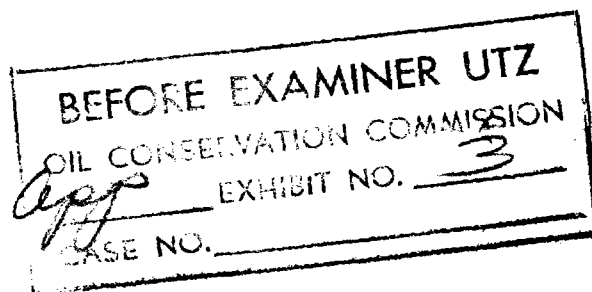
PROPOSED DUAL COMPLETION

(Page Two)

Production and Reservoir Data:

<u>Formation</u>	<u>Producing Method</u>	<u>24 Hour Oil Production, Bbls.</u>	<u>Gas-Oil Ratio Cu.Ft./Bbl.</u>	<u>Oil Gravity °API</u>	<u>Bottom Hole Pressure, Psig</u>
Yates Sand	Pumping	36.51	291	31.4	410
Seven Rivers	Pumping		0	18.1	576

(Note: Production and Reservoir Data shown for Seven Rivers was obtained from Well No. 4 and considered general for the reservoir. The gas oil ratio is indicated as zero because gas volume from the Seven Rivers formation is too small to measure.)



- CASE 2543: Application of G. W. Strake for a dual completion, Eddy County, New Mexico. Applicant, in the above-styled cause, seeks permission to complete its LeBow-Federal Well No. 6 located in Unit I of Section 25, Township 19 South, Range 30 East, Eddy County, New Mexico, as a dual completion (conventional) in the North Hackberry-Yates and Hackberry-Seven Rivers Pools with the production of oil from both formations to be through parallel strings of 2 1/16-inch tubing.
- CASE 2544: Application of Perry R. Bass for a unit agreement, Lea County, New Mexico. Applicant, in the above-styled cause, seeks approval of the Plains Unit Agreement embracing 7,198.01 acres, more or less, of federal lands in Township 19 South, Range 32 East, Lea County, New Mexico.
- CASE 2545: Application of The British American Oil Producing Company for a unit agreement, Lea County, New Mexico. Applicant, in the above-styled cause, seeks approval of the Jalmat Field-Yates Sand Unit Agreement embracing 2,760 acres, more or less, of State and fee lands in Township 22 South, Range 35 East, Lea County, New Mexico.
- CASE 2546: Application of The British American Oil Producing Company for a waterflood project, Lea County, New Mexico. Applicant, in the above-styled cause, seeks permission to institute a waterflood project in the Yates formation in the Jalmat Pool in an area underlying its proposed Jalmat Field-Yates Sand Unit Area, comprising 2,760 acres, more or less, in Township 22 South, Range 35 East, Lea County, New Mexico, with injection of water initially to be through 16 wells located within said unit area, the project to be governed by the provisions of Rule 701.

- CASE 2539: Application of Pan American Petroleum Corporation for an exception to Order No. R-333-E, San Juan County, New Mexico. Applicant, in the above-styled cause, seeks an exception to Order No. R-333-E to permit the extension of the terminal date for the 1961 deliverability test period from December 15, 1961, to March 1, 1962, for ten wells located in Townships 27 and 28 North, Ranges 10 and 11 West, San Juan County, New Mexico.
- CASE 2540: Application of Pan American Petroleum Corporation for a triple completion, Lea County, New Mexico. Applicant, in the above-styled cause, seeks permission to complete its State "CK" Well No. 2, located in the NE/4 SW/4 of Section 19, Township 21 South, Range 37 East, Lea County, New Mexico, as a triple completion in the Drinkard, Blinebry and Paddock Oil Pools with the production of oil from the Blinebry and Drinkard formations and the production of undetermined hydrocarbons from the Paddock formation.
- CASE 2541: Application of J. Glenn Turner for a dual completion, San Juan County, New Mexico. Applicant, in the above-styled cause, seeks permission to complete its Ballard Well No. 11-15 located in Unit D of Section 15, Township 26 North, Range 9 West, San Juan County, New Mexico, as a dual completion (conventional) in the Basin-Dakota Gas Pool and an undesignated Gallup oil pool with the production of gas from the Dakota formation and the production of oil from the Gallup formation to be through parallel strings of 2 1/16-inch tubing.
- CASE 2542: Application of La Plata Gathering System, Inc. for a dual completion, a non-standard gas proration unit, and an unorthodox gas well location, Rio Arriba County, New Mexico. Applicant, in the above-styled cause, seeks permission to complete a gas well to be located at an unorthodox gas well location 1980 feet from the South line and 734 feet from the East and West lines of Section 19, Township 32 North, Range 5 West, Rio Arriba County, as a dual completion (conventional) in the Blanco-Mesaverde and Basin-Dakota Gas Pools with the production of gas from the Dakota formation to be through a string of 2 1/16-inch tubing and the production of gas from the Mesaverde formation to be through a parallel string of 1 1/2-inch tubing. Applicant further seeks the establishment of a 355.25-acre non-standard gas proration unit in the aforesaid pools comprising all of Sections 18 and 19, in said township to be dedicated to the above-described well.

2543
GEORGE W. STRAKE

3300 GULF BUILDING
OFFICE OCC HOUSTON, TEXAS

1962 MAR 10 AM 3:17

West Texas District Office

POST OFFICE BOX 837

WINTERS, TEXAS

March 28, 1962

New Mexico Oil Conservation Commission
P. O. Box 871
Santa Fe, New Mexico

Attention: Mr. R. S. Morris

Dear Sir:

It is respectfully requested that a hearing be set at the earliest possible time to consider G. W. Strake's application for permission to complete his LeBow-Federal Well No. 6 located in Unit I of Section 25, Township 19 South, Range 30 East, Eddy County, New Mexico, as a dual completion (conventional) in the North Hackberry Yates and Hackberry Seven Rivers Pools. The production of oil from the Seven Rivers will be through a string of 2-1/16 inch tubing and the production of oil from the Yates zone will be through a parallel string of 2-1/16 inch tubing.

We enclose for your consideration a plat of the area illustrating all producing wells offsetting the LeBow-Federal Lease as well as a diagram of the anticipated mechanical dual installation for Well No. 6.

Yours very truly,

G. W. STRAKE

By



C. R. Mote

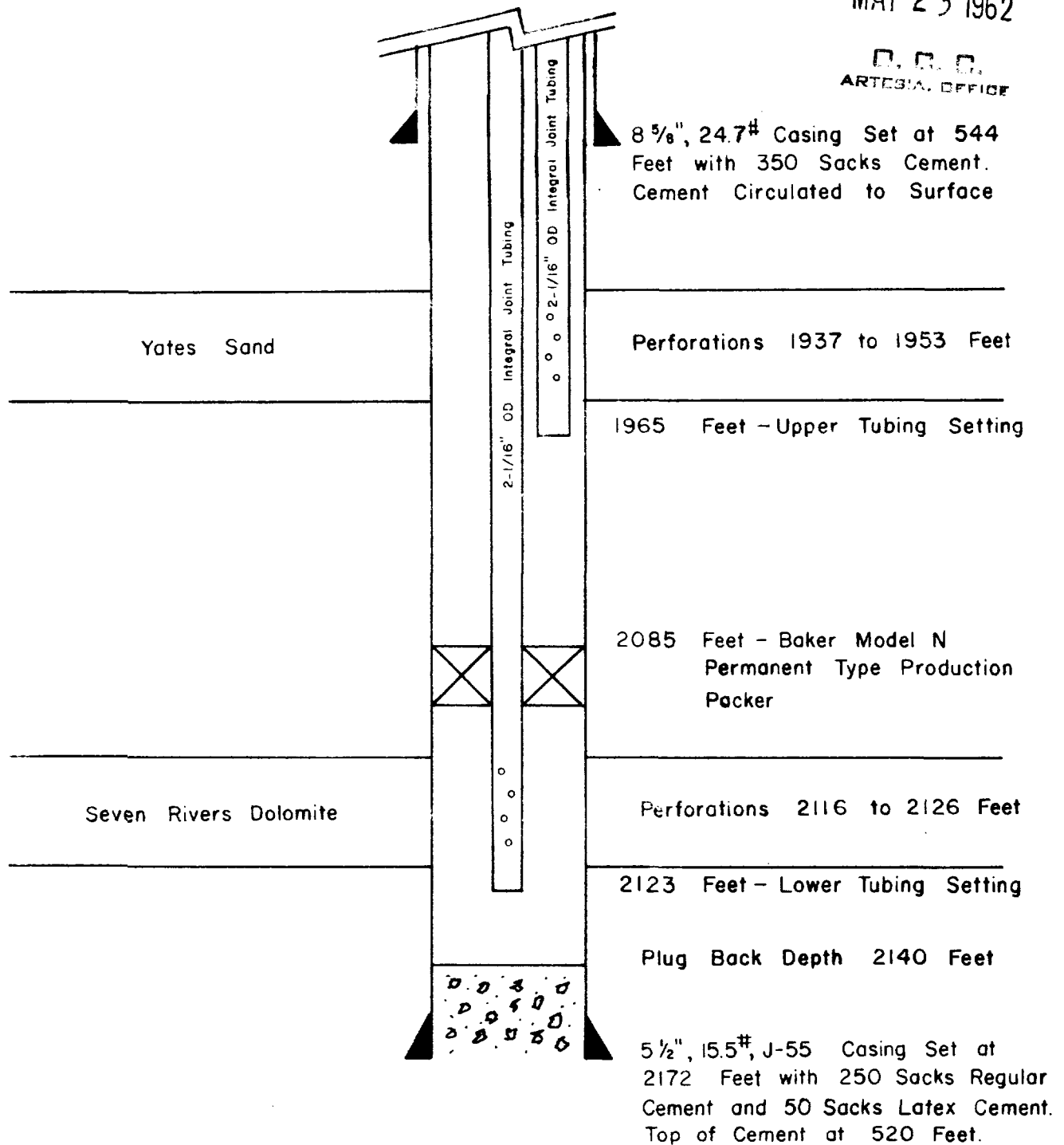
JWW:sm
Enclosures

Handwritten notes:
2/28/62
11/19/62
2

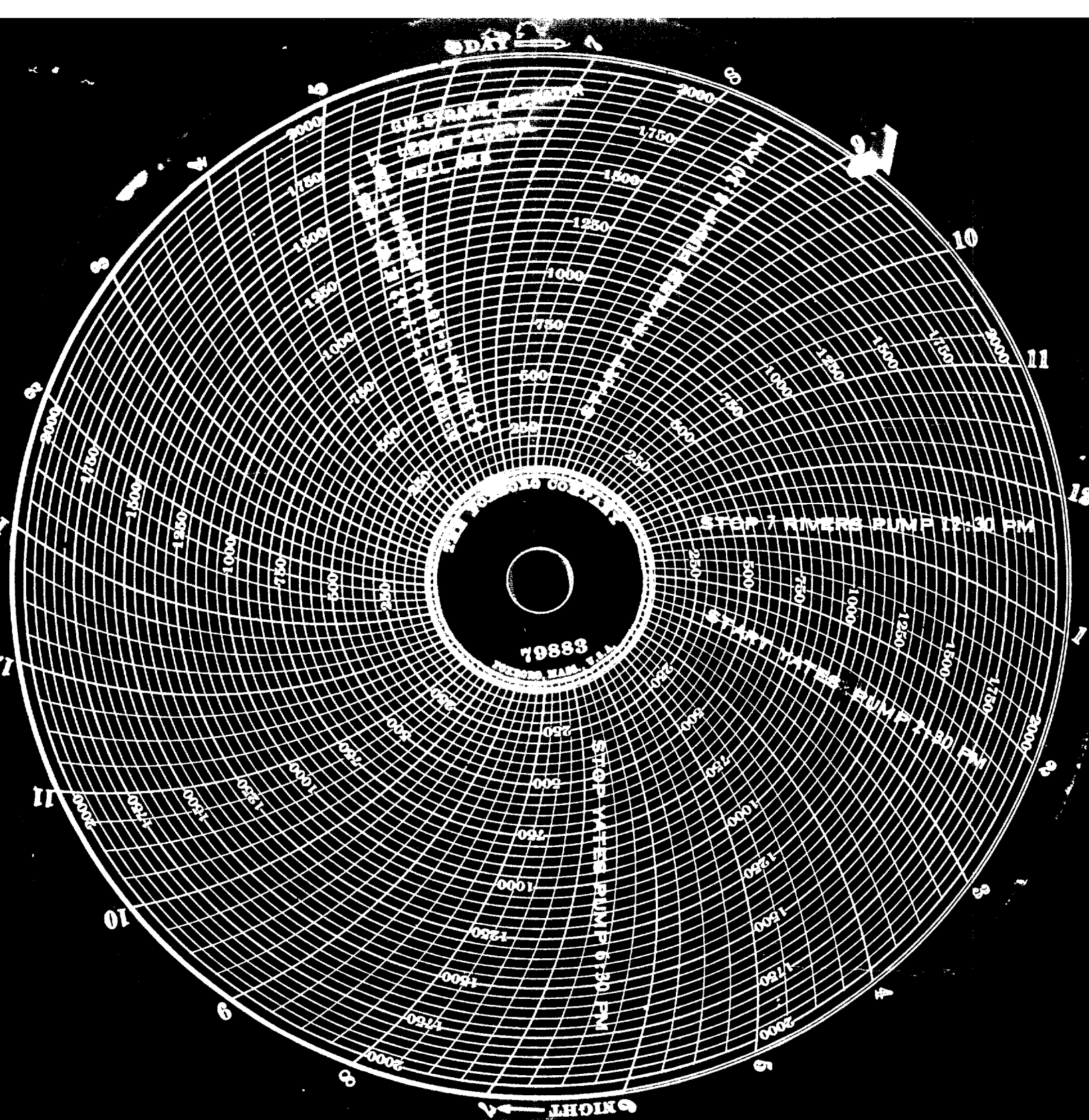
RECEIVED

MAY 23 1962

O. C. C.
ARTESIAL OFFICE



ACTUAL MECHANICAL INSTALLATION
OIL/OIL CONVENTIONAL DUAL COMPLETION
G.W. STRAKE-LEBOW FEDERAL NO.6
EDDY COUNTY, NEW MEXICO



NEW MEXICO OIL CONSERVATION COMMISSION
SOUTHEAST NEW MEXICO PACKER LEAKAGE TEST

Operator G. W. STRAKE			Lease LEBOW FEDERAL			Well No. 6		
Location of Well		Unit 1	Sec 25	Twp 19 SOUTH	Rge 30 EAST	County EDDY		
	Name of Reservoir or Pool		Type of Prod (Oil or Gas)	Method of Prod Flow, Art Lift	Prod. Medium (Tbg or Csg)	Choke Size		
Upper Compl	HACKBERRY YATES		OIL	PUMP	TUBING	OPEN		
Lower Compl	HACKBERRY SEVEN RIVERS		OIL	PUMP	TUBING	OPEN		

FLOW TEST NO. 1

Both zones shut-in at (hour, date): 8:00 AM MAY 15, 1962

	Upper Completion	Lower Completion
Well opened at (hour, date): 8:30 AM MAY 16, 1962		
Indicate by (X) the zone producing.....		X
Pressure at beginning of test.....	40	0
Stabilized? (Yes or No).....	YES	YES
Maximum pressure during test.....	40	0
Minimum pressure during test.....	40	0
Pressure at conclusion of test.....	40	0
Pressure change during test (Maximum minus Minimum).....	NONE	NONE
Was pressure change an increase or a decrease?.....	NONE	NONE
Well closed at (hour, date): 12:30 PM MAY 16, 1962	Total Time On Production 4 HOURS	
Oil Production	Gas Production	
During Test: 9 bbls; Grav. 18.2 ; During Test TSTM MCF; GOR TSTM		
Remarks 10% WATER MADE DURING TEST		

FLOW TEST NO. 2

	Upper Completion	Lower Completion
Well opened at (hour, date): 2:30 PM MAY 16, 1962		
Indicate by (X) the zone producing.....	X	
Pressure at beginning of test.....	40	0
Stabilized? (Yes or No).....	YES	YES
Maximum pressure during test.....	40	0
Minimum pressure during test.....	40	0
Pressure at conclusion of test.....	40	0
Pressure change during test (Maximum minus Minimum).....	NONE	NONE
Was pressure change an increase or a decrease?.....	NONE	NONE
Well closed at (hour, date): 6:30 PM MAY 16, 1962	Total time on Production 4 HOURS	
Oil Production	Gas Production	
During Test: 5 bbls; Grav. 31.4 ; During Test 1.45 MCF; GOR 290		
Remarks 0.2% WATER WAS MADE ON THIS TEST. SINCE THE PRESSURE IS SO LOW ON BOTH ZONES, THE		

GRAVITY, GAS AND WATER CUT ARE ADDITIONAL EVIDENCE THERE IS NO LEAKAGE IN THIS WELL.
I hereby certify that the information herein contained is true and complete to the best of my knowledge.

Approved MAY 23 1962 19
New Mexico Oil Conservation Commission
By W. A. Linscott
Title OIL AND GAS INSPECTOR
Operator G. W. STRAKE
By John W. West
Title ENGINEER
Date MAY 18, 1962

A packer integrity test shall be commenced on each multiple completed well within seven days after actual completion of the well, and annually thereafter as prescribed by the order authorizing the multiple completion. Such tests shall also be commenced on all multiple completions within seven days following recompletion and/or chemical or fracture treatment, and when ever remedial work has been done on a well during which the packer or the tubing have been disturbed. Tests shall also be taken at any time that communication is suspected or when requested by the Commission.

3. The packer leakage test shall commence when both zones of the dual completion are shut-in for pressure stabilization. Both zones shall remain shut-in until the well-head pressure in each has stabilized and for a minimum of two hours thereafter, provided however, that they need not remain shut-in more than 24 hours.

4 For Flow Test No. 1, one zone of the dual completion shall be produced at the normal rate of production while the other zone remains shut-in. Each test shall be continued until the flowing wellhead pressure has become stabilized and for a minimum of two hours thereafter, provided however, that the flow test need not continue for more than 24 hours.

4.1. From test No. 1 shall be conducted even though no leak was indicated during first test No. 1. Procedure for first test No. 2 is to be the same as for first test No. 1 except that the previously produced zone shall remain stationary while the previously shut-in zone is produced.

8. The results of the above-described tests shall be filed in triplicate at the District Office of the New Mexico Oil Conservation Commission at Southeast New Mexico Packer Leakage Test Form Revised 11-1-58, together with the original pressure recording gauge charts with all the pressure readings which were taken indicated thereon. In lieu of filing the said charts, the operator may construct a pressure versus time curve for each zone of each test, indicating thereon all pressure changes with any as reflected by the gauge charts as well as all dead-weight pressure readings which were taken. If the pressure curve is submitted, the original chart must be permanently filed in the operator's office. Form C-116 shall also accompany the Packer Leakage Test Form when the test period coincides with a gas-oil ratio test period.

OIL CONSERVATION COMMISSION	
ARTESIA DISTRICT OFFICE	
No. Copies Received	3
DESCRIPTION	
OPERATOR	NO. FINISHED
SANITARY	1
PLACE OF USE	
STATE LAINE OFFICE	
U. S. G. S.	
TRANSPORTER	
FILE	2
BUREAU OF MINES	

R 30 E

G. W. STRAKE

GULF

UNION FEDERAL

C. R. HOLDER

COSDEN

26

25

I-H

G. W. STRAKE

FEDERAL

STATE

T
19
S

HASKINS

SOUTHERN FED.

LEBOW

FEDERAL

35

G. W. STRAKE

36

I-A

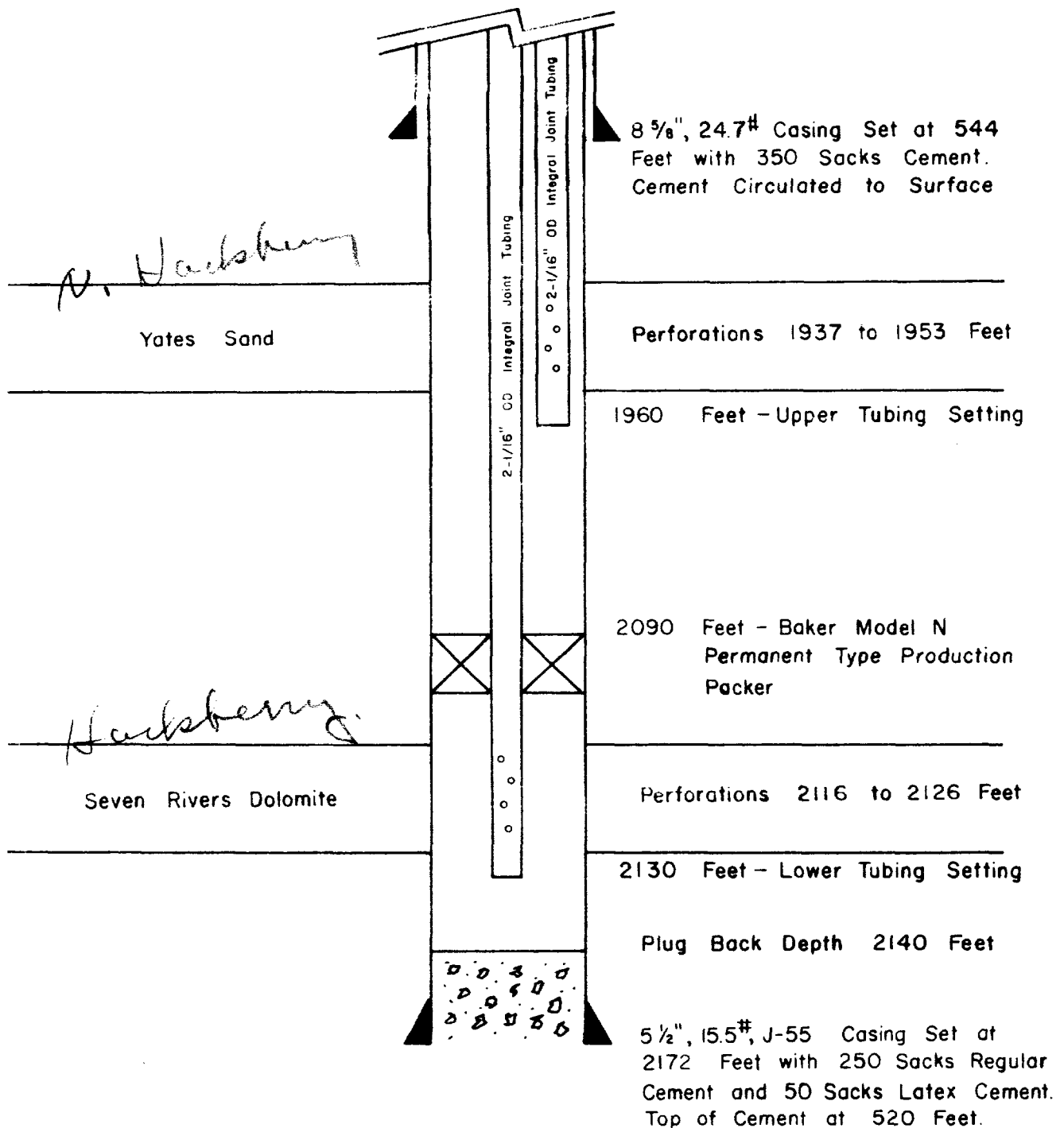
STATE

WELL LOCATION MAP
G. W. STRAKE-LEBOW FEDERAL LEASE
EDDY COUNTY, NEW MEXICO

● — PROPOSED DUAL COMPLETION

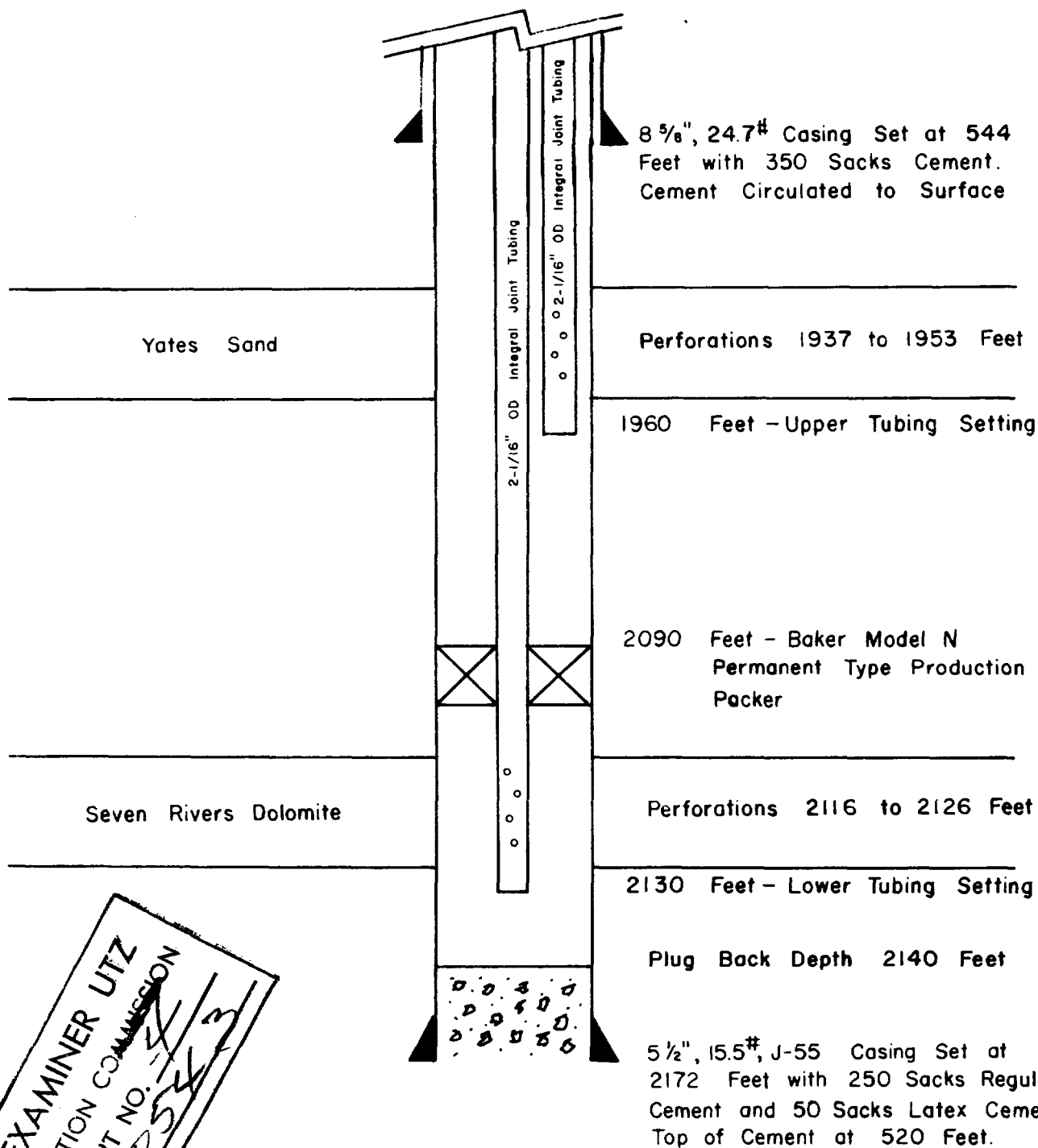
SCALE 1" = 1000 FEET

Page 2548



PROPOSED MECHANICAL INSTALLATION
OIL/OIL CONVENTIONAL DUAL COMPLETION
G.W. STRAKE-LEBOW FEDERAL NO.6
EDDY COUNTY, NEW MEXICO

Case 2543



BEFORE EXAMINER UTZ
OIL CONSERVATION COMMISSION
CASE NO. 2543

PROPOSED MECHANICAL INSTALLATION
OIL/OIL CONVENTIONAL DUAL COMPLETION
G.W. STRAKE-LEBOW FEDERAL NO.6
EDDY COUNTY, NEW MEXICO