

Schlumberger

COMPENSATED NEUTRON-FORMATION DENSITY

COUNTY LEA
FIELD or LOCATION DRINKARD
WELL LOCKHART B-1 #8
COMPANY CONTINENTAL OIL

COMPANY CONTINENTAL OIL COMPANY

WELL LOCKHART B-1 #8

FIELD DRINKARD

COUNTY LEA STATE NEW MEXICO

Location: 1980' FNL & 660' FNL,
UNIT "H",

Other Services:

DLL

Sec. 1 Twp. 22-S Rge. 36-E

data were furnished by the customer.

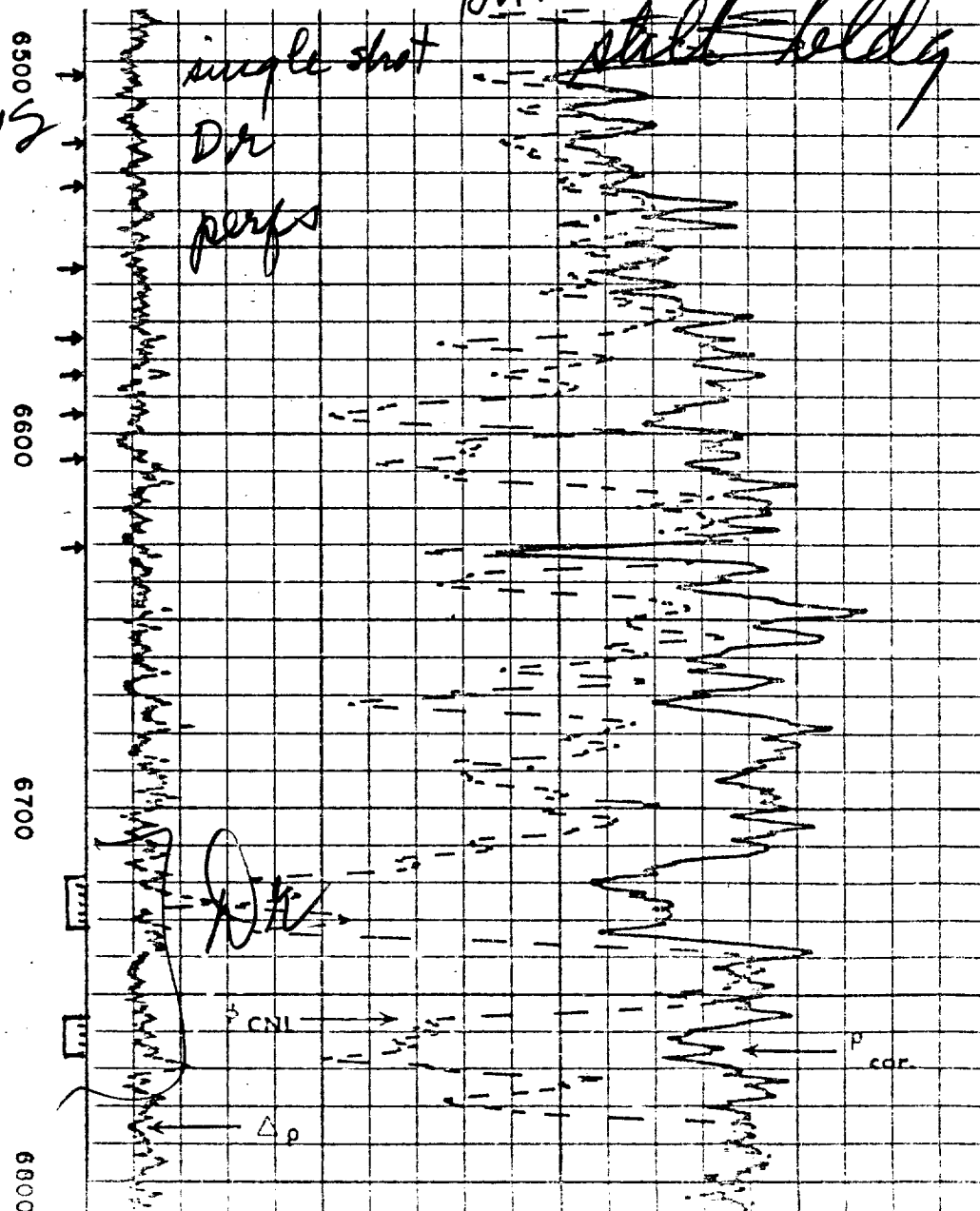
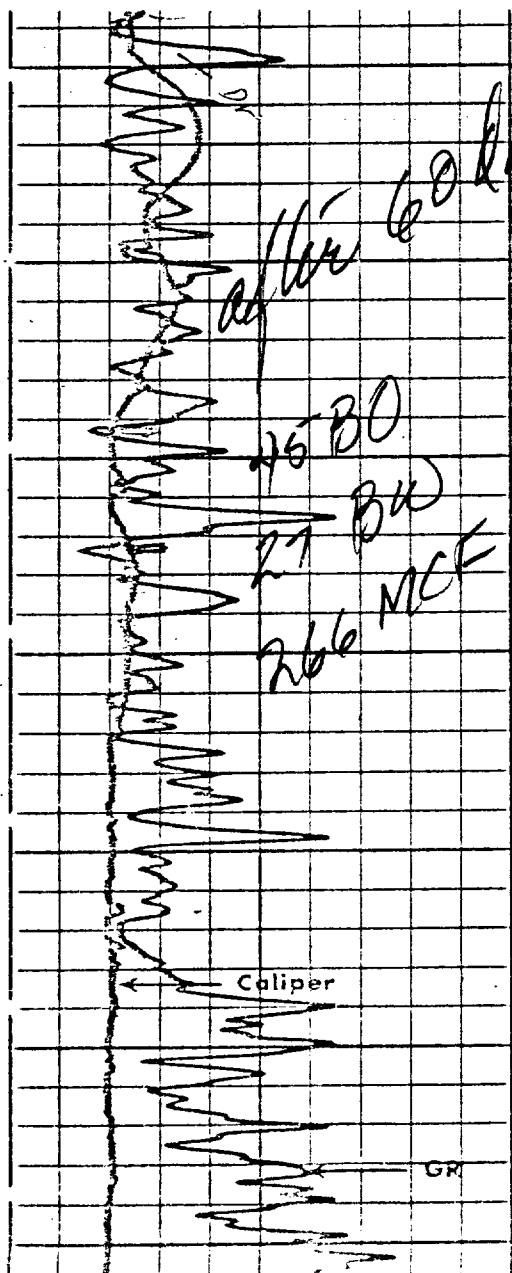
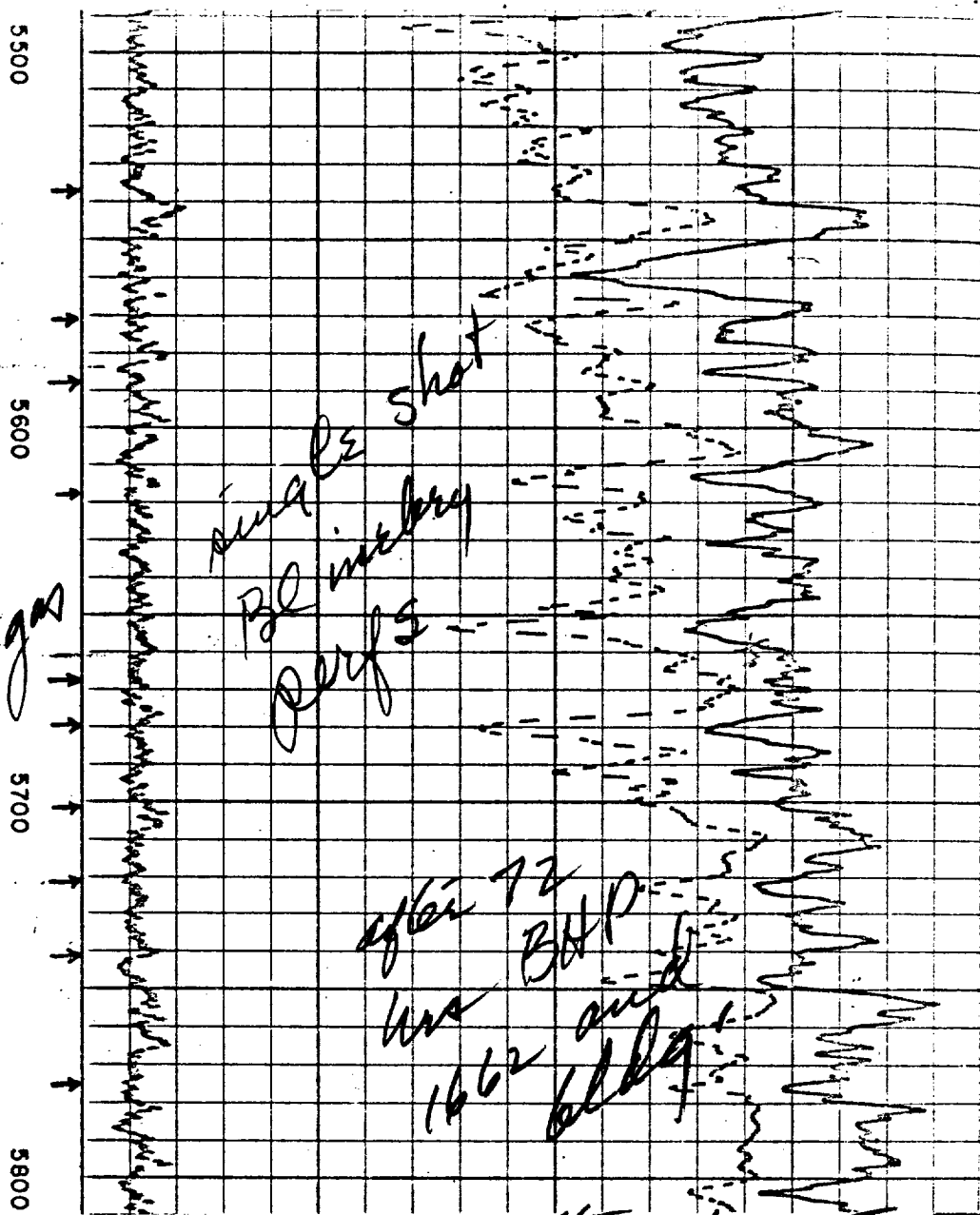
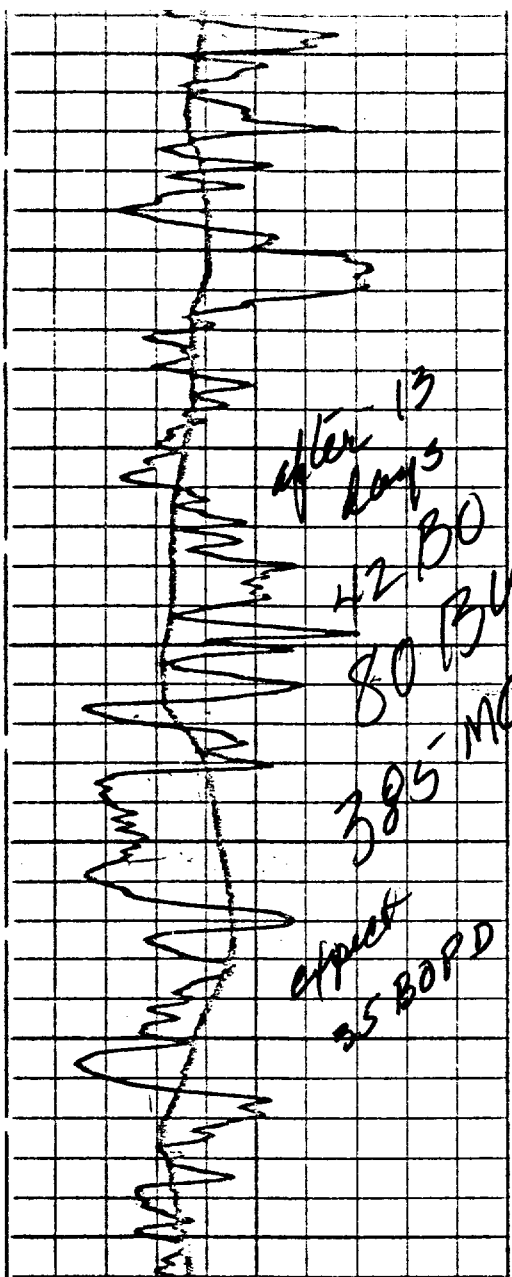
GES

Depth

Scale Up Hole

Scale Down Hole

5 1/2" csg.



BEFORE EXAMINER NUTTER

OIL CONSERVATION COMMISSION

Conoco EXHIBIT NO. 2

CASE NO. 5188