



Oryx Energy Company  
24 Smith Road  
P.O. Box 1861  
Midland TX 79702-1861  
915 688 0300

Southwestern  
Production Region

June 7, 1991

Oil Conservation Division  
P. O. Box 2088  
310 Old Santa Fe Tr., Rm. 206  
Santa Fe, New Mexico 87501

Attn: Mr. Michael Stogner

RE: Non-Standard Gas Proration Unit  
Unorthodox Location  
Oryx Energy Company  
Elliott "B" 15 No. 4  
A, 510' FNL & 660' FEL,  
Sec. 15, T-22-S, R-37-E  
Lea County, New Mexico

*Case 10357*

Dear Mr. Stogner:

Oryx Energy Company requests approval to plug back the captioned well from the Drinkard to the Tubb Pool. We are assigning this well an 80-acre non-standard gas proration unit as this is an 80-acre lease. This well is also an unorthodox location as it is 510' to the outer boundary of the proration unit.

All offset operators were notified by certified-return receipt mail on 6-7-91.

Yours truly,

ORYX ENERGY COMPANY

Maria L. Perez  
Proration Analyst  
915/688-0375

UNITED STATES  
DEPARTMENT OF THE INTERIOR  
GEOLOGICAL SURVEY

## APPLICATION FOR PERMIT TO DRILL, DEEPEN, OR, PLUG BACK

## 1a. TYPE OF WORK

DRILL ☐DEEPEN ☐PLUG BACK ☒

## b. TYPE OF WELL

OIL  
WELL ☐GAS  
WELL ☒

OTHER

SINGLE  
ZONE ☐MULTIPLE  
ZONE ☐

## 2. NAME OF OPERATOR

Oryx Energy Company

## 3. ADDRESS OF OPERATOR

P. O. Box 1861, Midland, Texas 79702

## 4. LOCATION OF WELL (Report location clearly and in accordance with any State requirements.\*)

At surface

A, 510' FNL &amp; 660' FEL

At proposed prod. zone

## 14. DISTANCE IN MILES AND DIRECTION FROM NEAREST TOWN OR POST OFFICE\*

5 miles South of Eunice

## 15. DISTANCE FROM PROPOSED\*

LOCATION TO NEAREST

PROPERTY OR LEASE LINE, FT.

(Also to nearest drig. unit line, if any)

510'

## 16. NO. OF ACRES IN LEASE

80

17. NO. OF ACRES ASSIGNED  
TO THIS WELL

80

## 18. DISTANCE FROM PROPOSED LOCATION\*

TO NEAREST WELL, DRILLING, COMPLETED,  
OR APPLIED FOR, ON THIS LEASE, FT.

## 19. PROPOSED DEPTH

6484 TD

6200 PBD

## 20. ROTARY OR CABLE TOOLS

--

## 21. ELEVATIONS (Show whether DF, RT, GR, etc.)

3388' GR

## 22. APPROX. DATE WORK WILL START\*

ASAP

## 23.

## PROPOSED CASING AND CEMENTING PROGRAM

SIZE OF HOLE	SIZE OF CASING	WEIGHT PER FOOT	SETTING DEPTH	QUANTITY OF CEMENT
13 3/8"	10 3/4"	32.75	194'	135 sxs - Surface
9 7/8"	7 7/8"	26.40 #	2760'	1500 sxs - Surface
6 3/4"	5 1/2"	17#	6429'	445 sxs TOC 2725' T.S.

Plug back from the Drinkard to the Tubb Pool.

80-acre Non-Standard Gas Proration Unit (requires 160 acs.)

Unorthodox Location 510' to outer boundary of proration unit (requires no closer than 660'

This will be dual well with the Blinbrey Pool.

1. MIRU PU. NU BOP. DROP SV & TEST TBG TO 5500 PSI. RLSE  
LOK-SET PKR & POH. IF TBG DOES NOT PRES TEST, TEST WHILE RIH  
IN STEP 4 & REPLACE AS NECESSARY.

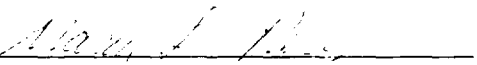
2. RU WSI. SET CIBP @ 6200'. DUMP BAIL 35' CMT ON TOP.

(Cont. to Pg. 2)

IN ABOVE SPACE DESCRIBE PROPOSED PROGRAM: If proposal is to deepen or plug back, give data on present productive zone and proposed new productive zone. If proposal is to drill or deepen directionally, give pertinent data on subsurface locations and measured and true vertical depths. Give blowout preventer program, if any.

## 24.

SIGNED



TITLE

Proration Analyst

DATE

6-7-91

(This space for Federal or State office use)

PERMIT NO.

APPROVAL DATE

APPROVED BY

TITLE

DATE

CONDITIONS OF APPROVAL, IF ANY:

23. Proposed Casing and Cementing Program:













3. NU LUBRICATOR. WSI PERF TUBB 6002-40', 6080-6116', 6122-32' BY WELEX GR/N/CCL LOG DATED 10-1-69 W/ 4" HSC, 23 GC, 2 JSPF, 168 HOLES, 120 DEGREE PHASING.
4. RIH W/ 4-3/4" RB & 5-1/2" CSG SCPR ON 2-3/8" TBG. WORK CSG SCPR THOROUGHLY THRU PKR SETTING INTERVAL 5870-5970'. LOWER TS TO 6140'. RU DS. SPOT 200 GAL 20% NEFE HCL ACROSS PERFS. POH.
5. RIH W/ 5-1/2" LOK-SET PKR W/ PUMP OUT PLUG IN PLACE (SET TO SHEAR @ 4000 PSI), & SN ON 2-3/8" TBG. SET PKR @ 5920' W/ 15 PTS COMP. ND BOP. NU WH. PREPARE SURFACE LINES FOR IMMEDIATE FLOWBACK. DS ACDZ TUBB PERFS AS FOLLOWS:
  - A. LOAD TBG W/ 10 GAL LSE WTR FOLLOWED BY 400 GAL 20% NEFE HCL. (FL SHOULD BE AT 3460' FS).
  - B. PUMP N2 DOWN TBG @ 15 MSCF/MIN TO SHEAR PUMP OUT PLUG. MAX PRES 5500 PSI.
  - C. AFTER PUMP OUT PLUG SHEARS, CONTINUE PUMPING N2 @ 15 MSCF/MIN WHILE ALSO PUMPING 2000 GAL 20% NEFE HCL @ 2 BPM.
  - D. FLUSH W/ 40 MSCF N2 @ 15 MSCF/MIN.
6. FLOW WELL TO TANK IMMEDIATELY AT MAX RATE. AFTER WELL BEGINS PRODUCING PRIMARILY FORMATION GAS, CHOKE WELL BACK AS NECESSARY TO MAINTAIN STABLE TBG PRESSURE. WHEN WELL CLEANS UP, TURN TO BATTERY TO OBTAIN TEST RATE. RR.
7. RUN BUILDUP & 4 POINT POTENTIAL TESTS & OBTAIN GAS SAMPLE AS DIRECTED BY ENGINEERING.

OFFSET OPERATORS

Elliott "B" 15 No. 4

A, Sec. 15, T-22-S, R-37-E  
Lea County, New Mexico

1. Amerado Hess Corp.  
P. O. Box 2040  
Tulsa, OK 74102
2. Anadarko Petroleum Corp.  
P. O. Box 1330  
Houston, TX 77251
3. Chevron Co., U.S.A.  
P. O. Box 1635  
Houston, TX 77251
4. Conoco, Inc.  
P. O. Box 2197, PR 2040  
Houston, TX 77252
5. Exxon Company, USA  
P. O. Box 2180  
Houston, TX 77001
6. Getty Oil Co.  
P. O. Box 3109  
Midland, TX 79702
7. Hawkins Oil & Gas, Inc.  
P. O. Box 1282  
Liberal, KS 67905
8. John H. Hendrix Corp.  
223 W. Wall, Ste. 525  
Midland, TX 79701
9. Southwest Royalties, Inc.  
P. O. Drawer 11390  
Midland, TX 79702
10. The Standard Oil Company  
200 Public Square  
Cleveland, OH 44114 - 2375
11. Texaco Producing, Inc.  
P. O. Box 3109  
Midland, TX 79702

T22S,R37E,SEC10 LTR UNIT N  GETTY OIL CO. EXXON CO. USA TEXACO PRODUCING INC	T22S,R37E,SEC10 LTR UNIT O  TEXACO PRODUCING INC	T22S,R37E,SEC10 LTR UNIT P  EXXON CO. USA AMERADA HESS CORP.	T22S,R37E,SEC11 LTR UNIT M  EXXON CO. USA JOHN H. HENDRIX CORP SOUTHWEST ROYALTIES INC
T22S,R37E,SEC15 LTR UNIT C  JOHN H HENDRIX CORP	T22S,R37E,SEC15 LTR UNIT B  ORYX ENERGY CO	T22S,R37E,SEC15 LTR UNIT A  SUBJECT WELL #4 ORYX ENERGY CO	T22S,R37E,SEC14 LTR UNIT D  CHEVRON CO. USA
T22S,R37E,SEC15 LTR UNIT F  ANADARKO PETROLEUM INC HAWKINS OIL & GAS INC	T22S,R37E,SEC15 LTR UNIT G  CONOCO, INC ANADARKO PETROLEUM INC	T22S,R37E,SEC15 LTR UNIT H  Standard Oil Co. EXXON CO. USA HAWKINS OIL&GAS INC	T22S,R37E,SEC14 LTR UNIT E  ANADARKO PETROLEUM INC CHEVRON USA INC

0 mi 0.25 mi



	
<b>Oryx Energy Company</b>	
<b>ELLIOTT "B" 15 LEASE AREA</b>	
<b>T22-S, R37-E</b>	
<b>LEA COUNTY, NEW MEXICO</b>	
<b>OFFSET OPERATOR DATA</b>	<b>DATE</b>
<b>1. CONVEYANCE</b>	<b>9/91</b>
<b>2. CONVEYANCE</b>	<b>9/91</b>
<b>3. CONVEYANCE</b>	<b>9/91</b>
<b>4. CONVEYANCE</b>	<b>9/91</b>
<b>5. CONVEYANCE</b>	<b>9/91</b>
<b>6. CONVEYANCE</b>	<b>9/91</b>
<b>7. CONVEYANCE</b>	<b>9/91</b>
<b>8. CONVEYANCE</b>	<b>9/91</b>
<b>9. CONVEYANCE</b>	<b>9/91</b>
<b>10. CONVEYANCE</b>	<b>9/91</b>
<b>11. CONVEYANCE</b>	<b>9/91</b>
<b>12. CONVEYANCE</b>	<b>9/91</b>
<b>13. CONVEYANCE</b>	<b>9/91</b>
<b>14. CONVEYANCE</b>	<b>9/91</b>
<b>15. CONVEYANCE</b>	<b>9/91</b>
<b>16. CONVEYANCE</b>	<b>9/91</b>
<b>17. CONVEYANCE</b>	<b>9/91</b>
<b>18. CONVEYANCE</b>	<b>9/91</b>
<b>19. CONVEYANCE</b>	<b>9/91</b>
<b>20. CONVEYANCE</b>	<b>9/91</b>
<b>21. CONVEYANCE</b>	<b>9/91</b>
<b>22. CONVEYANCE</b>	<b>9/91</b>
<b>23. CONVEYANCE</b>	<b>9/91</b>
<b>24. CONVEYANCE</b>	<b>9/91</b>
<b>25. CONVEYANCE</b>	<b>9/91</b>
<b>26. CONVEYANCE</b>	<b>9/91</b>
<b>27. CONVEYANCE</b>	<b>9/91</b>
<b>28. CONVEYANCE</b>	<b>9/91</b>
<b>29. CONVEYANCE</b>	<b>9/91</b>
<b>30. CONVEYANCE</b>	<b>9/91</b>
<b>31. CONVEYANCE</b>	<b>9/91</b>
<b>32. CONVEYANCE</b>	<b>9/91</b>
<b>33. CONVEYANCE</b>	<b>9/91</b>
<b>34. CONVEYANCE</b>	<b>9/91</b>
<b>35. CONVEYANCE</b>	<b>9/91</b>
<b>36. CONVEYANCE</b>	<b>9/91</b>
<b>37. CONVEYANCE</b>	<b>9/91</b>
<b>38. CONVEYANCE</b>	<b>9/91</b>
<b>39. CONVEYANCE</b>	<b>9/91</b>
<b>40. CONVEYANCE</b>	<b>9/91</b>
<b>41. CONVEYANCE</b>	<b>9/91</b>
<b>42. CONVEYANCE</b>	<b>9/91</b>
<b>43. CONVEYANCE</b>	<b>9/91</b>
<b>44. CONVEYANCE</b>	<b>9/91</b>
<b>45. CONVEYANCE</b>	<b>9/91</b>
<b>46. CONVEYANCE</b>	<b>9/91</b>
<b>47. CONVEYANCE</b>	<b>9/91</b>
<b>48. CONVEYANCE</b>	<b>9/91</b>
<b>49. CONVEYANCE</b>	<b>9/91</b>
<b>50. CONVEYANCE</b>	<b>9/91</b>
<b>51. CONVEYANCE</b>	<b>9/91</b>
<b>52. CONVEYANCE</b>	<b>9/91</b>
<b>53. CONVEYANCE</b>	<b>9/91</b>
<b>54. CONVEYANCE</b>	<b>9/91</b>
<b>55. CONVEYANCE</b>	<b>9/91</b>
<b>56. CONVEYANCE</b>	<b>9/91</b>
<b>57. CONVEYANCE</b>	<b>9/91</b>
<b>58. CONVEYANCE</b>	<b>9/91</b>
<b>59. CONVEYANCE</b>	<b>9/91</b>
<b>60. CONVEYANCE</b>	<b>9/91</b>
<b>61. CONVEYANCE</b>	<b>9/91</b>
<b>62. CONVEYANCE</b>	<b>9/91</b>
<b>63. CONVEYANCE</b>	<b>9/91</b>
<b>64. CONVEYANCE</b>	<b>9/91</b>
<b>65. CONVEYANCE</b>	<b>9/91</b>
<b>66. CONVEYANCE</b>	<b>9/91</b>
<b>67. CONVEYANCE</b>	<b>9/91</b>
<b>68. CONVEYANCE</b>	<b>9/91</b>
<b>69. CONVEYANCE</b>	<b>9/91</b>
<b>70. CONVEYANCE</b>	<b>9/91</b>
<b>71. CONVEYANCE</b>	<b>9/91</b>
<b>72. CONVEYANCE</b>	<b>9/91</b>
<b>73. CONVEYANCE</b>	<b>9/91</b>
<b>74. CONVEYANCE</b>	<b>9/91</b>
<b>75. CONVEYANCE</b>	<b>9/91</b>
<b>76. CONVEYANCE</b>	<b>9/91</b>
<b>77. CONVEYANCE</b>	<b>9/91</b>
<b>78. CONVEYANCE</b>	<b>9/91</b>
<b>79. CONVEYANCE</b>	<b>9/91</b>
<b>80. CONVEYANCE</b>	<b>9/91</b>
<b>81. CONVEYANCE</b>	<b>9/91</b>
<b>82. CONVEYANCE</b>	<b>9/91</b>
<b>83. CONVEYANCE</b>	<b>9/91</b>
<b>84. CONVEYANCE</b>	<b>9/91</b>
<b>85. CONVEYANCE</b>	<b>9/91</b>
<b>86. CONVEYANCE</b>	<b>9/91</b>
<b>87. CONVEYANCE</b>	<b>9/91</b>
<b>88. CONVEYANCE</b>	<b>9/91</b>
<b>89. CONVEYANCE</b>	<b>9/91</b>
<b>90. CONVEYANCE</b>	<b>9/91</b>
<b>91. CONVEYANCE</b>	<b>9/91</b>
<b>92. CONVEYANCE</b>	<b>9/91</b>
<b>93. CONVEYANCE</b>	<b>9/91</b>
<b>94. CONVEYANCE</b>	<b>9/91</b>
<b>95. CONVEYANCE</b>	<b>9/91</b>
<b>96. CONVEYANCE</b>	<b>9/91</b>
<b>97. CONVEYANCE</b>	<b>9/91</b>
<b>98. CONVEYANCE</b>	<b>9/91</b>
<b>99. CONVEYANCE</b>	<b>9/91</b>
<b>100. CONVEYANCE</b>	<b>9/91</b>

Submit to Appropriate  
District Office  
State Lease - 4 copies  
Fee Lease - 3 copies

State of New Mexico  
Energy, Minerals and Natural Resources Department

Form C-102  
Revised 1-1-89

**OIL CONSERVATION DIVISION**

P.O. Box 2088  
Santa Fe, New Mexico 87504-2088

**DISTRICT I**  
P.O. Box 1980, Hobbs, NM 88240

**DISTRICT II**  
P.O. Drawer DD, Artesia, NM 88210

**DISTRICT III**  
1000 Rio Brazos Rd., Aztec, NM 87410

**WELL LOCATION AND ACREAGE DEDICATION PLAT**

All Distances must be from the outer boundaries of the section

Operator <b>Oryx Energy Company</b>			Lease <b>Elliott "B" 15</b>		Well No. <b>4</b>
Unit Letter <b>A</b>	Section <b>15</b>	Township <b>22-S</b>	Range <b>37-E</b>	County <b>Lea</b>	
Actual Footage Location of Well: <b>510</b> feet from the <b>North</b> line and <b>660</b> feet from the <b>East</b> line					
Ground level Elev. <b>3388' GR</b>		Producing Formation <b>Tubb</b>		Pool <b>Tubb</b>	
					Dedicated Acreage: <b>80</b> Acres

1. Outline the acreage dedicated to the subject well by colored pencil or hatchure marks on the plat below.

2. If more than one lease is dedicated to the well, outline each and identify the ownership thereof (both as to working interest and royalty).

3. If more than one lease of different ownership is dedicated to the well, have the interest of all owners been consolidated by communitization, unitization, force-pooling, etc.?

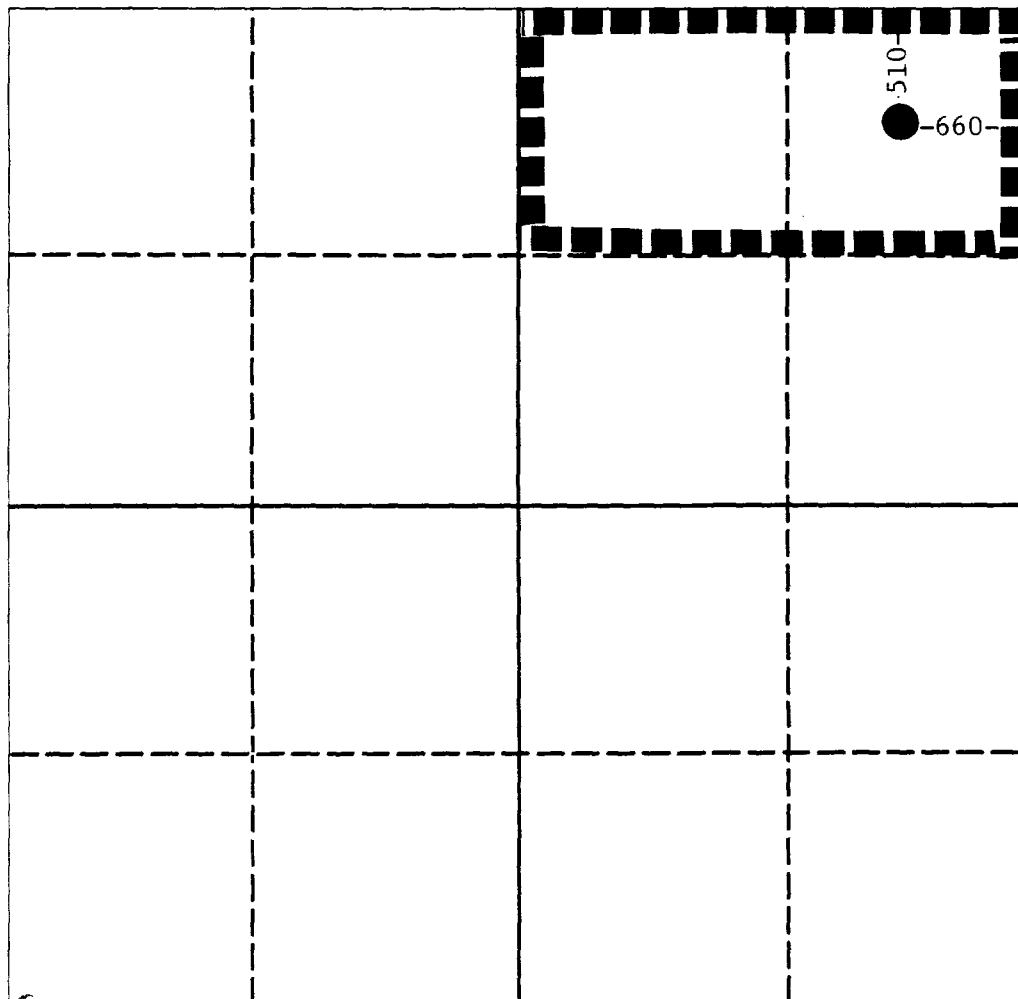
☐ Yes

☐ No

If answer is "yes" type of consolidation \_\_\_\_\_

If answer is "no" list the owners and tract descriptions which have actually been consolidated. (Use reverse side of this form if necessary.) \_\_\_\_\_

No allowable will be assigned to the well until all interests have been consolidated (by communitization, unitization, forced-pooling, or otherwise) or until a non-standard unit, eliminating such interest, has been approved by the Division.



**OPERATOR CERTIFICATION**

I hereby certify that the information contained herein is true and complete to the best of my knowledge and belief.

Signature \_\_\_\_\_

Printed Name \_\_\_\_\_

**Maria L. Perez**

Position \_\_\_\_\_

**Proration Analyst**

Company \_\_\_\_\_

**Oryx Energy Company**

Date \_\_\_\_\_

**6-7-91**

**SURVEYOR CERTIFICATION**

I hereby certify that the well location shown on this plat was plotted from field notes of actual surveys made by me or under my supervision, and that the same is true and correct to the best of my knowledge and belief.

Date Surveyed \_\_\_\_\_

Signature & Seal of  
Professional Surveyor \_\_\_\_\_

Certificate No. \_\_\_\_\_

0 330 660 990 1320 1650 1980 2310 2640 2000 1500 1000 500 0

**DISTRICT I**  
P.O.Box 1980, Hobbs, NM 88241-1980

**DISTRICT II**  
P.O. Drawer DD, Artesia, NM 88211-0719

**DISTRICT III**  
1000 Rio Brazos Rd, Aztec, NM 87410

State of New Mexico  
Energy, Minerals and Natural Resources Department

**OIL CONSERVATION DIVISION**

P.O. Box 2088  
Santa Fe, New Mexico 87504-2088

Form C-107  
Revised 4-1-91

Filing Instructions  
Bottom of Page

**APPLICATION FOR MULTIPLE COMPLETION**

Oryx Energy Company

P. O. Box 1861, Midland, Texas 79702

Operator	Address
Elliott "B" 15 No. 4,	A, 510' FNL & 660' FEL, Lea
Lease	Well No. Unit Ltr. - Sec - Twp - Rge County

All applicants for multiple completion must complete Items 1 and 2 below.

1. The following facts are submitted:	Upper Zone	Intermediate Zone	Lower Zone
a. Name of Pool and Formation	Blinebry		Tubb
b. Top and Bottom of Pay Section (Perforations)	5425 5535		6002 6132
c. Type of production (Oil or Gas)	Gas		Gas
d. Method of Production (Flowing or Artificial Lift)	Flowing		Flowing
e. Daily Production <input checked="" type="checkbox"/> Actual Blinebry <input checked="" type="checkbox"/> Estimated Tubb Oil Bbls. Gas MCF Water Bbls.	128 MCFPD		400 MCFPD

2. The following must be attached:
- Diagrammatic Sketch of the Multiple Completion, showing all casing strings, including diameters and setting depths, centralizers and/or turbolizers and location thereof, quantities used and top of cement, perforated intervals, tubing strings, including diameters and setting depth, location and type of packers and side door chokes, and such other information as may be pertinent.
  - Plat showing the location of all wells on applicant's lease, all offset wells on offset leases, and the names and addresses of operators of all leases offsetting applicant's lease.
  - Electrical log of the well or other acceptable log with tops and bottoms of producing zones and intervals of perforation indicated thereon. (If such log is not available at the time application is filed it shall be submitted as provided by Rule 112-A.)

**OPERATOR:**

I hereby certify above information is true and complete to best of my knowledge, and belief.

Signature Maria L. Perez

Printed Name & Title Proration Analyst

Date 6-7-91 Telephone 915/ 688-0375

**OIL CONSERVATION DIVISION**

Approved by: \_\_\_\_\_

Title: \_\_\_\_\_

Date: \_\_\_\_\_

NOTE: If the proposed multiple completion will result in an unorthodox well location and/or a non-standard proration unit in one or more of the producing zones, then separate application for approval of the same should be filed simultaneously with this application.

**FILING INSTRUCTIONS:**

- District Approval** -- See rule 112-A-B -- Submit 4 copies of Form C-107 with attachments to appropriate district office.
- Division Director Administrative Approval** -- See Rule 112-C -- Submit 2 copies of Form C-107 with attachments to Division office in Santa Fe and 2 copies of Form C-107 with attachments to appropriate district office.

## WELL COMPLETION SKETCHES SUN-5036-4-A

WELL

Elliott B 15 #4

FIELD

Tubb

DATE

4-17-91



PRESENT COMPLETION



SUGGESTED COMPLETION

## PERMANENT WELL BORE DATA

## DATA ON THIS COMPLETION

KB: 3398'

GL: 3388'

10<sup>3</sup>/<sub>4</sub>" 33# CS 194'

Cmt'd w/ 135 SX, Circ

7<sup>5</sup>/<sub>8</sub>" 26# CS 2760'

Cmt'd w/ 1500 SX, Circ

5<sup>1</sup>/<sub>2</sub>" 17# CS 6429'

Cmt'd w/ 105 SX, TOC

5380' (Temp). Perf 4

Holes @ 5375' Sg-zd

w/ 375 SX. TOC

2725' (Temp)

2<sup>3</sup>/<sub>8</sub>" 4.7# Tg  
5<sup>1</sup>/<sub>2</sub>" Lock-set PKR  
@ 5920'Perf Blinbry 5425-50',  
60-85', 5905-35', 4 SPFPerf Tubb 6002-40',  
6080-6116', 6122-32'

CIBP @ 6200' w/ 35' Cmt

Perf Drinkard 6264-6366',  
19 HolesCIBP @ 6420' w/ 1 SX  
Cmt on Top

Drinkard OH 6429-89'



Wetox  
Elm 8 15 #4  
GR/N/CCL  
10-1-69

COLLARS  
11' Deep

TOP TUBS  
5976 (2-18)

RECOMMENDED TUBS  
PERFS

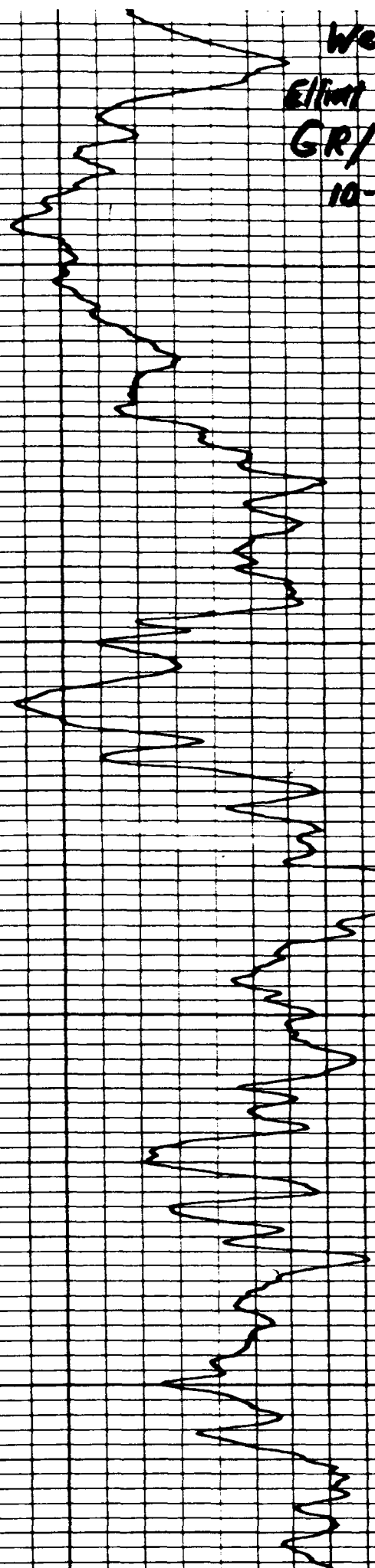
RECOMMENDED TUBS  
PERFS

6000

6050

6100

6150

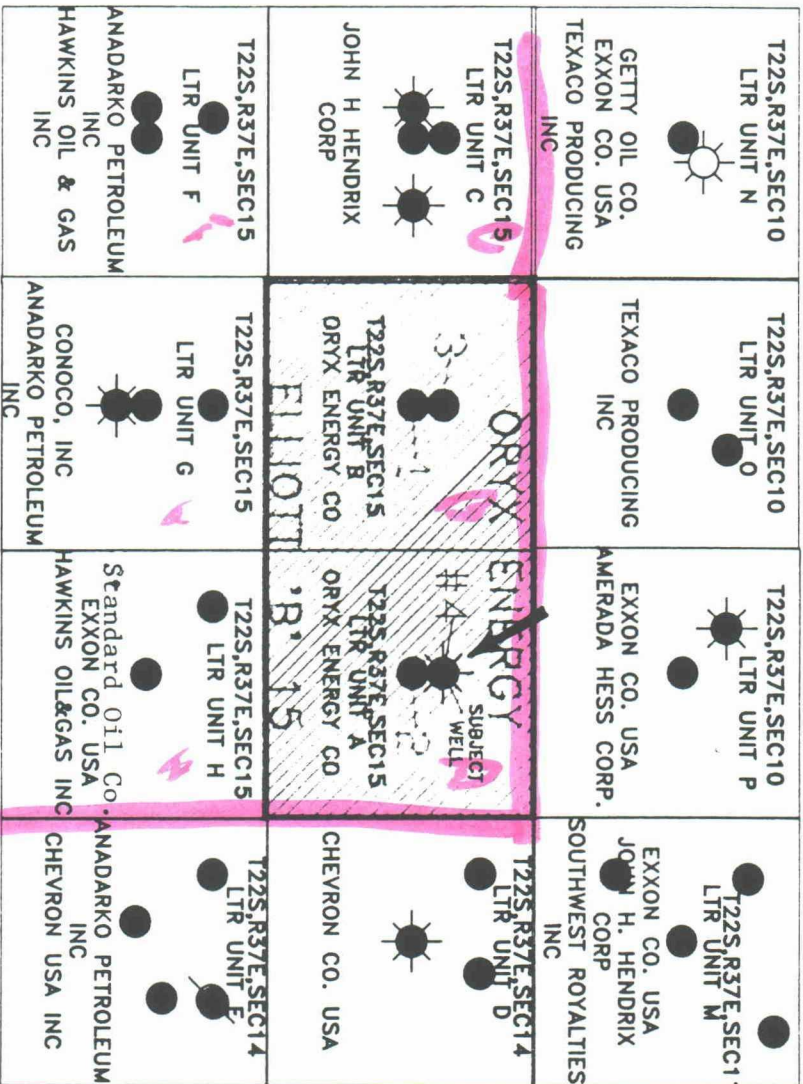


OFFSET OPERATORS

Elliott "B" 15 No. 4


A, Sec. 15, T-22-S, R-37-E  
Lea County, New Mexico

1. Amerado Hess Corp.  
P. O. Box 2040  
Tulsa, OK 74102
2. Anadarko Petroleum Corp.  
P. O. Box 1330  
Houston, TX 77251
3. Chevron Co., U.S.A.  
P. O. Box 1635  
Houston, TX 77251
4. Conoco, Inc.  
P. O. Box 2197, PR 2040  
Houston, TX 77252
5. Exxon Company, USA  
P. O. Box 2180  
Houston, TX 77001
6. Getty Oil Co.  
P. O. Box 3109  
Midland, TX 79702
7. Hawkins Oil & Gas, Inc.  
P. O. Box 1282  
Liberal, KS 67905
8. John H. Hendrix Corp.  
223 W. Wall, Ste. 525  
Midland, TX 79701
9. Southwest Royalties, Inc.  
P. O. Drawer 11390  
Midland, TX 79702
10. The Standard Oil Company  
200 Public Square  
Cleveland, OH 44114 - 2375
11. Texaco Producing, Inc.  
P. O. Box 3109  
Midland, TX 79702



0 mi  
0.25 mi



	
<b>ORXX Energy Company</b>	
<b>ELLIOTT "B" 15 LEASE AREA</b>	
<b>T22-S, R37-E</b>	
<b>LEA COUNTY, NEW MEXICO</b>	
<b>ORXX OPERATOR DATA</b>	
<b>DATE</b>	<b>TIME</b>
<b>4. COMPLETION</b>	<b>5. COMPLETION</b>
<b>6/71</b>	<b>6/71</b>
<b>SOUTHWESTERN</b>	
<b>ORXX ACQUIRED IN 1964</b>	



Oryx Energy Company  
24 Smith Road  
PO Box 1861  
Midland TX 79702-1861  
915 688 0300

Southwestern  
Production Region

June 7, 1991

Oil Conservation Division  
P. O. Box 2088  
310 Old Santa Fe Tr., Rm. 206  
Santa Fe, New Mexico 87501

*Case 10357*

Attn: Mr. Michael Stogner

RE: Non-Standard Gas Proration Unit  
Unorthodox Location  
Oryx Energy Company  
Elliott "B" 15 No. 4  
A, 510' FNL & 660' FEL,  
Sec. 15, T-22-S, R-37-E  
Lea County, New Mexico

Dear Mr. Stogner:

Oryx Energy Company requests approval to plug back the captioned well from the Drinkard to the Tubb Pool. We are assigning this well an 80-acre non-standard gas proration unit as this is an 80-acre lease. This well is also an unorthodox location as it is 510' to the outer boundary of the proration unit.

All offset operators were notified by certified-return receipt mail on 6-7-91.

Yours truly,

ORYX ENERGY COMPANY

Maria L. Perez  
Proration Analyst  
915/688-0375

UNITED STATES  
DEPARTMENT OF THE INTERIOR  
GEOLOGICAL SURVEY

## APPLICATION FOR PERMIT TO DRILL, DEEPEN, OR, PLUG BACK

## 1A. TYPE OF WORK

DRILL ☐DEEPEN ☐PLUG BACK ☒

## B. TYPE OF WELL

OIL  
WELL ☐GAS  
WELL ☒

OTHER

SINGLE  
ZONE ☐MULTIPLE  
ZONE ☐

## 2. NAME OF OPERATOR

Oryx Energy Company

## 3. ADDRESS OF OPERATOR

P. O. Box 1861, Midland, Texas 79702

## 4. LOCATION OF WELL (Report location clearly and in accordance with any State requirements.)\*

At surface

A, 510' FNL &amp; 660' FEL

At proposed prod. zone

## 14. DISTANCE IN MILES AND DIRECTION FROM NEAREST TOWN OR POST OFFICE\*

5 miles South of Eunice

## 15. DISTANCE FROM PROPOSED\*

LOCATION TO NEAREST  
PROPERTY OR LEASE LINE, FT.  
(Also to nearest drlg. unit line, if any)

510'

## 16. NO. OF ACRES IN LEASE

80

17. NO. OF ACRES ASSIGNED  
TO THIS WELL

80

18. DISTANCE FROM PROPOSED LOCATION\*  
TO NEAREST WELL, DRILLING, COMPLETED,  
OR APPLIED FOR, ON THIS LEASE, FT.

## 19. PROPOSED DEPTH

6484 TD  
6200 PBD

## 20. ROTARY OR CABLE TOOLS

--

## 21. ELEVATIONS (Show whether DF, RT, GR, etc.)

3388' GR

## 22. APPROX. DATE WORK WILL START\*

ASAP

## 23.

## PROPOSED CASING AND CEMENTING PROGRAM

SIZE OF HOLE	SIZE OF CASING	WEIGHT PER FOOT	SETTING DEPTH	QUANTITY OF CEMENT
13 3/8"	10 3/4"	32.75	194'	135 sxs - Surface
9 7/8"	7 7/8"	26.40 #	2760'	1500 sxs - Surface
6 3/4"	5 1/2"	17#	6429'	445 sxs TOC 2725' T.S.

Plug back from the Drinkard to the Tubb Pool.

80-acre Non-Standard Gas Proration Unit (requires 160 acs.)

Unorthodox Location 510' to outer boundary of proration unit (requires no closer than 660'

This will be dual well with the Blinebry Pool.

1. MIRU PU. NU BOP. DROP SV & TEST TBG TO 5500 PSI. RLSE  
LOK-SET PKR & POH. IF TBG DOES NOT PRES TEST, TEST WHILE RIH  
IN STEP 4 & REPLACE AS NECESSARY.

2. RU WSI. SET CIBP @ 6200'. DUMP BAIL 35' CMT ON TOP.

(Cont. to Pg. 2)

IN ABOVE SPACE DESCRIBE PROPOSED PROGRAM: If proposal is to deepen or plug back, give data on present productive zone and proposed new productive zone. If proposal is to drill or deepen directionally, give pertinent data on subsurface locations and measured and true vertical depths. Give blowout preventer program, if any.

## 24.

SIGNED

TITLE Proration Analyst

DATE 6-7-91

(This space for Federal or State office use)

PERMIT NO.

APPROVAL DATE

APPROVED BY

TITLE

DATE

CONDITIONS OF APPROVAL, IF ANY:

23. Proposed Casing and Cementing Program:

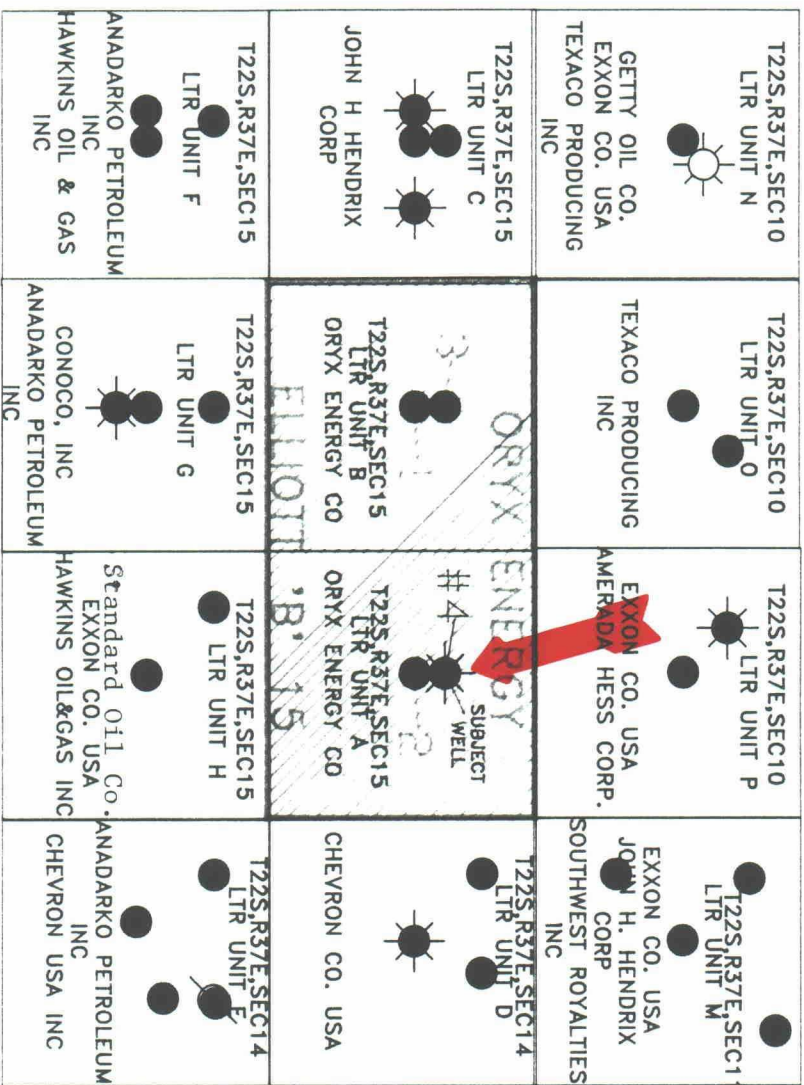
3. NU LUBRICATOR. WSI PERF TUBB 6002-40', 6080-6116', 6122-32' BY WELEX GR/N/CCL LOG DATED 10-1-69 W/ 4" HSC, 23 GC, 2 JSPF, 168 HOLES, 120 DEGREE PHASING.
4. RIH W/ 4-3/4" RB & 5-1/2" CSG SCPR ON 2-3/8" TBG. WORK CSG SCPR THOROUGHLY THRU PKR SETTING INTERVAL 5870-5970'. LOWER TS TO 6140'. RU DS. SPOT 200 GAL 20% NEFE HCL ACROSS PERFS. POH.
5. RIH W/ 5-1/2" LOK-SET PKR W/ PUMP OUT PLUG IN PLACE (SET TO SHEAR @ 4000 PSI), & SN ON 2-3/8" TBG. SET PKR @ 5920' W/ 15 PTS COMP. ND BOP. NU WH. PREPARE SURFACE LINES FOR IMMEDIATE FLOWBACK. DS ACDZ TUBB PERFS AS FOLLOWS:
  - A. LOAD TBG W/ 10 GAL LSE WTR FOLLOWED BY 400 GAL 20% NEFE HCL. (FL SHOULD BE AT 3460' FS).
  - B. PUMP N2 DOWN TBG @ 15 MSCF/MIN TO SHEAR PUMP OUT PLUG. MAX PRES 5500 PSI.
  - C. AFTER PUMP OUT PLUG SHEARS, CONTINUE PUMPING N2 @ 15 MSCF/MIN WHILE ALSO PUMPING 2000 GAL 20% NEFE HCL @ 2 BPM.
  - D. FLUSH W/ 40 MSCF N2 @ 15 MSCF/MIN.
6. FLOW WELL TO TANK IMMEDIATELY AT MAX RATE. AFTER WELL BEGINS PRODUCING PRIMARILY FORMATION GAS, CHOKE WELL BACK AS NECESSARY TO MAINTAIN STABLE TBG PRESSURE. WHEN WELL CLEANS UP, TURN TO BATTERY TO OBTAIN TEST RATE. RR.
7. RUN BUILDUP & 4 POINT POTENTIAL TESTS & OBTAIN GAS SAMPLE AS DIRECTED BY ENGINEERING.

OFFSET OPERATORS

Elliott "B" 15 No. 4

A, Sec. 15, T-22-S, R-37-E  
Lea County, New Mexico

1. Amerado Hess Corp.  
P. O. Box 2040  
Tulsa, OK 74102
2. Anadarko Petroleum Corp.  
P. O. Box 1330  
Houston, TX 77251
3. Chevron Co., U.S.A.  
P. O. Box 1635  
Houston, TX 77251
4. Conoco, Inc.  
P. O. Box 2197, PR 2040  
Houston, TX 77252
5. Exxon Company, USA  
P. O. Box 2180  
Houston, TX 77001
6. Getty Oil Co.  
P. O. Box 3109  
Midland, TX 79702
7. Hawkins Oil & Gas, Inc.  
P. O. Box 1282  
Liberal, KS 67905
8. John H. Hendrix Corp.  
223 W. Wall, Ste. 525  
Midland, TX 79701
9. Southwest Royalties, Inc.  
P. O. Drawer 11390  
Midland, TX 79702
10. The Standard Oil Company  
200 Public Square  
Cleveland, OH 44114 - 2375
11. Texaco Producing, Inc.  
P. O. Box 3109  
Midland, TX 79702



0 mi 0.25 mi



<b>ELLIOTT "B" 15 LEASE AREA</b> T22-S, R37-E LEA COUNTY, NEW MEXICO	
<b>ORRYX</b> OPERATOR DATA 1. COMPLETION 6/71 2. COMPLETION 6/71 3. COMPLETION 6/71 4. COMPLETION 6/71 5. COMPLETION 6/71 6. COMPLETION 6/71 7. COMPLETION 6/71 8. COMPLETION 6/71 9. COMPLETION 6/71 10. COMPLETION 6/71 11. COMPLETION 6/71 12. COMPLETION 6/71 13. COMPLETION 6/71 14. COMPLETION 6/71 15. COMPLETION 6/71 16. COMPLETION 6/71 17. COMPLETION 6/71 18. COMPLETION 6/71 19. COMPLETION 6/71 20. COMPLETION 6/71 21. COMPLETION 6/71 22. COMPLETION 6/71 23. COMPLETION 6/71 24. COMPLETION 6/71 25. COMPLETION 6/71 26. COMPLETION 6/71 27. COMPLETION 6/71 28. COMPLETION 6/71 29. COMPLETION 6/71 30. COMPLETION 6/71 31. COMPLETION 6/71 32. COMPLETION 6/71 33. COMPLETION 6/71 34. COMPLETION 6/71 35. COMPLETION 6/71 36. COMPLETION 6/71 37. COMPLETION 6/71 38. COMPLETION 6/71 39. COMPLETION 6/71 40. COMPLETION 6/71 41. COMPLETION 6/71 42. COMPLETION 6/71 43. COMPLETION 6/71 44. COMPLETION 6/71 45. COMPLETION 6/71 46. COMPLETION 6/71 47. COMPLETION 6/71 48. COMPLETION 6/71 49. COMPLETION 6/71 50. COMPLETION 6/71 51. COMPLETION 6/71 52. COMPLETION 6/71 53. COMPLETION 6/71 54. COMPLETION 6/71 55. COMPLETION 6/71 56. COMPLETION 6/71 57. COMPLETION 6/71 58. COMPLETION 6/71 59. COMPLETION 6/71 60. COMPLETION 6/71 61. COMPLETION 6/71 62. COMPLETION 6/71 63. COMPLETION 6/71 64. COMPLETION 6/71 65. COMPLETION 6/71 66. COMPLETION 6/71 67. COMPLETION 6/71 68. COMPLETION 6/71 69. COMPLETION 6/71 70. COMPLETION 6/71 71. COMPLETION 6/71 72. COMPLETION 6/71 73. COMPLETION 6/71 74. COMPLETION 6/71 75. COMPLETION 6/71 76. COMPLETION 6/71 77. COMPLETION 6/71 78. COMPLETION 6/71 79. COMPLETION 6/71 80. COMPLETION 6/71 81. COMPLETION 6/71 82. COMPLETION 6/71 83. COMPLETION 6/71 84. COMPLETION 6/71 85. COMPLETION 6/71 86. COMPLETION 6/71 87. COMPLETION 6/71 88. COMPLETION 6/71 89. COMPLETION 6/71 90. COMPLETION 6/71 91. COMPLETION 6/71 92. COMPLETION 6/71 93. COMPLETION 6/71 94. COMPLETION 6/71 95. COMPLETION 6/71 96. COMPLETION 6/71 97. COMPLETION 6/71 98. COMPLETION 6/71 99. COMPLETION 6/71 100. COMPLETION 6/71	1. COMPLETION 6/71 2. COMPLETION 6/71 3. COMPLETION 6/71 4. COMPLETION 6/71 5. COMPLETION 6/71 6. COMPLETION 6/71 7. COMPLETION 6/71 8. COMPLETION 6/71 9. COMPLETION 6/71 10. COMPLETION 6/71 11. COMPLETION 6/71 12. COMPLETION 6/71 13. COMPLETION 6/71 14. COMPLETION 6/71 15. COMPLETION 6/71 16. COMPLETION 6/71 17. COMPLETION 6/71 18. COMPLETION 6/71 19. COMPLETION 6/71 20. COMPLETION 6/71 21. COMPLETION 6/71 22. COMPLETION 6/71 23. COMPLETION 6/71 24. COMPLETION 6/71 25. COMPLETION 6/71 26. COMPLETION 6/71 27. COMPLETION 6/71 28. COMPLETION 6/71 29. COMPLETION 6/71 30. COMPLETION 6/71 31. COMPLETION 6/71 32. COMPLETION 6/71 33. COMPLETION 6/71 34. COMPLETION 6/71 35. COMPLETION 6/71 36. COMPLETION 6/71 37. COMPLETION 6/71 38. COMPLETION 6/71 39. COMPLETION 6/71 40. COMPLETION 6/71 41. COMPLETION 6/71 42. COMPLETION 6/71 43. COMPLETION 6/71 44. COMPLETION 6/71 45. COMPLETION 6/71 46. COMPLETION 6/71 47. COMPLETION 6/71 48. COMPLETION 6/71 49. COMPLETION 6/71 50. COMPLETION 6/71 51. COMPLETION 6/71 52. COMPLETION 6/71 53. COMPLETION 6/71 54. COMPLETION 6/71 55. COMPLETION 6/71 56. COMPLETION 6/71 57. COMPLETION 6/71 58. COMPLETION 6/71 59. COMPLETION 6/71 60. COMPLETION 6/71 61. COMPLETION 6/71 62. COMPLETION 6/71 63. COMPLETION 6/71 64. COMPLETION 6/71 65. COMPLETION 6/71 66. COMPLETION 6/71 67. COMPLETION 6/71 68. COMPLETION 6/71 69. COMPLETION 6/71 70. COMPLETION 6/71 71. COMPLETION 6/71 72. COMPLETION 6/71 73. COMPLETION 6/71 74. COMPLETION 6/71 75. COMPLETION 6/71 76. COMPLETION 6/71 77. COMPLETION 6/71 78. COMPLETION 6/71 79. COMPLETION 6/71 80. COMPLETION 6/71 81. COMPLETION 6/71 82. COMPLETION 6/71 83. COMPLETION 6/71 84. COMPLETION 6/71 85. COMPLETION 6/71 86. COMPLETION 6/71 87. COMPLETION 6/71 88. COMPLETION 6/71 89. COMPLETION 6/71 90. COMPLETION 6/71 91. COMPLETION 6/71 92. COMPLETION 6/71 93. COMPLETION 6/71 94. COMPLETION 6/71 95. COMPLETION 6/71 96. COMPLETION 6/71 97. COMPLETION 6/71 98. COMPLETION 6/71 99. COMPLETION 6/71 100. COMPLETION 6/71



Submit to Appropriate  
District Office  
State Lease - 4 copies  
Fee Lease - 3 copies

State of New Mexico  
Energy, Minerals and Natural Resources Department

Form C-102  
Revised 1-1-89

**OIL CONSERVATION DIVISION**

P.O. Box 2088  
Santa Fe, New Mexico 87504-2088

**DISTRICT I**  
P.O. Box 1980, Hobbs, NM 88240

**DISTRICT II**  
P.O. Drawer DD, Artesia, NM 88210

**DISTRICT III**  
1000 Rio Brazos Rd., Aztec, NM 87410

**WELL LOCATION AND ACREAGE DEDICATION PLAT**

All Distances must be from the outer boundaries of the section

Operator <b>Oryx Energy Company</b>			Lease <b>Elliott "B" 15</b>		Well No. <b>4</b>
Unit Letter <b>A</b>	Section <b>15</b>	Township <b>22-S</b>	Range <b>37-E</b>	NMPM	County <b>Lea</b>
Actual Footage Location of Well: <b>510</b> feet from the <b>North</b> line and <b>660</b> feet from the <b>East</b> line					
Ground level Elev. <b>3388' GR</b>		Producing Formation <b>Tubb</b>		Pool <b>Tubb</b>	
					Dedicated Acreage: <b>80</b> Acres

1. Outline the acreage dedicated to the subject well by colored pencil or hatchure marks on the plat below.

2. If more than one lease is dedicated to the well, outline each and identify the ownership thereof (both as to working interest and royalty).

3. If more than one lease of different ownership is dedicated to the well, have the interest of all owners been consolidated by communitization, unitization, force-pooling, etc.?

☐

Yes

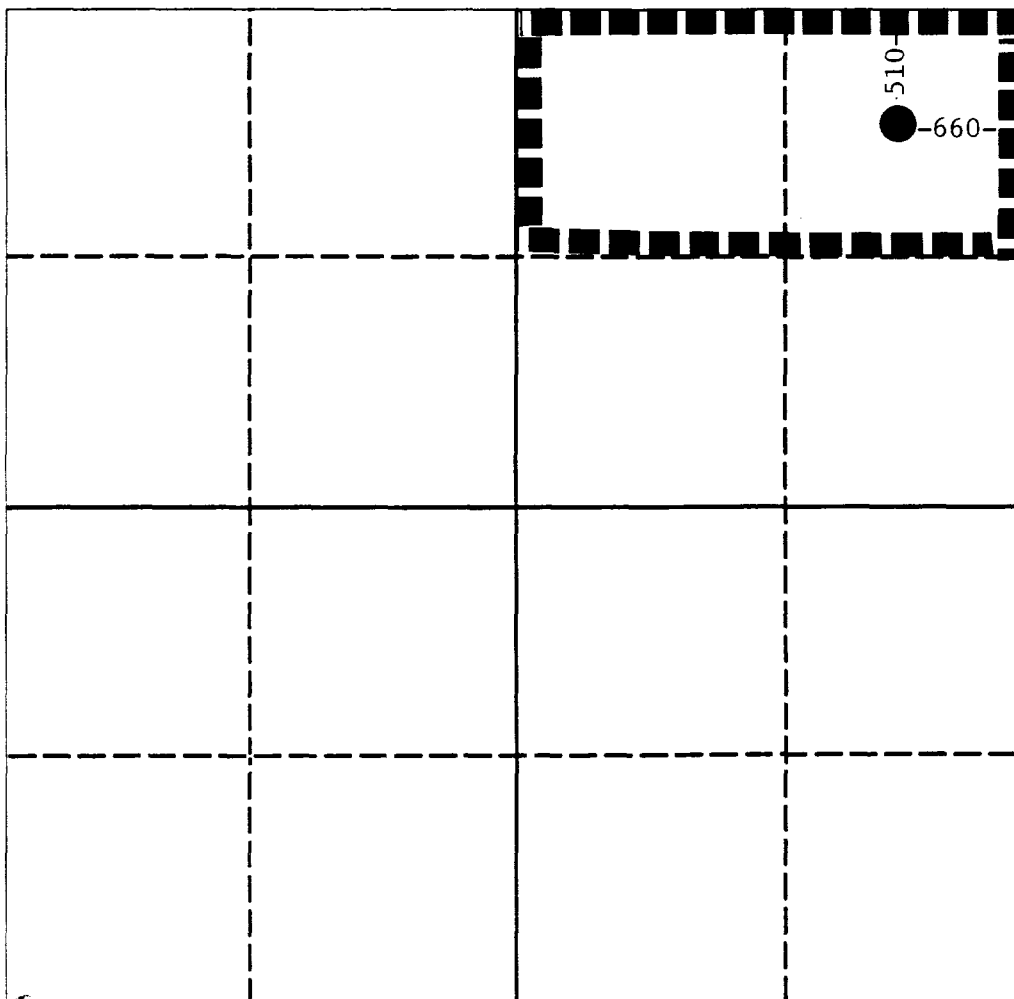
☐

No

If answer is "yes" type of consolidation \_\_\_\_\_

If answer is "no" list the owners and tract descriptions which have actually been consolidated. (Use reverse side of this form if necessary.) \_\_\_\_\_

No allowable will be assigned to the well until all interests have been consolidated (by communitization, unitization, forced-pooling, or otherwise) or until a non-standard unit, eliminating such interest, has been approved by the Division.



**OPERATOR CERTIFICATION**

I hereby certify that the information contained herein is true and complete to the best of my knowledge and belief.

Signature

Printed Name

**Maria L. Perez**

Position

**Proration Analyst**

Company

**Oryx Energy Company**

Date

**6-7-91**

**SURVEYOR CERTIFICATION**

I hereby certify that the well location shown on this plat was plotted from field notes of actual surveys made by me or under my supervision, and that the same is true and correct to the best of my knowledge and belief.

Date Surveyed

Signature & Seal of  
Professional Surveyor

Certificate No.

0 330 660 990 1320 1650 1980 2310 2640 2000 1500 1000 500 0

**DISTRICT I**  
P.O. Box 1980, Hobbs, NM 88241-1980

**DISTRICT II**  
P.O. Drawer DD, Artesia, NM 88211-0719

**DISTRICT III**  
1000 Rio Brazos Rd, Aztec, NM 87410

State of New Mexico  
Energy, Minerals and Natural Resources Department

**OIL CONSERVATION DIVISION**

P.O. Box 2088  
Santa Fe, New Mexico 87504-2088

Form C-107  
Revised 4-1-91

Filing Instructions  
Bottom of Page

**APPLICATION FOR MULTIPLE COMPLETION**

Oryx Energy Company

P. O. Box 1861, Midland, Texas 79702

Operator	Address
Elliott "B" 15 No. 4,	A, 510' FNL & 660' FEL, Lea
Lease	Well No. Unit Ltr. - Sec - Twp - Rge County

All applicants for multiple completion must complete Items 1 and 2 below.

1. The following facts are submitted:	Upper Zone	Intermediate Zone	Lower Zone
a. Name of Pool and Formation	Blinebry		Tubb
b. Top and Bottom of Pay Section (Perforations)	5425 5535		6002 6132
c. Type of production (Oil or Gas)	Gas		Gas
d. Method of Production (Flowing or Artificial Lift)	Flowing		Flowing
e. Daily Production <input checked="" type="checkbox"/> Actual Blinebry <input checked="" type="checkbox"/> Estimated Tubb Oil Bbls. Gas MCF Water Bbls.	128 MCFPD		400 MCFPD

2. The following must be attached:
- Diagrammatic Sketch of the Multiple Completion, showing all casing strings, including diameters and setting depths, centralizers and/or turbolizers and location thereof, quantities used and top of cement, perforated intervals, tubing strings, including diameters and setting depth, location and type of packers and side door chokes, and such other information as may be pertinent.
  - Plat showing the location of all wells on applicant's lease, all offset wells on offset leases, and the names and addresses of operators of all leases offsetting applicant's lease.
  - Electrical log of the well or other acceptable log with tops and bottoms of producing zones and intervals of perforation indicated thereon. (If such log is not available at the time application is filed it shall be submitted as provided by Rule 112-A.)

**OPERATOR:**

I hereby certify above information is true and complete to best of my knowledge, and belief.

Signature

*Martin L. Perez*

Printed Name & Title

Proration Analyst

Date 6-7-91

Telephone 915/ 688-0375

**OIL CONSERVATION DIVISION**

Approved by: \_\_\_\_\_

Title: \_\_\_\_\_

Date: \_\_\_\_\_

NOTE: If the proposed multiple completion will result in an unorthodox well location and/or a non-standard proration unit in one or more of the producing zones, then separate application for approval of the same should be filed simultaneously with this application.

**FILING INSTRUCTIONS:**

- District Approval** -- See rule 112-A-B -- Submit 4 copies of Form C-107 with attachments to appropriate district office.
- Division Director Administrative Approval** -- See Rule 112-C -- Submit 2 copies of Form C-107 with attachments to Division office in Santa Fe and 2 copies of Form C-107 with attachments to appropriate district office.

## WELL COMPLETION SKETCHES SUN-5036-4-A

WELL Elliott B 15 #4 FIELD Tubb DATE 4-17-91

☐ PRESENT COMPLETION

☒ SUGGESTED COMPLETION

## PERMANENT WELL BORE DATA

## DATA ON THIS COMPLETION

KB: 3398'

GL: 3388'

10 3/4", 33# CS 194'

Cmt'd w/ 135 SX, Circ

7 5/8", 26# CS 2760'

Cmt'd w/ 1500 SX, Circ

5 1/2", 17# CS 6429'

Cmt'd w/ 105 SX, TOC

5380' (Temp). Perf 4

Holes @ 5375' Sgzd

w/ 375 SX. TOC

2725' (Temp)

2 3/8", 4.7# Tg

5 1/2" Lok-Set PKR

@ 5920'

Perf Blinby 5425-50',

60-85', 5505-35', 4 SPF

Perf Tubb 6002-40',

6080-6116', 6122-32'

CI BP @ 6200' w/ 35' Cmt

Perf Drinkard 6264-6366',

19 Holes

CI BP @ 6420' w/ 1 SX

Cmt on Top

Drinkard OH 6429-84'

Wetox  
Elmt 8 15 #4  
GR/N/CCL  
10-1-69

COLLARS  
14' Deep

TOP TUBS  
5976(2.18)

RECOMMENDED TUBS  
PERFS

RECOMMENDED TUBS  
PERFS

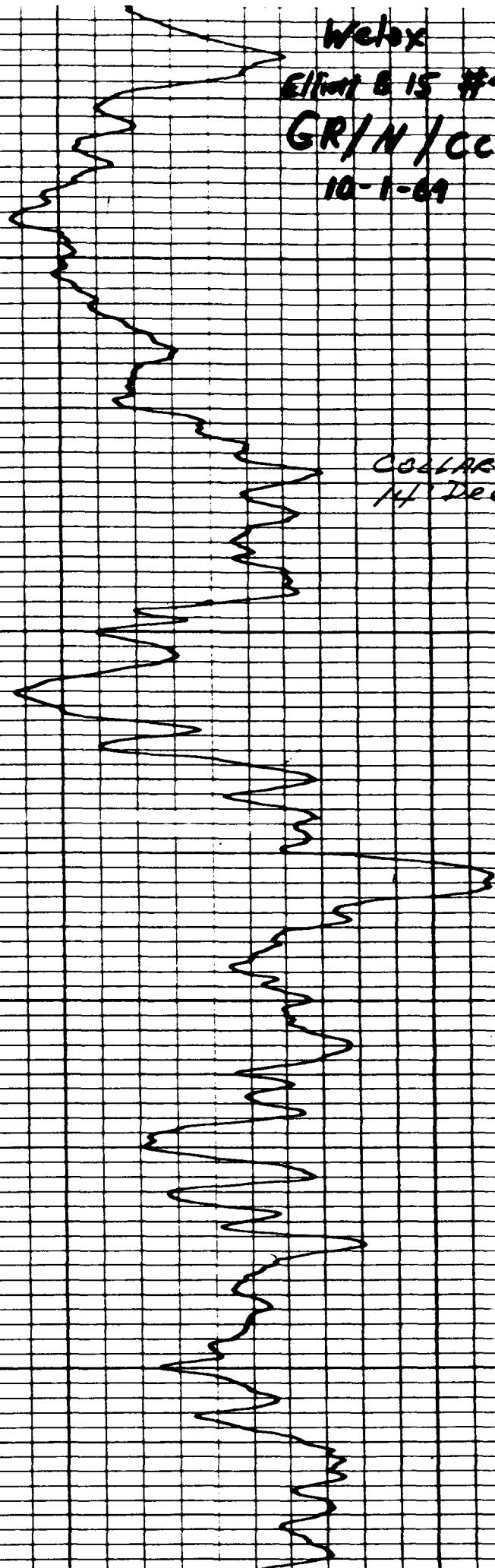


6000

6050

6100

6150

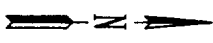
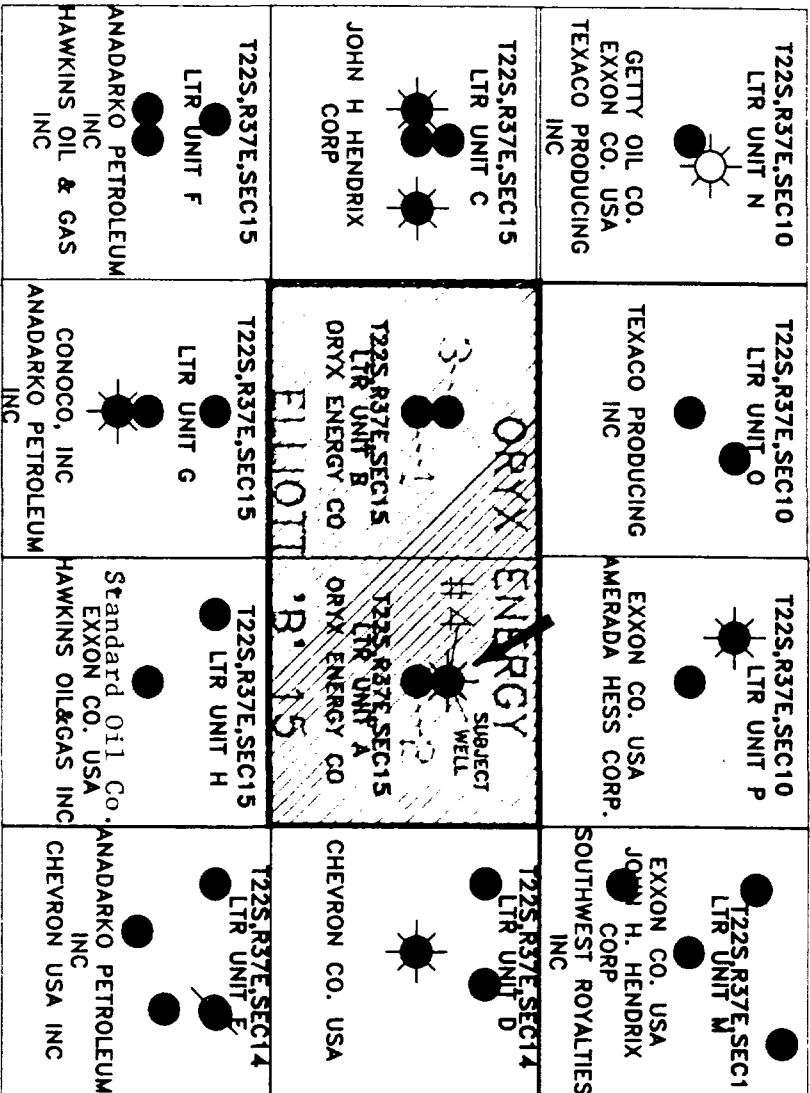


OFFSET OPERATORS

Elliott "B" 15 No. 4

A, Sec. 15, T-22-S, R-37-E  
Lea County, New Mexico

1. Amerado Hess Corp.  
P. O. Box 2040  
Tulsa, OK 74102
2. Anadarko Petroleum Corp.  
P. O. Box 1330  
Houston, TX 77251
3. Chevron Co., U.S.A.  
P. O. Box 1635  
Houston, TX 77251
4. Conoco, Inc.  
P. O. Box 2197, PR 2040  
Houston, TX 77252
5. Exxon Company, USA  
P. O. Box 2180  
Houston, TX 77001
6. Getty Oil Co.  
P. O. Box 3109  
Midland, TX 79702
7. Hawkins Oil & Gas, Inc.  
P. O. Box 1282  
Liberal, KS 67905
8. John H. Hendrix Corp.  
223 W. Wall, Ste. 525  
Midland, TX 79701
9. Southwest Royalties, Inc.  
P. O. Drawer 11390  
Midland, TX 79702
10. The Standard Oil Company  
200 Public Square  
Cleveland, OH 44114 - 2375
11. Texaco Producing, Inc.  
P. O. Box 3109  
Midland, TX 79702



0 mi  
0.25 mi

<b>DRYX Energy Company</b> ELLIOTT "B" 15 LEASE AREA T22-S, R37-E LEA COUNTY, NEW MEXICO	
OFFSET OPERATOR DATA 1. OPERATOR 07/01 2. OPERATOR 07/01 3. OPERATOR 07/01	
SOUTHWEST ROYALTIES INC.	

FEBRUARY 1991 SOUTHEAST GAS PRODUCTION SCHEDULE

PAGE 3

BLINERY (PRO GAS) (CONSOLIDATED)

DESCRIPTION	STAT	AF	DEC	U/P	DEC	ALLO	AGE
2K342337E	M	.75	5			5	120
312422337E	M	.50	1628			1628	80
PIPELINE TOTAL		1.25	1633			1633	200

NORTHERN NATURAL GAS COMPANY

AMERADA DIV. AMERADA HESS CORP.

10H2222337E(MMU)			109			109	160
5B2222337E(MMU)	M	1.00	109			109	160
P. U. SUMMARY							
AMERADA HESS CORPORATION							
AB PACIFIC 37E	M	.50	5817			5817	80
4 CORATON BLINERY GAS CO	M	1.00	3442			3442	160
9G 422337E	M		154			154	160
STATE DA	M	1.00					160
41621537E	M						160
E H MALDEN	M						160
2K1522337E(MMU)							
P. U. SUMMARY							

AMERICAN EXPANSION CO.

10H2222337E(MMU)			109			109	160
5B2222337E(MMU)	M	1.00	109			109	160
P. U. SUMMARY							

AMOCO PRODUCTION CO

4N3421537E	M	1.00	15138			15138	160
STATE CK	M		5060			5060	80
3N1921537E	M	.50					80
ARCO OIL & GAS COMPANY							
J R CON	M	.50					80
1N2621537E	M						80

CHEVRON U.S.A. INC.

4G102337E	M	.50	12073			12073	80
4G102337E	M	.75	14538			14538	120
9P2821537E	N		2927			2927	40
EUNICE KING	M	.25					40
24E2821537E(MMU)							
P. U. SUMMARY							
GUTMAN	M	.25					40
1N1922538E	M						40
MARK OMEN	M						40
313421537E(MMU)							
313421537E(MMU)							
P. U. SUMMARY							
ALICE	M	1.00	24837			24837	160
1D 122337E	M	.50					80

GRAHAM ROYALTY LTD

J G RANDLE	M	.50	1948			1948	80
1G2021537E	M	.25	249			249	40
L G MARLICK A	M	.25					40
L 241921537E	M						40
L G MARLICK A BLINERY	M	.25					40
111921537E	M						40

JOHN H. HENDRIX CORP

BRUNSON 32337E(MMU)							
7D 32337E(MMU)							
P. U. SUMMARY							
COSSA TOTA	M	1.00	2214			2214	80
1D1222537E	M	.50	9504			9504	80
GULF HILL	M	.25	786			786	40
1R 421537E	M						40
HILTON	M	.50					80
3N1722537E	M						80
ELLINGTON	M	1.00	53812			53812	160
1E1122537E	M	1.00	828			828	160
1E1122537E	M	1.00	1813			1813	160

WALTON OIL COMPANY

3C1522537E	M	1.00	1813			1813	160
------------	---	------	------	--	--	------	-----

FEBRUARY 1991 SOUTHEAST GAS PRODUCTION SCHEDULE

PAGE 4

BLINERY (PRO GAS) (CONSOLIDATED)

DESCRIPTION	STAT	AF	DEC	U/P	DEC	ALLO	AGE
MARK OMEN	N	1.00	21915			21915	160
2N3421537E	N	1.00	22532			22532	160
LOU HILL	N	1.00	22532			22532	160
12H1122537E	N						160

MOBIL PRODUCING TEXAS AND NEW MEXICO

BRUNSON ARGO	M	.50	1298			1298	80
18 922337E	M	1.00	3873			3873	160
6E1022537E	M	.50	3126			3126	80
13A 922337E	M		2650			2650	78
CARSON WATSON CGM	M	.49	2650			2650	78
E O CARSON	M	1.00	3494			3494	160
14C 3321537E	M	.75	8113			8113	120
1872821537E	M		1837			1837	160
CON 7 6321537E	M	1.00					160
S E LONG	M						160
501122537E(MMU)							
8J1122537E(MMU)							
P. U. SUMMARY							
MARSHALL COM	N	1.00	13250			13250	80
303421537E(MMU)			24105			24105	160
2F3421537E(MMU)			37355			37355	160
P. U. SUMMARY							
DRY ENERGY CO.							
ELLINGTON 15	M	1.00	947			947	160
4A1522537E	M						160

DRY USA INC.

BRUNSON 8	M	.50	8648			8648	160
2K 322337E(MMU)							
6N 322337E(MMU)							
P. U. SUMMARY							
OMEN	M	1.00	8648			8648	160
203521537E	M	.50	288			288	80
STATE	M	.75					120
1F322338E	M						120
PIPELINE TOTAL		29.49	277699			168312-	233955

NORTHERN NATURAL GAS AND TEXACO

MARATHON OIL COMPANY							
WALTER LYNCH	M	1.00					160
4D 122337E	M						160
LOU HILL	N	1.00	29562			29562	160
9E1122537E	N						160
PIPELINE TOTAL		2.00	29562			17341-	19383

NORTHERN NATURAL GAS & WARREN PETROLEUM CO

AMOCO PRODUCTION CO							
STATE CK 13	M	.75	5733			5733	120
5E3621537E	M						120

CHEVRON U.S.A. INC.

O T BOYO	M	1.00					160
3K232337E	M						160
J N CARSON NCT A	M	1.00	17700			17700	160
2K232337E(MMU)							160
P. U. SUMMARY							
EAVER	N	1.00	17700			17700	160
5A1022537E	N	.25	12124			12124	40
PIPELINE TOTAL		3.00	35557			33233 *	486

NORTHERN NATURAL, WARREN AND SHELL PIPELINE

CHEVRON U.S.A. INC.							
WALTON OIL COMPANY	M	.75	2053			2053	120
9P3221537E	M						120
PIPELINE TOTAL		.75	2053			2053	120
NO PIPELINE RECORD FOUND	21		2053			2053	120
PNG							
PHILLIPS 66 NATURAL GAS CO.							



STATE OF NEW MEXICO  
ENERGY, MINERALS AND NATURAL RESOURCES DEPARTMENT

91 JUN 14 AM 10 38

OIL CONSERVATION DIVISION  
HOBBS DISTRICT OFFICE

6-12-91

BRUCE KING  
GOVERNOR

POST OFFICE BOX 1980  
HOBBS, NEW MEXICO 88241-1980  
(505) 393-6161

OIL CONSERVATION DIVISION  
P. O. BOX 2088  
SANTA FE, NEW MEXICO 87501

RE: Proposed:

MC \_\_\_\_\_  
DHC \_\_\_\_\_  
NSL ☒ \_\_\_\_\_  
NSP ☒ \_\_\_\_\_  
SWD \_\_\_\_\_  
WFX \_\_\_\_\_  
PMX \_\_\_\_\_

Gentlemen:

I have examined the application for the:

Oryx Energy Co. Elliott B 15 #4-A 15-22-37  
Operator Lease & Well No. Unit S-T-R

and my recommendations are as follows:

OK  
\_\_\_\_\_  
\_\_\_\_\_  
\_\_\_\_\_

Yours very truly,

Jerry Sexton  
Jerry Sexton  
Supervisor, District 1

/ed



STATE OF NEW MEXICO

ENERGY, MINERALS AND NATURAL RESOURCES DEPARTMENT

OIL CONSERVATION DIVISION



BRUCE KING  
GOVERNOR

June 25, 1991

POST OFFICE BOX 2088  
STATE LAND OFFICE BUILDING  
SANTA FE, NEW MEXICO 87504  
(505) 827-5800

Oryx Energy Company  
P.O. Box 1861  
Midland, TX 79701

*Case 10357*

Attention: Maria L. Perez

*RE: Application for dual completion, unorthodox gas well location and non-standard gas proration unit, Elliot "B" 15 Well No. 4, 510' FNL - 660' FEL (Unit A) Section 15, Township 22 South, Range 37 East, NMPM, Tubb Oil and Gas Pool, Lea County, New Mexico.*

Dear Ms. Perez:

The subject application was received in this office on June 14, 1991. On Friday, June 21, 1991 objections were received to your request from John H. Hendrix Corporation, Michael L. Klein, Ronnie H. Westbrook and Daniel Veirs (see copies attached).

Since these objections were filed within the allotted time frame permitted under Rules 2(a)4 and 2(c) of the Special Rules and Regulations for the Tubb Oil and Gas Pool, as promulgated by Division Order No. R-8170, as amended, your application will be placed on the next available docket for the Examiner Hearing scheduled for July 25, 1991. Please provide adequate notice pursuant to Division General Rules 1207(a)2 and 3.

Should you have any questions, please contact me.

Sincerely,

A handwritten signature in dark ink, appearing to read "Michael E. Stogner", with a long horizontal line extending to the right.

Michael E. Stogner  
Chief Hearing Officer/Engineer

MES/ag

cc: Oil Conservation Division - Hobbs  
US Bureau of Land Management - Carlsbad  
Ernest L. Padilla - Santa Fe  
Charles Gray - Oryx, Dallas

PADILLA & SNYDER

ATTORNEYS AT LAW

200 W. MARCY, SUITE 216

P.O. BOX 2523

SANTA FE, NEW MEXICO 87504-2523

ERNEST L. PADILLA  
MARY JO SNYDER

FAX 988-7592  
AREA CODE 505

(505) 988-7577

June 21, 1991

HAND-DELIVERED

Mr. William J. LeMay, Director  
New Mexico Oil Conservation Division  
State Land Office Building  
Santa Fe, New Mexico 87501

Re: Oryx Application for Tubb  
Non-Standard Proration Unit  
Elliott B-15 No. 4  
Section 15, T22S - R37E  
Lea County, New Mexico

Case 10357

RECEIVED

JUN 21 1991

OIL CONSERVATION DIVISION

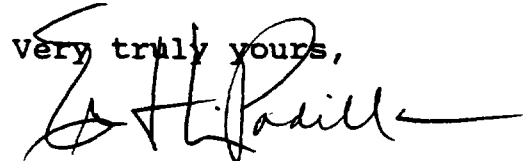
Dear Mr. LeMay:

Please consider this letter as an objection on behalf of John H. Hendrix Corporation, Michael L. Klein, Ronnie H. Westbrook and Daniel Veirs to the above-referenced application for administrative approval.

As grounds for this objection we incorporate, by reference, a copy of a letter dated June 13, 1991 from our clients to Oryx Energy Company, the applicant. This letter explicitly enumerates the basis of the objection.

Should you need additional information, please let us know.

Very truly yours,



Ernest L. Padilla

ELP:pmc

cc: John H. Hendrix Corporation

Oryx Energy Company

480.2

OIL CONSERVATION DIVISION  
RECEIVED  
31 JUN 27 AM 9 11



Oryx Energy Company  
24 Smith Road  
PO Box 1861  
Midland TX 79702-1861  
915 688 0300

Southwestern  
Production Region

June 25, 1991

Oil Conservation Division  
P. O. Box 2088  
310 Old Santa Fe Trail - Room 206  
Santa Fe, New Mexico 87501

Attn: Michael Stogner

*Case 10357*

Re: Non-Standard Gas Proration Unit  
Unorthodox Location  
Oryx Energy Company  
Elliott "B" 15 No. 4  
A, 510' FNL & 660' FEL  
Sec. 15, T-22-S, R-37-E  
Lea County, New Mexico

Dear Mr. Stogner:

Enclosed are the Certified Return Receipts from the offset operators for the captioned application previously submitted on June 7, 1991.

Yours truly,

Maria L. Perez  
Proration Analyst  
A/C 915 688-0375

Enclosures

MLP/ak

● **SENDER:** Complete items 1 and 2 when additional services are desired, and complete items 3 and 4.

**SENDER:** Complete items 1 and 2 when additional services are desired, and complete items 3 and 4.  
Put your address in the "RETURN TO" Space on the reverse side. Failure to do this will prevent this card from being returned to you. The return receipt fee will provide you the name of the person delivered to and the date of delivery. For additional fees the following services are available. Consult postmaster for fees and check box(es) for additional service(s) requested.

1. ☐ Show to whom delivered, date, and addressee's address. (Extra charge) 2. ☐ Restricted Delivery (Extra charge)

3. Article Addressed to:  Amerada Hess Corp. P. O. Box 2040 Tulsa, OK 74102	4. Article Number <b>P 547 381 176</b>  Type of Service: <input type="checkbox"/> Registered <input type="checkbox"/> Insured <input checked="" type="checkbox"/> Certified <input type="checkbox"/> COD <input type="checkbox"/> Express Mail <input type="checkbox"/> Return Receipt for Merchandise  Always obtain signature of addressee or agent and <b>DATE DELIVERED.</b>
5. Signature — Addressee <b>X</b>	8. Addressee's Address (ONLY if requested and fee paid)
6. Signature — Agent <b>X</b> <i>Charles Laurence</i>	
7. Date of Delivery <b>JUN 12 1991</b>	

PS Form 3811, Apr. 1989

★ U.S.G.P.O. 1989-238-815

DOMESTIC RETURN RECEIPT

**SENDER:** Complete items 1 and 2 when additional services are desired, and complete items 3 and 4.  
Put your address in the "RETURN TO" Space on the reverse side. Failure to do this will prevent this card from being returned to you. The return receipt fee will provide you the name of the person delivered to and the date of delivery. For additional fees the following services are available. Consult postmaster for fees and check box(es) for additional service(s) requested.

1. ☐ Show to whom delivered, date, and addressee's address. (Extra charge) 2. ☐ Restricted Delivery (Extra charge)

3. Article Addressed to:  Chevron Co. U.S.A. P. O. Box 1635 Houston, TX 77251	4. Article Number <b>P 547 381 178</b>  Type of Service: <input type="checkbox"/> Registered <input type="checkbox"/> Insured <input checked="" type="checkbox"/> Certified <input type="checkbox"/> COD <input type="checkbox"/> Express Mail <input type="checkbox"/> Return Receipt for Merchandise  Always obtain signature of addressee or agent and <b>DATE DELIVERED.</b>
5. Signature — Addressee <b>X</b>	8. Addressee's Address (ONLY if requested and fee paid)
6. Signature — Agent <b>X</b> <i>C. J. [illegible]</i>	
7. Date of Delivery <b>JUN 13 1991</b>	

PS Form 3811, Apr. 1989

★ U.S.G.P.O. 1989-238-815

DOMESTIC RETURN RECEIPT

**SENDER:** Complete items 1 and 2 when additional services are desired, and complete items 3 and 4.  
Put your address in the "RETURN TO" Space on the reverse side. Failure to do this will prevent this card from being returned to you. The return receipt fee will provide you the name of the person delivered to and the date of delivery. For additional fees the following services are available. Consult postmaster for fees and check box(es) for additional service(s) requested.

1. ☐ Show to whom delivered, date, and addressee's address. (Extra charge) 2. ☐ Restricted Delivery (Extra charge)

3. Article Addressed to:  Conoco, Inc. P. O. Box 2197, PR 2040 Houston, TX 77252	4. Article Number <b>P 547 381 179</b>  Type of Service: <input type="checkbox"/> Registered <input type="checkbox"/> Insured <input checked="" type="checkbox"/> Certified <input type="checkbox"/> COD <input type="checkbox"/> Express Mail <input type="checkbox"/> Return Receipt for Merchandise  Always obtain signature of addressee or agent and <b>DATE DELIVERED.</b>
5. Signature — Addressee <b>X</b>	8. Addressee's Address (ONLY if requested and fee paid)
6. Signature — Agent <b>X</b> <i>M. B. McDonald</i>	
7. Date of Delivery <b>JUN 13 1991</b>	

PS Form 3811, Apr. 1989

★ U.S.G.P.O. 1989-238-815

DOMESTIC RETURN RECEIPT

● **SENDER:** Complete items 1 and 2 when additional services are desired, and complete items 3 and 4.  
Put your address in the "RETURN TO" Space on the reverse side. Failure to do this will prevent this card from being returned to you. The return receipt fee will provide you the name of the person delivered to and the date of delivery. For additional fees the following services are available. Consult postmaster for fees and check box(es) for additional service(s) requested.

1. ☐ Show to whom delivered, date, and addressee's address. (Extra charge) 2. ☐ Restricted Delivery (Extra charge)

3. Article Addressed to:  Exxon Company USA P. O. Box 2180 Houston, TX 77001	4. Article Number <b>P 547 381 180</b> Type of Service: <input type="checkbox"/> Registered <input type="checkbox"/> Insured <input checked="" type="checkbox"/> Certified <input type="checkbox"/> COD <input type="checkbox"/> Express Mail <input type="checkbox"/> Return Receipt for Merchandise Always obtain signature of addressee or agent and <b>DATE DELIVERED.</b>
5. Signature — Addressee <b>X</b>	8. Addressee's Address (ONLY if requested and fee paid)
6. Signature — Agent <b>X</b>	
7. Date of Delivery <b>JUN 13 1991</b>	

PS Form 3811, Apr. 1989

★ U.S.G.P.O. 1989-238-815

**DOMESTIC RETURN RECEIPT**

● **SENDER:** Complete items 1 and 2 when additional services are desired, and complete items 3 and 4.  
Put your address in the "RETURN TO" Space on the reverse side. Failure to do this will prevent this card from being returned to you. The return receipt fee will provide you the name of the person delivered to and the date of delivery. For additional fees the following services are available. Consult postmaster for fees and check box(es) for additional service(s) requested.

1. ☐ Show to whom delivered, date, and addressee's address. (Extra charge) 2. ☐ Restricted Delivery (Extra charge)

3. Article Addressed to:  Getty Oil Co. P. O. Box 3109 Midland, TX 79702	4. Article Number <b>P 547 381 181</b> Type of Service: <input type="checkbox"/> Registered <input type="checkbox"/> Insured <input checked="" type="checkbox"/> Certified <input type="checkbox"/> COD <input type="checkbox"/> Express Mail <input type="checkbox"/> Return Receipt for Merchandise Always obtain signature of addressee or agent and <b>DATE DELIVERED.</b>
5. Signature — Addressee <b>X</b>	8. Addressee's Address (ONLY if requested and fee paid)
6. Signature — Agent <b>X</b>	
7. Date of Delivery <b>JUN 12 1991</b>	

PS Form 3811, Apr. 1989

★ U.S.G.P.O. 1989-238-815

**DOMESTIC RETURN RECEIPT**

● **SENDER:** Complete items 1 and 2 when additional services are desired, and complete items 3 and 4.  
Put your address in the "RETURN TO" Space on the reverse side. Failure to do this will prevent this card from being returned to you. The return receipt fee will provide you the name of the person delivered to and the date of delivery. For additional fees the following services are available. Consult postmaster for fees and check box(es) for additional service(s) requested.

1. ☐ Show to whom delivered, date, and addressee's address. (Extra charge) 2. ☐ Restricted Delivery (Extra charge)

3. Article Addressed to:  Hawkins Oil & Gas, Inc. P. O. Box 1282 Liberal, KS 67905	4. Article Number <b>P 547 381 182</b> Type of Service: <input type="checkbox"/> Registered <input type="checkbox"/> Insured <input checked="" type="checkbox"/> Certified <input type="checkbox"/> COD <input type="checkbox"/> Express Mail <input type="checkbox"/> Return Receipt for Merchandise Always obtain signature of addressee or agent and <b>DATE DELIVERED.</b>
5. Signature — Addressee <b>X</b>	8. Addressee's Address (ONLY if requested and fee paid)
6. Signature — Agent <b>X</b>	
7. Date of Delivery <b>JUN 11 1991</b>	

PS Form 3811, Apr. 1989

★ U.S.G.P.O. 1989-238-815

**DOMESTIC RETURN RECEIPT**

**SENDER:** Complete items 1 and 2 when additional services are desired, and complete items 3 and 4.  
Put your address in the "RETURN TO" Space on the reverse side. Failure to do this will prevent this card from being returned to you. The return receipt fee will provide you the name of the person delivered to and the date of delivery. For additional fees the following services are available. Consult postmaster for fees and check box(es) for additional service(s) requested.

1. ☐ Show to whom delivered, date, and addressee's address. (Extra charge) 2. ☐ Restricted Delivery (Extra charge)

3. Article Addressed to:  John H. Hendrix Corp. 223 W. Wall, Ste. 525 Midland, TX 79701	4. Article Number P 547 381 183  Type of Service: <input type="checkbox"/> Registered <input type="checkbox"/> Insured <input checked="" type="checkbox"/> Certified <input type="checkbox"/> COD <input type="checkbox"/> Express Mail <input type="checkbox"/> Return Receipt for Merchandise  Always obtain signature of addressee or agent and <u>DATE DELIVERED</u> .
5. Signature — Addressee X	8. Addressee's Address (ONLY if requested and fee paid)
6. Signature — Agent X <i>Jan Brown</i>	
7. Date of Delivery <i>6/11/91</i>	

PS Form 3811, Apr. 1989 \*U.S.G.P.O. 1989-238-815 DOMESTIC RETURN RECEIPT

**SENDER:** Complete items 1 and 2 when additional services are desired, and complete items 3 and 4.  
Put your address in the "RETURN TO" Space on the reverse side. Failure to do this will prevent this card from being returned to you. The return receipt fee will provide you the name of the person delivered to and the date of delivery. For additional fees the following services are available. Consult postmaster for fees and check box(es) for additional service(s) requested.

1. ☐ Show to whom delivered, date, and addressee's address. (Extra charge) 2. ☐ Restricted Delivery (Extra charge)

3. Article Addressed to:  Southwest Royalties, Inc. P. O. Drawer 11390 Midland, TX 79702	4. Article Number P 547 381 184  Type of Service: <input type="checkbox"/> Registered <input type="checkbox"/> Insured <input checked="" type="checkbox"/> Certified <input type="checkbox"/> COD <input type="checkbox"/> Express Mail <input type="checkbox"/> Return Receipt for Merchandise  Always obtain signature of addressee or agent and <u>DATE DELIVERED</u> .
5. Signature — Addressee X	8. Addressee's Address (ONLY if requested and fee paid)
6. Signature — Agent X <i>Debra Carter</i>	
7. Date of Delivery <i>6-12-91</i>	

PS Form 3811, Apr. 1989 \*U.S.G.P.O. 1989-238-815 DOMESTIC RETURN RECEIPT

**SENDER:** Complete items 1 and 2 when additional services are desired, and complete items 3 and 4.  
Put your address in the "RETURN TO" Space on the reverse side. Failure to do this will prevent this card from being returned to you. The return receipt fee will provide you the name of the person delivered to and the date of delivery. For additional fees the following services are available. Consult postmaster for fees and check box(es) for additional service(s) requested.

1. ☐ Show to whom delivered, date, and addressee's address. (Extra charge) 2. ☐ Restricted Delivery (Extra charge)

3. Article Addressed to:  The Standard Oil Company 200 Public Square Cleveland, OH 44114 - 2375	4. Article Number P 547 381 185  Type of Service: <input type="checkbox"/> Registered <input type="checkbox"/> Insured <input checked="" type="checkbox"/> Certified <input type="checkbox"/> COD <input type="checkbox"/> Express Mail <input type="checkbox"/> Return Receipt for Merchandise  Always obtain signature of addressee or agent and <u>DATE DELIVERED</u> .
5. Signature — Addressee X	8. Addressee's Address (ONLY if requested and fee paid)
6. Signature — Agent X <i>J. Z...</i>	
7. Date of Delivery <i>JUN 14 1991</i>	

PS Form 3811, Apr. 1989 \*U.S.G.P.O. 1989-238-815 DOMESTIC RETURN RECEIPT

**SENDER:** Complete items 1 and 2 when additional services are desired, and complete items 3 and 4.  
 Put your address in the "RETURN TO" Space on the reverse side. Failure to do this will prevent this card from being returned to you. The return receipt fee will provide you the name of the person delivered to and the date of delivery. For additional fees the following services are available. Consult postmaster for fees and check box(es) for additional service(s) requested.

1. ☐ Show to whom delivered, date, and addressee's address. (Extra charge)      2. ☐ Restricted Delivery (Extra charge)

3. Article Addressed to:  Texaco Producing, Inc. P. O. Box 3100 Midland, TX 79702	4. Article Number P 547 381 186 Type of Service: <input type="checkbox"/> Registered <input type="checkbox"/> Insured <input checked="" type="checkbox"/> Certified <input type="checkbox"/> COD <input type="checkbox"/> Express Mail <input type="checkbox"/> Return Receipt for Merchandise Always obtain signature of addressee or agent and <b>DATE DELIVERED</b> .
5. Signature — Addressee X	8. Addressee's Address (ONLY if required and fee paid)
6. Signature — Agent X <i>Toby Lane</i>	
7. Date of Delivery JUN 12 1991	



6-25-91

# Memo

*From*

EVELYN DOWNS  
*Oil Conservation Staff  
Specialist*

*To Mike Stogner*

*Ony4 C-107 we discussed.*

Oil Conservation Division  
PO Box 1980, Hobbs, New Mexico 88241-1980

**DISTRICT I**  
P.O.Box 1980, Hobbs, NM 88241-1980  
**DISTRICT II**  
P.O. Drawer DD, Artesia, NM 88211-0719  
**DISTRICT III**  
1000 Rio Brazos Rd, Aztec, NM 87410

State of New Mexico  
Energy, Minerals and Natural Resources Department  
**OIL CONSERVATION DIVISION**  
P.O. Box 2088  
Santa Fe, New Mexico 87504-2088

OIL CONSERVATION DIVISION  
RE Form C-107  
Revised 4-1-91  
'91 JUN 28 AM 9 36

Filing Instructions  
Bottom of Page

**APPLICATION FOR MULTIPLE COMPLETION**

Oryx Energy Company

P. O. Box 1861, Midland, Texas 79702

Operator	Address		
Elliott "B" 15 No. 4,	A, 510' FNL & 660' FEL, Lea		
Lease	Well No.	Unit Ltr. - Sec - Twp - Rge	County

All applicants for multiple completion must complete Items 1 and 2 below.

1. The following facts are submitted:	Upper Zone	Intermediate Zone	Lower Zone
a. Name of Pool and Formation	Blinebry		Tubb
b. Top and Bottom of Pay Section (Perforations)	5425 5535		6002 6132
c. Type of production (Oil or Gas)	Gas		Gas
d. Method of Production (Flowing or Artificial Lift)	Flowing		Flowing
e. Daily Production <input checked="" type="checkbox"/> Actual Blinebry <input checked="" type="checkbox"/> Estimated Tubb Oil Bbls. Gas MCF Water Bbls.	128 MCFPD		400 MCFPD

2. The following must be attached:

- Diagrammatic Sketch of the Multiple Completion, showing all casing strings, including diameters and setting depths, centralizers and/or turbolizers and location thereof, quantities used and top of cement, perforated intervals, tubing strings, including diameters and setting depth, location and type of packers and side door chokes, and such other information as may be pertinent.
- Plat showing the location of all wells on applicant's lease, all offset wells on offset leases, and the names and addresses of operators of all leases offsetting applicant's lease.
- Electrical log of the well or other acceptable log with tops and bottoms of producing zones and intervals of perforation indicated thereon. (If such log is not available at the time application is filed it shall be submitted as provided by Rule 112-A.)

**OPERATOR:**

I hereby certify above information is true and complete to best of my knowledge, and belief.

Signature Martin L. Perez  
Printed Name & Title Proration Analyst  
Date 6-7-91 Telephone 915/ 688-0375

**OIL CONSERVATION DIVISION**

Approved by: \_\_\_\_\_  
Title: \_\_\_\_\_  
Date: \_\_\_\_\_

NOTE: If the proposed multiple completion will result in an unorthodox well location and/or a non-standard proration unit in one or more of the producing zones, then separate application for approval of the same should be filed simultaneously with this application.

**FILING INSTRUCTIONS:**

- District Approval -- See rule 112-A-B -- Submit 4 copies of Form C-107 with attachments to appropriate district office.
- Division Director Administrative Approval -- See Rule 112-C -- Submit 2 copies of Form C-107 with attachments to Division office in Santa Fe and 2 copies of Form C-107 with attachments to appropriate district office.
- Multiple completions not qualifying for District or Division Director approval may be set for hearing as outlined in Rule 112-A-E.

## WELL COMPLETION SKETCHES SUN-5036-4-A

WELL Elliott B 15 #4 FIELD Tubb DATE 4-17-91

☐ PRESENT COMPLETION

☒ SUGGESTED COMPLETION

## PERMANENT WELL BORE DATA

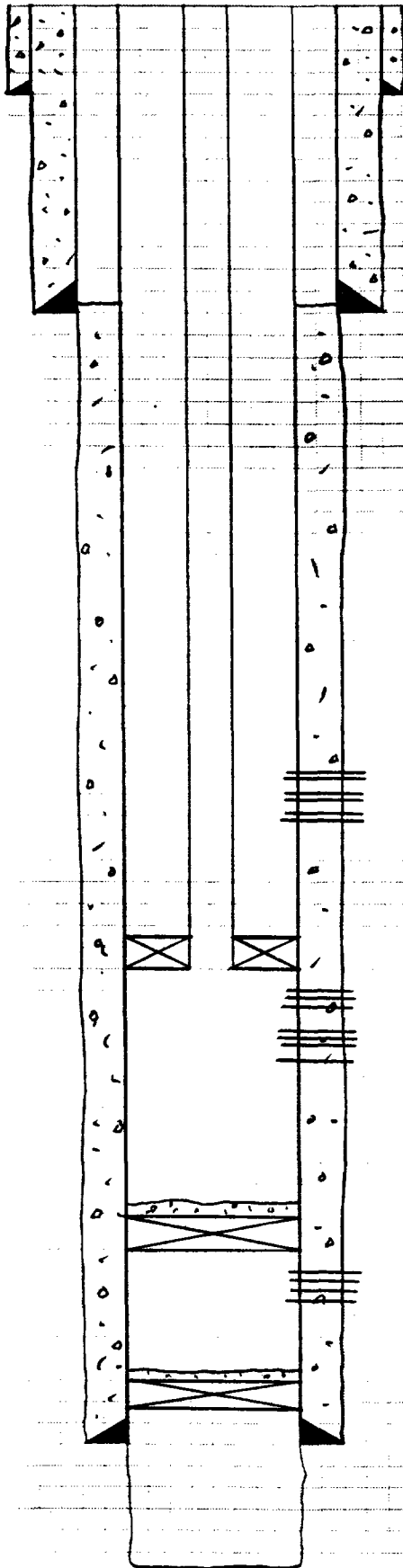
KB: 3398'

GL: 3388'

10<sup>3</sup>/<sub>4</sub>" 33# CS 194'  
Cmt'd w/ 135 SX, Circ

7<sup>5</sup>/<sub>8</sub>" 26# CS 2760'  
Cmt'd w/ 1500 SX, Circ

5<sup>1</sup>/<sub>2</sub>" 17# CS 6429'  
Cmt'd w/ 105 SX, TOC  
5380' (Temp). Perf 4  
Holes @ 5375'. Sg-zd  
w/ 375 SX. TOC  
2725' (Temp)



## DATA ON THIS COMPLETION

2<sup>3</sup>/<sub>8</sub>" 4.7# Tg  
5<sup>1</sup>/<sub>2</sub>" Lock-set PKr  
@ 5920'

Perf Blinbry 5425-50',  
60-85', 5905-35', 4 SPF

Perf Tubb 6002-40',  
6080-6116', 6122-32'

CIBP @ 6200' w/ 35' Cmt

Perf Drinkard 6264-6366',  
19 Holes

CIBP @ 6420' w/ 1 SX  
Cmt on Top

Drinkard OH 6429-84'

TD 6484'

Wetox

ELIM B 15 #4

GR/N/CCL

10-1-69

COLLARS  
14' Deep

TOP TUBS  
5976(-1 18)

RECOMMENDED TUBS  
PERFS

RECOMMENDED TUBS  
PERFS

6000

6050

6100

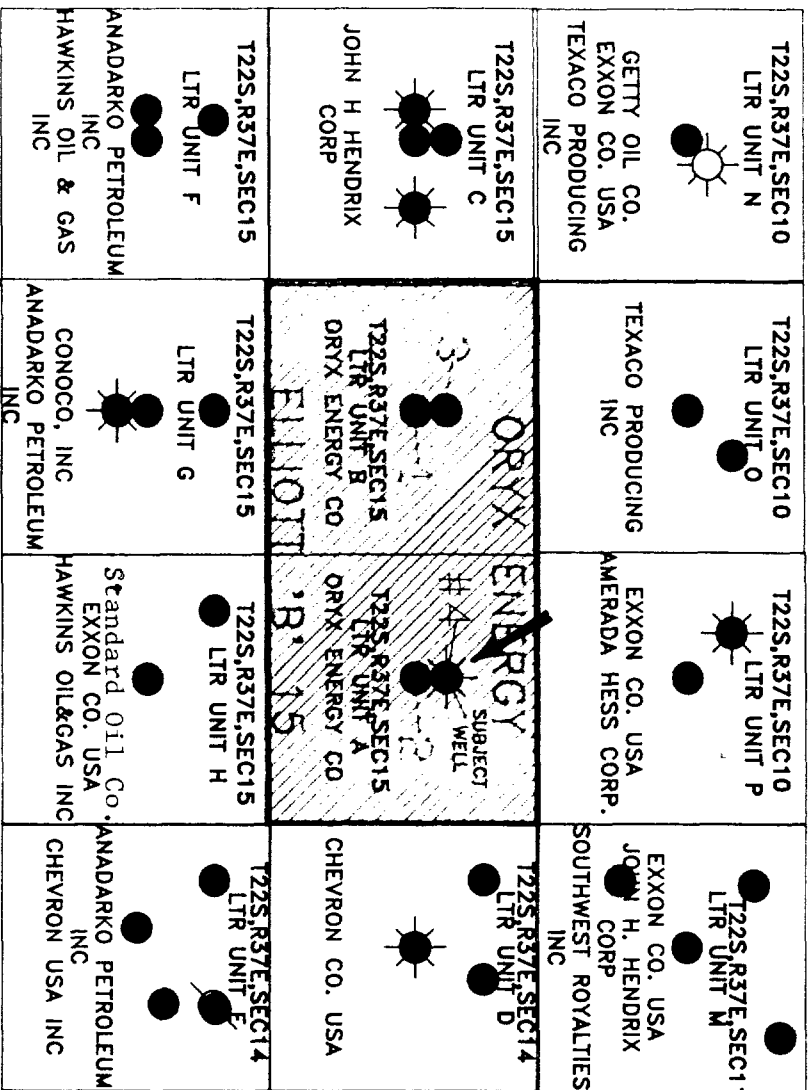
6150

OFFSET OPERATORS

Elliott "B" 15 No. 4

A, Sec. 15, T-22-S, R-37-E  
Lea County, New Mexico

1. Amerado Hess Corp.  
P. O. Box 2040  
Tulsa, OK 74102
2. Anadarko Petroleum Corp.  
P. O. Box 1330  
Houston, TX 77251
3. Chevron Co., U.S.A.  
P. O. Box 1635  
Houston, TX 77251
4. Conoco, Inc.  
P. O. Box 2197, PR 2040  
Houston, TX 77252
5. Exxon Company, USA  
P. O. Box 2180  
Houston, TX 77001
6. Getty Oil Co.  
P. O. Box 3109  
Midland, TX 79702
7. Hawkins Oil & Gas, Inc.  
P. O. Box 1282  
Liberal, KS 67905
8. John H. Hendrix Corp.  
223 W. Wall, Ste. 525  
Midland, TX 79701
9. Southwest Royalties, Inc.  
P. O. Drawer 11390  
Midland, TX 79702
10. The Standard Oil Company  
200 Public Square  
Cleveland, OH 44114 - 2375
11. Texaco Producing, Inc.  
P. O. Box 3109  
Midland, TX 79702



0 mi  
0.25 mi

<p>ORX Energy Company</p>	
<p>ELLIOTT "B" 15 LEASE AREA</p>	
<p>T22-S, R37-E</p>	
<p>LEA COUNTY, NEW MEXICO</p>	
<p>ORX OPERATOR DATA</p>	
1. COMPLETION	6/71
2. COMPLETION	6/71
<p>ORX ASSESSMENT IN 1994</p>	
<p>ELIOTT-DRYX</p>	

**DISTRICT I**  
P.O. Box 1980, Hobbs, NM 88241-1980

**DISTRICT II**  
P.O. Drawer DD, Artesia, NM 88211-0719

**DISTRICT III**  
1000 Rio Brazos Rd, Aztec, NM 87410

State of New Mexico  
Energy, Minerals and Natural Resources Department

**OIL CONSERVATION DIVISION**

P.O. Box 2088  
Santa Fe, New Mexico 87504-2088

Form C-107  
Revised 4-1-91

Filing Instructions  
Bottom of Page

**APPLICATION FOR MULTIPLE COMPLETION**

Oryx Energy Company

P. O. Box 1861, Midland, Texas 79702

Operator	Address
Elliott "B" 15 No. 4,	A, 510' FNL & 660' FEL, Lea
Lease	Well No. Unit Ltr. - Sec - Twp - Rge County

All applicants for multiple completion must complete Items 1 and 2 below.

1. The following facts are submitted:	Upper Zone	Intermediate Zone	Lower Zone
a. Name of Pool and Formation	Blinebry		Tubb
b. Top and Bottom of Pay Section (Perforations)	5425 5535		6002 6132
c. Type of production (Oil or Gas)	Gas		Gas
d. Method of Production (Flowing or Artificial Lift)	Flowing		Flowing
e. Daily Production <input checked="" type="checkbox"/> Actual Blinebry <input checked="" type="checkbox"/> Estimated Tubb Oil Bbls. Gas MCF Water Bbls.	128 MCFPD		400 MCFPD

2. The following must be attached:

- Diagrammatic Sketch of the Multiple Completion, showing all casing strings, including diameters and setting depths, centralizers and/or turbolizers and location thereof, quantities used and top of cement, perforated intervals, tubing strings, including diameters and setting depth, location and type of packers and side door chokes, and such other information as may be pertinent.
- Plat showing the location of all wells on applicant's lease, all offset wells on offset leases, and the names and addresses of operators of all leases offsetting applicant's lease.
- Electrical log of the well or other acceptable log with tops and bottoms of producing zones and intervals of perforation indicated thereon. (If such log is not available at the time application is filed it shall be submitted as provided by Rule 112-A.)

**OPERATOR:**

I hereby certify above information is true and complete to best of my knowledge, and belief.

Signature Martin L. Perez

Printed Name & Title Proration Analyst

Date 6-7-91 Telephone 915/ 688-0375

**OIL CONSERVATION DIVISION**

Approved by: \_\_\_\_\_

Title: \_\_\_\_\_

Date: \_\_\_\_\_

NOTE: If the proposed multiple completion will result in an unorthodox well location and/or a non-standard proration unit in one or more of the producing zones, then separate application for approval of the same should be filed simultaneously with this application.

**FILING INSTRUCTIONS:**

- District Approval** -- See rule 112-A-B -- Submit 4 copies of Form C-107 with attachments to appropriate district office.
- Division Director Administrative Approval** -- See Rule 112-C -- Submit 2 copies of Form C-107 with attachments to Division office in Santa Fe and 2 copies of Form C-107 with attachments to appropriate district office.
- Multiple completions not qualifying for District or Division Director approval may be set for hearing as outlined in Rule 112-A-F.

## WELL COMPLETION SKETCHES SUN-50364-A

WELL

Elliott B 15 #9

FIELD

Tubb

DATE

4-17-91



PRESENT COMPLETION



SUGGESTED COMPLETION

## PERMANENT WELL BORE DATA

## DATA ON THIS COMPLETION

KB: 3398'

GL: 3388'

10<sup>3</sup>/<sub>4</sub>" 33# CS 194'

Cmt'd w/ 135 SX, Circ

7<sup>5</sup>/<sub>8</sub>" 26# CS 2760'

Cmt'd w/ 1500 SX, Circ

5<sup>1</sup>/<sub>2</sub>" 17# CS 6429'

Cmt'd w/ 105 SX, TOC

5380' (Temp). Perf 4

Holes @ 5375' Sg-zd

w/ 375 SX. TOC

2725' (Temp)

2<sup>3</sup>/<sub>8</sub>" 4.7# Tbg5<sup>1</sup>/<sub>2</sub>" LOK-Set PKR

@ 5920'

Perf Blinby 5425-50',  
60-85', 5505-35', 4 SPFPerf Tubb 6002-40',  
6080-6116', 6122-32'

CIBP @ 6200' w/ 35' Cmt

Perf Drinkard 6264-6366',  
19 HolesCIBP @ 6420' w/ 1 SX  
Cmt on Top

Drinkard OH 6429-84'



Wetox

ELIM B 15 #4  
GR/N/CCL  
10-1-69

COLLARS  
14' Deep

TOP TUBS  
5976(2-18)

RECOMMENDED TUBS  
PERFS

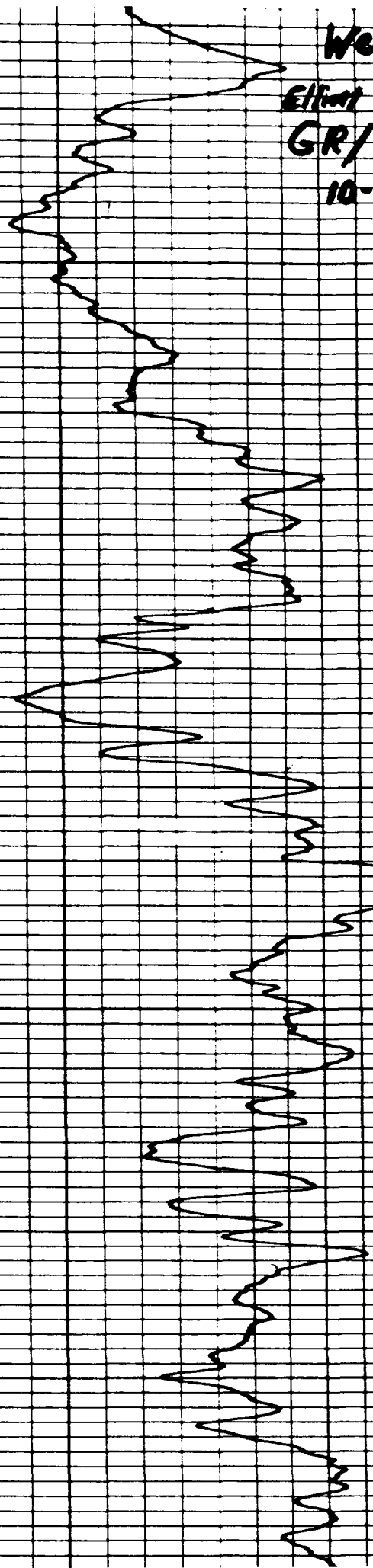
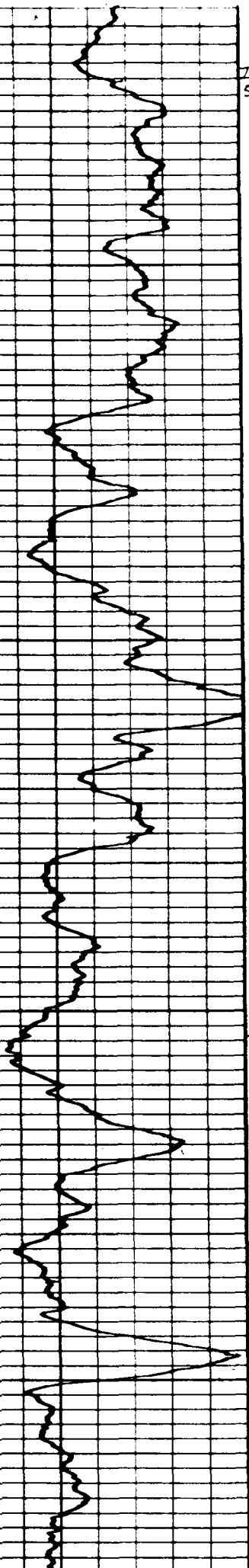
RECOMMENDED TUBS  
PERFS

6000

6050

6100

6150






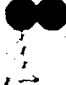








OFFSET OPERATORS

Elliott "B" 15 No. 4


A, Sec. 15, T-22-S, R-37-E  
Lea County, New Mexico

1. Amerado Hess Corp.  
P. O. Box 2040  
Tulsa, OK 74102
2. Anadarko Petroleum Corp.  
P. O. Box 1330  
Houston, TX 77251
3. Chevron Co., U.S.A.  
P. O. Box 1635  
Houston, TX 77251
4. Conoco, Inc.  
P. O. Box 2197, PR 2040  
Houston, TX 77252
5. Exxon Company, USA  
P. O. Box 2180  
Houston, TX 77001
6. Getty Oil Co.  
P. O. Box 3109  
Midland, TX 79702
7. Hawkins Oil & Gas, Inc.  
P. O. Box 1282  
Liberal, KS 67905
8. John H. Hendrix Corp.  
223 W. Wall, Ste. 525  
Midland, TX 79701
9. Southwest Royalties, Inc.  
P. O. Drawer 11390  
Midland, TX 79702
10. The Standard Oil Company  
200 Public Square  
Cleveland, OH 44114 - 2375
11. Texaco Producing, Inc.  
P. O. Box 3109  
Midland, TX 79702

<p>T22S,R37E,SEC10 LTR UNIT N</p>  <p>GETTY OIL CO. EXXON CO. USA TEXACO PRODUCING INC</p>	<p>T22S,R37E,SEC10 LTR UNIT O</p>  <p>TEXACO PRODUCING INC</p>	<p>T22S,R37E,SEC10 LTR UNIT P</p>  <p>EXXON CO. USA AMERADA HESS CORP.</p>	<p>T22S,R37E,SEC11 LTR UNIT M</p>  <p>EXXON CO. USA JOHN H. HENDRIX CORP SOUTHWEST ROYALTIES INC</p>
<p>T22S,R37E,SEC15 LTR UNIT C</p>  <p>JOHN H HENDRIX CORP</p>	<p>T22S,R37E,SEC15 LTR UNIT B</p>  <p>ORXX ENERGY CO</p>	<p>T22S,R37E,SEC15 LTR UNIT A</p>  <p>ORXX ENERGY CO</p>	<p>T22S,R37E,SEC14 LTR UNIT D</p>  <p>CHEVRON CO. USA</p>
<p>T22S,R37E,SEC15 LTR UNIT F</p>  <p>ANADARKO PETROLEUM INC HAWKINS OIL &amp; GAS INC</p>	<p>T22S,R37E,SEC15 LTR UNIT G</p>  <p>CONOCO, INC ANADARKO PETROLEUM INC</p>	<p>T22S,R37E,SEC15 LTR UNIT H</p>  <p>Standard Oil Co. EXXON CO. USA HAWKINS OIL&amp;GAS INC</p>	<p>T22S,R37E,SEC14 LTR UNIT E</p>  <p>ANADARKO PETROLEUM INC CHEVRON USA INC</p>



0 mi  0.25 mi

		Oryx Energy Company	
Elliott 'B' 15 LEASE AREA		T22-S, R37-E	
LEA COUNTY, NEW MEXICO			
ORXX	OPERATOR DATA	DATE	BY
1. OPERATOR	DATE	1. COMPLETION	8/71
2. OPERATOR	DATE	2. COMPLETION	8/71
SOUTHWESTERN		Elliott 'B' 15	

**DISTRICT I**  
P.O.Box 1980, Hobbs, NM 88241-1980

**DISTRICT II**  
P.O. Drawer DD, Artesia, NM 88211-0719

**DISTRICT III**  
1000 Rio Brazos Rd, Aztec, NM 87410

State of New Mexico  
Energy, Minerals and Natural Resources Department

**OIL CONSERVATION DIVISION**  
P.O. Box 2088  
Santa Fe, New Mexico 87504-2088

Form C-107  
Revised 4-1-91

Filing Instructions  
Bottom of Page

**APPLICATION FOR MULTIPLE COMPLETION**

Oryx Energy Company

P. O. Box 1861, Midland, Texas 79702

Operator	Address
Elliott "B" 15 No. 4,	A, 510' FNL & 660' FEL, Lea

Lease	Well No.	Unit Ltr. - Sec - Twp - Rge	County
-------	----------	-----------------------------	--------

All applicants for multiple completion must complete Items 1 and 2 below.

1. The following facts are submitted:	Upper Zone	Intermediate Zone	Lower Zone
a. Name of Pool and Formation	Blinebry		Tubb
b. Top and Bottom of Pay Section (Perforations)	5425 5535		6002 6132
c. Type of production (Oil or Gas)	Gas		Gas
d. Method of Production (Flowing or Artificial Lift)	Flowing		Flowing
e. Daily Production <input checked="" type="checkbox"/> Actual Blinebry <input checked="" type="checkbox"/> Estimated Tubb Oil Bbls. Gas MCF Water Bbls.	128 MCFPD		400 MCFPD

2. The following must be attached:
- Diagrammatic Sketch of the Multiple Completion, showing all casing strings, including diameters and setting depths, centralizers and/or turbolizers and location thereof, quantities used and top of cement, perforated intervals, tubing strings, including diameters and setting depth, location and type of packers and side door chokes, and such other information as may be pertinent.
  - Plat showing the location of all wells on applicant's lease, all offset wells on offset leases, and the names and addresses of operators of all leases offsetting applicant's lease.
  - Electrical log of the well or other acceptable log with tops and bottoms of producing zones and intervals of perforation indicated thereon. (If such log is not available at the time application is filed it shall be submitted as provided by Rule 112-A.)

**OPERATOR:**

I hereby certify above information is true and complete to best of my knowledge, and belief.

Signature Martin L. Perez  
Printed Name & Title Proration Analyst  
Date 6-7-91 Telephone 915/ 688-0375

**OIL CONSERVATION DIVISION**

Approved by: \_\_\_\_\_  
Title: \_\_\_\_\_  
Date: \_\_\_\_\_

NOTE: If the proposed multiple completion will result in an unorthodox well location and/or a non-standard proration unit in one or more of the producing zones, then separate application for approval of the same should be filed simultaneously with this application.

**FILING INSTRUCTIONS:**

- District Approval - See rule 112-A-B -- Submit 4 copies of Form C-107 with attachments to appropriate district office.
- Division Director Administrative Approval - See Rule 112-C -- Submit 2 copies of Form C-107 with attachments to Division office in Santa Fe and 2 copies of Form C-107 with attachments to appropriate district office.
- Multiple completions not qualifying for District or Division Director approval may be set for hearing as outlined in Rule 112-A-E.

## WELL COMPLETION SKETCHES SUN-5036-4-A

WELL

Elliott B 15 #4

FIELD

Tubb

DATE

4-17-91



PRESENT COMPLETION



SUGGESTED COMPLETION

## PERMANENT WELL BORE DATA

KB: 3398'

GL: 3388'

10<sup>3</sup>/<sub>4</sub>" 33# CS 194'

Cmt'd w/ 135 SX, Circ

7<sup>5</sup>/<sub>8</sub>" 26# CS 2760'

Cmt'd w/ 1500 SX, Circ

5<sup>1</sup>/<sub>2</sub>" 17# CS 6429'

Cmt'd w/ 105 SX, TOC

5380' (Temp). Perf 4

Holes @ 5375' Sg-zd

w/ 375 SX. TOC

2725' (Temp)

## DATA ON THIS COMPLETION

2<sup>3</sup>/<sub>8</sub>" 4.7# Tg  
5<sup>1</sup>/<sub>2</sub>" Lock-Set PKR  
@ 5920'Perf Blincoy 5425-50',  
60-85', 5505-35', 4 SPFPerf Tubb 6002-40',  
6080-6116', 6122-32'

CIBP @ 6200' w/ 35' Cmt

Perf Drinkard 6264-6366',  
19 HolesCIBP @ 6420' w/ 1 SX  
Cmt on Top

Drinkard OH 6429-84'

Wetox

ELIM B 15 #4  
GR/N/CCL  
10-1-69

COLLARS  
4' Deep

TOP TUBES  
5976 (2.18)

RECOMMENDED TUBES  
PERFS

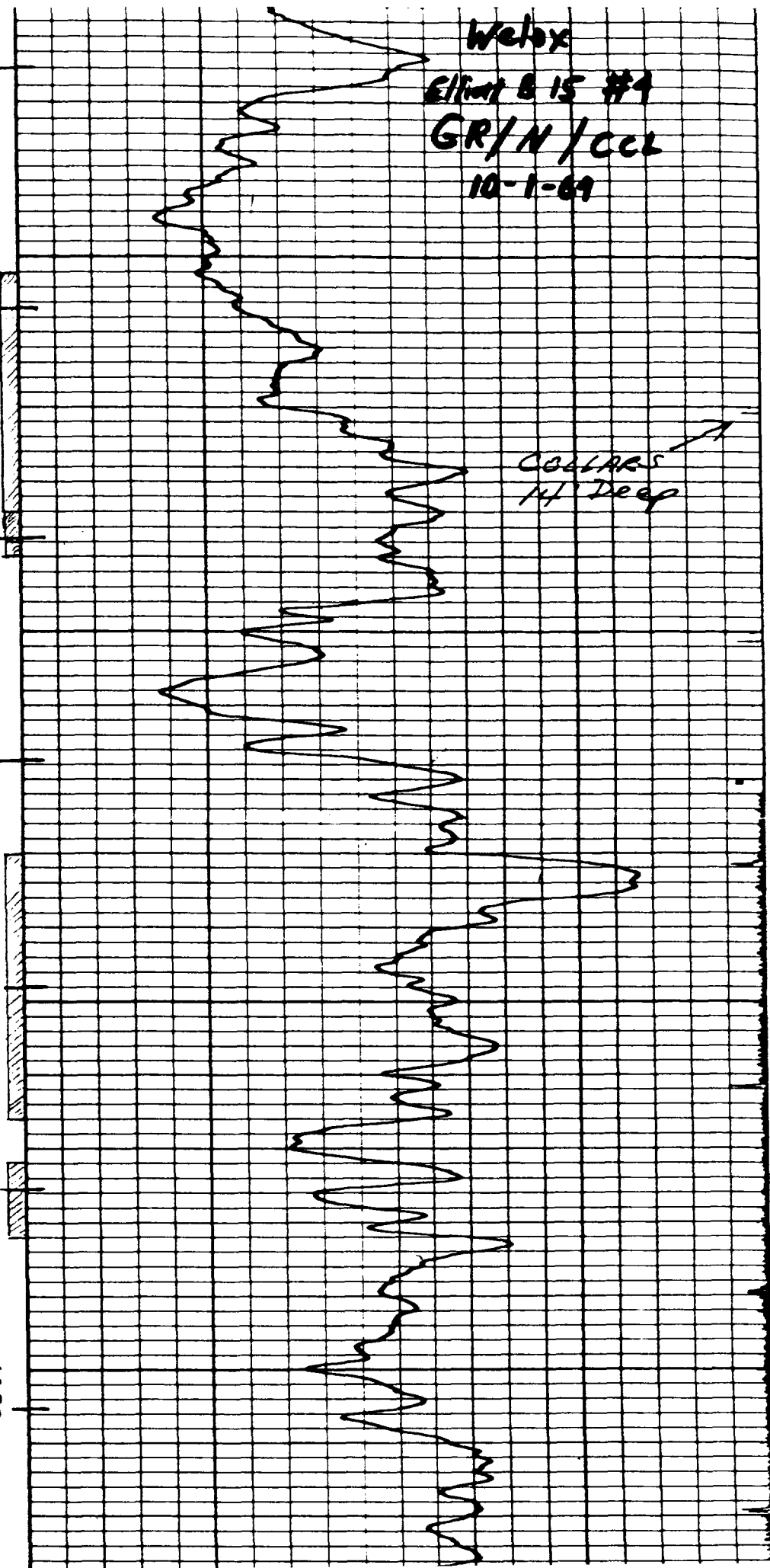
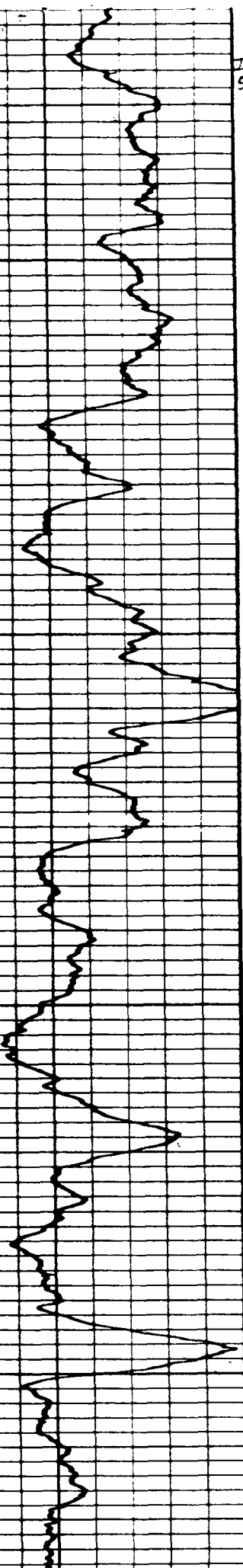
RECOMMENDED TUBES  
PERFS

6000

6050

6100

6150



OFFSET OPERATORS

Elliott "B" 15 No. 4

A, Sec. 15, T-22-S, R-37-E  
Lea County, New Mexico

1. Amerado Hess Corp.  
P. O. Box 2040  
Tulsa, OK 74102
2. Anadarko Petroleum Corp.  
P. O. Box 1330  
Houston, TX 77251
3. Chevron Co., U.S.A.  
P. O. Box 1635  
Houston, TX 77251
4. Conoco, Inc.  
P. O. Box 2197, PR 2040  
Houston, TX 77252
5. Exxon Company, USA  
P. O. Box 2180  
Houston, TX 77001
6. Getty Oil Co.  
P. O. Box 3109  
Midland, TX 79702
7. Hawkins Oil & Gas, Inc.  
P. O. Box 1282  
Liberal, KS 67905
8. John H. Hendrix Corp.  
223 W. Wall, Ste. 525  
Midland, TX 79701
9. Southwest Royalties, Inc.  
P. O. Drawer 11390  
Midland, TX 79702
10. The Standard Oil Company  
200 Public Square  
Cleveland, OH 44114 - 2375
11. Texaco Producing, Inc.  
P. O. Box 3109  
Midland, TX 79702

