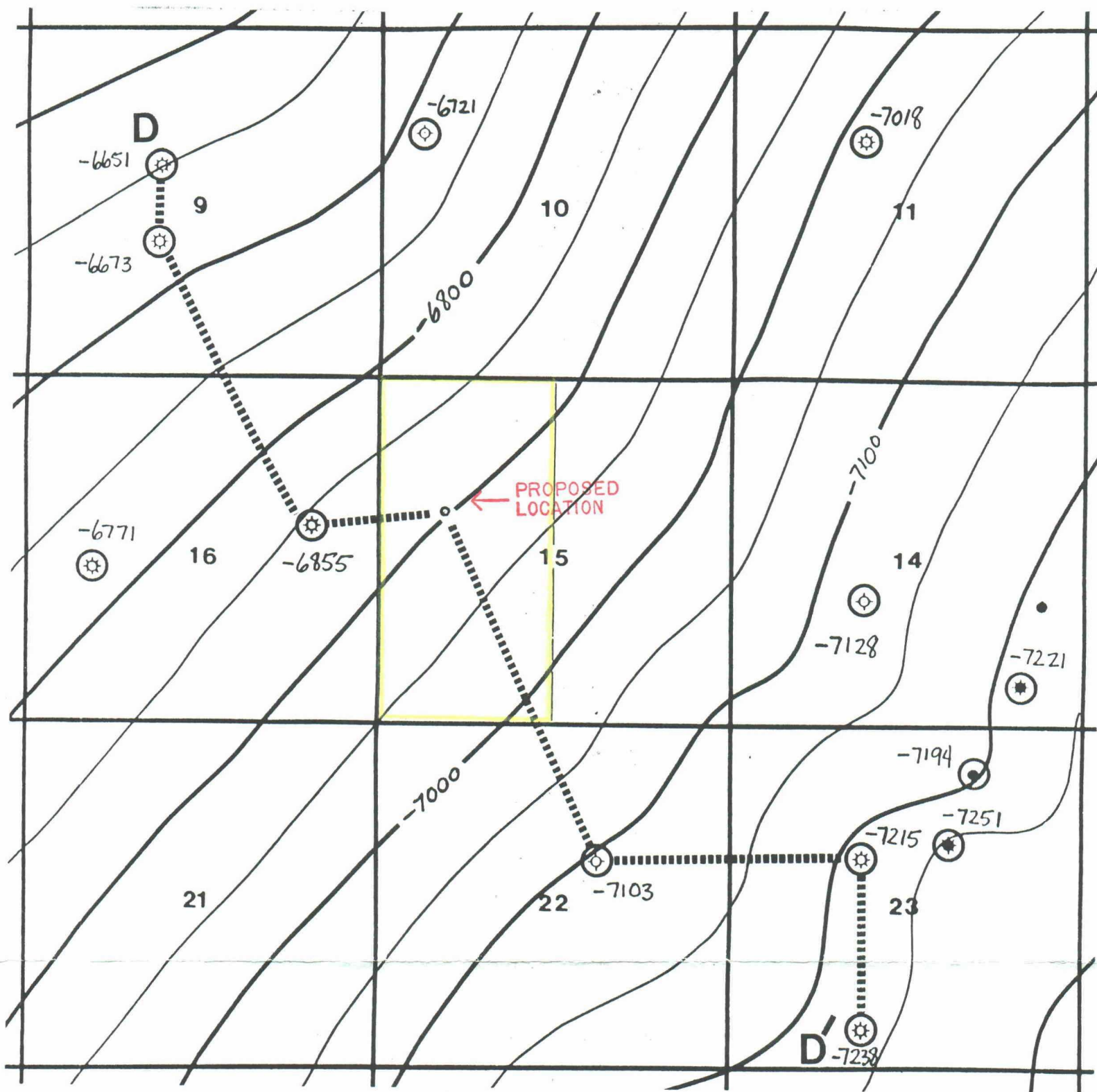


R 28 E

T 18 S



○ MORROW PENETRATIONS

MOC

MEWBOURNE OIL COMPANY

MIDLAND, TEXAS DISTRICT

NORTH TURKEY TRACK PROSPECT
EDDY COUNTY, NEW MEXICO

TOP/LOWER MORROW STRUCTURE

C.I. = 50'

AUGUST 1991

SCALE 1" = 2000'

D. SHATZER

BEFORE EXAMINER STOGNER

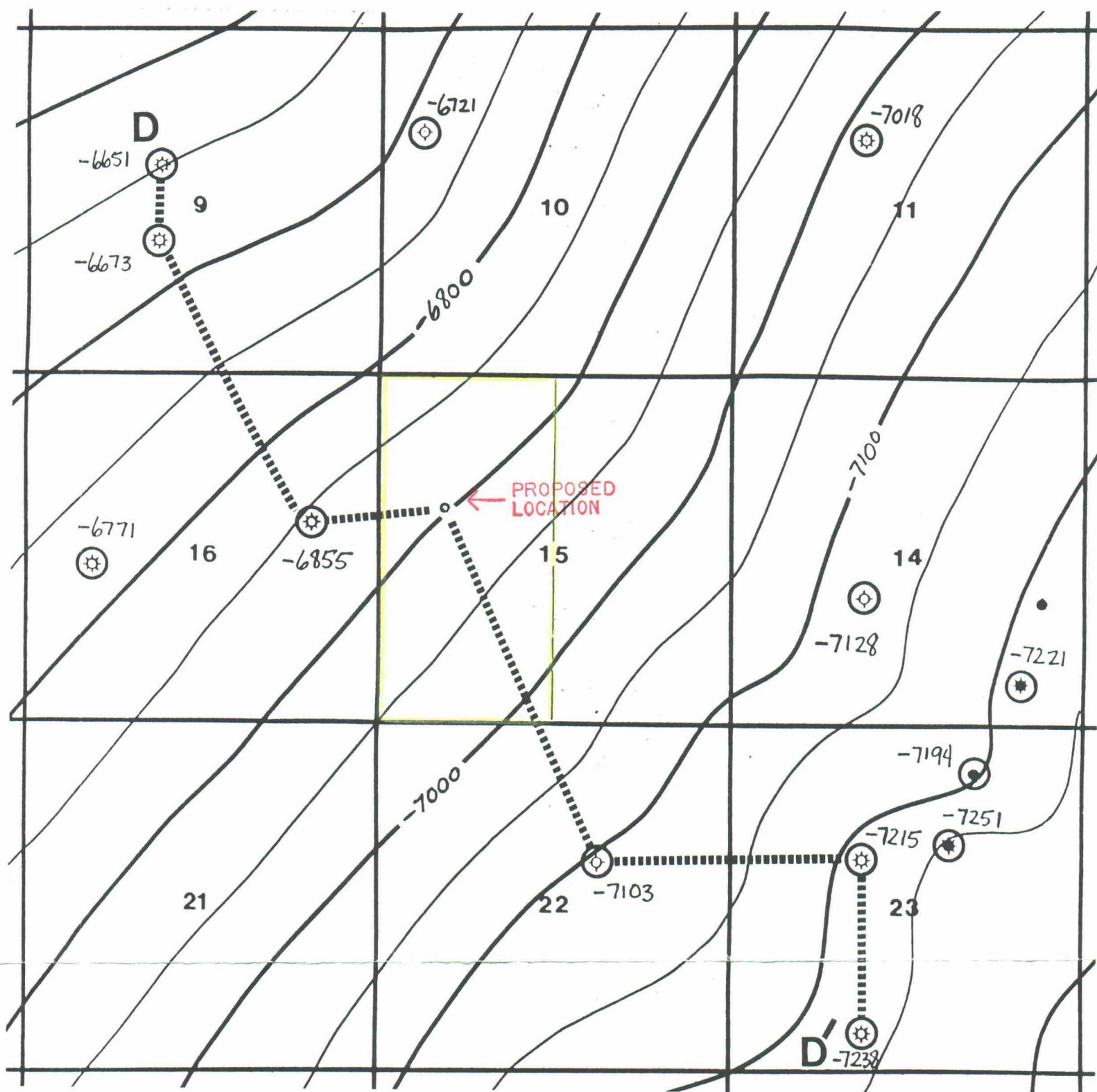
OIL CONSERVATION DIVISION

MEWBOURNE EXHIBIT NO. 8

CASE NO. 10485

R 28 E

T
1
8
S



○ MORROW PENETRATIONS

MOC

MEWBOURNE OIL COMPANY

MIDLAND, TEXAS DISTRICT

NORTH TURKEY TRACK PROSPECT
EDDY COUNTY, NEW MEXICO

TOP/LOWER MORROW STRUCTURE

C.I. = 50'

AUGUST 1991

SCALE 1" = 2000'

D. SHATZER

BEFORE EXAMINER STOGNER

OIL CONSERVATION DIVISION

Mewbourne EXHIBIT NO. 8

CASE NO. 10485