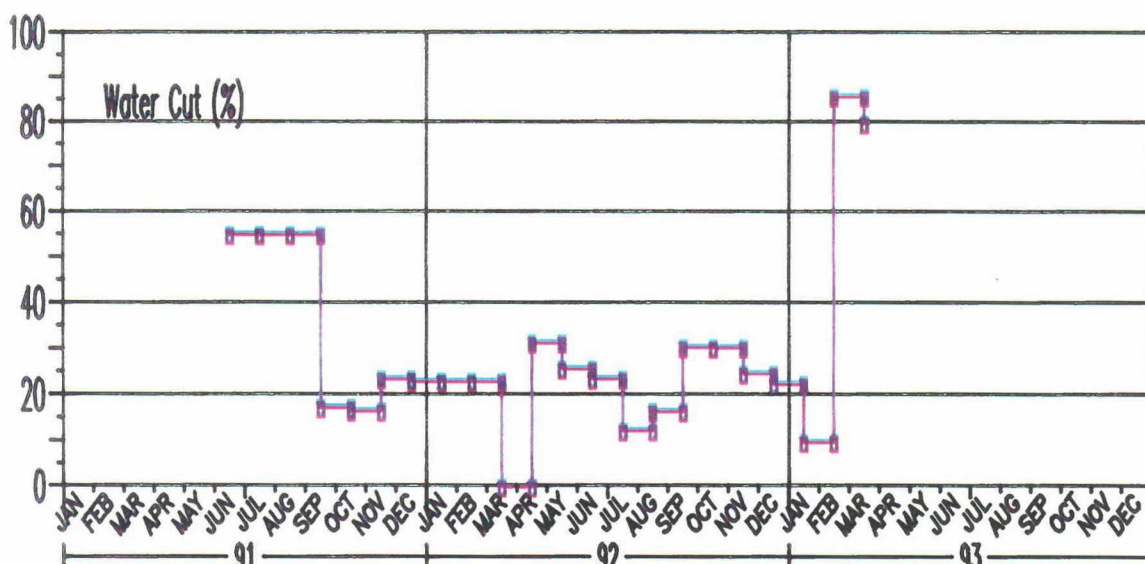
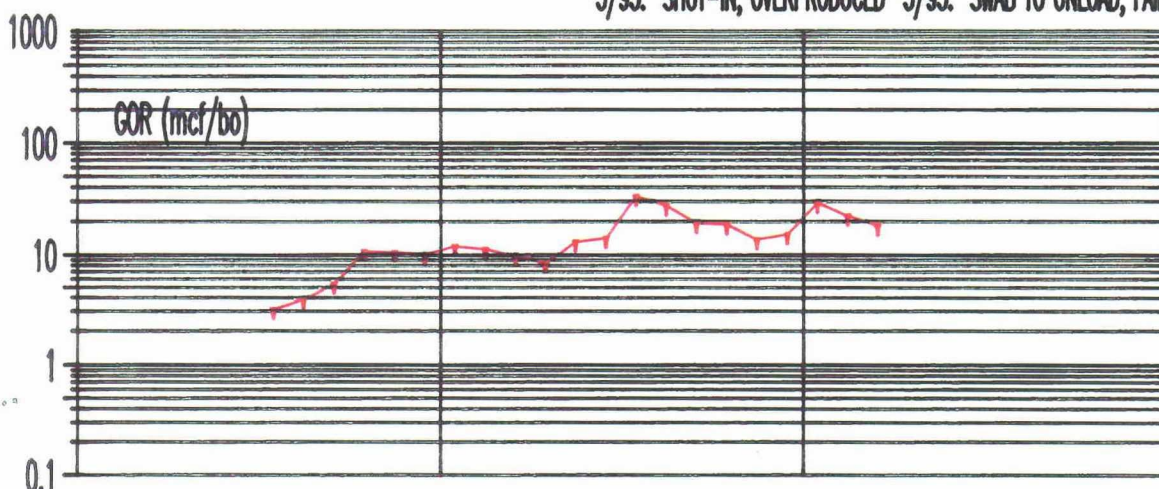
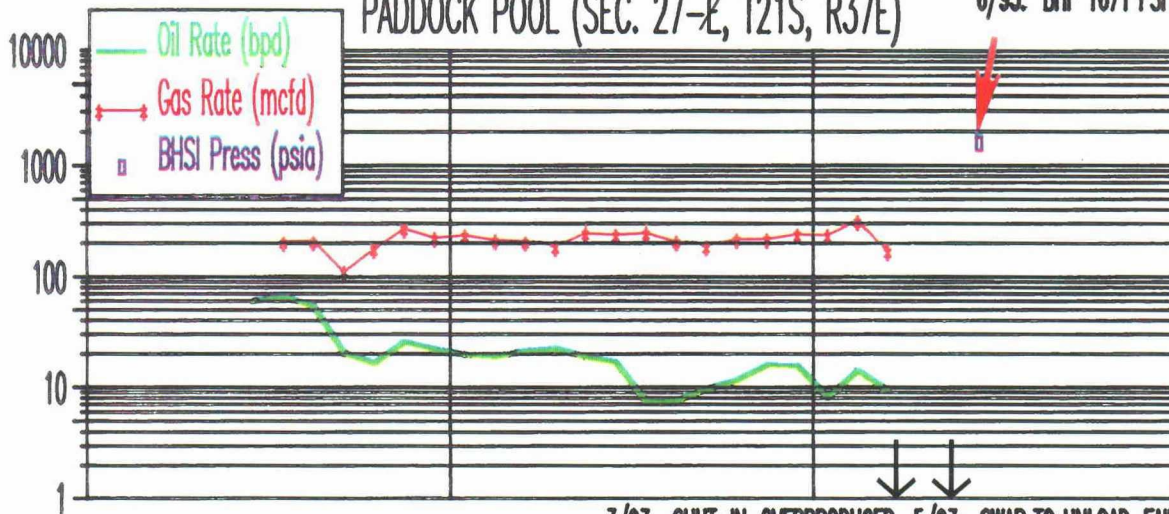


CONOCO INC.

WELL: LOCKHART A 27 2

PADDOCK POOL (SEC. 27-~~E~~^F, T21S, R37E)

6/93: BHP 1671 PSI



NO. 2 PADDOCK HISTORY

JUL 1991 : PERF PADDOCK C 5220'-5266'
IPF 100 BOPD, 306 MCFD, 3060 GOR,
133# FTP, 34/64" CHOKE

FEB 1993 : TREAT W/XYLENE, ACID

MAR 1993 : SHUT-IN FOR OVERPRODUCTION LAST TEST PRIOR TO SHUT-IN
WAS 15 BOPD, 520 MCFD, 34667 GOR, 63 BOPD, 185# FTP, 32/64" CHOKE

MAY 21-28 1993 : SWAB WELL TO UNLOAD, FAILED TO FLOW, SHUT-IN

JUNE 1993 : BHP=1671 PSI

AUG 19-30 1993 : SWAB WELL TO UNLOAD, FAILED TO FLOW.

BEFORE EXAMINER STOGNER
OIL CONSERVATION DIVISION

EXHIBIT NO. **12**
CASE NO.: 10830
Submitted by: Conoco Inc.
Hearing Date: Sept. 23, 1993