

NEW MEXICO
OIL CONSERVATION DIVISION

EXHIBIT 1

CASE NO. 10890

APPLICATION OF SANTA FE ENERGY
OPERATING PARTNERS, L.P. FOR
AN UNORTHODOX OIL WELL LOCATION,
LEA COUNTY, NEW MEXICO.

AFFIDAVIT REGARDING NOTICE

STATE OF NEW MEXICO)
) ss
COUNTY OF SANTA FE)

James Strickler, being duly sworn upon his oath, deposes and states:

1. I am over the age of 18 and have personal knowledge of the matters stated herein.

2. I am a landman for Applicant herein.

3. Applicant has conducted a good faith, diligent effort to find the correct addresses of interest owners entitled to receive notice of the Application herein.

4. Notice of the Application was provided to the interest owners at their correct addresses by mailing them, by certified mail, a copy of the Application. Copies of the notice letters and certified return receipts are attached hereto.

5. The notice provisions of Rule 1207 have been complied with.

James Strickler

SUBSCRIBED AND SWORN TO before me this 6th day of January, 1994, by James Strickler.

Alena Richardson
Notary Public

My commission expires:

Oct 28, 1997

P 237 027 890

Santa Fe Pacific Exp. ion Company
Managing General Partner

CERTIFIED MAIL P 237 027 886

December 13, 1993

Zachary Oil Operating
P.O. Box 80100
Midland, Texas 79709

Attn: Land Dept./Operations Dept.

Re: Kachina 5 Federal #7
Application for an Unorthodox
Well Location
2130' FNL & 990 FWL
S/2 NW/4 Section 5
Township 18 South, Range 33 East
Lea County, New Mexico

Gentlemen:

Enclosed is a copy of an Application for an unorthodox well location filed at the New Mexico Oil Conservation Division by Santa Fe Energy Operating Partners, L.P. regarding the S/2NW/4 of Section 5, Township 18 South, Range 33 East, N.M.P.M., Lea County, New Mexico. Santa Fe's records indicate that you are an operator or lessee offsetting the proposed well unit. This matter has been scheduled for hearing on Thursday, January 6, 1994 at 8:15 a.m. at the Division's offices at 310 Old Santa Fe Trail, Santa Fe, New Mexico. Failure to appear at that time will preclude you from contesting this matter at a later date.

If you plan to enter an appearance in this matter, Division Memorandum 2-90 requests that you file a Pre-Hearing Statement with the Division, and send a copy thereof to the applicant, no later than 4:00 p.m. on Friday December 31, 1993.

SANTA FE ENERGY OPERATING PARTNERS, L.P.
By: Santa Fe Pacific Exploration Company
Managing General Partner

By: James R. I. Strickler
James R. I. Strickler, CPL
Senior Landman

Permian Basin District
550 W Texas, Suite 1330
Midland, Texas 79701
915 687-3551

PS Form 3800, June 1991

[illegible]

**Receipt for
Certified Mail**
No Insurance Coverage Provided
Do not use for International Mail
(See Reverse)

P 237 027 886

Santa Fe Energy Operating Partners, L.P.

Santa Fe Pacific Exploration Company
Managing General Partner

CERTIFIED MAIL P 237 027 887

December 13, 1993

Cross Timbers Operating Company
3000 N. Garfield, Suite 250
Midland, Texas 79705

Attn: Land Dept./Operations Dept.


Re: Kachina 5 Federal #7
Application for an Unorthodox
Well Location
2130' FNL & 990 FWL
S/2 NW/4 Section 5
Township 18 South, Range 33 East
Lea County, New Mexico

Gentlemen:

Enclosed is a copy of an Application for an unorthodox well location filed at the New Mexico Oil Conservation Division by Santa Fe Energy Operating Partners, L.P. regarding the S/2NW/4 of Section 5, Township 18 South, Range 33 East, N.M.P.M., Lea County, New Mexico. Santa Fe's records indicate that you are an operator or lessee offsetting the proposed well unit. This matter has been scheduled for hearing on Thursday, January 6, 1994 at 8:15 a.m. at the Division's offices at 310 Old Santa Fe Trail, Santa Fe, New Mexico. Failure to appear at that time will preclude you from contesting this matter at a later date.

If you plan to enter an appearance in this matter, Division Memorandum 2-90 requests that you file a Pre-Hearing Statement with the Division, and send a copy thereof to the applicant, no later than 4:00 p.m. on Friday December 31, 1993.


SANTA FE ENERGY OPERATING PARTNERS, L.P.
By: Santa Fe Pacific Exploration Company
Managing General Partner

By: 
James R. L. Strickler, CPL
Senior Landman

Permian Basin District
550 W. Texas Suite 1330
Midland Texas 79701
915 687 3551

PS Form 3800, June 1991

Cross Timbers Oper. Co.	
3000 N. Garfield, Suite 250	
Midland, Texas 79705	
Postage	\$
Insurance	
Registration	
Other	
Total	\$


Receipt for
Certified Mail
No Insurance Coverage Provided
Do not use for International Mail
(See Reverse)

P 237 027 887

Santa Fe Pacific Exploration Company
Managing General Partner

B C & D Operating
P.O. Box 5926
Hobbs, New Mexico 88241

Attn: Land Department/ Operations Department

Gentlemen:

If you plan to enter an appearance in this matter, Division Memorandum 2-90 requests that you file a Pre-Hearing Statement with the Division, and send a copy thereof to the applicant, no later than 4:00 p.m. on Friday December 31, 1993.

By: James R. J. Strickler
James R. J. Strickler, CPL
Senior Landman

PS Form 3800, June 1991

[illegible]

**Receipt for
Certified Mail**
No Insurance Coverage Provided
Do not use for International Mail
(See Reverse)

P 237 027 888

P 237 027 885

Santa Fe Pacific Exploration Company
Managing General Partner

December 13, 1993

Attn: Mike Gooden

Gentlemen:


If you plan to enter an appearance in this matter, Division Memorandum 2-90 requests that you file a Pre-Hearing Statement with the Division, and send a copy thereof to the applicant, no later than 4:00 p.m. on Friday December 31, 1993.

SANTA FE ENERGY OPERATING PARTNERS, L.P.
By: Santa Fe Pacific Exploration Company
Managing General Partner

By: James R. J. Strickler
James R. J. Strickler, CPL
Senior Landman

Permian Basin District
550 W Texas Suite 1330
Midland Texas 79701
315 687 3551

PS Form 3800, June 1991

 <p>Receipt for Certified Mail</p> <p>NO INSURANCE COVERAGE PROVIDED DO NOT USE FOR INTERNATIONAL (See Reverse)</p>	
DATE	1991
TO	OXY USA, INC.
ZIP	P.O. Box 50250
CITY, STATE, AND ZIP CODE	Midland, Texas 79710
POSTAGE	\$
RECEIVED BY	
SPECIAL DELIVERY FEE	
REMARKS	
TO HAVE DELIVERY GUARANTEED BY 9:00 A.M. NEXT BUSINESS DAY TO WHATS & DATE DELIVERED	
STATION RECEIVED (According to N.Y. USE, and ADDRESS ONLY)	
TOTAL POSTAGE	\$
Pay to order of \$100	

R 33 E

31

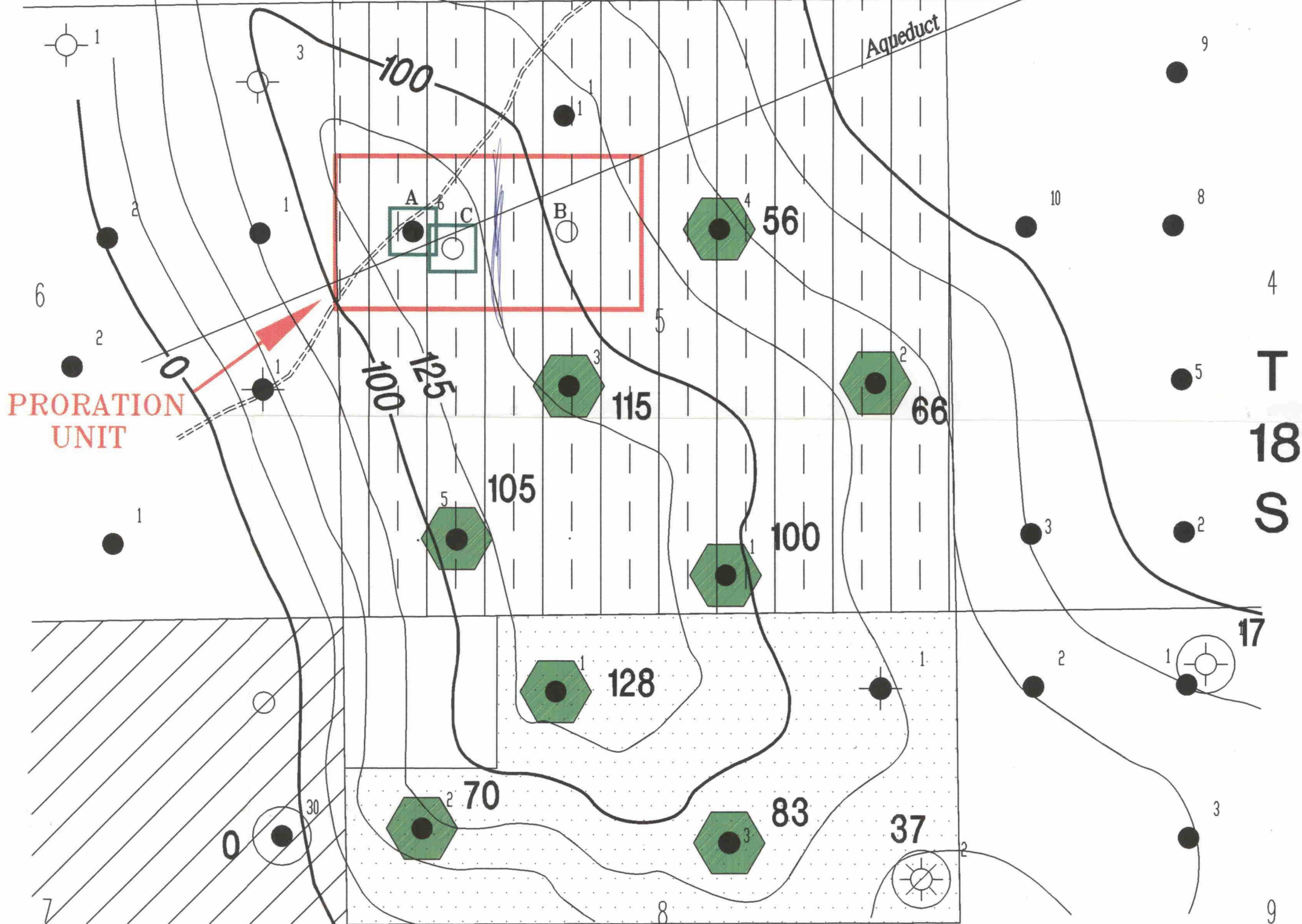
32

33

NEW MEXICO
OIL CONSERVATION DIVISION

San Jose EXHIBIT 3

CASE NO. 10890



WOLFCAMP PRODUCER SOUTH CORBIN
FIELD, 80 ACRE SPACING



POSSIBLE DRILLSITE LOCATION



400' SQUARE DRILLING PAD

- A ORIGINAL PROPOSED ORTHODOX LOCATION OF
KACHINA "5" FED. #7, 1980' FNL & 660' FWL
- B OPTIONAL ORTHODOX LOCATION FOR
KACHINA "5" FED. #7, 1980' FNL & 1980' FWL
- C ACTUAL UNORTHODOX LOCATION OF
KACHINA "5" FED. #7, 2130' FNL & 990' FWL



Santa Fe Energy Operating Partners, LP.
CENTRAL DIVISION
MIDLAND, TEXAS

Lea South Area
SOUTH CORBIN PROSPECT
Lea County, New Mexico

ISOPACH MAP
WOLFCAMP 'AF' CLEAN CARBONATE
GR < 40 API UNITS

Geol. By: G. Davis
Scale: 1"=1000'

C.I.: 25'
Date: 12-28-93

Name: SCORHEAR.DWG

File:2-D-17