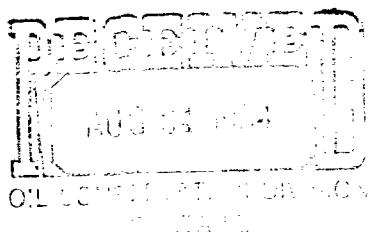


PRODUCING DEPARTMENT



TEXACO
U.S.A.
A DIVISION OF TEXACO INC.
P. O. BOX 3109
MIDLAND, TEXAS 79702

August 16, 1984



M. B. WEIR "B" #11
SKAGGS ABO FIELD
LEA COUNTY, NEW MEXICO

Mr. Perry Pearce
Oil Conservation Commission
P. O. Box 2088
Sante Fe, New Mexico 87501

Gentlemen:

Texaco Inc. requests a hearing be set at your earliest convenience for a Non Standard Proration Unit for the above subject well. The well unit letter is N, and is located 660' from the South line and 2079' from the West line of Section 12, T-20-S, R-37-E, Lea County, New Mexico. OCD Rules require the 160 acre proration units in this field be "substantially in the form of a square which is a quarter section."

The subject lease contains 200 acres which includes 160 acres in the above described Section but these 160 acres are the bottom row of four 1/4 1/4 sections (unit letters M, M, O & P) and therefore comprise a Non Standard Proration Unit.

Enclosed for your convenience is a copy of our C-101 and C-102 which is being submitted this date to the Hobbs OCD District office.

Yours very truly,

R. S. Lane
Assistant Petroleum
Engineering Manager

RES/pw

cc: OCD-Hobbs

NO. OF COPIES RECEIVED	
DISTRIBUTION	
SANTA FE	
FILE	
U.S.G.S.	
LAND OFFICE	
OPERATOR	

5A. Indicate Type of Lease
STATE ☐ REC ☒
5. State Oil & Gas Lease No.

APPLICATION FOR PERMIT TO DRILL, DEEPEN, OR PLUG BACK

1a. Type of Work b. Type of Well OIL WELL <input checked="" type="checkbox"/> GAS WELL <input checked="" type="checkbox"/> OTHER <input type="checkbox"/> SINGLE ZONE <input type="checkbox"/> MULTIPLE ZONE <input checked="" type="checkbox"/>		DRILL <input checked="" type="checkbox"/> DEEPEN <input type="checkbox"/> PLUG BACK <input type="checkbox"/>		7. Unit Agreement Name
2. Name of Operator Texaco Inc.		3. Address of Operator P. O. Box 3109 Midland, Texas 79702		8. Farm or Lease Name M. B. Weir "B"
4. Location of Well UNIT LETTER N LOCATED 660 FEET FROM THE South LINE AND 2079 FEET FROM THE West LINE OF SEC. 12 TWP. 20-S RGE. 37-E NMPM		10. Field and Pool, or Wildcat Skaggs Drinkard, Skaggs Abo & Wildcat		9. Well No. 11
11. Elevations (Show whether D.F., K.F., etc.) 3568' GR		21A. Kind & Status Plug. Bond -		12. County Lea
19. Proposed Depth 9450'		19A. Formation Drinkard, Abo & Wildcat		20. Rotary or C.T. Rotary
21B. Drilling Contractor -		22. Approx. Date Work will start September 1, 1984		

23.

PROPOSED CASING AND CEMENT PROGRAM

SIZE OF HOLE	SIZE OF CASING	WEIGHT PER FOOT	SETTING DEPTH	SACKS OF CEMENT	EST. TOP
26"	20"	94#, H-40	40'	Ready Mix	Circulate
17 1/2"	13 3/8"	54.5#, K-55	1420'	1500	Circulate
12 1/4"	9 5/8"	36#, K-55	4000'	2100	Circulate
8 3/4"	7"	40#, S-80			
		26#, K-55	9450'	1800	Circulate
		23#, K-55			
		26#, N-80			

CEMENT PROGRAM

1. CONDUCTOR CASING: Cement with Ready Mix.
2. SURFACE CASING: 1300 sxs Class "H" w/4% gel, 2% CaCl₂ and 1/4# flocele/sx (14.1 ppg, 1.55 ft³/sx) followed by 200 sxs Class "H" w/2% CaCl₂ (15.6 ppg, 1.18 ft³/sx).
3. INTERMEDIATE CASING: 1st Stage: 1500 sxs HLW w/5# gilsonite & 1/4# flocele/sx (12.4 ppg, 2.00 ft³/sx) followed by 200 sxs Class "H" w/1% CaCl₂ & 1/4# flocele/sx (15.8 ppg, 1.18 ft³/sx). DV Tool @ 1435' (if required due to water flow)
2nd Stage: 200 sxs HLW (12.7 ppg, 1.84 ft³/sx) followed by 200 sxs Class "H" w/2% CaCl₂ (15.6 ppg, 1.18 ft³/sx).

"SEE NEXT PAGE"

IN ABOVE SPACE DESCRIBE PROPOSED PROGRAM; IF PROPOSAL IS TO DEEPEN OR PLUG BACK, GIVE DATA ON PRESENT PRODUCTIVE ZONE AND PROPOSED NEW PRODUCTIVE ZONE. GIVE BLOWOUT PREVENTER PROGRAM, IF ANY.

I hereby certify that the information above is true and complete to the best of my knowledge and belief.

Signed Russell E. Sexton Title Engineer's Assistant

Date 8-6-84

(This space for State Use)

APPROVED BY _____ TITLE _____ DATE _____

CONDITIONS OF APPROVAL, IF ANY:

M. B. WEIR "B" WELL NO. 11
LEA COUNTY, NEW MEXICO

CEMENT PROGRAM CONTINUED:

4. PRODUCTION CASING: 1st Stage: 400 sxs 50-50 pozmix Class "H" w/0.2% HR-4, 5# gilsonite & 1/4# flocele/sx (13.7 ppg, 1.18 ft³/sx) followed by 200 sxs Class "H" w/0.2% HR-4 & 1/4# flocele/sx (15.6 ppg, 1.18 ft³/sx). DV Tool @ 6900'.
- 2nd Stage: 900 sxs HLW w/5# gilsonite & 1/4# flocele/sx (12.4 ppg, 2.00 ft³/sx) followed by 300 sxs Class "H" w/1/4# flocele/sx (15.6 ppg, 1.18 ft³/sx).

**NEW MEXICO OIL CONSERVATION COMMISSION
WELL LOCATION AND ACREAGE DEDICATION PLAT**

Form C-102
Supersedes C-128
Effective 1-1-65

All distances must be from the outer boundaries of the Section.

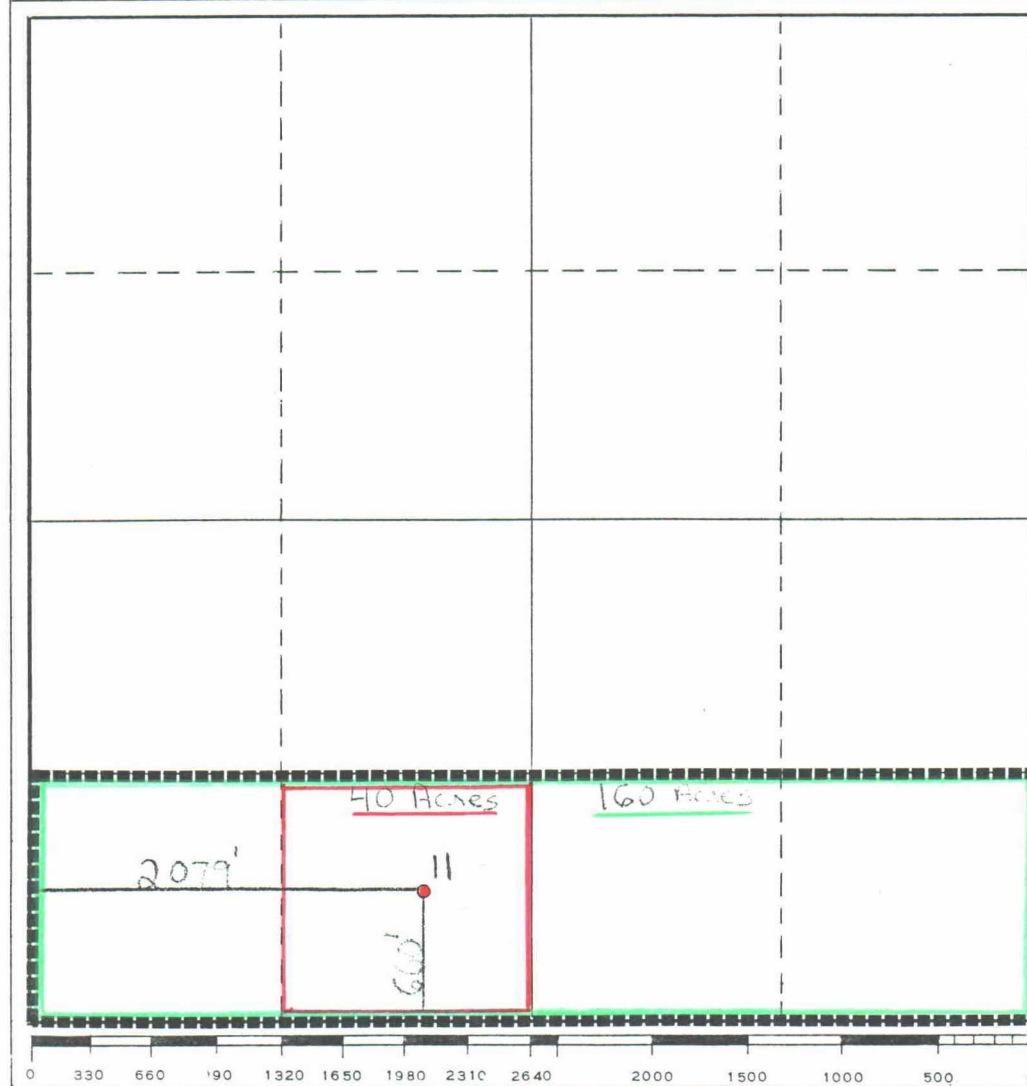
Operator Texaco Inc.			Lease M. B. Weir "B"		Well No. 11
Unit Letter N	Section 12	Township 20-S	Range 37-E	County Lea	
Actual Footage Location of Well: 660 feet from the South line and 2079 feet from the West line					
Ground Level Elev. 3568' GR	Producing Formation Drinkard/Abo/Wildcat	Pool Skaggs Drinkard, Skaggs Abo (Gas) & Wildcat		Dedicated Acreage: 40/160/40 Acres	

1. Outline the acreage dedicated to the subject well by colored pencil or hachure marks on the plat below.
2. If more than one lease is dedicated to the well, outline each and identify the ownership thereof (both as to working interest and royalty).
3. If more than one lease of different ownership is dedicated to the well, have the interests of all owners been consolidated by communitization, unitization, force-pooling, etc?

☐ Yes ☐ No If answer is "yes," type of consolidation _____

If answer is "no," list the owners and tract descriptions which have actually been consolidated. (Use reverse side of this form if necessary.) _____

No allowable will be assigned to the well until all interests have been consolidated (by communitization, unitization, forced-pooling, or otherwise) or until a non-standard unit, eliminating such interests, has been approved by the Commission.



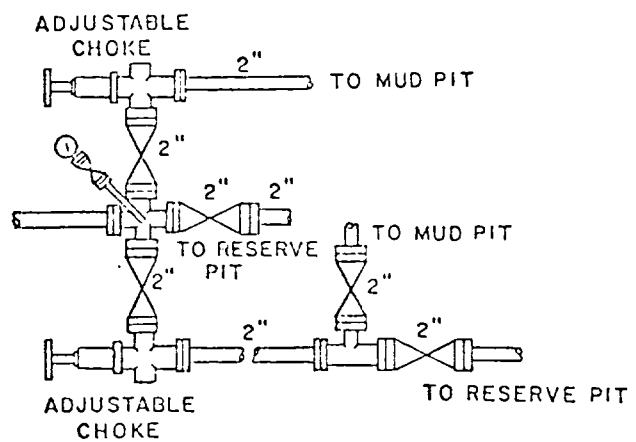
CERTIFICATION

I hereby certify that the information contained herein is true and complete to the best of my knowledge and belief.

Name
Russell E. Sexton
Position
Engineer's Assistant
Company
Texaco Inc.
Date
August 6, 1984

I hereby certify that the well location shown on this plat was plotted from field notes of actual surveys made by me or under my supervision, and that the same is true and correct to the best of my knowledge and belief.

Date Surveyed
July 31, 1984
Registered Professional Engineer and/or Land Surveyor
R. S. Lane
Certificate No.
R. S. Lane #8103



CALL NO.	DATE	EST. NO.	ORG. NO.
DRAWN BY JWD			
CHECKED BY KGW			
APPROVED BY			

INDEX

TEXACO, INC.
PRODUCING DEPARTMENT (EAST)
MIDLAND, TEXAS

TEXAS

EXHIBIT "B"