

EXHIBIT 6

BEFORE EXAMINER OIL COMMISSION
<i>Mabee</i> EXHIBIT NO. <i>6</i>
CASE NO. <i>8571</i>

Section C. Downhole Commingling item 2.

To obtain approval for downhole commingling, the operator of the well shall submit the following in duplicate to the Division Director plus one copy to the appropriate district office of the division.

- c) A plat of the area showing the acreage dedicated to the well and the ownership of all offsetting leases. (attached)
- d) The 24 hour productivity test on division form C116 will be submitted after commingling of all zones have been completed. Attached is a previous administrative order no. DHC-36, dated February 10, 1970, which placed commission order no. MC-1816 into abeyance.
- e) Attached are decline curves of the Belcher 'A' Well No. 1 for the Tubb and Blinebry zones, and also a total production curve. Also attached are decline curves from the Belcher Well No. 1 which show production from the Blinebry, Tubb and Drinkard. The total production curve for the Belcher lease clearly shows that the profitability of that well was improved and benefited the working interest owners, royalty owner, and the state of New Mexico by increasing revenues from the sale of oil and gas.

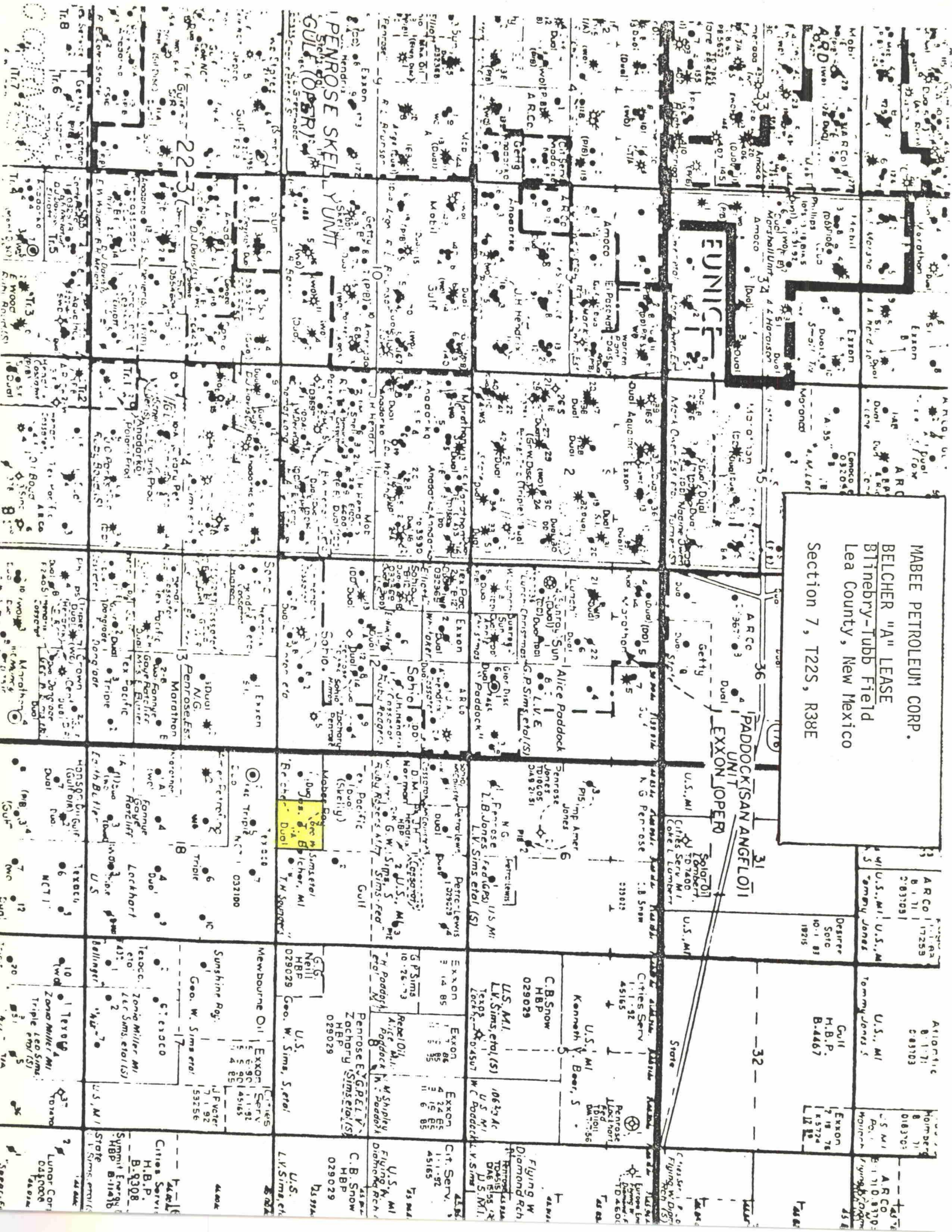
Cumulative oil production from the Belcher 'A' Well No. 1 from the Blinebry and Tubb formations are 26318 BO and 34546 BO, respectively, as of January 1, 1985. By opening and producing the Drinkard in the Belcher 'A' Well No. 1 new oil reserves are estimated to be developed amounting to a minimum of 25,000 BO. Increased oil production is estimated to be 15 BOPD over the current rate of 6.5 BOPD tested during February 1985.

Upon completion of the workover to open the Drinkard pay an updated and complete resume of the well's completion history will be submitted to the Commission along with the proposed allocation formula as agreed upon with the divisions Hobbs district office.

- f) Estimation of current bottom hole pressure for each zone to be commingled cannot be quantifiable information at this time. The reason being that the two zones currently commingled within the wellbore of the Belcher 'A' Well No. 1 (Blinebry and Tubb) have been kept pumped down and considered in the later stages of primary recovery and probably have similar bottomhole pressures of no more than an estimate of 500 psi. The proposed zone to add to the downhole commingling permit (Drinkard) has not been produced within this wellbore. However, offsets within 2000 feet of the Belcher 'A' Well No. 1 have produced 314738 BO as of 1/1/84 from six wells averaging 52,456 BO per well, thereby reducing the original Drinkard BHP of this vicinity to an unknown pressure.

Also attached is a borehole compensated sonic log with gamma ray of the Belcher 'A' Well No. 1 to use as a type log if necessary at the commingling hearing.

MABEE PETROLEUM CORP.
BELCHER "A" LEASE
Blinebry-Tubb Field
lea County, New Mexico
Section 7, T22S, R38E





OIL CONSERVATION COMMISSION

STATE OF NEW MEXICO

P. O. BOX 2088 - SANTA FE

87501

GOVERNOR
DAVID F. CARGO
CHAIRMAN

LAND COMMISSIONER
ALEX J. ARMIJO
MEMBER

STATE GEOLOGIST
A. L. PORTER, JR.
SECRETARY - DIRECTOR

February 10, 1970

Mabee Royalties, Inc.
201 First Savings Building
Midland, Texas 79701

Attention: Mr. V. O. White

Administrative Order No. DHC-36
Belcher "A" No. 1
Tubb and Blinbry ✓
7-22S-38E

Gentlemen:

Reference is made to your recent application for an exception to Rule 303-A of the Commission Rules and Regulations for the subject dually completed well to permit the removal of the down-hole separation equipment and to commingle the production from both pools in the wellbore.

It appearing that the subject well qualifies for approval for such exception pursuant to the provisions of Rule 303-C, and the reservoir damage or waste will not result from such down-hole commingling, and correlative rights will not be violated thereby, you are hereby authorized to commingle the production as described above and Commission Order No. MC-1816, which authorized the dual completion and required separation of the zones, is hereby placed in abeyance.

In accordance with the provisions of Rule 303-C, total commingled oil production from the subject well shall not exceed 40 barrels per day, and total water production from the well shall not exceed 80 barrels per day. The maximum amount of gas which may be produced daily from the well shall be determined by multiplying 2,000 by top unit allowable for the Tubb Pool.

Assignment of allowable to the well and allocation of production from the well shall be on the following basis:

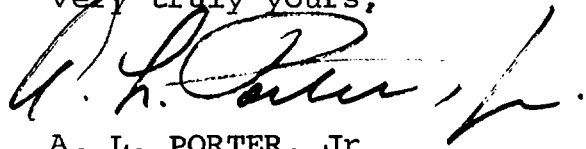
Upper Pool: 40%
Lower Pool: 60%

Mabee Royalties, Inc.

-2-

Pursuant to Rule 303-C 5, the commingling authority granted by this order may be rescinded by the Secretary-Director if, in his opinion, conservation is not being best served by such commingling.

Very truly yours,

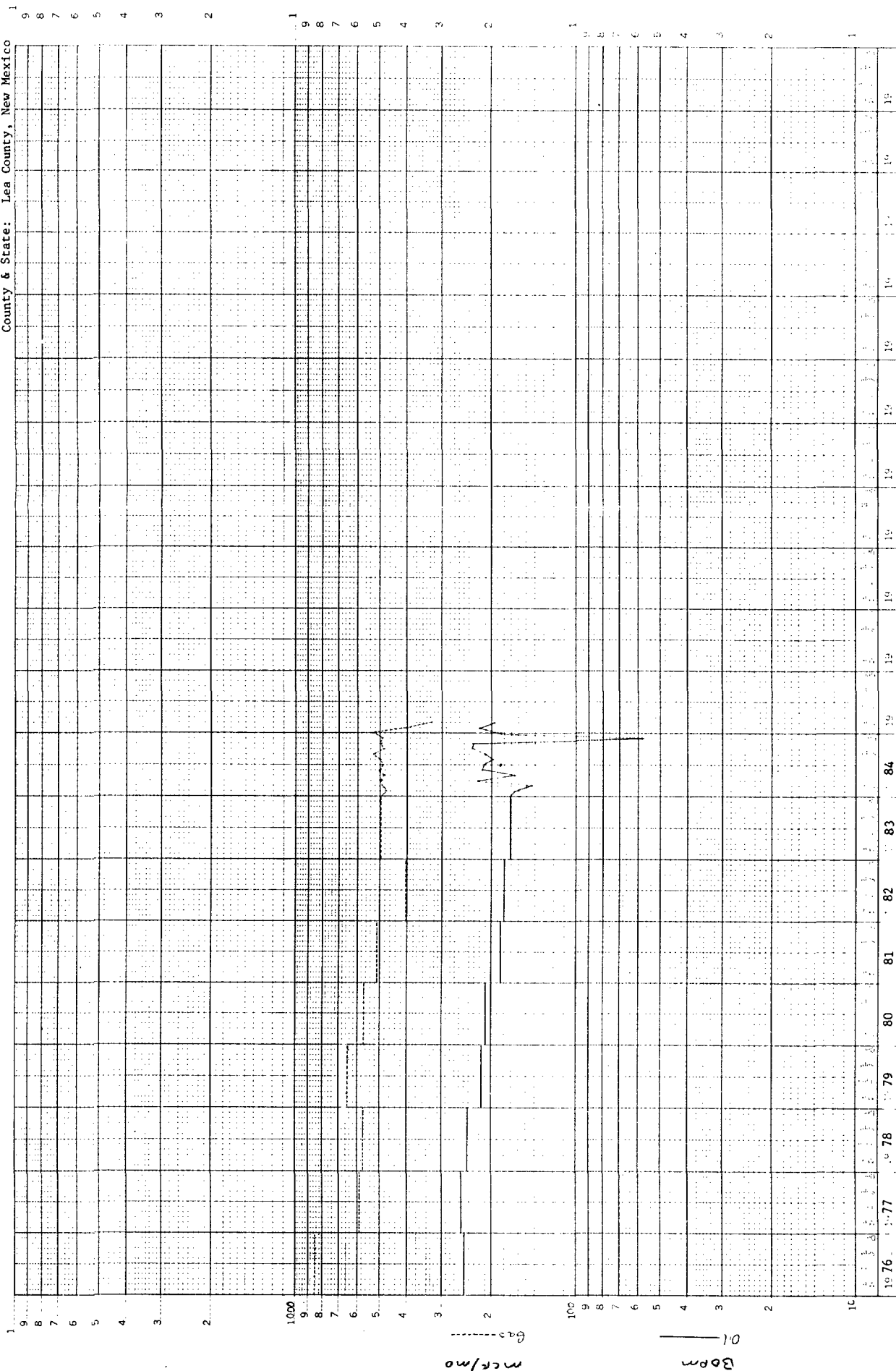
A handwritten signature in dark ink, appearing to read 'A. L. Porter, Jr.', with a stylized flourish at the end.

A. L. PORTER, Jr.
Secretary-Director

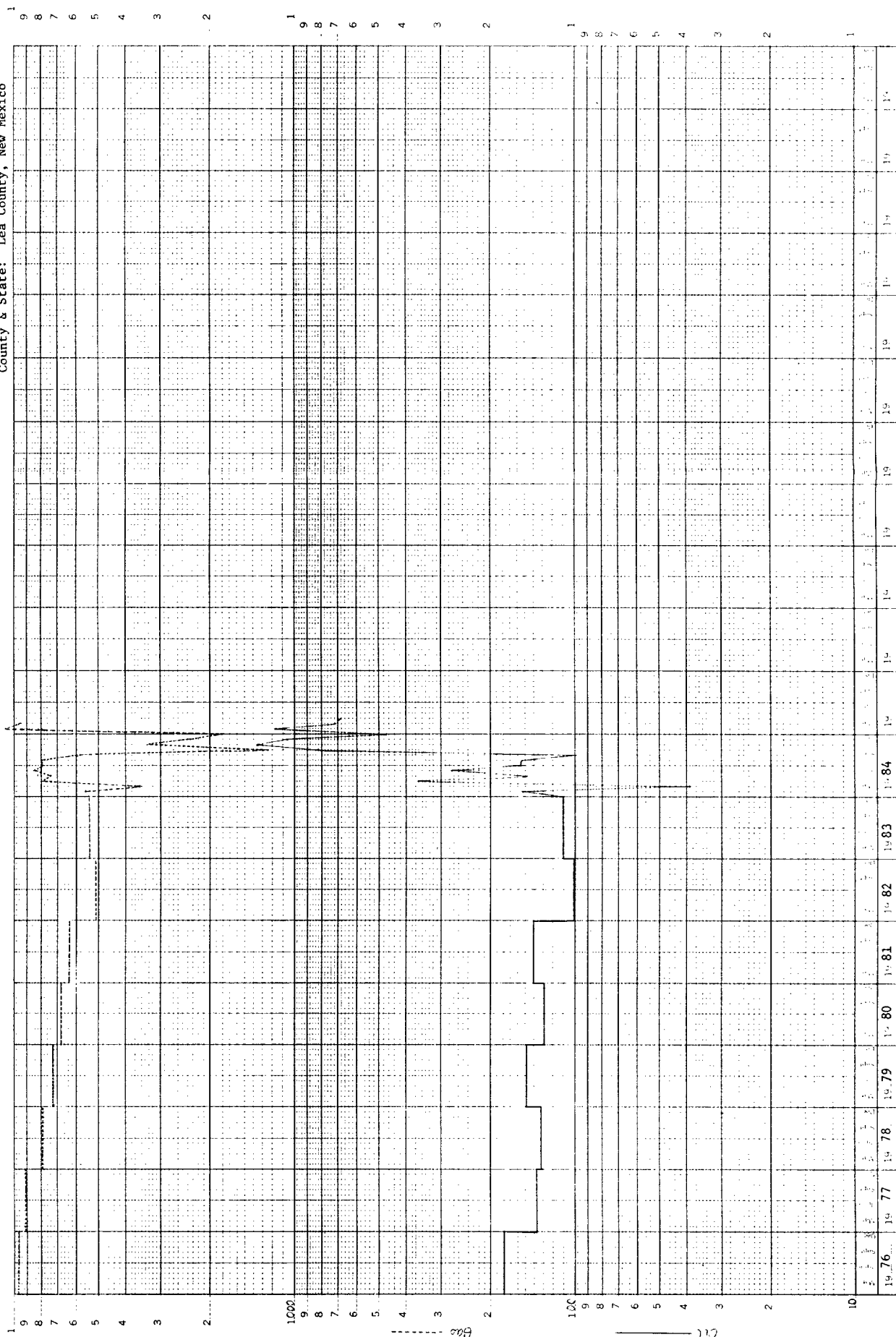
ALP/JEK/og

cc: Oil Conservation Commission - Hobbs
Oil & Gas Engineering Committee - Hobbs

Operator: Mabec Petroleum Corp.
 Lease: Belcher "A"
 Field: Blinbry & Tubb
 County & State: Lea County, New Mexico



Operator: Mabec Petroleum Corp.
 Lease: Belcher
 Field: Blinberry, Tubb & Drinkard
 County & State: Lea County, New Mexico



Completion History

BELCHER #A-1
DRINKARD & TUBB FIELD

5-30-78 Not pumping, waiting on pulling unit.

6-1-78 Moved rig in, pulled rods. Tried to hot oil tubing. Tubing plugged off. Pulled 23 strands found plug. Hot oiled rest of tubing in hole. Dropped standing valve. Tried to pressure up on tubing. Tubing would not hold. Fished standing valve. Pulled rest of tubing out of hole. S.D.O.N.

6-2-78 Tested tubing in hole. Found two bad joints. Ran rods, started well to pumping.

3/21/80 Well off - possible hole in tbg. Will have rig 3-25-80.

3-25-80 Moved rig in. Rigged up. Tried to pressure up on tbg. Tbg would not hold. Unseated pump. Hot oiled down tbg w/65 bbls oil. Pulled 115 7/8" rods 117 3/4" rods. Pulled 186 jts. 2 3/8" tbg. Found hole in 186th jt. Replace one jt tbg. Ran tbg and rods. Started well tp pumping. Pump size 2" x 1 1/4" x 16'.

6-27-81 RU, pulled rods & pump. Wait on hot oiler to pressure up. Pull tbg, replaced broken jt, ran tbg back, flanged well up. SD.

6-29-81 Ran new pump & rods, respaced, hung it on, wait on truck to load hole, checked pump action.

1-15-82 MI RU PU. POOH w/ rods & pump. Dropped SV, unable to pressure up tbg. SDON.

1-16-82 POOH w/ tbg & fish SV. SDON.

1-17-82 RIH w/ tbg, rods & pump. Hung well on & load hole. SDON.

1-18-82 RD MO PU.

10-21-83 MI RU. Pulled rods & tbg. SDON.

10-22-83 Tested tbg in hole. Found hole in bottom 2 jts. Replaced 2 jts tbg. Ran rods. Replaced 4 rods. Started well to pumping.

11-15-84 MI RU PU. POOH w/65-7/8" rods & 185-3/4" rods & pump. PU exchange pump. Ran as pulled. RD MO PU.

MABEE ROYALTIES, INC. - BELCHER "A" #1

1980' FWL & 660' FSL, Section 7, Township 22 South, Range 38 East, Lea County, New Mexico. (Mabee Royalties, Inc. - WI 67.96875%) 7400' test.

8-16-68 TD 7350' lime. Dev. @ 7270' 1°. Mud Wt. 10, Vis 31, WL 15, filter cake 1/32. Finished hole 11 PM 8-15-68, circu. 3 hrs. Pulled out of hole. Started logging 6 AM.

8-19-68 Ran following 7" casing:

6 jts	26# N80	255.40'
52 jts	26# VST&C	1752.26'
41 jts	23# KST&C	1642.81'
59 jts	20# KST&C	2473.64'
18 jts	20# KLT&C	774.15'
<u>11 jts</u>	<u>26# KLT&C</u>	<u>462.18'</u>
187 jts		7360.44'

Set @ 7350' RTS. Cemented w/ 553 sx Class C 4% gel, 4# salt per sx, and 540 sx Class C 4# salt per sx, 8# sand per sx, 3/4% CF-2 per sx. PD 1:50 PM 8-17-68. Rig released & moving.

8-22-68 Ran Gamma Ray Collar Locator. Went in hole w/tbg, displaced wtr w/ lease oil. Spotted 1000 gals 15% BDA on bottom, pulled tbg, perf as follows two 1/2" holes each interval: 6662', 6693', 6760', 6781', 6886', 6900', 6929', 7001', 7043', 7049', 7066', 7071', 7105', 7137-1/2', 7161', 7185', 7195-1/2', 7218'. Presently going in hole w/Husky pkr to treat w/3000 gals 15% & 72 ball sealers.

8-23-68 Recov. 71.07 bbls of 280 bbl load. Pulled tbg & pkr. Attempted to frac Drinkard, max. press. 3300# @ 12 BPM. Pumped 120 bbls, could not breakdown. Went in hole w/casing scraper & bit to determine if all ball sealers were off perfs. Came out of hole w/tbg & scraper. Pumped into formation @ 3300 psi, max. return 17 BPM, decreasing to 15 BPM. SD treatment. Set Halliburton Easy Drill Plug @ 6370', went in hole w/tbg, spotted 2000 gals 15% acid. Came out of hole w/tbg, perf two 1/2" holes per ft as follows: 6177', 6191', 6195', 6209', 6223', 6234', 6251', 6267', 6279', 6301', 6321'.

8-24-68 Fraced Tubb formation w/40,000 gals fresh wtr, treated w/WF 50, WF 10 & 60,000# sand plus 8 ball sealers. Max. press. 3300#, avg. press. 2900#, final press. 2800#. ISIP 1950#, avg. injection rate 39.5. SI.

8-25-68 Opened well 8 AM, 1200# on csg. Well kicked off & flowed 48 hrs. Recov. 48 bbls load wtr. Went in hole w/tbg & pkr. Started swabbing 2:40 PM.

8-26-68 By 9 AM had recov. 282 bbls load wtr. Fluid level 3000' FS. No sho of oil. Swabbing @ rate 14 bbls per hr. Total load to recov. 1500 bbls.

MABEE ROYALTIES, INC. - BELCHER "A" #1

1980' FWL & 660' FSL, Section 7, Township 22 South, Range 38 East, Lea County, New Mexico. (Mabee Royalties, Inc. - WI 67.96875%) 7400' test.

- 8-27-68 Swabbed 242 bbls last 24 hrs. Have recov 526 bbls total load. Well swabbed down to 4500' w/sho of oil, but no gas. 974 bbls load yet to recover.
- 8-28-68 Swabbed 174 bbls last 24 hrs. Fluid level 5300' FS. Hauled 100 bbls new oil to tank battery. 1000' fluid in hole. Total recovery to date 800 bbls fluid. Sho of gas.
- 8-29-68 Swabbed. 76 bbls total fluid of which 26 bbls new oil. Fluid level 5850' FS. SI 12 hrs. Fluid level rose to 3700' FS, no tbg press. 1st pull of swab 19.8 bbls fluid, 95% oil. 3rd pull of swab 19% oil, very little gas. Total fluid recov. 873 bbls, 627 bbls yet to recov. Continuing to swab.
- 8-30-68 Swabbed 79.70 bbls fluid, 34 bbls of which oil. SI 13-1/2 hrs. TP 200 psi. 1st pull on swab 100% oil, 3rd pull 19% oil. Found fluid level @ 3600' FS. Total fluid to recover 547 bbls. Still no gas. Swabbing level 5800'.
- 8-31-68 Swabbed 102.41 bbls fluid of which 37.8 bbls oil, 64 bbls wtr. Well swabbed down to 5800'. SD 12 hrs, TP 290#, fluid level 3000'. 1st run of swab 100% oil, 2nd run 85% oil.
- 9- 1-68 SI
- 9- 2-68 TP 500 psi. Flowed 8.8 bbls oil to tank & died. Released pkr, pulled tbg & pkr. Reran Husky pkr, bull plugged between Blinbry & Tubbs. Pkr set @ 5802', pulled 63' tbg. Spotted 500 gals BDA acid. Tested pkr to 3000#, pkr held. Pulled tbg & perf two 1/2" holes each interval: 5623', 5635', 5641', 5645', 5649', 5690', 5712', 5722', 5726', 5733', 5735', 5742'.
- 9- 3-68 Went in hole w/tbg & pkr. Set pkr @ 5046'. Displaced 500 gals BDA @ 1/2 BPM, followed by 47.6 bbls brine wtr. Then acidized w/1000 gals 15% acid, 30 ball sealers. Displaced 47 bbls brine wtr. Max press 2700#, final press 2600#, ISIP 1400#, 10 min. SIP 1400#. Opened well on 20/64" ck, flowed back total 29 bbls & died. Started swabbing. Have recov 42 bbls fluid in 2-1/2 hrs. Total fluid to recov 133 bbls. 91 bbls yet to be recov.
- 9- 4-68 Well SI 14 hrs, 580 psi on tbg. Open on 1" ck, flowed 11 bbls in 1 hr, TP 100#. Released pkr, killed well, pulled tbg & pkr. Fraced Blinbry w/30,000 gals weak brine & 60,000# sand, 12 ball sealers. Max press 2600 psi, avg. press 2300 psi, final press 2600 psi, ISDP 1800 psi, 15 min SDP 1750 psi. Avg. injection rate 34 BPM. Total load recov. 1060 bbls. Well SI to stabilize.

MABEE ROYALTIES, INC. - BELCHER "A" #1

1980' FWL & 660' FSL, Section 7, Township 22 South, Range 38 East, Lea County, New Mexico. (Mabee Royalties, Inc. - WI 67.96875%) 7400' test.

- 9- 5-68 SI 19 hrs. Press. 1200 psi, open on 21/64 ck. Recov 84 bbls load wtr w/csg press falling to 520#. Continuing to flow.
- 9- 6-68 Open well on 3/4" ck & 2" csg. Well died. Went in hole w/tbg, pulled retrievable plug. Went in hole w/tbg & pkr. Found 60' sand in bottom of hole. Pulled tbg to clean out sand.
- 9- 7-68 Reran tbg, circu sand out of hole, pulled tbg. Ran tbg & pkr. Set pkr @ 6100' w/220' tail pipe. Ran 5803' 2" tbg to produce Blinebry. Started swabbing 7 PM, fluid level 800' FS & in 12 hrs swabbed 160 bbls load wtr, lowered fluid level to 2300'. Csg started gassing, closed csg valve & continued swabbing.
- 9- 9-68 Recov 144 bbls fluid. Fluid level 2700'. No pressure on csg. No sho of oil. Have recov 663 bbls load of total of 1125 bbls load, 462 bbls yet to recov.
- 9-10-68 Swabbed & flowed 168 bbls fluid of which 84 oil. CP 8 PM 9-9-68 600#, SI 12 hrs, CP 700#, TP 280#, fluid level 2400' FS. 1st swab 100% oil. Have recov 829 bbls fluid, 296 bbls load yet to recover.
- 9-11-68 Swab 24 hrs. Recov 250 bbls fluid -- 109 bbls oil, 141 bbls wtr. Started to bleed csg down to run rods, well kicked off & flowed. Running rods on Tubb zone prep to put on pump.
- 9-12-68 Running rods
- 9-13-68 Prep to pump
- 9-16-68 N.R.
- 9-17-68 Pumped total fluid of 300 bbls out of Tubbs - 42.20 oil.
- 9-23-68 Running packer leakage test.
- 9-26-68 Tubb potential - 66 BO, 12 BW
Blinebry potential - 96 BO, 50 BW
FINAL REPORT

BLINEBRY FIELD
TUBB FIELD

MABEE ROYALTIES, INC. - BELCHER "A" #1

1980' FWL & 660' FSL, Section 7, Township 22 South, Range 38 East, Lea County, New Mexico. (Mabee Royalties, Inc. - WI 67.96875%) 7400' test.

- 7-26-68 Moved in, rigged up, will spud today.
- 7-27-68 Drld 12-1/4" hole to 1300'. Dev. @ 302' 1/4°, @ 807' 1/4°, @ 1300' 3.4°.
- 7-28-68 Drlg. 1590' salt & anhy. Ran 41 jts 9-5/8", 32#, ST&C, set @ 1300' RTS. Cemented w/420 sx Class C 4% gel, 2% CC, & 150 sx encore 2% CC. PD 12:30 Noon. WOC 12 hrs. Tested 9-5/8" w/1000# for 30 min. & held OK. Cement circu, circu out 100 sx,
- 7-29-68 Drlg. 2705' anhy & salt. Dev. @ 1876' 3/4°, @ 2351' 1°, @ 2567' 1-3/4°, @ 2691' 1-1/2°.
- 7-30-68 Drlg. 3201' anhy & gyp. Dev. @ 3020' 1-1/4°.
- 7-31-68 Drlg. 3669' anhy. Dev. @ 3260' 3/4°.
- 8- 1-68 Drlg. 3990 lm. Dev @ 3815' 3/4°. 21 hrs drlg time made 321'.
- 8- 2-68 Drlg. 4268 lm. Dev @ 4260 3/4°. 20 hrs rotating with brine wtr. 278' progress.
- 8- 3-68 Drlg. 4530' lime. Dev. @ 4260' 3/4°. Fished for & recov. 9 drill collars.
- 8- 4-68 Drlg. 4950' lime.
- 8- 5-68 Drlg. 5163' lime. Dev. @ 5160' 3/4°.
- 8- 6-68 Drlg. 5422' lime.
- 8- 7-68 Drlg. 5715' lime.
- 8- 8-68 Drlg. 5982' lime. Dev. @ 5980' 1/2°.
- 8- 9-68 Drlg. 6178' lime.
- 8-10-68 6389' lime. Dev. @ 6389' 1°.
- 8-11-68 Drlg. 6590' lime.
- 8-12-68 Drlg. 6732' lime. Dev. @ 6686' 1-1/2°.
- 8-13-68 Drlg. 6916' lime.
- 8-14-68 Drlg. 7091' lime. Dev. @ 7080' 1-1/4°. Mud Wt. 10.3, Vis 31, WL 30.
- 8-15-68 Drlg. 7222' lime. Mud Wt. 9.9, Vis 31, WL 20, filter cake film.

