

Case 8585

# Memo

From  
ROY JOHNSON  
Geologist

To

Application of Union Oil Company of California for an exception to Division Order No. R-2212, Lea County, New Mexico. Applicant, in the above-styled cause, seeks an exception to ~~Division Order No. R-2212~~ the Special Rules And Regulations For The North Anderson Ranch Wolfcamp Pool as promulgated by Division Order No. R-2212, to authorize an unorthodox oil well location for its Brown State Unit Well No. 1 located 660 feet from the North line and 1980 feet from the East line of Section 28, Township 15 South, Range 32 East, the W $\frac{1}{2}$  NE $\frac{1}{4}$  of said Section 28 to be dedicated to said well.

Oil Conservation Division  
P.O. Box 2088 Santa Fe, N.M. 87501

Union Oil and Gas Division: Central Region

Union Oil Company of California  
500 North Marienfeld, Midland, Texas 79701

Telephone (915) 682-9731  
Mailing Address: P. O. Box 671  
Midland, Texas 79702



Midland District

March 8, 1985

*Case 5955*

New Mexico Oil Conservation Commission  
P. O. Box 2088  
Santa Fe, New Mexico 87501

SUBJECT:

Exception to Field Rule No. 4  
Order No. R-2212  
Brown State Unit No. 1  
N. Anderson Ranch (Wolfcamp) Field  
Lea County, New Mexico

Gentlemen:

Union Oil Company of California seeks administrative approval for an unorthodox location for the Brown State Unit No. 1, located 660° FNL and 1980' FEL, Section 28, T-15-S, R-15-E, Lea County, New Mexico.

The N. Anderson Ranch Field Rule No. 4 specifies the initial well on any 80-acre unit in said pool shall be located on either the NE/4 or the SW/4 of a governmental quarter section. The subject well was drilled to the Morrow horizon in compliance with NMOCC rules and regulations, located in the NW/4 of the governmental quarter section. The well was recompleted in the Wolfcamp horizon, and the location is no longer in compliance with field rules set out for orthodox location.

In support of this request, please find the following attached:

1. Well location and acreage dedication plat (Form C-102).
2. List of offset operators.
3. Plat of lease area w/offset operators.

Your favorable consideration in granting this request administratively will be appreciated.

Very truly yours

A handwritten signature in cursive script, appearing to read "L. F. Thompson".

L. F. Thompson

District Operations Manager

MGE:ggc  
Attachments

**NEW MEXICO OIL CONSERVATION COMMISSION  
WELL LOCATION AND ACREAGE DEDICATION PLAT**

Form C-102  
Supersedes C-128  
Effective 1-1-65

All distances must be from the outer boundaries of the Section.

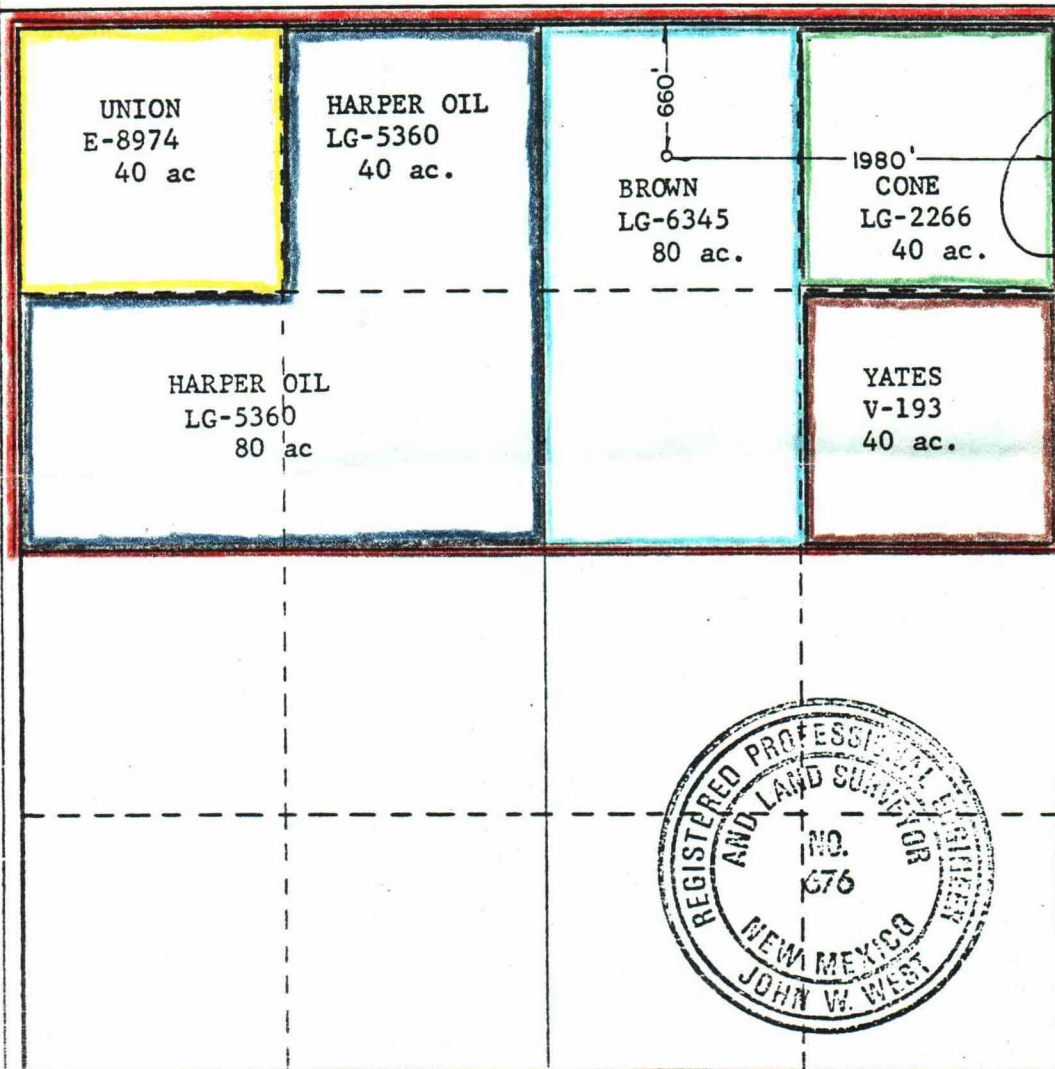
Operator <b>UNION OIL OF CALIFORNIA</b>			Lease <b>BROWN STATE UNIT</b>		Well No. <b>1</b>
Unit Letter <b>B</b>	Section <b>28</b>	Township <b>15S</b>	Range <b>32E</b>	County <b>LEA</b>	
Actual Footage Location of Well: <b>1980</b> feet from the <b>EAST</b> line and <b>660</b> feet from the <b>NORTH</b> line					
Ground Level Elev. <b>4307.9</b>	Producing Formation <b>Wolfcamp</b>		Pool <b>ANDERSON RANCH WOLFCAMP, NORTH</b>		Dedicated Acreage: <b>80</b> Acres

1. Outline the acreage dedicated to the subject well by colored pencil or hachure marks on the plat below.
2. If more than one lease is dedicated to the well, outline each and identify the ownership thereof (both as to working interest and royalty).
3. If more than one lease of different ownership is dedicated to the well, have the interests of all owners been consolidated by communitization, unitization, force-pooling, etc?

☒ Yes    ☐ No    If answer is "yes," type of consolidation STATE OF NEW MEXICO APPROVED UNIT

If answer is "no," list the owners and tract descriptions which have actually been consolidated. (Use reverse side of this form if necessary.) \_\_\_\_\_

No allowable will be assigned to the well until all interests have been consolidated (by communitization, unitization, forced-pooling, or otherwise) or until a non-standard unit, eliminating such interests, has been approved by the Commission.



**CERTIFICATION**

I hereby certify that the information contained herein is true and complete to the best of my knowledge and belief.

*[Signature]* **J.R. HUGHES**

**DISTRICT DRILLING SUPT.**

Position

**UNION OIL COMPANY OF CALIFORNIA**

Company

**FEB. 27, 1985**

Date

I hereby certify that the well location shown on this plat was plotted from field notes of actual surveys made by me or under my supervision, and that the same is true and correct to the best of my knowledge and belief.

Date Surveyed

**5/22/84**

Registered Professional Engineer  
and/or Land Surveyor

*[Signature]*  
Certificate No. **JOHN W. WEST, 676**  
**RONALD J. EIDSON, 3239**



0 220 660 1100 1540 1980 2420 2860 3300 3740 4180 4620 5060 5500 5940 6380 6820 7260 7700 8140 8580 9020 9460 9900 0

OFFSET OPERATOR  
Brown State Unit No. 1  
North Anderson Ranch (Wolfcamp) Field  
Lea County, New Mexico

Santa Fe Energy Company  
7200 I-40 West  
Amarillo, Texas 79106

UNION OIL COMPANY OF CALIFORNIA  
CENTRAL REGION-MIDLAND DISTRICT

ANDERSON RANCH FIELD  
LEA CO., NEW MEXICO

16

Radtko & Assoc.  
Texaco-St.

15

Union  
St. 17  
10,100'

NO. 1  
NE Anderson Ranch  
Un.  
10,207'

Brown  
St. "UTP"  
3

Union Tex. Pe.  
NM-15  
10,348'

20

Cabot  
Curtis-St.  
El 4333  
TD 10070

Santa Fe Energy  
"feather"  
2  
Santa Fe Energy  
(H.L. Brown, Jr.)  
21 St.-UTP  
Wo 1

22

Featherstone  
Cabot St.  
El 4340  
TD 10290

Union  
Brown-St.

Sinclair  
St. 1-2 312  
El 4318  
TD 10750

Agar  
(DOB)  
Champion St.  
El 4309  
TD 10260

Gt. Western  
Gt. Western-St.  
10,268'

29

28

Aztec  
St.

Union

Union

Thompson  
Sinc-St.

Union

Union

Gulf  
1-2 St. Gt.  
El 4335  
TD 13655

NO. ANDERSON RNCH. UNIT  
(UNION OPER.)

32

Tenneco  
Gulf-St.  
10,300'

King Resources  
Shell-St. Brown  
St. 1  
9900'  
12,856'

Union

McAlester

Amerada  
St. CN  
5025'

Stoltz  
Standard St.  
El 4717  
TD 10330

34

AMOCO  
St. NO. 100'

Burleson  
Hull  
Sunray St.

Mobil

Gulf  
R-A

Gulf  
B