

DATE: 2/20/82  
DOWLE HARTMAN, OIL OPERATOR  
DOWLE HARTMAN SYSTEM RUN DATE 8/22/85 TIME 09:57:41 PAGE 1  
LEASE NAME: ARCO  
WELL NO. 23  
OPER: ARCO LEAS, B. INC.  
LOCATION: 21H225 JTE DOWLE ID # 302257E21H007T FIELD - JALPAT TANGILL YR 7 RWS (PRO GAS) YR PRODUCTION UNIT # - 70864  
SELECTION FROM-TO 70-85  
CUMULATIVE DATES - LIQUID 0/00/00 CUMULATIVE DATES - LIQUID 0 LIG GATHERER  
GAS 0/00/00 GAS GAS GATHERER EL PASO NATURAL GAS COMPANY

PRODUCTION DATA

YR NR WELLS PROD	JAN	FEB	MAR	APR	MAY	JUN	JUL	AUG	SEP	OCT	NOV	DEC	YTD	ITD	AVG
76 FLOW	0	0	0	0	0	0	0	0	0	1	1	1			
LIFT	0	0	0	0	0	0	0	0	0	0	0	0			
DAYS	0	0	0	0	0	0	0	0	0	0	0	0			
OIL	0	0	0	0	0	0	0	0	0	0	0	0			
WATER	0	0	0	0	0	0	0	0	0	0	0	0			
GAS	0	0	0	0	0	0	0	0	0	247	278	159	684	684	228
77 FLOW	1	1	1	1	1	1	1	1	1	1	1	1			
LIFT	0	0	0	0	0	0	0	0	0	0	0	0			
DAYS	0	0	0	0	0	0	0	0	0	0	0	0			
OIL	0	0	0	0	0	0	0	0	0	0	0	0			
WATER	0	0	0	0	0	0	0	0	0	0	0	0			
GAS	48	25	57	233	194	139	148	172	130	125	121	163	1555	2239	130
78 FLOW	1	1	1	1	1	1	1	1	1	1	1	1			
LIFT	0	0	0	0	0	0	0	0	0	0	0	0			
DAYS	0	0	0	0	0	0	0	0	0	0	0	0			
OIL	0	0	0	0	0	0	0	0	0	0	0	0			
WATER	0	0	0	0	0	0	0	0	0	0	0	0			
GAS	113	145	143	69	87	94	106	114	118	137	118	94	1338	3577	112
79 FLOW	1	1	1	1	1	1	1	1	1	1	1	1			
LIFT	0	0	0	0	0	0	0	0	0	0	0	0			
DAYS	0	0	0	0	0	0	0	0	0	0	0	0			
OIL	0	0	0	0	0	0	0	0	0	0	0	0			
WATER	0	0	0	0	0	0	0	0	0	0	0	0			
GAS	114	116	121	116	116	164	111	97	148	136	93	0	1332	4909	121
80 FLOW	1	1	1	1	1	1	1	1	1	1	1	1			
LIFT	0	0	0	0	0	0	0	0	0	0	0	0			
DAYS	0	0	0	0	0	0	0	0	0	0	0	0			
OIL	0	0	0	0	0	0	0	0	0	0	0	0			
WATER	0	0	0	0	0	0	0	0	0	0	0	0			
GAS	65	102	146	129	141	128	162	131	135	72	209	162	1582	6491	132
81 FLOW	1	1	1	1	1	1	1	1	1	1	1	1			
LIFT	0	0	0	0	0	0	0	0	0	0	0	0			
DAYS	0	0	0	0	0	0	0	0	0	0	0	0			
OIL	0	0	0	0	0	0	0	0	0	0	0	0			
WATER	0	0	0	0	0	0	0	0	0	0	0	0			
GAS	147	116	106	91	151	107	108	70	77	82	78	865	1978	8489	167

BEFORE EXAMINER STOGNER  
Oil Conservation Division  
Exhibit No. 9  
Case No. 8690

LEASE NAME ARCO  
WELL 28  
OPER BURESON LEWIS B INC  
LOCATION 214255 37E  
DOWDAYS ID # 3022557E214007  
FIELD - JALMAT TMSILL YR 7 RWS (PRO GAS) YT PRODUCTION UNIT # - 70844  
SELECTION FROM-TO 70-85  
CUM DATES - LIQUID 0/00/00 CUMES - LIQUID 0 LIG GATHERER  
GAS 0/00/00 GAS GAS GATHERER EL PASO NATURAL GAS COMPANY

YR NR WELLS FROM		JAN	FEB	MAR	APR	MAY	JUN	JUL	AUG	SEP	OCT	NOV	DEC	YTD	ITD	AVG
82 FLOW		1	1	1	1	1	1	1	1	1	1	1	1			
LIFT		0	0	0	0	0	0	0	0	0	0	0	0	0		0
DAYS		0	0	0	0	0	0	0	0	0	0	0	0	0		0
OIL		0	0	0	0	0	0	0	0	0	0	0	0	0		0
WATER		0	0	0	0	0	0	0	0	0	0	0	0	0		0
GAS		160	119	881	118	1041	945	64	44	50	1109	57	75	4653	13152	389
83 FLOW		1	1	1	1	1	1	1	1	1	1	1	1			
LIFT		0	0	0	0	0	0	0	0	0	0	0	0	353		29
DAYS		31	28	31	30	31	30	31	20	30	31	30	30	0		0
OIL		0	0	0	0	0	0	0	0	0	0	0	0	0		0
WATER		0	0	0	0	0	0	0	0	0	0	0	0	0		0
GAS		67	61	70	56	57	60	60	28	53	49	49	51	661	13813	55
84 FLOW		1	1	1	1	1	1	1	1	1	1	1	1			
LIFT		0	0	0	0	0	0	0	0	0	0	0	0	351		29
DAYS		31	28	31	30	31	16	31	31	30	31	30	31	0		0
OIL		0	0	0	0	0	0	0	0	0	0	0	0	0		0
WATER		0	0	0	0	0	0	0	0	0	0	0	0	0		0
GAS		61	53	60	50	54	15	46	48	44	52	52	59	594	14407	50
85 FLOW		1	1	1	1	1	0	0	0	0	0	0	0			
LIFT		0	0	0	0	0	0	0	0	0	0	0	0	150		30
DAYS		31	28	31	29	31	0	0	0	0	0	0	0	0		0
OIL		0	0	0	0	0	0	0	0	0	0	0	0	0		0
WATER		0	0	0	0	0	0	0	0	0	0	0	0	0		0
GAS		65	52	55	48	51	0	0	0	0	0	0	0	271	14678	54

LEASE NAME ASDJ      LOCATION 21H2S 3TE      DWIGHTS ID # 3022SSTE21H00YT      FIELD - JALMAT TMSILL VT 7 RWS (PROD GAS) VT      PROPRATION UNIT # - 70864

WELL 28      OPER BURLISON LEWIS B INC      CUMES DATES - LIQUID 0/00/00      CUMES - LIQUID GAS      0 LID GATHERER      0 GAS GATHERER EL PASO NATURAL GAS COMPANY

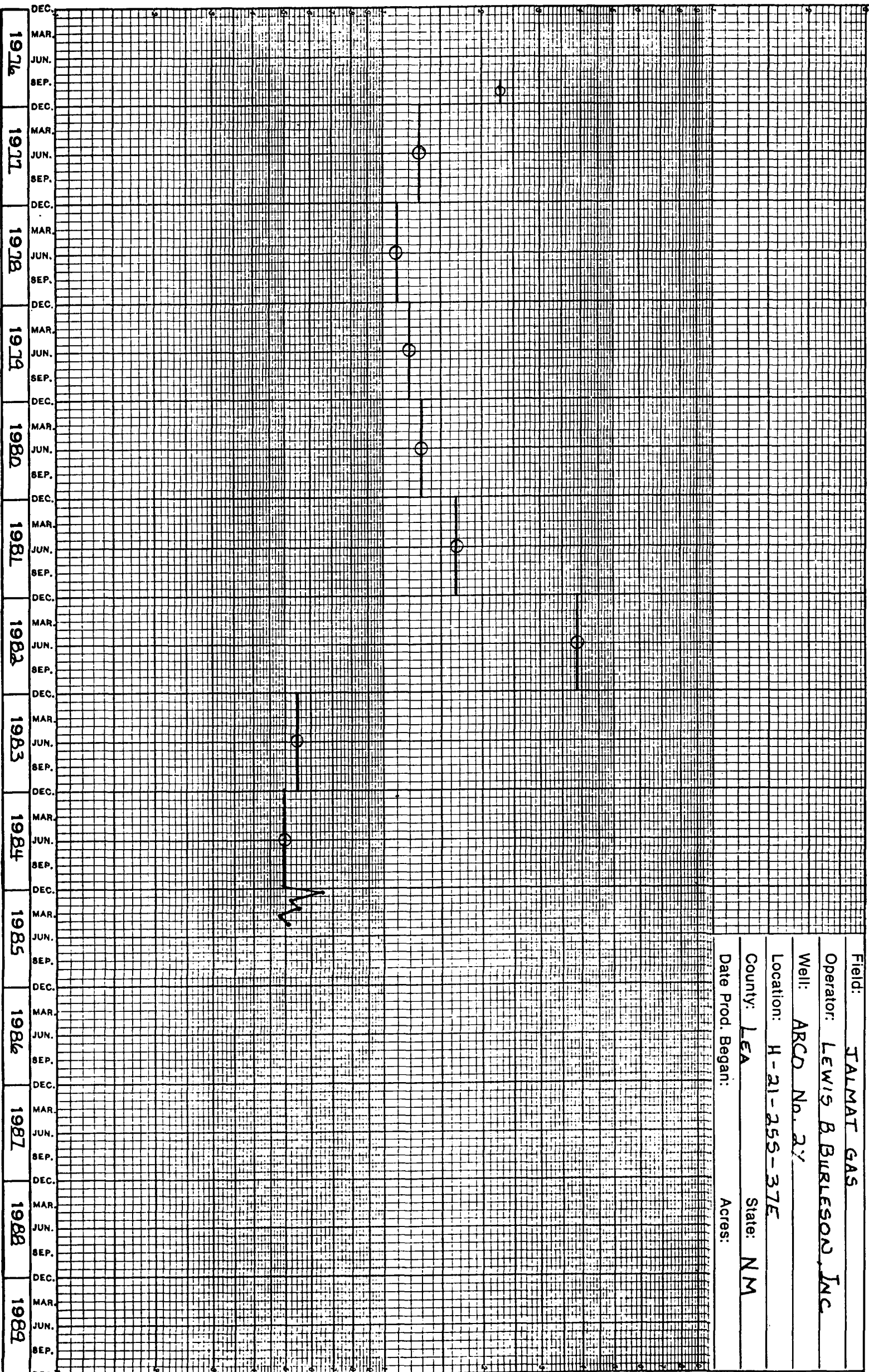
SELECTION FROM-TO 70-85

TEST DATA

WELLHEAD		BOT HOLE		Z-FACTOR	P/Z	TEST DATE	
TEST DATE	S/I PRESS	PRESSURE				GAS CUMES	
75/12/30	131	131	0	.000	0	1,110	
77/05/10	244	0	0	.000	0	2,715	
78/05/02	80	0	0	.000	0	4,021	
79/04/24	31	0	0	.000	0	5,287	
80/04/15	29	0	0	.000	0	6,836	
81/03/24	49	0	0	.000	0	9,753	
82/04/27	49	0	0	.000	0	13,359	
83/04/05	47	0	0	.000	0		

## 10

Date Prod. Began: Acres:



DW120M2  
NOTLE HARTMAN, OIL OPERATOR  
DWIGHTS ENERGY DATA SYSTEM  
RUN DATE 8/22/85 TIME 09:57:41

PAGE 3

LEASE NAME WARTFIELD LOCATION 210225-1E DWIGHTS ID # 3022537E21000TT FIELD - JALANI TANKILL TT 7 RWGS (PRO GAS) TT PRODUCTION UNIT # - 53115

WELL  
1  
OPER BURSON LEWIS B INC

1ST PRODUCTION 0/00/00

DATE DATES - LIQUID 0/67/12 COMES - LIQUID 0 LID GATHERER  
GAS 0/67/12 GAS 2964549 GAS GATHERER EL PASO NATURAL GAS COMPANY

SELECTION  
FROM-TO  
70-85

PRODUCTION DATA

TR NR	WELLS	PROD	JAN	FEB	MAR	APR	MAY	JUN	JUL	AUG	SEP	OCT	NOV	DEC	YTD	ITD	AWG
70	FLUM		1	1	1	1	1	1	1	1	1	1	1	1			
	LIFT		0	0	0	0	0	0	0	0	0	0	0	0			0
	DAYS		0	0	0	0	0	0	0	0	0	0	0	0		0	0
	OIL		0	0	0	0	0	0	0	0	0	0	0	0		0	0
	WATER		0	0	0	0	0	0	0	0	0	0	0	0		0	0
	GAS		888	887	1072	995	888	531	140	784	737	768	673	653	9036	2973585	753
71	FLUM		1	1	1	1	1	1	1	1	1	1	1	1			
	LIFT		0	0	0	0	0	0	0	0	0	0	0	0			0
	DAYS		0	0	0	0	0	0	0	0	0	0	0	0		0	0
	OIL		0	0	0	0	0	0	0	0	0	0	0	0		0	0
	WATER		0	0	0	0	0	0	0	0	0	0	0	0		0	0
	GAS		624	426	622	1203	1299	1184	1095	1185	949	1143	1163	980	11873	2985458	989
72	FLUM		1	1	1	1	1	1	1	1	1	1	1	1			
	LIFT		0	0	0	0	0	0	0	0	0	0	0	0			0
	DAYS		0	0	0	0	0	0	0	0	0	0	0	0		0	0
	OIL		0	0	0	0	0	0	0	0	0	0	0	0		0	0
	WATER		0	0	0	0	0	0	0	0	0	0	0	0		0	0
	GAS		920	1014	911	919	869	818	1014	1073	804	630	644	786	10402	2995860	867
73	FLUM		1	1	1	1	1	1	1	1	1	1	1	1			
	LIFT		0	0	0	0	0	0	0	0	0	0	0	0			0
	DAYS		0	0	0	0	0	0	0	0	0	0	0	0		0	0
	OIL		0	0	0	0	0	0	0	0	0	0	0	0		0	0
	WATER		0	0	0	0	0	0	0	0	0	0	0	0		0	0
	GAS		1083	944	1157	944	959	996	1087	888	897	655	977	1385	11974	3007834	998
74	FLUM		1	1	1	1	1	1	1	1	1	1	1	1			
	LIFT		0	0	0	0	0	0	0	0	0	0	0	0			0
	DAYS		0	0	0	0	0	0	0	0	0	0	0	0		0	0
	OIL		0	0	0	0	0	0	0	0	0	0	0	0		0	0
	WATER		0	0	0	0	0	0	0	0	0	0	0	0		0	0
	GAS		1625	1555	1789	1710	1510	1575	1718	1618	1545	1756	1447	1669	19517	3027351	1626
75	FLUM		1	1	1	1	1	1	1	1	1	1	1	1			
	LIFT		0	0	0	0	0	0	0	0	0	0	0	0			0
	DAYS		0	0	0	0	0	0	0	0	0	0	0	0		0	0
	OIL		0	0	0	0	0	0	0	0	0	0	0	0		0	0
	WATER		0	0	0	0	0	0	0	0	0	0	0	0		0	0
	GAS		1631	1406	1612	1464	1025	1147	937	1272	1223	912	751	793	14173	3041524	1181

LEASE NAME: WAFFIELD  
WELL: 1  
OPER: BURESON LEWIS B INC  
LOCATION: 210226 JTE  
DAUGHTS ID # 30225STZ1000YT  
FIELD - JALMAT TMSILL TT 7 RWS (PRD GAS) YT  
PROBATION UNIT # - 53115  
SELECTION FROM: 10-05  
1ST PRODUCTION: 0/00/00  
CUM DATES - LIQUID: 0/69/12  
CUMES - LIQUID: 0  
GAS: 0/69/12  
GAS: 2964549  
GAS GATHERER: EL PASO NATURAL GAS COMPANY

YR NR WELLS FROM		JAN	FEB	MAR	APR	MAY	JUN	JUL	AUG	SEP	OCT	NOV	DEC	YTD	ITD	AVG
76 FLOW		1	1	1	1	1	0	1	1	1	1	1	1			
LIFT		0	0	0	0	0	0	0	0	0	0	0	0	0	0	0
DAYS		0	0	0	0	0	0	0	0	0	0	0	0	0	0	0
OIL		0	0	0	0	0	0	0	0	0	0	0	0	0	0	0
WATER		0	0	0	0	0	0	0	0	0	0	0	0	0	0	0
GAS		781	633	454	354	282	0	1206	1195	977	646	647	845	8040	3049564	731
77 FLOW		1	1	1	1	1	1	1	1	1	1	1	1			
LIFT		0	0	0	0	0	0	0	0	0	0	0	0	0	0	0
DAYS		0	0	0	0	0	0	0	0	0	0	0	0	0	0	0
OIL		0	0	0	0	0	0	0	0	0	0	0	0	0	0	0
WATER		0	0	0	0	0	0	0	0	0	0	0	0	0	0	0
GAS		723	475	465	421	323	226	233	214	229	240	175	206	3930	3053494	328
78 FLOW		1	1	1	1	1	1	1	1	1	1	1	1			
LIFT		0	0	0	0	0	0	0	0	0	0	0	0	0	0	0
DAYS		0	0	0	0	0	0	0	0	0	0	0	0	0	0	0
OIL		0	0	0	0	0	0	0	0	0	0	0	0	0	0	0
WATER		0	0	0	0	0	0	0	0	0	0	0	0	0	0	0
GAS		224	185	205	172	47	4	0	241	545	674	660	672	3629	3057123	330
79 FLOW		1	1	1	1	1	1	1	1	1	1	1	1			
LIFT		0	0	0	0	0	0	0	0	0	0	0	0	0	0	0
DAYS		0	0	0	0	0	0	0	0	0	0	0	0	0	0	0
OIL		0	0	0	0	0	0	0	0	0	0	0	0	0	0	0
WATER		0	0	0	0	0	0	0	0	0	0	0	0	0	0	0
GAS		535	436	473	340	253	134	200	393	1136	567	395	340	5202	3062325	434
80 FLOW		1	1	1	1	1	1	1	1	1	1	1	1			
LIFT		0	0	0	0	0	0	0	0	0	0	0	0	0	0	0
DAYS		0	0	0	0	0	0	0	0	0	0	0	0	0	0	0
OIL		0	0	0	0	0	0	0	0	0	0	0	0	0	0	0
WATER		0	0	0	0	0	0	0	0	0	0	0	0	0	0	0
GAS		465	414	396	229	982	701	846	1070	914	717	948	902	6584	3070909	715
81 FLOW		1	1	1	1	1	1	1	1	1	1	1	1			
LIFT		0	0	0	0	0	0	0	0	0	0	0	0	0	0	0
DAYS		0	0	0	0	0	0	0	0	0	0	0	0	0	0	0
OIL		0	0	0	0	0	0	0	0	0	0	0	0	0	0	0
WATER		0	0	0	0	0	0	0	0	0	0	0	0	0	0	0
GAS		846	589	622	337	321	293	293	215	485	789	872	899	6561	3077470	547



IMIGHTS ENERGY SYSTEM RUN DATE 8/22/83 TIME 09:13:14

PAGE 2

LEASE NAME HAUFELD LOCATION 210233 JTE IMIGHTS ID # 302233721000T FIELD - JALANI TMSILL Y1 7 RWS (PRO GAS) Y1 PRODUCTION UNIT # - 53115

WELL 1 OPER BURESON LEWIS B INC 1ST PRODUCTION 0/00/00 CIME DATES - LIQUID 0/69/12 CIME - LIQUID 0 LIQ GATHERER 2964549 GAS GATHERER EL PASO NATURAL GAS COMPANY

SELECTION FROM TO 70-85

TEST DATA

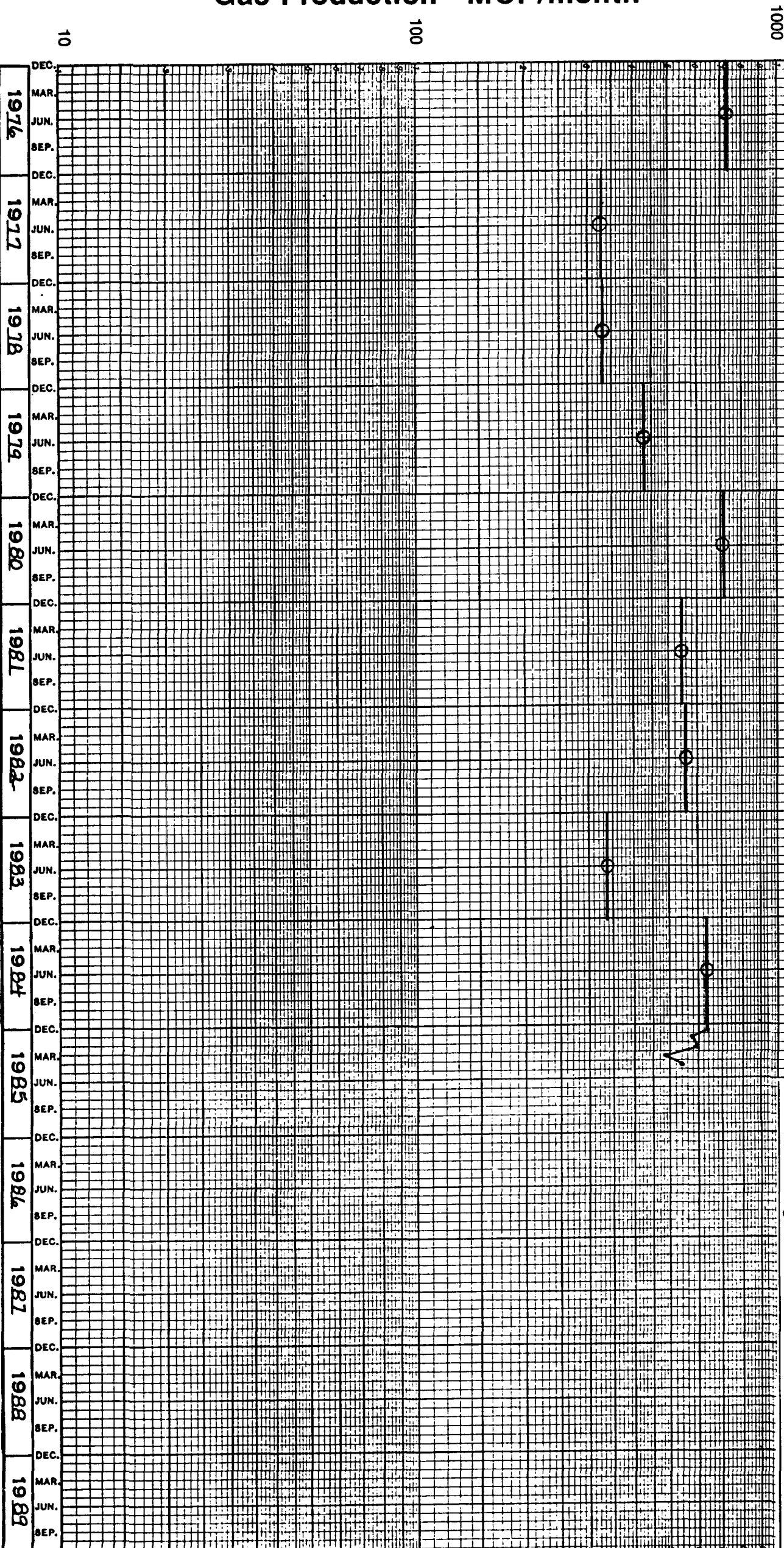
TEST DATE	WELLHEAD S/I PRESS	ROT HOLE PRESSURE	Z-FACTOR	P/Z	TEST DATE	GAS CIME
70/06/29	254	272	.962	285	2,969,792	
71/09/08	270	290	.959	302	2,981,476	
72/07/03	234	251	.964	260	2,991,007	
73/05/15	235	252	.964	261	3,000,454	
74/05/03	236	253	.964	262	3,014,640	
75/05/06	188	201	.971	207	3,033,662	
76/04/27	233	250	.965	259	3,043,711	
76/05/02	94	101	.986	102	3,054,283	
79/04/24	119	127	.982	129	3,058,839	
80/04/15	57	61	.991	62	3,063,715	
81/07/01	13	14	.998	14	3,073,926	
81/10/15	13	14	.998	14	3,075,292	



Gas Production - MCF/month

Cum: \_\_\_\_\_

Field: TALMAT (GAS)  
Operator: LEWIS B. BURLERSON, INC.  
Well: HADFIELD No. 1  
Location: O-21-255-37E  
County: LEA State: NM  
Date Prod. Began: \_\_\_\_\_ Acres: \_\_\_\_\_



DAT120M2  
DOWLE HARTMAN, OIL OPERATOR  
DOWLETS ENERGY DATA SYSTEM

RUN DATE 8/22/85 TIME 09:57:41

PAGE 6

LEASE NAME HAWFIELD

LOCATION 21P225 37E

DOWLETS ID # 3022537E21P00T FIELD - JALMNT TMSILL Y7 7 RWS (PRD GAS) Y7 PRODUCTION UNIT # - 53115

WELL 2  
OVER BARLSON LEWIS B INC

CUM DATE - LIQUID 0/69/12 CUMES - LIQUID 0 LIO GATHERER

08014 GAS GATHERER EL PASO NATURAL GAS COMPANY

SELECTION  
FROM-10  
70-85

1ST PRODUCTION 0/00/00

GAS 0/69/12

08014 GAS GATHERER EL PASO NATURAL GAS COMPANY

PRODUCTION DATA

YR NR WELLS PROD	JAN	FEB	MAR	APR	MAY	JUN	JUL	AUG	SEP	OCT	NOV	DEC	YTD	1TD	AVG
70 FLOW LIFT	1	1	1	0	0	0	0	0	1	0	0	0	0	0	0
DAYS	0	0	0	0	0	0	0	0	0	0	0	0	0	0	0
OIL	0	0	0	0	0	0	0	0	0	0	0	0	0	0	0
WATER	0	0	0	0	0	0	0	0	0	0	0	0	0	0	0
GAS	52	104	63	0	0	0	0	0	18	0	0	0	237	81051	59
77 FLOW LIFT	0	0	0	0	1	1	1	1	1	1	1	1	1	1	1
DAYS	0	0	0	0	0	0	0	0	0	0	0	0	0	0	0
OIL	0	0	0	0	0	0	0	0	0	0	0	0	0	0	0
WATER	0	0	0	0	0	0	0	0	0	0	0	0	0	0	0
GAS	0	0	0	0	104	204	156	167	141	187	182	178	1319	82370	165
78 FLOW LIFT	1	1	1	1	1	1	1	1	1	1	1	1	1	1	1
DAYS	0	0	0	0	0	0	0	0	0	0	0	0	0	0	0
OIL	0	0	0	0	0	0	0	0	0	0	0	0	0	0	0
WATER	0	0	0	0	0	0	0	0	0	0	0	0	0	0	0
GAS	163	152	169	166	157	124	71	161	145	168	153	155	1784	84154	149
79 FLOW LIFT	1	1	1	1	1	1	1	1	1	1	1	1	1	1	1
DAYS	0	0	0	0	0	0	0	0	0	0	0	0	0	0	0
OIL	0	0	0	0	0	0	0	0	0	0	0	0	0	0	0
WATER	0	0	0	0	0	0	0	0	0	0	0	0	0	0	0
GAS	132	132	181	159	160	106	134	117	97	87	84	76	1485	85639	124
80 FLOW LIFT	1	1	1	1	1	1	1	1	1	1	1	1	1	1	1
DAYS	0	0	0	0	0	0	0	0	0	0	0	0	0	0	0
OIL	0	0	0	0	0	0	0	0	0	0	0	0	0	0	0
WATER	0	0	0	0	0	0	0	0	0	0	0	0	0	0	0
GAS	73	73	86	73	106	104	53	59	59	57	70	82	897	86536	75
81 FLOW LIFT	1	1	1	1	1	1	1	1	1	1	1	1	1	1	1
DAYS	0	0	0	0	0	0	0	0	0	0	0	0	0	0	0
OIL	0	0	0	0	0	0	0	0	0	0	0	0	0	0	0
WATER	0	0	0	0	0	0	0	0	0	0	0	0	0	0	0
GAS	70	34	14	33	10	7	0	0	9	0	29	53	259	86775	29

DATE: 12/02/02  
DOWLE HARTMAN, OIL OPERATOR

WRIGHTS ENERGY DATA SYSTEM RUN DATE 8/22/85 TIME 09:57:41

PAGE 7

LEASE NAME: HARTFIELD

LOCATION: ZIP226 JTE

WRIGHTS ID # 302253721POOT FIELD - JALPAT TMSILL YR 7 RWS (PRO GAS) YR

PRODUCTION UNIT # - 53115

WELL # 2

DATE DATES - LIQUID 0/69/12

0 LIO GATHERER

80814 GAS GATHERER EL PASO NATURAL GAS COMPANY

OPER: BURESSON LEWIS B INC

1ST PRODUCTION 0/00/00

GAS 0/69/12

GAS

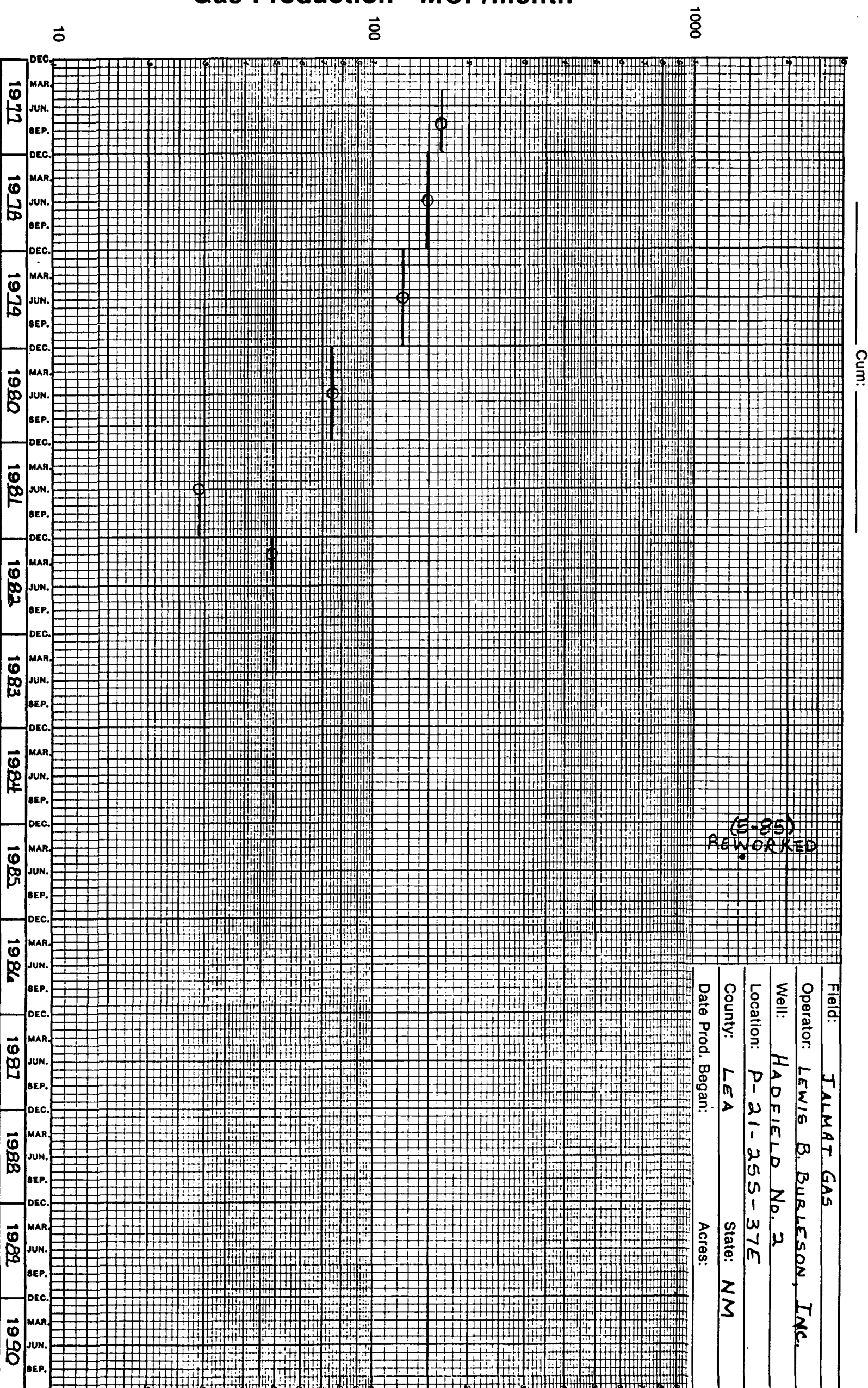
SELECTION FROM 10 70-85

PRODUCTION DATA

YR	HR	WELLS	PROD	JAN	FEB	MAR	APR	MAY	JUN	JUL	AUG	SEP	OCT	NOV	DEC	YTD	ITD	AVG
82	FLUM			1	1	1	1	0	0	0	0	0	0	0	0			
	LIFT			0	0	0	0	0	0	0	0	0	0	0	0			
	DAYS			0	0	0	0	0	0	0	0	0	0	0	0		0	0
	OIL			0	0	0	0	0	0	0	0	0	0	0	0		0	0
	WATER			0	0	0	0	0	0	0	0	0	0	0	0		0	0
	GAS			49	47	56	42	0	0	0	0	0	0	0	0	194	86989	49
85	FLUM			0	0	0	0	1	0	0	0	0	0	0	0			
	LIFT			0	0	0	0	0	0	0	0	0	0	0	0			
	DAYS			0	0	0	0	0	0	0	0	0	0	0	0		0	0
	OIL			0	0	0	0	0	0	0	0	0	0	0	0		0	0
	WATER			0	0	0	0	0	0	0	0	0	0	0	0		0	0
	GAS			0	0	0	0	1449	0	0	0	0	0	0	0	1449	88438	1449



Gas Production - MCF/month



DW112042  
NOTLE HARTMAN, OIL OPERATOR  
DUGHTS ENERGY DATA SYSTEM

RUN DATE 8/22/83 TIME 10:00:59

PAGE 1

LEASE NAME STUART

LOCATION 222235 JTE

DUGHTS ID # 302235JTE220911T FIELD - JALANI TMSILL Y1 7 RAPS (PROD GAS) Y1 PRODUCTION UNIT # - 52410

WELL  
OPER BURELSON & LIFT

DATE DATES - LIQUID 0/6/9/12 DATES - LIQUID 0 LIQ GATHERER 1306372 GAS GATHERER EL PASO NATURAL GAS COMPANY

SELECTION  
FROM-10  
70-85

PRODUCTION DATA

YR NR WELLS PROD	JAN	FEB	MAR	APR	MAY	JUN	JUL	AUG	SEP	OCT	NOV	DEC	YTD	ITD	AVG
70 FLOW	1	1	1	1	1	1	1	1	1	1	1	1			
LIFT	0	0	0	0	0	0	0	0	0	0	0	0			
DAYS	0	0	0	0	0	0	0	0	0	0	0	0			0
OIL	0	0	0	0	0	0	0	0	0	0	0	0			0
WATER	0	0	0	0	0	0	0	0	0	0	0	0			0
GAS	2357	2836	54	32	6610	4621	2754	3388	5260	4591	4171	3595	40669	1347041	3389
71 FLOW	1	1	1	1	1	1	1	1	1	1	1	1			
LIFT	0	0	0	0	0	0	0	0	0	0	0	0			0
DAYS	0	0	0	0	0	0	0	0	0	0	0	0			0
OIL	0	0	0	0	0	0	0	0	0	0	0	0			0
WATER	0	0	0	0	0	0	0	0	0	0	0	0			0
GAS	3482	4401	2932	2950	1418	73	2293	2489	2203	2757	2466	449	28113	1375154	2343
72 FLOW	1	1	1	1	1	1	1	1	1	1	1	1			
LIFT	0	0	0	0	0	0	0	0	0	0	0	0			0
DAYS	0	0	0	0	0	0	0	0	0	0	0	0			0
OIL	0	0	0	0	0	0	0	0	0	0	0	0			0
WATER	0	0	0	0	0	0	0	0	0	0	0	0			0
GAS	4248	3183	4270	8013	7786	5929	3424	2844	2857	1742	0	0	44296	1419450	4430
73 FLOW	1	1	1	1	1	1	1	1	1	1	1	1			
LIFT	0	0	0	0	0	0	0	0	0	0	0	0			0
DAYS	0	0	0	0	0	0	0	0	0	0	0	0			0
OIL	0	0	0	0	0	0	0	0	0	0	0	0			0
WATER	0	0	0	0	0	0	0	0	0	0	0	0			0
GAS	794	1376	1513	1450	1143	1338	1320	1075	1048	1375	1277	1403	15112	1434562	1259
74 FLOW	1	1	1	1	1	1	1	1	1	1	1	1			
LIFT	0	0	0	0	0	0	0	0	0	0	0	0			0
DAYS	0	0	0	0	0	0	0	0	0	0	0	0			0
OIL	0	0	0	0	0	0	0	0	0	0	0	0			0
WATER	0	0	0	0	0	0	0	0	0	0	0	0			0
GAS	1457	1331	1485	0	222	0	0	0	0	0	0	0	4495	1439057	1124

DWIGHTS ENERGY SYSTEM RUN DATE 8/22/85 TIME 10:00:59

PAGE 1

LEASE NAME STUART LOCATION 22C25 SITE DWIGHTS ID # 30225STEZP1YT FIELD - JALANI TMSILL VT 7 RWS (PRO GAS) VT PRODUCTION UNIT # - 52410

WELL 2 OPER BARNESON & HUFF

SELECTION FROM-TO

70-85

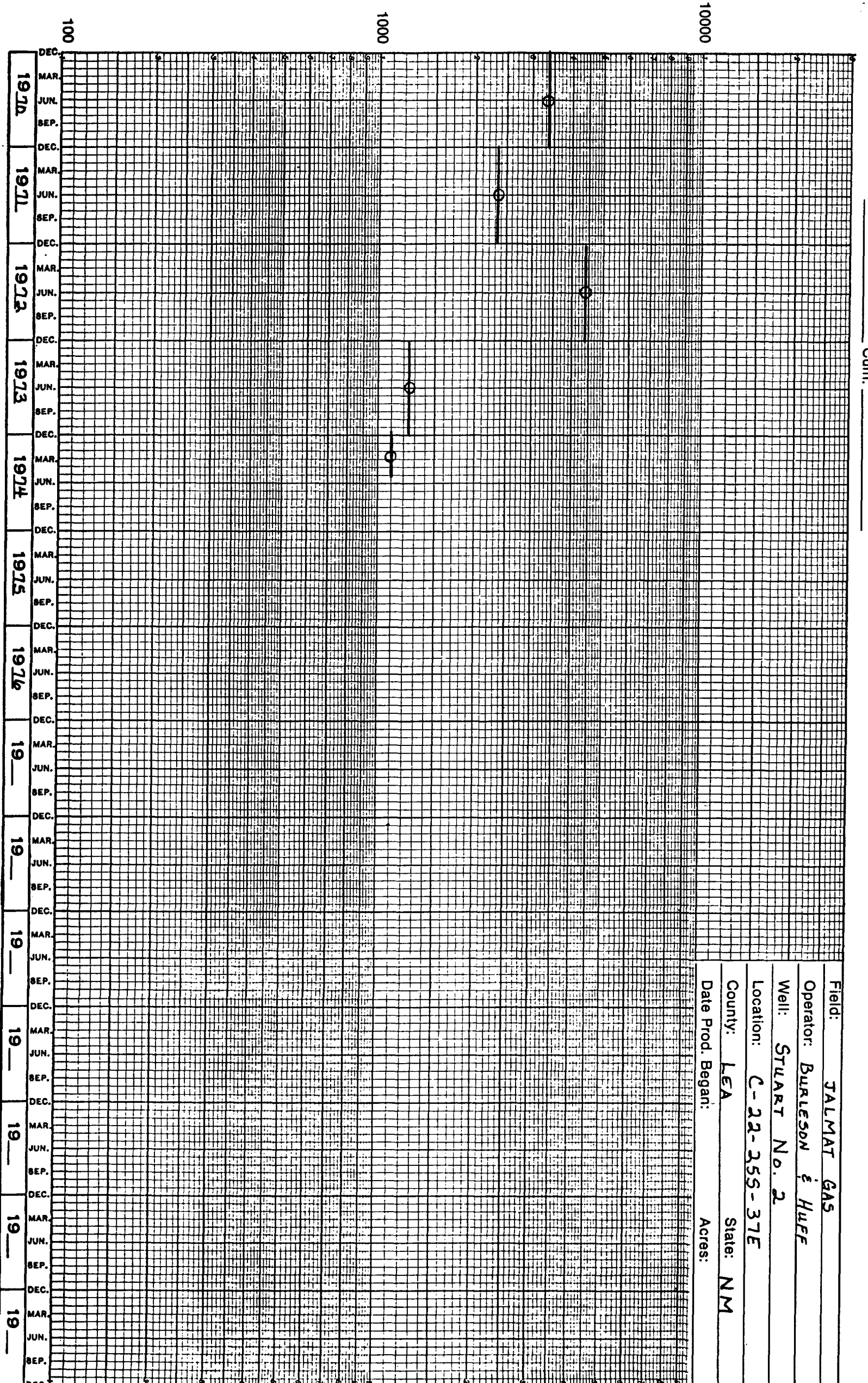
CUM DATES - LIQUID 0/69/12 CUMES - LIQUID 0 LID GATHERER 1306372 GAS GATHERER EL PASO NATURAL GAS COMPANY

TEST DATA

TEST DATE	WELLHEAD S/I PRESS	BOI HOLE PRESSURE	Z-FACTOR	P/Z	TEST DATE GAS CUM
70/06/79	163	0	.000	0	1,322,928
71/09/08	238	0	.000	0	1,367,867
72/07/03	111	0	.000	0	1,408,914
73/05/15	156	0	.000	0	1,425,136
74/05/03	143	0	.000	0	1,439,856



Gas Production - MCF/month



Cum: \_\_\_\_\_

Field:	TALMAT GAS
Operator:	BURLESON & HUFF
Well:	STUART No. 2
Location:	C-22-255-37E
County:	LEA
Date Prod. Began:	State: NM
	Acres:



LEASE NAME TERESA FEDERAL LOCATION 224235 37E DOWLE ID # 302235722000T FIELD - JALMAT TANKILL VT 7 RWGS (PROD GAS) VT PRODUCTION UNIT # - 68732

WELL 2 OPER ANTELL MORRIS R 1ST PRODUCTION 0/05/82 CURR DATES - LIQUID 0/00/00 GASES - LIQUID 0/00/00 0 LIG GATHERER 0 GAS GATHERER EL PASO NATURAL GAS COMPANY

SELECTION FROM-10 TO-85

PRODUCTION DATA

YR NR WELLS PROD	JAN	FEB	MAR	APR	MAY	JUN	JUL	AUG	SEP	OCT	NOV	DEC	YTD	ITD	AVG
82 FLOW	0	0	0	0	1	1	1	1	1	1	1	1			
LIFT	0	0	0	0	0	0	0	0	0	0	0	0			
DAYS	0	0	0	0	0	0	0	0	0	0	0	0	0	0	0
OIL	0	0	0	0	0	0	0	0	0	0	0	0	0	0	0
WATER	0	0	0	0	0	0	0	0	0	0	0	0	0	0	0
GAS	0	0	0	0	6042	5590	5310	5087	4745	4820	4478	4631	40703	40703	5088
83 FLOW	1	1	1	1	1	1	1	1	1	1	1	1			
LIFT	0	0	0	0	0	0	0	0	0	0	0	0			
DAYS	30	28	31	27	31	30	31	31	30	31	14	31	345	0	29
OIL	0	0	0	0	0	0	0	0	0	0	0	0	0	0	0
WATER	0	0	0	0	0	0	0	0	0	0	0	0	0	0	0
GAS	4556	3975	4494	4104	4238	4170	3961	3673	2511	4484	2043	2113	44342	85045	3695
84 FLOW	1	1	1	1	1	1	1	0	1	1	1	1			
LIFT	0	0	0	0	0	0	0	0	0	0	0	0			
DAYS	25	11	31	27	31	30	24	0	6	26	29	31	271	0	25
OIL	0	0	0	0	0	0	0	0	0	0	0	0	0	0	0
WATER	0	0	0	0	0	0	0	0	0	0	0	0	0	0	0
GAS	2158	1193	5625	4565	4701	4052	3160	0	750	3470	3185	4114	36973	122018	3361
85 FLOW	1	1	1	1	1	0	0	0	0	0	0	0			
LIFT	0	0	0	0	0	0	0	0	0	0	0	0			
DAYS	31	28	31	24	31	0	0	0	0	0	0	0	145	0	29
OIL	0	0	0	0	0	0	0	0	0	0	0	0	0	0	0
WATER	0	0	0	0	0	0	0	0	0	0	0	0	0	0	0
GAS	3822	3697	3891	3603	4391	0	0	0	0	0	0	0	19404	141422	3881

IMIGHTS ENERGY SYSTEM RUN DATE 8/22/85 TIME 09:57:41

PAGE 5

LEASE NAME TESSA FEDERAL LOCATION ZN2255 STE IMIGHTS ID # 3022557E22N001T FIELD - JUVAT TANKILL YT 7 ROPS (PRO GAS) YT PRODUCTION UNIT # - 68752

WELL 2 OPER ANTRELL MORRIS R

1ST PRODUCTION 0/05/82

DATE DATES - LIQUID 0/00/00 CUMES - LIQUID 0 LIG GATHERER 0 GAS GATHERER EL PASO NATURAL GAS COMPANY

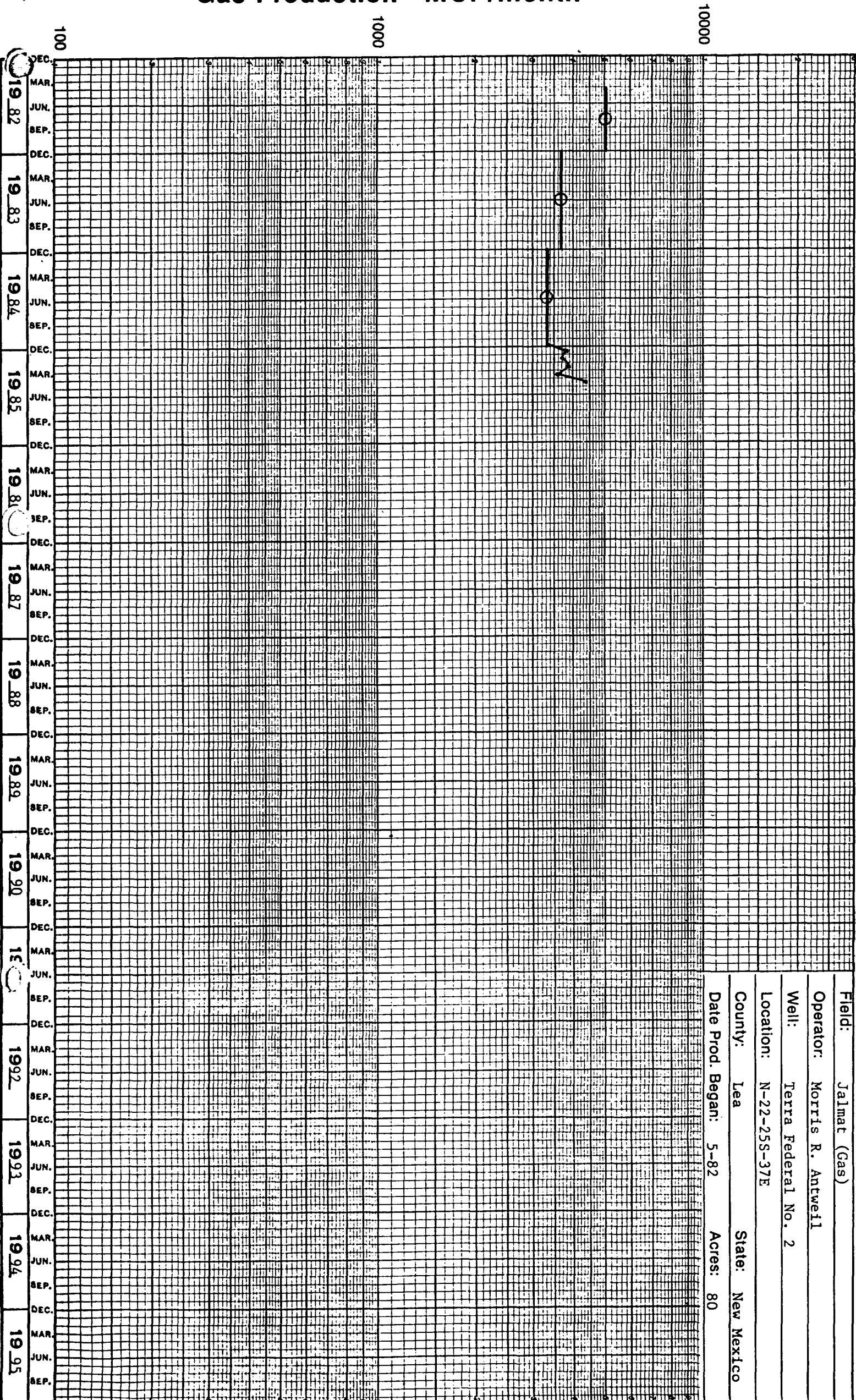
SELECTION FROM TO 70-85

TEST DATA

WELLHEAD	BOT HOLE	Z-FACTOR	P/Z	TEST DATE
TEST DATE 8/1 PRESS	PRESSURE			GAS CUM
83/04/05	56	0	.000	0
				54,432

Gas Production - MCF/month

Cum:



Field: Jalmat (Gas)

Operator: Morris R. Antweil

Well: Terra Federal No. 2

Location: N-22-25S-37E

County: Lea State: New Mexico

Date Prod. Began: 5-82 Acres: 80

WRIGHTS ENERGY SYSTEM RUN DATE: 8/22/85 TIME: 09:15:141

LEASE NAME: CARLSBOM FEDERAL WELL 1 OPER EL PASO NATURAL GAS CO LOCATION: 224259 JTE WRIGHTS ID # 302235722.00YT FIELD - JALPAT TMSILL YT 7 RWS (PRO GAS) YT PRODUCTION UNIT # - 52120  
SELECTION FROM: 70-85 1ST PRODUCTION: 0/00/00 CUMES DATES - LIQUID GAS 0/6/9/12 CUMES - LIQUID GAS 3913615 GAS GATHERER EL PASO NATURAL GAS COMPANY

PRODUCTION DATA

YR NR WELLS PROD	JAN	FEB	MAR	APR	MAY	JUN	JUL	AUG	SEP	OCT	NOV	DEC	YTD	ITD	AVG
70 FLOW	1	1	1	1	1	1	1	1	1	1	1	1			
LIFT	0	0	0	0	0	0	0	0	0	0	0	0			
DAYS	0	0	0	0	0	0	0	0	0	0	0	0			
OIL	0	0	0	0	0	0	0	0	0	0	0	0			
WATER	0	0	0	0	0	0	0	0	0	0	0	0			
GAS	3243	3706	3941	3243	3564	2529	3144	3381	3381	3020	3054	2898	37204	3952819	3267
71 FLOW	1	1	1	1	1	1	1	1	1	1	1	1			
LIFT	0	0	0	0	0	0	0	0	0	0	0	0			
DAYS	0	0	0	0	0	0	0	0	0	0	0	0			
OIL	0	0	0	0	0	0	0	0	0	0	0	0			
WATER	0	0	0	0	0	0	0	0	0	0	0	0			
GAS	3324	2985	3448	3081	3263	2205	2139	2828	2998	2000	2558	3543	34372	3987191	2864
72 FLOW	1	1	1	1	1	1	1	1	1	1	1	1			
LIFT	0	0	0	0	0	0	0	0	0	0	0	0			
DAYS	0	0	0	0	0	0	0	0	0	0	0	0			
OIL	0	0	0	0	0	0	0	0	0	0	0	0			
WATER	0	0	0	0	0	0	0	0	0	0	0	0			
GAS	3586	3535	3137	3726	3225	2821	2541	2498	2114	1936	1783	2069	32969	4020160	2747
73 FLOW	1	1	1	1	1	1	1	1	1	1	1	1			
LIFT	0	0	0	0	0	0	0	0	0	0	0	0			
DAYS	0	0	0	0	0	0	0	0	0	0	0	0			
OIL	0	0	0	0	0	0	0	0	0	0	0	0			
WATER	0	0	0	0	0	0	0	0	0	0	0	0			
GAS	1959	1830	2117	1227	1241	1560	1395	1120	950	1152	1202	1555	17308	4037468	1442
74 FLOW	1	1	1	1	1	1	1	1	1	1	1	1			
LIFT	0	0	0	0	0	0	0	0	0	0	0	0			
DAYS	0	0	0	0	0	0	0	0	0	0	0	0			
OIL	0	0	0	0	0	0	0	0	0	0	0	0			
WATER	0	0	0	0	0	0	0	0	0	0	0	0			
GAS	1172	981	1382	1386	901	1031	1051	759	871	965	1773	9324	21596	4059064	1800
75 FLOW	1	1	1	1	1	1	1	1	1	1	1	1			
LIFT	0	0	0	0	0	0	0	0	0	0	0	0			
DAYS	0	0	0	0	0	0	0	0	0	0	0	0			
OIL	0	0	0	0	0	0	0	0	0	0	0	0			
WATER	0	0	0	0	0	0	0	0	0	0	0	0			
GAS	9355	7461	8923	7168	5570	6098	3912	4982	6076	6319	4938	5045	75847	4134911	6321

LEASE NAME CARLSON FEDERAL LOCATION 22.25S 37E DAUGHTS ID # 30225STE22.00YT FIELD - JALWAT TANGILL YT 7 RWS (PRO GAS) YT PRODUCTION UNIT # - 52120

WELL 1  
OPER EL PASO NATURAL GAS CO

1ST PRODUCTION 0/00/00

DATE DATES - LIQUID 0/69/12 CUMES - LIQUID 0 LIO GATHERER  
GAS 0/69/12 GAS 3913615 GAS GATHERER EL PASO NATURAL GAS COMPANY

SELECTION  
FROM-TO  
70-85

PRODUCTION DATA

YR NR WELLS PROD	JAN	FEB	MAR	APR	MAY	JUN	JUL	AUG	SEP	OCT	NOV	DEC	YTD	ITD	AVG
76 FLOW	1	1	1	1	1	1	1	1	1	1	1	1			
LIFT	0	0	0	0	0	0	0	0	0	0	0	0			
DAYS	0	0	0	0	0	0	0	0	0	0	0	0			0
OIL	0	0	0	0	0	0	0	0	0	0	0	0			0
WATER	0	0	0	0	0	0	0	0	0	0	0	0			0
GAS	5395	1937	2397	2157	2425	1785	10661	7647	13552	13026	11613	11153	83748	4218659	6979
77 FLOW	1	1	1	1	1	1	1	1	1	1	1	1			
LIFT	0	0	0	0	0	0	0	0	0	0	0	0			0
DAYS	0	0	0	0	0	0	0	0	0	0	0	0			0
OIL	0	0	0	0	0	0	0	0	0	0	0	0			0
WATER	0	0	0	0	0	0	0	0	0	0	0	0			0
GAS	10095	9966	10523	4479	1981	2434	3443	3256	4288	6615	6786	6643	70489	4289148	5874
78 FLOW	1	1	1	1	1	1	1	1	1	1	1	1			
LIFT	0	0	0	0	0	0	0	0	0	0	0	0			0
DAYS	0	0	0	0	0	0	0	0	0	0	0	0			0
OIL	0	0	0	0	0	0	0	0	0	0	0	0			0
WATER	0	0	0	0	0	0	0	0	0	0	0	0			0
GAS	6812	5654	6907	6028	4874	3235	4007	6305	7063	7921	7182	6821	72809	4361957	6067
79 FLOW	1	1	1	1	1	1	1	1	1	1	1	1			
LIFT	0	0	0	0	0	0	0	0	0	0	0	0			0
DAYS	0	0	0	0	0	0	0	0	0	0	0	0			0
OIL	0	0	0	0	0	0	0	0	0	0	0	0			0
WATER	0	0	0	0	0	0	0	0	0	0	0	0			0
GAS	6547	6248	6894	7663	7364	5222	7660	5311	5125	6814	6385	4762	76195	4438152	6350
80 FLOW	1	1	1	1	1	1	1	1	1	1	1	1			
LIFT	0	0	0	0	0	0	0	0	0	0	0	0			0
DAYS	0	0	0	0	0	0	0	0	0	0	0	0			0
OIL	0	0	0	0	0	0	0	0	0	0	0	0			0
WATER	0	0	0	0	0	0	0	0	0	0	0	0			0
GAS	4403	3896	4896	4460	6293	6326	3531	7043	5898	6174	6108	6308	65156	4503308	5430
81 FLOW	1	1	1	1	1	1	1	1	1	1	1	1			
LIFT	0	0	0	0	0	0	0	0	0	0	0	0			0
DAYS	0	0	0	0	0	0	0	0	0	0	0	0			0
OIL	0	0	0	0	0	0	0	0	0	0	0	0			0
WATER	0	0	0	0	0	0	0	0	0	0	0	0			0
GAS	6104	3899	1644	5739	6022	5895	5829	5161	6198	5665	5680	5808	63864	4561712	5322

DATE 12/20/02  
DOYLE HARTMAN, OIL OPERATOR  
WRIGHTS ENERGY DATA SYSTEM RUN DATE 8/22/05 TIME 09:57:41  
PAGE 10  
LEASE NAME CARLSON FEDERAL  
WELL 1  
OPER EL PASO NATURAL GAS CO  
LOCATION 22,225 37E  
WRIGHTS ID # 3022537E22.00YT  
FIELD - JMWAT TMSILL Y7 7 RWGS (PRO GAS) Y7  
PRODUCTION UNIT # - 52320  
SELECTION FROM-TO 70-85  
1ST PRODUCTION 0/00/00  
CUM DATES - LIQUID 0/69/12  
CUMES - LIQUID GAS 3913615 GAS GATHERER EL PASO NATURAL GAS COMPANY  
CUM DATES - LIQUID GAS 0/69/12  
CUMES - LIQUID GAS 3913615 GAS GATHERER EL PASO NATURAL GAS COMPANY

		PRODUCTION DATA															
YR	NR WELLS	PROD	JAN	FEB	MAR	APR	MAY	JUN	JUL	AUG	SEP	OCT	NOV	DEC	YTD	ITD	AVG
82 FLOW	LIFT		1	1	1	1	1	1	1	1	0	1	1	1			
	DAYS		0	0	0	0	0	0	0	0	0	0	0	0	0		
	OIL		0	0	0	0	0	0	0	0	0	0	0	0	0	0	0
	WATER		0	0	0	0	0	0	0	0	0	0	0	0	0	0	0
	GAS		5751	4558	4985	4198	3379	3409	1844	268	0	264	1183	2356	32195	4599367	2927
83 FLOW	LIFT		1	0	1	1	1	1	1	1	1	1	1	1			
	DAYS		0	0	0	0	0	0	0	0	0	0	0	0	0		
	OIL		31	0	6	30	31	30	31	27	0	0	30	31	247	0	27
	WATER		0	0	0	0	0	0	0	0	0	0	0	0	0	0	0
	GAS		1596	0	946	4327	2782	1874	1796	141	0	484	19	13965	4613332	1552	
84 FLOW	LIFT		1	1	1	1	1	1	1	1	1	1	1	1			
	DAYS		0	0	0	0	0	0	0	0	0	0	0	0	0		
	OIL		31	29	24	20	14	5	19	31	30	31	30	31	295	0	25
	WATER		0	0	0	0	0	0	0	0	0	0	0	0	0	0	0
	GAS		155	251	165	686	559	17	95	7	393	1085	984	0	4397	4617729	400
85 FLOW	LIFT		1	1	1	1	1	0	0	0	0	0	0	0			
	DAYS		0	0	0	0	0	0	0	0	0	0	0	0	86	0	17
	OIL		11	21	31	22	1	0	0	0	0	0	0	0	0	0	0
	WATER		0	0	0	0	0	0	0	0	0	0	0	0	0	0	0
	GAS		68	0	0	147	44	0	0	0	0	0	0	0	259	4617988	86

DWIGHTS ENERGY SYSTEM RUN DATE 8/22/85 TIME 09:57:41

PAGE 4

LEASE NAME CARLSON FEDERAL LOCATION 22,225 JTE DWIGHTS ID # 30225JTE22.001T FIELD - JALMNT TMSILL VT 7 RARS (PRO GAS) VT PROPRATION UNIT # - 52320

WELL 1

OPER EL PASO NATURAL GAS CO

1ST PRODUCTION 0/00/00

CUM DATES - LIQUID 0/69/12 CUMES - LIQUID 0 LIQ GATHERER 3913615 GAS GATHERER EL PASO NATURAL GAS COMPANY

SELECTION FROM-10 70-85

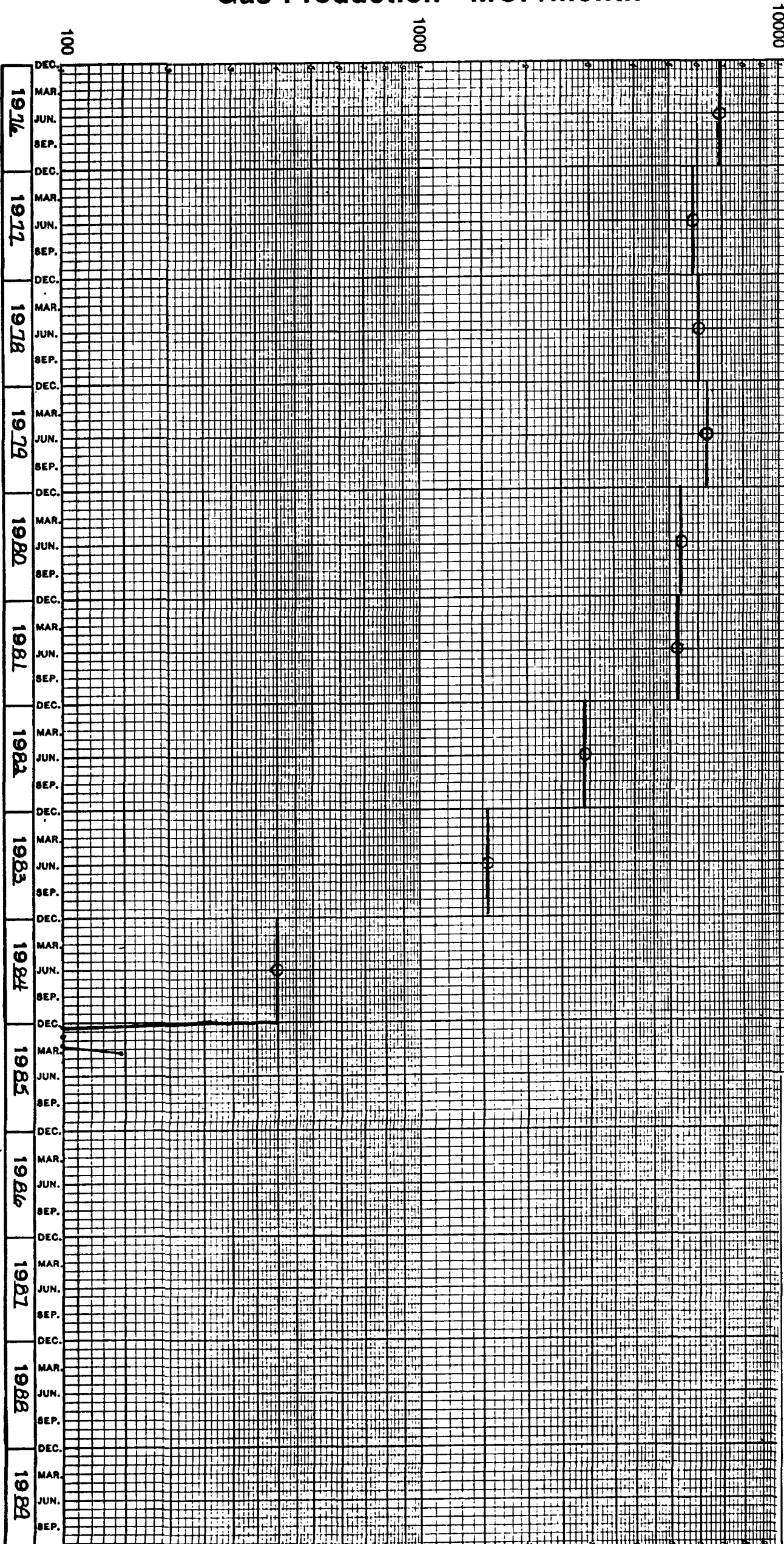
TEST DATA

TEST DATE	WELLHEAD 5/1 PRESS	BOT HOLE PRESSURE	Z-FACTOR	P/Z	TEST DATE GAS CUM
70/07/31	163	174	.976	178	3,933,941
71/08/06	166	177	.975	182	3,973,811
72/07/03	157	167	.977	171	4,007,465
73/05/01	163	174	.976	178	4,027,335
74/04/23	168	179	.975	184	4,042,066
75/04/22	137	146	.980	149	4,090,059
76/04/13	143	152	.979	155	4,145,775
77/05/10	106	113	.984	115	4,254,361
78/05/02	74	79	.989	80	4,314,863
79/06/20	77	82	.988	83	4,400,155
80/04/15	54	58	.992	58	4,453,577
81/03/24	87	93	.987	94	4,514,599
82/04/27	76	81	.989	82	4,586,244
83/04/05	79	84	.988	85	4,602,630

Gas Production - MCF/month

Cum: \_\_\_\_\_

Field: TALMAT GAS  
Operator: DOYLE HARTMAN  
Well: CARLSON FEDERAL No. 1  
Location: L-22-255-37E  
County: LEA State: NM  
Date Prod. Began: Acres:





LEASE NAME: HARTSEN  
WELL: 2  
OPER: ALPHA 21 PRODUCTION CO  
LOCATION: 270255 JYE  
DOWLE'S ID # 302255/270007  
FIELD - JALMUT TANSILL YT 7 RWS (PRO GAS) YT  
PROBATION UNIT # - 52341  
SELECTION: FROM-10 70-85  
1ST PRODUCTION: 0/00/00  
CUM. DATES - LIQUID: 0/69/12  
CUMES - LIQUID: 0  
GAS: 0/69/12  
GAS: 165973  
GAS GATHERER: EL PASO NATURAL GAS COMPANY

PRODUCTION DATA

YR NR WELLS PROD	JAN	FEB	MAR	APR	MAY	JUN	JUL	AUG	SEP	OCT	NOV	DEC	YTD	ITD	AVG
70 FLOW	1	1	1	1	1	1	1	1	1	1	1	1			
LIFT	0	0	0	0	0	0	0	0	0	0	0	0			
DAYS	0	0	0	0	0	0	0	0	0	0	0	0			
OIL	0	0	0	0	0	0	0	0	0	0	0	0			
WATER	0	0	0	0	0	0	0	0	0	0	0	0			
GAS	3753	3092	3301	2893	2730	2155	3214	2631	2113	2307	2391	2221	32801	1888774	2733
71 FLOW	1	1	1	1	1	1	1	1	1	1	1	1			
LIFT	0	0	0	0	0	0	0	0	0	0	0	0			
DAYS	0	0	0	0	0	0	0	0	0	0	0	0			
OIL	0	0	0	0	0	0	0	0	0	0	0	0			
WATER	0	0	0	0	0	0	0	0	0	0	0	0			
GAS	2060	1711	2326	2476	2661	2586	2563	2234	1859	2102	2339	2036	26953	1915727	2246
72 FLOW	1	1	1	1	1	1	1	1	1	1	1	1			
LIFT	0	0	0	0	0	0	0	0	0	0	0	0			
DAYS	0	0	0	0	0	0	0	0	0	0	0	0			
OIL	0	0	0	0	0	0	0	0	0	0	0	0			
WATER	0	0	0	0	0	0	0	0	0	0	0	0			
GAS	1851	1674	1665	2070	2048	1829	2055	2004	1881	1797	1630	1658	22162	1937889	1847
73 FLOW	1	1	1	1	1	1	1	1	1	1	1	1			
LIFT	0	0	0	0	0	0	0	0	0	0	0	0			
DAYS	0	0	0	0	0	0	0	0	0	0	0	0			
OIL	0	0	0	0	0	0	0	0	0	0	0	0			
WATER	0	0	0	0	0	0	0	0	0	0	0	0			
GAS	1590	1440	1615	1429	1949	1815	1793	1944	1740	1720	1601	1553	20189	1958078	1682
74 FLOW	1	1	1	1	1	1	1	1	1	1	1	1			
LIFT	0	0	0	0	0	0	0	0	0	0	0	0			
DAYS	0	0	0	0	0	0	0	0	0	0	0	0			
OIL	0	0	0	0	0	0	0	0	0	0	0	0			
WATER	0	0	0	0	0	0	0	0	0	0	0	0			
GAS	1444	1276	1450	1531	1862	1775	1262	1737	1785	1801	1622	1535	19080	1977158	1590
75 FLOW	1	1	1	1	1	1	1	1	1	1	1	1			
LIFT	0	0	0	0	0	0	0	0	0	0	0	0			
DAYS	0	0	0	0	0	0	0	0	0	0	0	0			
OIL	0	0	0	0	0	0	0	0	0	0	0	0			
WATER	0	0	0	0	0	0	0	0	0	0	0	0			
GAS	1476	1317	1406	1406	1795	1614	1706	1699	1606	1680	1507	1554	18766	1995924	1564

DATE: 12/04/2002  
WELL NAME: HARRISON  
WELL NO: 2  
LEASE NAME: HARRISON  
OPER: ALPHA 21 PRODUCTION CO  
LOCATION: 270225 3/E  
1ST PRODUCTION: 0/00/00  
DATE: 12/04/2002  
WELL NAME: HARRISON  
WELL NO: 2  
LEASE NAME: HARRISON  
OPER: ALPHA 21 PRODUCTION CO  
LOCATION: 270225 3/E  
1ST PRODUCTION: 0/00/00

PRODUCTION DATA

TR NO	WELLS	PROD	JAN	FEB	MAR	APR	MAY	JUN	JUL	AUG	SEP	OCT	NOV	DEC	YTD	ITD	AVG
76	FLDM		1	1	1	1	1	1	1	1	1	1	1	1			
	LIFT		0	0	0	0	0	0	0	0	0	0	0	0			
	DAYS		0	0	0	0	0	0	0	0	0	0	0	0			
	OIL		0	0	0	0	0	0	0	0	0	0	0	0			
	WATER		0	0	0	0	0	0	0	0	0	0	0	0			
	GAS		1515	1406	1517	1662	1939	1775	1748	1688	1533	1495	1440	1434	19152	2015076	1596
77	FLDM		1	1	1	1	1	1	1	1	1	1	1	1			
	LIFT		0	0	0	0	0	0	0	0	0	0	0	0			
	DAYS		0	0	0	0	0	0	0	0	0	0	0	0			
	OIL		0	0	0	0	0	0	0	0	0	0	0	0			
	WATER		0	0	0	0	0	0	0	0	0	0	0	0			
	GAS		1339	1324	1410	1329	1665	1712	1683	1866	1670	2994	2549	2411	23952	2039028	1996
78	FLDM		1	1	1	1	1	1	1	1	1	1	1	1			
	LIFT		0	0	0	0	0	0	0	0	0	0	0	0			
	DAYS		0	0	0	0	0	0	0	0	0	0	0	0			
	OIL		0	0	0	0	0	0	0	0	0	0	0	0			
	WATER		0	0	0	0	0	0	0	0	0	0	0	0			
	GAS		2160	1887	2036	2158	2497	2144	2187	1850	1614	1665	1590	1485	22273	2062301	1939
79	FLDM		1	1	1	1	1	1	1	1	1	1	1	1			
	LIFT		0	0	0	0	0	0	0	0	0	0	0	0			
	DAYS		0	0	0	0	0	0	0	0	0	0	0	0			
	OIL		0	0	0	0	0	0	0	0	0	0	0	0			
	WATER		0	0	0	0	0	0	0	0	0	0	0	0			
	GAS		1508	1300	1034	910	969	932	863	794	861	879	842	877	11769	2074070	981
80	FLDM		1	1	1	1	1	1	1	1	1	1	1	1			
	LIFT		0	0	0	0	0	0	0	0	0	0	0	0			
	DAYS		0	0	0	0	0	0	0	0	0	0	0	0			
	OIL		0	0	0	0	0	0	0	0	0	0	0	0			
	WATER		0	0	0	0	0	0	0	0	0	0	0	0			
	GAS		921	754	845	1021	1005	965	900	830	675	824	863	653	10256	2084326	835
81	FLDM		1	1	1	1	1	1	1	1	1	1	1	1			
	LIFT		0	0	0	0	0	0	0	0	0	0	0	0			
	DAYS		0	0	0	0	0	0	0	0	0	0	0	0			
	OIL		0	0	0	0	0	0	0	0	0	0	0	0			
	WATER		0	0	0	0	0	0	0	0	0	0	0	0			
	GAS		441	1285	769	591	641	700	701	898	460	319	130	19	7154	2091480	596

LEASE NAME HARRISON  
WELL 2  
OPER ALPRA 21 PRODUCTION CO  
LOCATION 270225 JTE  
DOWLE'S ID # 30225JTE21000T  
FIELD - JALPAT TANGILL Y7 7 RWS (PRO GAS) Y7  
PRODUCTION UNIT # - 52341  
SELECTION FROM-TO 70-85  
1ST PRODUCTION 0/00/00  
CUM DATES - LIQUID 0/68/12  
CUMES - LIQUID 0  
GAS 0/68/12  
GAS 1825973  
LTD GATHERER  
GAS GATHERER EL PASO NATURAL GAS COMPANY

PRODUCTION DATA

YR NR WELLS FROM	JAN	FEB	MAR	APR	MAY	JUN	JUL	AUG	SEP	OCT	NOV	DEC	YTD	1TD	AVG
82 FLOW	1	1	1	1	1	1	1	1	1	1	1	1			
LIFT	0	0	0	0	0	0	0	0	0	0	0	0			
DAYS	0	0	0	0	0	0	0	0	0	0	0	0	0	0	0
OIL	0	0	0	0	0	0	0	0	0	0	0	0	0	0	0
WATER	0	0	0	0	0	0	0	0	0	0	0	0	0	0	0
GAS	158	56	67	67	113	231	244	194	184	165	192	182	1853	2093333	154
83 FLOW	1	1	1	1	1	1	1	1	1	1	1	1			
LIFT	0	0	0	0	0	0	0	0	0	0	0	0			
DAYS	31	28	31	30	31	30	31	31	30	31	30	31	365	0	30
OIL	0	0	0	0	0	0	0	0	0	0	0	0	0	0	0
WATER	0	0	0	0	0	0	0	0	0	0	0	0	0	0	0
GAS	173	74	12	42	139	47	34	11	36	34	137	394	1133	2094466	94
84 FLOW	1	1	1	1	1	1	1	1	1	1	1	1			
LIFT	0	0	0	0	0	0	0	0	0	0	0	0			
DAYS	31	29	31	30	31	2	31	31	30	31	30	31	338	0	28
OIL	0	0	0	0	0	0	0	0	0	0	0	0	0	0	0
WATER	0	0	0	0	0	0	0	0	0	0	0	0	0	0	0
GAS	423	236	205	126	125	45	128	93	132	163	159	172	2007	2096473	167
85 FLOW	1	1	1	1	1	0	0	0	0	0	0	0			
LIFT	0	0	0	0	0	0	0	0	0	0	0	0			
DAYS	30	28	31	27	31	0	0	0	0	0	0	0	147	0	29
OIL	0	0	0	0	0	0	0	0	0	0	0	0	0	0	0
WATER	0	0	0	0	0	0	0	0	0	0	0	0	0	0	0
GAS	132	143	128	132	158	0	0	0	0	0	0	0	693	2097166	139

DWIGHTS ENERGY SYSTEM

RUN DATE 8/22/85 TIME 10:00:59

PAGE 2

LEASE NAME HARRISON

WELL 2

OPER ALPHA 21 PRODUCTION CO

LOCATION 270225 JTE

DWIGHTS ID # 3022537E27000T

FIELD - JALANI TMSILL YF 7 RWS (PRO GAS) YF

PROBATION UNIT # - 52241

SELECTION

FROM TO

70-85

1ST PRODUCTION

0/00/00

DATE DATES - LIQUID

0/69/12

DATE DATES - LIQUID

0/69/12

DATE DATES - LIQUID

0/69/12

0 LTO GATHERER

1859773 GAS GATHERER EL PASO NATURAL GAS COMPANY

TEST DATA

TEST DATE	WELLHEAD S/L PRESS	DOT HOLE PRESSURE	Z-FACTOR	P/Z	TEST DATE GAS C/D
70/06/29	174	186	.973	191	1,873,825
71/09/08	164	175	.975	179	1,907,887
72/06/19	155	166	.976	170	1,926,193
73/05/01	158	169	.976	173	1,944,026
74/04/23	146	156	.978	160	1,963,422
75/04/22	133	142	.980	145	1,982,388
76/04/13	127	136	.980	139	2,001,082
77/05/10	112	120	.983	122	2,021,015
78/04/25	123	131	.981	134	2,046,909
79/06/12	108	115	.983	117	2,068,395
80/04/08	108	115	.983	117	2,076,862
81/03/24	107	114	.984	116	2,086,847

## Gas Production - MCF/month

**Cum:**

Field: JALMAT GAS

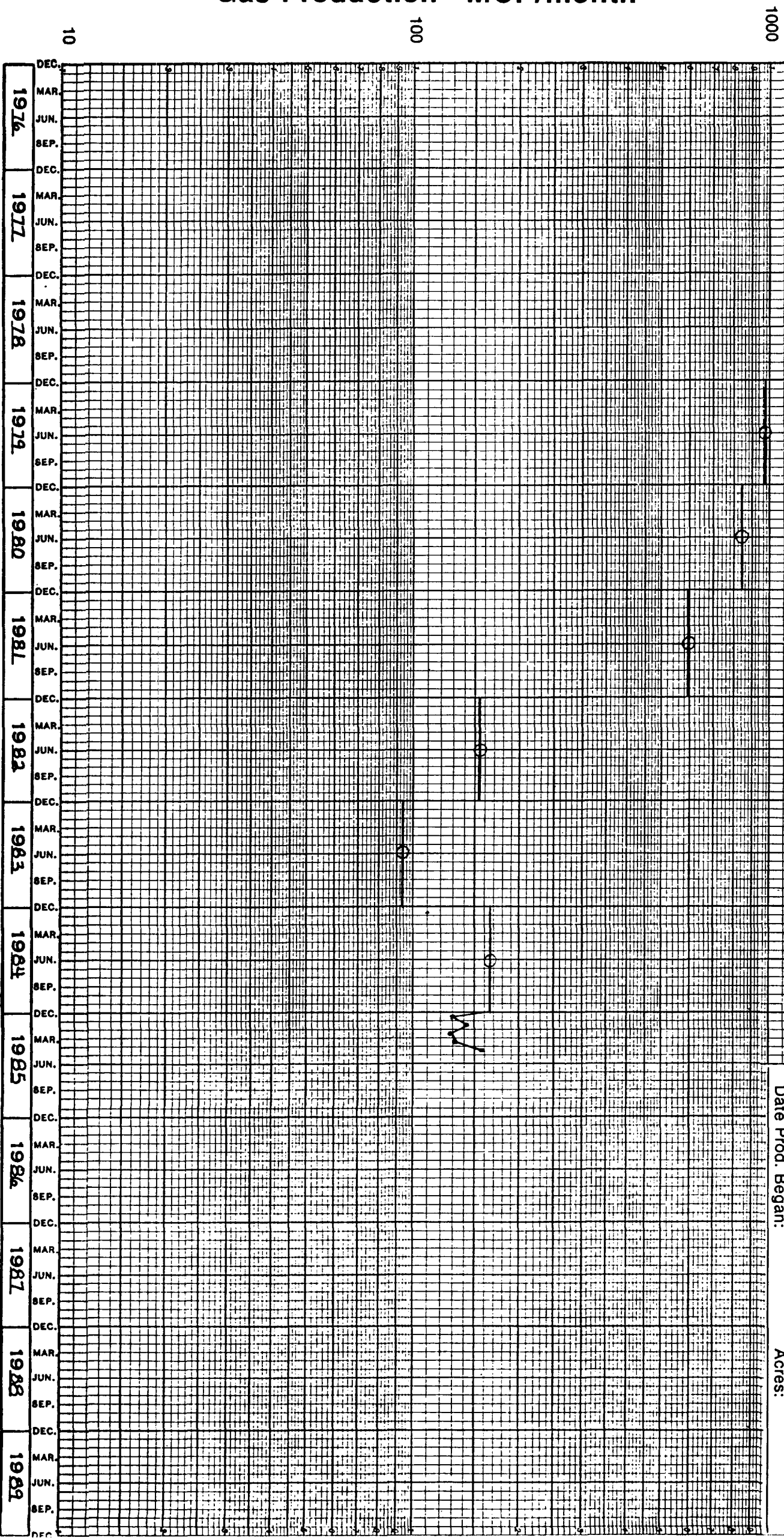
Operator: ALPHA 21 Prod. Co.

Well: HARRISON No. 2

Location: D-27-255-37E

County: LEA State: NM

Date Prod. Began:	Acres:



LEASE NAME HARRISON  
WELL 3  
OPER ALVIN 21 PRODUCTION CO  
LOCATION 272253 JTE  
DOWLE ID # 3022531727001T  
FIELD - JALMAT TMSILL VT 7 RANS (PRO GAS) VT  
PRODUCTION UNIT # - 94990  
SELECTION FROM-TO 70-85  
1ST PRODUCTION 0/00/80  
CUM DATES - LIQUID 0/00/00  
CUMES - LIQUID 0  
GAS 0/00/00  
GAS 0  
0 LIG GATHERER  
0 GAS GATHERER EL PASO NATURAL GAS COMPANY

		PRODUCTION DATA														
TR NR WELLS PROD		JAN	FEB	MAR	APR	MAY	JUN	JUL	AUG	SEP	OCT	NOV	DEC	YTD	ITD	AVG
80 FLOW	LIFT	0	0	0	0	0	1	1	1	1	1	1	1			
	DAYS	0	0	0	0	0	0	0	0	0	0	0	0	0		0
	OIL	0	0	0	0	0	0	0	0	0	0	0	0	0		0
	WATER	0	0	0	0	0	0	0	0	0	0	0	0	0		0
	GAS	0	0	0	0	0	2284	2753	2183	2057	1706	1405	1350	13938	13938	1991
81 FLOW	LIFT	1	1	1	1	1	1	1	1	1	1	1	1			
	DAYS	0	0	0	0	0	0	0	0	0	0	0	0	0		0
	OIL	0	0	0	0	0	0	0	0	0	0	0	0	0		0
	WATER	1320	740	1100	1587	1605	1580	1450	4140	3540	3650	3400	3190	27302		2275
	GAS	1413	1285	1214	1249	1458	1364	2518	2638	2557	2705	2655	2888	23944	37882	1995
82 FLOW	LIFT	1	1	1	1	1	1	1	1	1	1	1	1			
	DAYS	0	0	0	0	0	0	0	0	0	0	0	0	0		0
	OIL	0	0	0	0	0	0	0	0	0	0	0	0	0		0
	WATER	2325	2380	2360	2810	2550	2470	1665	750	375	3300	2100	5660	28745		2395
	GAS	1847	1941	2857	3385	2940	1156	429	126	802	1690	1702	1892	20767	58649	1731
83 FLOW	LIFT	1	1	0	1	1	0	1	1	1	1	1	0			
	DAYS	0	0	0	0	0	0	0	0	0	0	0	0	121		15
	OIL	31	2	0	0	4	0	4	8	30	31	11	0	0		0
	WATER	3830	150	0	0	0	0	0	0	0	0	0	0	3780		1990
	GAS	2039	161	0	1	137	0	125	218	539	1308	405	0	4953	63602	550

IMIGHTS ENERGY DATA SYSTEM      RUN DATE 8/22/85      TIME 10:00:39

PAGE 3

LEASE NAME HARRISON      LOCATION 2/EZSS 37E      IMIGHTS ID # 3022537E27E00T      FIELD - JALPAT TANKSILL YF 7 RMS (PRD GAS) YF      PROBATION UNIT # - 94990

WELL 3

OPER ALPHA 21 PRODUCTION CO

1ST PRODUCTION 0/06/80

DATE DATES - LIQUID 0/00/00      CUMES - LIQUID 0

GAS 0/00/00      GAS 0      LIO GATHERER 0

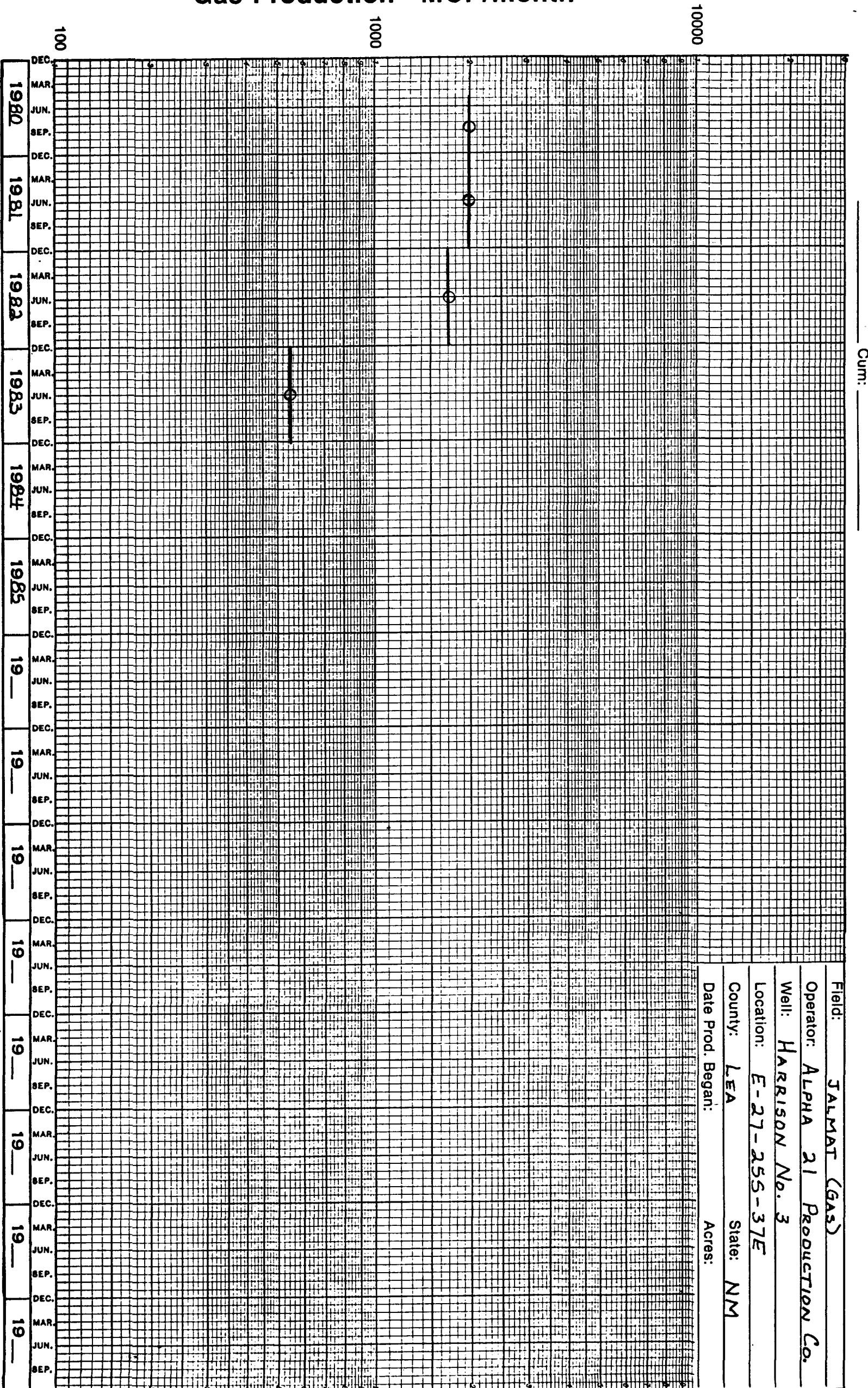
GAS GATHERER EL PASO NATURAL GAS COMPANY

SELECTION FROM-TO 70-85

TEST DATA

TEST DATE	WELLHEAD S/I PRESS	BOT HOLE PRESSURE	Z-FACTOR	P/Z	TEST DATE GAS CUM
80/07/20	121	0	.000	0	4,189
81/11/09	13	0	.000	0	33,136

Gas Production - MCF/month



Field: JALMAT (Gas)

Operator: ALPHA 21 PRODUCTION Co.

Well: HARRISON No. 3

Location: E-27-255-37E

County: LEA State: NM

Date Prod. Began: \_\_\_\_\_ Acres: \_\_\_\_\_



LEASE NAME HARRISON

LOCATION 27L25S 37E

DOWLE'S ID # 30225/STEELEOYT FIELD - JALANI TANGILL Y7 7 RWS (PRO GAS) Y7 PRODUCTION UNIT # - 52340

WELL  
OPER EL PASO NATURAL GAS CO

CONE DATES - LIQUID GAS 0/69/12 CONES - LIQUID GAS 0/69/12

0 LIG GATHERER  
795843 GAS GATHERER EL PASO NATURAL GAS COMPANY

SELECTION  
FROM-TO  
70-85

1ST PRODUCTION 0/00/00

PRODUCTION DATA

TR NO	WELLS	PRODUM	JAN	FEB	MAR	APR	MAY	JUN	JUL	AUG	SEP	OCT	NOV	DEC	YTD	1TD	AVG
70 FLOW	LIFT		1	1	1	1	1	1	1	1	1	1	1	1			
		DAYS	0	0	0	0	0	0	0	0	0	0	0	0			0
		OIL	0	0	0	0	0	0	0	0	0	0	0	0			0
		WATER	0	0	0	0	0	0	0	0	0	0	0	0			0
		GAS	2652	1686	2780	2321	1935	2814	1166	1700	1449	1800	50	2622	22975	818818	1915
71 FLOW	LIFT		1	1	1	1	1	1	1	0	1	1	1	0			
		DAYS	0	0	0	0	0	0	0	0	0	0	0	0			0
		OIL	0	0	0	0	0	0	0	0	0	0	0	0			0
		WATER	0	0	0	0	0	0	0	0	0	0	0	0			0
		GAS	2231	901	1690	1922	435	1574	80	0	582	557	160	0	10152	828970	1015
72 FLOW	LIFT		0	1	0	0	0	0	0	0	1	1	1	1			
		DAYS	0	0	0	0	0	0	0	0	0	0	0	0			0
		OIL	0	0	0	0	0	0	0	0	0	0	0	0			0
		WATER	0	0	0	0	0	0	0	0	0	0	0	0			0
		GAS	0	22	0	0	0	0	0	0	818	8751	4523	2792	16906	845876	3381
73 FLOW	LIFT		1	1	1	1	1	1	1	1	1	1	1	1			
		DAYS	0	0	0	0	0	0	0	0	0	0	0	0			0
		OIL	0	0	0	0	0	0	0	0	0	0	0	0			0
		WATER	0	0	0	0	0	0	0	0	0	0	0	0			0
		GAS	3176	2337	2845	2478	1685	1946	2294	2055	1564	1593	2512	1533	26018	871894	2168
74 FLOW	LIFT		1	1	1	1	1	1	1	1	1	1	1	1			
		DAYS	0	0	0	0	0	0	0	0	0	0	0	0			0
		OIL	0	0	0	0	0	0	0	0	0	0	0	0			0
		WATER	0	0	0	0	0	0	0	0	0	0	0	0			0
		GAS	460	401	1809	1306	1370	1225	956	957	347	93	832	545	10301	882195	828
75 FLOW	LIFT		1	0	0	1	1	1	1	1	1	1	1	1			
		DAYS	0	0	0	0	0	0	0	0	0	0	0	0			0
		OIL	0	0	0	0	0	0	0	0	0	0	0	0			0
		WATER	0	0	0	0	0	0	0	0	0	0	0	0			0
		GAS	714	0	0	406	971	475	222	2976	2318	2267	2322	868	13539	895734	1354

LEASE NAME HARRISON LOCATION 271255 37E DWIGHTS ID # 3022557E271007T FIELD - JALPAT TANGILL Y7 7 RWAS (PRO GAS) Y7 PRODUCTION UNIT # - 52340

WELL 1  
OPER EL PASO NATURAL GAS CO

CINE DATES - LIQUID 0/69/12 CINES - LIQUID 0 LIO GATHERER

1ST PRODUCTION 0/00/00

GAS 0/69/12 GAS

775843 GAS GATHERER EL PASO NATURAL GAS COMPANY

SELECTION  
FROM-70  
70-85

PRODUCTION DATA

TR NR WELLS PROD	JAN	FEB	MAR	APR	MAY	JUN	JUL	AUG	SEP	OCT	NOV	DEC	YTD	ITD	AVG
76 FLOW	1	1	1	1	1	1	1	1	1	1	1	1			
LIFT	0	0	0	0	0	0	0	0	0	0	0	0			
DAYS	0	0	0	0	0	0	0	0	0	0	0	0			
OIL	0	0	0	0	0	0	0	0	0	0	0	0			
WATER	0	0	0	0	0	0	0	0	0	0	0	0			
GAS	1958	1779	1725	1778	1739	1343	2017	2126	1185	1310	478	554	17972	913706	1498
77 FLOW	1	1	1	1	1	1	1	1	1	1	1	1			
LIFT	0	0	0	0	0	0	0	0	0	0	0	0			
DAYS	0	0	0	0	0	0	0	0	0	0	0	0			
OIL	0	0	0	0	0	0	0	0	0	0	0	0			
WATER	0	0	0	0	0	0	0	0	0	0	0	0			
GAS	529	526	1498	727	781	2847	2012	941	642	327	286	2	11118	924824	927
78 FLOW	1	1	1	1	1	1	1	1	1	1	1	1			
LIFT	0	0	0	0	0	0	0	0	0	0	0	0			
DAYS	0	0	0	0	0	0	0	0	0	0	0	0			
OIL	0	0	0	0	0	0	0	0	0	0	0	0			
WATER	0	0	0	0	0	0	0	0	0	0	0	0			
GAS	158	167	70	154	186	175	179	186	180	186	180	186	2007	939738	167
79 FLOW	1	1	1	1	1	1	1	1	1	1	1	1			
LIFT	0	0	0	0	0	0	0	0	0	0	0	0			
DAYS	0	0	0	0	0	0	0	0	0	0	0	0			
OIL	0	0	0	0	0	0	0	0	0	0	0	0			
WATER	139	168	187	180	166	162	181	4	148	186	180	160	1861	952809	153
GAS	1159	984	1147	987	1249	1371	1199	70	1426	1452	1222	805	13071	952809	1089
80 FLOW	1	1	1	1	1	1	1	1	1	1	1	1			
LIFT	0	0	0	0	0	0	0	0	0	0	0	0			
DAYS	0	0	0	0	0	0	0	0	0	0	0	0			
OIL	0	0	0	0	0	0	0	0	0	0	0	0			
WATER	52	137	175	131	144	169	157	186	155	180	167	176	1829	963528	152
GAS	199	1296	1065	866	763	1319	904	838	967	1146	749	607	10719	963528	893
81 FLOW	1	1	1	1	1	1	1	1	1	1	1	1			
LIFT	0	0	0	0	0	0	0	0	0	0	0	0			
DAYS	0	0	0	0	0	0	0	0	0	0	0	0			
OIL	0	0	0	0	0	0	0	0	0	0	0	0			
WATER	176	157	155	106	175	130	119	158	157	157	173	80	1743	970679	145
GAS	628	563	743	385	462	557	530	686	669	630	767	531	7151	970679	596



DWIGHTS ENERGY SYSTEM RUN DATE 8/22/85 TIME 09157:41

PAGE 6

LEASE NAME HARRISON LOCATION 2A,25S 37E DWIGHTS ID # 3022537E27L00YT FIELD - JALANI TMSILL YR 7 RWS (PRO GAS) YR PRODUCTION UNIT # - 52340

WELL 1 OPER EL PASO NATURAL GAS CO

1ST PRODUCTION 0/00/00

CUM DATE - LIQUID 0/69/12 CUMES - LIQUID 0 LTO GATHERER 795843 GAS GATHERER EL PASO NATURAL GAS COMPANY

SELECTION FROM-TO 70-85

TEST DATA

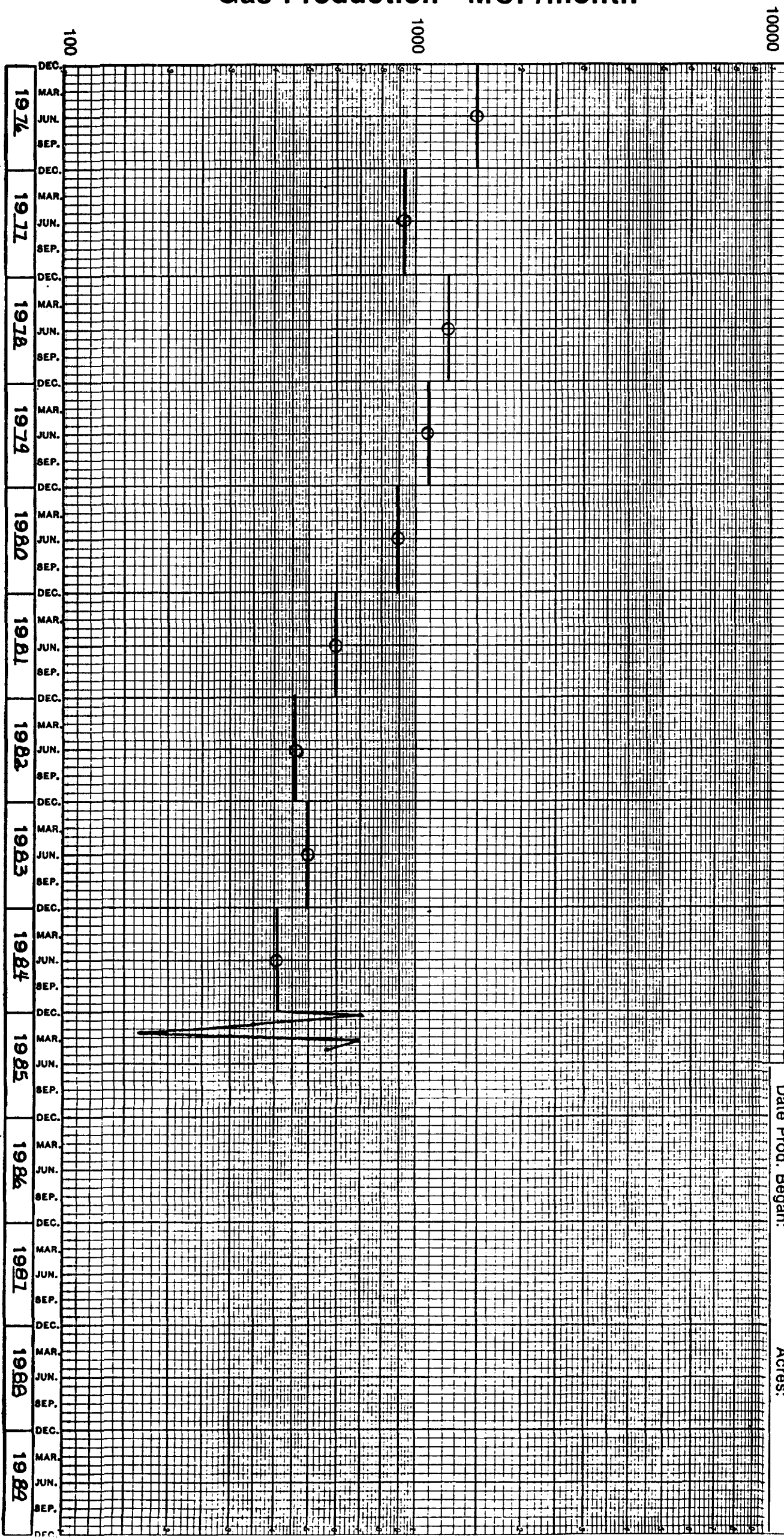
TEST DATE	WELLHEAD S/L PRESS	BOI HOLE PRESSURE	Z-FACTOR	P/Z	TEST DATE
70/06/79	122	130	.981	133	809,937
71/07/08	191	204	.971	210	827,826
72/06/19	239	254	.964	263	828,992
73/03/01	98	105	.985	107	836,766
74/04/23	101	108	.984	110	875,565
75/04/22	158	169	.976	173	883,207
76/04/13	91	97	.986	98	901,966
77/05/10	110	117	.983	119	917,238
78/04/25	121	129	.981	131	928,467
79/04/20	88	94	.986	95	946,178
80/04/08	70	75	.989	76	955,600
81/03/24	26	28	.996	28	965,294
82/04/20	116	124	.982	126	972,496
83/03/29	70	75	.989	76	976,434

## Cum: \_\_\_\_\_

Operator: EL PASO NATURAL GAS Co.

Location: L-27-253-37E

Date Prod. Began: Acres:





DATE 12/04/2  
DOYLE HARTMAN, OIL OPERATOR  
DAUGHTS ENERGY DATA SYSTEM  
RUN DATE 8/22/85 TIME 09:17:41

PAGE 16

LEASE NAME SANTA FE FEDERAL LOCATION 27N25S 37E DAUGHTS ID # 3023337E7N00T FIELD - JALPAT TMSILL YT 7 RWS (PRO GAS) YT PRODUCTION UNIT # - 92090

WELL 1  
OPER HARTMAN DOYLE

1ST PRODUCTION 0/12/79

DATE DATES - LIQUID 0/00/00 CUMES - LIQUID 0 LID GATHERER  
GAS 0/00/00 GAS GAS GATHERER EL PASO NATURAL GAS COMPANY

SELECTION FROM-TO 70-85

PRODUCTION DATA

TR NO	WELLS	PROD	JAN	FEB	MAR	APR	MAY	JUN	JUL	AUG	SEP	OCT	NOV	DEC	YTD	ITD	AVG
85	FLOU		1	1	1	1	1	0	0	0	0	0	0	0			
	LIFT		0	0	0	0	0	0	0	0	0	0	0	0			
	DAYS		31	28	31	28	31	0	0	0	0	0	0	0	149		30
	OIL		0	0	0	0	0	0	0	0	0	0	0	0	0		0
	WATER		84	105	54	72	91	0	0	0	0	0	0	0	396		79
	GAS		355	357	357	301	378	0	0	0	0	0	0	0	1728	59333	346

DWIGHTS ENERGY SYSTEM      RUN DATE 8/22/85      TIME 09:57:41

PAGE 7

LEASE NAME SANTA FE FEDERAL      LOCATION 274228 3YE      DWIGHTS ID # 3022557E27400YT      FIELD - JALMAT TMSILL YT 7 RWS (PRO GAS) YT      PRODUCTION UNIT # - 92090

WELL 1

OPER HARTMAN DOOLE

1ST PRODUCTION 0/12/79

CLINE DATES - LIQUID 0/00/00      CLINES - LIQUID GAS

0 LIO GATHERER  
0 GAS GATHERER EL PASO NATURAL GAS COMPANY

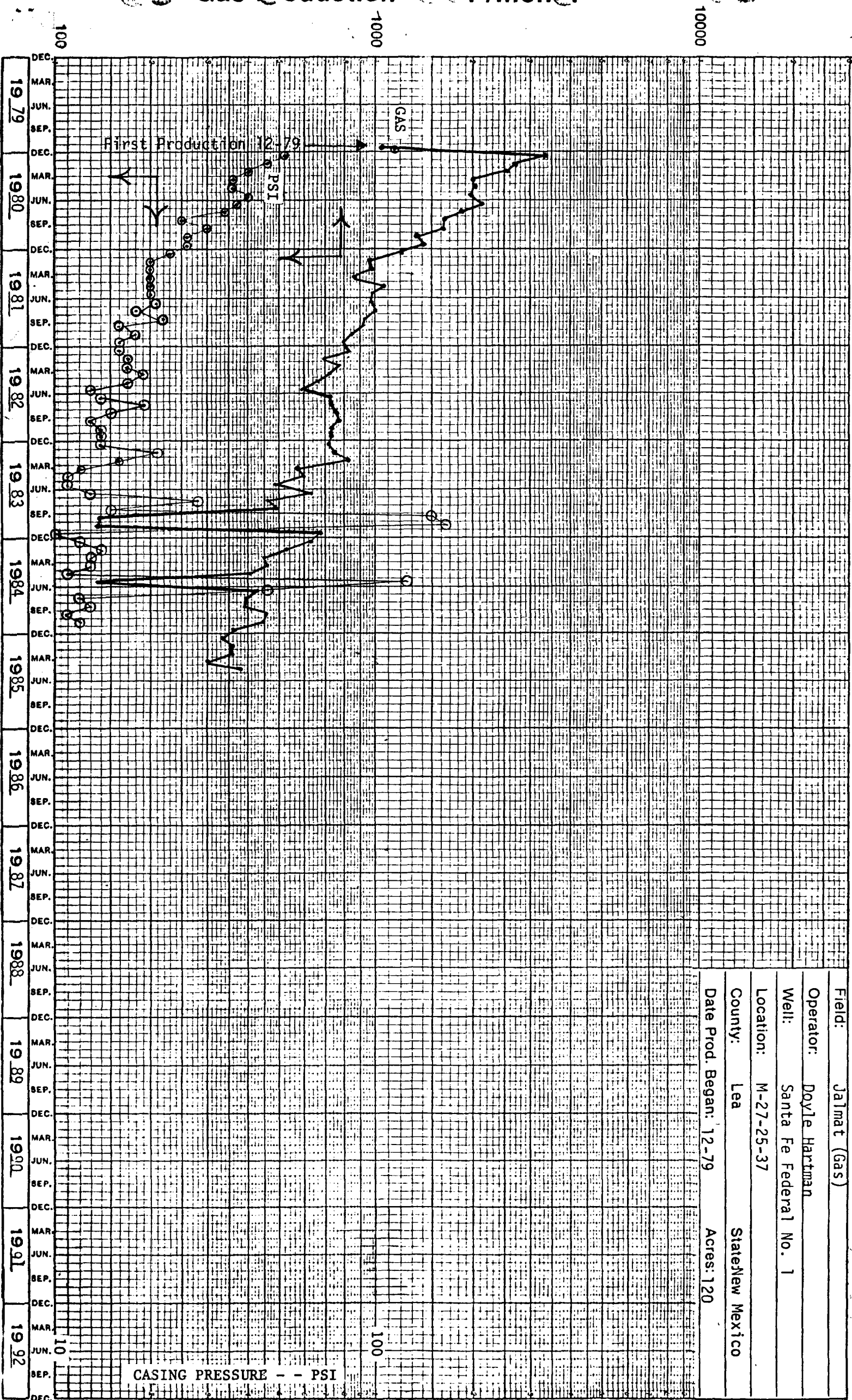
SELECTION FROM TO 70-85

TEST DATA

WELLHEAD	BOT HOLE		
TEST DATE	S/I PRESS	PRESSURE	P/Z
			TEST DATE
			GAS CLINE



# Gas Production - F/mon



Field: Jalmat (Gas)

Operator: Doyle Hartman

Well: Santa Fe Federal No. 1

Location: M-27-25-37

County: Lea

Date Prod. Began: 12-79

Acres: 120

State: New Mexico

MUT12002  
IDOLE HARKIN, OIL OPERATOR  
WRIGHTS ELECTROMATA SYSTEM  
RUN DATE 8/22/85 TIME 10:00:59  
PAGE 6  
LEASE NAME C. J. LINDHART  
WELL 1  
OPER RESERVE OIL & GAS CO  
LOCATION 288255 JTE  
WRIGHTS ID # 30225312388/AVT  
FIELD - JALPAT TMSILL VT 7 WMS (PRO GAS) YT  
PRODUCTION UNIT # - 40657  
1ST PRODUCTION 0/00/00  
DATE DATES - LIQUID 0/69/12  
DUES - LIQUID  
GAS 0/69/12  
GAS  
1536 LID GATHERER  
550422 GAS GATHERER  
SELECTION  
FROM-TO  
70-85

PRODUCTION DATA

YR NR WELLS FROM	JAN	FEB	MAR	APR	MAY	JUN	JUL	AUG	SEP	OCT	NOV	DEC	YTD	ITD	AVG
------------------	-----	-----	-----	-----	-----	-----	-----	-----	-----	-----	-----	-----	-----	-----	-----

DAUGHTS DESIGNATA SYSTEM RUN DATE 8/22/85 TIME 10:00:59

PAGE 4

LEASE NAME C J LAMBERT

LOCATION 288235 JTE

DAUGHTS ID # 302235JTEBPAAT

FIELD - JALANI TMSILL TT 7 RWS (PRO GAS) YT

PRODUCTION UNIT # - 40857

WELL 1

OPER RESERVE OIL & GAS CO

1ST PRODUCTION 0/00/00

DATE DATES - LIQUID 0/69/12 OUES - LIQUID

1536 LID GATHERER

550422 GAS GATHERER

SELECTION FROM TO 70-85

TEST DATA

WELLHEAD BOT HOLE TEST DATE  
TEST DATE S/I PRESS PRESSURE Z-FACTOR P/Z GAS CME

DW12042  
DOWLE HARTMAN, OIL OPERATOR  
DOWLE HARTMAN SYSTEM RUN DATE 8/22/85 TIME 09:15:41

PAGE 17

LEASE NAME COOK LOCATION 280225 JTE DWLIGTS ID # 302253128000T FIELD - JALANI TMSILL YF 7 RARS (PRO GAS) YF PREPARATION UNIT # - 62530

WELL 1  
OPER BURGESS LEWIS & INC

1ST PRODUCTION 0/10/73

CLPE DATES - LIQUID 0/00/00 CLPES - LIQUID 0/00/00

0 LIG GATHERER PERMIAN CORPORATION  
0 GAS GATHERER EL PASO NATURAL GAS COMPANY

SELECTION  
FROM TO  
70-85

PRODUCTION DATA

YR NR WELLS PROD	JAN	FEB	MAR	APR	MAY	JUN	JUL	AUG	SEP	OCT	NOV	DEC	YTD	1TD	AVG
73 FLOW	0	0	0	0	0	0	0	0	0	1	1	1			
LIFT	0	0	0	0	0	0	0	0	0	0	0	0			
DAYS	0	0	0	0	0	0	0	0	0	0	0	0			
OIL	0	0	0	0	0	0	0	0	0	0	0	0			
WATER	0	0	0	0	0	0	0	0	0	0	0	0			
GAS	0	0	0	0	0	0	0	0	0	7489	11027	9256	27772	27772	9257
74 FLOW	1	1	1	1	1	1	1	1	1	1	1	1			
LIFT	0	0	0	0	0	0	0	0	0	0	0	0			
DAYS	0	0	0	0	0	0	0	0	0	0	0	0			
OIL	0	0	0	0	0	0	0	0	0	0	0	0			
WATER	0	0	0	0	0	0	0	0	0	0	0	0			
GAS	10650	8508	9232	8071	8538	8045	7266	8111	8265	9611	8850	10041	105208	132780	8767
75 FLOW	1	1	1	1	1	1	1	1	1	1	1	1			
LIFT	0	0	0	0	0	0	0	0	0	0	0	0			
DAYS	0	0	0	0	0	0	0	0	0	0	0	0			
OIL	0	0	0	0	0	0	0	0	0	0	0	0			
WATER	0	0	0	0	0	0	0	0	0	0	0	0			
GAS	11121	10026	10497	8863	9547	8663	7887	8877	7798	8214	7752	8094	107359	240339	8947
76 FLOW	1	1	1	1	1	1	1	1	1	1	1	1			
LIFT	0	0	0	0	0	0	0	0	0	0	0	0			
DAYS	0	0	0	0	0	0	0	0	0	0	0	0			
OIL	0	0	0	0	0	0	0	0	0	0	0	0			
WATER	0	0	0	0	0	0	0	0	0	0	0	0			
GAS	8224	8038	7487	8226	9071	7923	7583	7746	7105	7259	6365	7396	92423	352762	7702
77 FLOW	1	1	1	1	1	1	1	1	1	1	1	1			
LIFT	0	0	0	0	0	0	0	0	0	0	0	0			
DAYS	0	0	0	0	0	0	0	0	0	0	0	0			
OIL	0	0	0	0	0	0	0	0	0	0	0	0			
WATER	0	0	0	0	0	0	0	0	0	0	0	0			
GAS	6965	7192	7376	6992	6960	6398	6853	6398	5496	6054	5843	5875	78402	411164	6534
78 FLOW	1	1	1	1	1	1	1	1	1	1	1	1			
LIFT	0	0	0	0	0	0	0	0	0	0	0	0			
DAYS	0	0	0	0	0	0	0	0	0	0	0	0			
OIL	0	0	0	0	0	0	0	0	0	0	0	0			
WATER	0	0	0	0	0	0	0	0	0	0	0	0			
GAS	6014	5319	6309	1588	6747	6246	5589	5220	5491	6041	5541	6456	66761	477925	5563

**DATE 12/04/2**

**DOYLE HARTMAN, OIL OPERATOR  
IMAGINE'S ENERGY DATA SYSTEM**

RUN DATE 8/22/85 TIME 09:57:41

**PAGE 18**

LEASE NAME	COCK
151	

LOCATION 280255 37E

DWIGHTS ID # 3022ESTE2800YT FIELD - JALPAT TANSILL YT 7 RURS (PRO GAS) YT PRODRATION UNIT # - 62530

OPER BURESON LEWIS & INC

CURE DATES - LIQUID 0/00/00 CURES - LIQUID

**0 LIG GATHERER PERMIAN CORPORATION**

**Figure 1**

1ST PRODUCTION 0/10/73

GAS	0/00/00	GAS
-----	---------	-----

0 GAS GATHERER EL PASO, NATURAL GAS COMPANY

FROM-T

### PRODUCTION DATA

TR NR	WELLS	PROD	JAN	FEB	MAR	APR	MAY	JUN	JUL	AUG	SEP	OCT	NOV	DEC	YTD	ITD	AVG	
79 FLOW	LIFT		1	1	1	1	1	1	1	1	1	1	1	1				
		DAYS	0	0	0	0	0	0	0	0	0	0	0	0	0	0		
		OIL	0	0	0	0	0	0	0	0	0	0	0	0	0	0	77	0
		WATER	0	0	0	0	0	0	0	0	0	0	0	0	0	0	0	0
		GAS	0	0	0	0	0	0	0	0	0	0	0	0	0	0	0	0
80 FLOW	LIFT	1	1	1	1	1	1	1	1	1	1	1	1	1				
		DAYS	0	0	0	0	0	0	0	0	0	0	0	0	0	0		0
		OIL	0	0	0	0	0	0	0	0	0	60	0	0	0	60	137	60
		WATER	0	0	0	0	0	0	0	0	0	30	0	0	0	30	30	30
		GAS	5423	5063	5331	4592	5106	5035	4559	5163	6617	5096	4801	4851	61637	605793	5136	
81 FLOW	LIFT	1	1	0	0	0	0	0	0	1	0	1	1	1				
		DAYS	0	0	0	0	0	0	0	0	0	0	0	0	0	0		0
		OIL	0	0	0	0	0	0	0	0	0	0	0	0	0	0	137	0
		WATER	0	0	0	0	0	0	0	0	0	0	0	0	0	0	0	0
		GAS	4788	4250	0	0	0	0	0	0	631	0	1203	1120	1653	13645	619438	2274
82 FLOW	LIFT	1	1	1	1	1	1	0	1	1	1	1	1	1				
		DAYS	0	0	0	0	0	0	0	0	0	0	0	0	0	0		0
		OIL	0	0	0	0	0	0	0	0	0	0	0	0	0	0	137	0
		WATER	0	0	0	0	0	0	0	0	0	0	0	0	0	0	0	0
		GAS	1652	1463	1555	1350	1450	0	1046	423	1225	1494	1427	1761	14846	634284	1350	
83 FLOW	LIFT	1	1	1	1	1	1	1	1	1	1	0	1	1				
		DAYS	0	0	0	0	0	0	0	0	0	0	0	0	0	278	137	27
		OIL	31	28	28	30	31	30	31	23	30	0	5	31	31	278	137	27
		WATER	0	0	0	0	0	0	0	0	0	0	0	0	0	0	0	0
		GAS	1530	1466	1596	1461	1555	1398	1629	1288	893	0	257	1192	14265	648549	1297	
84 FLOW	LIFT	1	0	1	1	1	1	1	1	1	1	1	1	1				
		DAYS	0	0	0	0	0	0	0	0	0	0	0	0	0	285	137	26
		OIL	15	0	27	30	31	5	24	31	30	31	30	31	31	285	137	26
		WATER	0	0	0	0	0	0	0	0	0	0	0	0	0	0	0	0
		GAS	1037	0	2041	4197	3839	12	1060	1676	3463	4336	3865	3346	28992	677541	2636	

LEASE NAME COOK

LOCATION 280255 37E

WEIGHTS ID # 30225637E28000YT

FIELD - JALPAT TANSILL YT 7 RURS (PRO GAS) YT

PROBATION UNIT - 62534

OPER BURELSON LEWIS B INC

1ST PRODUCTION 0/10/73

GAS 0/00/00

**CS**

0 GAS GATHERER EL PASO NATURAL GAS COMPANY

SELECTION  
FROM-TO  
70-85

### PRODUCTION DATA

TR NR WELLS PROD	JAN	FEB	MAR	APR	MAY	JUN	JUL	AUG	SEP	OCT	NOV	DEC	YTD	ITD	AVG
85 FLOW	1	0	1	1	1	0	0	0	0	0	0	0			
LIFT	0	0	0	0	0	0	0	0	0	0	0	0			
DAYS	31	0	28	27	30	0	0	0	0	0	0	0	116		29
OIL	0	0	0	0	0	0	0	0	0	0	0	0	0	137	0
WATER	0	0	0	0	0	0	0	0	0	0	0	0	0		0
GAS	3513	0	2701	2292	1566	0	0	0	0	0	0	0	10072	687613	2318

DWIGHTS ENERGY SYSTEM RUN DATE 8/22/85 TIME 09:57:41

LEASE NAME COOK WELL 1 LOCATION 280225 STE DWIGHTS 10 # 3022537E28000TT FIELD - JALPAT TMSILL YT 7 RARS (PRO GAS) YT PRODUCTION UNIT # - 62530

OPER BURLSON LEUIS B INC 1ST PRODUCTION 0/10/73 CUMES DATES - LIQUID 0/00/00 CUMES - LIQUID 0 GAS GATHERER PERMIAN CORPORATION 0 GAS GATHERER EL PASO NATURAL GAS COMPANY

SELECTION FROM-TO 70-85

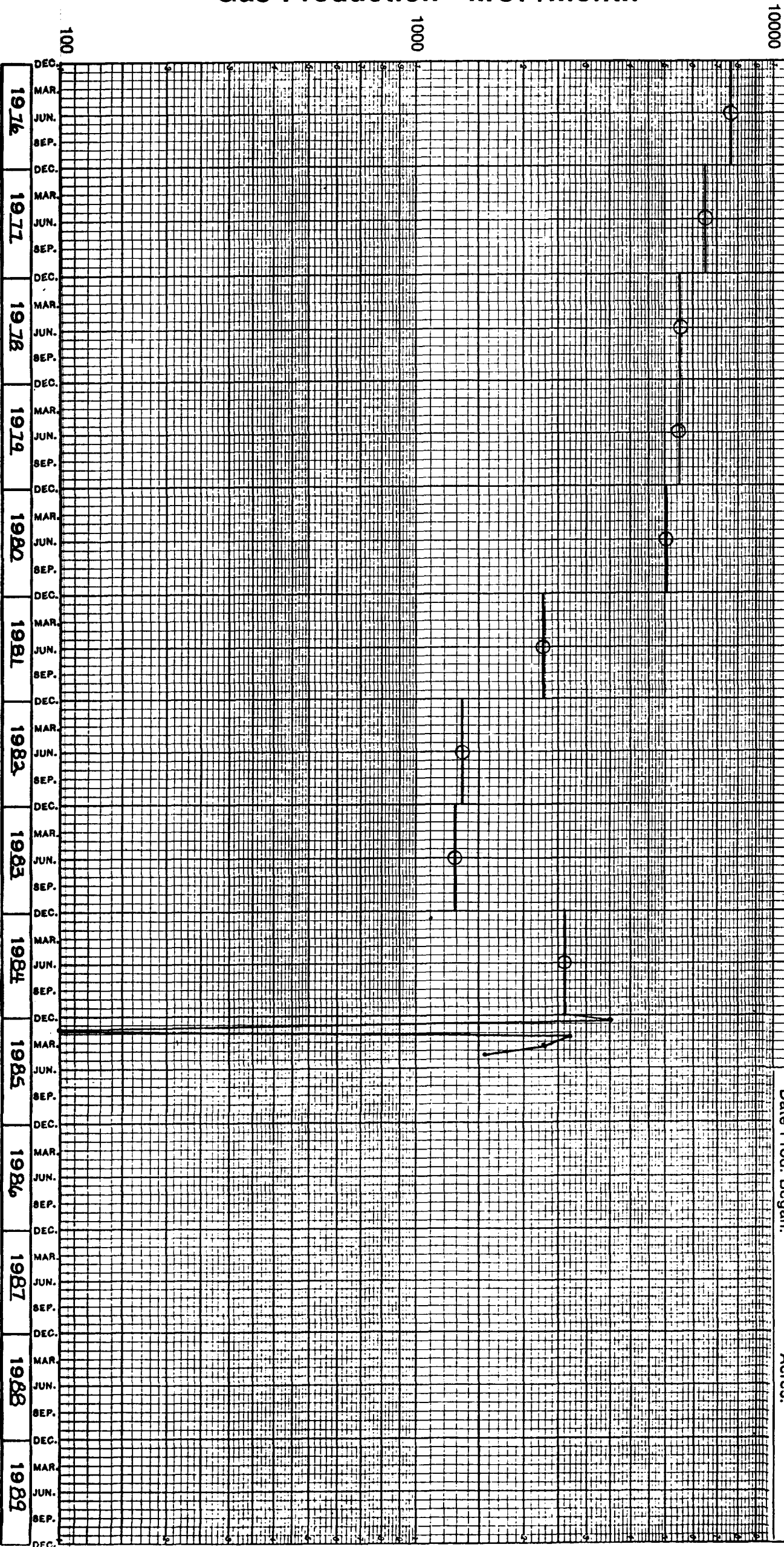
TEST DATA

TEST DATE	WELLHEAD S/L PRESS	BOF HOLE PRESSURE	Z-FACTOR	P/Z	TEST DATE GAS CUMES
73/09/04	499	531	.922	576	98,693
74/09/09	348	370	.945	392	171,123
75/04/22	275	292	.956	305	267,652
76/04/13	263	279	.958	291	343,532
77/05/10	231	245	.963	254	430,129
78/04/25	223	237	.964	201	524,723
79/09/14	184	195	.970	187	561,198
80/04/08	172	182	.972	187	625,008
82/04/20	248	263	.960	274	638,773
83/03/29	205	218	.967	225	

Gas Production - MCF/month

Cum: \_\_\_\_\_

Field: TALMAT GAS  
Operator: LEWIS B. BURLINSON, INC.  
Well: COOK No. 1  
Location: O - 28 - 255 - 37E  
County: LEA State: NM  
Date Prod. Began: Acres:





DW12042  
DOWLE HARTMAN, OIL OPERATOR  
DOWLE'S ELECTROMIA SYSTEM

PAGE 20

RUN DATE 8/22/85 TIME 09:57:41

LEASE NAME COOK

LOCATION 289225 JTE

DW12042 ID # 3022527289007T FIELD - JAWANT TANGILL VT 7 RWS (PRO GAS) VT PRODUCTION UNIT # - 62530

WELL 2

CONE DATES - LIQUID 0/00/00 CONES - LIQUID 0

OPER BURESON LEWIS & INC

1ST PRODUCTION 0/00/00

GAS 0/69/12

54781 GAS GATHERER EL PASO NATURAL GAS COMPANY

SELECTION  
FROM-TO  
70-85

PRODUCTION DATA

YR NR WELLS PROD	JAN	FEB	MAR	APR	MAY	JUN	JUL	AUG	SEP	OCT	NOV	DEC	YTD	ITD	AVG
70 FLOW	0	0	0	0	0	0	0	0	0	0	0	0	0	0	0
LIFT	0	0	0	0	0	0	0	0	0	0	0	0	0	0	0
DAYS	0	0	0	0	0	0	0	0	0	0	0	0	0	0	0
OIL	0	0	0	0	0	0	0	0	0	0	0	0	0	0	0
WATER	0	0	0	0	0	0	0	0	0	0	0	0	0	0	0
GAS	7708	5536	7336	8715	9427	8705	8676	8917	8576	8282	9653	10154	101685	158466	8474
71 FLOW	1	1	1	1	1	1	1	1	1	1	1	1	1	1	1
LIFT	0	0	0	0	0	0	0	0	0	0	0	0	0	0	0
DAYS	0	0	0	0	0	0	0	0	0	0	0	0	0	0	0
OIL	0	0	0	0	0	0	0	0	0	0	0	0	0	0	0
WATER	0	0	0	0	0	0	0	0	0	0	0	0	0	0	0
GAS	9613	7603	8657	8011	8469	8412	7711	7566	6979	7089	6595	6763	92468	251934	7789
72 FLOW	1	1	1	1	1	1	1	1	1	1	1	1	1	1	1
LIFT	0	0	0	0	0	0	0	0	0	0	0	0	0	0	0
DAYS	0	0	0	0	0	0	0	0	0	0	0	0	0	0	0
OIL	0	0	0	0	0	0	0	0	0	0	0	0	0	0	0
WATER	0	0	0	0	0	0	0	0	0	0	0	0	0	0	0
GAS	6511	5670	6291	6432	6349	4977	6179	5746	5428	5569	4712	5827	69691	321625	5808
73 FLOW	1	1	1	1	1	1	1	1	1	1	1	1	1	1	1
LIFT	0	0	0	0	0	0	0	0	0	0	0	0	0	0	0
DAYS	0	0	0	0	0	0	0	0	0	0	0	0	0	0	0
OIL	0	0	0	0	0	0	0	0	0	0	0	0	0	0	0
WATER	0	0	0	0	0	0	0	0	0	0	0	0	0	0	0
GAS	5159	4515	5042	4241	5088	4672	7123	4979	4071	4049	3662	3624	56225	377850	4685
74 FLOW	1	1	1	1	1	1	1	1	1	1	1	1	1	1	1
LIFT	0	0	0	0	0	0	0	0	0	0	0	0	0	0	0
DAYS	0	0	0	0	0	0	0	0	0	0	0	0	0	0	0
OIL	0	0	0	0	0	0	0	0	0	0	0	0	0	0	0
WATER	0	0	0	0	0	0	0	0	0	0	0	0	0	0	0
GAS	3965	3424	3130	2043	1925	1800	1858	1789	3532	4995	2704	5031	36196	414046	3016
75 FLOW	1	1	1	1	1	1	1	1	1	1	1	1	1	1	1
LIFT	0	0	0	0	0	0	0	0	0	0	0	0	0	0	0
DAYS	0	0	0	0	0	0	0	0	0	0	0	0	0	0	0
OIL	0	0	0	0	0	0	0	0	0	0	0	0	0	0	0
WATER	0	0	0	0	0	0	0	0	0	0	0	0	0	0	0
GAS	3289	4937	5004	4436	4426	4497	3983	4510	4320	4297	3764	3885	53318	467364	4443

LEASE NAME: COOK  
WELL: 2  
OPER: BURLINSON LEWIS B INC  
LOCATION: 28/25S JTE  
DOWLE ID: 30225S2825P007T  
FIELD: JMWAIT TANSILL Y7 7 RARS (PROD GAS) Y7  
PRODUCTION UNIT: 62530  
SELECTION: FROM-10  
70-85  
1ST PRODUCTION: 0/00/00  
CUMES DATES - LIQUID: 0/00/00  
CUMES - LIQUID: 0/89/12  
GAS: 56781  
GAS GATHERER: EL PASO NATURAL GAS COMPANY

		PRODUCTION DATA														
YR NR WELLS PROD		JAN	FEB	MAR	APR	MAY	JUN	JUL	AUG	SEP	OCT	NOV	DEC	YTD	ITD	AVG
76 FLOW	LIFT	1	1	1	1	1	1	1	1	1	1	1	1	0		
	DAYS	0	0	0	0	0	0	0	0	0	0	0	0	0		
	OIL	70	25	89	0	22	62	63	78	7	26	0	0	442	2116	49
	WATER	0	0	0	0	11	0	0	0	0	0	0	0	11		11
	GAS	4167	3313	2927	3168	3159	2852	3026	2669	1216	1326	476	739	29037	496401	2420
77 FLOW	LIFT	1	1	1	1	1	1	1	1	1	1	1	1	0		
	DAYS	0	0	0	0	0	0	0	0	0	0	0	0	0		
	OIL	0	58	28	88	50	10	64	22	37	0	125	99	581	2697	58
	WATER	0	24	0	0	0	22	0	0	0	0	31	21	98		25
	GAS	2228	3179	3463	3788	2336	2442	3519	1685	1317	457	3246	2800	30660	527061	2335
78 FLOW	LIFT	1	1	1	1	1	1	1	1	1	1	1	1	0		
	DAYS	0	0	0	0	0	0	0	0	0	0	0	0	0		
	OIL	46	6	78	11	29	0	48	110	73	78	96	0	575	3272	58
	WATER	7	0	0	9	0	0	13	0	0	37	0	50	116		23
	GAS	2698	2240	1248	5802	2736	2599	2335	2394	2404	2168	2635	1529	30808	537869	2367
79 FLOW	LIFT	1	1	1	1	1	1	1	1	1	1	1	1	0		
	DAYS	0	0	0	0	0	0	0	0	0	0	0	0	0		
	OIL	52	5	0	43	40	20	23	7	0	62	54	62	368	3640	37
	WATER	0	0	0	0	0	0	0	0	0	0	30	0	30		30
	GAS	1348	845	408	2459	2472	2078	1622	344	170	1805	1896	2670	18117	575986	1510
80 FLOW	LIFT	1	1	1	1	1	1	1	1	0	0	0	0	0		
	DAYS	0	0	0	0	0	0	0	0	0	0	0	0	0		
	OIL	62	43	62	59	32	60	62	20	0	0	0	0	400	4040	50
	WATER	0	35	60	20	30	30	0	23	0	0	0	0	198		33
	GAS	2259	1849	1864	1721	1856	1960	2080	1892	0	0	0	0	15381	591567	1948

DWIGHTS ENERGY SYSTEM      RUN DATE 8/22/85      TIME 09:57:41

PAGE 9

LEASE NAME COOK 2      LOCATION 28P225 37E      DWIGHTS ID # 3022537E28P00T      FIELD - JALPAT TANGILL VT 7 RAPS (PROD GAS) VT      PRODUCTION UNIT # - 62530

WELL OPER MARLESON LEWIS & INC

1ST PRODUCTION 0/00/00      CLINE DATES - LIQUID 0/00/00      CLINES - LIQUID 0      LIQ GATHERER PERMIAN CORPORATION

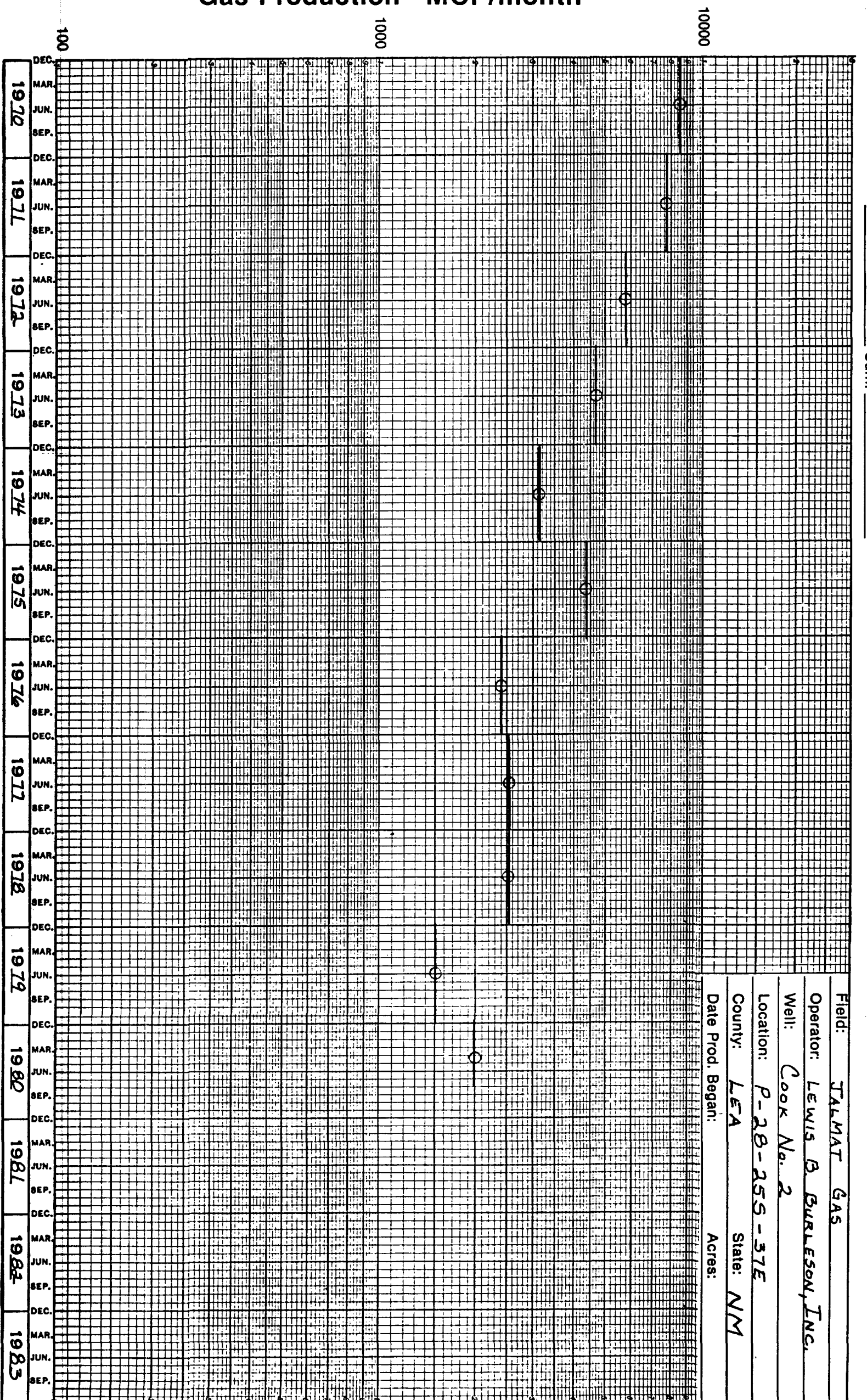
SELECTION FROM-ID 70-85

GAS 0/69/12      GAS 56781      GAS GATHERER EL PASO NATURAL GAS COMPANY

TEST DATA

TEST DATE	WELLHEAD S/I PRESS	ROT HOLE PRESSURE	Z-FACTOR	P/Z	TEST DATE GAS CLINE
70/07/30	451	0	.000	0	112,604
71/08/05	350	0	.000	0	218,162
73/05/01	305	0	.000	0	340,746
74/04/23	199	0	.000	0	387,935
75/04/22	252	0	.000	0	432,499
76/04/13	257	0	.000	0	479,144
78/04/25	223	0	.000	0	538,082

Gas Production - MCF/month



Cum: \_\_\_\_\_

Field: TALMAT GAS  
Operator: LEWIS B. BURLESON, INC.  
Well: Cook No. 2  
Location: P-28-255-37E  
County: LEA State: NM  
Date Prod. Began: Acres: