

Exhibits 1 through 7A  
Complete Set

EXHIBIT #1

NEW MEXICO OIL CONSERVATION COMMISSION  
WELL LOCATION AND ACREAGE DEDICATION PLAT

Form C-102  
Supersedes C-128  
Effective 1-1-65

All distances must be from the outer boundaries of the Section.

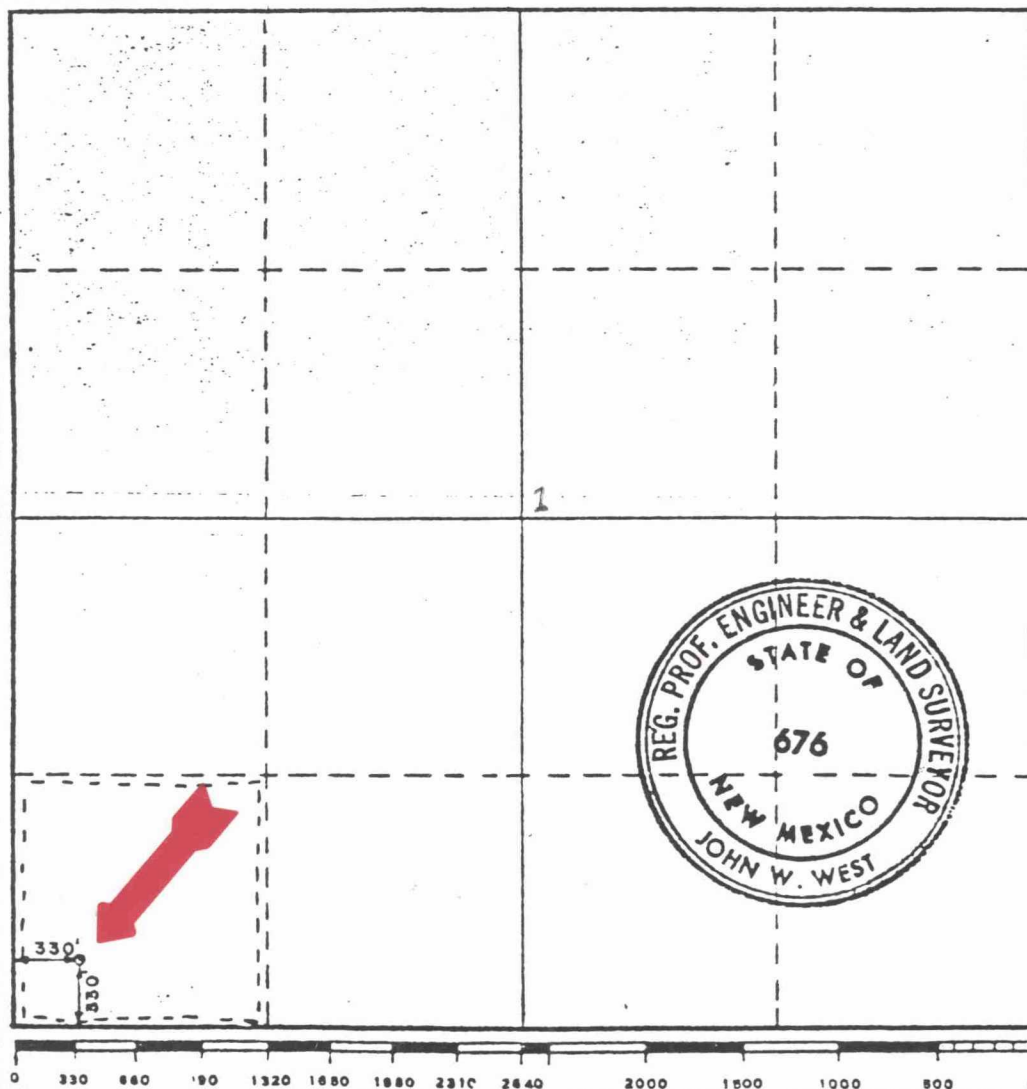
Operator <b>CONOCO, Inc.</b>		Lease <b>State F1</b>		Well No. <b>9</b>	
Unit Letter <b>M U</b>	Section <b>1</b>	Township <b>21 South</b>	Range <b>36 East</b>	County <b>Lea</b>	
Actual Footage Location of Well: <b>330</b> feet from the <b>South</b> line and <b>330</b> feet from the <b>West</b> line					
Ground Level Elev. <b>3520.5</b>	Producing Formation <b>BLINEBRY / DRINKARD</b>		Pool <b>HARDY BLINEBRY / HARDY DRINKARD</b>		Dedicated Acreage: <b>40</b> Acres

1. Outline the acreage dedicated to the subject well by colored pencil or hachure marks on the plat below.
2. If more than one lease is dedicated to the well, outline each and identify the ownership thereof (both as to working interest and royalty).
3. If more than one lease of different ownership is dedicated to the well, have the interests of all owners been consolidated by communitization, unitization, force-pooling, etc?

☐ Yes ☐ No If answer is "yes," type of consolidation \_\_\_\_\_

If answer is "no," list the owners and tract descriptions which have actually been consolidated. (Use reverse side of this form if necessary.) \_\_\_\_\_

No allowable will be assigned to the well until all interests have been consolidated (by communitization, unitization, forced-pooling, or otherwise) or until a non-standard unit, eliminating such interests, has been approved by the Commission.



CERTIFICATION

I hereby certify that the information contained herein is true and complete to the best of my knowledge and belief.

Name John A. Butterfield  
Position ADMINISTRATIVE SUPERVISOR  
Company CONOCO INC.  
Date 5/9/80

I hereby certify that the well location shown on this plat was plotted from field notes of actual surveys made by me or under my supervision, and that the same is true and correct to the best of my knowledge and belief.

Date Surveyed 5-5-1980  
Registered Professional Engineer and/or Land Surveyor John W. West  
Certificate No. JOHN W. WEST 676  
PATRICK A. ROMERO 6883  
Ronald J. Eldon 3239

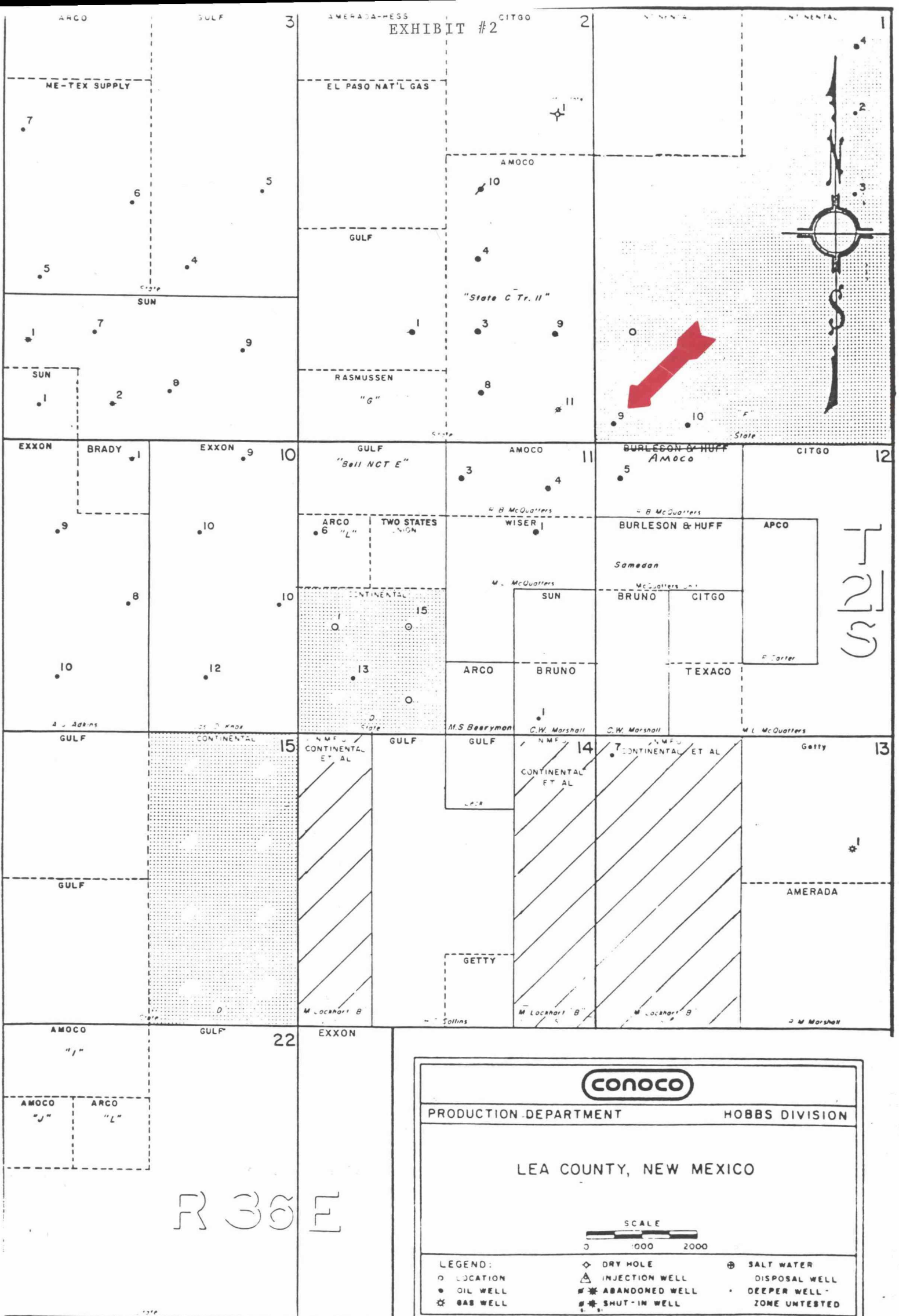
BEFORE EXAMINER STOGNER  
OIL CONSERVATION DIVISION

EXHIBIT NO. 1

CASE NO. 9471

Submitted by CONOCO INC.

Hearing Date 8-31-88



BEFORE EXAMINER STOGNER  
OIL CONSERVATION DIVISION

EXHIBIT NO. 2

CASE NO. 9471

Submitted by CONOCO INC.

Hearing Date 8-31-88

Operator Conoco Inc.		Pool Hardy Blinebry		County Lea											
Address P. O. Box 460, Hobbs, NM 88240		Type of Test - (X) <input checked="" type="checkbox"/> TEST - (X)		Scheduled <input type="checkbox"/> Special <input checked="" type="checkbox"/>											
LEASE NAME State F-1	WELL NO. 9	LOCATION U S T R 1 21S 36E			DATE OF TEST 4/13/88	STATUS P	CHOKE SIZE	TBG. PRESS.	DAILY ALLOW-ABLE	LENGTH OF TEST HOURS 24	PROD. DURING TEST			GAS - OIL RATIO CU. FT. / BBL.	
		WATER BBL.S.	GRAV. OIL BBL.S.	GAS M.C.F.											
											16	44.4	15	112	7466

No well will be assigned an allowable greater than the amount of oil produced on the official test.


During gas-oil ratio test, each well shall be produced at a rate not exceeding the top unit allowable for the pool in which well is located by more than 25 percent. Operator is encouraged to take advantage of this 25 percent tolerance in order that well can be assigned increased allowables when authorized by the Commission.

Gas volumes must be reported in MCF measured at a pressure base of 15.025 psia and a temperature of 60° F. Specific gravity base will be 0.60.

Report casing pressure in lieu of tubing pressure for any well producing through casing.

Mail original and one copy of this report to the district office of the New Mexico Oil Conservation Commission in accordance with Rule 301 and appropriate pool rules.

I hereby certify that the above information is true and complete to the best of my knowledge and belief.

  
(Signature)  
Administrative Supervisor  
D.F. Finney  
(Title)  
6/17/88  
(Date)

BEFORE EXAMINER SIGNER  
OIL CONSERVATION DIVISION

EXHIBIT NO. 3  
9471

Witnessed by Conoco Inc.  
Flowing Date 8-31-88

1,000

TYPE OF  
TEST - (X)

## Conclusion

## XIII

LEASE NAME	WELL NO.	LOCATION				DATE OF TEST	STATUS	CHOKE SIZE	TBG. PRESS.	DAILY ALLOW-ABLE	LENGTH OF TEST HOURS	PROD. DURING TEST			GAS - OIL RATIO CU.FT./BBL	
		U	S	T	R							WATER BBL.S.	GRAV. OIL	OIL BBL.S.		GAS M.C.F.
State F-1	9	U	1	21S	36E	3/6/88	P				24	88	44.4	6	58	7250

I hereby certify that the above information

is true and complete to the best of my knowledge and belief.

100

1

*Handwritten:* D. F. Finney

Administrative Supervisor

**Signature**

D.F. Finney

Title,

51788

There,

BEFORE EXAMINER STOCKER  
OIL CONSERVATION DIVISION

2017.07.20

00

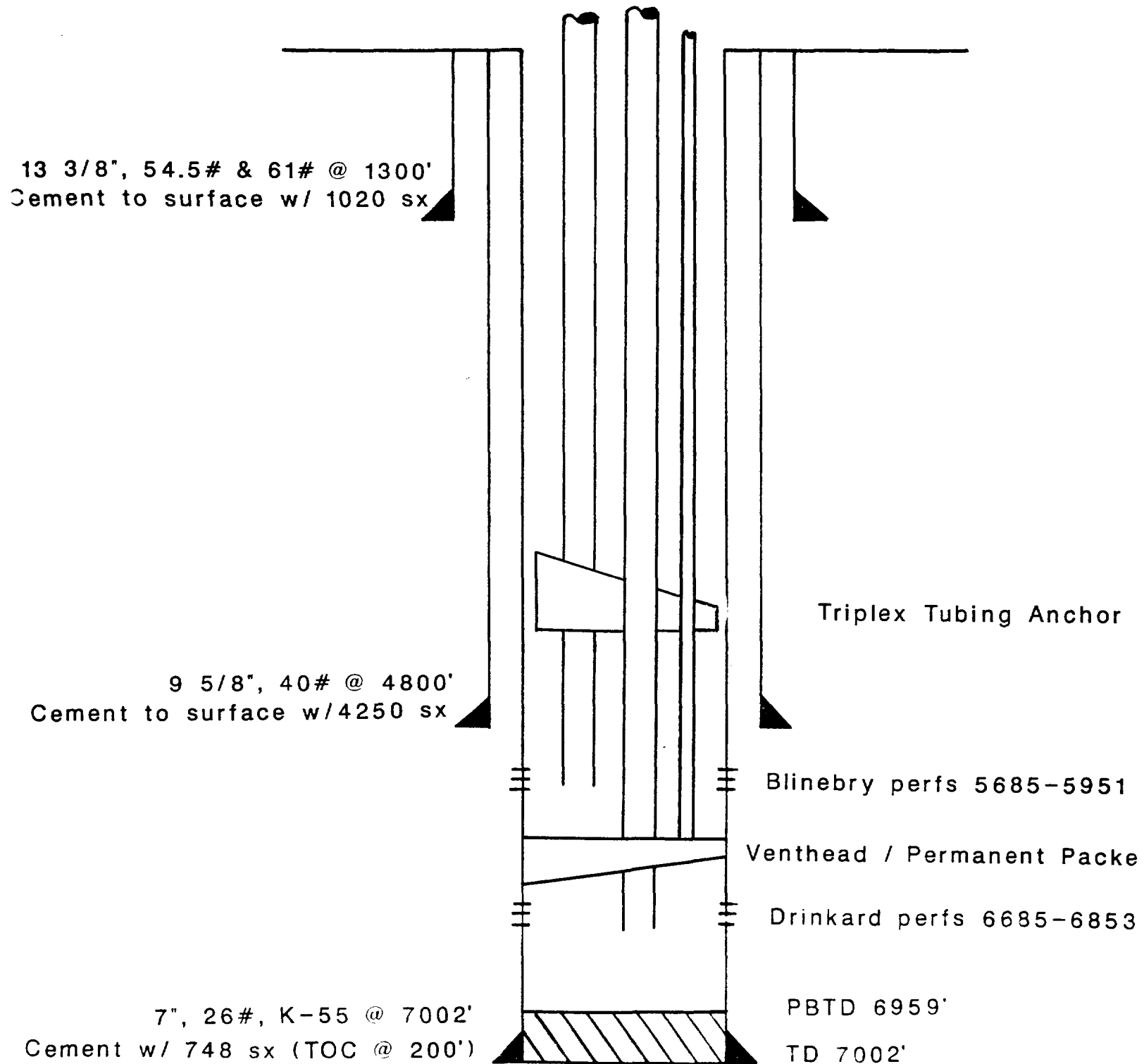
Conoco Inc.

Flowering Date

8-31-88

# State F-1 No. 9

## Previous Dual Completion Wellbore Diagram



WELLBORE EXAMINER SIGNATURE  
AND CONSERVATION DIVISION

WELLBORE NO. 4

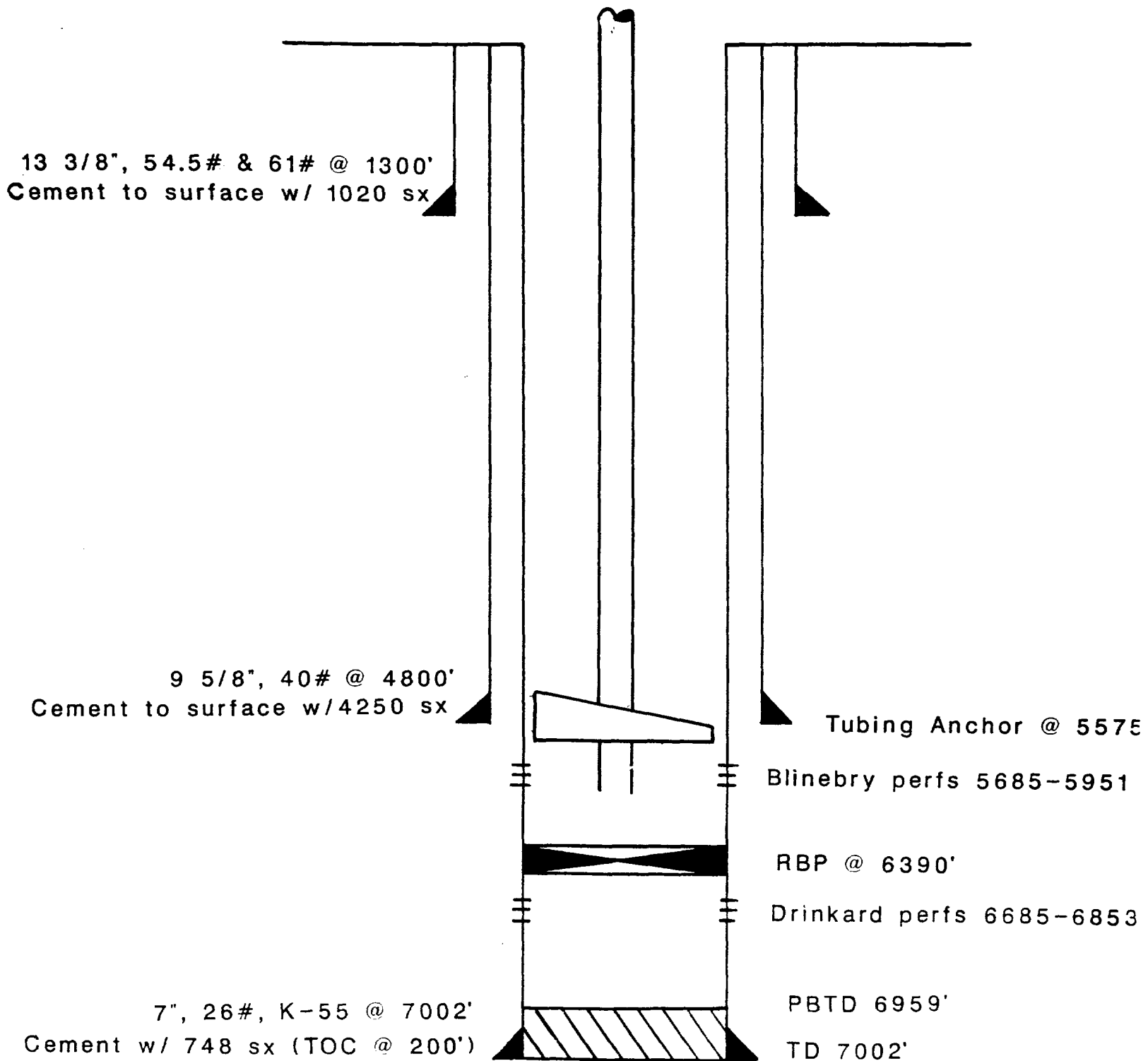
9471

Conoco Inc.

Date 8-31-88

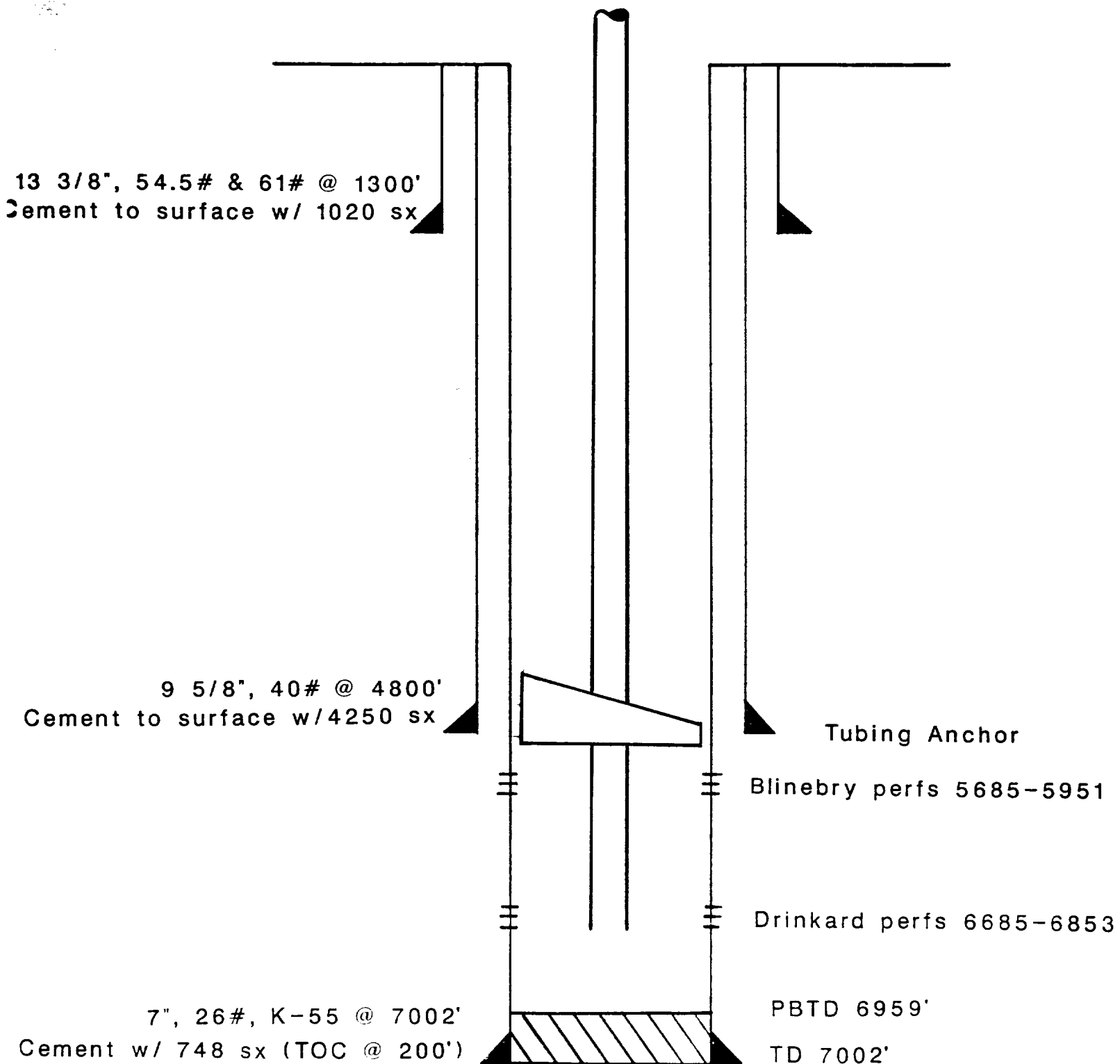


Current Single Completion Wellbore Diagram



BEFORE EXAMINER STOGNER	
OIL CONSERVATION DIVISION	
EXHIBIT NO.	5
DATE NO.	9471
Submitted by	Conoco Inc.
Receiving Date	8-31-88

Proposed Commingled Completion Wellbore Diagram

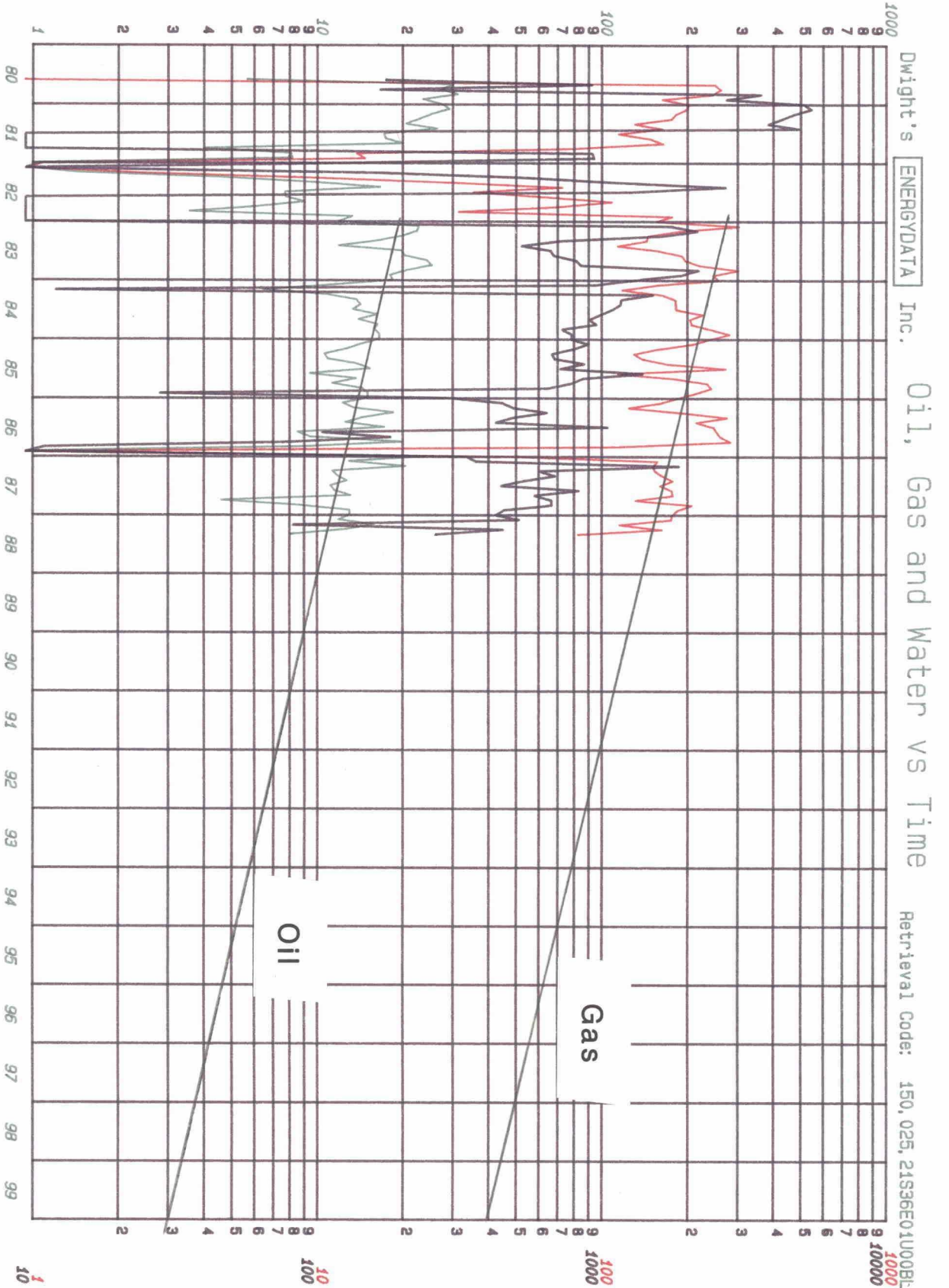


BEFORE EXAMINER STOGNER OIL CONSERVATION DIVISION	
EXHIBIT NO.	6
CASE NO.	9471
FILED BY	CONOCO INC.
DATE	8-31-88

# DAILY OIL PRODUCTION (BBL/DAY)

## LEGEND

OIL —  
GAS —  
WATER —



WATER (BBL/MO) DAILY GAS PRODUCTION (MCF/DAY)

Lease: STATE F 1  
Well #: 000009  
Operator: CONOCO INC  
Field: HARDY BLINERY  
Reservoir: LEA  
County: LEA  
Location: 1 21S 36E NW

BL

Date: 08-23-88

BEFORE EXAMINER STOGNER  
OIL CONSERVATION DIVISION

EXHIBIT NO. 7

CASE NO. 9471

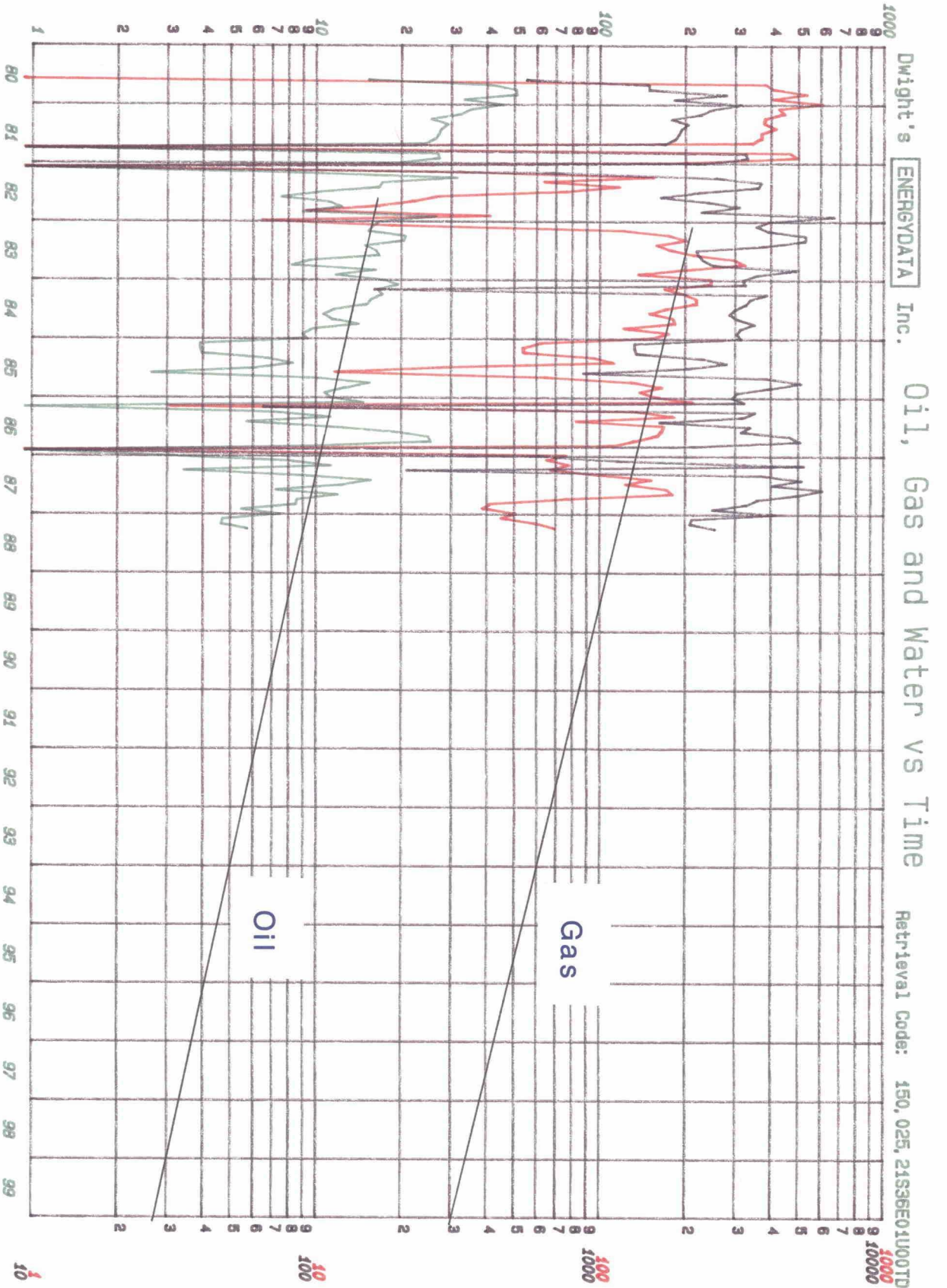
Submitted by Conoco Inc.

Hearing Date 8/31/88

Exhibits 1 through 2A



# DAILY OIL PRODUCTION (BBL/DAY)



WATER (BBL/MO)

DAILY GAS PRODUCTION

(MCF/DAY)

## LEGEND

OIL —  
GAS —  
WATER —

Lease: STATE F 1  
Well #: 000009  
Operator: CONOCO INC  
Field: HARDY DRINKARD  
Reservoir: LEA  
County: LEA  
Location: 1 21S 36E NW

DR

Date: 08-29-88

BEFORE EXAMINER STOGNER  
OIL CONSERVATION DIVISION

EXHIBIT NO. 7A

CASE NO. 9471

Submitted by Conoco Inc.

Hearing Date 8/31/88

## EXHIBIT #1

NEW MEXICO OIL CONSERVATION COMMISSION  
WELL LOCATION AND ACREAGE DEDICATION PLATForm C-102  
Supersedes C-128  
Effective 1-1-65

All distances must be from the outer boundaries of the Section.

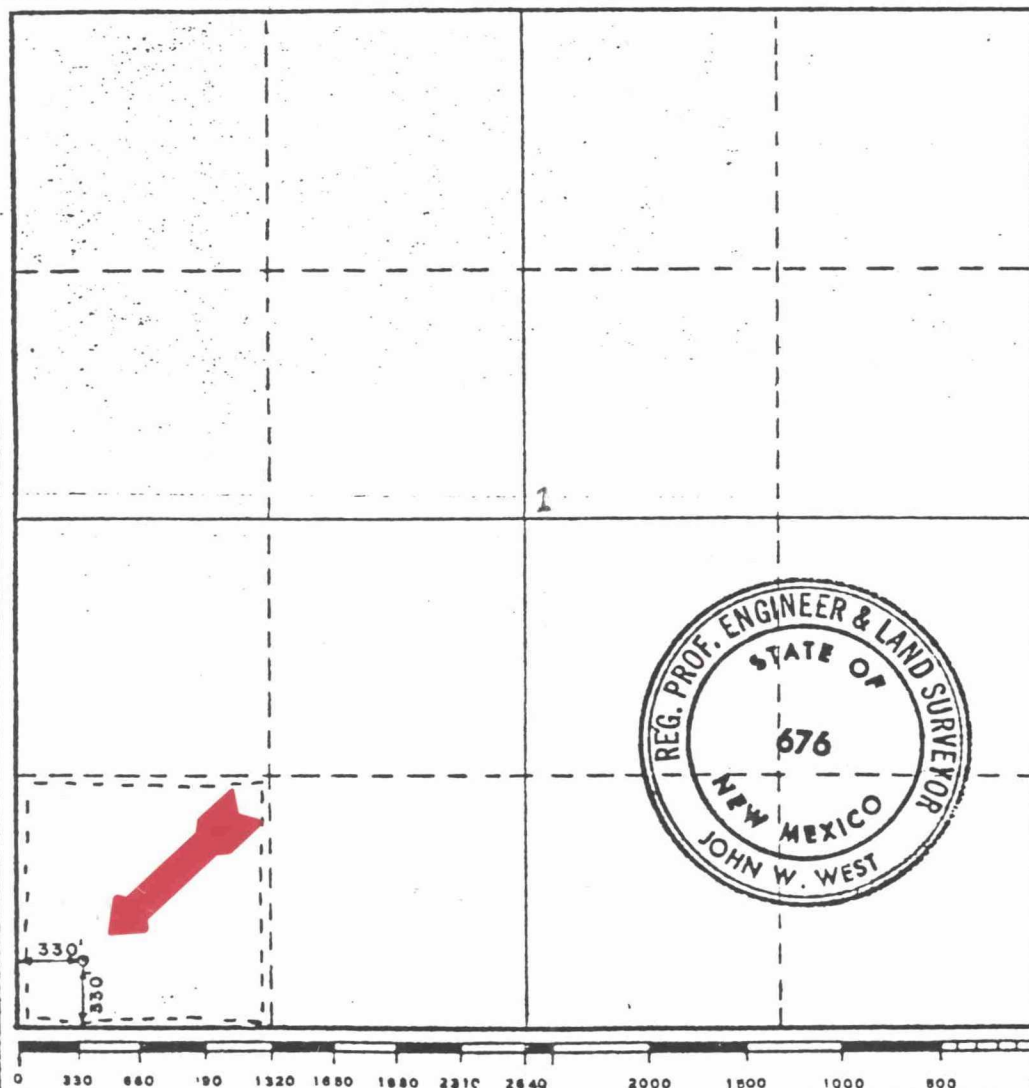
Operator <b>CONOCO, Inc.</b>			Lease <b>State F1</b>		Well No. <b>9</b>
Unit Letter <b>M U</b>	Section <b>1</b>	Township <b>21 South</b>	Range <b>36 East</b>	County <b>Lea</b>	
Actual Footage Location of Well: <b>330</b> feet from the <b>South</b> line and <b>330</b> feet from the <b>West</b> line					
Ground Level Elev. <b>3520.5</b>	Producing Formation <b>BLINEBRY / DRINKARD</b>		Pool <b>HARDY BLINEBRY / HARDY DRINKARD TUBB</b>	Dedicated Acreage: <b>40</b> Acres	

1. Outline the acreage dedicated to the subject well by colored pencil or hatchure marks on the plat below.
2. If more than one lease is dedicated to the well, outline each and identify the ownership thereof (both as to working interest and royalty).
3. If more than one lease of different ownership is dedicated to the well, have the interests of all owners been consolidated by communitization, unitization, force-pooling, etc?

☐ Yes ☐ No If answer is "yes," type of consolidation \_\_\_\_\_

If answer is "no," list the owners and tract descriptions which have actually been consolidated. (Use reverse side of this form if necessary.) \_\_\_\_\_

No allowable will be assigned to the well until all interests have been consolidated (by communitization, unitization, forced-pooling, or otherwise) or until a non-standard unit, eliminating such interests, has been approved by the Commission.



## CERTIFICATION

I hereby certify that the information contained herein is true and complete to the best of my knowledge and belief.

Name John A. Butterfield  
Position ADMINISTRATIVE SUPERVISOR  
Company CONOCO INC.  
Date 5/9/80

I hereby certify that the well location shown on this plat was plotted from field notes of actual surveys made by me or under my supervision, and that the same is true and correct to the best of my knowledge and belief.

Date Surveyed 5-5-1980

Registered Professional Engineer and/or Land Surveyor

John W. West  
Certificate No. JOHN W. WEST 676  
PATRICK A. ROMERO 6883  
Ronald J. Eidson 3239

BEFORE EXAMINER STOGNER  
OIL CONSERVATION DIVISION

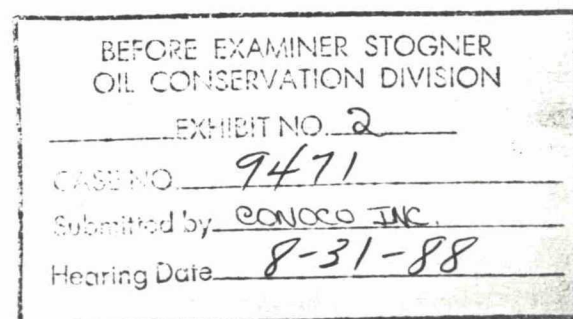
EXHIBIT NO. 1

CASE NO. 9471

Submitted by CONOCO INC.

Hearing Date 8-31-88





Operator <b>Conoco Inc.</b>		Pool <b>Hardy Blinebry</b>		County <b>Lea</b>											
Address <b>P. O. Box 460, Hobbs, NM 88240</b>		Type of Test - (X) <input type="checkbox"/> TEST - (X)		Scheduled <input type="checkbox"/> Special <input checked="" type="checkbox"/>											
LEASE NAME <b>State F-1</b>	WELL NO. <b>9</b>	LOCATION			DATE OF TEST <b>4/13/88</b>	STATUS <b>P</b>	CHOKE SIZE	TBG. PRESS.	DAILY ALLOW-ABLE	LENGTH OF TEST HOURS <b>24</b>	PROD. DURING TEST				GAS - OIL RATIO CU. FT. BBL.
		U	S	T							R	WATER BBL.S.	GRAV. OIL	OIL BBL.S.	
											<b>16</b>	<b>44.4</b>	<b>15</b>	<b>112</b>	<b>7466</b>

No well will be assigned an allowable greater than the amount of oil produced on the official test.


During gas-oil ratio test, each well shall be produced at a rate not exceeding the top unit allowable for the pool in which well is located by more than 25 percent. Operator is encouraged to take advantage of this 25 percent tolerance in order that well can be assigned increased allowables when authorized by the Commission.

Gas volumes must be reported in MCF measured at a pressure base of 15.025 psia and a temperature of 60° F. Specific gravity base will be 0.60.

Report casing pressure in lieu of tubing pressure for any well producing through casing.

Mail original and one copy of this report to the district office of the New Mexico Oil Conservation Commission in accordance with Rule 301 and appropriate pool rules.

I hereby certify that the above information is true and complete to the best of my knowledge and belief.

  
(Signature)  
**D.F. Finney**  
Administrative Supervisor  
(Title)  
**6/17/88**  
(Date)

BEFORE EXAMINER STOGNER OIL CONSERVATION DIVISION	
EXHIBIT NO. <b>3</b>	
CASE NO. <b>9471</b>	
Submitted by <b>Conoco Inc</b>	
Hearing Date <b>8-31-88</b>	

Hardy Tubb Drinkard

TYPE OF TEST - (X)

I, Cn

# Index

LEASE NAME	WELL NO.	LOCATION				DATE OF TEST	STATUS	CHOKE SIZE	TBG. PRESS.	DAILY ALLOW-ABLE	LENGTH OF TEST HOURS	PROD. DURING TEST				GAS - OIL RATIO CU.FT./BBL.
		U	S	T	R							WATER BBL'S.	GRAV. OIL BBL'S.	OIL BBL'S.	GAS M.C.F.	
State F-1	9	U	1	21S	36E	3/6/88	P				24	88	44.4	6	58	7250

No well will be assigned an allowable greater than the amount of oil produced on the official test.

During gas-oil-sensitivity test, each well shall be produced at a rate not exceeding the top unit allowable for the pool in which it well is located by more than 25 percent. Operator is encouraged to take advantage of this 25 percent tolerance in order that well can be assigned increased allowables when authorized by the Commission.

Gas volumes must be reported in MCF measured at a pressure base of 15.025 psia and a temperature of 60° F. Specific gravity base will be 0.60.

**Report casing pressure in lieu of tubing pressure for any well producing through casing**

**Mult original and one copy of this report to the district office of the New Mexico Oil Conservation Commission in accordance with Rule 301 and appropriate pool rules.**

I hereby certify that the above information is true and complete to the best of my knowledge and belief.

*[Signature]*  
D. F. Finney

Administrative Supervisor

61788

(1)ure

BEFORE EXAMINER STOGNER  
OIL CONSERVATION DIVISION

EXHIBIT NO. 34

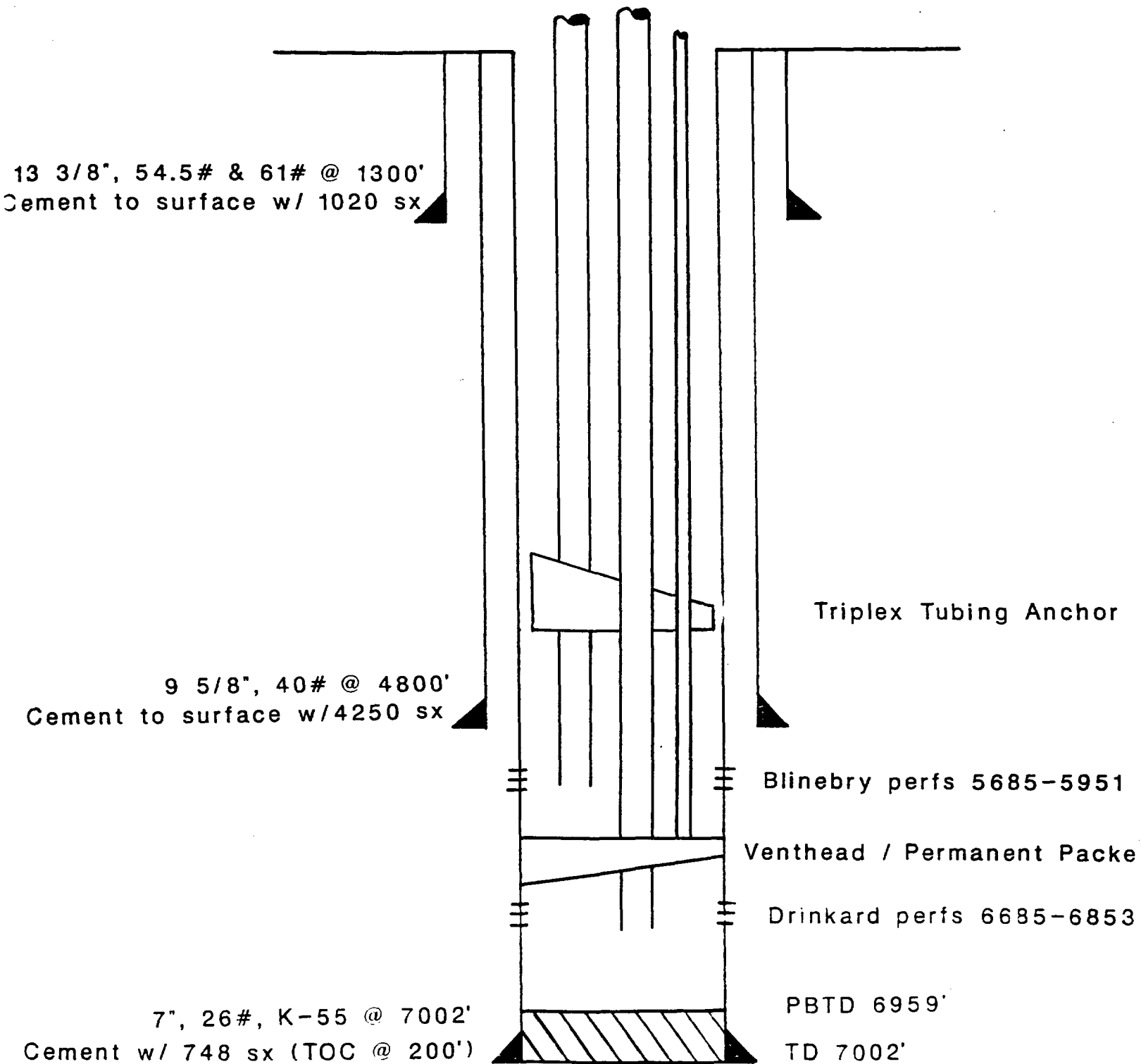
Case NO. 7411

Submitted by Conoco Inc

Hearing Date 0 7 00

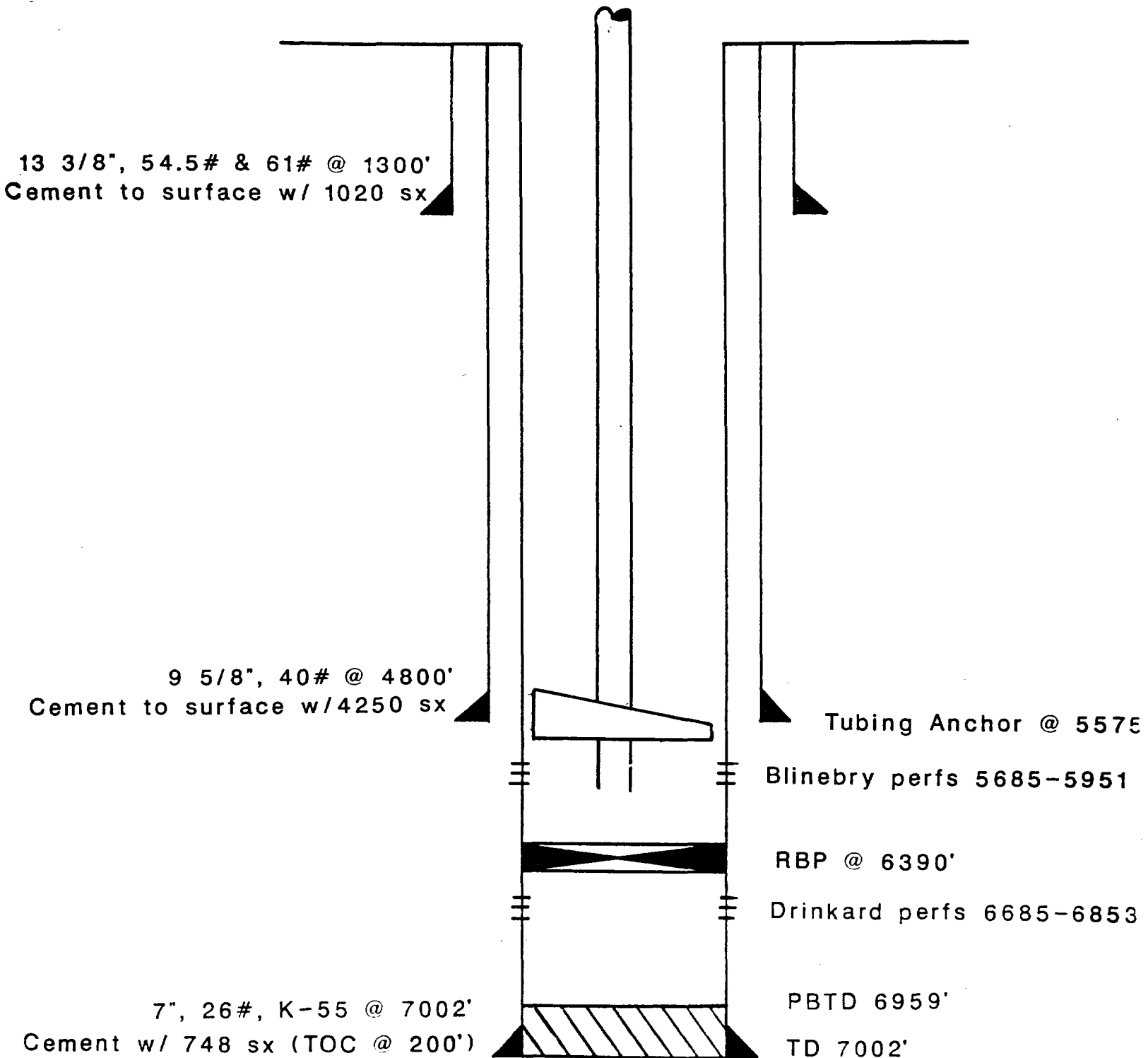


Previous Dual Completion Wellbore Diagram



BEFORE EXAMINER STOGNER OIL CONSERVATION DIVISION	
EXHIBIT NO.	4
CASE NO.	9471
Submitted by	Conoco Inc.
Hearing Date	8-31-88

Current Single Completion Wellbore Diagram



BEFORE EXAMINER STOGNER  
OIL CONSERVATION DIVISION

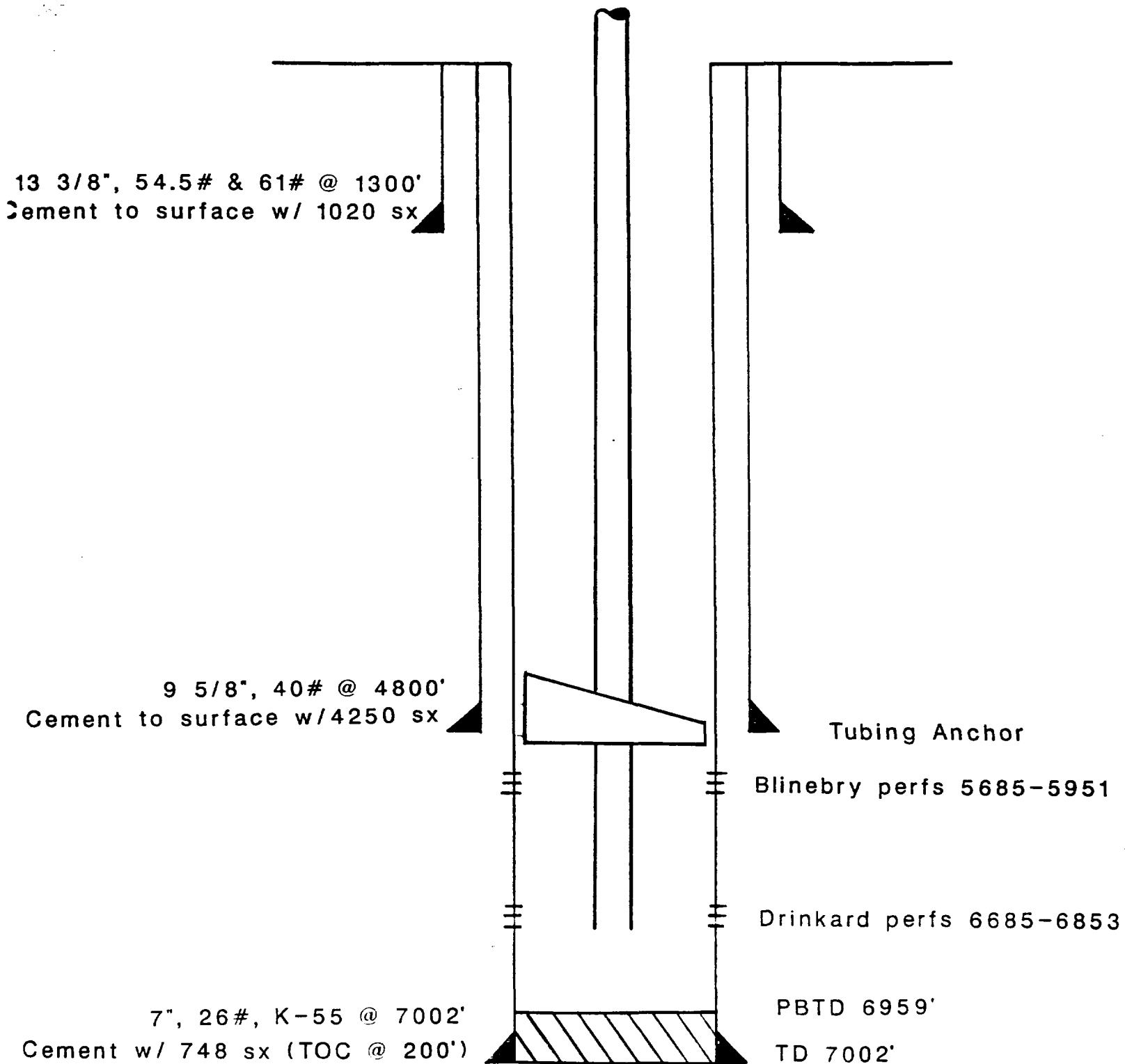
EXHIBIT NO. 5

CASE NO. 9471

Submitted by Conoco Inc.

Hearing Date 8-31-88

Proposed Commingled Completion Wellbore Diagram



BEFORE EXAMINER STOGNER  
OIL CONSERVATION DIVISION

EXHIBIT NO. 6

CASE NO. 9471

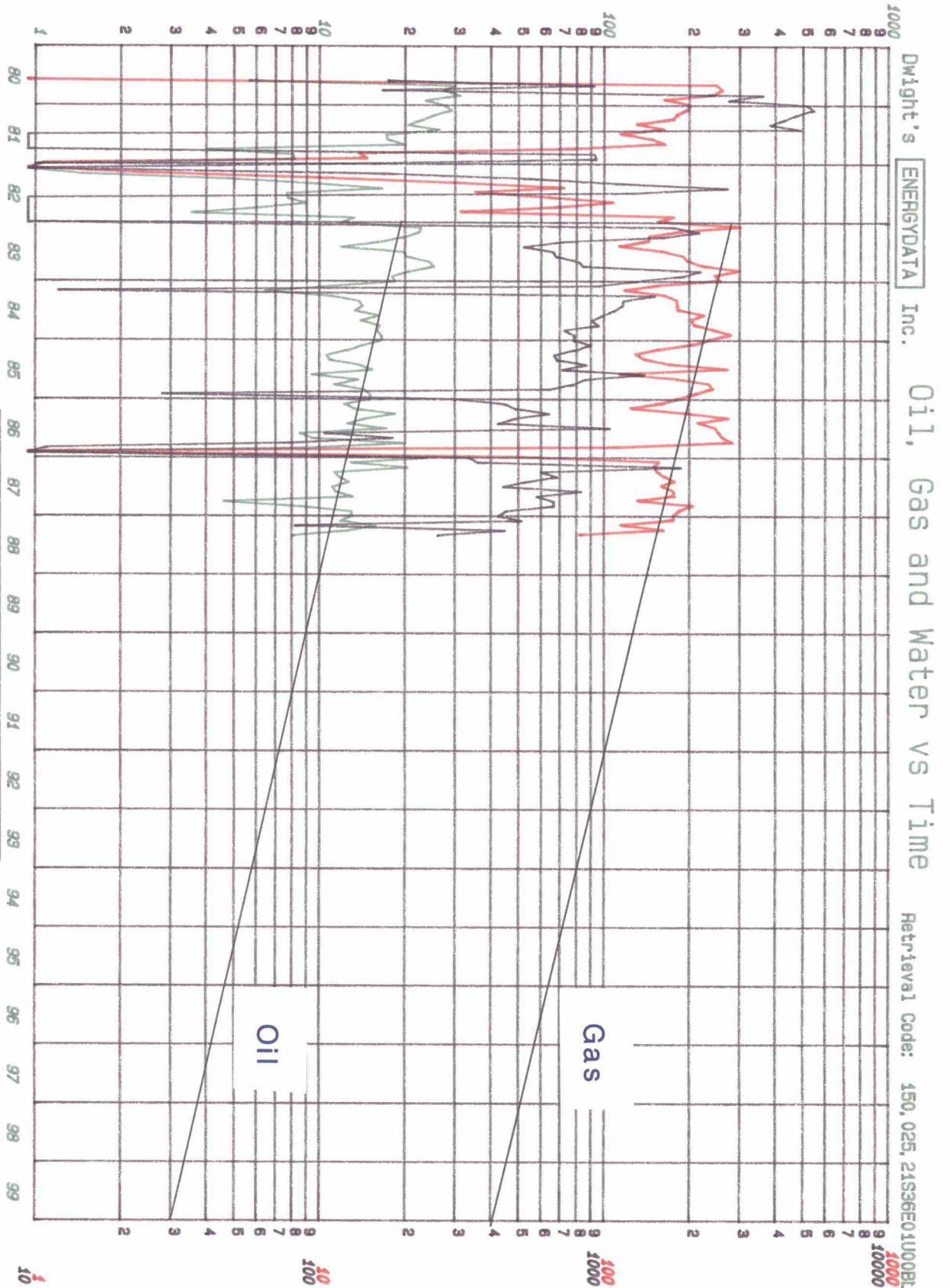
Submitted by CONOCO INC.

Hearing Date 8-31-88

# DAILY OIL PRODUCTION (BBL/DAY)

## LEGEND

OIL —  
GAS —  
WATER —



WATER (BBL/MO) DAILY GAS PRODUCTION (MCF/DAY)

Lease: STATE F 1  
Well #: 000009  
Operator: CONOCO INC  
Field: HARDY BLINERY  
Reservoir: LEA  
County: LEA  
Location: 1 21S 36E NW

BL

Date: 08-29-88

BEFORE EXAMINER STOGNER  
OIL CONSERVATION DIVISION

EXHIBIT NO. 7

CASE NO. 9471

Submitted by Conoco Inc.

Hearing Date 8/31/88

# DAILY OIL PRODUCTION (BBL/DAY)

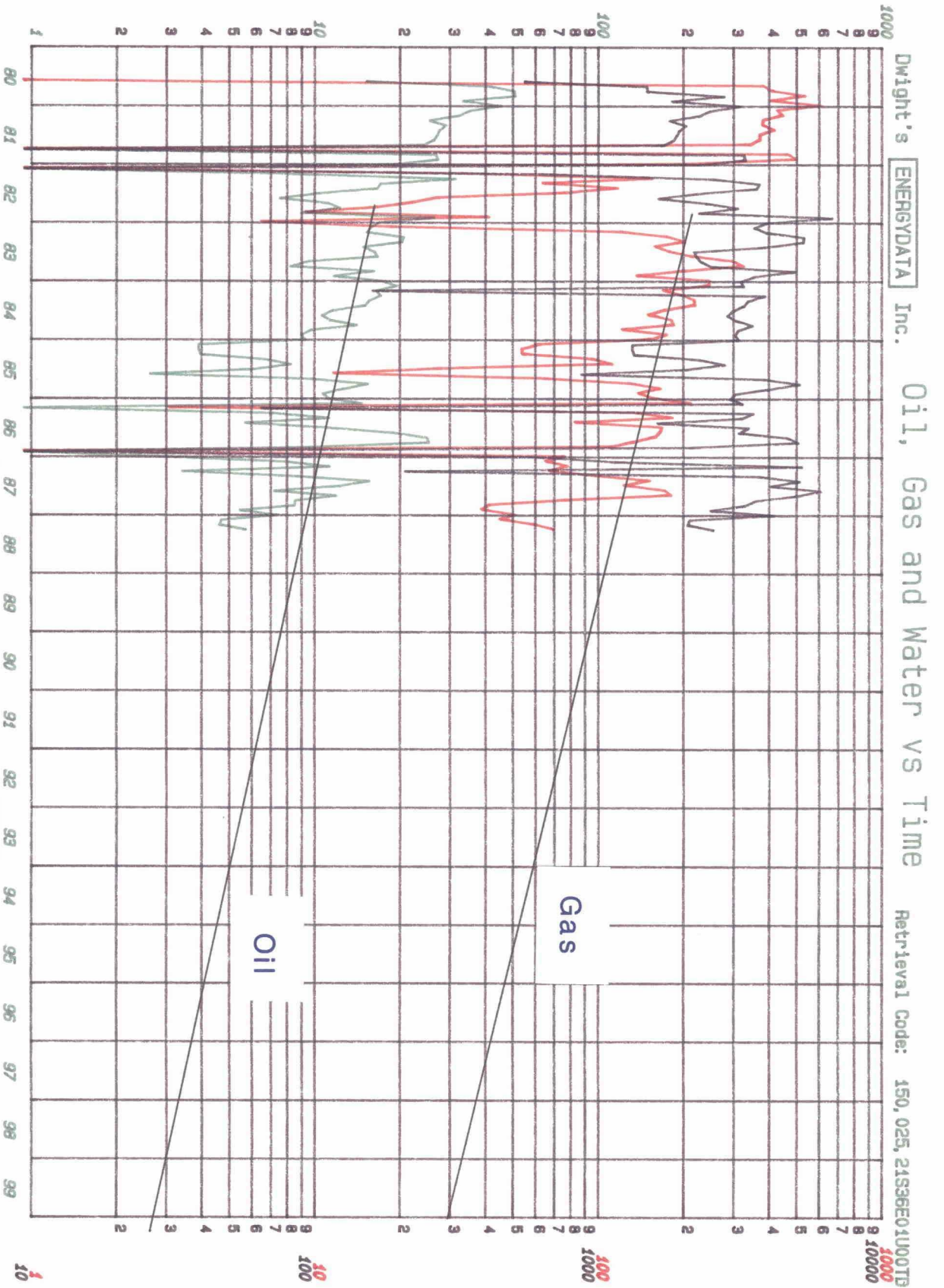
## LEGEND

OIL —  
GAS —  
WATER —

Lease: STATE F 1  
Well #: 000009  
Operator: CONOCO INC  
Field: HARDY DRINKARD  
Reservoir: LEA  
County: LEA  
Location: 1 21S 36E NW

DR

Date: 08-29-88



WATER (BBL/MO)

DAILY GAS PRODUCTION

(MCF/DAY)

BEFORE EXAMINER STOGNER  
OIL CONSERVATION DIVISION

EXHIBIT NO. 7A

CASE NO. 9471

Submitted by Conoco Inc.

Hearing Date 8/31/88