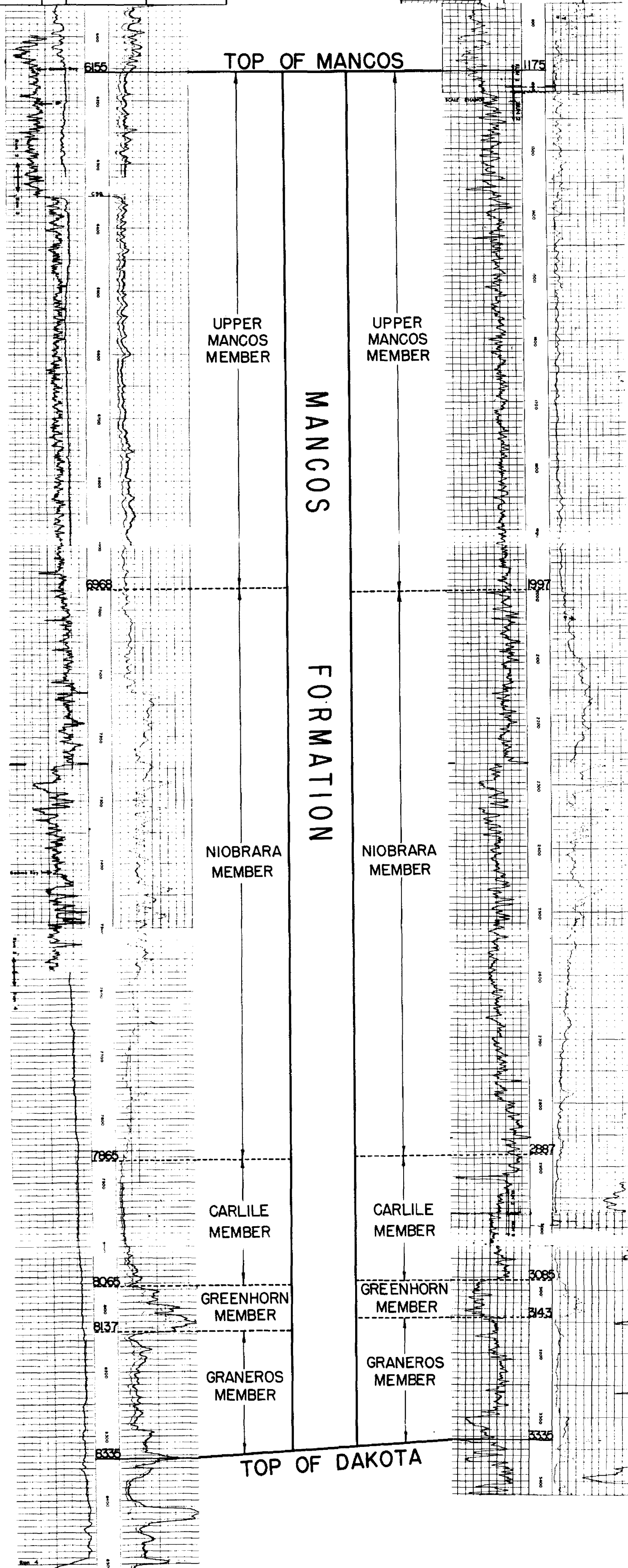
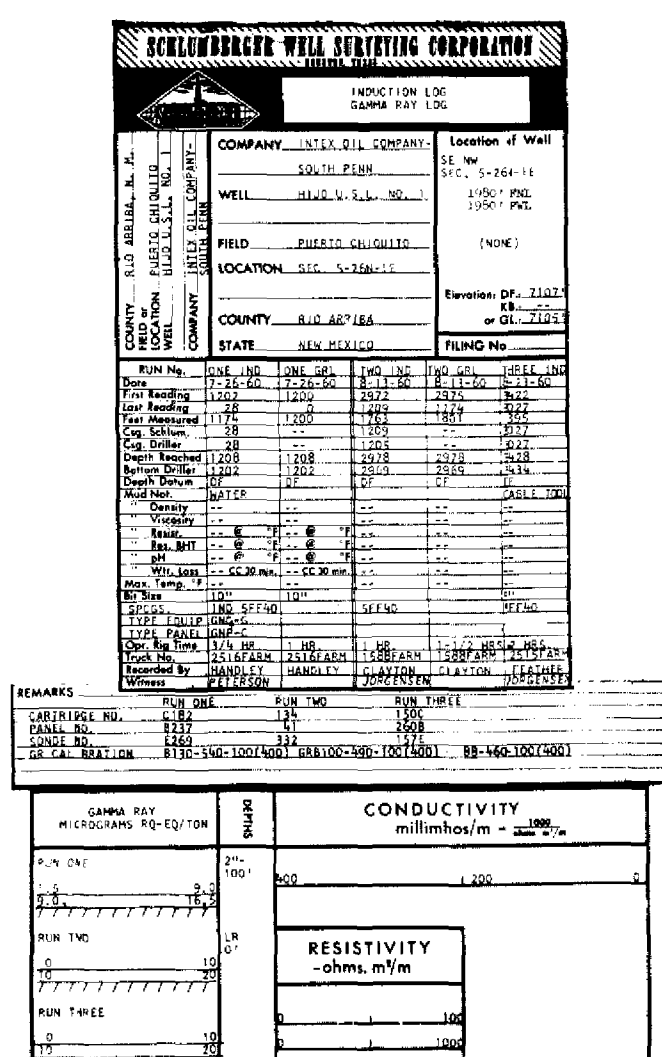
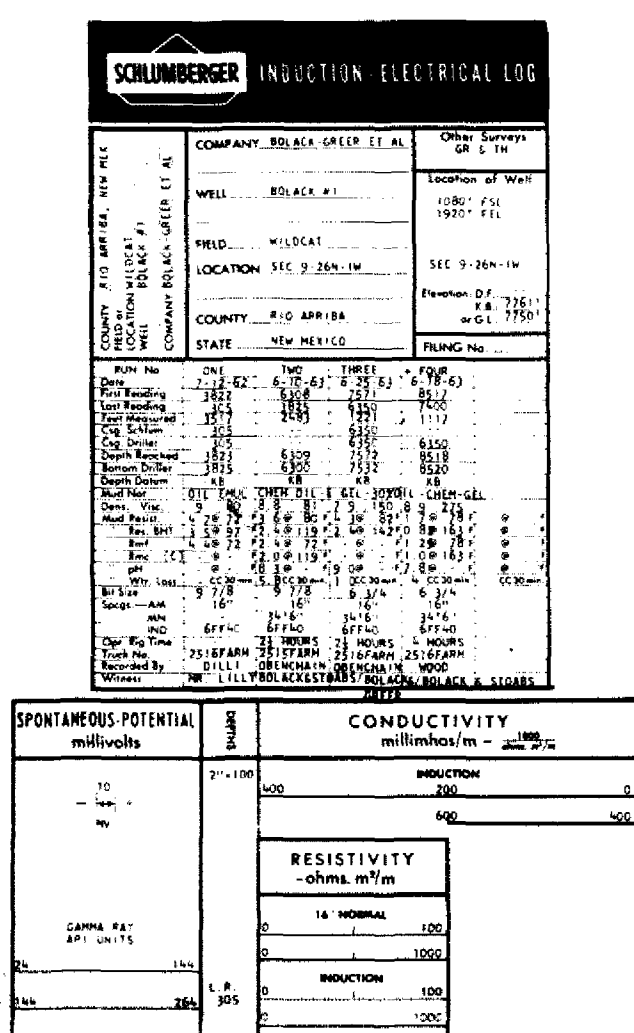


**BOLACK - GREER**  
**#1 BOLACK**  
 1080' F/SL 1920' F/EL SEC. 9-26N-1W

**INTEX OIL COMPANY**  
**#1 HIJO**  
 1980' F/NL 1980' F/WL SEC. 5-26N-1E



**LEGEND**  
 SECTIONS OF TYPICAL LOGS  
 SHOWING FORMATION TOPS OF MANCOS AND DAKOTA  
 AND  
 MEMBERS OF MANCOS FORMATION