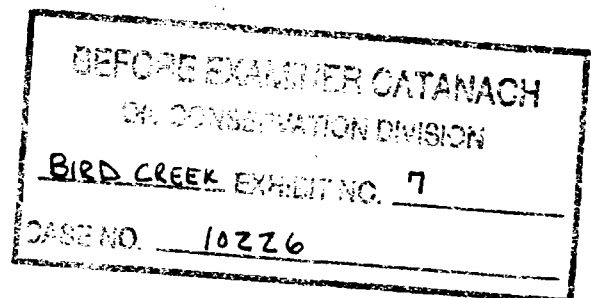
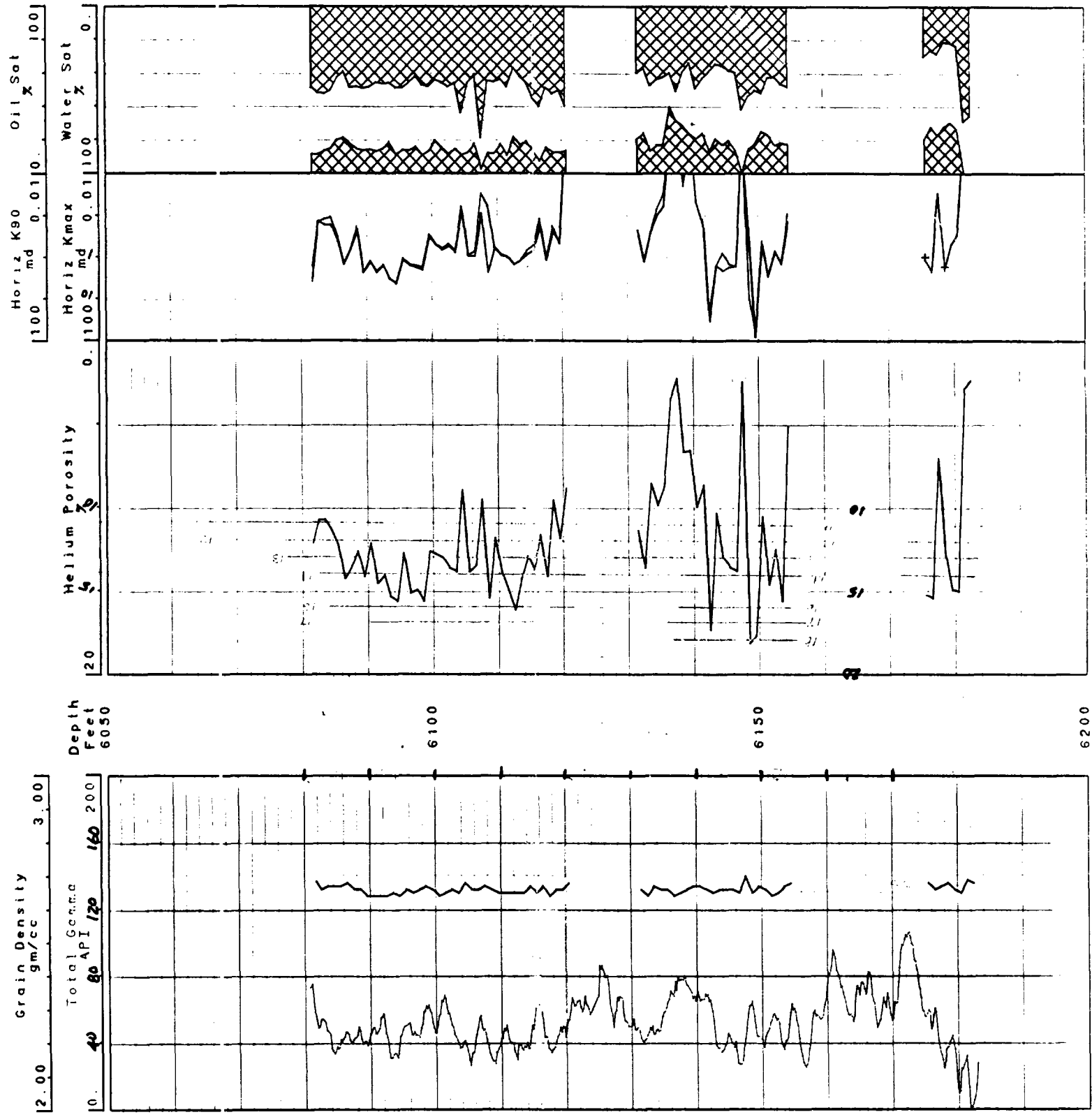


CORE ANALYSIS REPORT
FOR
BIRD CREEK RESOURCES
R.G.A. NO. 3
EAST LOVING DELAWARE FIELD
EDDY COUNTY, NEW MEXICO

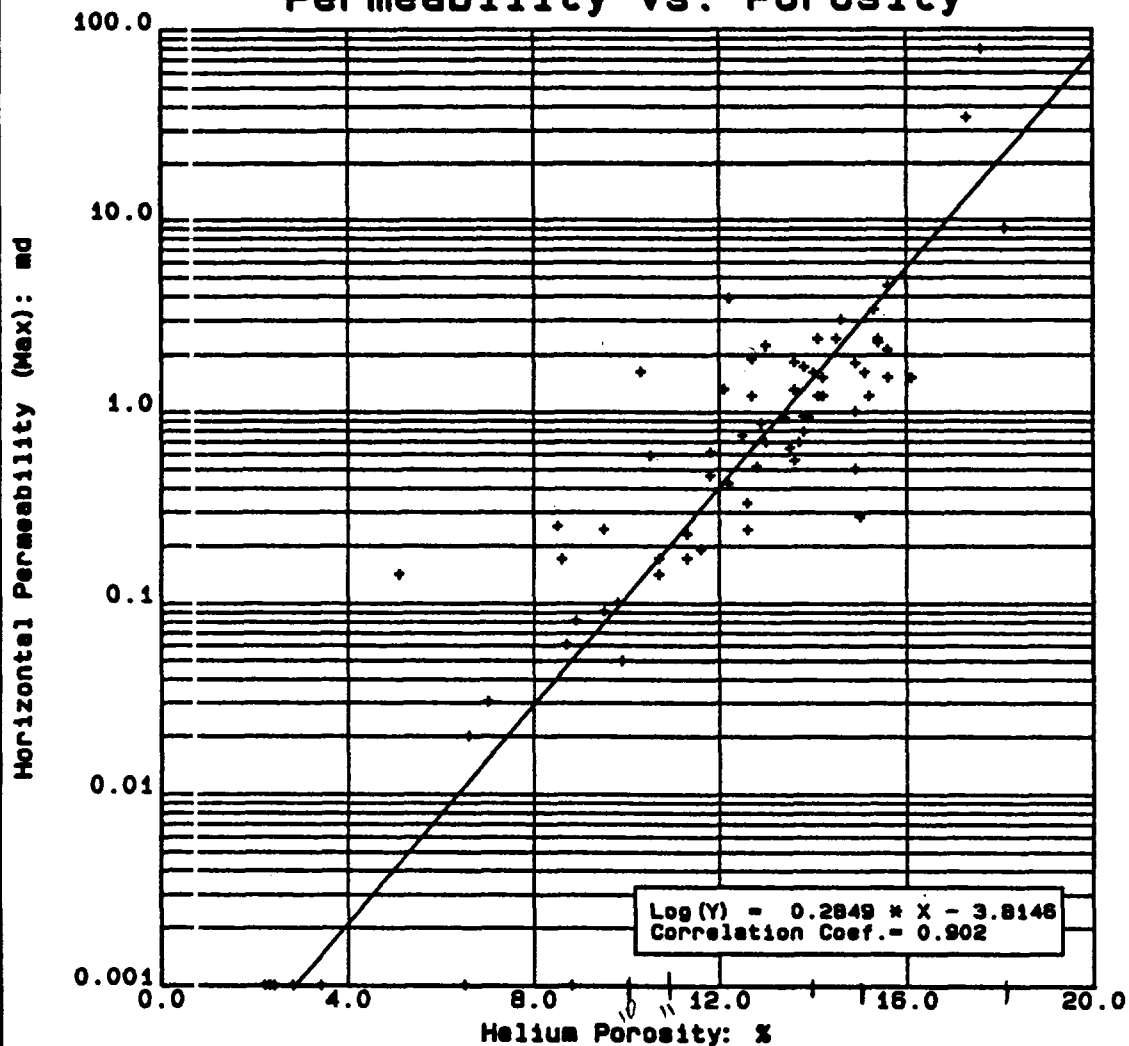
PRELIMINARY PRINT



These analyses, opinions or interpretations are based on observations and materials supplied by the client to whom; and for whose exclusive and confidential use; this report is made. The interpretations or opinions expressed represent the best judgment of Core Laboratories (all errors and omissions excepted); but Core Laboratories and its officers and employees, assume no responsibility and make no warranty or representations, as to the productivity, proper operations, or profitability of any oil, gas or other mineral well or formation in connection with which such report is used or relied upon.



Permeability vs. Porosity



BIRD CREEK RESOURCES
R.G.A. NO. 3
EAST LOVING DELAWARE FIELD

(DELAWARE (6081-6183 feet))

Core Laboratories

8-19-90

- LEGEND -
DELAWARE