

Before The  
OIL CONSERVATION COMMISSION  
Santa Fe, New Mexico  
Case No. 10443 Exhibit No. 2  
Submitted by: Marathon Oil Company  
Hearing Date: 3/05/92

  
MARATHON OIL COMPANY  
MID-CONTINENT REGION

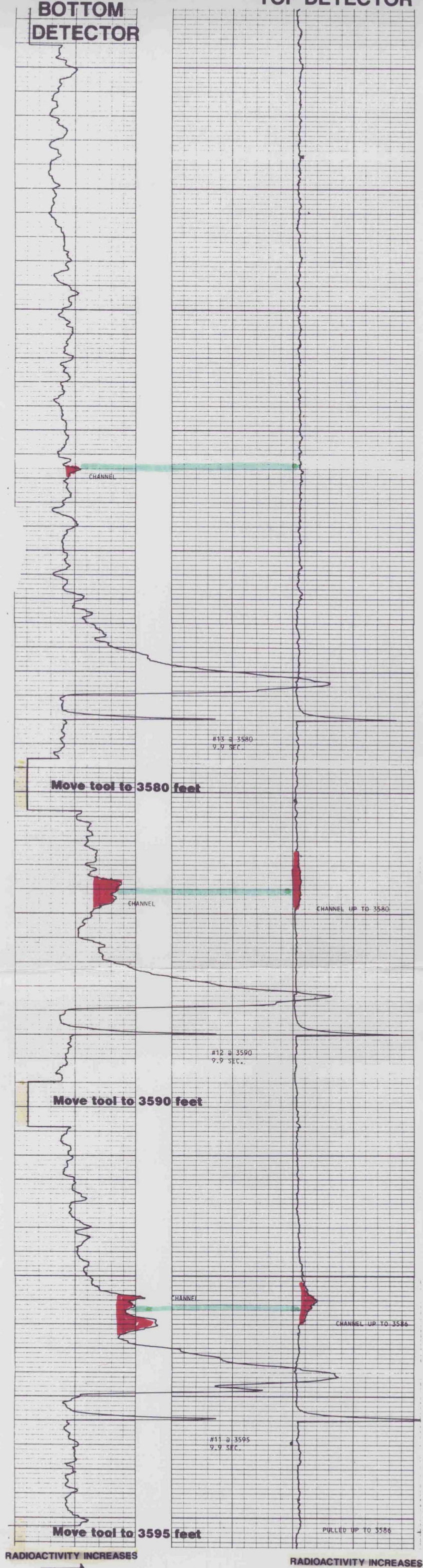
**SOUTH EUNICE POOL**  
LEA COUNTY, NEW MEXICO

MCDONALD STATE ACCT LEASE, SECTION 16, T-22-S, R-36-E

**WELL 30**

**INJECTIVITY PROFILE (TEMPERATURE) LOG**  
(HOLMES WIRELINE SERVICE)

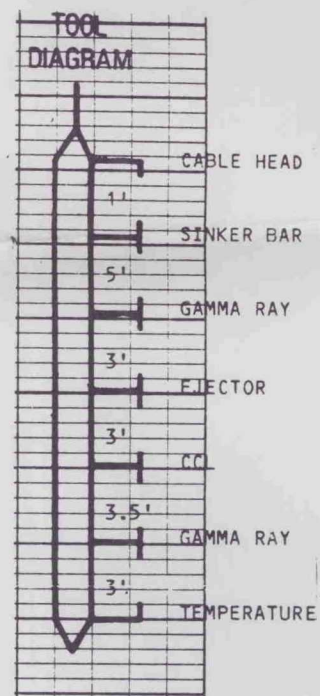
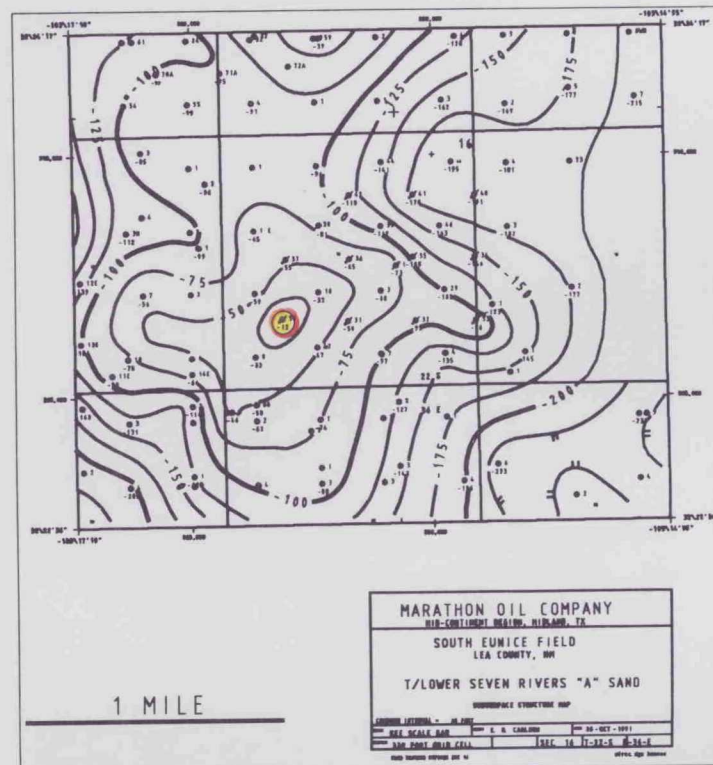
DEC 1981



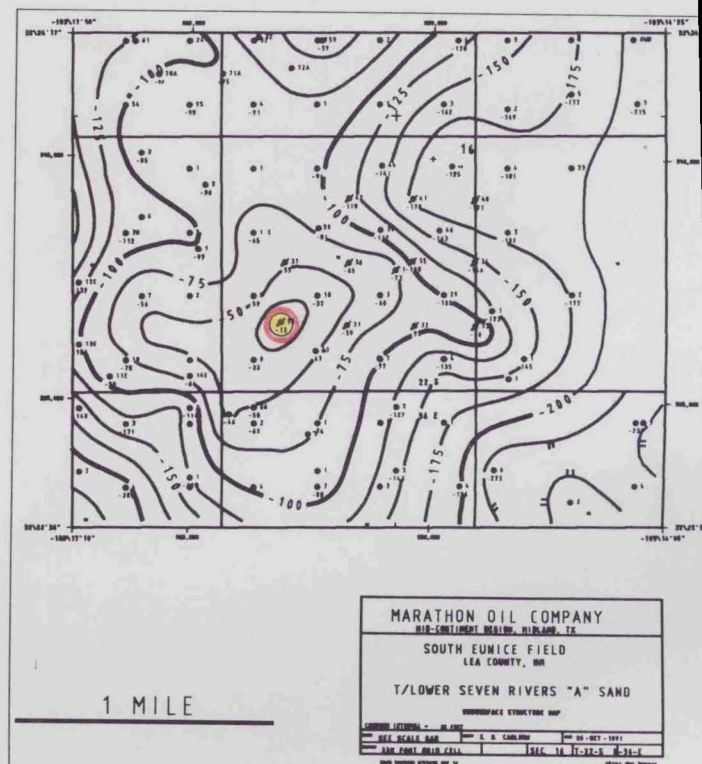
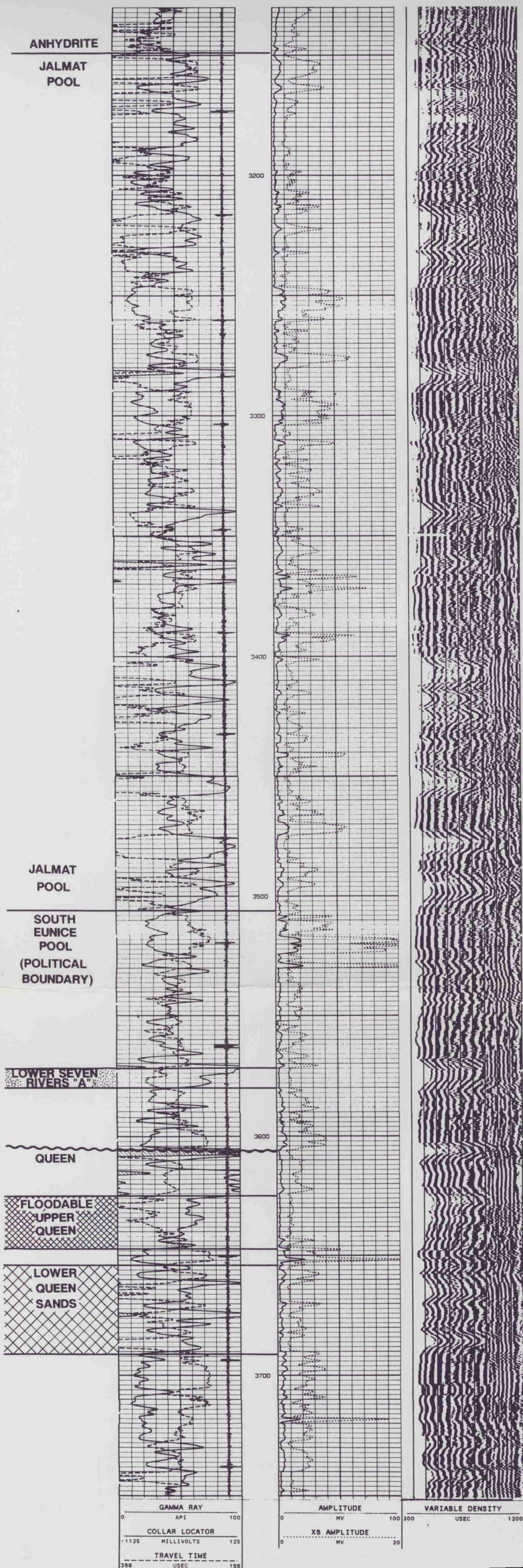
INCREASING TIME (LATER IN DAY)



Before The  
OIL CONSERVATION COMMISSION  
Santa Fe, New Mexico  
Case No. 10443 Exhibit No. 3  
Submitted by: Marathon Oil Company  
Hearing Date: 3/05/92



|                                                                                                                                                                                                                     |
|---------------------------------------------------------------------------------------------------------------------------------------------------------------------------------------------------------------------|
| <br><b>MARATHON OIL COMPANY</b><br>MID-CONTINENT REGION                                                                        |
| <b>SOUTH EUNICE POOL</b><br>LEA COUNTY, NEW MEXICO<br>McDONALD STATE ACC'T 1 LEASE, SEC. 16, T-22-S, R-36-E<br><b>WELL 30</b><br><b>CHANNEL CHECK LOG</b><br>MEASURING IODINE TRACER RADIOACTIVITY<br>DEC. 19, 1991 |



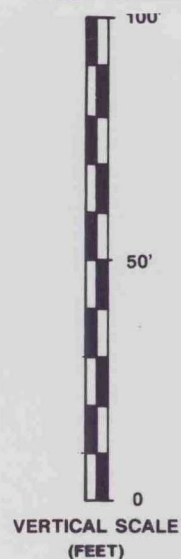
MARATHON OIL COMPANY  
MID-CONTINENT REGION

**SOUTH EUNICE POOL**  
LEA COUNTY, NEW MEXICO

MCDONALD STATE ACC'T LEASE, SECTION 16, T-22-S, R-36-E

**WELL 30**  
**CEMENT BOND LOG**  
(WEDGE WIRELINE INC.)

SEPT. 16, 1991



Before The  
OIL CONSERVATION COMMISSION  
Santa Fe, New Mexico  
Case No. 10443 Exhibit No. 4  
Submitted by: Marathon Oil Company  
Hearing Date: 3/05/92