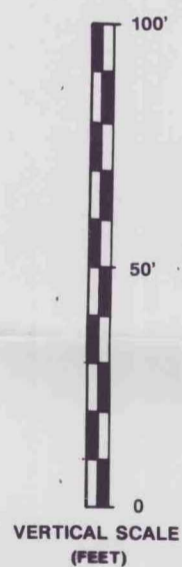


One hour gtr
well shot in



Before The
OIL CONSERVATION COMMISSION
Santa Fe, New Mexico
Case No. 10443 Exhibit No. 2
Submitted by: Marathon Oil Company
Hearing Date: 3/05/92


MARATHON OIL COMPANY
MID-CONTINENT REGION

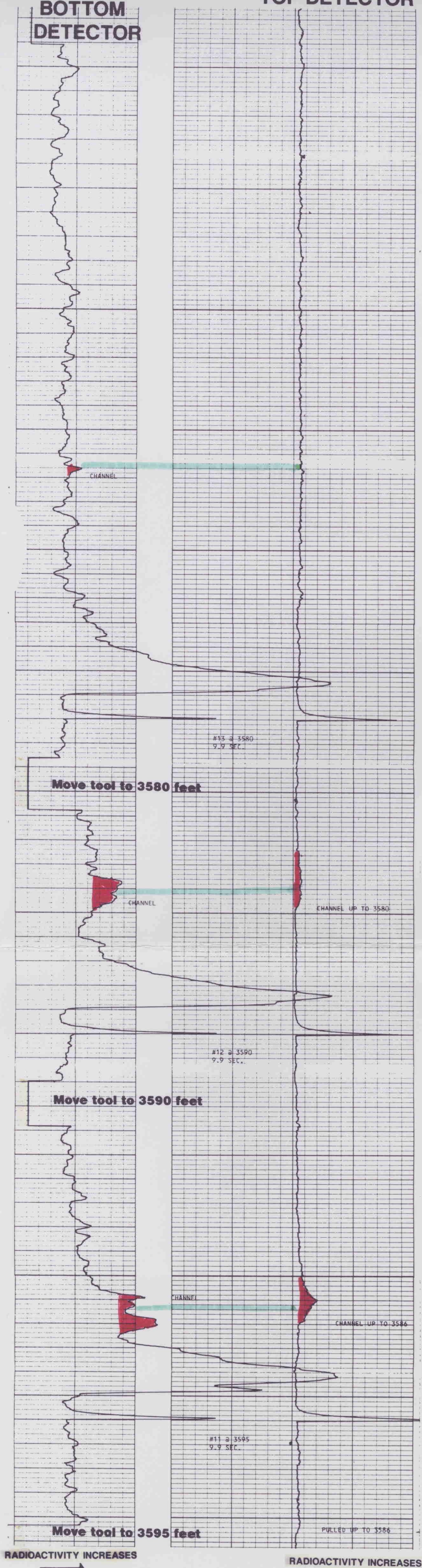
SOUTH EUNICE POOL
LEA COUNTY, NEW MEXICO

MCDONALD STATE ACC'T LEASE, SECTION 16, T-22-S, R-36-E

WELL 30

INJECTIVITY PROFILE (TEMPERATURE) LOG
(HOLMES WIRELINE SERVICE)

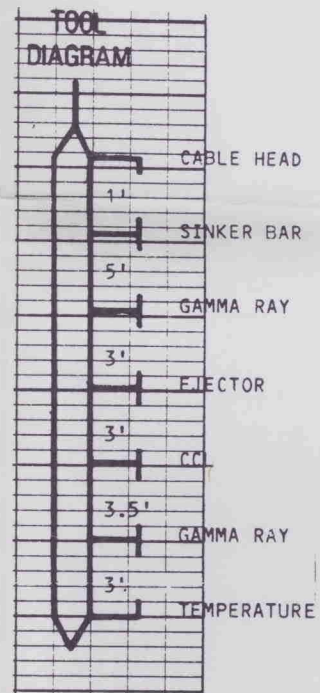
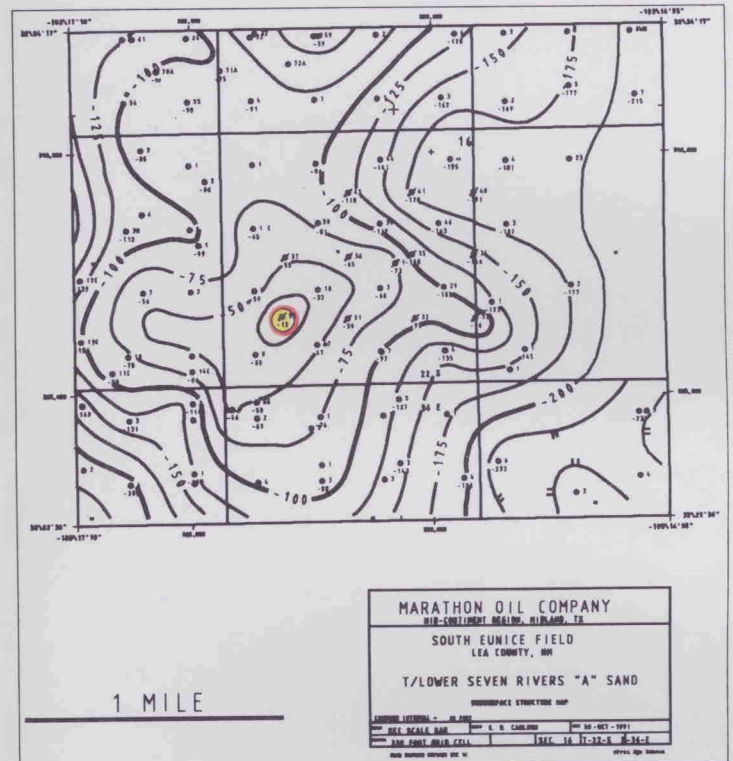
DEC 19, 1991



INCREASING TIME (LATER IN DAY)



Before The
OIL CONSERVATION COMMISSION
Santa Fe, New Mexico
Case No. 10443 Exhibit No. 3
Submitted by: Marathon Oil Company
Hearing Date: 3/05/92



MARATHON OIL COMPANY
MID-CONTINENT REGION

SOUTH EUNICE POOL
LEA COUNTY, NEW MEXICO

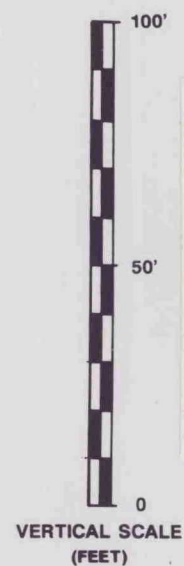
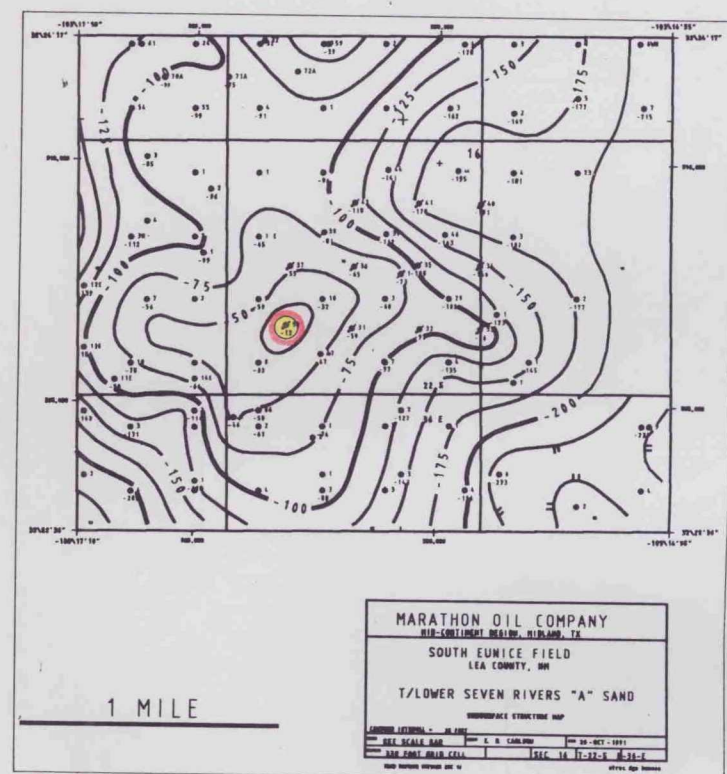
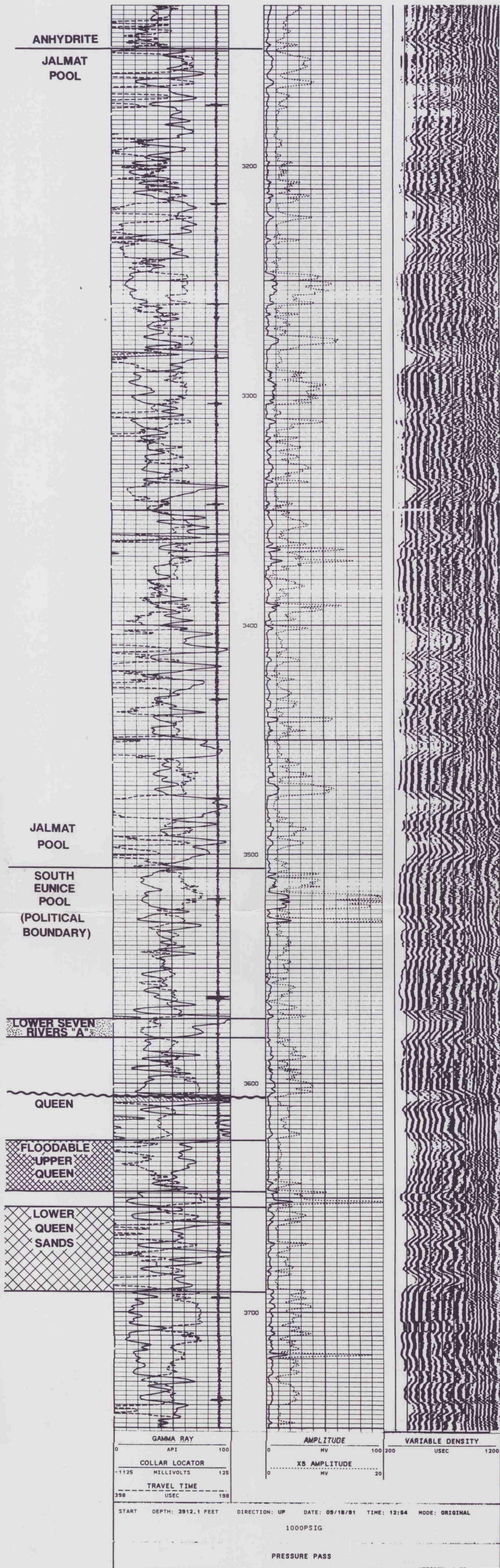
MCDONALD STATE ACC'T 1 LEASE, SEC. 16, T-22-S, R-36-E

WELL 30
CHANNEL CHECK LOG

MEASURING IODINE TRACER RADIOACTIVITY

DEC. 19, 1991

30



Before The
OIL CONSERVATION COMMISSION
Santa Fe, New Mexico
Case No. 10443 Exhibit No. 4
Submitted by: Marathon Oil Company
Hearing Date: 3/05/92

MARATHON OIL COMPANY
MID-CONTINENT REGION

SOUTH EUNICE POOL
LEA COUNTY, NEW MEXICO

MCDONALD STATE ACCT LEASE, SECTION 16, T-22-S, R-36-E

WELL 30

CEMENT BOND LOG
(WEDGE WIRELINE INC.)