

ARMSTRONG ENERGY CORP.

MOBIL LEA STATE #1

LEA COUNTY, NEW MEXICO

N.E. LEA DELAWARE POOL

NET POROSITY ISOPACH MAP

$\phi > 15\%$

2ND SAND INTERVAL

Produces Water throughout field

C.I.: 10'

M. BOLING

JAN. 1994

BEFORE THE
OIL CONSERVATION COMMISSION
Santa Fe, New Mexico

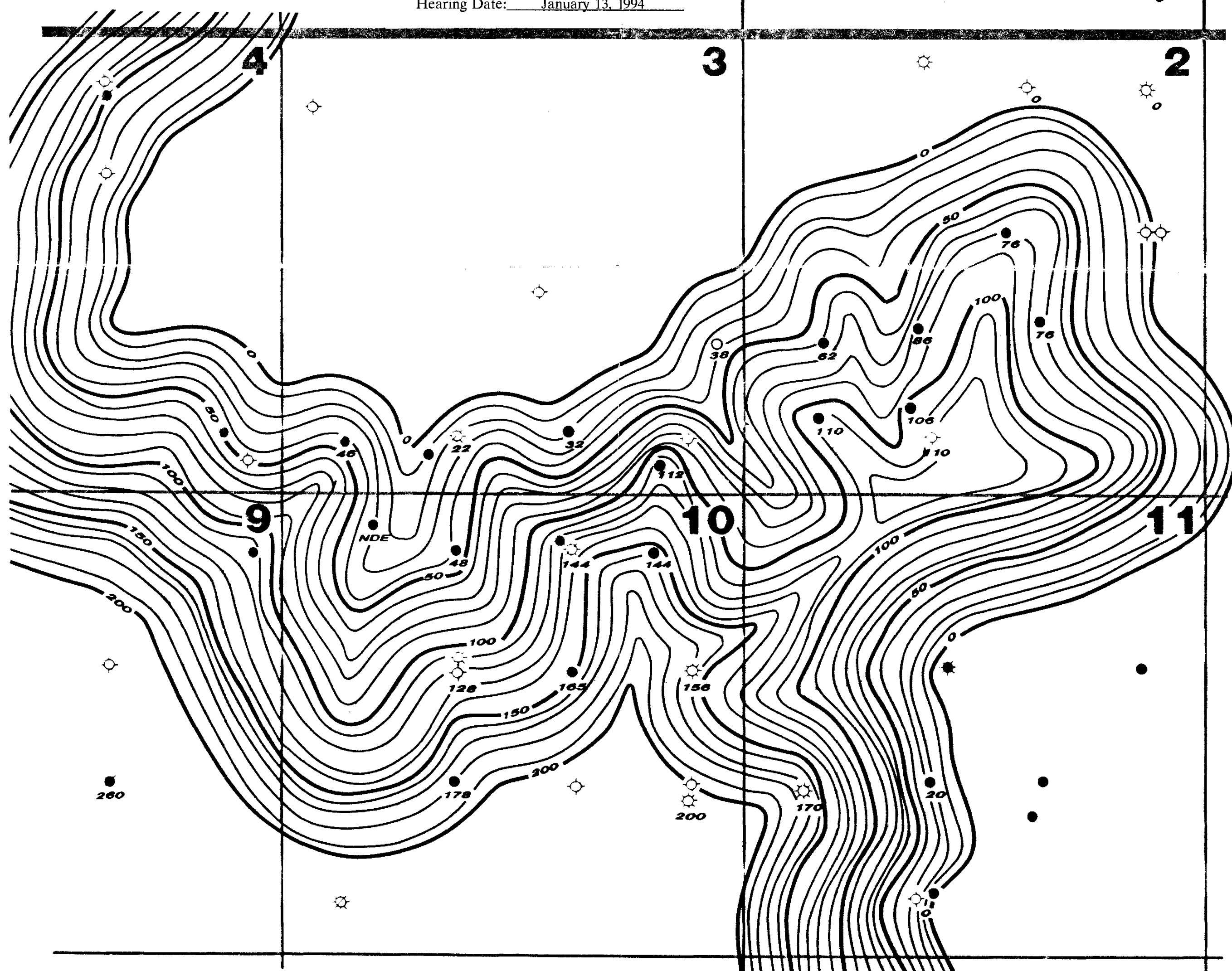
Case Nos. 10653 and 10773 Exhibit No. 3
(Consolidated)

Submitted by: Armstrong Energy Corporation

Hearing Date: January 13, 1994

NDE = NOT DEEP ENOUGH

NP = NOT PRESENT



35

T

19

S

T

20

S

R - 34 - E