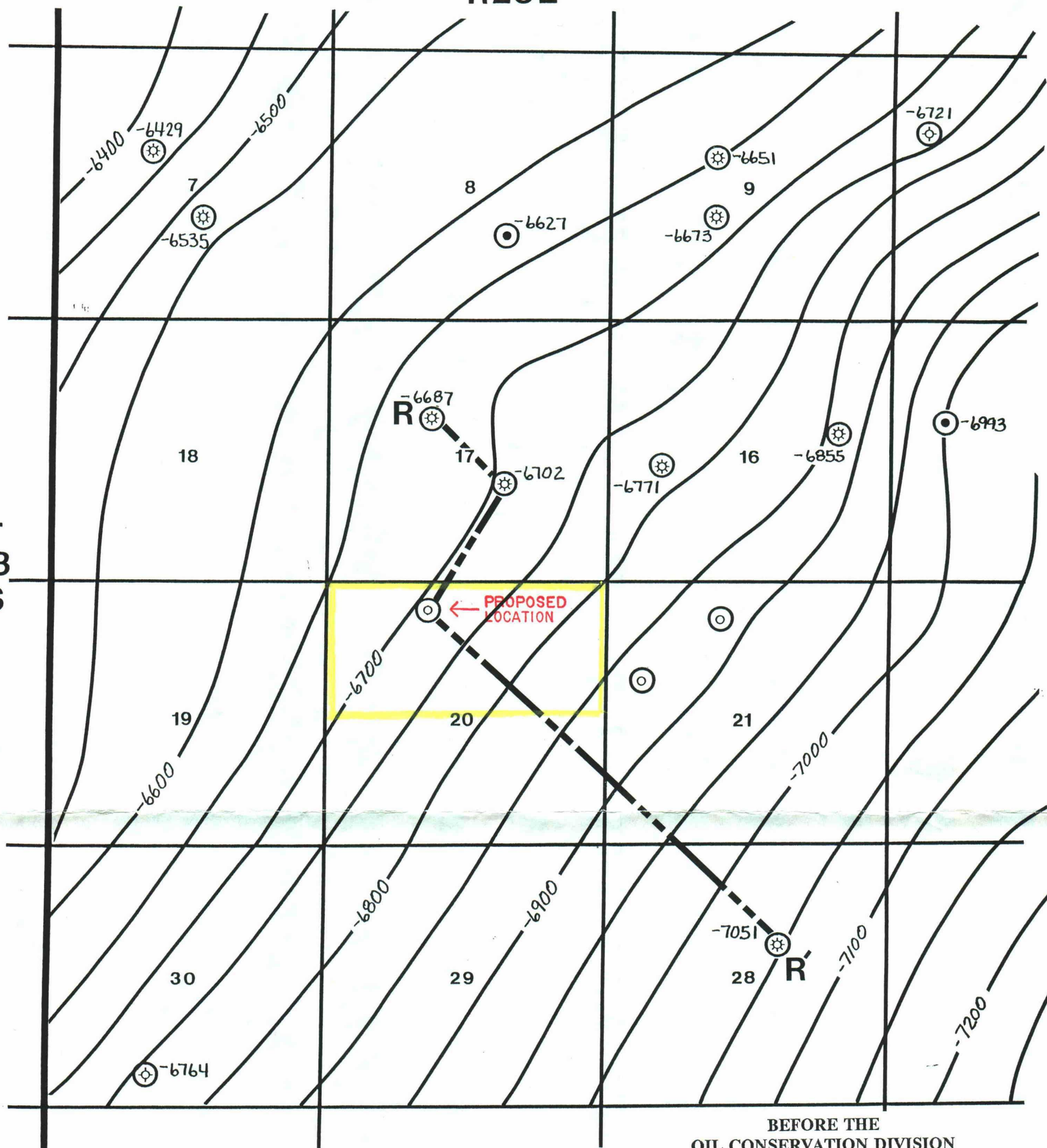


R28E

T
18
S



○ MORROW PENETRATION

BEFORE THE
OIL CONSERVATION DIVISION
Santa Fe, New Mexico

Case No. 10944 Exhibit No. 5

Submitted by: Mewbourne Oil Company

Hearing Date: March 17, 1994

MOC

MEWBOURNE OIL COMPANY
MIDLAND, TEXAS DISTRICT

ILLINOIS CAMP PROSPECT
EDDY COUNTY, NEW MEXICO

TOP/LOWER MORROW STRUCTURE
C.I. = 50'

MARCH, 1994

SCALE 1" = 2000'

D. SHATZER