

**DINERO**

P.O. DRAWER 10505  
MIDLAND, TEXAS 79702

January 23, 1986

*For De Novo  
File*

Oil Conservation Division  
State Land Office Building  
Old Santa Fe Trail  
Santa Fe, New Mexico 87501

Attention: Richard L. Stamets:

RECEIVED  
JAN 24 1986  
OIL CONSERVATION DIVISION

In Re: Big Chief #4, Little  
Squaw #1, Eddy County,  
New Mexico

Dear Mr. Stamets:

Enclosed please find all the information dealing with the above referenced leases for classification as Hardship Gas Wells.

We have submitted same to our attorney, Mr. Bill Karr, who should be in contact with your office.

If there is anything further that is needed, please do not hesitate to contact our office.

Sincerely,

DINERO OPERATING COMPANY

*Dana Ralston*

Dana Ralston  
Production Clerk

/dr  
enc.

cc: District II  
324 W. Main  
Artesia, New Mexico 88210  
Attention: L. A. Clements

# DINERO

P.O. DRAWER 10505  
MIDLAND, TEXAS 79702

JANUARY 20, 1986

RECEIVED

JAN 24 1986

OIL CONSERVATION DIVISION

Oil Conservation Division  
P.O. Box 2088  
Santa Fe, New Mexico 87501

Attention: Richard L. Stamets

Dear Mr. Stamets:

Enclosed please find log off test concerning the following wells:

- A. Big Chief #1
- B. Big Chief #2
- C. Big Chief #4
- D. Little Squaw #1

If there is anything further needed by your office, please feel free to contact us.

Sincerely,

DINERO OPERATING COMPANY



L. C. McClure  
Production Foreman

enc. (4)

LCM/dr

cc: District II  
P.O. Drawer DD  
Artesia, New Mexico 88210  
Attn: L. A. Clements

BIG CHIEF #1

EDDY COUNTY, NEW MEXICO

Production ~~pryor~~ to test--see reports.

July 26, 1985

Open well to pit, rate of flow came down to 53 MCF for 18 hours, then pressure dropped to 0.

July 27, 1985

Attempt to flow, but decided to close in for pressure build-up to unload water.

July 28, 1985

Take well off test, attempt to unload without swabbing.

COMPRESSOR RENTAL	2,304.28
COST TO RUN 15 MCF	48.45
PUMPER	296.68

2258

GAS WELL REPORT

DATE 8 A.M.	CHART DIF.	PRESSURE		CHOKE	HEATER TEMP.	SEPARATOR		STOCK TANK		LIQUID PRODUCTION	DATE SEALS ON	ESTIMATED MCF
		TUBING	CASING			PRESS.	TEMP.	FT.	IN.			
15 443	3.6	100		Full	86			0	10			.108
16 446	3.4	100		Full	90			0	10			.104
17 448	3.6	100		Full	90			0	10			.108
18 450	3.4	100		Full	84			0	10			.108
19 452	3.4	100		Full	88			0	10			.102
20 454	3.4	100		Full	84			0	10			.099
21 455	3.4	100		Full	84			0	10			.101
CE SIZE 1 1/2 4548 REMARKS												

SIGNATURE Charlie Williams  
 PRINTED IN U.S.A.  
 KROGER 143-1 BOX 800  
 TULSA OK 74101

## GAS WELL REPORT

LEASE			WELL NO.			DATES-FROM		TO					
Big Chief			1			July 21, 1985		July 28, 1985					
DATE 8 A.M.	CHART		PRESSURE		CHOKE	HEATER TEMP.	SEPARATOR		STOCK TANK		LIQUID PRODUCTION	DATE SEALS ON	ESTIMATED MCF
	ST	DIF.	TUBING	CASING			PRESS.	TEMP.	FT.	IN.			
22	545	0	600		full	94			0	10			0
23	575	2.8	100		full	90			0	10			096
24	-	-	400		full	-			0	10			0
25	-	-	400		full	-			0	10			0
26	-	-	80	14/64	full	-			0	10			0
27	-	-	320	14/64	full	-			0	10			0
28	-	-	1100	14/64	full	-			0	10			0

1/2" 4548

REMARKS

7-22 Started compressor. 7-23 Shut well in  
7-25 Kolor Kut: for test. 7-24 Flaring well.

0-3 oil 7-25 Shut well in for test.

0-7 water 7-26 thru 7-28 well  
shut in.

SIGNATURE

Charlie Williams

143-1 BOX 800 TULSA OK 74101

PRINTED IN U.S.A.

## GAS WELL REPORT

LEASE					WELL NO.		DATES-FROM		TO				
Big Chief					1		July 14, 1985		July 21, 1985				
DATE 8 A.M.	CHART		PRESSURE		CHOKE	HEATER TEMP.	SEPARATOR		STOCK TANK		LIQUID PRODUCTION	DATE SEALS ON	ESTIMATED MCF
	ST	DIF.	TUBING	CASING			PRESS.	TEMP.	FT.	IN.			
15	348	3.4	100		full	90			0	10			.090
16	348	3.4	100		full	94			0	10			.090
17	348	3.4	100		full	90			0	10			.090
18	467	3.6	100		full	100			0	10			.110
19	467	3.6	100		full	98			0	10			.110
20	542	3.8	100		full	90			0	10			.124
21	542	0	500		full	90			0	10			0

1/2" 4548

REMARKS

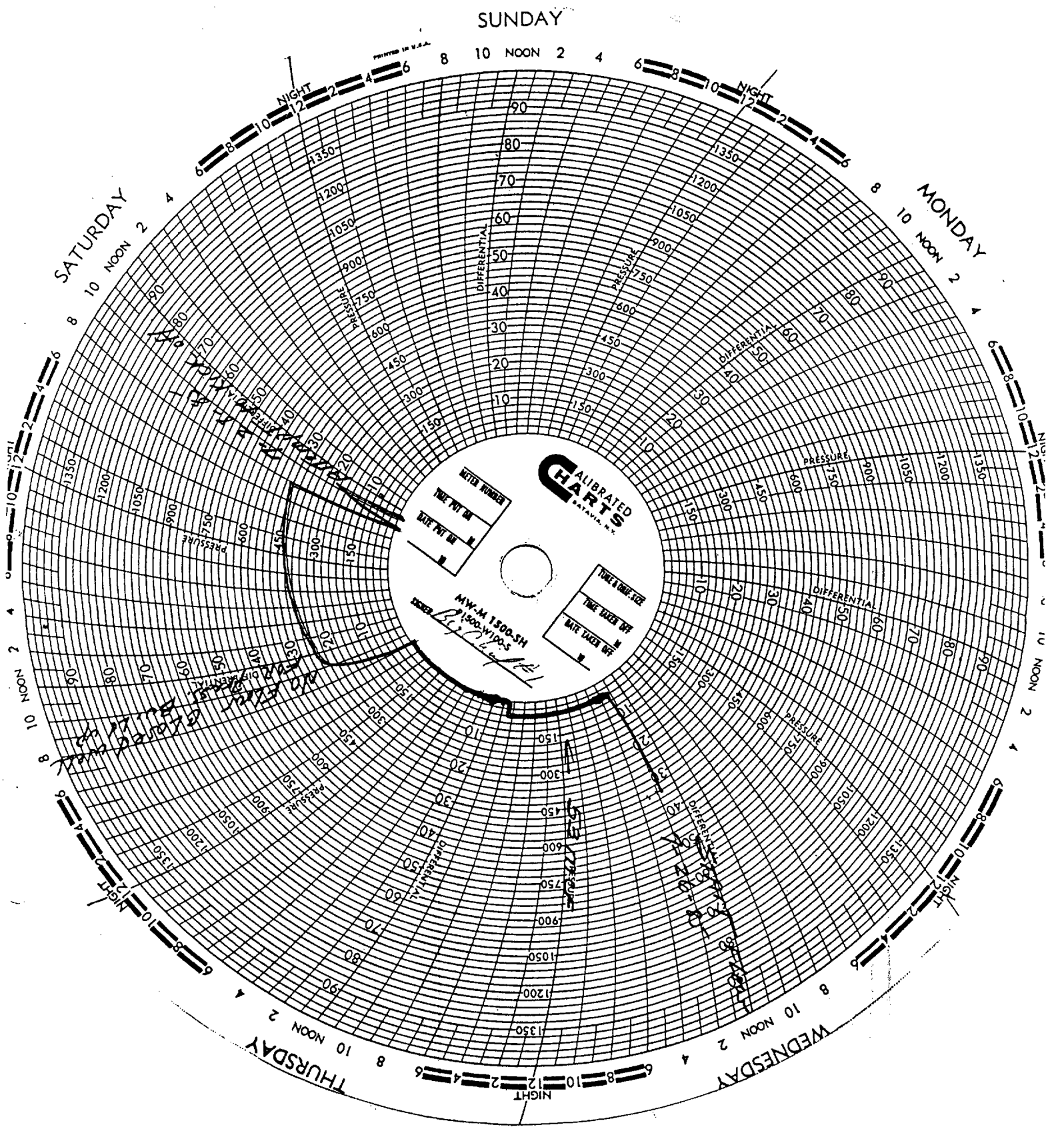
7-21 Compressor was down.

SIGNATURE

Charlie Williams

143-1 BOX 800 TULSA OK 74101

PRINTED IN U.S.A.



BIG CHIEF #2

EDDY COUNTY, NEW MEXICO

July 8, 1985

Production from Gauge Report--241 MCF.

July 9, 1985

Production from Gauge Report--277 MCF.

July 19, 1985

Closed in.

July 11, 1985

Blew well to atmosphere.

July 12, 1985

Production--688 MCF.

July 25, 1985

Start log<sup>g</sup> off test.

July 26, 1985

Flow on 14/64 choke, to sales line.

July 27, 1985

Flow to atmosphere-- 14/64 choke. Estimated production--222 MCF.

# GAS WELL REPORT

LEASE

WELL NO.

DATE-FROM

TO

DATE  
8 A.M.

CHAR

PRESSURE

CHOKE

HEATER  
TEMP.

SEPARATOR  
PRESS.

TEMP.

STOCK TANK  
FT.

IN.

LIQUID  
PRODUCTION

DATE  
SEALS ON

ESTIMATED  
MCF

Big Chief  
2  
July 21, 1985  
July 28, 1985

22	575	4.3	580	18	64	90						490
23	573	3.8	550	18	64	84						422
24	569	6.4	360	18	64	84						574
25	-	-	240	18	64	-						0
26	-	-	240	18	64	-						0
27	-	-	240	18	64	-						0
28	598	0	1000	18	64	85						0

REMARKS

15.1978

7-25 + 7-26 Heating

7-25 Kolar Kuti

7-27 Shut well in for testing

3-0 oil

7-28 Put well on line

5-2 water

Charles Williams

NO. 143-1 BOX 800 TULSA OK 74101

PRINTED IN U.S.A.



## AS WELL REPORT

WELL RETURN				WELL NO.		DATES-FROM		TO					
CASE				2		July 7		1985 July 14					
DATE 8 A.M.	CHART		PRESSURE		CHOKE	HEATER TEMP.	SEPARATOR		STOCK TANK		LIQUID PRODUCTION	DATE SEALS ON	ESTIMATED MCF
	DIF.	TUBING	CASING	PRESS.			TEMP.	FT.	IN.				
8	530	2.2	550		18 64	86			8	2			.241
9	432	2.8	500		18 64	85			8	2			.277
10	—	—	—		—	—			8	2			0
11	348	—	1200		18 64	—			8	2			0
12	338	7.8	400		18 64	86			8	2			.688
13	337	7.8	400		18 64	90			8	2			.676
14	337	7.3	350		18 64	84			8	2			.632
									</				

Coef. 15.1972  
 7-9 Blew well for test.  
 7-10 Shut in well.  
 7-11 Put well on line.

SIGNATURE

Charlie Williams

Form 143-1 BOX 800  
TULSA OK 74101

PRINTED IN U.S.A.

## AS WELL REPORT

WELL NO.				DATES-FROM		TO															
Big Chief				2		July 14, 1985															
DATE 8 A.M.				CHART		PRESSURE		CHOKE		HEATER TEMP.		SEPARATOR		STOCK TANK		LIQUID PRODUCTION		DATE SEALS ON		ESTIMATED MCF	
				DIF.		TUBING		CASING				PRESS.		TEMP.		FT.		IN.			
15				348		6.8		350				86				8		2			
16				348		7.0		350				84				8		2			
17				348		7.0		350				85				8		2			
18				421		0		280				90				8		2			
19				421		0		160				94				8		2			
20				538		0		100				88				8		2			
21				538		5.0		500				90				8		2			

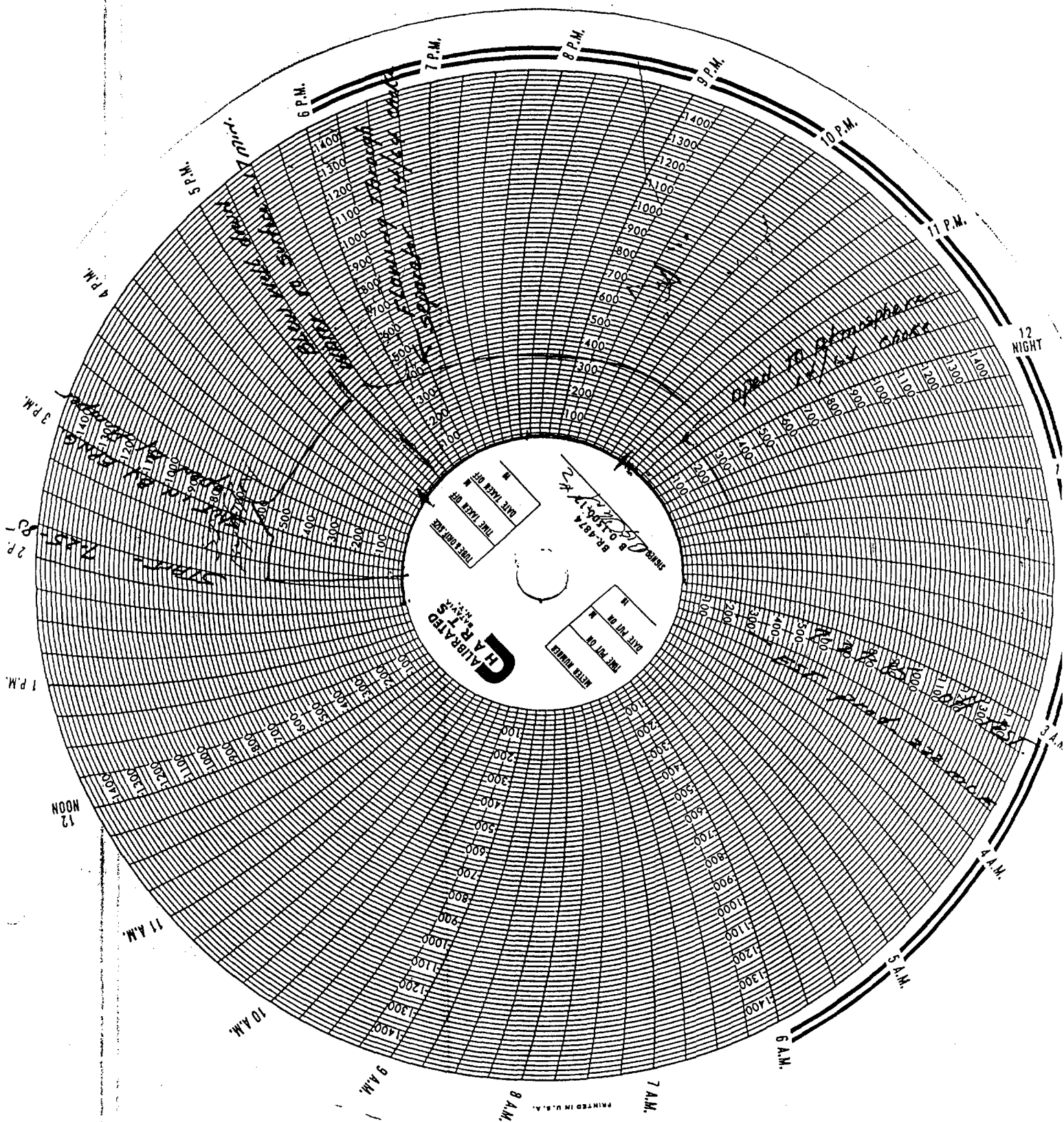
Coef. 15.1972

SIGNATURE

Charlie Williams

Form 143-1 BOX 800  
TULSA OK 74101

PRINTED IN U.S.A.



2275

BIG CHIEF #4

EDDY COUNTY, NEW MEXICO

July 24, 1985

Shut compressor down and open well to atmosphere- 14/64 choke. Estimated on production--60 MCF.

July 25, 1985

Flow to atmosphere- 14/64 choke. Estimated production--60 MCF.

July 26, 1985

Flow to atmosphere- 14/64 choke. Estimated production--32 MCF.

COMPRESSOR RENTAL	1,567.00
COST TO RUN 12.5 MCF	40.38
PUMPER	296.68

## GAS WELL REPORT

WELL NO.				DATES-FROM		TO							
Big Chief				4		July 21, 1985		July 28, 1985					
DATE 8 A.M.	CHART		PRESSURE		CHOKE	HEATER TEMP.	SEPARATOR		STOCK TANK		LIQUID PRODUCTION	DATE SEALS ON	ESTIMATED MCF
	ST	DIF.	TUBING	CASING			PRESS.	TEMP.	FT	IN.			
22	6.5	2.6	100		Full	90			5	6			.089
23	5.45	0	300		Full	94			5	6			0
24	—	—	100		Full	—			5	6			0
25	—	—	80	14/64	Full	—			5	6			0
26	—	—	40	14/64	Full	—			5	6			0
27	—	—	40	14/64	Full	—			5	6			0
28	5.08	3.2	100		Full	90			5	6			.102

1/2" 4548 REMARKS 7-23 Shut well in for test; flaring well.  
 7-25 Koloruti: 7-24 flaring well.  
 0-2 oil 7-25 to 7-27 testing well.  
 5-4 water 7-27 Put well on line; started compressor.

SIGNATURE Charlie Williams

143-1 BOX 400 TULSA OK 74101

PRINTED IN U.S.A.

## GAS WELL REPORT

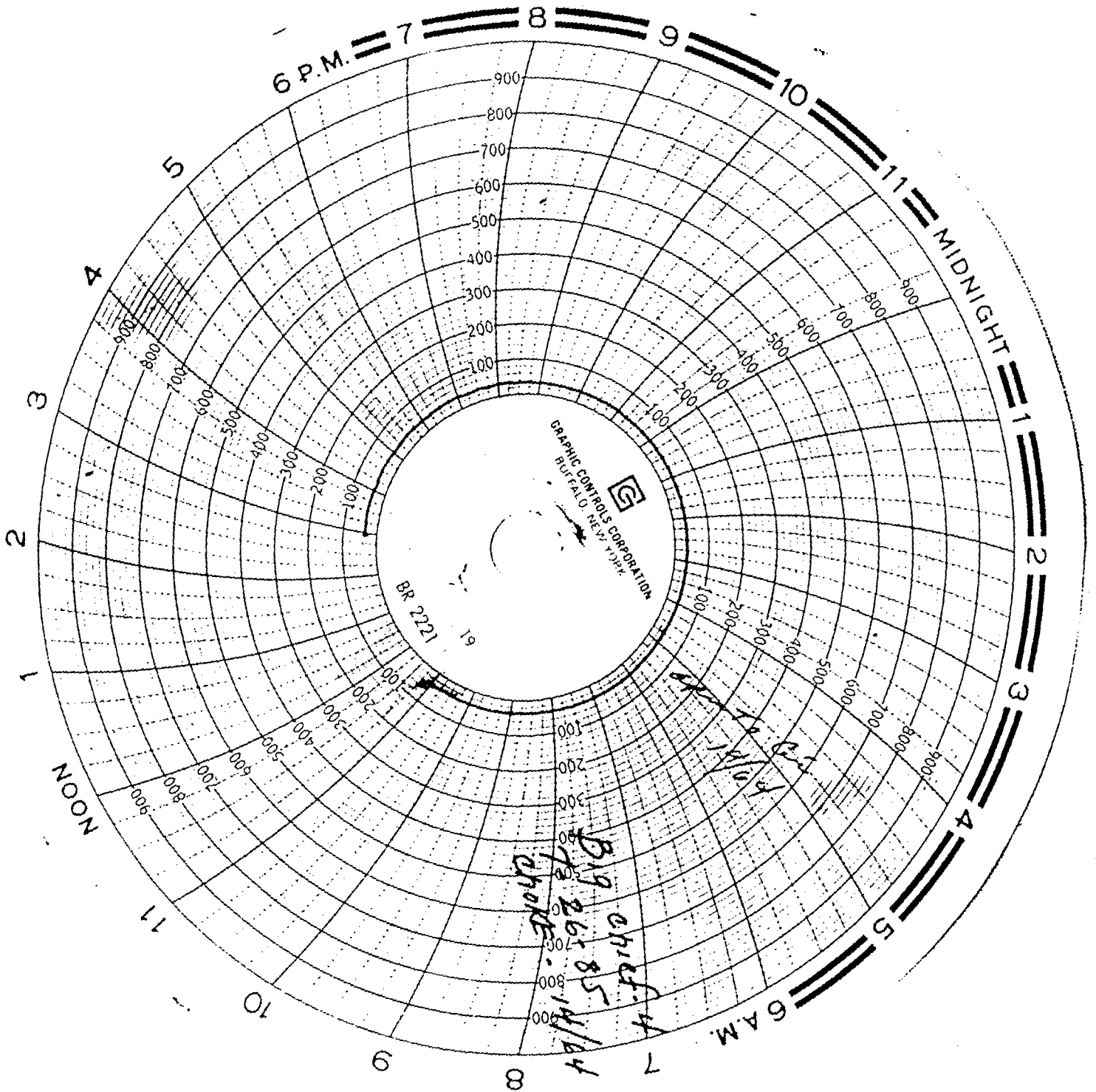
WELL NO.				DATES-FROM		TO							
Big Chief				4		July 14, 1985		July 21, 1985					
DATE 8 A.M.	CHART		PRESSURE		CHOKE	HEATER TEMP.	SEPARATOR		STOCK TANK		LIQUID PRODUCTION	DATE SEALS ON	ESTIMATED MCF
	ST	DIF.	TUBING	CASING			PRESS.	TEMP.	FT.	IN.			
15	348	5.8	3.0	100	full	90			5	6			.079
16	348	5.8	3.0	100	full	96			5	6			.079
17	348	5.8	3.0	100	full	96			5	6			.079
18	421	6.7	3.0	100	full	98			5	6			.091
19	461	6.7	2.8	100	full	96			5	6			.085
20	530	7.2	3.0	100	full	90			5	6			.098
21	598	7.0	2.8	100	full	90			5	6			.089
										</			

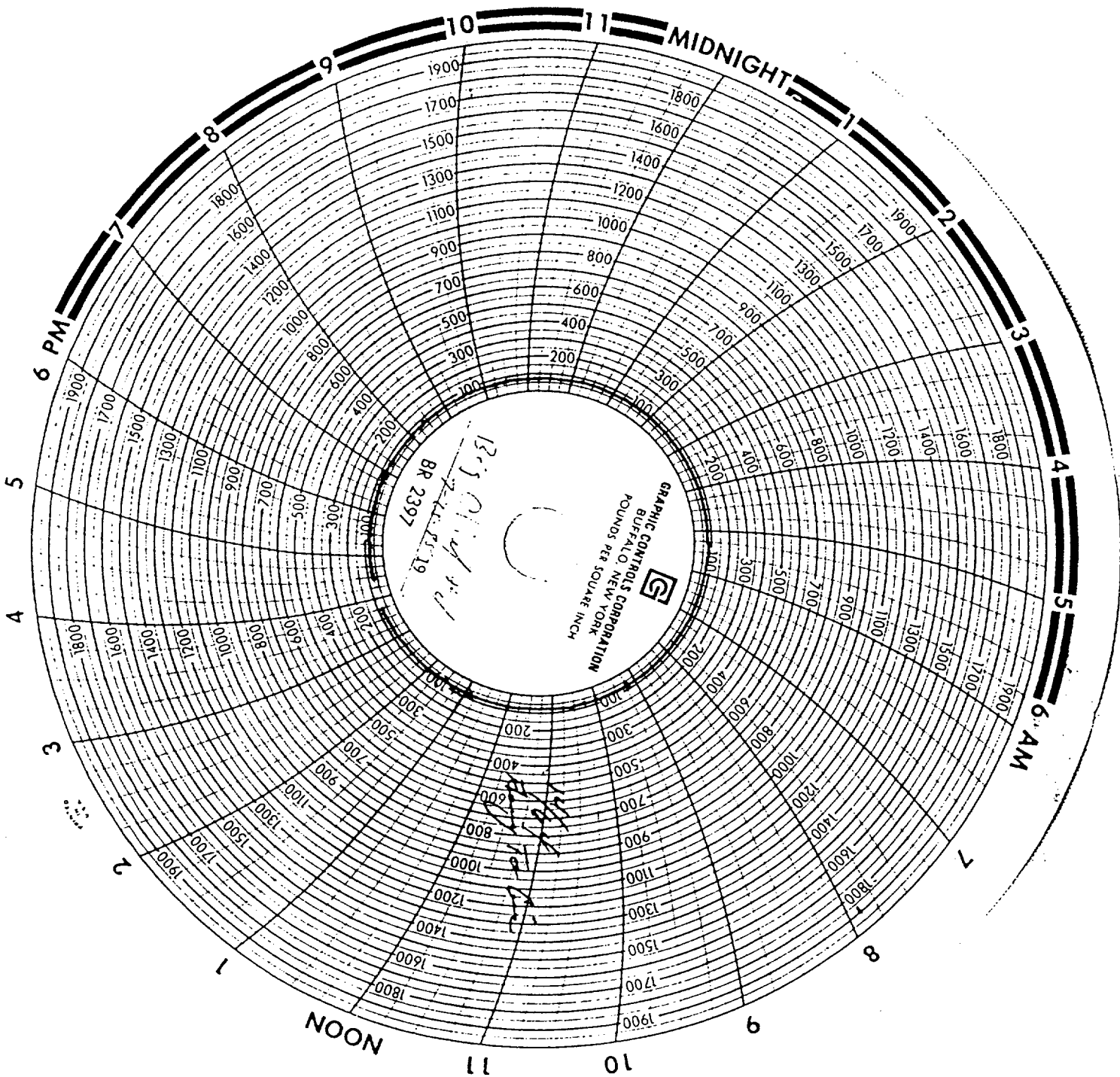
1/2" 4548 REMARKS

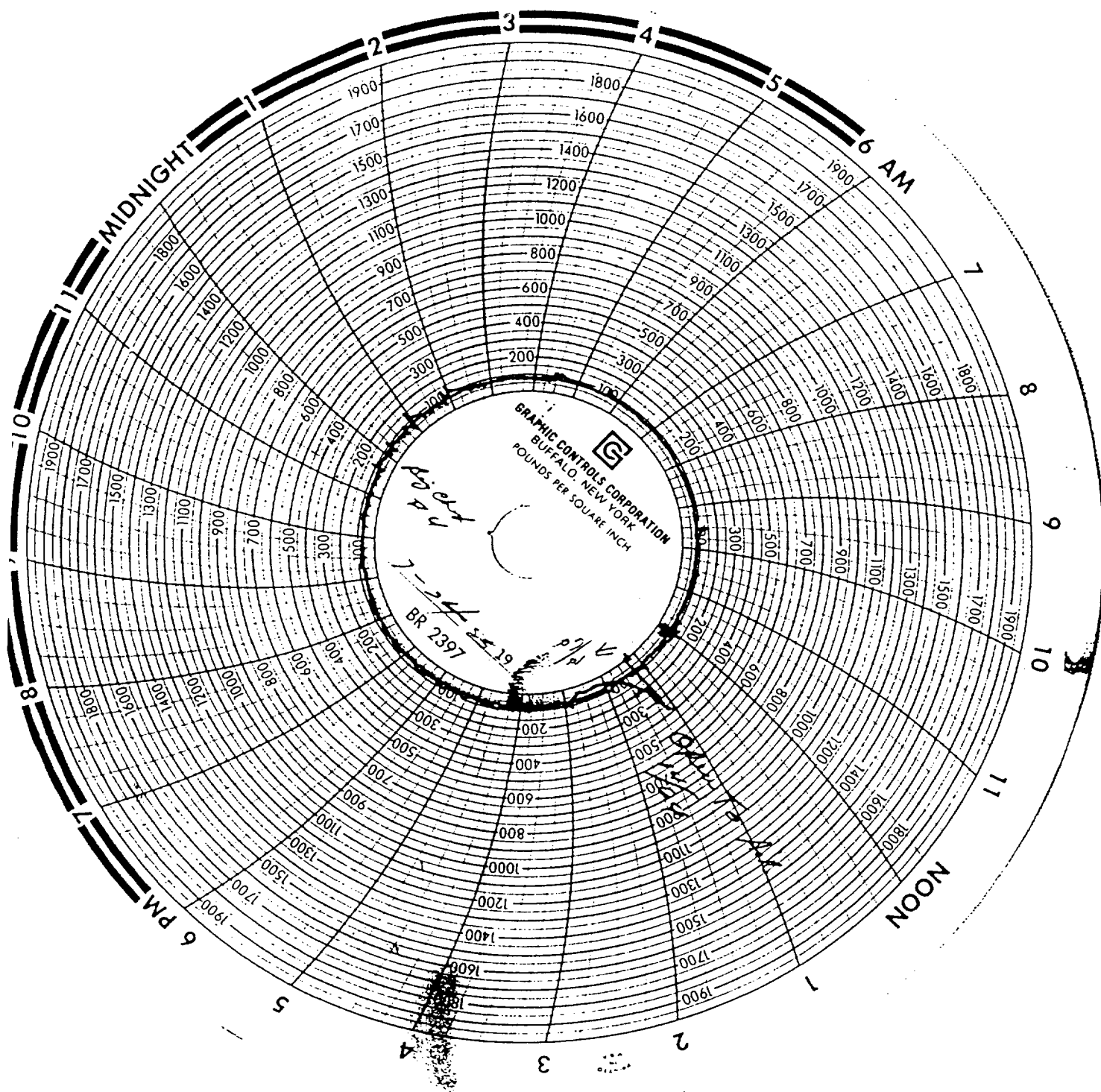
SIGNATURE Charlie Williams

143-1 BOX 400 TULSA OK 74101

PRINTED IN U.S.A.







LITTLE SQUAW #1

July 11, 1985

12/64 put on line, came down to line pressure.

July 12, 1985

Two (2) hours on line pressure, changed chart.

July 13, 1985

Going through separator, line pressure from 2 p.m. to 3 p.m., may have produced some gas.

July 14, 1985

Still through separator, riding line pressure.

July 23, 1985

Open to air 12/64 choke.

July 25, 1985

Flow to burn pit, 12/64 choke, estimated production 400 MCF.

July 26, 1985

12/64 choke, estimated production 336 MCF.



## GAS WELL REPORT

WELL NO.		DAYS-FROM		TO									
Little Squaw		July 7		July 14									
DATE O A M	CHART		PRESSURE		CHOKE	HEATER TEMP.	SEPARATOR		STOCK TANK		LIQUID PRODUCTION	DATE SEALS ON	ESTIMATED MCF
	ST	DIF.	TUBING	CASING			PRESS.	TEMP.	FT.	IN.			
8	5:30	4.0	550		Full	80			2	3			.138
9	5:45	4.8	550		Full	78			2	3			.150
10	—	—	—		—	—			2	3			0
11	3:48	—	1050		Full	—			2	3			0
12	3:48	8.2	400		Full	84			2	3			.228
13	3:37	8.0	400		Full	90			2	3			.219
14	3:37	7.8	350		Full	90			2	3			.213

CE SIZE

Coef. 4.8

REMARKS

7-9 Blew well for test.

7-10 Shut in well.

7-11 Put well on line

SIGNATURE

Charlie Williams

Hess 143-1 BOX 800 TULSA OK 74101

PRINTED IN U.S.A.

## GAS WELL REPORT

WELL NO.				DAYS-FROM		TO							
Little Squaw				July 21, 1985		July 28, 1985							
DATE O A M	CHART		PRESSURE		CHOKE	HEATER TEMP.	SEPARATOR		STOCK TANK		LIQUID PRODUCTION	DATE SEALS ON	ESTIMATED MCF
	ST	DIF.	TUBING	CASING			PRESS.	TEMP.	FT.	IN.			
22	5:45	3.4	580		Full	84			2	9			.122
23	5:45	3.4	600		Full	78			3	0			.119
24	3:40	6.8	400		Full	84			3	3			.196
25	3:40	0	500		Full	85			3	6			0
26	—	—	420		Full	—			3	6			0
27	—	—	420		Full	—			3	6			0
28	5:40	0	1000		Full	85			3	6			0

CE SIZE

Coef. 4.8

REMARKS

7-25 Flaring well.

7-25 Kolor Kut.

7-26 &amp; 27 Testing.

0-5 oil

7-28 Put well on line.

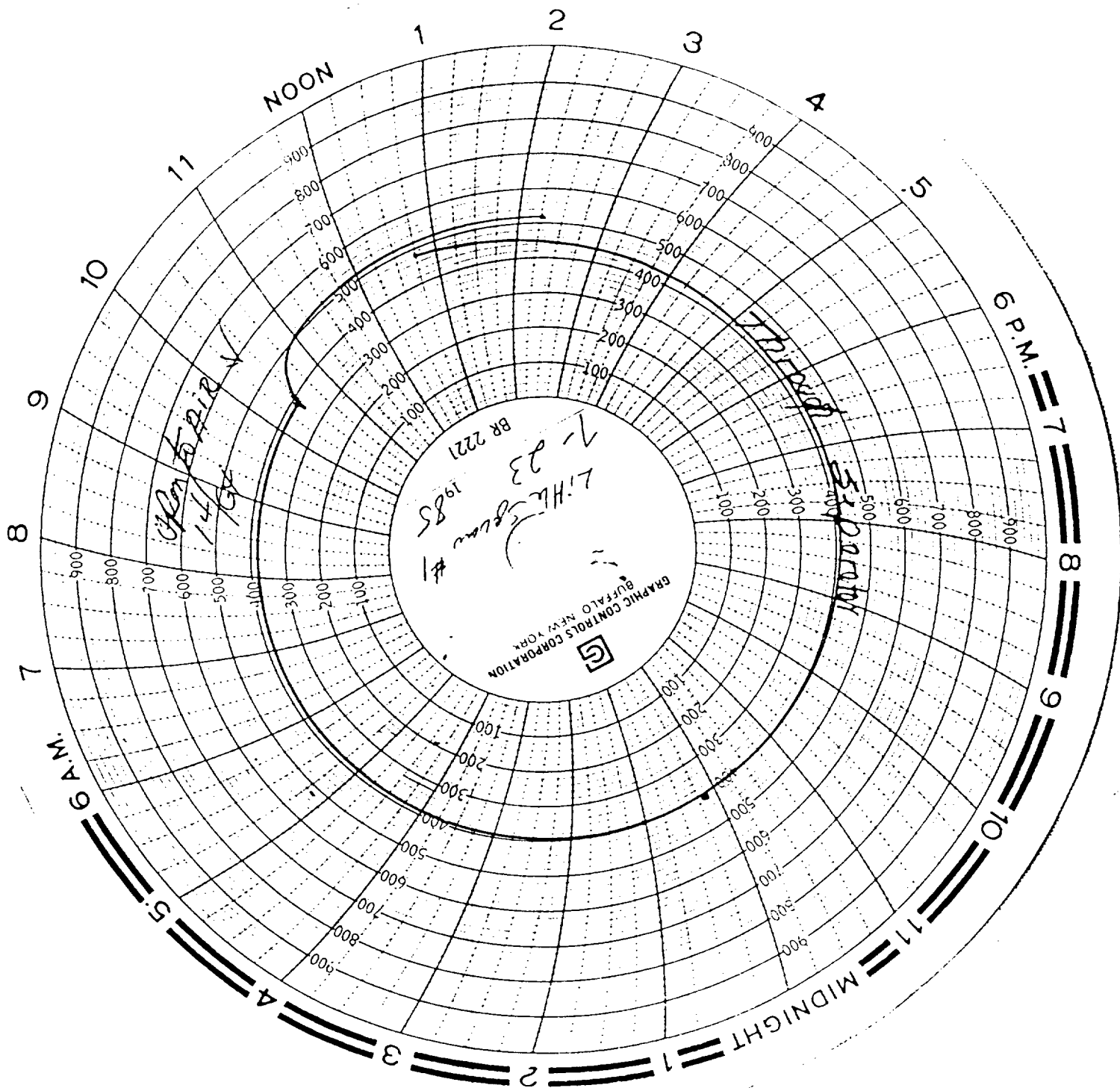
3-1 water

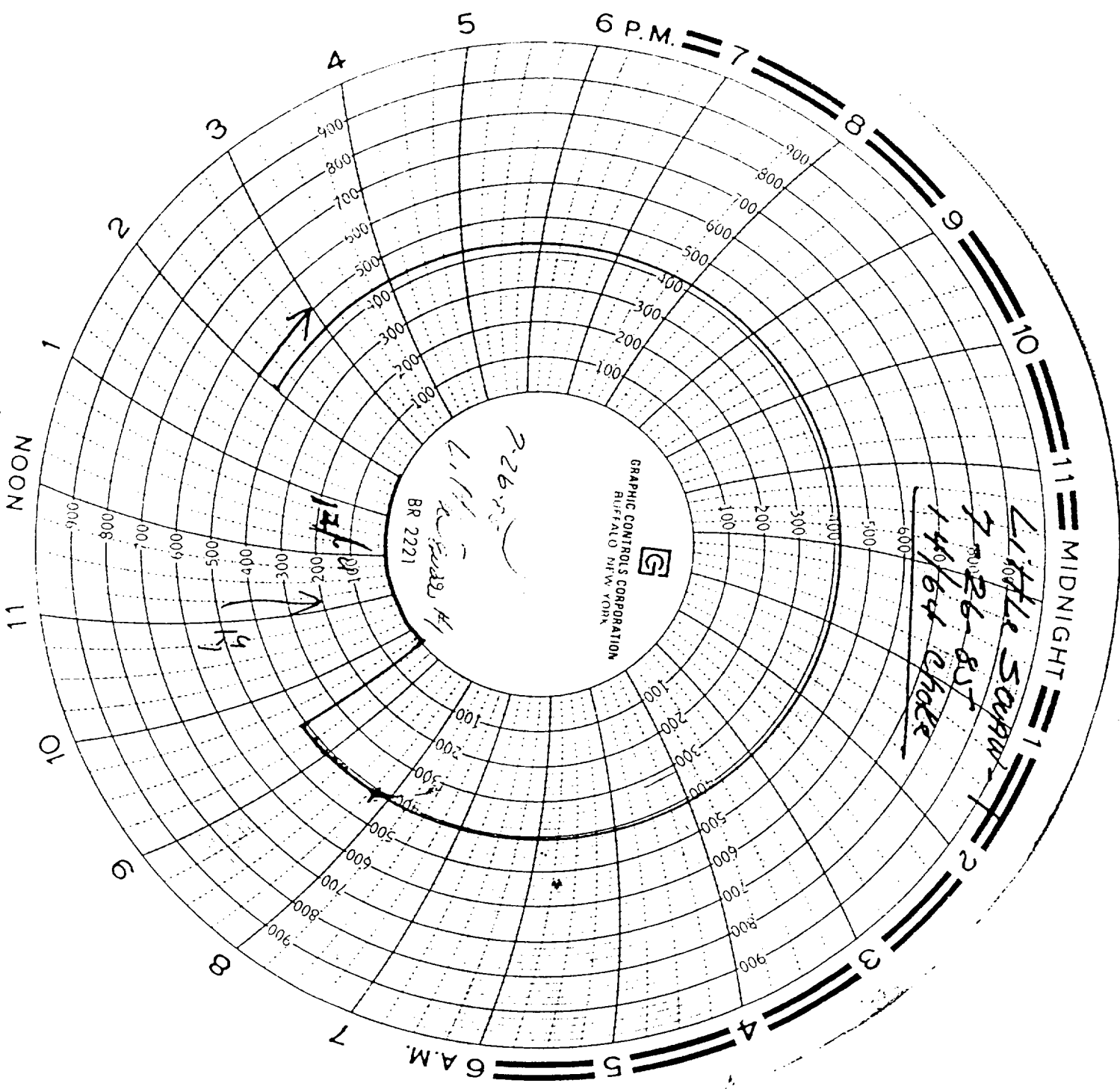
SIGNATURE

Charlie Williams

Hess 143-1 BOX 800 TULSA OK 74101

PRINTED IN U.S.A.





Little Swan  
7-26-85  
BR 2221

140/64 Choke

