

UNIT I-A

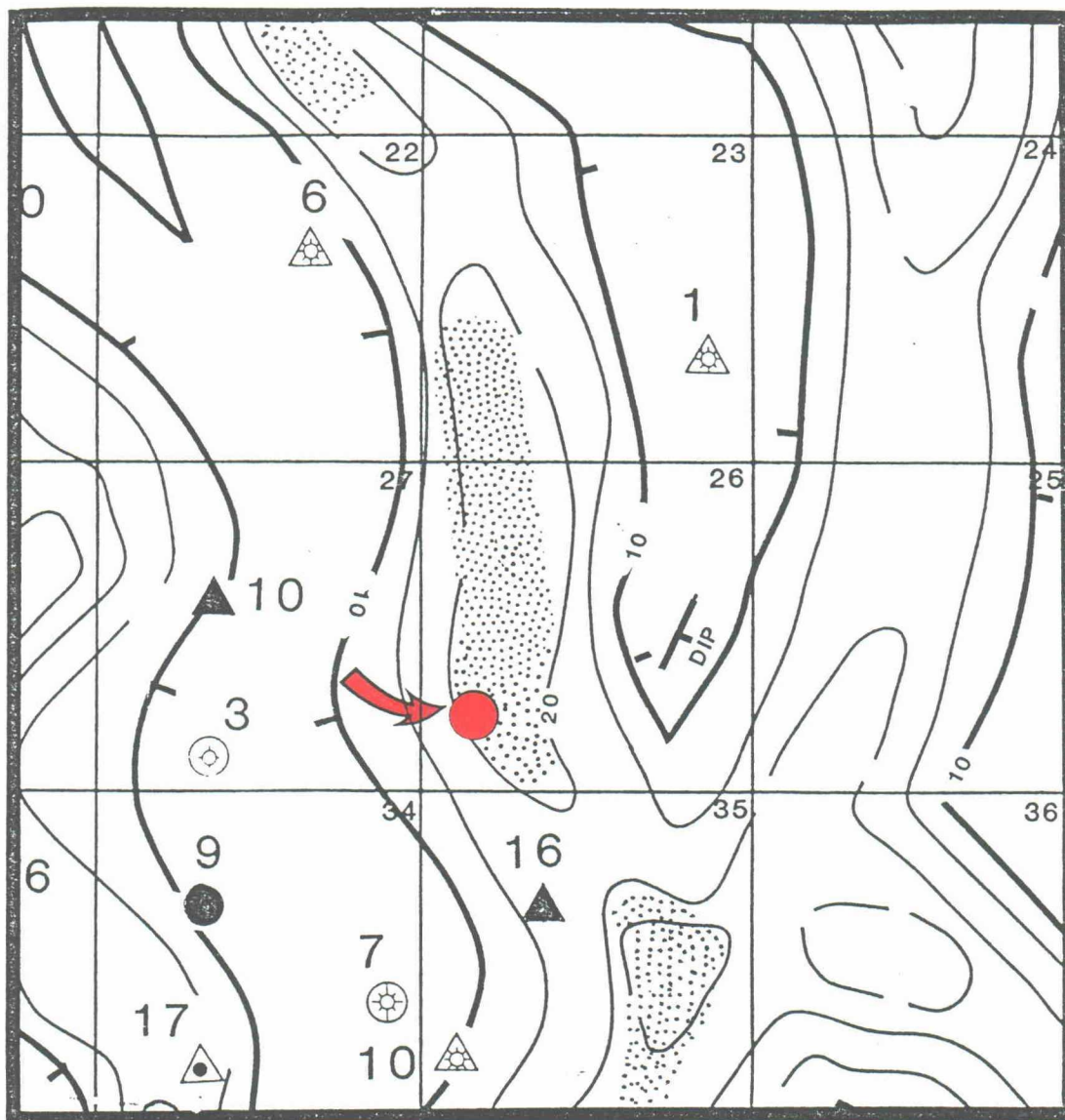


FIGURE 1. Net sandstone isopach map
of the major Morrow pay unit
C.I.: 5 ft.

- Pays this unit
- ⋯ Net porosity ≥ 10 ft.
- △ NPC-operated well

0 4000 Ft.

BEFORE EXAMINER CATANACH
OIL CONSERVATION DIVISION

NEARBURG EXHIBIT NO: 4

CASE NO: 9405