

SCHEDULE XIV  
 FOURTEENTH EXPANDED PARTICIPATING AREA FOR THE MESAVERTDE FORMATION  
 ALLISON UNIT AREA

SERIAL NUMBER	DESCRIPTION	NUMBER OF ACRES	DRILLING BLOCK		PERCENTAGE COMMITTED	PRESENT ACTUA PARTICIPATION	
			OWNERSHIP	PERCENTAGE			
SF 078459-B	<u>T-32-N, R-7-W</u>	1,874.32	<u>TRACT 1</u>				
	Sec. 9: Lots 1,2,3, E/2 SW/4, SE/4		Royalty;	12.50%	12.50%	17.233019%	
	Sec. 10: Lots 1,2,3,4, S/2		Working Interest;				
	Sec. 11: Lots 2,3,4, N/2 SW/4		El Paso Natural Gas Co.;	41.00%	41.00%		
	Sec. 14: SW/4 NW/4, SW/4 NE/4, S/2		Amerada Petroleum Corp.;	41.00%	41.00%		
	Sec. 15: A11		ORRI;	5.50%	5.50%		
			TOTAL	<u>100.00%</u>	<u>100.00%</u>		
	SF 078483-A	<u>T-32-N, R-7-W</u>	759.31	<u>TRACT 2</u>			
		Sec. 11: Lot 1, E/2 SE/4		Royalty;	12.50%	12.50%	6.981307%
		Sec. 12: Lot 4, W/2 SW/4		Working Interest;			
Sec. 13: W/2 NW/4			El Paso Natural Gas Co.;	41.00%	41.00%		
Sec. 14: E/2 NE/4			Amerada Petroleum Corp.;	41.00%	41.00%		
Sec. 23: E/2			ORRI;	5.50%	5.50%		
		Sec. 26: W/2 NE/4		TOTAL	<u>100.00%</u>	<u>100.00%</u>	
SF 080067-A		<u>T-32-N, R-7-W</u>	160.00	<u>TRACT 3</u>			
		Sec. 24: NW/4		Royalty;	12.50%	12.50%	1.471085%
			Working Interest;				
		El Paso Natural Gas Co.;	41.50%	41.50%			
		Amerada Petroleum Corp.;	41.50%	41.50%			
		ORRI;	4.50%	4.50%			
		TOTAL	<u>100.00%</u>	<u>100.00%</u>			

SCHEDULE XIV

SERIAL NUMBER	DESCRIPTION	NUMBER OF ACRES	DRILLING BLOCK		PERCENTAGE COMMITTED	PRESENT ACTUAL PARTICIPATION		
			OWNERSHIP	PERCENTAGE				
SF 081155	T-32-N, R-6-W	912.99						
	Sec. 19: Lots 2,3,4, NE/4 SW/4, E/2 SE/4, SW/4 SE/4		Royalty; Working Interest: El Paso Natural Gas Co.; Amerada Petroleum Corp.; ORRI;	12.50%  41.50% 41.50% 4.50%	12.50%  41.50% 41.50% 4.50%	8.394284%		
	Sec. 29: NW/4, N/2 SW/4, SE/4 SW/4							
	Sec. 30: Lots 2,3,4, SE/4 NW/4, E/2 SW/4, S/2 NE/4, NE/4 NE/4							
			TOTAL	100.00%	100.00%			
	TRACT 4							
	NM 01745	T-32-N, R-7-W	80.00					
		Sec. 25: S/2 NE/4		Royalty; Working Interest: El Paso Natural Gas Co.; Phillips Drilling Co.; ORRI;	12.50%  43.75% 43.75% 0.00%		12.50%  43.75% 43.75% 0.00%	.735542%
				TOTAL	100.00%		100.00%	
		TRACT 5						
NM 04206		T-32-N, R-7-W	160.00					
		Sec. 23: NW/4		Royalty; Working Interest: El Paso Natural Gas Co.; Amerada Petroleum Corp.; ORRI;	12.50%  41.00% 41.00% 5.50%	12.50%  41.00% 41.00% 5.50%	1.471084%	
				TOTAL	100.00%	100.00%		
		TRACT 6						

SCHEDULE XIV

SERIAL NUMBER	DESCRIPTION	NUMBER OF ACRES	DRILLING BLOCK		PERCENTAGE COMMITTED	PRESENT ACTUAL PARTICIPATION		
			OWNERSHIP	PERCENTAGE				
NM 04207	T-32-N, R-6-W	799.05						
	Sec. 7: Lot 6, NE/4 SW/4, N/2 SE/4 (N/2 S/2)		Royalty; Working Interest: El Paso Natural Gas Co.; Amerada Petroleum Corp.;	12.50% 41.00% 41.00% 5.50%	12.50% 41.00% 41.00% 5.50%	7.346688%		
	Sec. 17: E/2, E/2 W/2, SW/4 SW/4		ORRI;	5.50%	5.50%			
	Sec. 18: S/2 SE/4							
	Sec. 30: NW/4 SE/4							
		TOTAL	100.00%	100.00%				
			TRACT 7					
I-22-Ind. 2792	(Colorado) T-32-N, R-6-W	32.29						
	Sec. 19: Lot 6 (NE/4 SE/4)		Royalty; Working Interest: El Paso Natural Gas Co.; Amerada Petroleum Corp.;	12.50% 43.75% 43.75% 0.00%	12.50% 43.75% 43.75% 0.00%	.296883%		
			ORRI;	0.00%	0.00%			
			TOTAL	100.00%	100.00%			
				TRACT 8				
E-503	T-32-N, R-7-W	320.00						
	Sec. 16: E/2		Royalty; Working Interest: El Paso Natural Gas Co.; ORRI;	12.5000% 75.5625% 11.9375%	12.5000% 75.5625% 11.9375%	2.942169%		
			TOTAL	100.0000%	100.0000%			
				TRACT 9				

SCHEDULE XIV

SERIAL NUMBER	DESCRIPTION	NUMBER OF ACRES	DRILLING BLOCK		PERCENTAGE COMMITTED	PRESENT ACTUAL PARTICIPATION
			OWNERSHIP	PERCENTAGE		
E-504	T-32-N, R-6-W Sec. 16: W/2	320.00	TRACT 10			2.942169%
			Royalty;	12.5000%	12.5000%	
			Working Interest:			
			El Paso Natural Gas Co.;	76.5625%	76.5625%	
			ORRI;	10.9375%	10.9375%	
			TOTAL	100.0000%	100.0000%	
			TRACT 11			
			Royalty;	12.50%	12.50%	
			Working Interest:			
			El Paso Natural Gas Co.;	43.75%	43.75%	
Fee	(Colorado) T-32-N, R-6-W Sec. 19: E/2 NE/4	80.00	Sinclair Oil & Gas Co.;	21.87%	21.87%	.735542%
			Continental Oil Co.;	16.41%	16.41%	
			Tenneco Oil Co.;	5.47%	5.47%	
			ORRI;	0.00%	0.00%	
			TOTAL	100.00%	100.00%	
			TRACT 12			
			Royalty;	12.50%	10.9375%	
			Working Interest:			
			El Paso Natural Gas Co.;	38.28125%	38.28125%	
			ARCO	19.140625%	19.140625%	
Fee	(Colorado) T-32-N, R-6-W Sec. 20: N/2 NW/4	80.00*	Tenneco	4.785156%	4.785156%	.643599%
			Conoco	14.355469%	14.355469%	
			Burton C. Dunn*	10.9375%	10.9375%	
			ORRI;	00.0000%	00.0000%	
			TOTAL	100.000000%	85.937500%	
			TRACT 13			
			Royalty;	12.50%	10.9375%	
			Working Interest:			
			El Paso Natural Gas Co.;	38.28125%	38.28125%	
			ARCO	19.140625%	19.140625%	
*Unleased and not committed to unit (10.00 Ac.)						

\*Unleased and not committed to unit (10.00 Ac.)

SCHEDULE XIV

SERIAL NUMBER	DESCRIPTION	NUMBER OF ACRES	DRILLING BLOCK		PERCENTAGE COMMITTED	PRESENT ACTUAL PARTICIPATION
			OWNERSHIP	PERCENTAGE		
Fee	(Colorado)	152.21		TRACT 13		
	T-32-N, R-6-W		Royalty;			1.399461%
	Sec. 20: Lot 1 (NE/4 SE/4),		Working Interest:	12.50%	12.50%	
	NW/4 NE/4, E/2 NE/4		El Paso Natural Gas Co.;			
			ARCO	43.75%	43.75%	
			Tenneco	21.875%	21.875%	
			Conoco	5.46875%	5.46875%	
			ORRI;	16.40625%	16.40625%	
				00.0000%	00.0000%	
			TOTAL	100.00000%	100.00000%	
Fee	(Colorado)	160.00		TRACT 14		
	T-32-N, R-6-W		Royalty;			1.471084%
	Sec. 19: NW/4 NE/4		Working Interest:	12.50%	12.50%	
	Sec. 20: S/2 NW/4,		El Paso Natural Gas Co.;	43.75%	43.75%	
	SW/4 NE/4		Sinclair Oil & Gas Co.;	21.87%	21.87%	
			Continental Oil Co.;	16.41%	16.41%	
			Tenneco Oil Co.;	5.47%	5.47%	
			ORRI;	0.00%	0.00%	
			TOTAL	100.00%	100.00%	
	Fee	(Colorado)	160.00		TRACT 17	
T-32-N, R-7-W			Royalty;			1.471084%
Sec. 23: E/2 NE/4			Working Interest:	12.50%	12.50%	
Sec. 24: S/2 NW/4			El Paso Natural Gas Co.;	43.75%	43.75%	
			Amerada Petroleum Corp.;	43.75%	43.75%	
			ORRI;	0.00%	0.00%	
			TOTAL	100.00%	100.00%	

SCHEDULE XIV

SERIAL NUMBER	DESCRIPTION	NUMBER OF ACRES	DRILLING BLOCK		PERCENTAGE COMMITTED	PRESENT ACTUA PARTICIPATION
			OWNERSHIP	PERCENTAGE		
Fee	(Colorado) T-32-N, R-6-W Sec. 20: Lots 2, 3	64.48				
			TRACT 18			
			Royalty;	12.50%	12.50%	.592847%
			Working Interest;			
			El Paso Natural Gas Co.;	43.75%	43.75%	
			Amerada Hess Corp.;	43.75%	43.75%	
			ORRI;	00.00%	00.00%	
			TOTAL	100.00%	100.00%	
			TRACT 19			
			Royalty;	12.50%	12.50%	.735542%
		Working Interest;				
		El Paso Natural Gas Co.;	43.75%	43.75%		
		Amerada Petroleum Corp.;	43.75%	43.75%		
		ORRI;	0.00%	0.00%		
		TOTAL	100.00%	100.00%		
		TRACT 20				
		Royalty;	12.50%	12.50%	2.743481%	
		Working Interest;				
		El Paso Natural Gas Co.;	43.75%	43.75%		
		Amerada Petroleum Corp.;	43.75%	43.75%		
		ORRI;	0.00%	0.00%		
		TOTAL	100.00%	100.00%		
		TRACT 20				
		Royalty;	12.50%	12.50%	2.743481%	
		Working Interest;				
		El Paso Natural Gas Co.;	43.75%	43.75%		
		Amerada Petroleum Corp.;	43.75%	43.75%		
		ORRI;	0.00%	0.00%		
		TOTAL	100.00%	100.00%		
		TRACT 20				
		Royalty;	12.50%	12.50%	2.743481%	
		Working Interest;				
		El Paso Natural Gas Co.;	43.75%	43.75%		
		Amerada Petroleum Corp.;	43.75%	43.75%		
		ORRI;	0.00%	0.00%		
		TOTAL	100.00%	100.00%		
		TRACT 20				
		Royalty;	12.50%	12.50%	2.743481%	
		Working Interest;				
		El Paso Natural Gas Co.;	43.75%	43.75%		
		Amerada Petroleum Corp.;	43.75%	43.75%		
		ORRI;	0.00%	0.00%		
		TOTAL	100.00%	100.00%		
		TRACT 20				
		Royalty;	12.50%	12.50%	2.743481%	
		Working Interest;				
		El Paso Natural Gas Co.;	43.75%	43.75%		
		Amerada Petroleum Corp.;	43.75%	43.75%		
		ORRI;	0.00%	0.00%		
		TOTAL	100.00%	100.00%		
		TRACT 20				
		Royalty;	12.50%	12.50%	2.743481%	
		Working Interest;				
		El Paso Natural Gas Co.;	43.75%	43.75%		
		Amerada Petroleum Corp.;	43.75%	43.75%		
		ORRI;	0.00%	0.00%		
		TOTAL	100.00%	100.00%		
		TRACT 20				
		Royalty;	12.50%	12.50%	2.743481%	
		Working Interest;				
		El Paso Natural Gas Co.;	43.75%	43.75%		
		Amerada Petroleum Corp.;	43.75%	43.75%		
		ORRI;	0.00%	0.00%		
		TOTAL	100.00%	100.00%		
		TRACT 20				
		Royalty;	12.50%	12.50%	2.743481%	
		Working Interest;				
		El Paso Natural Gas Co.;	43.75%	43.75%		
		Amerada Petroleum Corp.;	43.75%	43.75%		
		ORRI;	0.00%	0.00%		
		TOTAL	100.00%	100.00%		
		TRACT 20				
		Royalty;	12.50%	12.50%	2.743481%	
		Working Interest;				
		El Paso Natural Gas Co.;	43.75%	43.75%		
		Amerada Petroleum Corp.;	43.75%	43.75%		
		ORRI;	0.00%	0.00%		
		TOTAL	100.00%	100.00%		
		TRACT 20				
		Royalty;	12.50%	12.50%	2.743481%	
		Working Interest;				
		El Paso Natural Gas Co.;	43.75%	43.75%		
		Amerada Petroleum Corp.;	43.75%	43.75%		
		ORRI;	0.00%	0.00%		
		TOTAL	100.00%	100.00%		
		TRACT 20				
		Royalty;	12.50%	12.50%	2.743481%	
		Working Interest;				
		El Paso Natural Gas Co.;	43.75%	43.75%		
		Amerada Petroleum Corp.;	43.75%	43.75%		
		ORRI;	0.00%	0.00%		
		TOTAL	100.00%	100.00%		
		TRACT 20				
		Royalty;	12.50%	12.50%	2.743481%	
		Working Interest;				
		El Paso Natural Gas Co.;	43.75%	43.75%		
		Amerada Petroleum Corp.;	43.75%	43.75%		
		ORRI;	0.00%	0.00%		
		TOTAL	100.00%	100.00%		
		TRACT 20				
		Royalty;	12.50%	12.50%	2.743481%	
		Working Interest;				
		El Paso Natural Gas Co.;	43.75%	43.75%		
		Amerada Petroleum Corp.;	43.75%	43.75%		
		ORRI;	0.00%	0.00%		
		TOTAL	100.00%	100.00%		
		TRACT 20				
		Royalty;	12.50%	12.50%	2.743481%	
		Working Interest;				
		El Paso Natural Gas Co.;	43.75%	43.75%		
		Amerada Petroleum Corp.;	43.75%	43.75%		
		ORRI;	0.00%	0.00%		
		TOTAL	100.00%	100.00%		
		TRACT 20				
		Royalty;	12.50%	12.50%	2.743481%	
		Working Interest;				
		El Paso Natural Gas Co.;	43.75%	43.75%		
		Amerada Petroleum Corp.;	43.75%	43.75%		
		ORRI;	0.00%	0.00%		
		TOTAL	100.00%	100.00%		
		TRACT 20				
		Royalty;	12.50%	12.50%	2.743481%	
		Working Interest;				
		El Paso Natural Gas Co.;	43.75%	43.75%		
		Amerada Petroleum Corp.;	43.75%	43.75%		
		ORRI;	0.00%	0.00%		
		TOTAL	100.00%	100.00%		
		TRACT 20				
		Royalty;	12.50%	12.50%	2.743481%	
		Working Interest;				
		El Paso Natural Gas Co.;	43.75%	43.75%		
		Amerada Petroleum Corp.;	43.75%	43.75%		
		ORRI;	0.00%	0.00%		
		TOTAL	100.00%	100.00%		
		TRACT 20				
		Royalty;	12.50%	12.50%	2.743481%	
		Working Interest;				
		El Paso Natural Gas Co.;	43.75%	43.75%		
		Amerada Petroleum Corp.;	43.75%	43.75%		
		ORRI;	0.00%	0.00%		
		TOTAL	100.00%	100.00%		
		TRACT 20				
		Royalty;	12.50%	12.50%	2.743481%	
		Working Interest;				
		El Paso Natural Gas Co.;	43.75%	43.75%		
		Amerada Petroleum Corp.;	43.75%	43.75%		
		ORRI;	0.00%	0.00%		
		TOTAL	100.00%	100.00%		
		TRACT 20				
		Royalty;	12.50%	12.50%	2.743481%	
		Working Interest;				
		El Paso Natural Gas Co.;	43.75%	43.75%		
		Amerada Petroleum Corp.;	43.75%	43.75%		
		ORRI;	0.00%	0.00%		
		TOTAL	100.00%	100.00%		
		TRACT 20				
		Royalty;	12.50%	12.50%	2.743481%	
		Working Interest;				
		El Paso Natural Gas Co.;	43.75%	43.75%		
		Amerada Petroleum Corp.;	43.75%	43.75%		
		ORRI;	0.00%	0.00%		
		TOTAL	100.00%	100.00%		
		TRACT 20				
		Royalty;	12.50%	12.50%	2.743481%	
		Working Interest;				
		El Paso Natural Gas Co.;	43.75%	43.75%		
		Amerada Petroleum Corp.;	43.75%	43.75%		
		ORRI;	0.00%	0.00%		
		TOTAL	100.00%	100.00%		
		TRACT 20				
		Royalty;	12.50%	12.50%	2.743481%	
		Working Interest;				
		El Paso Natural Gas Co.;	43.75%	43.75%		
		Amerada Petroleum Corp.;	43.75%	43.75%		
		ORRI;	0.00%	0.00%		
		TOTAL	100.00%	100.00%		
		TRACT 20				
		Royalty;	12.50%	12.50%	2.743481%	
		Working Interest;				
		El Paso Natural Gas Co.;	43.75%	43.75%		
		Amerada Petroleum Corp.;	43.75%	43.75%		
		ORRI;	0.00%	0.00%		
		TOTAL	100.00%	100.00%		
		TRACT 20				
		Royalty;	12.50%	12.50%	2.743481%	
		Working Interest;				
		El Paso Natural Gas Co.;	43.75%	43.75%		
		Amerada Petroleum Corp.;	43.75%	43.75%		
		ORRI;	0.00%	0.00%		
		TOTAL	100.00%	100.00%		
		TRACT 20				
		Royalty;	12.50%	12.50%	2.743481%	
		Working Interest;				
		El Paso Natural Gas Co.;	43.75%	43.75%		
		Amerada Petroleum Corp.;	43.75%	43.75%		
		ORRI;	0.00%	0.00%		
		TOTAL	100.00%	100.00%		
		TRACT 20				
		Royalty;	12.50%	12.50%	2.743481%	
		Working Interest;				
		El Paso Natural Gas Co.;	43.75%	43.75%		
		Amerada Petroleum Corp.;	43.75%	43.75%		
		ORRI;	0.00%	0.00%		
		TOTAL	100.00%	100.00%		
		TRACT 20				
		Royalty;	12.50%	12.50%	2.743481%	
		Working Interest;				
		El Paso Natural Gas Co.;	43.75%	43.75%		
		Amerada Petroleum Corp.;	43.75%	43.75%		
		ORRI;	0.00%	0.00%		
		TOTAL	100.00%	100.00%		
		TRACT 20				
		Royalty;	12.50%	12.50%	2.743481%	
		Working Interest;				
		El Paso Natural Gas Co.;	43.75%	43.75%		
		Amerada Petroleum Corp.;	43.75%	43.75%		
		ORRI;	0.00%	0.00%		
		TOTAL	100.00%	100.00%		
		TRACT 20				
		Royalty;	12.50%	12.50%	2.743481%	
		Working Interest;				
		El Paso Natural Gas Co.;	43.75%	43.75%		
		Amerada Petroleum Corp.;	43.75%	43.75%		
		ORRI;	0.00%	0.00%		
		TOTAL	100.00%	100.00%		
		TRACT 20				
		Royalty;	12.50%	12.50%	2.743481%	
		Working Interest;				
		El Paso Natural Gas Co.;	43.75%	43.75%		
		Amerada Petroleum Corp.;	43.75%	43.75%		
		ORRI;	0.00%	0.00%		
		TOTAL	100.00%	100.00%		
		TRACT 20				
		Royalty;	12.50%	12.50%	2.743481%	
		Working Interest;				
		El Paso Natural Gas Co.;	43.75%	43.75%		
		Amerada Petroleum Corp.;	43.75%	43.75%		
		ORRI;	0.00%	0.00%		
		TOTAL	100.00%	100.00%		
		TRACT 20				
		Royalty;	12.50%	12.50%	2.743481%	
		Working Interest;				
		El Paso Natural Gas Co.;	43.75%	43.75%		
		Amerada Petroleum Corp.;	43.75%	43.75%		
		ORRI;	0.00%	0.00%		
		TOTAL	100.00%	100.00%		
		TRACT 20				
		Royalty;	12.50%	12.50%	2.743481%	
		Working Interest;				
		El Paso Natural Gas Co.;	43.75%	43.75%		
		Amerada Petroleum Corp.;	43.75%	43.75%		
		ORRI;	0.00%	0.00%		
		TOTAL	100.00%	100.00%		
		TRACT 20				
		Royalty;	12.50%	12.50%	2.743481%	
		Working Interest;				
		El Paso Natural Gas Co.;	43.75%	43.75%		
		Amerada Petroleum Corp.;	43.75%	43.75%		
		ORRI;	0.00%	0.00%		
		TOTAL	100.00%	100.00%		
		TRACT 20				
		Royalty;	12.50%	12.50%	2.743481%	
		Working Interest;				
		El Paso Natural Gas Co.;	43.75%	43.75%		
		Amerada Petroleum Corp.;	43.75%	43.75%		
		ORRI;	0.00%	0.00%		
		TOTAL	100.00%	100.00%		
		TRACT 20				
		Royalty;	12.50%	12.50%	2.743481%	
		Working Interest;				
		El Paso Natural Gas Co.;	43.75%	43.75%		
		Amerada Petroleum Corp.;	43.75%	43.75%		
		ORRI;	0.00%	0.00%		
		TOTAL	100.00%	100.00%		
		TRACT 20				
		Royalty;	12.50%	12.50%	2.743481%	
		Working Interest;				
		El Paso Natural Gas Co.;	43.75%	43.75%		
		Amerada Petroleum Corp.;	43.75%	43.75%		
		ORRI;	0.00%	0.00%		
		TOTAL	100.00%	100.00%		
		TRACT 20				
		Royalty;	12.50%	12.50%	2.743481%	
		Working Interest;				
		El Paso Natural Gas Co.;	43.75%	43.75%		
		Amerada Petroleum Corp.;	43.75%	43.75%		
		ORRI;	0.00%	0.00%		
		TOTAL	100.00%	100.00%		
		TRACT 20				
		Royalty;	12.50%	12.50%	2.743481%	
		Working Interest;				
		El Paso Natural Gas Co.;	43.75%	43.75%		
		Amerada Petroleum Corp.;	43.75%	43.75%		
		ORRI;	0.00%	0.00%		
		TOTAL	100.00%	100.00%		
		TRACT 20				
		Royalty;	12.50%	12.50%	2.743481%	
		Working Interest;				
		El Paso Natural Gas Co.;	43.75%	43.75%		
		Amerada Petroleum Corp.;	43.75%	43.75%		
		ORRI;	0.00%	0.00%		
		TOTAL	100.00%	100.00%		
		TRACT 20				
		Royalty;	12.50%	12.50%	2.743481%	
		Working Interest;				
		El Paso Natural Gas Co.;	43.75%	43.75%		
		Amerada Petroleum Corp.;	43.75%	43.75%		
		ORRI;	0.00%	0.00%		
		TOTAL	100.00%	100.00%		
		TRACT 20				
		Royalty;	12.50%	12.50%	2.743481%	
		Working Interest;				
		El Paso Natural Gas Co.;	43.75%	43.75%		
		Amerada Petroleum Corp.;	43.75%	43.75%		
		ORRI;	0.00%	0.00%		
		TOTAL	100.00%	100.00%		
		TRACT 20				
		Royalty;	12.50%	12.50%	2.743481%	
		Working Interest;				
		El Paso Natural Gas Co.;	43.75%	43.75%		

SCHEDULE XIV

SERIAL NUMBER	DESCRIPTION	NUMBER OF ACRES	DRILLING BLOCK		PERCENTAGE COMMITTED	PRESENT ACTUAL PARTICIPATION
			OWNERSHIP	PERCENTAGE		
(Colorado)						
Fee	T-32-N, R-7-W	387.23	TRACT 26			
	Sec. 23: NE/4 SE/4		Royalty;	12.50%	12.50%	3.560300%
	Sec. 24: N/2 S/2, NE/4		Working Interest;			
			El Paso Natural Gas Co.;	43.75%	43.75%	
			Amerada Petroleum Corp.;	43.75%	43.75%	
		ORRI;	0.00%	0.00%		
TOTAL				100.00%	100.00%	
TRACT 27						
Fee	T-32-N, R-6-W	280.00	TRACT 27			
	Sec. 7: S/2 SE/4		Royalty;	12.50%	12.50%	2.574398%
	Sec. 17: W/2 NW/4, NW/4 SW/4		Working Interest;			
			El Paso Natural Gas Co.;	43.75%	43.75%	
			Amerada Petroleum Corp.;	43.75%	43.75%	
		ORRI;	0.00%	0.00%		
TOTAL				100.00%	100.00%	
TRACT 29						
Fee	T-32-N, R-6-W	318.57	TRACT 29			
	Sec. 7: Lot 7, SE/4 SW/4 (S/2 SW/4)		Royalty;	16.66667%	16.66667%	2.929021%
			Working Interest;			
			El Paso Natural Gas Co.;	41.66666%	41.66666%	
			Amerada Petroleum Corp.;	41.66667%	41.66667%	
		ORRI;	0.00000%	0.00000%		
TOTAL				100.00000%	100.00000%	
TRACT 13						
T-32-N, R-7-W						
	Sec. 13: NE/4					

Effective 5-1-78

SCHEDULE XI V

SERIAL NUMBER	DESCRIPTION	NUMBER OF ACRES	DRILLING BLOCK		PERCENTAGE COMMITTED	PRESENT ACTUAL PARTICIPATION
			OWNERSHIP	PERCENTAGE		
TRACT 30						
Fee	T-32-N, R-6-W Sec. 7: Lots 1,2,3, 4,5, SE/4 NW/4, S/2 NE/4 (N/2)	530.76	Royalty; Working Interest: El Paso Natural Gas Co.; Amerada Petroleum Corp.; ORRI;	12.50%  43.75% 43.75% 0.00%	12.50%  43.75% 43.75% 0.00%	4.879955%
	T-32-N, R-7-W Sec. 12: Lots 1,2,3, E/2 SW/4, SE/4					
			TOTAL	100.00%	100.00%	
TRACT 31						
Martin, et al Fee	T-32-N, R-7-W Sec. 13: SW/4, E/2 NW/4, W/2 SE/4	320.00	Royalty; Working Interest: El Paso Natural Gas Co.; Amerada Petroleum Corp.; ORRI;	12.50%  43.75% 43.75% 0.00%	12.50%  43.75% 43.75% 0.00%	2.942169%
			TOTAL	100.00%	100.00%	
TRACT 36						
Fee	T-32-N, R-7-W Sec. 24: S/2	320.00	Royalty; Working Interest: El Paso Natural Gas Co.; Amerada Petroleum Corp.; ORRI;	12.50%  43.75% 43.75% 0.00%	12.50%  43.75% 43.75% 0.00%	2.942169%
			TOTAL	100.00%	100.00%	



SCHEDULE XIV

SERIAL NUMBER	DESCRIPTION	NUMBER OF ACRES	DRILLING BLOCK		PERCENTAGE COMMITTED	PRESENT ACTUAL PARTICIPATION	
			OWNERSHIP	PERCENTAGE			
Fee	T-32-N, R-6-W Sec. 18: Lots 2, 3, SE/4 NW/4, NE/4 SW/4, S/2 NE/4, N/2 SE/4	318.91	TRACT 37				
			Royalty;	12.50%	12.50%	2.932147%	
			Working Interest:				
			El Paso Natural Gas Co.;	43.75%	43.75%		
			Amerada Petroleum Corp.;	43.75%	43.75%		
			ORRI;	0.00%	0.00%		
			TOTAL	100.00%	100.00%		
			TRACT 38				
			Royalty;	12.50%	12.50%		2.942169%
			Working Interest:				
El Paso Natural Gas Co.;	43.75%	43.75%					
Amerada Petroleum Corp.;	43.75%	43.75%					
Fee	Sec. 25: N/2 NE/4, NW/4 Sec. 26: E/2 NE/4	320.00	TRACT 39				
			Royalty;			.000000%	
			Working Interest:				
			ORRI;				
			TOTAL	100.00%	100.00%		
			TRACT 40				
			Royalty;				2.942169%
			Working Interest:				
			ORRI;				
			TOTAL	100.00%	100.00%		
Fee	T-32-N, R-6-W Sec. 20: W/2	320.00	TRACT 40				
			Royalty;	12.50%	12.50%	2.942169%	
			Working Interest:				
			El Paso Natural Gas Co.;	43.75%	43.75%		
			Amerada Petroleum Corp.;	43.75%	43.75%		
			ORRI;	0.00%	0.00%		
			TOTAL	100.00%	100.00%		

SCHEDULE XIV

SERIAL NUMBER	DESCRIPTION	NUMBER OF ACRES	DRILLING BLOCK		PERCENTAGE COMMITTED	PRESENT ACTUA PARTICIPATION
			OWNERSHIP	PERCENTAGE		
Fee	T-32-N, R-6-W	320.00				
	Sec. 18: SE/4 SW/4		Royalty;	12.50%	12.50%	2.942169%
	Sec. 19: NE/4, E/2 NW/4, NW/4 SE/4		Working Interest; El Paso Natural Gas Co.; Amerada Petroleum Corp.; ORRI;	43.75% 43.75% 0.00%	43.75% 43.75% 0.00%	
			TOTAL	100.00%	100.00%	
			TRACT 41			
Fee	T-32-N, R-6-W	319.06				
	Sec. 18: Lot 4		Royalty;	12.50%	12.50%	2.933527%
	Sec. 19: Lot 1		Working Interest; El Paso Natural Gas Co.; Amerada Petroleum Corp.; ORRI;	43.75% 43.75% 0.00%	43.75% 43.75% 0.00%	
			TOTAL	100.00%	100.00%	
			TRACT 42			
Fee	T-32-N, R-6-W	160.00				
	Sec. 29: SW/4 SW/4		Royalty;	12.50%	12.50%	1.471084%
	Sec. 30: E/2 SE/4, SW/4 SE/4		Working Interest; El Paso Natural Gas Co.; Amerada Petroleum Corp.; ORRI;	43.75% 43.75% 0.00%	43.75% 43.75% 0.00%	
			TOTAL	100.00%	100.00%	
			TRACT 43			

Effective 5-1-78

SCHEDULE XIV

SERIAL NUMBER	DESCRIPTION	NUMBER OF ACRES	DRILLING BLOCK		PERCENTAGE COMMITTED	PRESENT ACTUAL PARTICIPATION
			OWNERSHIP	PERCENTAGE		
<u>TRACT 44</u>						
Fee	T-32-N, R-7-W	320.00				
	Sec. 11: S/2 SW/4, W/2 SE/4		Royalty; Working Interest:	12.50%	12.50%	2.942169%
	Sec. 14: N/2 NW/4, SE/4 NW/4, NW/4 NE/4		El Paso Natural Gas Co.; Amerada Petroleum Corp.; ORRI;	43.75% 43.75% 0.00%	43.75% 43.75% 0.00%	
	TOTAL			<u>100.00%</u>	<u>100.00%</u>	
<u>TRACT 46</u>						
Fee	T-32-N, R-6-W	158.76				
	Sec. 19: SE/4 SW/4		Royalty;	12.50%	12.50%	1.459684%
	Sec. 30: Lot 1, NE/4 NW/4, NW/4 NE/4		Working Interest: El Paso Natural Gas Co.; Amerada Petroleum Corp.; ORRI;	43.75% 43.75% 0.00%	43.75% 43.75% 0.00%	
	TOTAL			<u>100.00%</u>	<u>100.00%</u>	

SCHEDULE XIV

RECAPITULATION

Description of Lands in Participating Area:

NEW MEXICO

Township 32 North, Range 6 West, N.M.P.M.  
Sections 7,17,18,19,20,30: All  
Sections 16,29: W/2

Township 32 North, Range 7 West, N.M.P.M.  
Section 9: Lots 1,2,3, E/2 SW/4, SE/4  
Sections 10,11,12,13,14,15,24: All  
Section 16: E/2  
Section 23: N/2, SE/4  
Section 25: N/2  
Section 26: NE/4

COLORADO

Township 32 North, Range 6 West, N.M.P.M.  
Sections 19,20: All

Township 32 North, Range 7 West, N.M.P.M.  
Section 23: E/2 NE/4, NE/4 SE/4 (E/2 E/2)  
Section 24: All

Total Number of Acres in Participating Area: 11,206.33  
Total Number of Acres Committed to Participating Area: 10,876.33

EXHIBIT "B"

ALLISON UNIT

SAN JUAN COUNTY, NEW MEXICO

ARCHULETA AND LA PLATA COUNTIES, COLORADO

GEOLOGIC REPORT

MESA VERDE PRODUCING INTERVAL

PROPOSED FOURTEENTH EXPANSION

OF THE MESA VERDE PARTICIPATING AREA

EL PASO NATURAL GAS COMPANY

By:

  
D. E. Adams, Director  
Reservoir Engineering Dept.

EXHIBIT "B"

ALLISON UNIT  
SAN JUAN COUNTY, NEW MEXICO  
ARCHULETA AND LA PLATA COUNTIES, COLORADO

GEOLOGIC REPORT  
MESA VERDE PRODUCING INTERVAL

PROPOSED FOURTEENTH EXPANSION  
OF THE MESA VERDE PARTICIPATING AREA

INTRODUCTION

The Allison Unit is situated in the northern portion of the San Juan Basin and occupies a part of the southern and southwestern flank of the Ignacio structure of Colorado. It lies predominately in Township 32 North, Ranges 6 and 7 West, San Juan County, New Mexico, with small amounts of acreage in Township 32 North, Ranges 6 and 7 West, Archuleta and La Plata Counties, Colorado.

The proposed fourteenth expansion of the Mesa Verde participating area is recommended on the basis of the geological inference drawn from the present unit completions that offset the area to the west and south.

Included with this report is one map which presents the up-to-date structural interpretation (Exhibit "C", Figure No. 1), of the Mesa Verde formation underlying the proposed area.

A detailed discussion of the lithology and stratigraphy of the Mesa Verde formation may be found in a geological report submitted for the proposed tenth and eleventh expansions of the Mesa Verde participating area.

PROPOSED FOURTEENTH EXPANSION  
OF THE MESA VERDE PARTICIPATING AREA

Effective Date: May 1, 1978

The proposed fourteenth expansion of the Mesa Verde Participating Area of the Allison Unit is based on El Paso Natural Gas Company's Allison No. 59 dually completed Mesa Verde-Dakota well, which is located 1,800' FNL and 1,190' FWL, Section 20, Township 32 North, Range 6 West, La Plata County, Colorado. This well was tested on April 14, 1978 through 0.75 inch choke with the following results:

SIPC	1,052 psia
SIPT	892 psia
IPF	2,727 Mcf/D
AOF	3,282 Mcf/D

Proposed Expanded Acreage

Township 32 North, Range 6 West  
La Plata County, Colorado  
All of Section 20 (partial section)

All of the above acreage is considered to be within the established trend of commercial production.

SCHEDULE XI

SERIAL NUMBER	DESCRIPTION	NUMBER OF ACRES	DRILLING BLOCK		PERCENTAGE COMMITTED	PRESENT ACTUAL PARTICIPATION
			OWNERSHIP	PERCENTAGE		
3e	T-32-N, R-6-W Sec. 18: SE/4 SW/4 Sec. 19: E/2 NW/4, NW/4 SE/4, NE/4	320.00	TRACT 41			3.877768%
	Royalty;			12.50%		
	Working Interest:					
	El Paso Natural Gas Co.;			43.75%		
	Amerada Petroleum Corp.;			43.75%		
	ORRI;			.00%		
	TOTAL			100.00%		
3e	T-32-N, R-7-W Sec. 13: E/2 SE/4 Sec. 24: NE/4	319.06	TRACT 42			3.866377%
	Royalty;			12.50%		
	Working Interest:					
	El Paso Natural Gas Co.;			43.75%		
	Amerada Petroleum Corp.;			43.75%		
	ORRI;			.00%		
	TOTAL			100.00%		
3e	T-32-N, R-6-W Sec. 18: Lot 4 Sec. 19: Lot 1		TRACT 44			3.877768%
	Royalty;			12.50%		
	Working Interest:					
	El Paso Natural Gas Co.;			43.75%		
	Amerada Petroleum Corp.;			43.75%		
	ORRI;			.00%		
	TOTAL			100.00%		
3e	T-32-N, R-7-W Sec. 11: S/2 SW/4, W/2 SE/4 Sec. 14: NW/4 NE/4, N/2 NW/4, SE/4 NW/4	320.00	TRACT 46			.484721%
	Royalty;			12.50%		
	Working Interest:					
	El Paso Natural Gas Co.;			43.75%		
	Amerada Petroleum Corp.;			43.75%		
	ORRI;			.00%		
	TOTAL			100.00%		
3e	T-32-N, R-6-W Sec. 19: SE/4 SW/4	40.00	TRACT 46			.484721%
	Royalty;			12.50%		
	Working Interest:					
	El Paso Natural Gas Co.;			43.75%		
	Amerada Petroleum Corp.;			43.75%		
	ORRI;			.00%		
	TOTAL			100.00%		



SCHEDULE XI

SERIAL NUMBER	DESCRIPTION	NUMBER OF ACRES	DRILLING BLOCK		PERCENTAGE COMMITTED	PRESENT ACTUAL PARTICIPATION
			OWNERSHIP	PERCENTAGE		
36	T-32-N, R-7-W Sec. 24: S/2	320.00	TRACT 36			3.877768%
	Royalty;			12.50%		
	Working Interest:					
	El Paso Natural Gas Co.;			43.75%	43.75%	
	Amerada Petroleum Corp.			43.75%	43.75%	
	ORRI;			.00%	.00%	
	TOTAL			<u>100.00%</u>	<u>100.00%</u>	
37	T-32-N, R-6-W Sec. 18: Lots 2,3,	318.91	TRACT 37			3.864559%
	SE/4 NW/4,			12.50%	12.50%	
	NE/4 SW/4,			43.75%	43.75%	
	S/2 NE/4,			43.75%	43.75%	
	N/2 SE/4			.00%	.00%	
	TOTAL			<u>100.00%</u>	<u>100.00%</u>	
38	T-32-N, R-7-W Sec. 25: N/2 NE/4,	240.00	TRACT 38			2.908326%
	NW/4			12.50%	12.50%	
	Royalty;					
	Working Interest:					
	El Paso Natural Gas Co.;			43.75%	43.75%	
	Amerada Petroleum Corp.;			43.75%	43.75%	
	ORRI;			0.00%	0.00%	
	TOTAL			<u>100.00%</u>	<u>100.00%</u>	

Effective May 1, 1978

RECAPITULATION

Description of Lands in Participating Area:

New Mexico:

Township 32 North, Range 6 West, N.M.P.M.  
Section 17: W/2  
Sections 18, 19: All

Township 32 North, Range 7 West, N.M.P.M.  
Section 9: Lots 1,2,3, SE/4, E/2 SW/4  
Sections 10,11,12,13,14,15,24: All  
Section 16: E/2  
Section 23: N/2, SE/4  
Section 25: N/2

Colorado:

Township 32 North, Range 6 West, N.M.P.M.  
Sections 19,20: All

Township 32 North, Range 7 West, N.M.P.M.  
Section 23: NE/4 SE/4, E/2 NE/4 (E/2 E/2)  
Section 24: All

Total Number of Acres in Participating Area: 8,262.17  
Total Number of Acres Committed to Participating Area: 8,252.17

EXHIBIT "B"  
ALLISON UNIT  
SAN JUAN COUNTY, NEW MEXICO  
GEOLOGIC REPORT  
DAKOTA PRODUCING INTERVAL  
PROPOSED ELEVENTH EXPANSION  
OF THE DAKOTA PARTICIPATING AREA

EL PASO NATURAL GAS COMPANY

By: R. F. Lemon  
R. F. Lemon, Director  
Reservoir Engineering Dept.

## EXHIBIT "C"

ALLISON UNIT  
SAN JUAN COUNTY, NEW MEXICO

GEOLOGIC REPORT  
DAKOTA PRODUCING INTERVAL

PROPOSED ELEVENTH EXPANSION  
OF THE DAKOTA PARTICIPATING AREA

### INTRODUCTION

The Allison Unit is located in the northern portion of the San Juan Basin and occupies a part of the southern flank of the Ignacio structure of Colorado.

Within the Allison Unit the "Dakota Producing Interval" has been tested by 22 wells of which 16 are considered to be capable of producing gas in commercial quantities. Three of these wells are located in Colorado. The "Dakota Producing Interval" as defined by the New Mexico Oil Conservation Commission in Rule 25, Order No. R-1670-C, is "... from the base of the Greenhorn limestone to a point 400 feet below the base of the said formation and consisting of the Graneros formation, the Dakota formation and the productive upper portion of the Morrison formation."

Included as part of this report are two maps entitled Exhibit "C". Exhibit "C", Figure No. 1 shows the subsurface structure of the "Dakota Producing Interval" as reflected by using the top of the Graneros formation as the mapping horizon and mean sea level as the datum plane. Exhibit "C", Figure No. 2 is an isopachous map showing the number of feet of net reservoir sandstone which is interpreted to be present within the "Dakota Producing Interval". Detailed discussions of the stratigraphy and lithology of the "Dakota Producing Interval" in the general area of the Allison Unit may be found in geologic reports which have been previously submitted.

Also included with this report as Exhibit "D", Table No. 1 is a tabulation of the Allison Unit Dakota production. This tabulation shows by well the absolute open flow potential, date of first delivery into the gathering system, cumulative gas production to January 1, 1978, production for the months of January through April, 1978 and cumulative production to May 1, 1978. Wells within the Dakota Unit Area have produced a cumulative total of 42,248,724 Mcf as of May 1, 1978.

PROPOSED ELEVENTH EXPANSION  
OF THE DAKOTA PARTICIPATING AREA

Effective Date: May 1, 1978

The proposed Eleventh Expansion of the Dakota Participating Area is based upon the completion of the Allison Unit Well No. 59, located 1800 feet from the north line and 1190 feet from the west line Section 20, T-32-N, R-6-W, La Plata County, Colorado. On April 6, 1978, the Allison Unit No. 59 well was tested for three hours through a 0.75 inch choke on 2 1/16 inch tubing with the following test results:

Shut-in	8 Days
SIPT	1372 psia
FPT	80 psia
WPC	237 psia
IP	957 Mcf/D
AOF	979 Mcf/D

Proposed Expanded Acreage

Township 32 North, Range 6 West

Section 20: All

The subject well produces from the Dakota "A" and "B" zones which are the upper and middle sandstone members of the Dakota formation. These producing horizons are correlative with other wells in the unit. The proposed acreage is inferred to be capable of producing unitized substances in commercial quantities from the Dakota "A" and "B" zones. Exhibit "C", Figure No. 2 illustrates the net reservoir sand which is interpreted to be present under the acreage proposed for admission to the Dakota Participating Area by the Eleventh Expansion.

EXHIBIT 'D'  
TABLE NO. 1

ALLISON DK  
SAN JUAN COUNTY, NEW MEXICO  
ARCHULETA & LA PLATA COUNTIES, COLORADO

VOLUMES IN MCF AT 15.025 PSIA AND 60 DEGREES F.

WELL NAME AND NO.	AUF MCF/D	DATE OF FIRST DELIVERY	1-1-78 CUM PROD	JAN.	FEB.	MAR.	APR.	1978 PROD	US-1-78 CUM PROD
ALLISON UNIT #59 DK	976		0	0	0	0	0	0	0
ALLISON UNIT #11	0		0	0	0	0	0	0	0
ALLISON UNIT #1	2326	54/08/30	2226698	3623	2849	3552	386	10410	2237108
ALLISON UNIT #7	4385	55/02/16	4361403	9405	9669	11762	6489	37325	4398728
ALLISON UNIT #9	4518	56/04/11	3540175	8420	6627	8991	7328	31366	3571541
ALLISON UNIT #10	368	56/06/01	2358	0	0	0	0	0	2358
ALLISON UNIT X #11 DK	5003	57/11/27	5408466	28964	21335	27598	17204	95101	5503567
ALLISON UNIT #12 DK	13235	58/05/02	7189803	12040	5995	5973	981	24989	7214792
ALLISON UNIT #16 DK	2756	58/10/17	1559720	5925	5173	5783	3992	20873	1580593
ALLISON UNIT #17 DK	1353	58/12/16	1620665	2141	1985	2889	1776	8791	1629456
ALLISON UNIT #13 DK	2093	59/01/28	970480	2522	1659	2244	1361	7786	978266
ALLISON UNIT #19 DK	2677	59/09/28	4218098	918	689	1381	696	3684	4221782
ALLISON UNIT #20 DK	8870	59/09/29	4251294	20671	15168	20662	19936	76437	4327731
ALLISON UNIT X #23 DK	2674	61/02/03	1451140	6652	4774	6119	3423	20968	1472108
ALLISON UNIT #25 DK	3736	63/05/13	3297642	10616	8054	10672	11829	41171	3338813
SJ 32-7 UNIT NP #39 DK	1079	63/12/09	635554	4042	3064	3950	2814	13870	649424
ALLISON UNIT #26 DK	1328	64/11/24	323049	76	0	0	0	76	323125
ALLISON UNIT NP #27 DK	1341	65/12/30	442401	3078	1572	2803	1386	8839	451240
ALLISON UNIT NP #38	3761	74/08/14	26239	0	770	0	0	770	27009
ALLISON UNIT #18	1451	74/08/14	117024	2755	1510	1921	667	6853	123877
ALLISON UNIT NP #41	1380	74/08/15	69453	36	0	24	0	60	69513
ALLISON UNIT #40	1439	74/08/19	87456	1262	1061	1696	195	4214	91670
ALLISON UNIT NP #32	2711	74/11/01	33033	917	648	939	486	2990	36023
TOTALS			41832151	124063	92602	118959	80949	416573	42248724

**El Paso** NATURAL GAS  
COMPANY

FEB 13 1978  
P. O. BOX 1492  
EL PASO, TEXAS 79978  
PHONE: 915-543-2600

February 10, 1978

Area Oil and Gas Supervisor  
United States Geological Survey  
Drawer 1857  
Roswell, New Mexico 88201

Commissioner of Public Lands  
State of New Mexico  
P. O. Box 1148  
Santa Fe, New Mexico 87501

Oil Conservation Commission  
State of New Mexico  
P. O. Box 2088  
Santa Fe, New Mexico 87501

*224*

Re: Allison Unit, I. Sec. No. 752  
San Juan County, New Mexico  
La Plata and Archuleta Counties, Colorado  
NOTICE OF COMPLETION OF ADDITIONAL WELL,  
Mesaverde Formation

Gentlemen:

Pursuant to Section 10 of the Allison Unit Agreement, I. Sec. No. 752, approved August 22, 1950, El Paso Natural Gas Company, as Unit Operator, hereby advises that the following described Mesaverde Formation well has been completed upon acreage committed to the Allison Unit.

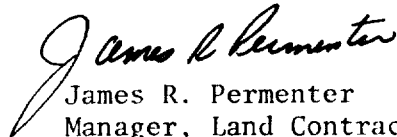
The Allison Unit #22 Well, located 1150' from the North line and 1850' from the East line of Section 25, Township 32 North, Range 7 West, N.M.P.M., was spudded on October 27, 1977, and completed on December 19, 1977, at a total depth of 6144'. The Mesaverde Formation at the intervals of 5454', 5560', 5600', 5620', 5715', 5728', 5743', 5772', 5794', 5814', 5858', 5918', 5947', 5970', 6031' and 6057', was treated with a sand-water fracturing process on December 7, 1977. The well was shut-in on December 10, 1977, and after being shut-in for nine (9) days, the Mesaverde Formation was tested on December 19, 1977, using the Pitot tube method with an after frac guage of 2077 MCF/D, with an SIPC of 1125 psia and an SIPT of 1112 psia. The spacing unit for this well is described as the N/2 of Section 25, Township 32 North, Range 7 West, N.M.P.M., containing 320.00 acres.

Area Oil and Gas Supervisor  
Commissioner of Public Lands  
Oil Conservation Commission  
February 10, 1978  
Page Two

The spacing unit for this well was included in the Allison Unit, Tenth ,  
Expanded Mesaverde Participating Area effective October 1, 1960, and the  
completion of the well does not warrant any further expansion of the  
Mesaverde Participating Area.

A copy of this letter is being sent to the working interest owners shown  
on the attached sheet.

Very truly yours,

A handwritten signature in cursive script, reading "James R. Permenter".

James R. Permenter  
Manager, Land Contracts  
and Titles  
Land Department  
Energy Resource Development

JRP/DM/sf

Attachment

Allison Unit, 4.2.1



ALLISON UNIT  
Working Interest Owners

Amerada Hess Corporation (3)

Atlantic Richfield Company (3)  
Denver, Colorado

Ruth Phillips Bisiker  
(Stockholder of Phillips Drilling Corporation)

Castle, Inc.  
(Stockholder of Phillips Drilling Corporation)

Continental Oil Company

Suzanna Phillips Kelly  
(Stockholder of Phillips Drilling Corporation)

Jane Phillips Ladoucer  
(Stockholder of Phillips Drilling Corporation)

H. H. Phillips  
(Stockholder of Phillips Drilling Corporation)

H. H. Phillips, Jr.

Winnie A. Phillips  
(Stockholder of Phillips Drilling Corporation)

Tenneco Oil Company

**El Paso** NATURAL GAS  
COMPANY

13 1978  
P. O. BOX 1492  
EL PASO, TEXAS 79978  
PHONE 915-543-2600  
Sandoz

February 10, 1978

Area Oil and Gas Supervisor  
United States Geological Survey  
Drawer 1857  
Roswell, New Mexico 88201

Commissioner of Public Lands  
State of New Mexico  
P. O. Box 1148  
Santa Fe, New Mexico 87501

Oil Conservation Commission  
State of New Mexico  
P. O. Box 2088  
Santa Fe, New Mexico 87501

Re: Allison Unit, I. Sec. No. 752  
San Juan County, New Mexico  
La Plata and Archuleta Counties, Colorado  
NOTICE OF COMPLETION OF ADDITIONAL WELL,  
Mesaverde Formation

Gentlemen:

Pursuant to Section 10 of the Allison Unit Agreement, I. Sec. No. 752, approved August 22, 1950, El Paso Natural Gas Company, as Unit Operator, hereby advises that the following described Mesaverde Formation well has been completed upon acreage committed to the Allison Unit:

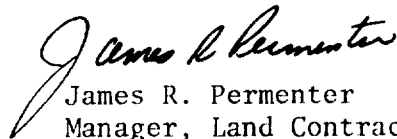
The Allison Unit #22 Well, located 1150' from the North line and 1850' from the East line of Section 25, Township 32 North, Range 7 West, N.M.P.M., was spudded on October 27, 1977, and completed on December 19, 1977, at a total depth of 6144'. The Mesaverde Formation at the intervals of 5454', 5560', 5600', 5620', 5715', 5728', 5743', 5772', 5794', 5814', 5858', 5918', 5947', 5970', 6031' and 6057', was treated with a sand-water fracturing process on December 7, 1977. The well was shut-in on December 10, 1977, and after being shut-in for nine (9) days, the Mesaverde Formation was tested on December 19, 1977, using the Pitot tube method with an after frac guage of 2077 MCF/D, with an SIPC of 1125 psia and an SIPT of 1112 psia. The spacing unit for this well is described as the N/2 of Section 25, Township 32 North, Range 7 West, N.M.P.M., containing 320.00 acres.

Area Oil and Gas Supervisor  
Commissioner of Public Lands  
Oil Conservation Commission  
February 10, 1978  
Page Two

The spacing unit for this well was included in the Allison Unit, Tenth .  
Expanded Mesaverde Participating Area effective October 1, 1960, and the  
completion of the well does not warrant any further expansion of the  
Mesaverde Participating Area.

A copy of this letter is being sent to the working interest owners shown  
on the attached sheet.

Very truly yours,

A handwritten signature in cursive script, reading "James R. Permenter".

James R. Permenter  
Manager, Land Contracts  
and Titles  
Land Department  
Energy Resource Development

JRP/DM/sf

Attachment

Allison Unit, 4.2.1

ALLISON UNIT  
Working Interest Owners

Amerada Hess Corporation (3)

Atlantic Richfield Company (3)  
Denver, Colorado

Ruth Phillips Bisiker  
(Stockholder of Phillips Drilling Corporation)

Castle, Inc.  
(Stockholder of Phillips Drilling Corporation)

Continental Oil Company

Suzanna Phillips Kelly  
(Stockholder of Phillips Drilling Corporation)

Jane Phillips Ladoucer  
(Stockholder of Phillips Drilling Corporation)

H. H. Phillips  
(Stockholder of Phillips Drilling Corporation)

H. H. Phillips, Jr.

Winnie A. Phillips  
(Stockholder of Phillips Drilling Corporation)

Tenneco Oil Company

**El Paso** NATURAL GAS  
COMPANY

P. O. BOX 1492  
EL PASO, TEXAS 79978  
PHONE: 915-543-2600

November 11, 1977

Regional Oil & Gas Supervisor  
United States Geological Survey  
Drawer 1857  
Roswell, New Mexico 88201

Commissioner of Public Lands  
State of New Mexico  
Post Office Box 1148  
Santa Fe, New Mexico 87501

Oil Conservation Commission  
State of New Mexico  
Post Office Box 2088  
Santa Fe, New Mexico 87501

Re: Allison Unit  
Rio Arriba County, New Mexico  
Revised 1977 DRILLING PROGRAM

Gentlemen:

The revised 1977 Drilling Program for the referenced unit was approved by the regulatory bodies on the following dates:

United States Geological Survey	August 10, 1977
Commissioner of Public Lands	August 11, 1977
Oil Conservation Commission	November 8, 1977

Copies of this letter are being sent to the working interest owners of the referenced unit.

Yours very truly,

*Derold Maney*  
Derold Maney  
Landman  
Land Department  
Energy Resource Development

DM:is

SJ 27-4 Unit 3.03

ALLISON UNIT  
Working Interest Owners

Amerada Hess Corporation (3)

Atlantic Richfield Company (3)  
Denver, Colorado

Ruth Phillips Bisiker  
(Stockholder of Phillips Drilling Corporation)

Castle, Inc.  
(Stockholder of Phillips Drilling Corporation)

Continental Oil Company

Suzanna Phillips Kelly  
(Stockholder of Phillips Drilling Corporation)

Jane Phillips Ladoucer  
(Stockholder of Phillips Drilling Corporation)

H. H. Phillips  
(Stockholder of Phillips Drilling Corporation)

H. H. Phillips, Jr.

Winnie A. Phillips  
(Stockholder of Phillips Drilling Corporation)

Tenneco Oil Company

NOV 13 1977

OIL CONSERVATION COMMISSION

P. O. BOX 2088

SANTA FE, NEW MEXICO 87501

November 8, 1977

C  
O  
P  
Y  
El Paso Natural Gas Company  
P. O. Box 1492  
El Paso, Texas 79978

Attention: D. N. Canfield

Re: Case No. 224  
Allison Unit  
Revised 1977 Drilling Program

Gentlemen:

We hereby approve the Revised 1977 Drilling Program for the Allison Unit, San Juan County, New Mexico, and La Plata and Archuleta Counties, Colorado, subject to like approval by the United States Geological Survey and the Commissioner of Public Lands.

One approved copy of the Plan is returned herewith.

Very truly yours,

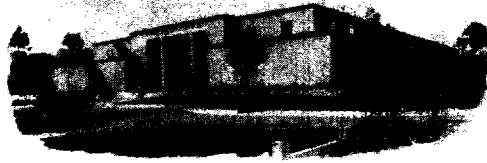
JOE D. RAMEY  
Secretary-Director

JDR/LT/fd  
enc.

cc: U.S.G.S. - Albuquerque  
U.S.G.S. - Roswell  
Commissioner of Public Lands



State of New Mexico



Commissioner of Public Lands

August 11, 1977

PHIL R. LUCERO  
COMMISSIONER

P. O. BOX 1148  
SANTA FE, NEW MEXICO 87501

El Paso Natural Gas Company  
P. O. Box 1492  
El Paso, Texas 79978

*No. 224*

Re: Allison Unit  
San Juan County, New Mexico and La Plata  
and Archuleta Counties, Colorado  
REVISED 1977 DRILLING PROGRAM

ATTENTION: Mr. D. M. Canfield

Gentlemen:

The Commissioner of Public Lands has this date approved your Revised 1977 Drilling Program for the Allison Unit, San Juan County, New Mexico and La Plata and Archuleta Counties, Colorado. This plan provides for the drilling of one Mesaverde-Dakota well on non-participating lands and one Mesaverde drainage protection Well in Sec. 25, T. 32 N., R. 7 W.

Our approval is subject to like approval by the New Mexico Oil Conservation Commission. The United States Geological Survey gave their approval August 10, 1977.

Enclosed is one approved copy for your files.

Please remit a Three (\$3.00) Dollar filing fee.

Very truly yours,

PHIL R. LUCERO  
COMMISSIONER OF PUBLIC LANDS

BY:  
RAY D. GRAHAM, Director  
Oil and Gas Division

PRL/RDG/s  
encl.  
cc:

USGS-Roswell, New Mexico  
USGS-Albuquerque, New Mexico  
OCC- Santa Fe, New Mexico ✓





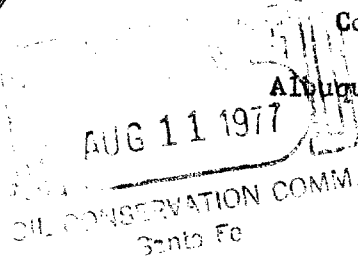
# United States Department of the Interior

GEOLOGICAL SURVEY

Conservation Division

P. O. Box 26124

Albuquerque, New Mexico 87125



AUG 10 1977

El Paso Natural Gas Company  
Attention: Mr. D. N. Canfield  
P. O. Box 1492  
El Paso, Texas 79978

*No. 224*

Gentlemen:

Your revised 1977 plan of development submitted for the Allison unit area, San Juan County, New Mexico, LaPlata and Archuleta Counties, Colorado, was approved on this date subject to like approval by the appropriate State officials.

Such plan proposes the drilling of one Mesaverde-Dakota well on non-participating lands and one Mesaverde drainage protection well in sec. 25, T. 32 N., R. 7 W.

Three approved copies of such plan are enclosed.

Sincerely yours,

(ORIG. SGD.) JAMES W. SUTHERLAND

Area Oil and Gas Supervisor

Enclosure

cc:

NMOCC, Santa Fe (ltr. only) *Handwritten: This copy*  
Com. Pub. Lands, Santa Fe (ltr. only)

**El Paso** NATURAL GAS  
COMPANY

P. O. BOX 1492  
EL PASO, TEXAS 79978  
PHONE: 915-543-2600

AUG - 2 1977

July 28, 1977

Regional Oil & Gas Supervisor  
United States Geological Survey  
Drawer 1857  
Roswell, New Mexico 88201

Commissioner of Public Lands  
State of New Mexico  
Post Office Box 1148  
Santa Fe, New Mexico 87501

No. 224

Oil Conservation Commission  
State of New Mexico  
P. O. Box 2088  
Santa Fe, New Mexico 87501

Re: Allison Unit I - Section No. 752  
San Juan County, New Mexico and La Plata  
and Archuleta Counties, Colorado  
REVISED 1977 DRILLING PROGRAM

Gentlemen:

By letter dated December 19, 1975, El Paso Natural Gas Company, as Unit Operator of the Allison Unit filed a Drilling Program covering the subject Unit for the calendar year 1976. This Program provided for the drilling of no wells and none were drilled.

As of this date, the total number of wells in the Allison Unit is as follows:

Mesaverde	5
Dakota	5
Dakota, Non-commercial	3
Dual, Mesaverde/Dakota	10
Dual, Mesaverde/Dakota (Dakota Non-commercial)	3
Dual, Mesaverde/Dakota (Dakota dry, plugged back to Mesaverde)	1
Plugged & Abandoned (Allison Nos. 3, 4, 11, 23 & 30)	5
	<u>32</u>

Regional Oil and Gas Supervisor  
Commissioner of Public Lands  
Oil Conservation Commission  
Page Two

Pursuant to Section 9 of the Allison Unit Agreement, El Paso Natural Gas Company, as Unit Operator submitted by letter dated February 25, 1977 its 1977 Drilling Program. This program was not approved and El Paso was instructed to submit a Drilling Program which would include at least one well outside the present Mesaverde participating area which would test either the Mesaverde or Dakota formations, or contract the Unit area. El Paso therefore submits this revised 1977 Drilling Program.

<u>Well No.</u>	<u>Spacing Unit</u>	<u>Formation</u>
22	N/2 Section 25, T-32-N, R-7-W, San Juan County, New Mexico	Mesaverde
59	Lots 1, 2, 3, & 4, & N/2 Section 20 (All), T-32-N, R-6-W La Plata County, Colorado	Mesaverde, Dakota Dual Test

All working interest owners have been contacted, and this Drilling Program reflects their desires. El Paso Natural Gas Company, as Unit Operator, and the working interest owners believe that all current obligations have been satisfied.

El Paso Natural Gas Company, as Unit Operator, plans to drill and offset wells required to prevent drainage of unitized substances and any other wells deemed necessary or desirable by the Unit Operator and the working interest owners.

If this Drilling Program is acceptable, please signify your approval as required under Section 9 of the Unit Agreement in the space provided on the attached sheet and return an approved copy to El Paso Natural Gas Company.

Copies of this letter are being sent to the working interest owners shown on the attached sheet.

Yours very truly,



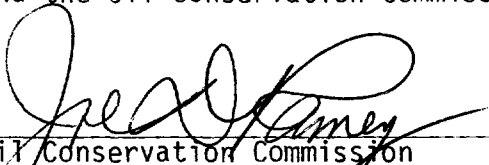
D. N. Canfield  
Director of Land  
Energy Resource Development

DNC:DM:is  
Attachments  
Allison Unit, 3.0

c: Mr. Antonio Martinez, Executive Director  
New Mexico Oil and Gas Accounting Commission  
P. O. Box 2308  
Santa Fe, New Mexico 87501

APPROVED: \_\_\_\_\_ DATE: \_\_\_\_\_  
Regional Oil & Gas Supervisor  
United States Geological Survey  
Subject to like approval by the  
Commissioner of Public Lands and  
the Oil Conservation Commission

APPROVED: \_\_\_\_\_ DATE: \_\_\_\_\_  
Commissioner of Public Lands  
Subject to like approval by the  
United States Geological Survey  
and the Oil Conservation Commission

APPROVED:  \_\_\_\_\_ DATE: Nov. 8, 1977  
Oil Conservation Commission  
Subject to like approval by the  
United States Geological Survey  
and the Commissioner of Public Lands

The foregoing approvals are for the revised 1977 Drilling Program for the Allison Unit I - Section No. 752, San Juan County, New Mexico and La Plata County and Archuleta County, Colorado.

ALLISON UNIT  
Working Interest Owners

Amerada Hess Corporation (3)

Atlantic Richfield Company (3)  
Denver, Colorado

Ruth Phillips Bisiker  
(Stockholder of Phillips Drilling Corporation)

Castle, Inc.  
(Stockholder of Phillips Drilling Corporation)

Continental Oil Company

Suzanna Phillips Kelly  
(Stockholder of Phillips Drilling Corporation)

Jane Phillips Ladoucer  
(Stockholder of Phillips Drilling Corporation)

H. H. Phillips  
(Stockholder of Phillips Drilling Corporation)

H. H. Phillips, Jr.

Winnie A. Phillips  
(Stockholder of Phillips Drilling Corporation)

Tenneco Oil Company



# United States Department of the Interior

GEOLOGICAL SURVEY  
Conservation Division  
P. O. Box 26124  
Albuquerque, New Mexico 87125

APR 13 1977

El Paso Natural Gas Company  
Attention: Mr. D. N. Canfield  
P. O. Box 1492  
El Paso, Texas 79978

Gentlemen:

This office has reviewed your 1977 plan of development submitted February 25, 1977, for the Allison unit agreement, San Juan County, New Mexico, La Plata and Archuleta Counties, Colorado. Such plan proposes the drilling of one Mesaverde well within the existing Mesaverde participating area.

The Allison unit agreement embracing 13,774.17 acres was approved by the Acting Commissioner of Indian Affairs and the Acting Director, U. S. Geological Survey, on August 22, 1950, effective as of the date of approval. Since approval two participating areas have been established. The initial Mesaverde participating area was approved effective as of July 13, 1952, embracing 360.00 acres. The thirteenth revision, approved effective as of November 1, 1965, enlarged the Mesaverde participating area to 10,757.37 acres with 10,437.37 acres committed to the unit. The initial Dakota participating area was approved effective as of September 1, 1954, embracing 640.00 acres. The tenth Dakota revision, approved effective February 1, 1974, enlarged the participating area to 7,813.21 acres with all lands committed.

Currently, there are 3,016.80 acres in the Allison unit area which are not within a participating area. The most recent participating area revision including lands not previously entitled to any unit participation was the thirteenth Mesaverde revision, over eleven years ago. Subsequent Dakota revisions have merely entitled lands already sharing in Mesaverde production to also share in Dakota production. Accordingly, inasmuch as the remaining nonparticipating lands in the unit area remain untested, your 1977 plan of development which proposes no development of these lands is not acceptable under the



# United States Department of the Interior

## GEOLOGICAL SURVEY

Western Bank Bldg., Room 815  
505 Marquette, NW  
Albuquerque, New Mexico 87102

December 29, 1976

El Paso Natural Gas Company  
Attention: Mr. Don Wadsworth  
P. O. Box 1492  
El Paso, Texas 79978

Gentlemen:

Your 1976 Plan of Development and Operation for the Allison unit area, San Juan County, New Mexico, was received in this office on December 29, 1975. Such plan provided no additional development during the year. Our letter of May 28, 1976, requested justification for no additional development and several joint conversations and conferences followed during the balance of the year with no definitive conclusion.

Authority for continuation of operations within the unitized area is derived from an approved Plan of Development and Operations, pursuant to Section 10 of the unit agreement. Accordingly, this office hereby accepts your 1976 Plan for record purposes. As stated previously, the plan is considered less than adequate inasmuch as there appears to be one or more participating areas which are not fully developed within the unitized area and no tangible justification is provided for the absence of additional development drilling in those areas.

You are requested to submit a 1977 Plan of Development and Operation for the Allison unit within 60 days of the receipt of this letter. Such plan, in order to receive favorable consideration by this office, must contain a firm commitment for additional development drilling absent tangible documentation of full development of the unitized area.

Sincerely yours,

Orig. Signed - JAMES W. SUTHERLAND

JAMES W. SUTHERLAND  
Area Oil and Gas Supervisor

cc: Durango (w/cy plan)  
NMOCC, Santa Fe  
Com. Pub. Lands, Santa Fe

JAGILLHAM:lm:122976

terms of Section 9 of the unit agreement. Section 9 provides in part that "Any plan submitted pursuant to this section shall provide for exploration of the unitized area and for the determination of the commercially productive area thereof in each and every productive formation and shall be as complete and adequate as the Supervisor, the Commissioner and the Commission may determine to be necessary for timely development and proper conservation of the oil and gas resources of the unitized area".

All copies of your 1977 plan of development are returned herewith and you are requested to file, within 30 days, a revised plan proposing as a minimum (1) the drilling of one Mesaverde or Dakota well on lands outside the Mesaverde participating area, or (2) that you advise this office of plans to contract the unit to the participating area. In the absence of a plan which meets the foregoing requirements, it will become necessary for this office to recommend that the New Mexico Oil Conservation Commission schedule a formal show cause hearing as to why the Allison unit agreement should not be contracted to eliminate all lands not in a participating area.

Sincerely yours,

(ORIG. SGD.) JAMES W. SUTHERLAND

Area Oil and Gas Supervisor

Enclosures

cc: BLM, Santa Fe  
 NMOCC, Santa Fe ← This Copy for  
 Com. Pub. Lands, Santa Fe





# United States Department of the Interior

GEOLOGICAL SURVEY

Drawer 1857  
Roswell, New Mexico 88201

May 28, 1976

El Paso Natural Gas Company  
Attention: Mr. Don Wadsworth  
P.O. Box 1492  
El Paso, Texas 79978

Gentlemen:

The following listed 1976 plans of development have been received by this office.

<u>Unit</u>	<u>Date Received</u>
San Juan 27-5	12-29-75
28-4	1-7-76
28-5	12-29-75
28-6	2-6-76
29-7	12-29-75
30-4	1-7-76
30-6	12-29-75
32-5	12-29-75
32-9	12-29-75
Allison	12-29-75
Huerfano	1-7-76
Rincon	12-29-75

All of the above listed plans propose the drilling of no additional wells.

Our letter of March 5, 1976, copy attached, requested that you advise this office of your plans to protect the Allison unit area from drainage of unitized substances as a supplement to your submitted 1976 plan. To date, no advise has been received.

A review of all other above listed plans finds, in all cases, that there are one or more participating areas which does not appear to be fully developed. Approval of such plans are therefore questionable. In order to facilitate further consideration you are requested to provide this office with geological and/or engineering data showing your prognosis of the commercial productive limits and the degree of development based

on current available data, for each participating area which does not embrace the total unit area.

Sincerely yours,

ORIGINAL SENT CARL C. TRAYWICK

**CARL C. TRAYWICK**

**Acting Area Oil and Gas Supervisor**

cc:

Durango

Farmington

NMOCC, Santa Fe

Com. Pub. lands, Santa Fe

Zerox 11 copies

1 each for above unit pod file

JAGillham:dap



# United States Department of the Interior

## GEOLOGICAL SURVEY

Drawer 1857  
Roswell, New Mexico 88201

March 5, 1976

El Paso Natural Gas Company  
Attention: Mr. D. N. Canfield  
P. O. Box 1492  
El Paso, Texas 79978

Gentlemen:

Your 1976 plan of development dated December 19, 1975, for the Allison unit area, San Juan County, New Mexico, La Plata and Archuleta Counties, Colorado, submitted for approval, has been reviewed by this office.

The Allison unit area is subject to drainage by Aztec Oil and Gas Company wells No. 1 and 2 Burnt Mesa located in the NE $\frac{1}{4}$ SW $\frac{1}{4}$  sec. 25 and SE $\frac{1}{4}$ SW $\frac{1}{4}$  sec. 26, T. 32 N., R. 7 W., N.M.P.M., respectively. Well No. 1 was completed May 12, 1972, from the Mesaverde interval 5,866 to 5,904 feet for an initial potential of 6,831 MCF of gas per day. Well No. 2 was completed June 3, 1972, from the Mesaverde interval 6,010 to 6,060 feet for an initial potential of 2,310 MCF of gas per day. Both wells commenced sales on January 9, 1975, and now have production history in excess of one year.

Please advise this office of your plans to protect the Allison unit area from drainage by the above Mesaverde wells. Such advice will expedite consideration of the 1976 Plan of Development by this office.

Sincerely yours,

*for* *ATG*  
(ORIGINAL) CARL C. TRAYWICK

CARL C. TRAYWICK  
Acting Area Oil and Gas Supervisor

cc:  
Durango  
Com. Pub. Lands, Santa Fe  
N.M.O.C.C., Santa Fe ✓

JAGillham:lh

**OIL CONSERVATION COMMISSION**

**P. O. BOX 2088  
SANTA FE, NEW MEXICO 87501**

**January 8, 1976**

**El Paso Natural Gas Company  
P. O. Box 1492  
El Paso, Texas 79978**

**Attention: Mr. D. N. Canfield**

**Re: 1976 Drilling Program,  
Allison Unit, San Juan County,  
New Mexico.**

**Gentlemen:**

**This is to advise that the New Mexico Oil Conservation Commission has this date approved the Drilling Program for the calendar year 1976 providing for the drilling of no wells for the Allison Unit, San Juan County, New Mexico, subject to like approval by the United States Geological Survey and the Commissioner of Public Lands of the State of New Mexico.**

**Two approved copies of the program are returned herewith.**

**Very truly yours,**

**JOE D. RAMEY  
Secretary-Director**

**JDR/JEK/og**

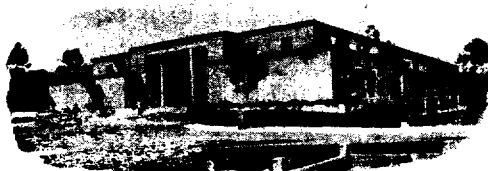
**cc: United States Geological Survey  
Box 1857  
Roswell, New Mexico**

**Commissioner of Public Lands  
Santa Fe, New Mexico**



PHIL R. LUCERO  
COMMISSIONER

# State of New Mexico



## Commissioner of Public Lands January 6, 1976

TELEPHONE  
505-827-2748

P. O. BOX 1148  
SANTA FE, NEW MEXICO 87501

El Paso Natural Gas Company  
P. O. Box 1492  
El Paso, Texas 79999

Re: Allison Unit  
San Juan County, New Mexico  
La Plata & Archuleta Counties,  
Colorado- 1976 DRILLING PROGRAM

ATTENTION: Mr. D. N. Canfield

Gentlemen:

The Commissioner of Public Lands has this date approved your 1976 Drilling Program for the Allison Unit, San Juan County, New Mexico and La Plata & Archuleta Counties, Colorado. Such plan proposes the drilling of no wells during the year 1976. This approval is subject to like approval by the United States Geological Survey and the Oil Conservation Commission.

In the future please submit Three (3) copies of your Plan of Development. We shall retain two copies and return one approved copy to you.

Enclosed is one approved copy for your files.

Please remit a Three (\$3.00) Dollar filing fee.

Very truly yours,

PHIL R. LUCERO  
COMMISSIONER OF PUBLIC LANDS

BY:  
RAY D. GRAHAM, Director  
Oil and Gas Division

PRL/RDG/s

encl.

cc: USGS-Roswell, New Mexico  
OCC- Santa Fe, New Mexico

December 19, 1975

Regional Oil & Gas Supervisor  
United States Geological Survey  
Drawer 1857  
Roswell, New Mexico 88201

Commissioner of Public Lands  
State of New Mexico  
P. O. Box 1148  
Santa Fe, New Mexico 87501

Oil Conservation Commission  
State of New Mexico  
P. O. Box 2088  
Santa Fe, New Mexico 87501

Re: Allison Unit I - Section No. 752  
San Juan County, New Mexico  
La Plata & Archuleta Counties,  
Colorado - 1976 DRILLING PROGRAM

Gentlemen:

By letter dated March 24, 1975, El Paso Natural Gas Company, as Unit Operator, filed a Drilling Program covering the captioned Unit for the calendar year 1975, calling for the drilling of no wells and none were drilled.

As of this date, the total number of wells located on acreage committed or partially committed to the Allison Unit is as follows:

Mesaverde	5
Dakota	5
Dakota, Non-Commercial	3
Dual, Mesaverde/Dakota	10
Dual, Mesaverde/Dakota (Dakota Non-Commercial)	3
Dual, Mesaverde/Dakota (Dakota dry, plugged back to Mesaverde)	1
Plugged & Abandoned (Allison #3, #4, #11, #23, #30)	5
	<u>32</u>

Regional Oil & Gas Supervisor  
Commissioner of Public Lands  
Oil Conservation Commission

December 19, 1975  
Page 2.

---

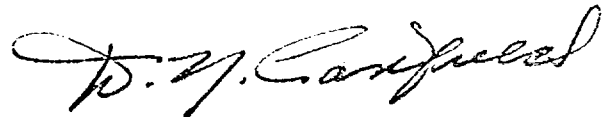
Pursuant to Section 9 of the Unit Agreement, El Paso Natural Gas Company, as Unit Operator, hereby submits a proposed Drilling Program for the calendar year 1976, providing for the drilling of no wells.

El Paso Natural Gas Company, as Unit Operator, will protect the Unit from drainage and will drill any other wells deemed necessary or desirable by the Unit Operator and the working interest owners in the affected spacing units. None of the working interest owners have requested additional development within the Unit during 1976. El Paso Natural Gas Company, as Unit Operator, and the working interest owners believe that all current Unit obligations have been satisfied.

If this Drilling Program is acceptable, please signify your approval as required under Section 9 of the Unit Agreement in the space provided on the attached sheet and return an approved copy to El Paso Natural Gas Company.

Copies of this Drilling Program are being sent to the working interest owners shown on the attached sheet.

Very truly yours,



D. N. Canfield  
Director of Land  
Energy Resource Development

DNC:DW:sas  
Attachments  
Allison 3.0

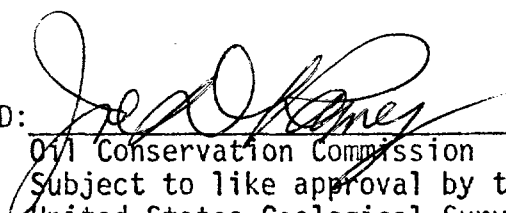
cc: Mr. Antonio Martinez  
Executive Director  
New Mexico Oil and Gas  
Accounting Commission  
P. O. Box 2308  
Santa Fe, New Mexico 87501

APPROVED: \_\_\_\_\_  
Regional Oil & Gas Supervisor  
United States Geological Survey  
Subject to like approval by the  
Commissioner of Public Lands and  
the Oil Conservation Commission

DATE: \_\_\_\_\_

APPROVED: \_\_\_\_\_  
Commissioner of Public Lands  
Subject to like approval by the  
United States Geological Survey  
and the Oil Conservation Commission

DATE: \_\_\_\_\_

APPROVED:  \_\_\_\_\_  
Oil Conservation Commission  
Subject to like approval by the  
United States Geological Survey  
and the Commissioner of Public Lands

DATE: January 8, 1976

The foregoing approvals are for the 1976 Drilling Program for the Allison Unit I - Section No. 752, San Juan County, New Mexico, and La Plata County and Archuleta County, Colorado.



ALLISON UNIT  
Working Interest Owners

Amerada Hess Corporation (3)

Atlantic Richfield Company (3)  
Denver, Colorado

Ruth Phillips Bisiker  
(Stockholder of Phillips Drilling Corporation)

Castle, Inc.  
(Stockholder of Phillips Drilling Corporation)

Continental Oil Company

Suzanna Phillips Kelly  
(Stockholder of Phillips Drilling Corporation)

Jane Phillips Ladoucer  
(Stockholder of Phillips Drilling Corporation)

H. H. Phillips  
(Stockholder of Phillips Drilling Corporation)

H. H. Phillips, Jr.

Winnie A. Phillips  
(Stockholder of Phillips Drilling Corporation)

Tenneco Oil Company