

OIL CONSERVATION COMMISSION

P. O. BOX 2088

SANTA FE NEW MEXICO 87501

January 14, 1975

Perry R. Bass  
Fort Worth National Bank Building  
Fort Worth, Texas 76102

Attention: Mr. W. A. Hamilton

Re: 1975 Plan of Development,  
Big Eddy Unit, Eddy  
County, New Mexico.

Gentlemen:

This is to advise that the New Mexico Oil Conservation Commission has this date approved the 1975 Plan of Development dated December 12, 1974, for the Big Eddy Unit, Eddy County, New Mexico, subject to like approval by the United States Geological Survey and the Commissioner of Public Lands of the State of New Mexico.

One approved copy of the plan is returned herewith.

Very truly yours,

A. L. PORTER, Jr.  
Secretary-Director

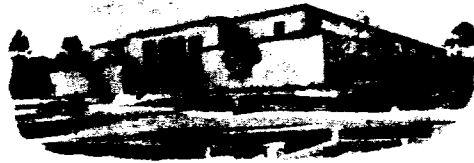
ALP/UEK/oa

cc: Commissioner of Public Lands  
Santa Fe, New Mexico

United States Geological Survey  
Roswell, New Mexico

State of New Mexico

TELEPHONE  
505-827-2748



Commissioner of Public Lands

January 10, 1975

PHIL R. LUCERO  
COMMISSIONER

P. O. BOX 1148  
SANTA FE, NEW MEXICO 87501

Bass Enterprises Production Company  
Fort Worth National Bank Building  
Fort Worth, Texas 76102

Re: 1975 Plan of Development  
Big Eddy Unit  
Eddy County, New Mexico

ATTENTION: Mr. Wm. Arthur Hamilton

Gentlemen:

The Commissioner of Public Lands has this date approved your 1975 Plan of Development for the Big Eddy Unit, Eddy County, New Mexico. Such plan proposes the re-entry and deepening of unit well No. 32 in Sec. 15, T. 21 S., R. 28 E., to the Morrow and the drilling of two Morrow wells. This approval is subject to like approval by the New Mexico Oil Conservation Commission. The USGS approved the plan on December 23, 1974.

Enclosed is one copy of the plan.

Please remit a Three (\$3.00) Dollar filing fee.

Very truly yours,

PHIL R. LUCERO  
COMMISSIONER OF PUBLIC LANDS

BY:  
ROMULO U. MARTINEZ-  
Assistant Director  
Oil and Gas Division

PRL/RUM/s  
encls.  
cc:

USGS-Roswell, New Mexico  
OCC- Santa Fe, New Mexico ✓

BASS ENTERPRISES PRODUCTION CO.  
FORT WORTH NATIONAL BANK BUILDING  
FORT WORTH, TEXAS 76102

January 6, 1975

Oil Conservation Commission  
P. O. Box 2088  
Santa Fe, New Mexico 87501

RE: 1975 Plan of Development  
Big Eddy Unit  
Eddy County, New Mexico

Gentlemen:

We are attaching hereto in duplicate proposed Plan of Development for the above unit for 1975. If this plan meets with your approval, we would appreciate it if one copy could be signed and returned for our files.

To your file copy we have attached a copy of this Plan of Development, which has previously been approved by the U.S.G.S.

Yours very truly,

PERRY R. BASS

By

Wm. Arthur Hamilton

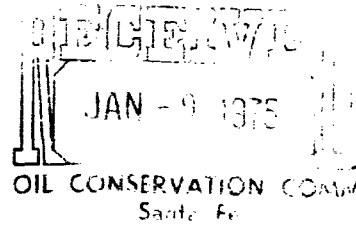
PERRY R. BASS  
FORT WORTH NATIONAL BANK BUILDING  
FORT WORTH, TEXAS  
76102

December 12, 1974

United States Geological Survey (3)  
Drawer 1857  
Roswell, New Mexico 88201

Commissioner of Public Lands (2)  
P. O. Box 1148  
Santa Fe, New Mexico 87501

Oil Conservation Commission (2)  
P. O. Box 2088  
Santa Fe, New Mexico 87501



RE: 1975 Plan of Development  
Big Eddy Unit -  
Eddy County, New Mexico

Gentlemen:

In accordance with Section 10 of the Big Eddy Unit Agreement, Perry R. Bass, Operator for said Unit, hereby submits a Plan of Development for the above captioned Unit for 1975.

HISTORY OF PAST DEVELOPMENT

We refer to our previous Plans of Development for a detailed description of past development on this Unit. To date, we have drilled, or caused to be drilled, 28 deep tests within the Unit area. By deep tests, it is meant that the wells were drilled to approximately 12,000', or deeper, to test the Pennsylvanian and/or Devonian formations. In addition to the deep tests, five shallow tests have also been drilled.

1974 ACTIVITY

During the year of 1974 we conducted 60 miles of seismograph lines on this Unit costing approximately \$104,000.00. We attach a map hereto showing the location of this work.

In addition to the above we drilled Big Eddy No. 38 to a total depth of 13,335' in the Morrow formation and completed the well on March 12, 1974, from Morrow perforations 13,068-13,212'. After acidizing with 5,000 gallons

the well tested CAOF 8,337 MCFGPD. This well is currently shut-in and waiting on pipeline connection. SIP on November 20, 1974, was 4,050 psi.

Big Eddy No. 39 after testing CAOF of 9 MMCFGPD from Morrow perforations 11,762-11,853' is currently shut-in and waiting on pipeline connection. SIP on November 20, 1974, was 4,025 psi.

Big Eddy No. 40 located in SW/4 NE/4 of Section 22, T21S, R29E was spudded March 22, 1974, and was drilled to a depth of 13,300' in the Morrow formation. This well is now attempting completion after acidizing Morrow formation perforations from 13,047-13,185' with 6,000 gallons. The Morrow formation will be fraced in this well.

Big Eddy No. 41 located in NW/4 SE/4 of Section 35, T21S, R28E was spudded August 20, 1974, and was drilled to a total depth of 12,660' in the Morrow formation. This well is currently attempting completion in Morrow perforations 12,414-12,418', 12,433-12,437', 12,454-12,458', 12,461-12,467' and 12,472-12,476' after acidizing with 3,000 gallons. On November 25, 1974, this well flowed 595 MCFGPD on a 20/64" choke with FTP 240 psi.

#### FUTURE DEVELOPMENT

We anticipate deepening the Pennzoil No. 32 Big Eddy well located in SW/4 SW/4 Section 15, T21S, R28E from the present depth of 11,578' to a depth of approximately 12,500' to test the Morrow formation.

We also have a tentative location in SE/4 NW/4 of Section 32, T21S, R29E for a 13,000' Morrow test.

In addition to the above we have tentative plans for another wildcat well on the Unit.

#### OFFSET OBLIGATIONS

Appropriate and adequate measures will be taken to prevent drainage of unitized substances from land subject to the Big Eddy Unit Agreement, or, pursuant to applicable regulation, fair and reasonable compensatory royalty will be paid as provided by the Unit Agreement.

#### ADDITIONAL DEVELOPMENT

This Plan of Development shall constitute the drilling obligations of the Unit Operator under the terms of the Big Eddy Unit Agreement for the period ending December 31, 1975.

MODIFICATIONS

It is understood that this Plan of Development may be modified from time to time to meet changing conditions.

EFFECTIVE DATE

This Plan of Development shall be effective January 1, 1975.

If this Plan of Development meets with your approval, please indicate in the appropriate space provided below and return one copy for our files.

Yours very truly,

PERRY R. BASS, Unit Operator

By: Wm. Arthur Hamilton

Approved: \_\_\_\_\_ Date: \_\_\_\_\_  
Supervisor, United States Geological Survey

Approved: \_\_\_\_\_ Date: \_\_\_\_\_  
Commissioner of Public Lands

Approved: A. L. Carter Date: January 14, 1975  
Oil Conservation Commission