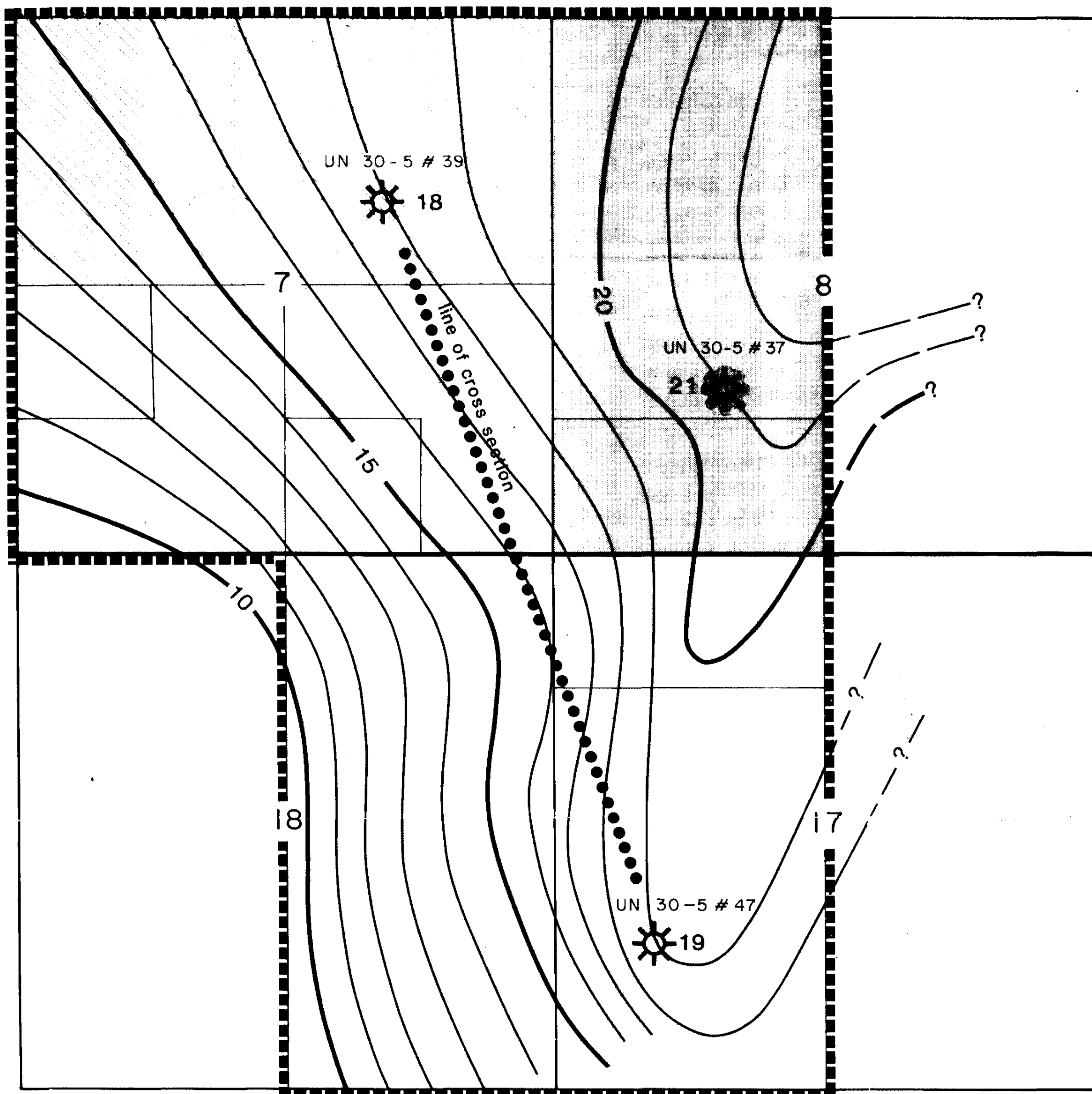


R 5 W



T
30
N

NORTHWEST PIPELINE CORPORATION

EXHIBIT "C" FIGURE NO.2

BASIN DAKOTA

SAN JUAN 30-5 UNIT

Rio Arriba County., New Mexico

DATE: January 1981 (Info. as of November 1975)

NET DAKOTA MARINE SAND ISOPACH

CONTOUR INTERVAL: 1 ft

- PRESENT Kd
PARTICIPATING AREA ☐
- 1ST Kd EXPANSION
EFFECTIVE 7-1-75 ☐
- 2ND Kd EXPANSION
EFFECTIVE 8-1-75 ☐

0 .5 Mile
Scale