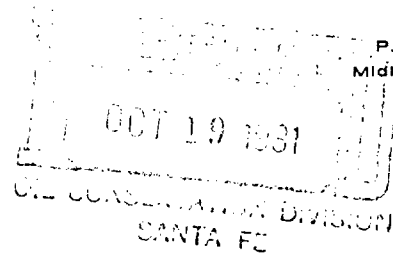


Gulf Oil Exploration and Production Company

R. E. Griffith
MANAGER LAND, SOUTHWEST DISTRICT

P.O. Box 1150
Midland, TX 79701



October 14, 1981

RE: Proposed East White Ranch Unit,
CHAVES COUNTY, New Mexico and East
Chosa Draw Unit, EDDY COUNTY, New
Mexico.

State of New Mexico
Energy and Minerals Dept.
Oil Conservation Division
P. O. Box 2086
Santa Fe, New Mexico 87501

Attention: Mr. Daniel S. Nutter

Gentlemen:

Reference is made to the October 7, 1981 Examiner's Hearing in which Gulf Oil Corporation presented testimony in case 7363 and 7364 proposed East White Ranch Unit and East Chosa Draw Unit, respectively.

Pursuant to your request Gulf Oil Corporation respectfully submits three (3) copies of the structure map for each of the captioned units and propose that they be included as Exhibit 3 in each case.

For your file is a copy of the letter of approval from the Commissioner of Public Land for the formation of the East Chosa Draw Unit.

Gulf appologizes for the late submission of these exhibits and we appreciate the examiner's understanding in this regard.

If you have any questions please contact me at 915-685-4804.

Yours very truly,

A handwritten signature in cursive script that reads "Mickey F. Cohlmia".

MICKEY F. COHLMIA
Senior Land Agent

MFC/ac
Enclosure



A DIVISION OF GULF OIL CORPORATION

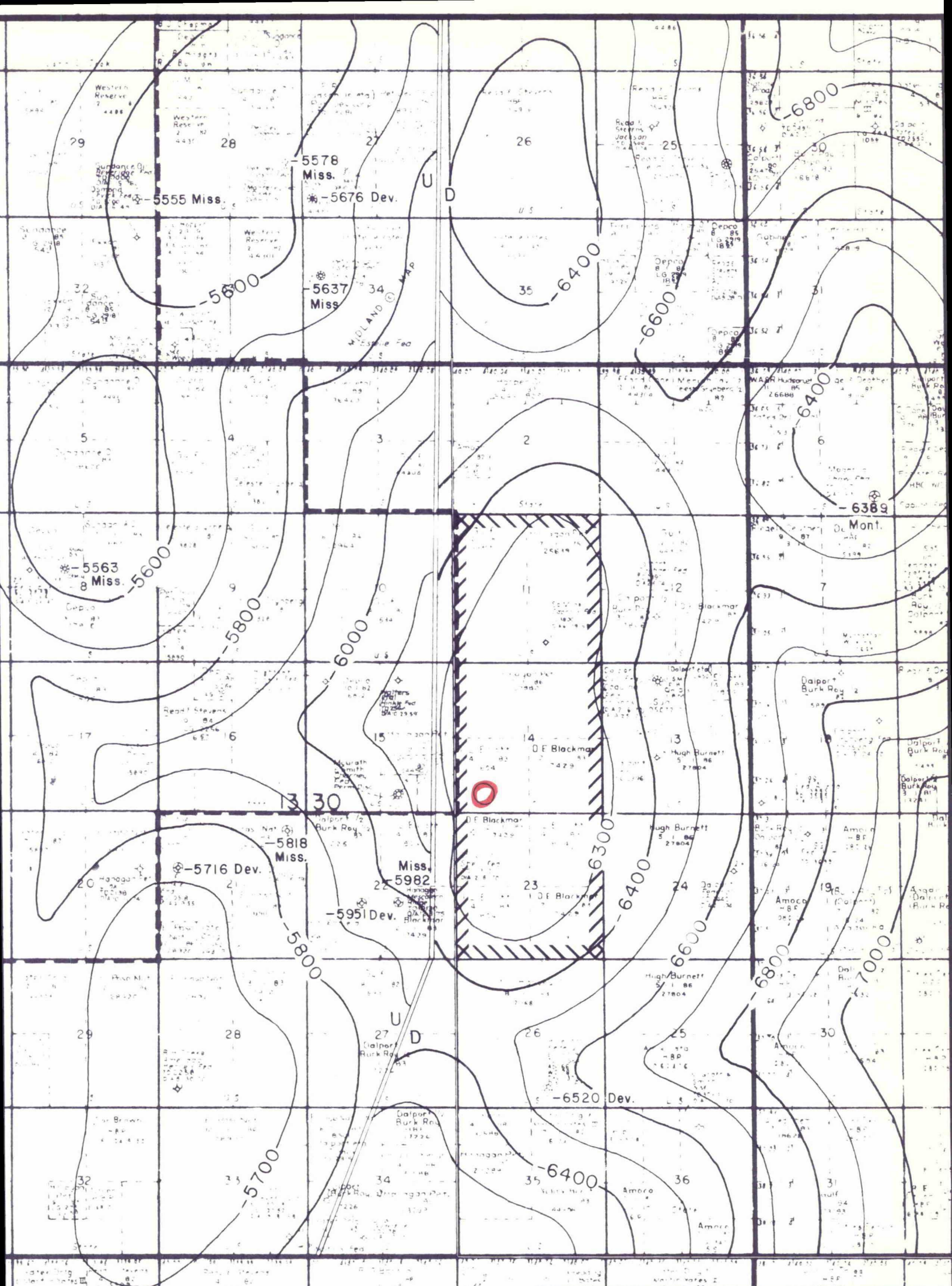


EXHIBIT III
CASE # 7363
GULF OIL CORPORATION

**EAST WHITE RANCH UNIT
CHAVES COUNTY, NEW MEXICO
STRUCTURE MAP ON TOP
OF CHESTER FORMATION**

 PROPOSED LOCATION
 UNIT OUTLINE

SCALE 1" = 4000'

CI = 100'

GULF OIL CORP.

