

UNITED STATES  
DEPARTMENT OF THE INTERIOR  
BUREAU OF LAND MANAGEMENT

APPLICATION FOR PERMIT TO DRILL, DEEPEN, OR PLUG BACK

1a. TYPE OF WORK

DRILL ☒

DEEPEN ☐

PLUG BACK ☐

b. TYPE OF WELL

OIL  
WELL ☐

GAS  
WELL ☒

OTHER

SINGLE  
ZONE ☒

MULTIPLE  
ZONE ☐

2. NAME OF OPERATOR

TEXMEX SEVEN LTD

3. ADDRESS OF OPERATOR

150 Washington Ave, ste 202, Santa Fe, NM 87501

4. LOCATION OF WELL (Report location clearly and in accordance with any State requirements.)\*

At surface

660'fs & el

At proposed prod. zone

same

14. DISTANCE IN MILES AND DIRECTION FROM NEAREST TOWN OR POST OFFICE\*

16 miles NE of Pinon, New Mexico

15. DISTANCE FROM PROPOSED\*

LOCATION TO NEAREST  
PROPERTY OR LEASE LINE, FT.  
(Also to nearest drlg. unit line, if any)

660'

18. DISTANCE FROM PROPOSED LOCATION\*

TO NEAREST WELL, DRILLING, COMPLETED,  
OR APPLIED FOR, ON THIS LEASE, FT.

None

21. ELEVATIONS (Show whether DF, RT, GR, etc.)

GR: 5,478

23. PROPOSED CASING AND CEMENTING PROGRAM

SIZE OF HOLE	SIZE OF CASING	WEIGHT PER FOOT	SETTING DEPTH	QUANTITY OF CEMENT
11"	8 5/8	24#	1,200	500sx class "C" Circulate
7 7/8	4 1/2	14#	2,600	300sx class "H"

Mud Program:

0-1,200 Air & foam  
1,200-2,600 Air & foam  
@ TD load hole w/ fresh water for logging

BOP Program:

Will comply with Federal specs for 2M system, Exhibit "F"  
will be filed when drilling contractor is selected.

BEFORE EXAMINER STOGNER

Oil Conservation Division

Exhibit No. 9

Case No. 9620

IN ABOVE SPACE DESCRIBE PROPOSED PROGRAM: If proposal is to deepen or plug back, give data on present productive zone and proposed new productive zone. If proposal is to drill or deepen directionally, give pertinent data on subsurface locations and measured and true vertical depths. Give blowout preventer program, if any.

SIGNED

*E. Richard Neff*

TITLE General Partner

DATE 3-13-89

(This space for Federal or State office use)

PERMIT NO.

APPROVAL DATE

APPROVED BY

TITLE

DATE

CONDITIONS OF APPROVAL, IF ANY:

\*See Instructions On Reverse Side

## APPLICATION FOR DRILLING

TEXMEX SEVEN LTD  
Pretty Bird Unit, Well No. 1  
660' FS & EL, Sec. 6 T-19-S R-18-E  
Chaves County, New Mexico  
Lease No. NM  
(Wildcat Well)

In conjunction with Form 3160-3, Application for Permit to Drill subject well, TEXMEX SEVEN LTD submits the following items of pertinent information in accordance with BLM requirements:

1. The geologic surface formation is Permian-San Andres with quaternary alluvium and other surface deposits.

2. The estimated tops of geologic markers are as follows:

Glorieta	430'
Tubb	1645'
Abo	2200'
Hueco	2300'
Pennsylvanian	2500'
TD	2600'

3. The estimated depth at which anticipated water, oil or gas formations are expected to be encountered:

Water: Random fresh water from surface to 550 feet.  
Gas: Abo at 2350', Pennsylvanian at 2550'.  
Oil: None.

4. Proposed Casing Program: See Form 3160-3.

5. Pressure Control Equipment: See Form 3160-3 and Exhibit "F".

6. Mud Program: Air drilled, see Form 3160-3.

7. Auxiliary Equipment: Blowout preventer as per 2M system requirements published in the Federal Register pg. 46806, kelly cock and stabbing valve.

8. Testing, Logging and Coring Program:

Logging: Gamma Ray	Surface to TD
CNL-FDC w/GR	1200 to TD
Dual Induction-MSFL	1200 to TD
Drill Stem Tests: None planned	
Coring: None planned	

9. No abnormal pressures or temperatures are anticipated. In the event abnormal pressures are encountered, A mud program will be implemented to control the well.

10. Anticipated starting date: April 30, 1989.

Anticipated completion of drilling operations: May 15, 1989.

## MULTI-POINT SURFACE USE AND OPERATIONS PLAN

TEXMEX SEVEN LTD  
Pretty Bird Unit, Well No. 1  
660' FS & EL, Sec. 6 T-19-S R-18-E  
Chaves County, New Mexico  
Lease No. NM  
(Wildcat Well)

This plan is submitted with the Application for Permit to Drill the above described well. The purpose of the plan is to describe the location of the proposed well, the proposed construction activities and operations plan, to be followed in rehabilitating the surface after completion of the operation so that a complete appraisal can be made of the environmental effects associated with the operations.

### 1. EXISTING ROADS:

A. Exhibit "A" is a portion of a BLM Quad map showing the location of the well as staked. Exhibit "B" is a USGS topo plat showing the location of the well as staked. Exhibit "C" is the surveyors plat showing the location of the well as staked. The well site location is approximately 40 miles west of Artesia, New Mexico, 12 miles south of Dunken, New Mexico, and 16 miles north-east of Pinon, New Mexico. Traveling west from Artesia, there are 65.5 miles of paved U.S. and State Hwy, 7.2 miles of light duty caliche road, and 4.2 miles of unimproved ranch road.

B. Directions: From Artesia, drive 50 miles west on US 82, Turn south on State 24 and drive 15.5 miles. Turn east at mile marker 35 (Guadalupe Rim Road). Drive 7.2 miles to intersection. Turn due north and follow unimproved ranch road 4.2 miles to stake on left. Prior to roadwork, 4wd vehicles only on ranch road.

### 2. PLANNED ACCESS ROAD:

A. Length and Width: No New road is planned: The drilling pad is located adjacent to the existing ranch road.

B. Construction: The existing 4.2 mile ranch road will be improved by grading and caliche topping if warranted, providing for proper drainage.

C. Turnouts: None required.

D. Culverts: None required.

E. Cuts and Fills: There will be minor leveling to comply with ranchers request.

F. Gates, Cattleguards: None required.

### **3. LOCATION OF EXISTING WELLS:**

A. Exhibit "C" is a 1:24000 land plat showing no wells located within two mile radius.

### **4. LOCATION OF EXISTING AND/OR PROPOSED FACILITIES:**

A. There are no production facilities on this lease.

B. If the well proves to be commercial, the necessary production facilities, gas separation-process equipment and tank battery will be installed on the drilling pad.

### **5. LOCATION AND TYPE OF WATER SUPPLY:**

A. It is planned to drill the proposed well with air. Any water will be obtained from private or commercial sources and will be transported over the existing and proposed access roads.

### **6. SOURCE OF CONSTRUCTION MATERIALS:**

A. Caliche and dirt for surfacing the road and the well site pad will be obtained from sources on State surface on the Cauhape ranch. The topsoil from the location will be stockpiled near the location for future rehabilitation use. No surface materials will be disturbed except for those necessary for actual grading and leveling of the drill site and access road.

### **7. METHODS OF HANDLING WASTE DISPOSAL:**

A. Drill cuttings will be disposed of in the reserve pit.

B. Drilling fluids will be allowed to evaporate in the reserve pits until the pits are dry.

C. All pits will be fenced with normal fencing materials to prevent livestock from entering the area.

D. Water produced during operations will be collected in tanks until hauled to an approved disposal system, or a separate disposal application will be submitted to BLM for approval.

E. Current laws and regulations pertaining to the disposal of human waste will be complied with.

F. Oil produced during operations will be stored in tanks until sold.

G. Trash, waste paper, garbage and junk will be buried in a separate trash pit and covered with a minimum of 24 inches of dirt. All waste material will be contained to prevent scattering by the wind.

H. All trash and debris will be buried or removed from the wellsite within 30 days after finishing drilling and/or completion operations.

**8. ANCILLARY FACILITIES:**

A. None Required.

**9. WELLSITE LAYOUT:**

A. Exhibit "D" shows the dimensions of the well pad and reserve pits. The pad and pit area has been staked and flagged (400 X 400).

B. Mat Size: 160 X 160, including waste and reserve pits.

C. Cut and Fill: Minor leveling of the Mat will be required.

D. The surface will be topped with compacted caliche and the reserve pit will be plastic lined.

**10. PLANS FOR RESTORATION OF THE SURFACE:**

A. After completion of drilling and/or completion operations all equipment and other materials not needed for operations will be removed. Pits will be filled and the location cleaned of all trash and junk to leave the wellsite in an aesthetically pleasing a condition as possible.

B. Any unguarded pits containing fluids will be fenced until they are filled.

C. If the proposed well is non-productive, all rehabilitation and/or vegetation requirements of the Bureau of Land Management will be accomplished as expeditiously as possible. All pits will be filled and leveled within 90 days after abandonment.

**11. OTHER INFORMATION:**

A. Topography: The proposed location is on a relative level area adjacent to the existing ranch road.

B. Soil: The topsoil at the proposed drillsite is sandy loam.

C. Flora and Fauna: The vegetative cover consists of sparse grass and scattered juniper, yucca and other cactus. Wildlife in the area is typical of semi-arid desert land and includes deer, coyotes, rabbits, rodents, reptiles, dove and quail.

D. Ponds and Streams: Intermittent stream in Crooked Canyon, located about 600' northwest of the location.

E. Residences and Other Structures: None

F. Land Use: Cattle and Sheep grazing.

G. Surface Ownership: The proposed location and access road are on State Surface (Federal Minerals). The surface is leased to Cauhape Ranch and subleased to David Kincaid of Roswell, New Mexico.

H. On cursory examination, the operator found no archaeological, historical or cultural sites in the area, However an archaeological survey will be conducted by qualified archaeologists during or prior to the "on site" inspection by BLM, and submitted to the appropriate government agencies.


## **12. OPERATOR'S REPRESENTATIVE:**

A. The field representative responsible for assuring compliance with the approved surface use and operations plan is as follows:

E. Richard Neff	Office Phone	505-982-6199
TEXMEX SEVEN LTD	Home Phone	505-984-1235
150 Washington Ave, Suite 202		
Santa Fe, NM 87501		

## **13. CERTIFICATION:**

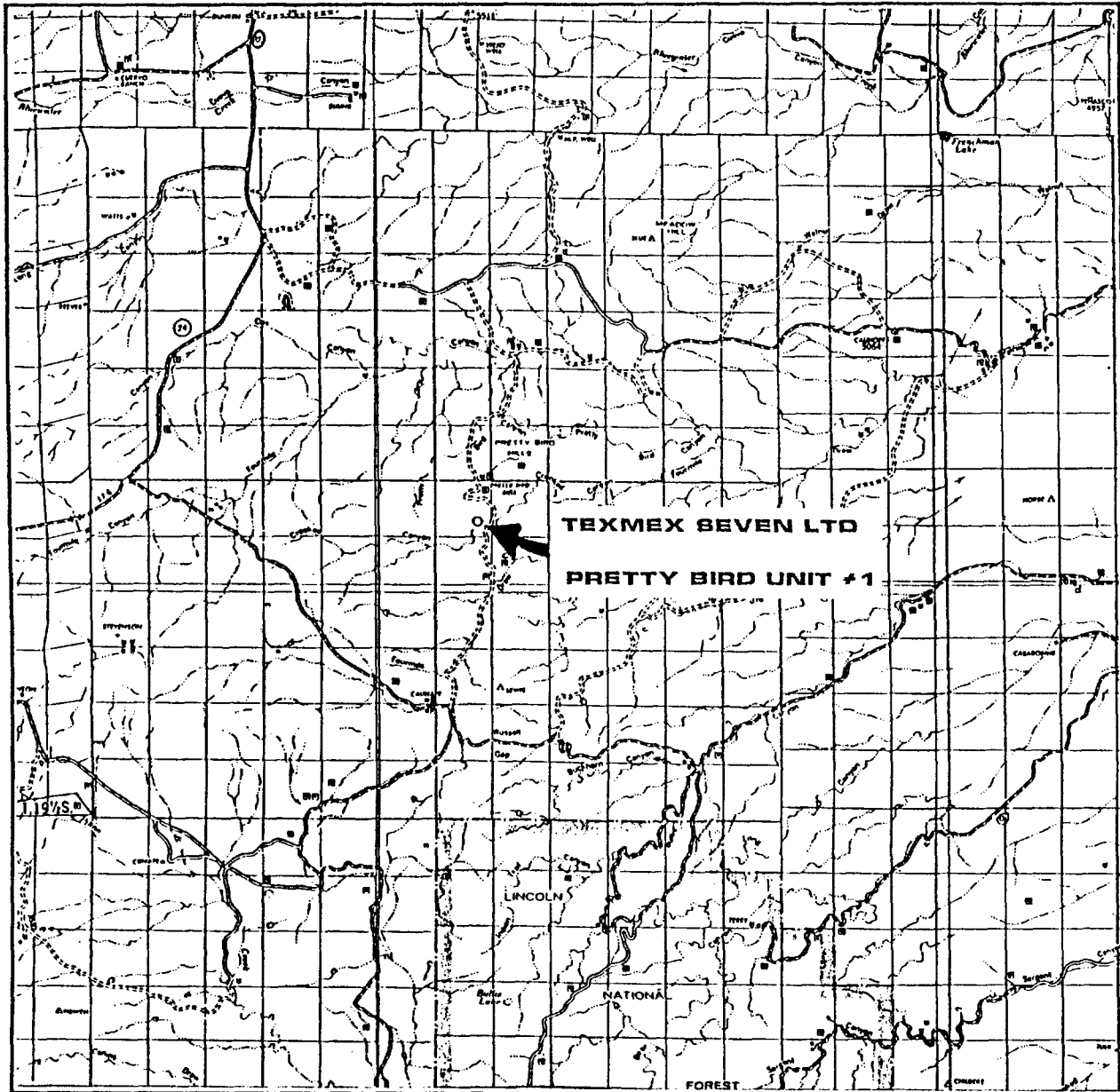
I hereby certify that I have inspected the proposed drillsite and access route; that I am familiar with the conditions which presently exist; that the statements made in the plan are, to the best of my knowledge true and correct; and, that the work associated with the operations proposed herein will be performed by TEXMEX SEVEN LTD and its contractors and subcontractors in conformity with this plan and the terms and conditions under which it is approved. This statement is subject to the provisions of 18 USC 1001 for the filing of a false statement.

 2-13-89 dated  
E. Richard Neff, General Partner  
and Agent for TEXMEX SEVEN LTD

### **Enclosed Exhibits**

- A - Vicinity map
- B - Topographic plat
- C - Surveyors plat
- D - Land plat
- E - Rig layout
- F - Will be submitted when drilling contractor is selected

# VICINITY MAP



SCALE: 1" = 3 MILES

SEC. 6 TWP. 19S RGE. 18E

SURVEY N.M.P.M.

COUNTY Chaves STATE NM

DESCRIPTION 660' FEL & 660' FSL

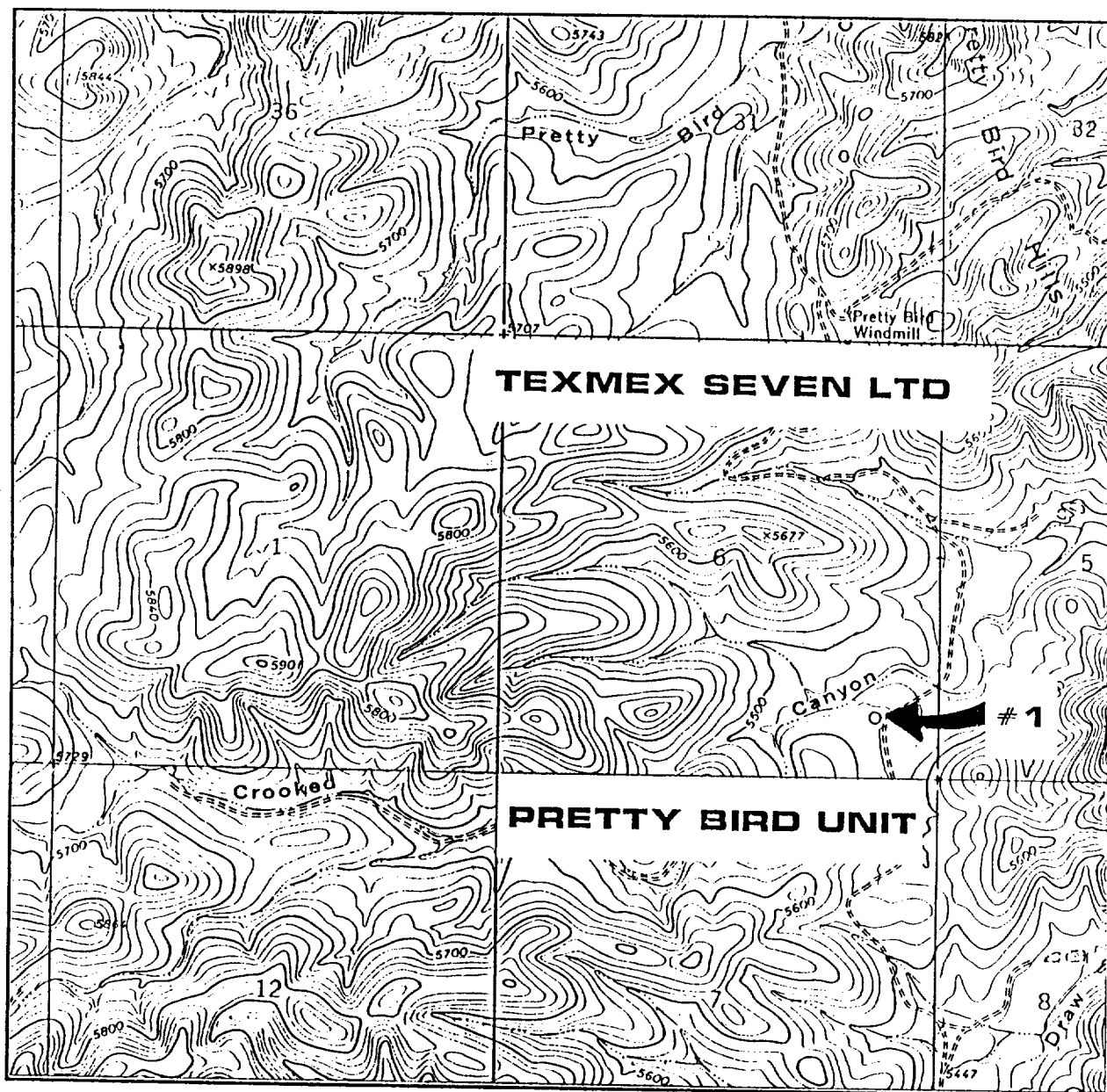
ELEVATION 5477.9

OPERATOR TEXMEX SEVEN LTD.

LEASE Pretty Bird Unit #1

EXHIBIT "A"  
VICINITY MAP 1" = 3miles  
ENCLOSURE TO APD  
TEXMEX SEVEN LTD  
PRETTY BIRD UNIT, WELL NO. 1  
CHAVES COUNTY, NM

# LOCATION VERIFICATION MAP



SCALE: 1" = 2000'

CONTOUR INTERVAL 20'

SEC. 6 TWP. 19S RGE. 18E

SURVEY N.M.P.M.

COUNTY Chaves STATE NM

DESCRIPTION 660' FEL & 660' FSL

ELEVATION 5477.9

OPERATOR TEXMEX SEVEN LTD.

LEASE Pretty Bird Unit #1

U.S.G.S. TOPOGRAPHIC MAP

Lewis Peak, NM

EXHIBIT "B"  
TOPOGRAPHIC PLAT 1" = 2,000'  
ENCLOSURE TO APD  
TEXMEX SEVEN LTD  
PRETTY BIRD UNIT, WELL NO. 1  
CHAVES COUNTY, NM



Submit to Appropriate  
District Office  
State Lease - 4 copies  
Fee Lease - 3 copies

State of New Mexico  
Energy, Minerals and Natural Resources Department

Form C-102  
Revised 1-1-89

OIL CONSERVATION DIVISION

P.O. Box 2088  
Santa Fe, New Mexico 87504-2088

DISTRICT I  
P.O. Box 1980, Hobbs, NM 88240

DISTRICT II  
P.O. Drawer DD, Artesia, NM 88210

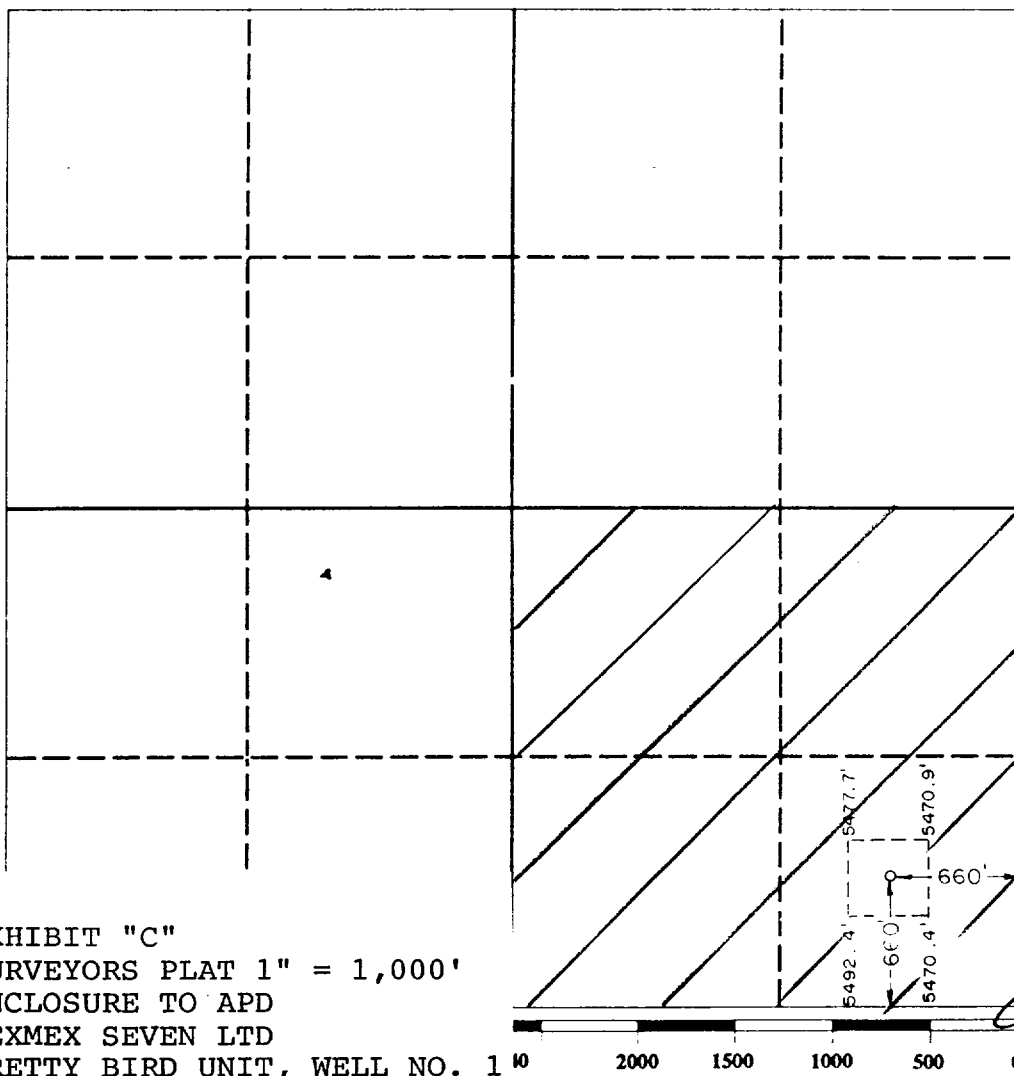
DISTRICT III  
1000 Rio Brazos Rd., Aztec, NM 87410

WELL LOCATION AND ACREAGE DEDICATION PLAT

All Distances must be from the outer boundaries of the section

Operator TEXMEX SEVEN LTD.			Lease PRETTY BIRD UNIT		Well No. 1
Unit Letter P	Section 6	Township 19 SOUTH	Range 18 EAST	County CHAVES	
Actual Footage Location of Well: 660 feet from the EAST line and 660 feet from the SOUTH line					
Ground level Elev. 5477.9	Producing Formation		Pool	Dedicated Acreage. 160 Acres	

- Outline the acreage dedicated to the subject well by colored pencil or hatchure marks on the plat below.
- If more than one lease is dedicated to the well, outline each and identify the ownership thereof (both as to working interest and royalty).
- If more than one lease of different ownership is dedicated to the well, have the interest of all owners been consolidated by communitization, unitization, force-pooling, etc.?  
☐ Yes ☐ No If answer is "yes" type of consolidation \_\_\_\_\_  
If answer is "no" list the owners and tract descriptions which have actually been consolidated. (Use reverse side of this form if necessary.)  
No allowable will be assigned to the well until all interests have been consolidated (by communitization, unitization, forced-pooling, or otherwise) or until a non-standard unit, eliminating such interest, has been approved by the Division.



OPERATOR CERTIFICATION

I hereby certify that the information contained herein is true and complete to the best of my knowledge and belief.

Signature  
*E. Richard Neff*

Printed Name  
E. Richard Neff

Position  
General Partner

Company  
TEXMEX SEVEN LTD

Date  
3-13-89

SURVEYOR CERTIFICATION

I hereby certify that the well location shown on this plat was plotted from field notes of actual surveys made by me or under my supervision, and that the same is true and correct to the best of my knowledge and belief.

Date Surveyed  
MARCH 8, 1989

Signature & Seal of Professional Surveyor

Certificate  
*[Signature]*  
NO. 676  
JAMES W. MESSER  
3239

EXHIBIT "C"  
SURVEYORS PLAT 1" = 1,000'  
ENCLOSURE TO APD  
TEXMEX SEVEN LTD  
PRETTY BIRD UNIT, WELL NO. 1  
CHAVES COUNTY, NM

☐ FEDERAL LAND  
☒ STATE LAND  
☐ 12 TRACT # PER EXHIBIT B

UNIT OUTLINE

The map displays a grid of sections in the T18S and T19S ranges, 17E and 18E quadrants. The sections are numbered 1 through 36. The map includes various land ownerships, including Tex Mex Seven, Moralo, McClellan Oil, B.J. Brown, and U.S. land. A 'Drill Site' is marked with an arrow pointing to section 4. The map includes section numbers, owner names, and acreage for each section.

Section	Owner	Acreage
1	Tex Mex Seven	36.4
2	State	
3	Tex Mex Seven	36.4
4	U.S.	
5	McClellan Oil	7172.4
6	Tex Mex Seven	36.4
7	Tex Mex Seven	36.4
8	Open	
9	Open	
10	Tex Mex Seven	36.4
11	State	
12	State	
13	Tex Mex Seven	36.4
14	U.S.	
15	State	
16	State	
17	Tex Mex Seven	36.4
18	Tex Mex Seven	36.4
19	Tex Mex Seven	36.4
20	Tex Mex Seven	36.4
21	State	
22	Tex Mex Seven	36.4
23	U.S.	
24	U.S.	
25	Tex Mex Seven	36.4
26	Tex Mex Seven	36.4
27	Tex Mex Seven	36.4
28	U.S.	
29	Tex Mex Seven	36.4
30	McClellan Oil	7172.4
31	U.S.	
32	State	
33	U.S.	
34	Tex Mex Seven	36.4
35	Tex Mex Seven	36.4
36	State	

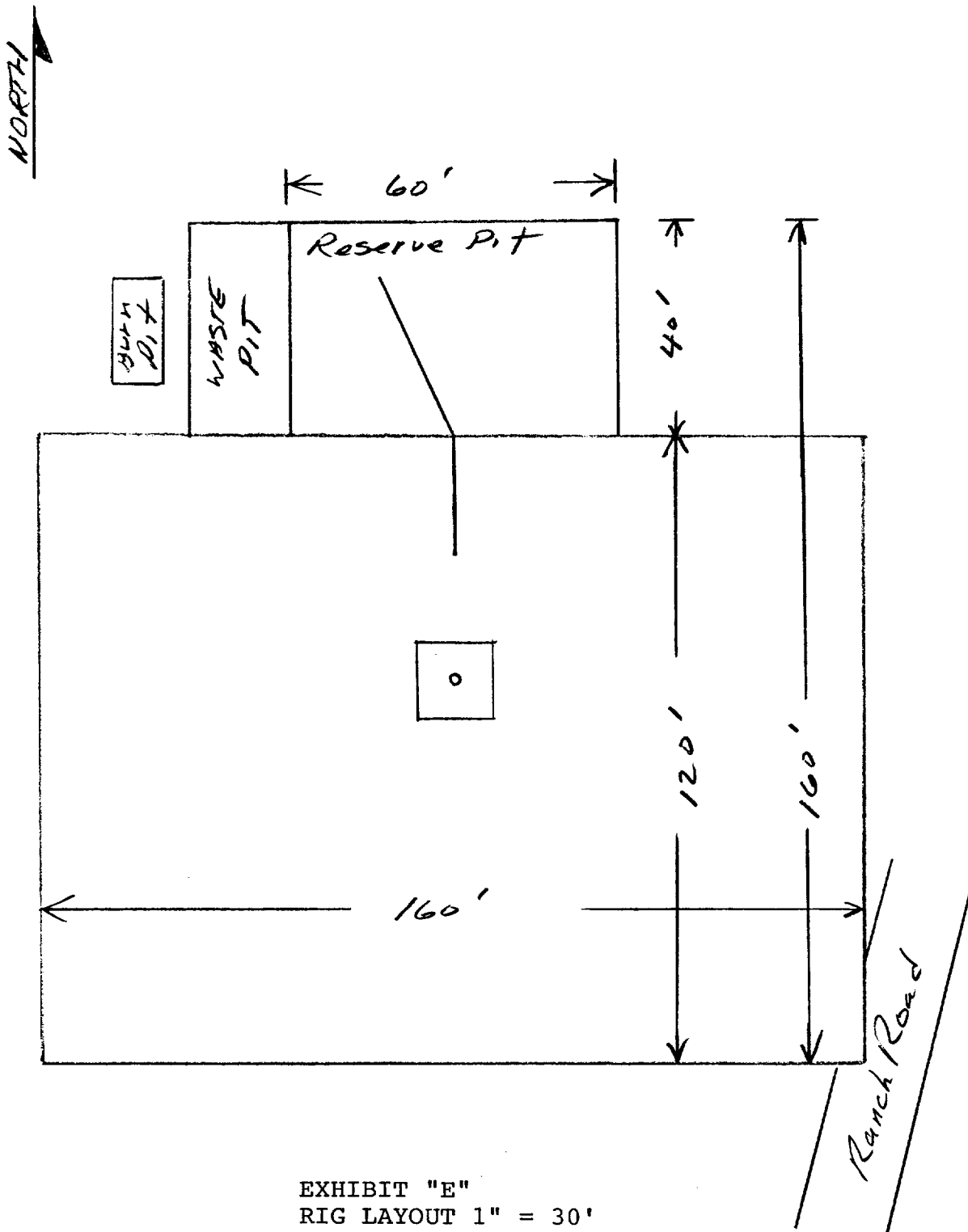


EXHIBIT "E"  
 RIG LAYOUT 1" = 30'  
 ENCLOSURE TO APD  
 TEXMEX SEVEN LTD  
 PRETTY BIRD UNIT, WELL NO. 1  
 CHAVES COUNTY, NM