



Midland Division
Exploration Production

AL CONSERVATION DIVISION

Conoco Inc.
10 Desta Drive, Suite 100W
Midland, TX 79705-4500
(915) 686-5400

March 15, 1994

Mr. William LeMay
State of New Mexico
Oil Conservation Division
P.O. Box 2088
Santa Fe, NM 87504-2088

10966

**Request for Non-standard Proration Unit With
Simultaneous Dedication for Four Wells, the
Meyer A-1 Well Nos. 11, 19, 20, and 21**

Dear Mr. LeMay:

EXHIBIT A shows all of the acreage (480 acres) of the Meyer A-1 Lease within sections 17 and 18 of T-20S, R-36E which is outlined by the dash-dotted line. The four active Eumont gas wells shown are Well Nos. 11, 19, 20, and 21. EXHIBITS B - E are acreage dedication plats for each of these four Eumont gas wells showing them simultaneously dedicated to a 440-acre NSPU which was established by Order R-6141. In section 18, Well No. 6 ceased production from the Eumont Gas Pool in 1985.

In Unit G (NW/4 NE/4) of section 18, Well No. 7 was initially completed as a Eumont oil well in 1972. Therefore, when the current non-standard proration unit was formed from all of the gas productive acreage in the Meyer A-1 Lease in both sections 17 and 18, the 40-acre tract under Well No. 7 was excluded and dedicated to oil production. Well No. 7 was plugged and abandoned in 1988 and this 40 acres no longer has any Eumont production dedicated to it. It seems to make more geographical and well density sense to transferred this undedicated acreage into the existing gas proration unit. It would also create a more logical acreage configuration to accomodate any future additional development that might take place in the east half of section 18.

It is Conoco's request that this 40 acres (NW/4 NE/4) of section 18 be added to the existing 440-acre NSPU to form a new NSPU of 480 acres which will include all of the 240 acres in section 17 and the 240 acres in section 18 within the Meyer A-1 Lease and that the four active Eumont gas wells, Nos. 11, 19, 20, and 21 be dedicated to it. EXHIBITS F - I are new C-102 plats for these four wells showing them simultaneously dedicated to the new proposed 480-acre NSPU. If there are any further questions, please call me at (915) 686-6548.

Very truly yours,

Jerry W. Hoover
Sr. Conservation Coordinator

cc: Hobbs District OCD Office

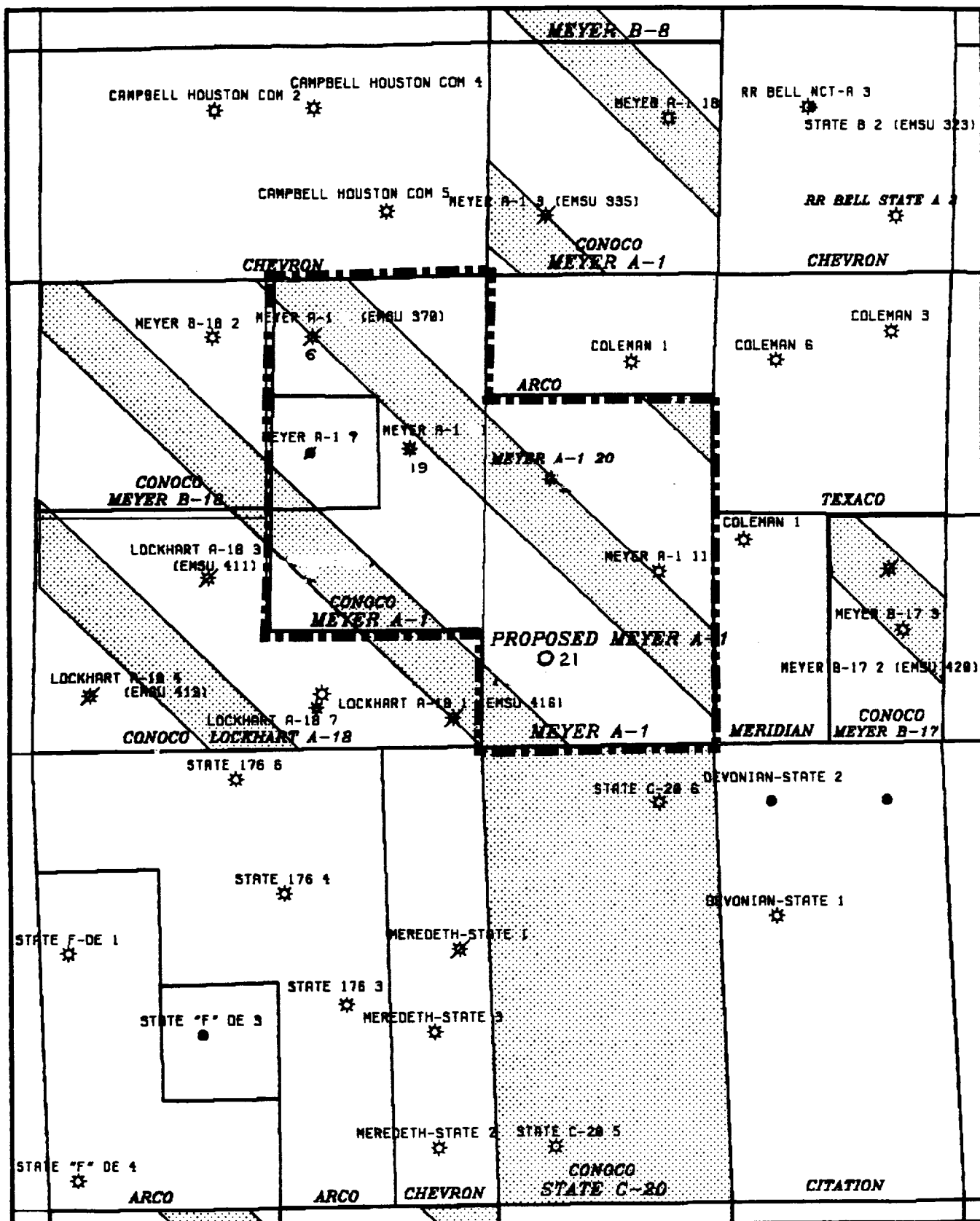


EXHIBIT A

OIL CONSERVATION DIVISION

P.O. Box 2088

Santa Fe, New Mexico 87504-2088

DISTRICT I

P.O. Box 1980, Hobbs, NM 88240

DISTRICT II

P.O. Drawer DD, Artesia, NM 88210

DISTRICT III

1000 Rio Brazos Rd., Aztec, NM 87410

WELL LOCATION AND ACREAGE DEDICATION PLAT

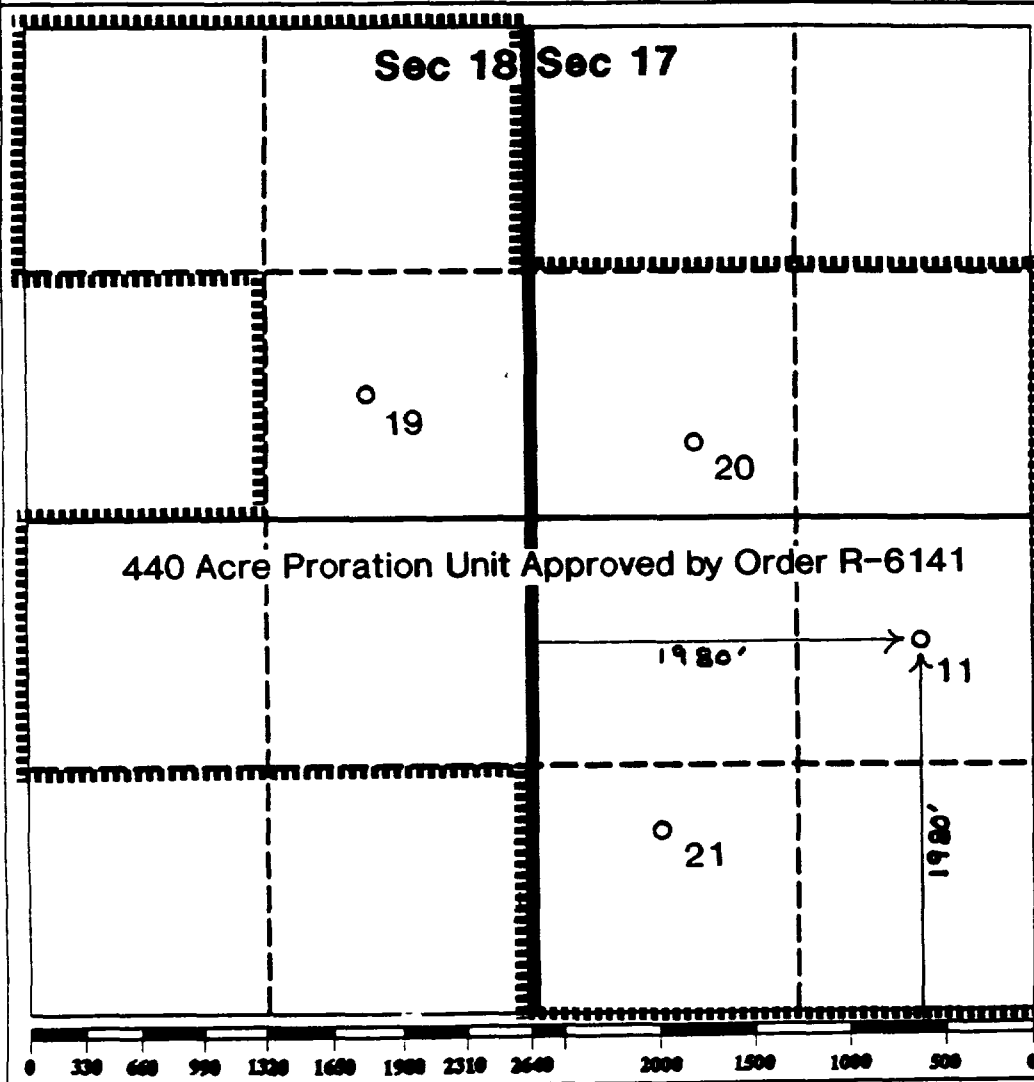
All Distances must be from the outer boundaries of the section

Operator Conoco, Inc.			Lease Meyer A-1		Well No. 11
Unit Letter K	Section 17	Township 21S	Range 36E	County Lea	

Actual Footage Location of Well:

1980	feet from the	South	line and	1980	feet from the	West	line
Ground level Elev. 3643'	Producing Formation Queen		Pool Eumont Gas		Dedicated Acreage: 440 Acres		

- Outline the acreage dedicated to the subject well by colored pencil or hatchure marks on the plat below.
- If more than one lease is dedicated to the well, outline each and identify the ownership thereof (both as to working interest and royalty).
- If more than one lease of different ownership is dedicated to the well, have the interest of all owners been consolidated by communitization, unitization, force-pooling, etc.?
☐ Yes ☐ No If answer is "yes" type of consolidation _____
If answer is "no" list the owners and tract descriptions which have actually been consolidated. (Use reverse side of this form if necessary). _____
No allowable will be assigned to the well until all interests have been consolidated (by communitization, unitization, force-pooling, or otherwise) or until a non-standard unit, eliminating such interest, has been approved by the Division.



OPERATOR CERTIFICATION

I hereby certify that the information contained herein is true and complete to the best of my knowledge and belief.

Signature
[Signature]
Printed Name
Jerry W. Hoover
Position
Sr. Conservation Coord.
Company
Conoco, Inc.
Date
3/15/94

SURVEYOR CERTIFICATION

I hereby certify that the well location shown on this plat was plotted from field notes of actual surveys made by me or under my supervision, and that the same is true and correct to the best of my knowledge and belief.

Date Surveyed
Signature & Seal of Professional Surveyor
Certificate No.

CURRENT NSP

EXHIBIT B

OIL CONSERVATION DIVISION

P.O. Box 2088

Santa Fe, New Mexico 87504-2088

DISTRICT I
P.O. Box 1980, Hobbs, NM 88240

DISTRICT II
P.O. Drawer DD, Artesia, NM 88210

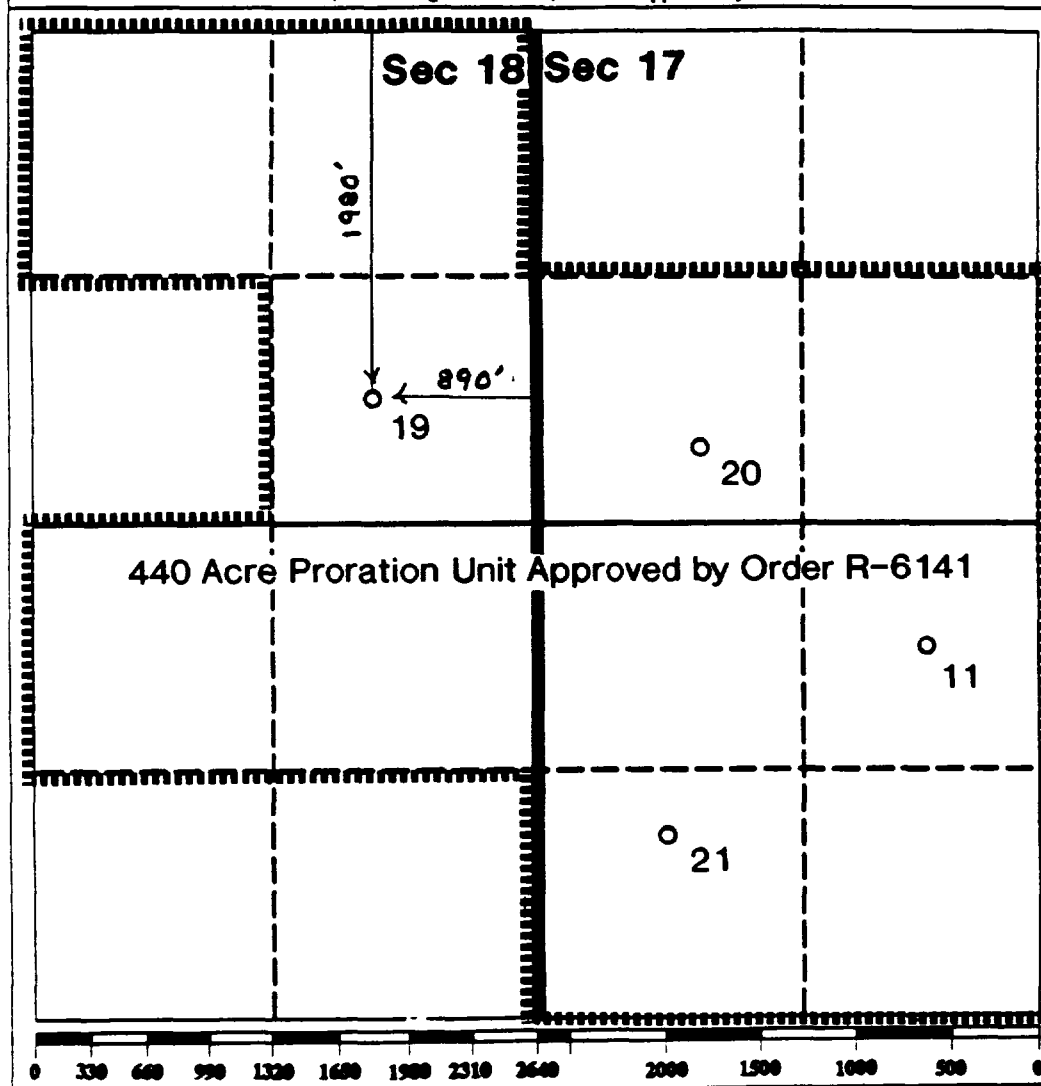
DISTRICT III
1000 Rio Brazos Rd., Aztec, NM 87410

WELL LOCATION AND ACREAGE DEDICATION PLAT

All Distances must be from the outer boundaries of the section

Operator Conoco, Inc.			Lease Meyer A-1		Well No. 19
Unit Letter H	Section 18	Township 21S	Range 36E	County Lea	
Actual Footage Location of Well: 1980 feet from the North line and 890 feet from the East line					
Ground level Elev. 3648.5'		Producing Formation Queen		Pool Eumont Gas	
				Dedicated Acreage: 440 Acres	

1. Outline the acreage dedicated to the subject well by colored pencil or hectare marks on the plat below.
2. If more than one lease is dedicated to the well, outline each and identify the ownership thereof (both as to working interest and royalty).
3. If more than one lease of different ownership is dedicated to the well, have the interest of all owners been consolidated by communitization, unitization, force-pooling, etc?
☐ Yes ☐ No If answer is "yes" type of consolidation _____
If answer is "no" list the owners and tract descriptions which have actually been consolidated. (Use reverse side of this form if necessary).
No allowable will be assigned to the well until all interests have been consolidated (by communitization, unitization, forced-pooling, or otherwise) or until a non-standard unit, eliminating each interest, has been approved by the Division.



OPERATOR CERTIFICATION

I hereby certify that the information contained herein is true and complete to the best of my knowledge and belief.

Signature
Jerry W. Hoover
Printed Name
Jerry W. Hoover
Position
Sr. Conservation Coord.
Company
Conoco, Inc.
Date
3/15/94

SURVEYOR CERTIFICATION

I hereby certify that the well location shown on this plat was plotted from field notes of actual surveys made by me or under my supervision, and that the same is true and correct to the best of my knowledge and belief.

Date Surveyed
Signature & Seal of Professional Surveyor
Certificate No.

CURRENT NSP

EXHIBIT C

OIL CONSERVATION DIVISION

P.O. Box 2088

Santa Fe, New Mexico 87504-2088

DISTRICT I
P.O. Box 1980, Hobbs, NM 88240

DISTRICT II
P.O. Drawer DD, Artesia, NM 88210

DISTRICT III
1000 Rio Brazos Rd., Aztec, NM 87410

WELL LOCATION AND ACREAGE DEDICATION PLAT

All Distances must be from the outer boundaries of the section

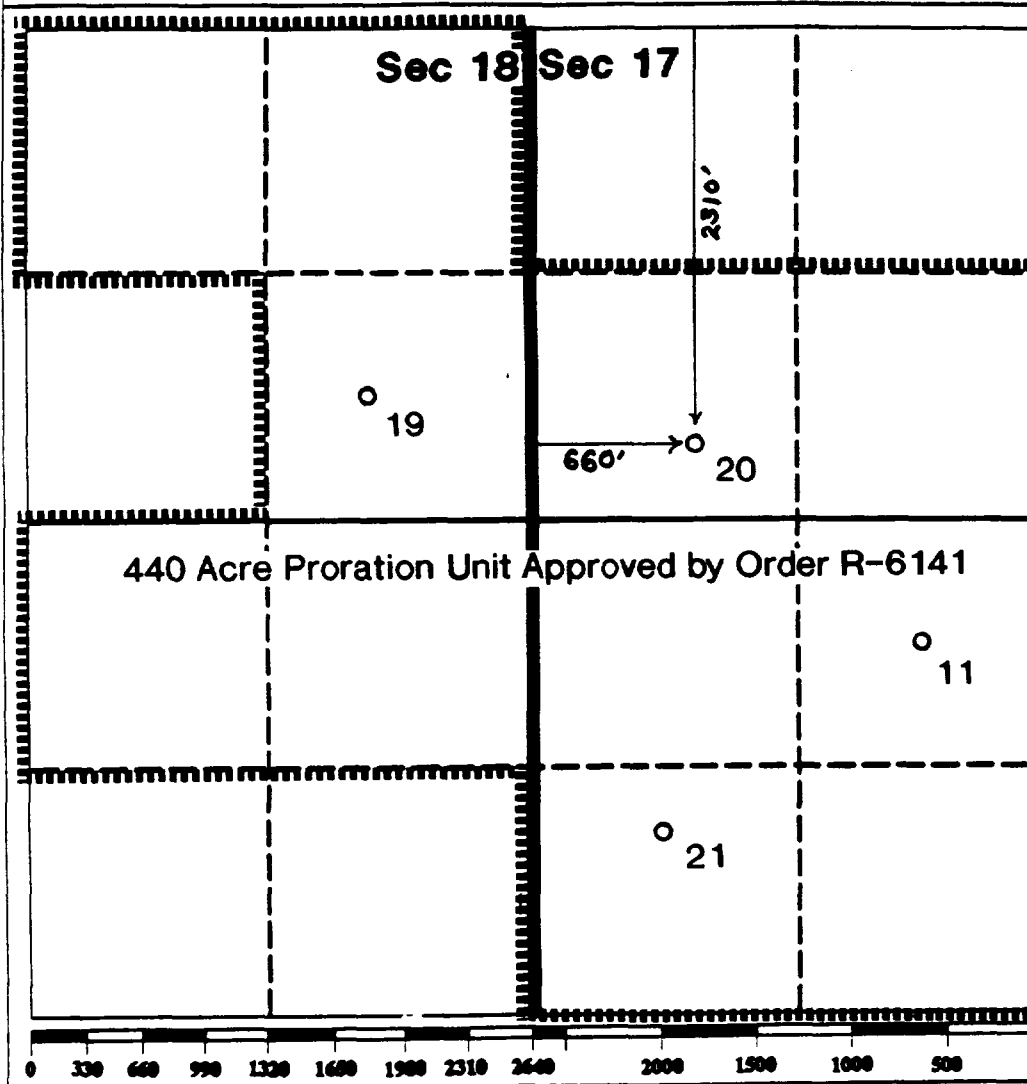
Operator Conoco, Inc.		Lease Meyer A-1		Well No. 20
Unit Letter E	Section 17	Township 21S	Range 36E	County Lea

NMPM

Actual Footage Location of Well:

2310	feet from the	North	line and	760	feet from the	West	line
Ground level Elev. 3649.8'	Producing Formation Queen		Pool Eumont Gas		Dedicated Acreage: 440 Acres		

1. Outline the acreage dedicated to the subject well by colored pencil or hectare marks on the plat below.
2. If more than one lease is dedicated to the well, outline each and identify the ownership thereof (both as to working interest and royalty).
3. If more than one lease of different ownership is dedicated to the well, have the interest of all owners been consolidated by communitization, unitization, force-pooling, etc.?
☐ Yes ☐ No If answer is "yes" type of consolidation _____
If answer is "no" list the owners and tract descriptions which have actually been consolidated. (Use reverse side of this form if necessary.)
No allowable will be assigned to the well until all interests have been consolidated (by communitization, unitization, forced-pooling, or otherwise) or until a non-standard unit, eliminating such interest, has been approved by the Division.



OPERATOR CERTIFICATION

I hereby certify that the information contained herein is true and complete to the best of my knowledge and belief.

Signature

Printed Name

Verry W. Hoover

Position

Sr. Conservation Coord.

Company

Conoco, Inc.

Date

3/15/94

SURVEYOR CERTIFICATION

I hereby certify that the well location shown on this plat was plotted from field notes of actual surveys made by me or under my supervision, and that the same is true and correct to the best of my knowledge and belief.

Date Surveyed

Signature & Seal of
Professional Surveyor

Certificate No.

CURRENT NSP

EXHIBIT D

OIL CONSERVATION DIVISION

P.O. Box 2088

Santa Fe, New Mexico 87504-2088

DISTRICT I

P.O. Box 1980, Hobbs, NM 88240

DISTRICT II

P.O. Drawer DD, Artesia, NM 88210

DISTRICT III

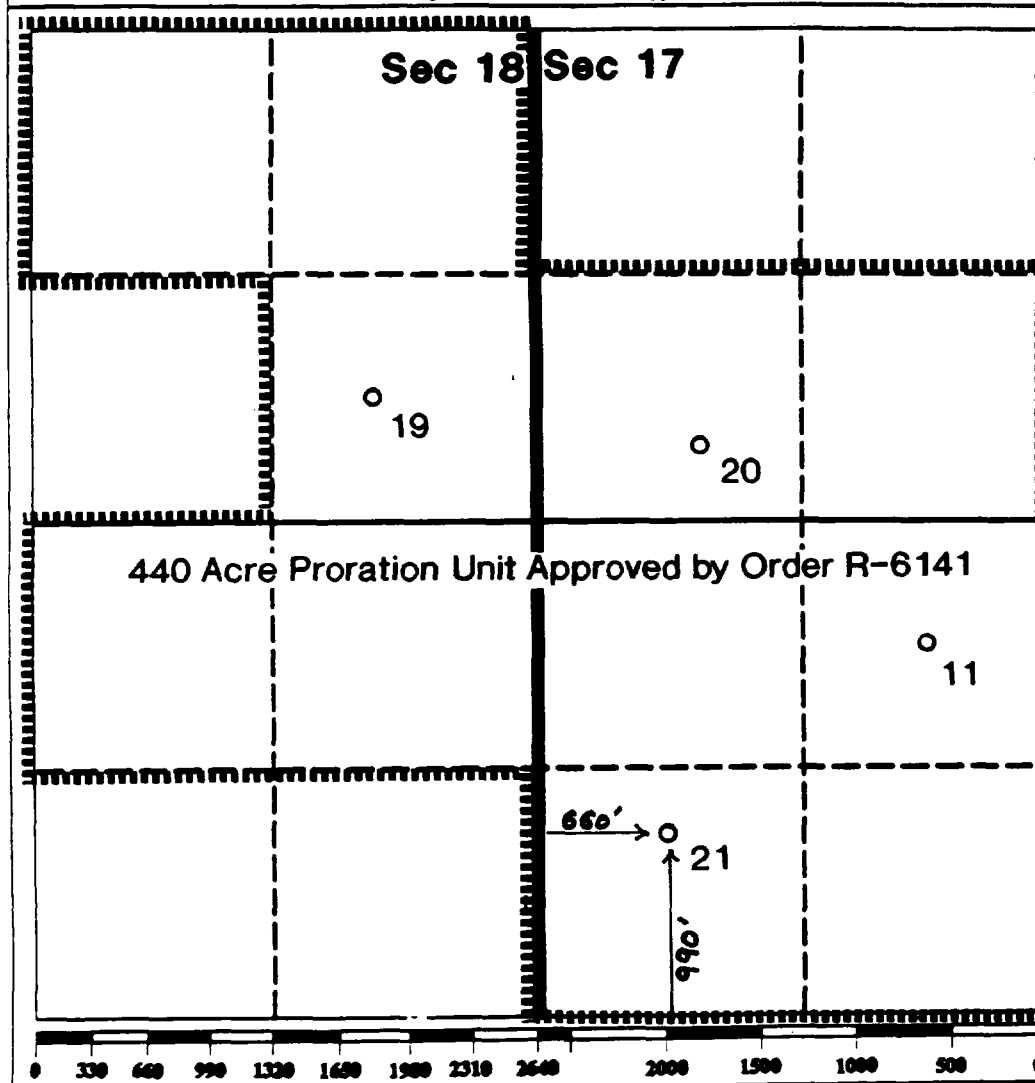
1000 Rio Brazos Rd., Aztec, NM 87410

WELL LOCATION AND ACREAGE DEDICATION PLAT

All Distances must be from the outer boundaries of the section

Operator Conoco, Inc.			Lease Meyer A-1		Well No. 21
Unit Letter M	Section 17	Township 21S	Range 36E	County NM/PM Lea	
Actual Footage Location of Well: 990 feet from the South line and 660 feet from the West line					
Ground level Elev. 3647'	Producing Formation Queen	Pool Eumont Gas	Dedicated Acreage: 440 Acres		

- Outline the acreage dedicated to the subject well by colored pencil or hectare marks on the plat below.
- If more than one lease is dedicated to the well, outline each and identify the ownership thereof (both as to working interest and royalty).
- If more than one lease of different ownership is dedicated to the well, have the interest of all owners been consolidated by communitization, unitization, force-pooling, etc.?
☐ Yes ☐ No If answer is "yes" type of consolidation _____
If answer is "no" list the owners and tract descriptions which have actually been consolidated. (Use reverse side of this form if necessary.)
No allowable will be assigned to the well until all interests have been consolidated (by communitization, unitization, forced-pooling, or otherwise) or until a non-standard unit, eliminating such interest, has been approved by the Division.



OPERATOR CERTIFICATION

I hereby certify that the information contained herein is true and complete to the best of my knowledge and belief.

Signature

Jerry W. Hoover

Printed Name

Jerry W. Hoover

Position

Sr. Conservation Coord.

Company

Conoco, Inc.

Date

3/15/94

SURVEYOR CERTIFICATION

I hereby certify that the well location shown on this plat was plotted from field notes of actual surveys made by me or under my supervision, and that the same is true and correct to the best of my knowledge and belief.

Date Surveyed

Signature & Seal of
Professional Surveyor

Certificate No.

CURRENT NSP

EXHIBIT E

OIL CONSERVATION DIVISION

P.O. Box 2088

Santa Fe, New Mexico 87504-2088

DISTRICT I
P.O. Box 1980, Hobbs, NM 88240

DISTRICT II
P.O. Drawer DD, Artesia, NM 88210

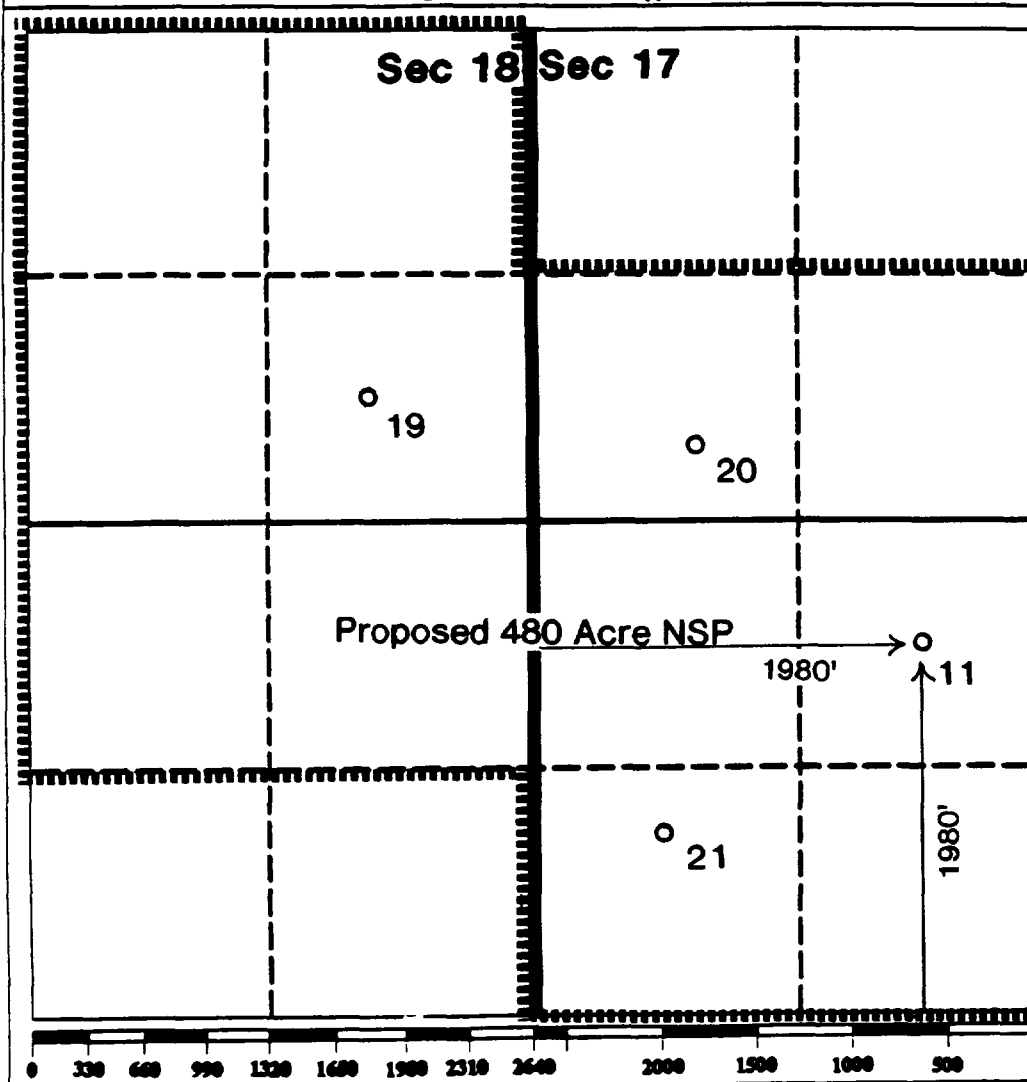
DISTRICT III
1000 Rio Brazos Rd., Aztec, NM 87410

WELL LOCATION AND ACREAGE DEDICATION PLAT

All Distances must be from the outer boundaries of the section

Operator Conoco, Inc.			Lease Meyer A-1		Well No. 11
Unit Letter K	Section 17	Township 21S	Range 36E	County NM/PM	Lea
Actual Footage Location of Well: 1980 feet from the South line and 1980 feet from the West line					
Ground level Elev. 3643'	Producing Formation Queen		Pool Eumont Gas		Dedicated Acreage: 480 Acres

1. Outline the acreage dedicated to the subject well by colored pencil or hatchure marks on the plat below.
2. If more than one lease is dedicated to the well, outline each and identify the ownership thereof (both as to working interest and royalty).
3. If more than one lease of different ownership is dedicated to the well, have the interest of all owners been consolidated by communitization, unitization, force-pooling, etc.?
☐ Yes ☐ No If answer is "yes" type of consolidation _____
If answer is "no" list the owners and tract descriptions which have actually been consolidated. (Use reverse side of this form if necessary.)
No allowable will be assigned to the well until all interests have been consolidated (by communitization, unitization, force-pooling, or otherwise) or until a non-standard unit, eliminating such interest, has been approved by the Division.



OPERATOR CERTIFICATION

I hereby certify that the information contained herein is true and complete to the best of my knowledge and belief.

Signature

Jerry W. Hoover

Printed Name

Jerry W. Hoover

Position

Sr. Conservation Coord.

Company

Conoco, Inc.

Date

3/15/94

SURVEYOR CERTIFICATION

I hereby certify that the well location shown on this plat was plotted from field notes of actual surveys made by me or under my supervision, and that the same is true and correct to the best of my knowledge and belief.

Date Surveyed

Signature & Seal of
Professional Surveyor

Certificate No.

PROPOSED NSP

EXHIBIT F

OIL CONSERVATION DIVISION

P.O. Box 2088

Santa Fe, New Mexico 87504-2088

DISTRICT I

P.O. Box 1980, Hobbs, NM 88240

DISTRICT II

P.O. Drawer DD, Artesia, NM 88210

DISTRICT III

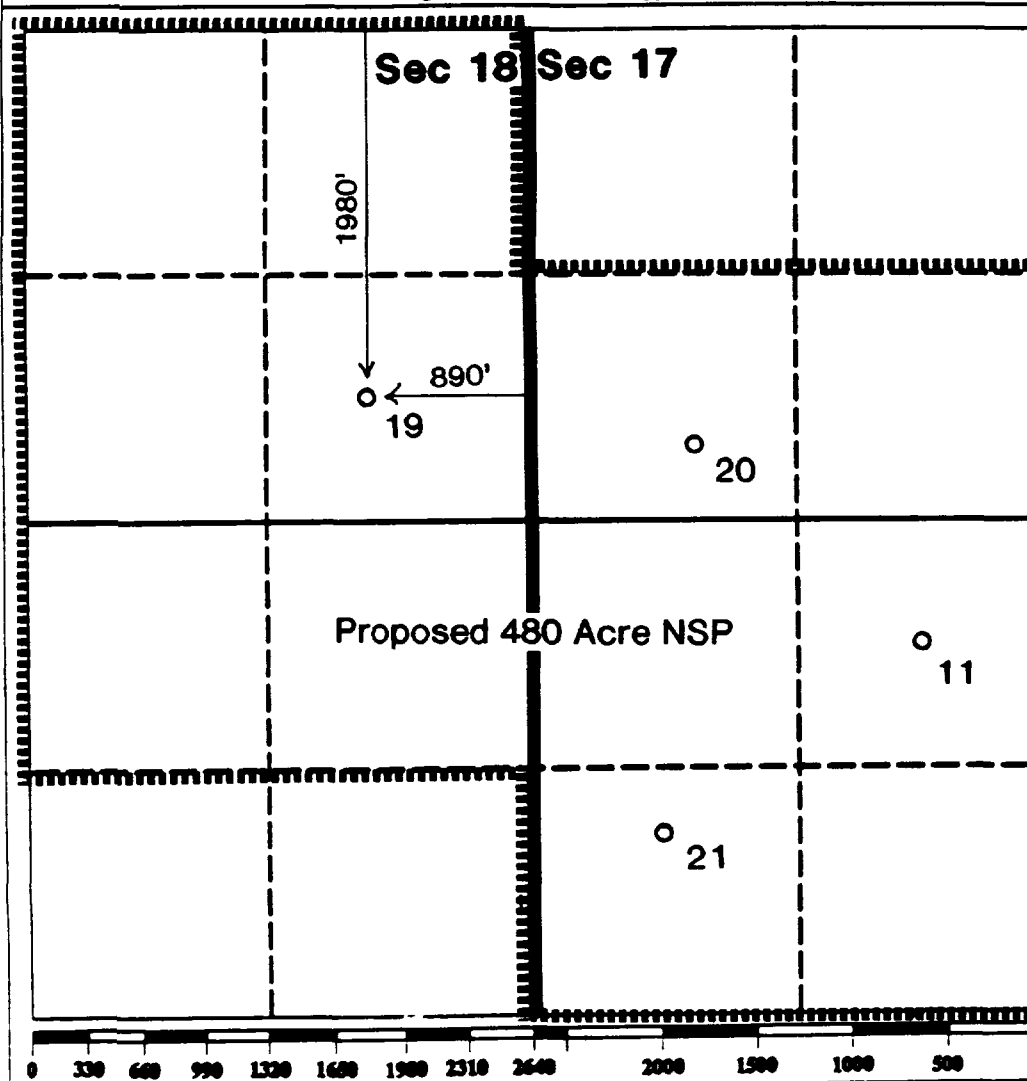
1000 Rio Brazos Rd., Aztec, NM 87410

WELL LOCATION AND ACREAGE DEDICATION PLAT

All Distances must be from the outer boundaries of the section

Operator Conoco, Inc.			Lease Meyer A-1		Well No. 19
Unit Letter H	Section 18	Township 21S	Range 36E	County Lea	
Actual Footage Location of Well: 1980 feet from the North line and 890 feet from the East line					
Ground level Elev. 3648.5'	Producing Formation Queen		Pool Eumont Gas		Dedicated Acreage: 480 Acres

- Outline the acreage dedicated to the subject well by colored pencil or hatchure marks on the plat below.
- If more than one lease is dedicated to the well, outline each and identify the ownership thereof (both as to working interest and royalty).
- If more than one lease of different ownership is dedicated to the well, have the interest of all owners been consolidated by communitization, unitization, force-pooling, etc.?
☐ Yes ☐ No If answer is "yes" type of consolidation _____
If answer is "no" list the owners and tract descriptions which have actually been consolidated. (Use reverse side of this form if necessary).
No allowable will be assigned to the well until all interests have been consolidated (by communitization, unitization, force-pooling, or otherwise) or until a non-standard unit, eliminating such interest, has been approved by the Division.



OPERATOR CERTIFICATION

I hereby certify that the information contained herein is true and complete to the best of my knowledge and belief.

Signature

Jerry W. Hoover

Printed Name

Jerry W. Hoover

Position

Sr. Conservation Coord.

Company

Conoco, Inc.

Date

3/15/94

SURVEYOR CERTIFICATION

I hereby certify that the well location shown on this plat was plotted from field notes of actual surveys made by me or under my supervision, and that the same is true and correct to the best of my knowledge and belief.

Date Surveyed

Signature & Seal of
Professional Surveyor

Certificate No.

PROPOSED NSP

EXHIBIT G

OIL CONSERVATION DIVISION

P.O. Box 2088

Santa Fe, New Mexico 87504-2088

DISTRICT I

P.O. Box 1980, Hobbs, NM 88240

DISTRICT II

P.O. Drawer DD, Artesia, NM 88210

DISTRICT III

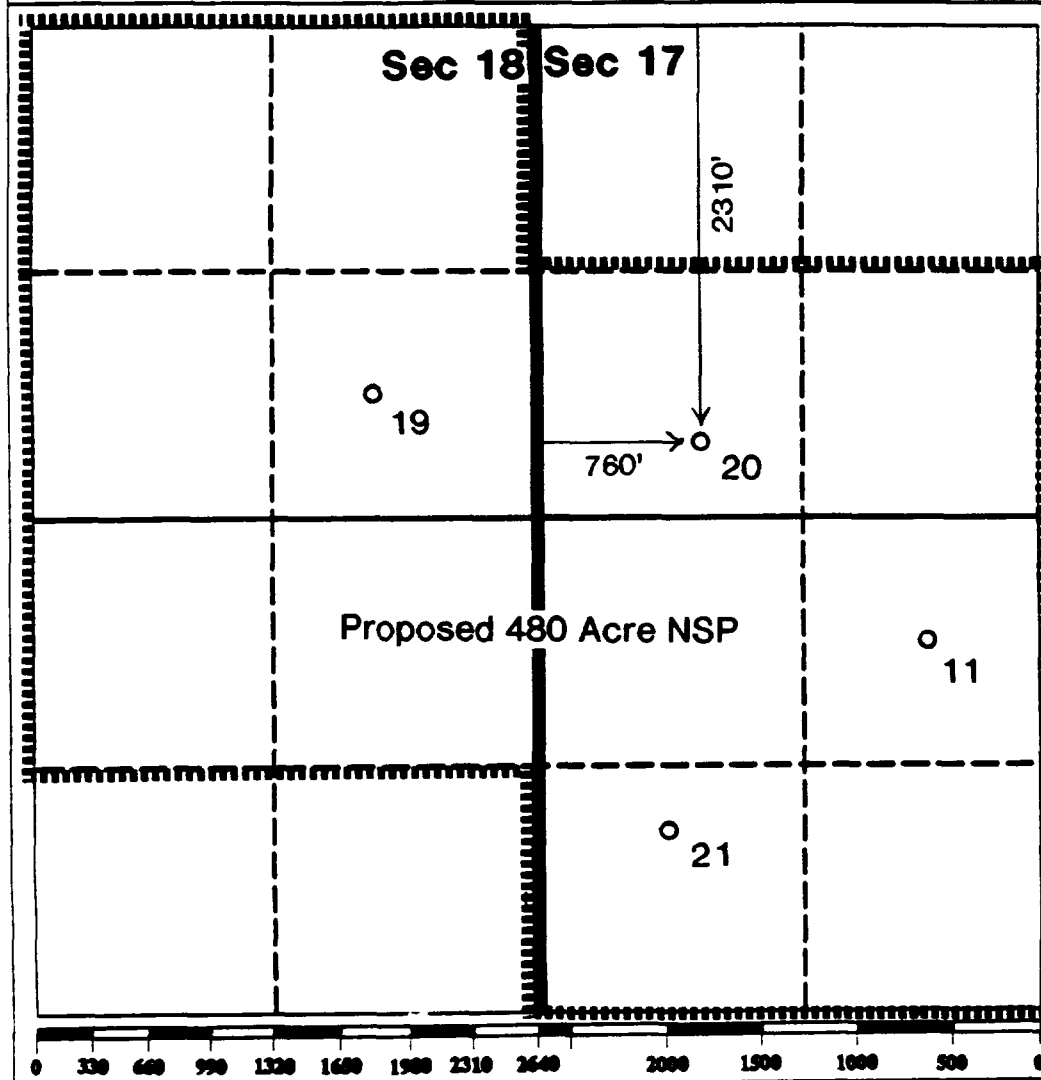
1000 Rio Brazos Rd., Aztec, NM 87410

WELL LOCATION AND ACREAGE DEDICATION PLAT

All Distances must be from the outer boundaries of the section

Operator Conoco, Inc.			Lease Meyer A-1		Well No. 20
Unit Letter E	Section 17	Township 21S	Range 36E	County Lea	
Actual Footage Location of Well: 2310 feet from the North line and 760 feet from the West line					
Ground level Elev. 3649.8'	Producing Formation Queen		Pool Eumont Gas		Dedicated Acreage: 480 Acres

- Outline the acreage dedicated to the subject well by colored pencil or hectare marks on the plat below.
- If more than one lease is dedicated to the well, outline each and identify the ownership thereof (both as to working interest and royalty).
- If more than one lease of different ownership is dedicated to the well, have the interest of all owners been consolidated by communitization, unitization, force-pooling, etc.?
☐ Yes ☐ No If answer is "yes" type of consolidation _____
If answer is "no" list the owners and tract descriptions which have actually been consolidated. (Use reverse side of this form if necessary.)
No allowable will be assigned to the well until all interests have been consolidated (by communitization, unitization, forced-pooling, or otherwise) or until a non-standard unit, eliminating such interest, has been approved by the Division.



OPERATOR CERTIFICATION

I hereby certify that the information contained herein is true and complete to the best of my knowledge and belief.

Signature

Printed Name

Jerry W. Hoover

Position

Sr. Conservation Coord.

Company

Conoco, Inc.

Date

3/15/94

SURVEYOR CERTIFICATION

I hereby certify that the well location shown on this plat was plotted from field notes of actual surveys made by me or under my supervision, and that the same is true and correct to the best of my knowledge and belief.

Date Surveyed

Signature & Seal of
Professional Surveyor

Certificate No.

PROPOSED NSP

EXHIBIT H

OIL CONSERVATION DIVISION

P.O. Box 2088

Santa Fe, New Mexico 87504-2088

DISTRICT I

P.O. Box 1980, Hobbs, NM 88240

DISTRICT II

P.O. Drawer DD, Artesia, NM 88210

DISTRICT III

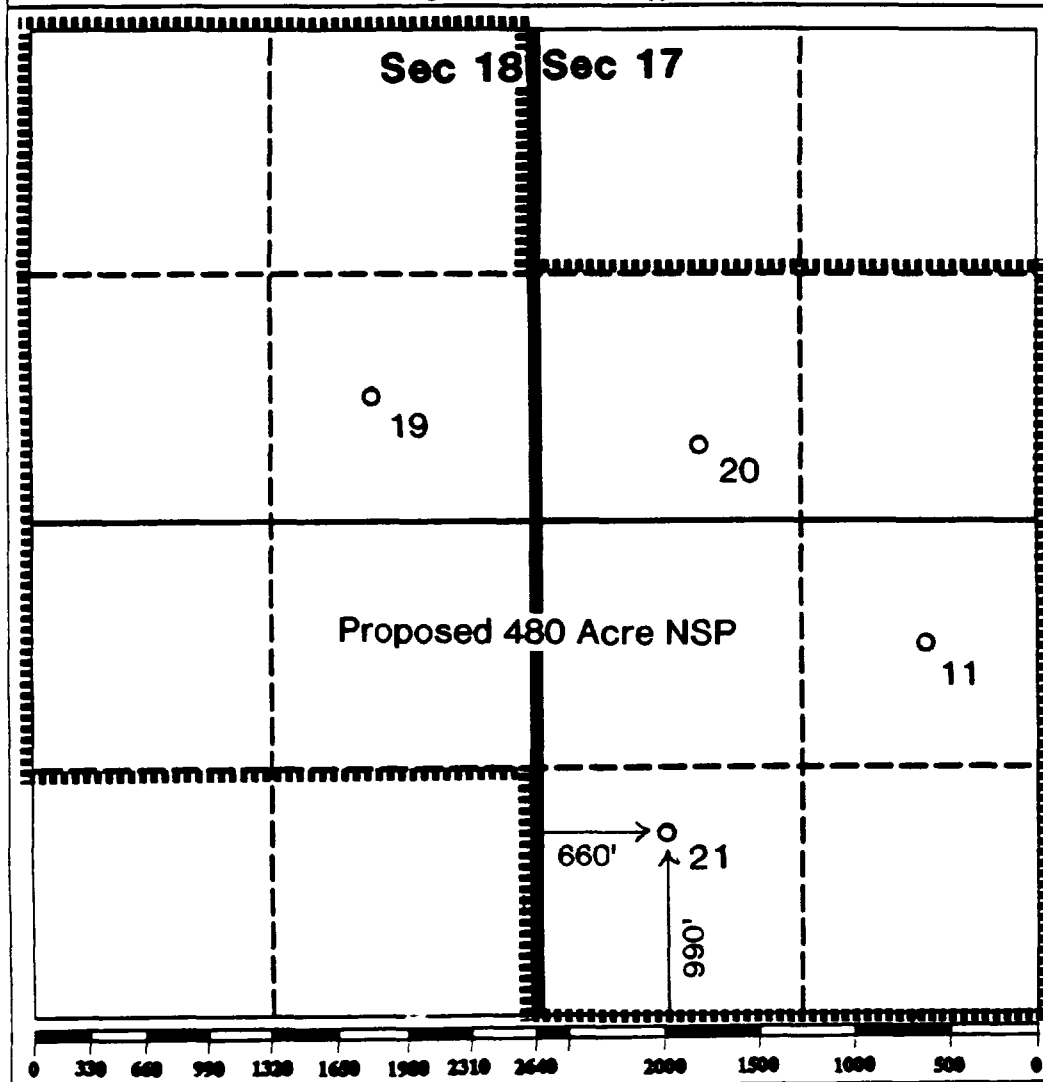
1000 Rio Brazos Rd., Aztec, NM 87410

WELL LOCATION AND ACREAGE DEDICATION PLAT

All Distances must be from the outer boundaries of the section

Operator Conoco, Inc.			Lease Meyer A-1		Well No. 21
Unit Letter M	Section 17	Township 21S	Range 36E	County Lea	
Actual Footage Location of Well: 990 feet from the South line and 660 feet from the West line					
Ground level Elev. 3647'	Producing Formation Queen	Pool Eumont Gas	Dedicated Acreage: 480 Acres		

1. Outline the acreage dedicated to the subject well by colored pencil or hachure marks on the plat below.
2. If more than one lease is dedicated to the well, outline each and identify the ownership thereof (both as to working interest and royalty).
3. If more than one lease of different ownership is dedicated to the well, have the interest of all owners been consolidated by communitization, unitization, force-pooling, etc?
☐ Yes ☐ No If answer is "yes" type of consolidation _____
If answer is "no" list the owners and tract descriptions which have actually been consolidated. (Use reverse side of this form if necessary.) _____
No allowable will be assigned to the well until all interests have been consolidated (by communitization, unitization, forced-pooling, or otherwise) or until a non-standard unit, eliminating such interest, has been approved by the Division.



OPERATOR CERTIFICATION

I hereby certify that the information contained herein is true and complete to the best of my knowledge and belief.

Signature: *Jerry W. Hoover*
Printed Name: Jerry W. Hoover
Position: Sr. Conservation Coord.
Company: Conoco, Inc.
Date: 3/15/94

SURVEYOR CERTIFICATION

I hereby certify that the well location shown on this plat was plotted from field notes of actual surveys made by me or under my supervision, and that the same is true and correct to the best of my knowledge and belief.

Date Surveyed: _____
Signature & Seal of Professional Surveyor: _____
Certificate No.: _____

PROPOSED NSP

EXHIBIT I

STATE OF NEW MEXICO
ENERGY AND MINERALS DEPARTMENT
OIL CONSERVATION DIVISION

IN THE MATTER OF THE HEARING
CALLED BY THE OIL CONSERVATION
DIVISION FOR THE PURPOSE OF
CONSIDERING:

CASE NO. 6673
Order No. R-6141

APPLICATION OF CONOCO INC. FOR A
NON-STANDARD PRORATION UNIT, UNORTHODOX
WELL LOCATIONS, AND SIMULTANEOUS
DEDICATION, LEA COUNTY, NEW MEXICO.

ORDER OF THE DIVISION:

BY THE DIVISION:

This cause came on for hearing at 9 a.m. on September 19, 1979, at Santa Fe, New Mexico, before Examiner Daniel S. Nutter.

NOW, on this 12th day of October, 1979, the Division Director, having considered the testimony, the record, and the recommendations of the Examiner, and being fully advised in the premises,

FINDS:

(1) That due public notice having been given as required by law, the Division has jurisdiction of this cause and the subject matter thereof.

(2) That the applicant, Conoco Inc., seeks approval of a 440-acre non-standard gas proration unit comprising the SW/4 and S/2 NW/4 of Section 17 and the N/2 NE/4, SE/4 NE/4, and N/2 SE/4 of Section 18, all in Township 21 South, Range 36 East, NMPM, Eumont Gas Pool, Lea County, New Mexico, to be simultaneously dedicated to the following wells at unorthodox locations: Meyer A-1 Wells Nos. 11 in Unit K of Section 17 and 6 and 14 in Units B and J of Section 18.

(3) That the entire non-standard proration unit may reasonably be presumed productive of gas from the Eumont Gas Pool and that the entire non-standard gas proration unit can be efficiently and economically drained and developed by the aforesaid wells.

(4) That approval of the subject application will afford the applicant the opportunity to produce his just and equitable

share of the gas in the Eumont Gas Pool, will prevent the economic loss caused by the drilling of unnecessary wells, avoid the augmentation of risk arising from the drilling of an excessive number of wells, and will otherwise prevent waste and protect correlative rights.

(5) That Division Order No. R-4481, which approved a 200-acre non-standard unit in the aforesaid Section 18, and Division Order NSP-281, which approved a 240-acre non-standard unit in the aforesaid Section 17, should be rescinded.

IT IS THEREFORE ORDERED:

(1) That a 440-acre non-standard gas proration unit in the Eumont Gas Pool comprising the SW/4 and S/2 NW/4 of Section 17 and the N/2 NE/4 SE/4 NE/4, and N/2 SE/4 of Section 18, all in Township 21 South, Range 36 East, NMPM, Lea County, New Mexico, is hereby established and dedicated to the following Conoco Inc. wells at unorthodox locations: Meyer A-1 Wells Nos. 11 in Unit K of Section 17 and 6 and 14 in Units B and J of said Section 18.

(2) That Division Orders Nos. R-4481 and NSP-281 are hereby rescinded.

(3) That jurisdiction of this cause is retained for the entry of such further orders as the Division may deem necessary.

DONE at Santa Fe, New Mexico, on the day and year hereinabove designated.

STATE OF NEW MEXICO
OIL CONSERVATION DIVISION


JOE D. RAMEY
Director

S E A L

fd/

STATE OF NEW MEXICO
ENERGY, MINERALS AND NATURAL RESOURCES DEPARTMENT
OIL CONSERVATION DIVISION

IN THE MATTER OF THE HEARING
CALLED BY THE OIL CONSERVATION
DIVISION FOR THE PURPOSE OF
CONSIDERING:

CASE NO. 9263
Order No. R-6141-A

APPLICATION OF CONOCO INC. TO
AMEND DIVISION ORDER NO. R-6141,
LEA COUNTY, NEW MEXICO.

ORDER OF THE DIVISION

BY THE DIVISION:

This cause came on for hearing at 8:15 a.m. on November 18, 1987, at Santa Fe, New Mexico, before Examiner David R. Catanach.

NOW, on this 3rd day of December, 1987, the Division Director, having considered the testimony, the record, and the recommendations of the Examiner, and being fully advised in the premises,

FINDS THAT:

(1) Due public notice having been given as required by law, the Division has jurisdiction of this cause and the subject matter thereof.

(2) By Order No. R-6141 entered in Case No. 6673 on October 12, 1979, the Division approved the application of Conoco Inc. for a non-standard gas proration unit consisting of 440 acres comprising the SW/4 and S/2 NW/4 of Section 17 and the N/2 NE/4, SE/4 NE/4, and the N/2 SE/4 of Section 18, Township 21 South, Range 36 East, NMPM, Eumont Gas Pool, Lea County, New Mexico, to be simultaneously dedicated to the Meyer A-1 Well No. 11 located at an unorthodox location in Unit K of said Section 17 and to the Meyer A-1 Wells Nos. 6 and 14 located at unorthodox locations, respectively, in Units B and J of said Section 18.

(3) The applicant, Conoco Inc., seeks to amend said Order No. R-6141 to allow the drilling of the Meyer A-1 Well No. 19 at an unorthodox location 1980 feet from the North line and 890 feet from the East line (Unit H) of said Section 18, which is proposed to be completed in the Eumont Gas Pool.

(4) The applicant further seeks to amend said Order No. R-6141 for authorization to simultaneously dedicate said 440-acre non-standard proration unit to the proposed Meyer A-1 Well No. 19 and to the existing Meyer A-1 Well No. 11.

(5) The applicant testified that the Meyer A-1 Well No. 19 will be drilled as a replacement well for the Meyer A-1 Wells Nos. 6 and 14, which will be recompleted to the Eunice Monument Grayburg-San Andres Pool and will become unit wells within Chevron's Eunice Monument South Unit Waterflood Project.

(6) The applicant further testified that the drilling of the Meyer A-1 Well No. 19 at the proposed unorthodox location is necessary in order to recover remaining gas reserves underlying the non-standard proration unit and that the entire non-standard gas proration unit can be efficiently and economically drained and developed by the Meyer A-1 Wells Nos. 11 and 19.

(7) No offset operator objected to the proposed unorthodox location.

(8) Approval of the subject application will afford the applicant the opportunity to produce his just and equitable share of the gas in the Eumont Gas Pool, will prevent the economic loss caused by the drilling of unnecessary wells, avoid the augmentation of risk arising from the drilling of an excessive number of wells, and will otherwise prevent waste and protect correlative rights.

IT IS THEREFORE ORDERED THAT:

(1) Ordering Paragraph No. (1) of Division Order No. R-6141 is hereby amended to read in its entirety as follows:

"(1) A 440-acre non-standard gas proration unit in the Eumont Gas Pool comprising the SW/4 and S/2 NW/4 of Section 17 and the N/2 NE/4, SE/4 NE/4, and N/2 SE/4 of Section 18, all in Township 21 South, Range 36 East, NMPM, Lea County, New Mexico, is hereby established and dedicated to the following described Conoco Inc. wells located at unorthodox locations, also hereby approved; Meyer A-1 Well No. 11 located 1980 feet from the South and West lines (Unit K) of said Section 17 and the Meyer A-1 Well No. 19 located 1980 feet from the North line and 890 feet from the East line (Unit H) of said Section 18."

-3-

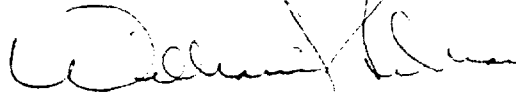
Case No. 9263

Order No. R-6141-A

(2) Jurisdiction of this cause is retained for the entry of such further orders as the Division may deem necessary.

DONE at Santa Fe, New Mexico, on the day and year hereinabove designated.

STATE OF NEW MEXICO
OIL CONSERVATION DIVISION



WILLIAM J. LEMAY
Director

S E A L

fd/



STATE OF NEW MEXICO
ENERGY, MINERALS AND NATURAL RESOURCES DEPARTMENT

OIL CONSERVATION DIVISION



BRUCE KING
GOVERNOR

ANITA LOCKWOOD
CABINET SECRETARY

POST OFFICE BOX 2088
STATE LAND OFFICE BUILDING
SANTA FE, NEW MEXICO 87504
(505) 827-5800

March 24, 1994

Conoco, Inc.
10 Desta Drive, Suite 100W
Midland, TX 79705-4500

Attention: Jerry Hoover

RE: Request to amend Division Order No. R-6141, as amended, to form a non-standard 480-acre Eumont gas spacing and proration unit in portions of Sections 17 and 18, Township 21 South, Range 36 East, NMPM, Lea County, New Mexico.

Dear Mr. Hoover:

I have reviewed the subject application, which was received on March 17, 1994. As you are probably aware, there have been quite a few administrative orders issued concerning acreage dedication and re-dedication in the Eumont Gas Pool over the years.

During this time the administrative procedures for authorizing non-standard units in the Eumont Gas Pool have been established; Rule 5(c)3 of Order No. R-1670, as amended, did not allowed for the formation of non-standard gas units in pools with 640 acre spacing to cross governmental section lines without notice and hearing; Order No. R-8170 echoed this practice as Rule 2(a)4(2) took effect. However, this portion of Order R-8170 has been omitted by R-8170-H, technically this procedure now falls under the Division's General Rules and Regulations [Rule 104.D(2)], which has no procedures for pools spaced on 640 acres. This omission I'm sure was merely an oversight.

Your particular application in effect is for a non-standard gas spacing and proration unit that crosses a section line and can also be classified as an amendment to an "R" Order, both reasons that alone do not qualify this application to be approved administratively.

This application will therefore require a hearing before such an order can be issued. I will set this matter on the next available docket scheduled for April 28, 1994.

Should you have any questions or comments concerning this matter, please contact me.

Submit 5 Copies
Appropriate District Office
DISTRICT I
P.O. Box 1980, Hobbs, NM 88240

DISTRICT II
P.O. Drawer DD, Aztec, NM 88210

DISTRICT III
1000 Rio Branc Rd., Aztec, NM 87410

State of New Mexico
Energy, Minerals and Natural Resources Department

OIL CONSERVATION DIVISION

P.O. Box 2088
Santa Fe, New Mexico 87504-2088

Form C-104
Revised 1-1-89
See Instructions
at Bottom of Page

RECEIVED
OIL CONSERVATION DIVISION

SEP 12 1990 AM 4 28

REQUEST FOR ALLOWABLE AND AUTHORIZATION
TO TRANSPORT OIL AND NATURAL GAS

Operator <u>CONOCO INC.</u>		Well API No. <u>300253009100</u>
Address <u>PO Box 1959 MIDLAND, TX 79705</u>		
Reason(s) for Filing (Check proper box) New Well <input type="checkbox"/> Change in Transporter of: <input type="checkbox"/> Other (Please explain) <input type="checkbox"/> Recompletion <input type="checkbox"/> Oil <input type="checkbox"/> Dry Gas <input checked="" type="checkbox"/> Change in Operator <input type="checkbox"/> Casinghead Gas <input type="checkbox"/> Condensate <input type="checkbox"/>		
If change of operator give name and address of previous operator _____		

II. DESCRIPTION OF WELL AND LEASE

Lease Name <u>MEYER A-1</u>	Well No. <u>19</u>	Pool Name, including Formation <u>EUMONT QUEEN GAS</u>	Kind of Lease State, Federal or Fee	Lease No. <u>071031740 A</u>
Location Unit Letter <u>H</u> : <u>1980</u> Feet From The <u>NORTH</u> Line and <u>890</u> Feet From The <u>EAST</u> Line Section <u>18</u> Township <u>21S</u> Range <u>36E</u> NMPM, <u>LEA</u> County				

III. DESIGNATION OF TRANSPORTER OF OIL AND NATURAL GAS

Name of Authorized Transporter of Oil or Condensate <u>CONOCO INC.</u>	Address (Give address to which approved copy of this form is to be sent) _____					
Name of Authorized Transporter of Casinghead Gas <u>PHILIPS 66 NATURAL GAS COMPANY</u>	Address (Give address to which approved copy of this form is to be sent) <u>4001 LIVE OAK DR. ODESSA, TX 79762</u>					
If well produces oil or liquids, give location of tanks.	Unit	Sec.	Twp.	Rge.	Is gas actually connected?	When?
					<u>YES</u>	<u>8-7-90</u>

If this production is commingled with that from any other lease or pool, give commingling order number: _____

IV. COMPLETION DATA

Designate Type of Completion - (X)	Oil Well	Gas Well	New Well	Workover	Deepen	Plug Back	Same Res'v	Diff Res'v
Date Spudded	Date Compl. Ready to Prod.		Total Depth			P.B.T.D.		
Elevations (DF, RKB, R., GR, etc.)	Name of Producing Formation		Top Oil/Gas Pay			Tubing Depth		
Performances						Depth Casing Shoe		
TUBING, CASING AND CEMENTING RECORD								
HOLE SIZE	CASING & TUBING SIZE		DEPTH SET			SACKS CEMENT		

V. TEST DATA AND REQUEST FOR ALLOWABLE

OIL WELL (Test must be after recovery of total volume of lead oil and must be equal to or exceed top allowable for this depth or be for full 24 hours.)

Date First New Oil Run To Tank	Date of Test	Producing Method (Flow, pump, gas lift, etc.)	
Length of Test	Tubing Pressure	Casing Pressure	Choke Size
Actual Prod. During Test	Oil - Bbls.	Water - Bbls.	Gas - MCF

GAS WELL

Actual Prod. Test - MCF/D	Length of Test	Bbls. Condensate/MMCF	Gravity of Condensate
Testing Method (pilot, back pr.)	Tubing Pressure (Shut-in)	Casing Pressure (Shut-in)	Choke Size

VI. OPERATOR CERTIFICATE OF COMPLIANCE

I hereby certify that the rules and regulations of the Oil Conservation Division have been complied with and that the information given above is true and complete to the best of my knowledge and belief.

Signature H. L. DEATHE ADMINISTRATIVE SUPERVISOR
Printed Name H. L. DEATHE Title (915) 686-5400
Date SEP 6 1990 Telephone No. _____

OIL CONSERVATION DIVISION

Date Approved SEP 12 1990
Orig. Signed by Paul Kautz
By Geologist
Title _____

INSTRUCTIONS: This form is to be filed in compliance with Rule 1104

- 1) Request for allowable for newly drilled or deepened well must be accompanied by tabulation of deviation tests taken in accordance with Rule 111.
- 2) All sections of this form must be filled out for allowable on new and recompleted wells.
- 3) Fill out only Sections I, II, III, and VI for changes of operator, well name or number, transporter, or other such changes.
- 4) Separate Form C-104 must be filed for each pool in multiply completed wells.

Submit 5 Copies
Appropriate District Office
DISTRICT I
P.O. Box 1980, Hobbs, NM 88240

DISTRICT II
P.O. Drawer DD, Artesia, NM 88210

DISTRICT III
1000 Rio Brazos Rd., Aztec, NM 87410

State of New Mexico
Energy, Minerals and Natural Resources Department

OIL CONSERVATION DIVISION
P.O. Box 2088
Santa Fe, New Mexico 87504-2088

Form C-104
Revised 1-1-89
See Instructions
Page 1 of 1

RECEIVED

REQUEST FOR ALLOWABLE AND AUTHORIZATION
TO TRANSPORT OIL AND NATURAL GAS

92 NO 130 AM 4 28

Operator Conoco Inc.		Well API No. 300250469000
Address P.O. Box 1259 Midland, TX 79705		
Reason(s) for Filing (Check proper box) <input type="checkbox"/> New Well <input type="checkbox"/> Change in Transporter of: <input type="checkbox"/> Recompletion <input type="checkbox"/> Oil <input type="checkbox"/> Dry Gas <input checked="" type="checkbox"/> Gas <input type="checkbox"/> Change in Operator <input type="checkbox"/> Casinghead Gas <input type="checkbox"/> Condensate <input type="checkbox"/> Other (Please explain)		
If change of operator give name and address of previous operator		

II. DESCRIPTION OF WELL AND LEASE

Lease Name Meyer A-1	Well No. 11	Pool Name, including Formation Eumont Queen Gas	Kind of Lease State, Federal or Fee	Lease No. 071031740A
Location Unit Letter K : 1980' Feet From The South Line and 1980' Feet From The West Line Section 17 Township 21S Range 36E , NMPM Lea County				

III. DESIGNATION OF TRANSPORTER OF OIL AND NATURAL GAS

Name of Authorized Transporter of Oil <input type="checkbox"/> or Condensate <input type="checkbox"/>	Address (Give address to which approved copy of this form is to be sent)	
Name of Authorized Transporter of Casinghead Gas <input type="checkbox"/> or Dry Gas <input checked="" type="checkbox"/>	Address (Give address to which approved copy of this form is to be sent)	
Phillips 66 Natural Gas Company	Odessa, TX 79762	
If well produces oil or liquids, give location of tanks.	Unit	Sec. Twp. Rge.
Is gas actually connected?	When?	
Yes	8-21-90	

If this production is commingled with that from any other lease or pool, give commingling order number:

IV. COMPLETION DATA

Designate Type of Completion - (X)	Oil Well	Gas Well	New Well	Workover	Deepen	Plug Back	Same Res'v	Diff Res'v
Date Spudded	Date Compl. Ready to Prod.		Total Depth		P.B.T.D.			
Elevations (DF, RKB, RT, GR, etc.)	Name of Producing Formation		Top Oil/Gas Pay		Tubing Depth			
Perforations				Depth Casing Shoe				
TUBING, CASING AND CEMENTING RECORD								
HOLE SIZE	CASING & TUBING SIZE		DEPTH SET		SACKS CEMENT			

V. TEST DATA AND REQUEST FOR ALLOWABLE

OIL WELL (Test must be after recovery of total volume of load oil and must be equal to or exceed top allowable for this depth or be for full 24 hours.)

Date First New Oil Run To Tank	Date of Test	Producing Method (Flow, pump, gas lift, etc.)	
Length of Test	Tubing Pressure	Casing Pressure	Choke Size
Actual Prod. During Test	Oil - Bbls.	Water - Bbls.	Gas - MCF

GAS WELL

Actual Prod. Test - MCF/D	Length of Test	Bbls. Condensate/MCF	Gravity of Condensate
Testing Method (pilot, back pr.)	Tubing Pressure (Shut-in)	Casing Pressure (Shut-in)	Choke Size

VI. OPERATOR CERTIFICATE OF COMPLIANCE

I hereby certify that the rules and regulations of the Oil Conservation Division have been complied with and that the information given above is true and complete to the best of my knowledge and belief.

Signature
Paul U. Yarbrough Sr. Analyst
Printed Name
09-21-90 Title
915-686-5583 Telephone No.
Date

OIL CONSERVATION DIVISION

Date Approved **SEP 24 1990**

By **ORIGINAL SIGNED BY JERRY SEXTON**
DISTRICT I SUPERVISOR

Title

INSTRUCTIONS: This form is to be filed in compliance with Rule 1104

- 1) Request for allowable for newly drilled or deepened well must be accompanied by tabulation of deviation tests taken in accordance with Rule 111.
- 2) All sections of this form must be filled out for allowable on new and recompleted wells.
- 3) Fill out only Sections I, II, III, and VI for changes of operator, well name or number, transporter, or other such changes.
- 4) Separate Form C-104 must be filed for each pool in multiply completed wells.

UNITED STATES
DEPARTMENT OF THE INTERIOR
BUREAU OF LAND MANAGEMENT

SUBMIT IN DUPLICATE*

(See other instructions on reverse side)

FOR APPROVED
OMB NO. 1004-0137
Expires: December 31, 1991

5. LEASE DESIGNATION AND SERIAL NO.

LC 031740A

6. IF INDIAN, ALLOTTEE OR TRIBE NAME

P.O. BOX 1980

UNIT AGREEMENT NAME

HOBBS, NEW MEXICO 88240

8. FARM OR LEASE NAME, WELL NO.

MEYER A-1 #20

9. API WELL NO.

30-025-32215

10. FIELD AND POOL, OR WILDCAT

EUMONT VATES 7 RVRS ON

11. SEC. T. R. E. OF BLOCK AND SURVEY OR AREA

SEC. 17, T-21S, R-36E

12. COUNTY OR PARISH

LEA

13. STATE

NM

14. PERMIT NO.

DATE ISSUED

15. DATE SPUDDED

16. DATE T.D. REACHED

17. DATE COMPL. (Ready to prod.)

18. ELEVATIONS (DF, HKS, RT, GR, ETC.)*

19. ELEV. CASINGHEAD

20. TOTAL DEPTH, MD & TVD

21. PLUG BACK T.D., MD & TVD

22. IF MULTIPLE COMPL., HOW MANY*

23. INTERVALS DRILLED BY

ROTARY TOOLS

CABLE TOOLS

24. PRODUCING INTERVAL(S), OF THIS COMPLETION—TOP, BOTTOM, NAME (MD AND TVD)*

25. WAS DIRECTIONAL SURVEY MADE

26. TYPE ELECTRIC AND OTHER LOGS RUN

27. WAS WELL CORRED

NO

NO

28. CASING RECORD (Report all strings set in well)

CASING SIZE/GRADE

WEIGHT, LB./FT.

DEPTH SET (MD)

HOLE SIZE

TOP OF CEMENT, CEMENTING RECORD

AMOUNT PULLED

8 5/8

24

425

12 1/4

325 SX

5 1/2

15.5

3799

7 7/8

800 SX

29. LINER RECORD

30. TUBING RECORD

SIZE

TOP (MD)

BOTTOM (MD)

BACKS CEMENT*

SCREEN (MD)

SIZE

DEPTH SET (MD)

PACKER SET (MD)

2 3/8

3648

2903

31. PREPARATION RECORD (Interval, size and number)

32. ACID, SHOT, FRACTURE, CEMENT SQUEEZE, ETC.

DEPTH INTERVAL (MD)

AMOUNT AND KIND OF MATERIAL USED

SEE ATTACHED

33. PRODUCTION

DATE FIRST PRODUCTION

PRODUCTION METHOD (Flowing, gas lift, pumping—size and type of pump)

WELL STATUS (Producing or shut-in)

12-25-93

FLOWING

PRODUCING

DATE OF TEST

HOURS TESTED

CHOKER SIZE

PROD'N. FOR TEST PERIOD

OIL—BBL.

GAS—MCF.

WATER—BBL.

GAS-OIL RATIO

12-28-93

24

35/64

0

423

2

55

CASING PRESSURE

CALCULATED 24-HOUR RATE

OIL—BBL.

GAS—MCF.

WATER—BBL.

OIL GRAVITY-API (CORR.)

0

423

2

34. DISPOSITION OF GAS (Sold, used for fuel, vented, etc.)

TEST WITNESSED BY

SOLD

J. BLACK

35. LIST OF ATTACHMENTS

36. I hereby certify that the foregoing and attached information is complete and correct as determined from all available records

SIGNED

TITLE

DATE

SR. STAFF ANALYST

1-11-94

*(See Instructions and Spaces for Additional Data on Reverse Side)

Title 18 U.S.C. Section 1001, makes it a crime for any person knowingly and willfully to make to any department or agency of the United States any false, fictitious or fraudulent statements or representations as to any matter within its jurisdiction.