

VERSION: 2.24

CHACO1

FINISH DEPTH: 1022.7 FEET DIRECTION: UP DATE: 08/02/88 TIME: 10:48:21 MODE: RECOMPUTE

COLLAR LOCATOR
-10000 MILLIVOLTS 1000

GAMMA RAY
0 API 150

1100

GAMMA RAY
0 API 150

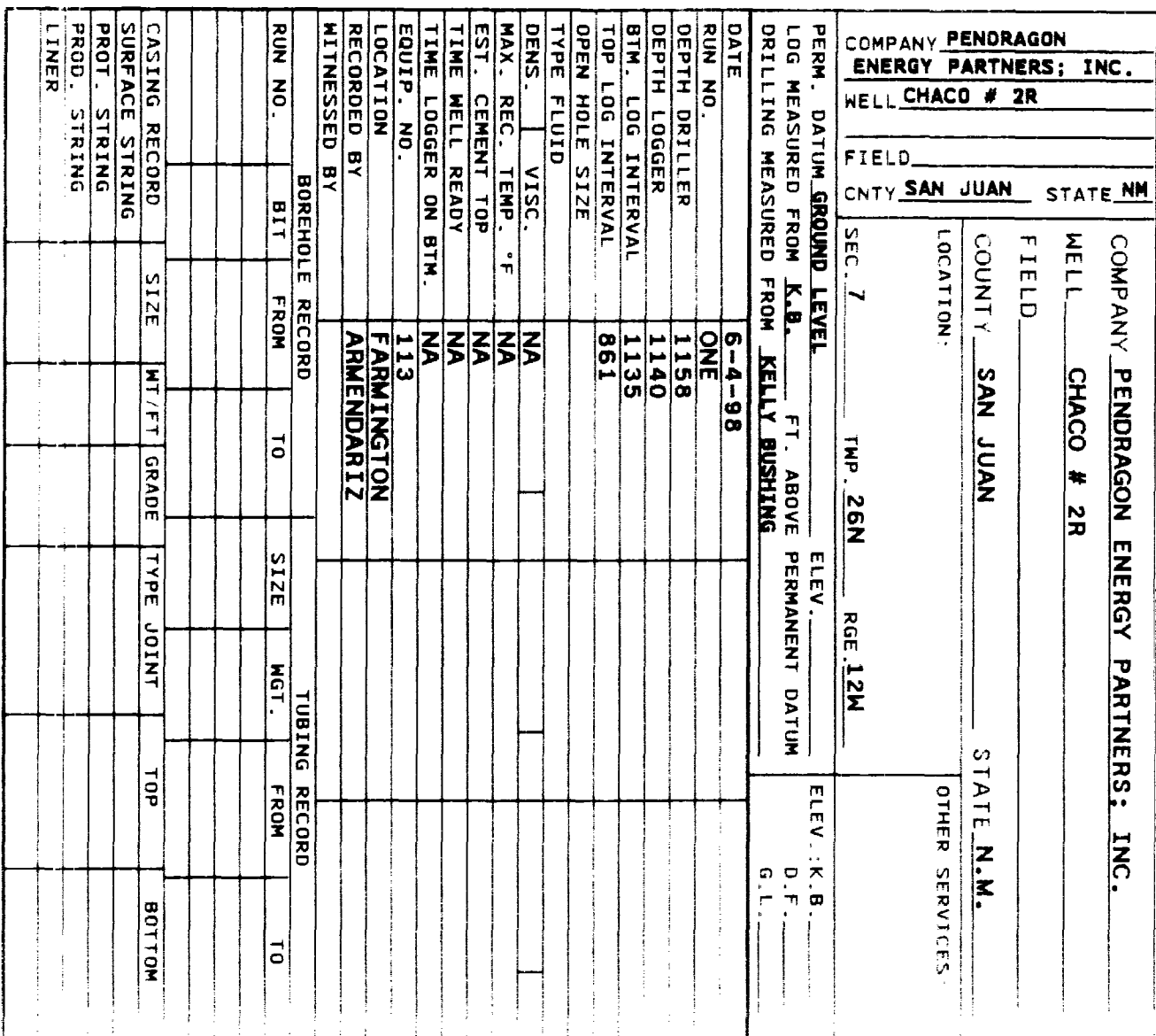
COLLAR LOCATOR
-10000 MILLIVOLTS 1000

START DEPTH: 1180.0 FEET DIRECTION: UP DATE: 08/02/88 TIME: 10:40:48 MODE: RECOMPUTE

CHACO1

VERSION: 2.24

The figure is a log plot with a grid. The vertical axis is labeled '1100' and the horizontal axis is labeled '0 API 150'. The plot shows two curves: a jagged line on the left labeled 'GAMMA RAY' and a series of spikes on the right labeled 'COLLAR LOCATOR'. The plot is titled 'CHACO1' and includes version information 'VERSION: 2.24'. The plot is divided into four quadrants by a horizontal line at the top and a vertical line on the left. The top-left quadrant contains the 'COLLAR LOCATOR' and 'GAMMA RAY' labels. The top-right quadrant contains the '1100' label. The bottom-left quadrant contains the 'GAMMA RAY' and 'COLLAR LOCATOR' labels. The bottom-right quadrant is empty.



VERSION: 2.24

CHA

FINISH DEPTH: 859.4 FEET DIRECTION: UP DATE: 06/04/98 TIME: 09:27:32 MODE: RECOMPUTE

COLLAR LOCATOR

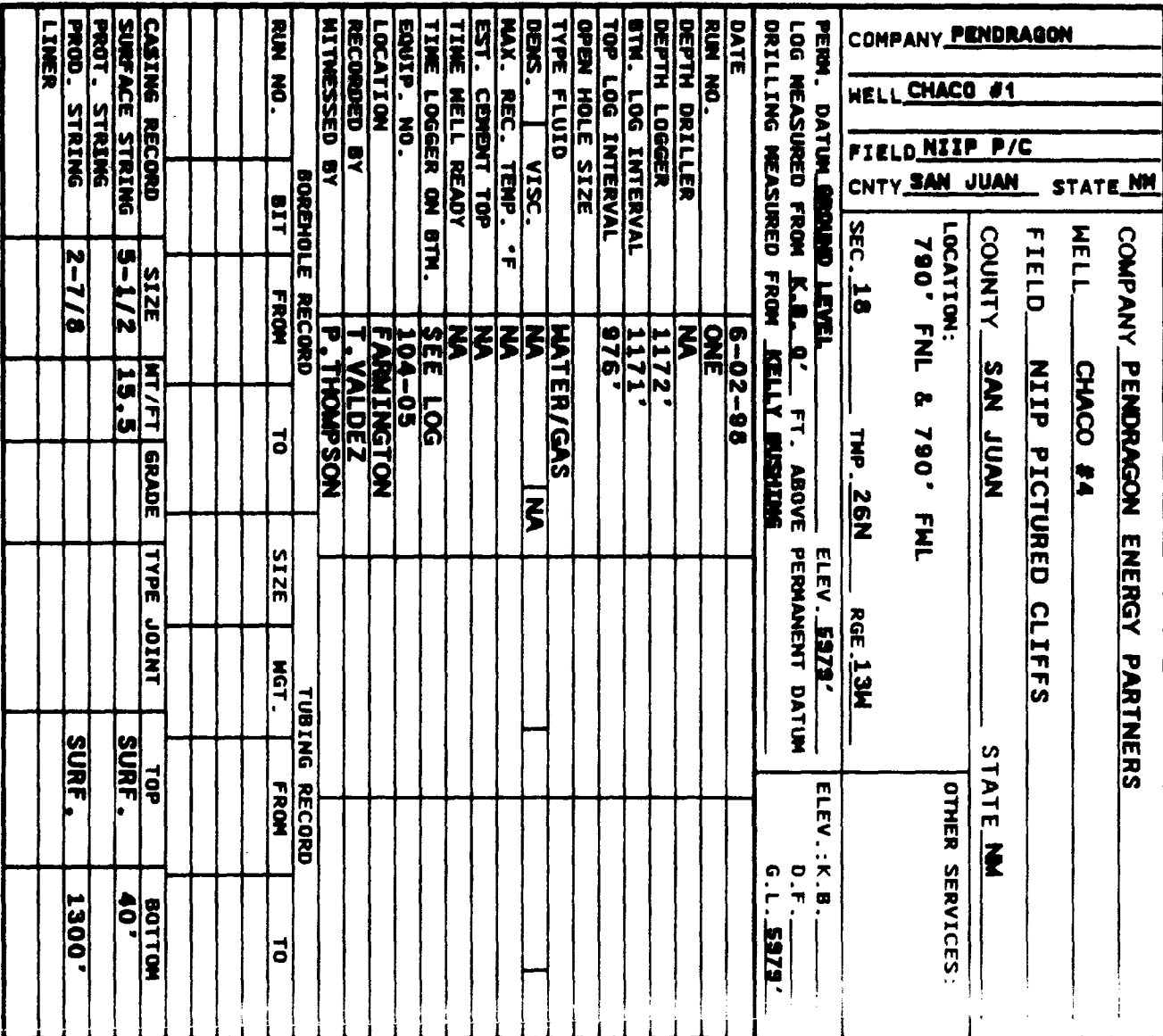
-10000 MILLIVOLTS 1500

GAMMA RAY

0 API 160

900

1000



VERSION: 2.24

CHACO4

FINISH DEPTH: 978.0 FEET DIRECTION: UP DATE: 08/02/98 TIME: 14:38:14 MODE: RECOMPUTE

GAMMA RAY

0 API 100

COLLAR LOCATOR

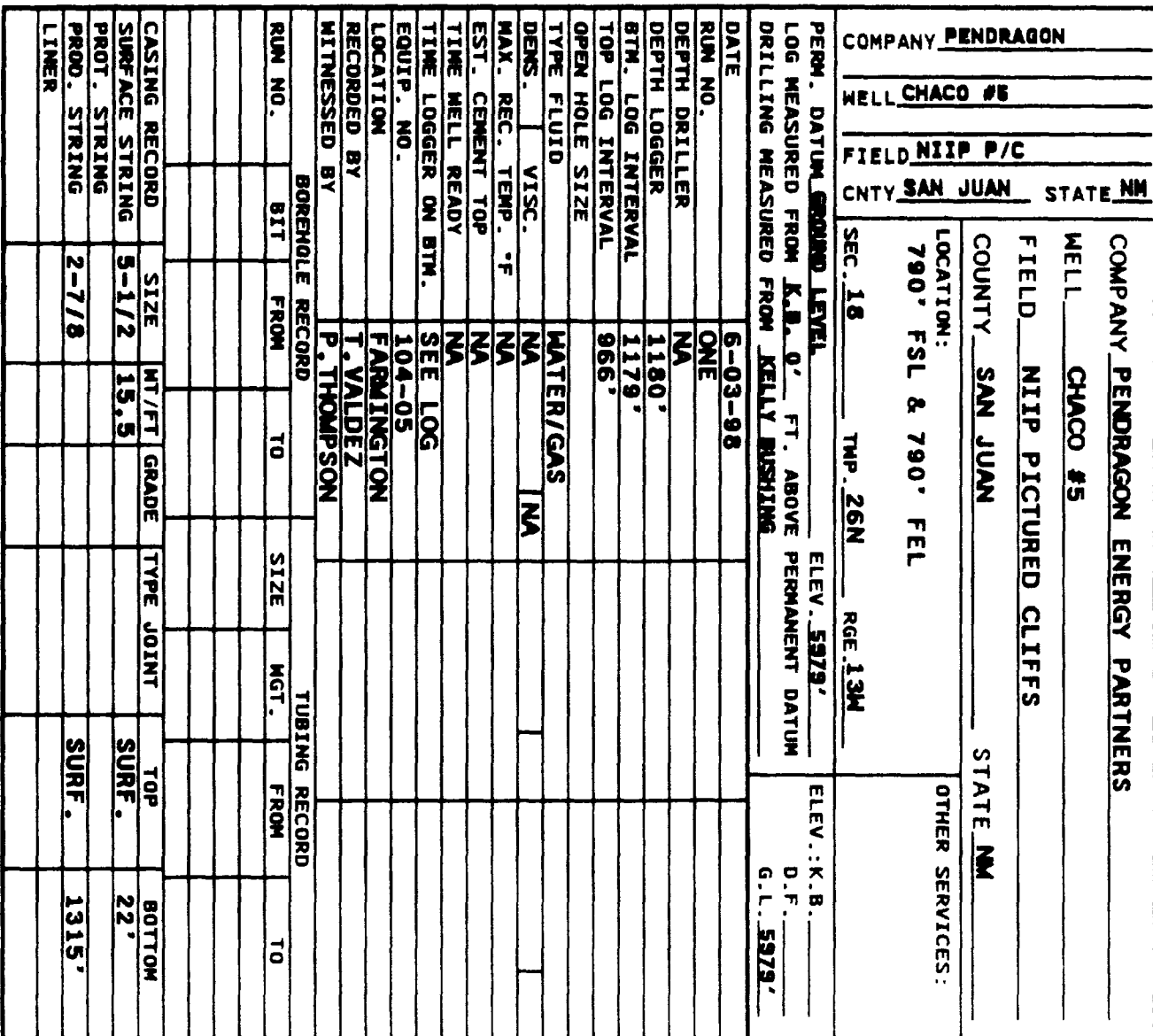
-10000 MILLIVOLTS 1000

1000

1100

COLLAR LOCATOR

The figure is a log plot with two main data series: Gamma Ray and Collar Locator. The Gamma Ray scale is at the top, ranging from 0 to 100 API. The Collar Locator scale is below it, ranging from -10000 to 1000 Millivolts. The plot area is a grid. The Gamma Ray data is represented by a wavy line that fluctuates between approximately 20 and 80 API. The Collar Locator data is represented by a series of sharp, vertical spikes that reach up to the 1000 Millivolt mark. The depth scale on the right side of the plot ranges from 1000 to 1100 feet, with major grid lines every 100 feet and minor grid lines every 10 feet. The plot is titled 'CHACO4' and includes a header with 'VERSION: 2.24' and a footer with 'COLLAR LOCATOR'.



VERSION: 2.24

CHAC05

FINISH DEPTH: 888.8 FEET DIRECTION: UP DATE: 08/03/88 TIME: 13:23:38 MODE: RECOMPUTE

COLLAR LOCATOR

-10000 MILLIVOLTS 1000

GAMMA RAY

0 API 180

1000

1100