

EXHIBIT "B"
SCHEDULE SHOWING THE PERCENTAGE AND KIND OF OWNERSHIP OF OIL AND GAS INTERESTS
BEAR CANYON UNIT AREA
RIO ARriba COUNTY, NEW MEXICO

TRACT NO.	DESCRIPTION OF LAND	NUMBER OF ACRES	SERIAL NUMBER AND EXPIRATION DATE OF LEASE	BASIC ROYALTY AND PERCENTAGE	LESSEE OF RECORD AND PERCENTAGE	OVERRIDING ROYALTY AND PERCENTAGE	WORKING INTEREST AND PERCENTAGE
-----------	---------------------	-----------------	--------------------------------------------	------------------------------	---------------------------------	-----------------------------------	---------------------------------

FEDERAL LANDS:

1.	<u>T26N-R2W, N.M.P.M.</u>	360.00	NM-7993	U.S.A.-A11	Dugan Production Corp.	Billie Robinson	Dugan Production Corp.
	Sec. 3: <u>W¹₂SW¹₄</u>				50%		50%
	Sec. 11: <u>NE¹₄SW¹₄, W¹₂SE¹₄</u>		Effective 11-1-68		30%		30%
	Sec. 13: <u>S¹₂S¹₂</u>				20%		20%
			HB P				

2.	<u>T26N-R2W, N.M.P.M.</u>	320.00	NM-13809	U.S.A.-A11	W. M. Gallaway	100% F. J. Bradshaw Estate	5% W. M. Gallaway	100%
	Sec. 3: <u>E¹₂SW¹₄</u>							
	Sec. 10: <u>E¹₂NW¹₄, SE¹₄</u>		Effective 6-1-71					
			HB P					

3.	<u>T26N-R2W, N.M.P.M.</u> Sec. 2: SW $\frac{1}{4}$ SW $\frac{1}{4}$ Sec. 10: E $\frac{1}{2}$ SW $\frac{1}{4}$	120.00	NM-19560 Effective 12-1-73 HBP	U.S.A.-A11	W. M. Gallaway	100%	Charles R. Greer	5%	W. M. Gallaway	100%
4.	<u>T26N-R2W, N.M.P.M.</u> Sec. 3: N $\frac{1}{2}$ SE $\frac{1}{4}$	80.00	NM-28811 Effective 11-1-76 Expires 10-31-86	U.S.A.-A11	Michael W. Murphy	100%	Charles Meeker & Charles Niemeth	6.25%	Michael W. Murphy	100%
5.	<u>T26N-R2W, N.M.P.M.</u> Sec. 11: W $\frac{1}{2}$ SW $\frac{1}{4}$, SE $\frac{1}{4}$ SW $\frac{1}{4}$	120.00	NM-29756 Effective 3-1-82 HBP	U.S.A.-A11	Southland Royalty Company	100%	Marian Z. Simmons and Detroit Bank and Trust Company Co-Trustees of Charles D. Simmons Trust	5%	Southland Royalty Company	100%

6.	<u>T26N-R2W, N.M.P.M.</u>	240.00	NM-58703	U.S.A.-All	Amoco Production Company	Anthony Minerals Company	Amoco Production Company	
	Sec. 13: $N\frac{1}{2}NE\frac{1}{4}$				100%	H. F. Boles	4.25%	
	Sec. 14: $SE\frac{1}{4}$		Effective			Ben Donegan	.6666%	
			9-1-84			Nancy June Nolan	.3333%	
			Expires			Michael C. Donegan	.3333%	
			8-31-94					
7.	<u>T26N-R2W, N.M.P.M.</u>	40.00	NM-62743	U.S.A.-All	William E. Jeffers	100%	William E. Jeffers	100%
	Sec. 2: $NW\frac{1}{4}SW\frac{1}{4}$							
			Effective					
			10-1-85					
			Expires					
			9-30-95					

7	FEDERAL	TRACTS	TOTALING	1,280.00	ACRES	OR	26.67%	OF	UNIT	AREA
---	---------	--------	----------	----------	-------	----	--------	----	------	------

PATENTED LANDS:

8.	T26N-R2W, N.M.P.M. Sec. 1: S $\frac{1}{2}$	320.00	8-31-87	Oliver Windale Davis and Ruby Irene Ozanich, Trustees of the Frederick Harold Davis and Sarah Alma Davis Family Trust 46.875%	Amoco Production Company	100%	Jeff Wiepking Tom Fullerton Hunt Walker James B. Fullerton	.8333% .8333% .8333% .8333%	Amoco Production Company	46.875%
			3-28-90	John B. Pierce	Amoco Production Company	100%	Jeff Wiepking Tom Fullerton Hunt Walker James B. Fullerton	.8333% .8333% .8333% .8333%	Amoco Production Company	3.75%
			3-28-90	David Pierce	Amoco Production Company	100%	Jeff Wiepking Tom Fullerton Hunt Walker James B. Fullerton	.8333% .8333% .8333% .8333%	Amoco Production Company	3.75%
			3-28-90	Susan Pierce Nelson	Amoco Production Company	100%	Jeff Wiepking Tom Fullerton Hunt Walker James B. Fullerton	.8333% .8333% .8333% .8333%	Amoco Production Company	3.75%
			3-28-90	Dirk Vanhorn Reemtsma	Amoco Production Company	100%	Jeff Wiepking Tom Fullerton Hunt Walker James B. Fullerton	.8333% .8333% .8333% .8333%	Amoco Production Company	2.8125%
			3-28-90	Lance B. Reemtsma	Amoco Production Company	100%	Jeff Wiepking Tom Fullerton Hunt Walker James B. Fullerton	.8333% .8333% .8333% .8333%	Amoco Production Company	2.8125%

8. Cont'd.

7-9-89	Roland D. Pritchett & April Annette Pritchett (h&w) 16.5625%	Amoco Production Company	100%	Jeff Wiepking Tom Fullerton Hunt Walker James B. Fullerton	.8333% .8333% .8333% .8333%	Amoco Production Company	16.5625%
9-9-87	United New Mexico Trust Company, Trustee for the Arthur L. Duff, Jr. Trust 8.28125%	Amoco Production Company	100%	Jeff Wiepking Tom Fullerton Hunt Walker James B. Fullerton	.3125% .3125% .3125% .3125%	Amoco Production Company	8.28125%
9-9-87	Kenneth C. Leach and Judith Dianne Duff Leach, as Co-Trustees of the Duff-Leach Family Trust dated April 20, 1984 8.28125%	Amoco Production Company	100%	Jeff Wiepking Tom Fullerton Hunt Walker James B. Fullerton	.3125% .3125% .3125% .3125%	Amoco Production Company	8.28125%
9-9-89	Juanita D. Cochran, Individually and as Co-Trustee of the Testamentary Trust created by the Last Will and Testament of Guy Davis 1.5625%	Amoco Production Company	100%	Jeff Wiepking Tom Fullerton Hunt Walker James B. Fullerton	1.875% 1.875% 1.875% 1.875%	Amoco Production Company	1.5625%
7-9-89	Guy C. Davis, Individually and as Co-Trustee of the Testamentary Trust created by the Last Will and Testament of Guy Davis 1.5625%	Amoco Production Company	100%	Jeff Wiepking Tom Fullerton Hunt Walker James B. Fullerton	1.875% 1.875% 1.875% 1.875%	Amoco Production Company	1.5625%

9.	<u>T26N-R2W, N.M.P.M.</u> <u>Sec. 2: E$\frac{1}{2}$SE$\frac{1}{4}$</u>	80.00	4-30-88	Armando Vidal Garcia, Jose Blas Garcia & Olivia Garcia 50%	Amoco Production Company	100%	None	Amoco Production Company	50%
			2-8-89	Frank Kell Cahoon & Lula Jane Seydell 16.6666%	Amoco Production Company	100%	None	Amoco Production Company	16.6666%
			7-23-88	Thomas S. Schalk & Betty June Schalk (h&w) 8.3333%	Amoco Production Company	100%	None	Amoco Production Company	8.3333%
			10-5-88	Donald C. Ward 4.1667%	Amoco Production Company	100%	None	Amoco Production Company	4.1667%
			11-1-88	Peggy Williamson McCullough 4.1667%	Amoco Production Company	100%	None	Amoco Production Company	4.1667%
			10-5-88	May Anna Anderson & Carl T. Anderson (w&h) 4.1667%	Amoco Production Company	100%	None	Amoco Production Company	4.1667%
			10-5-88	John R. Bowmer, as Executor of the Estate of John S. Bristol & the Estate of Frances C. Bristol 2.7778%	Amoco Production Company	100%	None	Amoco Production Company	2.7778%
			10-5-88	Cynthia B. Bowmer 2.7778%	Amoco Production Company	100%	None	Amoco Production Company	2.7778%
			10-5-88	Suzanne B. Kay & David G. Kay (w&h) 2.7778%	Amoco Production Company	100%	None	Amoco Production Company	2.7778%

9. Cont'd.

11-12-88	W. C. Duncan, II as Trustee for Mae Bell Duncan under the Will of William Collins	Amoco Production Company	100%	None	Amoco Production Company	2.0833%
			2.0833%			

11-12-88	W. C. Duncan, II	2.0833%	Amoco Production Company	100%	None	Amoco Production Company	2.0833%
----------	------------------	---------	--------------------------	------	------	--------------------------	---------

10. T26N-R2W, N.M.P.M.

320.00

3-4-88

Sec. 2: $W\frac{1}{2}SE\frac{1}{4}$,
 $E\frac{1}{2}SW\frac{1}{4}$
 Sec. 11: $W\frac{1}{2}NE\frac{1}{4}$,
 $E\frac{1}{2}NW\frac{1}{4}$

Oliver Windale Davis and Ruby Irene Ozanich, Trustees of the Frederick Harold Davis and Sarah Alma Davis Family Trust	From the surface to 100 feet below the base of the Dakota Formation:	None
100%	Amoco Production Company	100%

From the surface to
100 feet below the
base of the Dakota
Formation:
Amoco Production
Company 100%

<u>From said depth and below:</u>	
Unleased	100%

From said depth and below:
Unleased 100%

11.	T26N-R2W, N.M., P.M. Sec. 3: S&SE $\frac{1}{4}$	80.00	2-8-89	Frank Kell Cahoon and Lula Jane Seydel 16.6666%	Amoco Production Company 100%	None	Amoco Production Company 16.6666%
			6-26-89	Maxine Bodenhamer 12.5%	Amoco Production Company 100%	Jeff Wiepking Tom Fullerton Hunt Walker James B. Fullerton .8333% .8333% .8333% .8333%	Amoco Production Company 12.5%
			11-10-89	The Portales National Bank, as Trustee of the Testamentary Trust created under the Last Will and Testament of M. H. McGrail 12.5%	Amoco Production Company 100%	Jeff Wiepking Tom Fullerton Hunt Walker James B. Fullerton .8333% .8333% .8333% .8333%	Amoco Production Company 12.5%
			7-23-88	Thomas S. Schalk & Betty June Schalk (h&w) 8.3333%	Amoco Production Company 100%	None	Amoco Production Company 8.3333%
			12-18-89	Beverly Jenkins 4.1667%	Amoco Production Company 100%	Jeff Wiepking Tom Fullerton Hunt Walker James B. Fullerton .8333% .8333% .8333% .8333%	Amoco Production Company 6.25%
			12-18-89	Barbara Simpson, formerly Barbara Downen 4.1667%	Amoco Production Company 100%	Jeff Wiepking Tom Fullerton Hunt Walker James B. Fullerton .8333% .8333% .8333% .8333%	Amoco Production Company 6.25%
			10-5-88	Donald C. Ward 4.1667%	Amoco Production Company 100%	None	Amoco Production Company 4.1667%
			11-1-88	Peggy Williamson McCullough 4.1667%	Amoco Production Company 100%	None	Amoco Production Company 4.1667%

11. Cont'd.

10-5-88	May Anna Anderson & Carl T. Anderson (w&h)	4.1667%	Amoco Production Company	100%	None		Amoco Production Company	4.1667%
12-18-89	Betty Jennings	4.1666%	Amoco Production Company	100%	Jeff Wiepking Tom Fullerton Hunt Walker James B. Fullerton	.8333% .8333% .8333% .8333%	Amoco Production Company	4.1666%
10-5-88	John R. Bowmer, as Executor of the Estate of John S. Bristol & the Estate of Frances C. Bristol	2.7778%	Amoco Production Company	100%	None		Amoco Production Company	2.7778%
10-5-88	Cynthia B. Bowmer	2.7778%	Amoco Production Company	100%	None		Amoco Production Company	2.7778%
10-5-88	Suzanne B. Kay & David G. Kay (w&h)	2.7778%	Amoco Production Company	100%	None		Amoco Production Company	2.7778%
6-27-89	J. W. Jones & Myra Loudene Jones (h&w)	2.0833%	Amoco Production Company	100%	Jeff Wiepking Tom Fullerton Hunt Walker James B. Fullerton	.8333% .8333% .8333% .8333%	Amoco Production Company	2.0833%
6-11-89	John C. Robertson & Janice Eugenia Robertson (h&w)	2.0833%	Amoco Production Company	100%	Jeff Wiepking Tom Fullerton Hunt Walker James B. Fullerton	.8333% .8333% .8333% .8333%	Amoco Production Company	2.0833%

11. Cont'd.

8-3-87	Susan Elizabeth Schulze 2.0833%	Amoco Production Company	100%	Jeff Wiepking Tom Fullerton Hunt Walker James B. Fullerton	.8333% .8333% .8333% .8333%	Amoco Production Company	2.0833%
8-7-87	Harold Adkins & Linda Muriel Adkins (h&w) 2.0833%	Amoco Production Company	100%	Jeff Wiepking Tom Fullerton Hunt Walker James B. Fullerton	.8333% .8333% .8333% .8333%	Amoco Production Company	2.0833%
6-27-89	Edgar Alfred Boring & Evelyn Boring (h&w) 2.0833%	Amoco Production Company	100%	Jeff Wiepking Tom Fullerton Hunt Walker James B. Fullerton	.8333% .8333% .8333% .8333%	Amoco Production Company	2.0833%
11-12-88	W. C. Duncan, II, as Trustee for Mae Bell Duncan under the will of William Collins 2.0833%	Amoco Production Company	100%	None		Amoco Production Company	2.0833%
11-12-88	W. C. Duncan, II 2.0833%	Amoco Production Company	100%	None		Amoco Production Company	2.0833%
6-11-89	Melvin D. Rueckhaus & Anne C. Rueckhaus (h&w) 1.25%	Amoco Production Company	100%	Jeff Wiepking Tom Fullerton Hunt Walker James B. Fullerton	.8333% .8333% .8333% .8333%	Amoco Production Company	1.25%
11-18-88	U. S. Royalties Corporation .8335%	Kindermac Partners, A Colorado General Partnership	100%	None		Kindermac Partners, A Colorado General Partnership	.8335%

12.	T26N-R2W, N.M.P.M. Sec. 10: NE $\frac{1}{4}$ Sec. 11: W $\frac{1}{2}$ NW $\frac{1}{4}$	240.00	2-8-89	Frank Kell Cahoon and Lula Jane Seydel 16.6666%	Amoco Production Company 100%	None	Amoco Production Company 16.6666%
			6-26-89	Maxine Bodenhamer 12.5%	Amoco Production Company 100%	Jeff Wiepking Tom Fullerton Hunt Walker James B. Fullerton .8333%	Amoco Production Company 12.5%
			11-10-89	The Portales National Bank, as Trustee of the Testamentary Trust created under the Last Will and Testament of M. H. McGrail 12.5%	Amoco Production Company 100%	Jeff Wiepking Tom Fullerton Hunt Walker James B. Fullerton .8333%	Amoco Production Company 12.5%
			7-23-88	Thomas S. Schalk & Betty June Schalk (h&w) 8.3333%	Amoco Production Company 100%	None	Amoco Production Company 8.3333%
			12-18-89	Beverly Jenkins 4.1667%	Amoco Production Company 100%	Jeff Wiepking Tom Fullerton Hunt Walker James B. Fullerton .8333%	Amoco Production Company 6.25%
			12-18-89	Barbara Simpson, formerly Barbara Downen 4.1667%	Amoco Production Company 100%	Jeff Wiepking Tom Fullerton Hunt Walker James B. Fullerton .8333%	Amoco Production Company 6.25%
			10-5-88	Donald C. Ward 4.1667%	Amoco Production Company 100%	None	Amoco Production Company 4.1667%
			11-1-88	Peggy Williamson McCullough 4.1667%	Amoco Production Company 100%	None	Amoco Production Company 4.1667%

12. Cont'd.

10-5-88	May Anna Anderson & Carl T. Anderson (w&h)	4.1667%	Amoco Production Company	100%	None	Amoco Production Company	4.1667%
12-18-89	Betty Jennings	4.1666%	Amoco Production Company	100%	Jeff Wiepking Tom Fullerton Hunt Walker James B. Fullerton	Amoco Production Company	4.1666%
10-5-88	John R. Bower, as Executor of the Estate of John S. Bristol & the Estate of Frances C. Bristol	2.7778%	Amoco Production Company	100%	None	Amoco Production Company	2.7778%
10-5-88	Cynthia B. Bower	2.7778%	Amoco Production Company	100%	None	Amoco Production Company	2.7778%
10-5-88	Suzanne B. Kay & David G. Kay (w&h)	2.7778%	Amoco Production Company	100%	None	Amoco Production Company	2.7778%
6-27-89	J. W. Jones & Myra Loudene Jones (h&w)	2.0833%	Amoco Production Company	100%	Jeff Wiepking Tom Fullerton Hunt Walker James B. Fullerton	Amoco Production Company	2.0833%
6-11-89	John C. Robertson & Janice Eugenia Robertson (h&w)	2.0833%	Amoco Production Company	100%	Jeff Wiepking Tom Fullerton Hunt Walker James B. Fullerton	Amoco Production Company	2.0833%

12. Cont'd.

8-3-87	Susan Elizabeth Schulze	2.0833%	Amoco Production Company	100%	Jeff Wiepking Tom Fullerton Hunt Walker James B. Fullerton	.8333% .8333% .8333% .8333%	Amoco Production Company	2.0833%
8-7-87	Harold Adkins & Linda Muriel Adkins (h&w)	2.0833%	Amoco Production Company	100%	Jeff Wiepking Tom Fullerton Hunt Walker James B. Fullerton	.8333% .8333% .8333% .8333%	Amoco Production Company	2.0833%
6-27-89	Edgar Alfred Boring & Evelyn Boring (h&w)	2.0833%	Amoco Production Company	100%	Jeff Wiepking Tom Fullerton Hunt Walker James B. Fullerton	.8333% .8333% .8333% .8333%	Amoco Production Company	2.0833%
11-12-88	W. C. Duncan, II, as Trustee for Mae Bell Duncan under the will of William Collins	2.0833%	Amoco Production Company	100%	None		Amoco Production Company	2.0833%
11-12-88	W. C. Duncan, II	2.0833%	Amoco Production Company	100%	None		Amoco Production Company	2.0833%
6-11-89	Melvin D. Rueckhaus & Anne C. Rueckhaus (h&w)	1.25%	Amoco Production Company	100%	Jeff Wiepking Tom Fullerton Hunt Walker James B. Fullerton	.8333% .8333% .8333% .8333%	Amoco Production Company	1.25%
11-18-88	U. S. Royalties Corporation	.8335%	Kindermac Partners, A Colorado General Partnership	100%	None		Kindermac Partners, A Colorado General Partnership	.8335%

13.	<u>T26N-R2W, N.M.P.M.</u> <u>Sec. 10: $W\frac{1}{2}W\frac{1}{2}$</u>	160.00	3-3-88	Oliver Windale Davis and Ruby Irene Ozanich, Trustees of the Frederick Harold Davis and Sarah Alma Davis Family Trust 100%	<u>From the base of the</u> <u>Mesaverde Formation</u> <u>down to a depth of</u> <u>100 feet below the</u> <u>base of the Dakota</u> <u>Formation:</u> Amoco Production Company 100%	<u>From the base of the</u> <u>Mesaverde Formation</u> <u>down to a depth of</u> <u>100 feet below the</u> <u>base of the Dakota</u> <u>Formation:</u> Amoco Production Company 100%
14.	<u>T26N-R2W, N.M.P.M.</u> <u>Sec. 11: $E\frac{1}{2}NE\frac{1}{4}$, $NE\frac{1}{4}SE\frac{1}{4}$</u>	120.00	4-30-88	Armando Vidal Garcia, Jose Blas Garcia & Olivia Garcia 50%	Amoco Production Company 100%	Amoco Production Company 50%
			2-8-89	Frank Kell Cahoon & Lula Jane Seydell 16.6666%	Amoco Production Company 100%	Amoco Production Company 16.6666%
			7-23-88	Thomas S. Schalk & Betty June Schalk (h&w) 8.3333%	Amoco Production Company 100%	Amoco Production Company 8.3333%
			10-5-88	Donald C. Ward 4.1667%	Amoco Production Company 100%	Amoco Production Company 4.1667%
			10-5-88	May Anna Anderson & Carl T. Anderson (w&h) 4.1667%	Amoco Production Company 100%	Amoco Production Company 4.1667%
			11-1-88	Peggy Williamson McCullough 4.1667%	Amoco Production Company 100%	Amoco Production Company 4.1667%

As to other depths:
Unleased 100%

As to other depths:
Unleased 100%

14. Cont'd.	10-5-88	John R. Bowmer, as Executor of the Estate of John S. Bristol & the Estate of Frances C. Bristol	2.7778%	Amoco Production Company	100%	None	Amoco Production Company	2.7778%
	10-5-88	Cynthia B. Bowmer	2.7778%	Amoco Production Company	100%	None	Amoco Production Company	2.7778%
	10-5-88	Suzanne B. Kay & David G. Kay (w&h)	2.7778%	Amoco Production Company	100%	None	Amoco Production Company	2.7778%
	11-12-88	W. C. Duncan, II, as Trustee for Mae Bell Duncan under the will of William Collins	2.0833%	Amoco Production Company	100%	None	Amoco Production Company	2.0833%
	11-12-88	W. C. Duncan, II	2.0833%	Amoco Production Company	100%	None	Amoco Production Company	2.0833%

15.	<u>T26N-R2W, N.M.P.M.</u> Sec. 11: SE $\frac{1}{4}$ SE $\frac{1}{4}$ Sec. 14: NE $\frac{1}{4}$ NE $\frac{1}{4}$	80.00	6-7-89	William A. Riley & Lois Dawn Riley (h&w) and Lorena A. Riley 50%	Amoco Production Company	100%	Jeff Wiepking Tom Fullerton Hunt Walker James B. Fullerton	1.875% 1.875% 1.875% 1.875%	Amoco Production Company	50%
			2-8-89	Frank Kell Cahoon & Lula Jane Seydell 16.6666%	Amoco Production Company	100%	None		Amoco Production Company	16.6666%
			7-23-88	Thomas S. Schalk & Betty June Schalk (h&w) 8.3333%	Amoco Production Company	100%	None		Amoco Production Company	8.3333%
			10-5-88	Donald C. Ward 4.1667%	Amoco Production Company	100%	None		Amoco Production Company	4.1667%
			10-5-88	May Anna Anderson & Carl T. Anderson (w&h) 4.1667%	Amoco Production Company	100%	None		Amoco Production Company	4.1667%
			11-1-88	Peggy Williamson McCullough 4.1667%	Amoco Production Company	100%	None		Amoco Production Company	4.1667%
			10-5-88	John R. Bower, as Executor of the Estate of John S. Bristol and the Estate of Frances C. Bristol 2.7778%	Amoco Production Company	100%	None		Amoco Production Company	2.7778%
			10-5-88	Cynthia B. Bower 2.7778%	Amoco Production Company	100%	None		Amoco Production Company	2.7778%
			10-5-88	Suzanne B. Kay & David G. Kay (w&h) 2.7778%	Amoco Production Company	100%	None		Amoco Production Company	2.7778%

15. Cont'd.

11-12-88	W. C. Duncan, II, as Trustee for Mae Bell Duncan under the will of William Collins	Amoco Production Company	100%	None	Amoco Production Company	2.0833%
	2.0833%					

11-12-88	W. C. Duncan, II	2.0833%	Amoco Production Company	100%	None	Amoco Production Company	2.0833%
----------	------------------	---------	--------------------------	------	------	--------------------------	---------

16.	T26N-R2W, N.M.P.M. Sec. 12: NW $\frac{1}{4}$	160.00	8-31-87	Oliver Windale Davis and Ruby Irene Ozanich,	Amoco Production Company	100%	Jeff Wiepking Tom Fullerton	.8333% .8333%	Amoco Production Company	25%
-----	-------------------------------------------------	--------	---------	-------------------------------------------------	-----------------------------	------	--------------------------------	------------------	-----------------------------	-----

6-11-89	Melvin D. Rueckhaus & Anna C. Rueckhaus (h&w)	25%	Amoco Production Company	100%	Jeff Wiepking Tom Fullerton Hunt Walker James B. Fullerton	.8333% .8333% .8333% .8333%	Amoco Production Company	25%
---------	-----------------------------------------------	-----	--------------------------	------	---------------------------------------------------------------------	--------------------------------------	--------------------------	-----

2-8-89	Frank Kell Cahoon & Lula Jane Seydell	Amoco Production Company	100%	None	Amoco Production Company	16.6666%
--------	---------------------------------------	--------------------------	------	------	--------------------------	----------

7-23-88	Thomas S. Schalk & Betty June Schalk (h&w)	8.33333%	Amoco Production Company	100%	None	Amoco Production Company	8.33333%
---------	--------------------------------------------	----------	--------------------------	------	------	--------------------------	----------

10-5-88	May Anna Anderson & Carl T. Anderson (w/wh)	Amoco Production Company	100%	None	Amoco Production Company	4.1667%
---------	---------------------------------------------	--------------------------	------	------	--------------------------	---------

16. Cont'd.

10-5-88	Donald C. Ward	4.1667%	Amoco Production Company	100%	None	Amoco Production Company	4.1667%
11-1-88	Peggy Williamson McCullough	4.1667%	Amoco Production Company	100%	None	Amoco Production Company	4.1667%
10-5-88	John R. Bowmer, as Executor of the Estate of John S. Bristol & the Estate of Frances C. Bristol	2.7778%	Amoco Production Company	100%	None	Amoco Production Company	2.7778%
10-5-88	Suzanne B. Kay & David G. Kay (w&h)	2.7778%	Amoco Production Company	100%	None	Amoco Production Company	2.7778%
10-5-88	Cynthia B. Bowmer	2.7778%	Amoco Production Company	100%	None	Amoco Production Company	2.7778%
11-12-88	W. C. Duncan, II, as Trustee for Mae Bell Duncan under the will of William Collins	2.0833%	Amoco Production Company	100%	None	Amoco Production Company	2.0833%
11-12-88	W. C. Duncan, II	2.0833%	Amoco Production Company	100%	None	Amoco Production Company	2.0833%

17.	<u>T26N-R2W, N.M.P.M.</u>	240.00	6-7-89	William A. Riley & Lois Dawn Riley (h&w) and Lorena A. Riley	Amoco Production Company	100%	Jeff Wiepking Tom Fullerton Hunt Walker James B. Fullerton	1.875% 1.875% 1.875% 1.875%	Amoco Production Company	50%
	Sec. 12: $SW\frac{1}{4}$									
	Sec. 13: $NE\frac{1}{4}NW\frac{1}{4}$									
			2-8-89	Frank Kell Cahoon & Lula Jane Seydell	Amoco Production Company	100%	None		Amoco Production Company	16.6666%
			7-23-88	Thomas S. Schalk & Betty June Schalk (h&w)	Amoco Production Company	100%	None		Amoco Production Company	8.3333%
			10-5-88	May Anna Anderson & Carl T. Anderson (w&h)	Amoco Production Company	100%	None		Amoco Production Company	4.1667%
			10-5-88	Donald C. Ward	Amoco Production Company	100%	None		Amoco Production Company	4.1667%
			11-1-88	Peggy Williamson McCullough	Amoco Production Company	100%	None		Amoco Production Company	4.1667%
			10-5-88	John R. Bower, as Executor of the Estate of John S. Bristol & the Estate of Frances C. Bristol	Amoco Production Company	100%	None		Amoco Production Company	2.7778%
			10-5-88	Suzanne B. Kay & David G. Kay (w&h)	Amoco Production Company	100%	None		Amoco Production Company	2.7778%
			10-5-88	Cynthia B. Bower	Amoco Production Company	100%	None		Amoco Production Company	2.7778%

17. Cont'd.

11-12-88	W. C. Duncan, II, as Trustee for Mae Bell Duncan under the will of William Collins	Amoco Production Company	100%	None	Amoco Production Company	2.0833%
			2.0833%			

11-12-88	W. C. Duncan, II	2.0833%	Amoco Production Company	100%	None	Amoco Production Company	2.0833%
----------	------------------	---------	--------------------------	------	------	--------------------------	---------

18.	T26N-R2W, N.M.P.M.	320.00	7-7-89	E. Patrick Barton, Jr.	10%	Amoco Production Company	Jeff Wiepking	1.875%	Amoco Production Company	40%
Sec. 12:	P ₂			Andrew W. Barton	10%		Tom Fullerton	1.875%		

7-7-89	Marie Louise Quarles	40%	Amoco Production Company	100%	Jeff Wiepking Tom Fullerton Hunt Walker James B. Fullerton	1.875% 1.875% 1.875% 1.875%	Amoco Production Company	40%
--------	----------------------	-----	--------------------------	------	---------------------------------------------------------------------	--------------------------------------	--------------------------	-----

7-25-89	Patricia Ann Burns Hickam	Amoco Production Company	Jeff Wiepking Tom Fullerton Hunt Walker James B. Fullerton	.8333% .8333% .8333% .8333%	Amoco Production Company	10%
	10%	100%				

7-2-89	Mary Ellen Burns Gonzales	Amoco Production Company	Jeff Wiepking Tom Fullerton Hunt Walker James B. Fullerton	.8333% .8333% .8333% .8333%	Amoco Production Company	10%
	10%					

19.	T26N-R2W, N.M.P.M. Sec. 13: $S_2N\frac{1}{2}$, $N\frac{1}{2}S_2$	320.00	9-13-87	Mercantile National Bank, Trustee for the Catherine Mary Florence Trust 25%	Amoco Production Company	100%	Jeff Wiepking Tom Fullerton Hunt Walker James B. Fullerton .3125%	Amoco Production Company	25%
			2-8-89	Frank Kell Cahoon & Lula Jane Seydell 16.6666%	Amoco Production Company	100%	None	Amoco Production Company	16.6666%
			7-15-89	Milton B. Davis & Maryetta R. Davis (h&w) 12.5%	Amoco Production Company	100%	Jeff Wiepking Tom Fullerton Hunt Walker James B. Fullerton .8333%	Amoco Production Company	12.5%
			7-23-88	Thomas S. Schalk & Betty June Schalk (h&w) 8.3333%	Amoco Production Company	100%	None	Amoco Production Company	8.3333%
			10-5-88	May Anna Anderson & Carl T. Anderson (w&h) 4.1667%	Amoco Production Company	100%	None	Amoco Production Company	4.1667%
			10-5-88	Donald C. Ward 4.1667%	Amoco Production Company	100%	None	Amoco Production Company	4.1667%
			11-1-88	Peggy Williamson McCullough 4.1667%	Amoco Production Company	100%	None	Amoco Production Company	4.1667%
			10-5-88	John R. Bower, as Executor of the Estate of John S. Bristol & the Estate of Frances C. Bristol 2.7778%	Amoco Production Company	100%	None	Amoco Production Company	2.7778%
			10-5-88	Cynthia B. Bower 2.7778%	Amoco Production Company	100%	None	Amoco Production Company	2.7778%

19. Cont'd.									
10-5-88	Suzanne B. Kay & David G. Kay (w&h)	2.7778%	Amoco Production Company	100%	None			Amoco Production Company	2.7778%
6-27-89	J. W. Jones & Myra Loudene Jones (h&w)	2.0833%	Amoco Production Company	100%	Jeff Wiepking Tom Fullerton Hunt Walker James B. Fullerton	.8333% .8333% .8333% .8333%		Amoco Production Company	2.0833%
6-11-89	John C. Robertson & Janice Eugenia Robertson (h&w)	2.0833%	Amoco Production Company	100%	Jeff Wiepking Tom Fullerton Hunt Walker James B. Fullerton	.8333% .8333% .8333% .8333%		Amoco Production Company	2.0833%
8-3-87	Susan Elizabeth Schulze	2.0833%	Amoco Production Company	100%	Jeff Wiepking Tom Fullerton Hunt Walker James B. Fullerton	.8333% .8333% .8333% .8333%		Amoco Production Company	2.0833%
8-7-87	Harold Adkins & Linda Muriel Adkins (h&w)	2.0833%	Amoco Production Company	100%	Jeff Wiepking Tom Fullerton Hunt Walker James B. Fullerton	.8333% .8333% .8333% .8333%		Amoco Production Company	2.0833%
6-27-89	Edgar Alfred Boring & Evelyn Boring (h&w)	2.0833%	Amoco Production Company	100%	Jeff Wiepking Tom Fullerton Hunt Walker James B. Fullerton	.8333% .8333% .8333% .8333%		Amoco Production Company	2.0833%
11-12-88	W. C. Duncan, II, as Trustee for Mae Bell Duncan under the will of William Collins	2.0833%	Amoco Production Company	100%	None			Amoco Production Company	2.0833%
11-12-88	W. C. Duncan, II	2.0833%	Amoco Production Company	100%	None			Amoco Production Company	2.0833%

19. Cont'd.		6-11-89	Melvin D. Rueckhaus & Anne C. Rueckhaus (h&w)	1.25%	Amoco Production Company	100%	Jeff Wiepking Tom Fullerton Hunt Walker James B. Fullerton	.8333% .8333% .8333% .8333%	Amoco Production Company	1.25%
		11-18-88	U. S. Royalties Corporation	.8335%	Kindermac Partners, A Colorado General Partnership	100%	None		Kindermac Partners, A Colorado General Partnership	.8335%
	20. <u>T26N-R2W, N.M.P.M.</u> <u>Sec. 14: W$\frac{1}{2}$SW$\frac{1}{4}$</u>	8-31-87	Frederick Harold Davis, Sr. and Sarah A. Davis (h&w)	25%	Amoco Production Company	100%	Jeff Wiepking Tom Fullerton Hunt Walker James B. Fullerton	.8333% .8333% .8333% .8333%	Amoco Production Company	25%
		7-18-88	Edward L. Howard & Connie P. Howard (h&w)	12.5%	Amoco Production Company	100%	Jeff Wiepking Tom Fullerton Hunt Walker James B. Fullerton	.3125% .3125% .3125% .3125%	Amoco Production Company	12.5%
		7-18-88	Robert B. Howard & Shirley A. Howard (h&w)	12.5%	Amoco Production Company	100%	Jeff Wiepking Tom Fullerton Hunt Walker James B. Fullerton	.3125% .3125% .3125% .3125%	Amoco Production Company	12.5%
		7-18-88	Letty Carolyn Howard	12.5%	Amoco Production Company	100%	Jeff Wiepking Tom Fullerton Hunt Walker James B. Fullerton	.3125% .3125% .3125% .3125%	Amoco Production Company	12.5%
		7-18-88	Anita H. Kramer	12.5%	Amoco Production Company	100%	Jeff Wiepking Tom Fullerton Hunt Walker James B. Fullerton	.3125% .3125% .3125% .3125%	Amoco Production Company	12.5%

20.	Cont'd.	6-26-87	Rita Louise Willis & Bank of Oklahoma, NA Co-Trustees of the Rita Louise Willis Trust	10.9375%	Amoco Production Company	100%	Jeff Wiepking Tom Fullerton Hunt Walker James B. Fullerton	.3125% .3125% .3125% .3125%	Amoco Production Company	10.9375%
		4-20-87	Kirby Exploration Company	10.9375%	Kindermac Partners, A Colorado General Partnership	100%			Kindermac Partners, A Colorado General Partnership	10.9375%
		6-18-89	Augustus P. Loring, III & Elizabeth B. Loring (h&w)	3.125%	Amoco Production Company	100%	Jeff Wiepking Tom Fullerton Hunt Walker James B. Fullerton	.8333% .8333% .8333% .8333%	Amoco Production Company	3.125%
21.	T26N-R2W, N.M.P.M. Sec. 14: S $\frac{1}{2}$ NE $\frac{1}{4}$	6-7-89	Teodora Mercure	50%	Amoco Production Company	100%	Jeff Wiepking Tom Fullerton Hunt Walker James B. Fullerton	1.875% 1.875% 1.875% 1.875%	Amoco Production Company	50%
		2-8-89	Frank Kell Cahoon & Lula Jane Seydell	16.6666%	Amoco Production Company	100%	None		Amoco Production Company	16.6666%
		7-23-88	Thomas S. Schalk & Betty June Schalk (h&w)	8.3333%	Amoco Production Company	100%	None		Amoco Production Company	8.3333%
		10-5-88	Donald C. Ward	4.1667%	Amoco Production Company	100%	None		Amoco Production Company	4.1667%

21. Cont'd.

10-5-88	May Anna Anderson & Carl T. Anderson (w&h)	4.1667%	Amoco Production Company	100%	None	Amoco Production Company	4.1667%
11-1-88	Peggy Williamson McCullough	4.1667%	Amoco Production Company	100%	None	Amoco Production Company	4.1667%
10-5-88	John R. Bower, as Executor of the Estate of John S. Bristol & the Estate of Frances C. Bristol	2.7778%	Amoco Production Company	100%	None	Amoco Production Company	2.7778%
10-5-88	Cynthia B. Bower	2.7778%	Amoco Production Company	100%	None	Amoco Production Company	2.7778%
10-5-88	Suzanne B. Kay & David G. Kay (w&h)	2.7778%	Amoco Production Company	100%	None	Amoco Production Company	2.7778%
11-12-88	W. C. Duncan, II, as Trustee for Mae Bell Duncan under the will of William Collins	2.0833%	Amoco Production Company	100%	None	Amoco Production Company	2.0833%
11-12-88	W. C. Duncan, II	2.0833%	Amoco Production Company	100%	None	Amoco Production Company	2.0833%

22.	<u>T26N-R2W, N.M.P.M.</u> Sec. 14: $NW\frac{1}{4}$, $NW\frac{1}{4}NE\frac{1}{4}$, $E\frac{1}{2}SW\frac{1}{4}$	280.00	5-26-87	T. W. Stevenson and Vivian Stevenson (h&w)	50%	Meridian Oil, Inc.	100%	None		Meridian Oil, Inc.	50%
	Unleased			Albert J. Blair, Jr. 15.625%	Unleased	100%	None			Unleased	15.625%
	5-5-89			A. G. Crumpler 12.5%	Amoco Production Company	100%	Jeff Wiepking Tom Fullerton Hunt Walker James B. Fullerton	.8333% .8333% .8333% .8333%		Amoco Production Company	12.5%
	7-2-89			Porter Finance Corporation 9.375%	Amoco Production Company	100%	Jeff Wiepking Tom Fullerton Hunt Walker James B. Fullerton	1.875% 1.875% 1.875% 1.875%		Amoco Production Company	9.375%
	7-2-89			Michael A. Milinovich and Anne K. Milinovich (h&w) 6.25%	Amoco Production Company	100%	Jeff Wiepking Tom Fullerton Hunt Walker James B. Fullerton	1.875% 1.875% 1.875% 1.875%		Amoco Production Company	6.25%
	Unleased			El Paso Natural Gas Co. 6.25%	Unleased	100%	None			Unleased	6.25%

23.	<u>T26N-R2W, N.M.P.M.</u> Sec. 15: <u>SW$\frac{1}{4}$, W$\frac{2}{3}$SE$\frac{1}{4}$, NE$\frac{1}{4}$SE$\frac{1}{4}$</u>	280.00	Unleased	A. G. Hill	37.5%	Unleased	100%	None	Unleased	37.5%
			2-8-89	Frank Kell Cahoon & Lula Jane Seydell	16.6666%	Amoco Production Company	100%	None	Amoco Production Company	16.6666%
			10-11-89	The Portales National Bank, as Trustee of the Testamentary Trust created under the Last Will and Testament of W. H. McGrail	12.5%	Amoco Production Company	100%	Jeff Wiepking Tom Fullerton Hunt Walker James B. Fullerton	Amoco Production Company	12.5%
			7-23-88	Thomas S. Schalk & Betty June Schalk (h&w)	8.3333%	Amoco Production Company	100%	None	Amoco Production Company	8.3333%
			10-5-88	May Anna Anderson & Carl T. Anderson (w&h)	4.1667%	Amoco Production Company	100%	None	Amoco Production Company	4.1667%
			10-5-88	Donald C. Ward	4.1667%	Amoco Production Company	100%	None	Amoco Production Company	4.1667%
			11-1-88	Peggy Williamson McCullough	4.1667%	Amoco Production Company	100%	None	Amoco Production Company	4.1667%
			10-5-88	John R. Bowmer, as Executor of the Estate of John S. Bristol & the Estate of Frances C. Bristol	2.7778%	Amoco Production Company	100%	None	Amoco Production Company	2.7778%
			10-5-88	Suzanne B. Kay & David G. Kay (w&h)	2.7778%	Amoco Production Company	100%	None	Amoco Production Company	2.7778%
			10-5-88	Cynthia B. Bowmer	2.7778%	Amoco Production Company	100%	None	Amoco Production Company	2.7778%

23.	Cont'd.								
		11-12-88	W. C. Duncan, II, as Trustee for Mae Bell Duncan under the will of William Collins	2.0833%	Amoco Production Company	100%	None		Amoco Production Company 2.0833%
		11-12-88	W. C. Duncan, II	2.0833%	Amoco Production Company	100%	None		Amoco Production Company 2.0833%
24.	T26N-R2W, N.M.P.M. Sec. 15: SE $\frac{1}{4}$ SE $\frac{1}{4}$	40.00	8-31-87	Oliver Windale Davis and Ruby Irene Ozanich, Trustees of the Frederick Harold Davis and Sarah Alma Davis Family Trust 25%	Meridian Oil, Inc.	100%	None		Meridian Oil, Inc. 25%
		7-18-88	Edward L. Howard & Connie P. Howard (h&w)	12.5%	Amoco Production Company	100%	Jeff Wiepking Tom Fullerton Hunt Walker James B. Fullerton	.3125% .3125% .3125% .3125%	Amoco Production Company 12.5%
		7-18-88	Robert B. Howard & Shirley A. Howard (h&w)	12.5%	Amoco Production Company	100%	Jeff Wiepking Tom Fullerton Hunt Walker James B. Fullerton	.3125% .3125% .3125% .3125%	Amoco Production Company 12.5%
		7-18-88	Letty Carolyn Howard	12.5%	Amoco Production Company	100%	Jeff Wiepking Tom Fullerton Hunt Walker James B. Fullerton	.3125% .3125% .3125% .3125%	Amoco Production Company 12.5%
		7-18-88	Anita H. Kramer	12.5%	Amoco Production Company	100%	Jeff Wiepking Tom Fullerton Hunt Walker James B. Fullerton	.3125% .3125% .3125% .3125%	Amoco Production Company 12.5%

24. Cont'd.		6-26-87	Rita Louise Willis & Bank of Oklahoma, NA, Co-Trustees of the Rita Louise Willis Trust	10.9375%	Amoco Production Company	100%	Jeff Wiepking Tom Fullerton Hunt Walker James B. Fullerton	.3125% .3125% .3125% .3125%	Amoco Production Company	10.9375%
		4-20-87	Kirby Exploration Company	10.9375%	Kindermac Partners, A Colorado General Partnership	100%	None		Kindermac Partners, A Colorado General Partnership	10.9375%
		6-18-89	Augustus P. Loring, III & Elizabeth B. Loring (h&w)	3.125%	Amoco Production Company	100%	Jeff Wiepking Tom Fullerton Hunt Walker James B. Fullerton	.8333% .8333% .8333% .8333%	Amoco Production Company	3.125%
	25. T26N-R2W, N.M.P.M. Sec. 15: N $\frac{1}{2}$	8-31-87	Oliver Windale Davis and Ruby Irene Ozanich, Trustees of the Frederick Harold Davis and Sarah Alma Davis Family Trust	50%	Amoco Production Company	100%	Jeff Wiepking Tom Fullerton Hunt Walker James B. Fullerton	.8333% .8333% .8333% .8333%	Amoco Production Company	50%
		2-8-89	Frank Kell Cahoon & Lula Jane Seydel	16.6666%	Amoco Production Company	100%	None		Amoco Production Company	16.6666%
		7-23-88	Thomas S. Schalk & Betty June Schalk (h&w)	8.3333%	Amoco Production Company	100%	None		Amoco Production Company	8.3333%
		10-5-88	May Anna Anderson & Carl T. Anderson (w&h)	4.1667%	Amoco Production Company	100%	None		Amoco Production Company	4.1667%
		10-5-88	Donald C. Ward	4.1667%	Amoco Production Company	100%	None		Amoco Production Company	4.1667%

25. Cont'd.	11-1-88	Peggy Williamson McCullough	4.1667%	Amoco Production Company	100%	None	Amoco Production Company	4.1667%
	10-5-88	John R. Bowmer, as Executor of the Estate of John S. Bristol & the Estate of Frances C. Bristol	2.7778%	Amoco Production Company	100%	None	Amoco Production Company	2.7778%
	10-5-88	Suzanne B. Kay & David G. Kay (w&h)	2.7778%	Amoco Production Company	100%	None	Amoco Production Company	2.7778%
	10-5-88	Cynthia B. Bowmer	2.7778%	Amoco Production Company	100%	None	Amoco Production Company	2.7778%
	11-12-88	W. C. Duncan, II, as Trustee for Mae Bell Duncan under the will of William Collins	2.0833%	Amoco Production Company	100%	None	Amoco Production Company	2.0833%
	11-12-88	W. C. Duncan, II	2.0833%	Amoco Production Company	100%	None	Amoco Production Company	2.0833%



OIL CONSERVATION DIVISION
RECEIVED

'90 MAR 29 AM 9 21

#8998

T. D. Autry
Division Production Manager

Amoco Production Company

Southern Division
1670 Broadway
P.O. Box 800
Denver, Colorado 80201
303-830-4040

February 21, 1990

Bureau of Land Management
P. O. Box 1449
Santa Fe, NM 87501

Bureau of Land Management
P. O. Box 6770
Albuquerque, NM 87197-6770

New Mexico State Land Office
Oil and Gas Development
P. O. Box 1148
Santa Fe, NM 87501-1148

Oil Conservation Commission
State of New Mexico
P. O. Box 2088
Santa Fe, NM 87501-2088

Office of District Engineer
Bureau of Land Management
P. O. Box 959
Farmington, NM 87401

File: LF- 114-414

Gentlemen:

1990 Plan of Development
Bear Canyon Unit
Rio Arriba County, New Mexico

Amoco Production Company, as Unit Operator, submits for your approval, the attached 1990 Plan of Development (POD) for the Bear Canyon Unit. The subject POD proposes the drilling of no new wells in the unit during 1990. The POD has been approved by working interest owners under the terms of the Unit Operating Agreement.

Please direct any questions regarding this correspondence to Leon Thurmon at (303) 830-4920.

T. D. Autry SFR

T. D. Autry

SFR/pas

Attachments

1990 Plan of Development
Bear Canyon Unit
Rio Arriba County, New Mexico

1989 Operations Summary

The Bear Canyon Unit Well No. 5 was drilled and completed in SW/4, SW/4, Section 12, Township 26N, Range 2W in 1989. The well is incapable of producing in paying quantities and will be plugged and abandoned. Additionally, the Bear Canyon Unit Well No. 3 was deepened to develop the Gallup C-Zone reserves. Both items were proposed, and approved, in the 1989 Plan of Development.

Production Summary

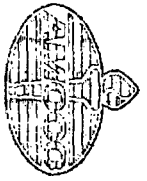
The total, and 1989, Cum production for each well in the unit follows:

<u>Well</u>	1989 Cum Production		Total Cum Production	
	<u>MBO</u>	<u>MMCF</u>	<u>MBO</u>	<u>MMCF</u>
BCU No. 1	116.9	284.7	262.9	311.1
BCU No. 2	54.9	22.9	139.9	37.8
BCU No. 3	54.0	42.6	87.7	48.4
BCU No. 5	--	--	--	--
BCU No. 8	66.4	201.2	72.3	216.0
Simmons Fed. No. 1	45.4	16.4	48.6	17.6

Individual production curves for each well are attached.

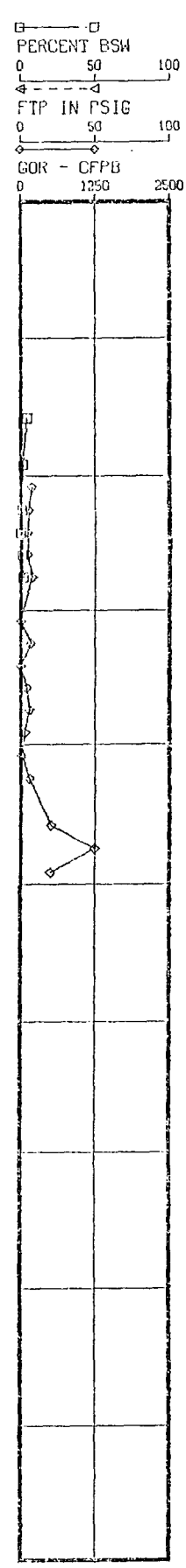
1990 Proposed Drilling Program

No wells are proposed for drilling in the Bear Canyon Unit in 1990.

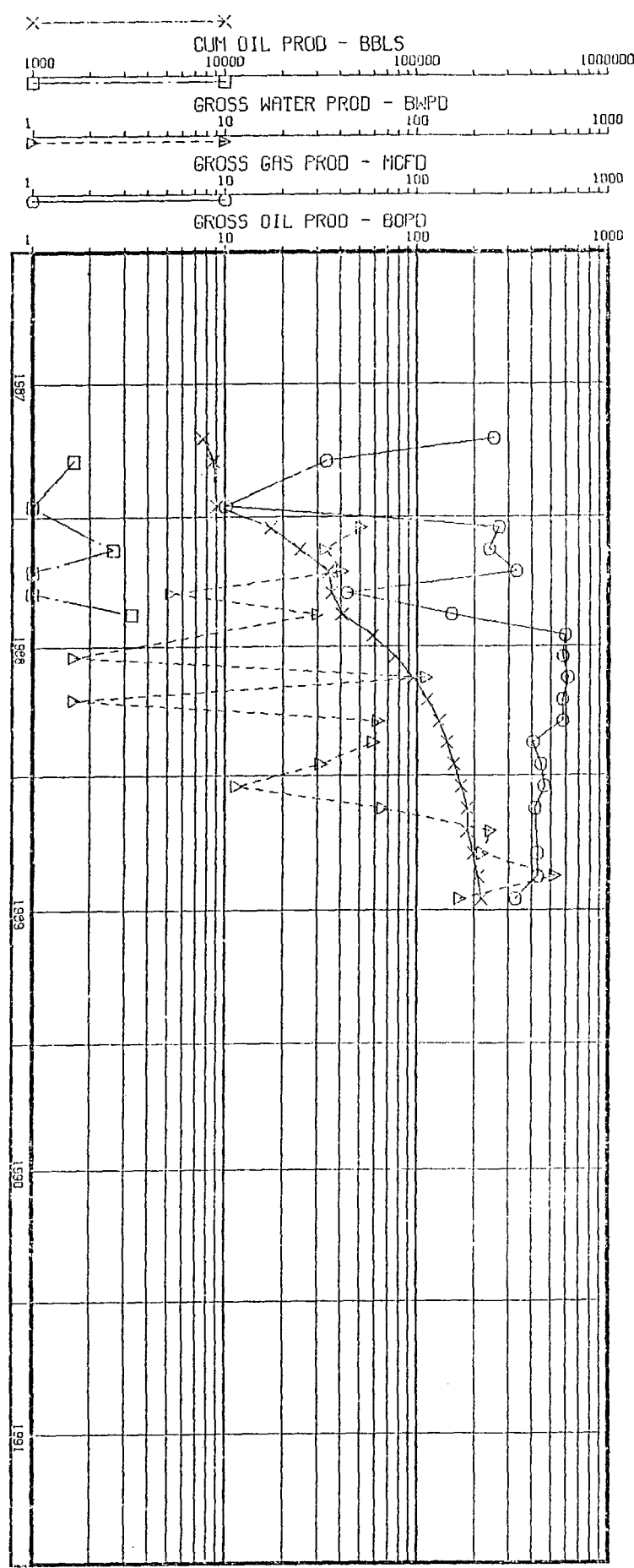


INDUSTRY PRODUCTION DATA RATE-TIME PLOTS

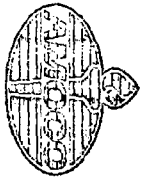
OIL
WELL: BEAR CANYON UNIT 000001
FIELD: GAVILAN MANCOS MK 008030374
OPERATOR: AMOCO PRODUCTION CO 019922
STATE: NM 30 COUNTY: RIO ARriba 039
FIRST PROD LAST PROD 89 06
REQUESTOR: MCGILLIV-M122 LOCATION: DENVER
API NO: 300390000000 GENID: 5W077179
LOCATION: 16G26N 2W
RESERVOIR: MK
COMP DATE: 87 09
TOT. OIL CUM: 212,307
TOT. GAS CUM: 50,693
PERFS:



MAJOR PRODUCT 253 34 10 269 239 331 43 151 595 579 617 578 580 404 443 462 414 0 424 426 339



1990-02-15 TIME REPORT NUMBER 321



OIL

WELL PRODUCTION DATA RATE-TIME PLOTS

GENID: 5W086112

WELL: BEAR CANYON UNIT

000002

API NO: 300392419000

FIELD: GAVILAN MANCOS

MK 008030374

LOCATION: 10C26N 2W

OPERATOR: AMOCO PRODUCTION CO

019922

RESERVOIR: MK

STATE: NM 30

COUNTY: RIO ARriba

039

COMP DATE: 88 02

FIRST PROD LAST PROD 89 06

TOT. OIL CUM:

128,186

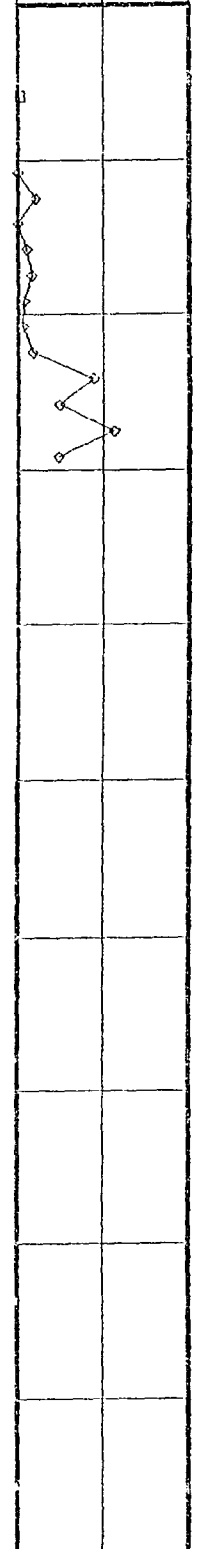
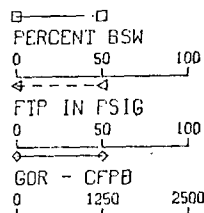
REQUESTOR: MCGILLIV-M122

LOCATION: DENVER

PERFS:

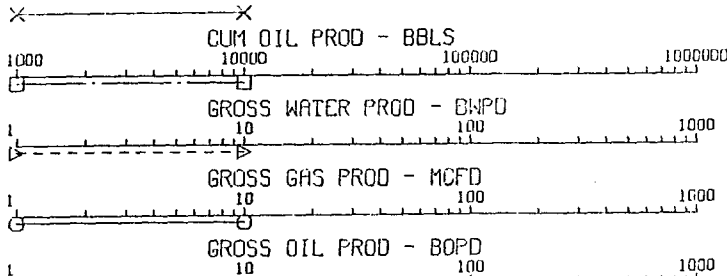
TOT. GAS CUM:

32,282



MAJOR PRODUCT

144
322
100
267
376
393
374
363
254
302
296
243
104
242
257
160



1990-02-15

TIME

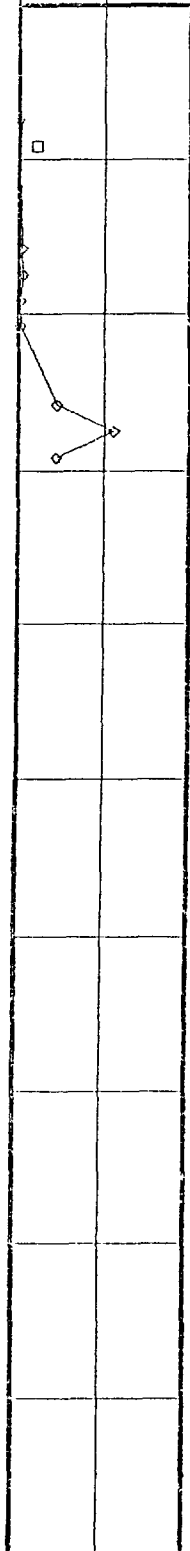
REPORT NUMBER 321



WELL: BEAR CANYON UNIT 000003
FIELD: GAVILAN MANCOS MK 003030374
OPERATOR: AMOCO PRODUCTION CO 019922
STATE: NM 30 COUNTY: RIO ARriba 039
FIRST PROD LAST PROD 89 06
REQUESTOR: MCGILLIV-M122 LOCATION: DENVER

API NO: 300390000000 GENID: SW0B2430
LOCATION: 11L26N 2W
RESERVOIR: MK
COMP DATE: 88 05
TOT. OIL CUM: 55,028
TOT. GAS CUM: 27,373
PERFS:

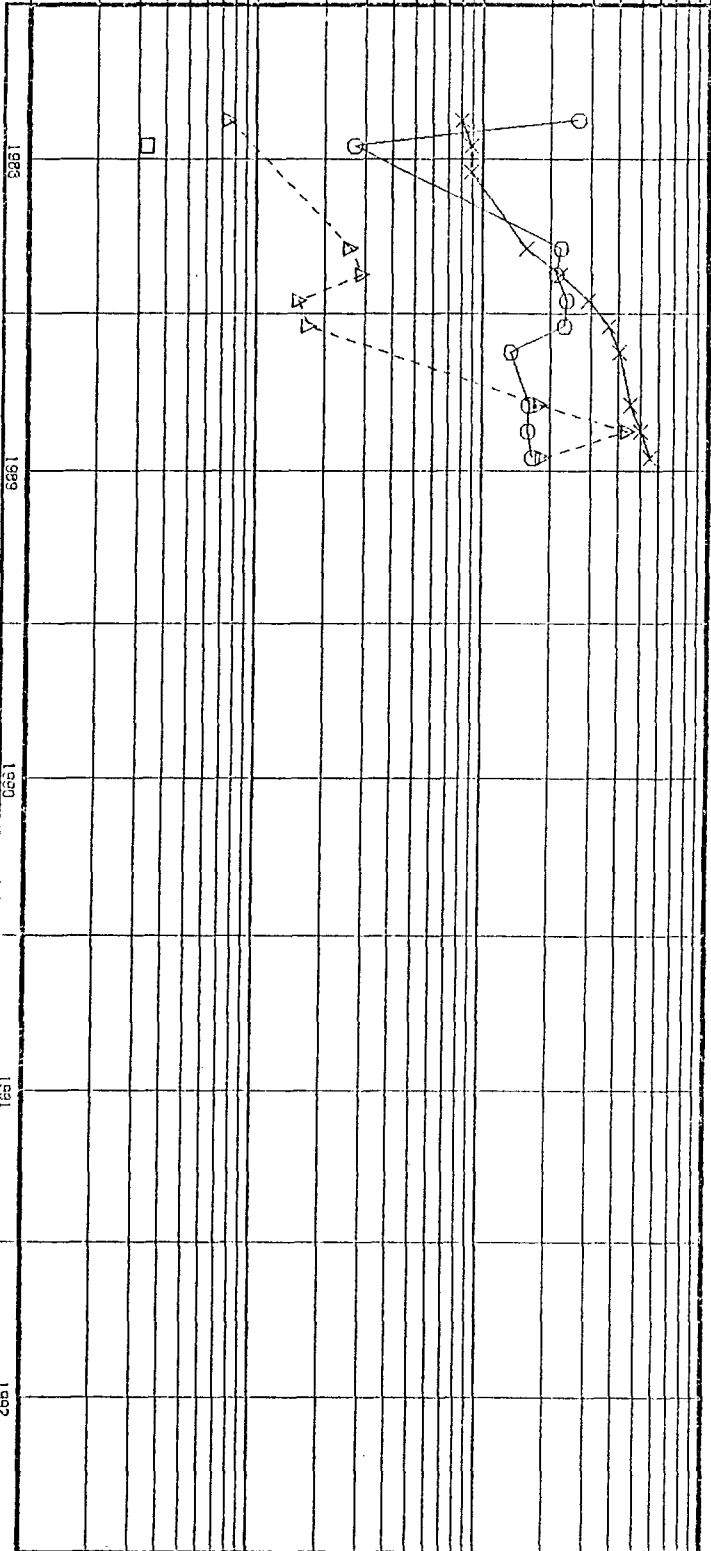
PERCENT BSW
0 50 100
FTP IN PSIG
0 50 100
GOR - CFPB
0 2500 5000



MAJOR PRODUCT

265
27 0
222
211
235
231
133
161
159
167

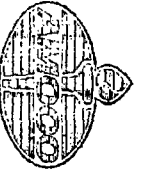
CUM OIL PROD - BBLs
100 1000 10000 100000
GROSS WATER PROD - BWPD
1 10 100 1000
GROSS GAS PROD - MCFD
1 10 100 1000
GROSS OIL PROD - BOPD
1 10 100 1000



1990-02-15

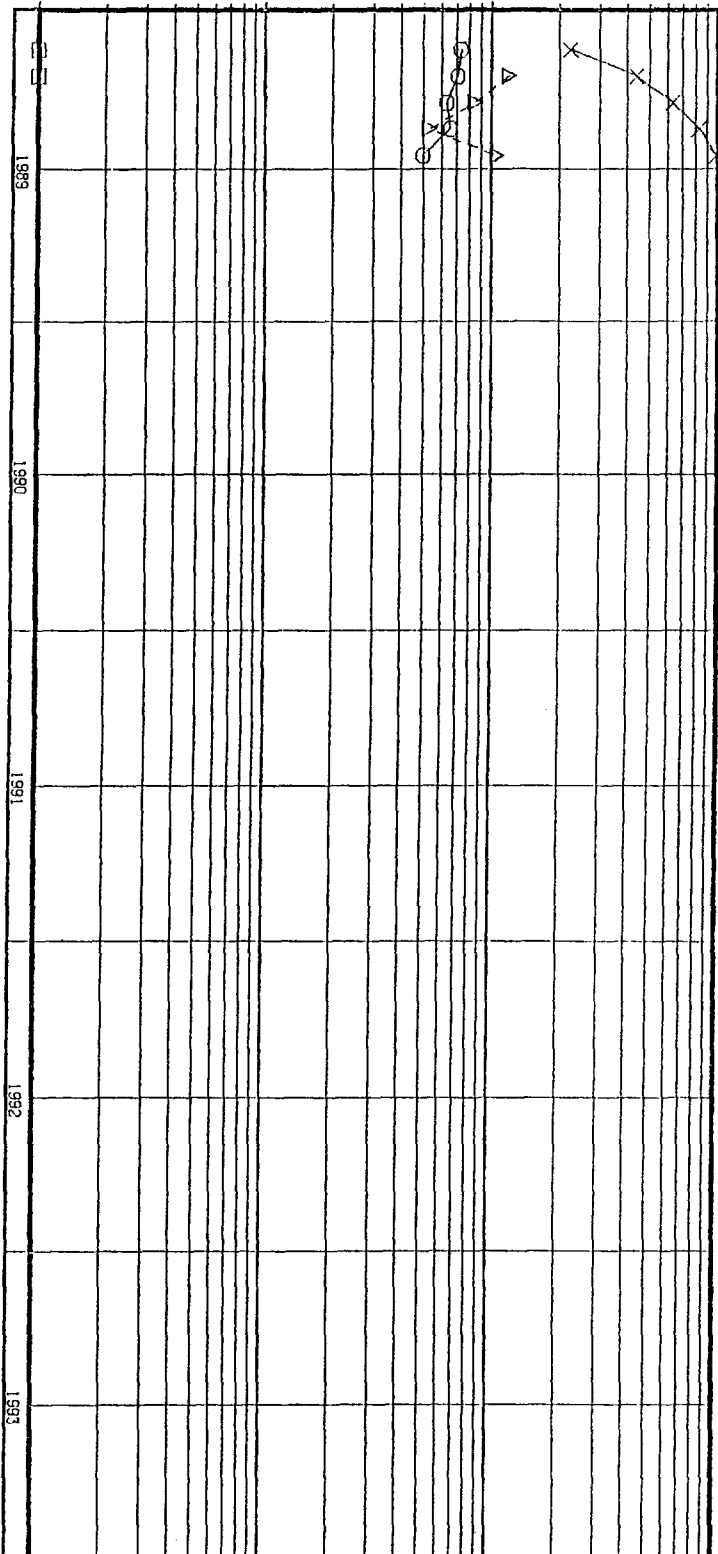
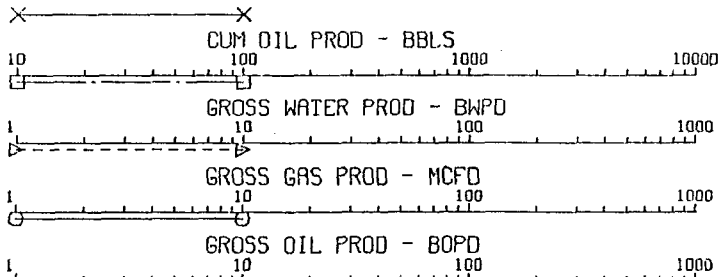
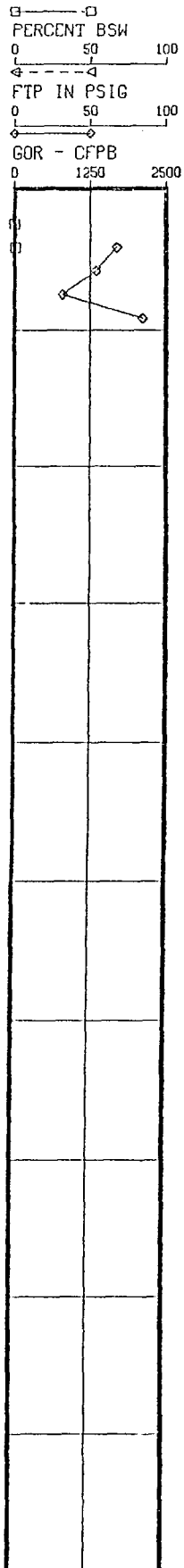
TIME

REPORT NUMBER 321



INDUSTRY PRODUCTION DATA RATE-TIME PLOTS

OIL
WELL: BEAR CANYON UNIT 000004
FIELD: GAVILAN MANCOS MK 008030374
OPERATOR: AMOCO PRODUCTION CO 019922
STATE: NM 30 COUNTY: RIO ARriba 039
FIRST PROD LAST PROD 89 06
REQUESTOR: MCGILLIV-M122 LOCATION: DENVER
API NO: 300390000000 GENID: 5WOB3566
LOCATION: 2M26N 2W
RESERVOIR: MK
COMP DATE: 89 02
TOT. OIL CUM: 9,815
TOT. GAS CUM: 11,015
PERFS:



1990-02-15

TIME

REPORT NUMBER 321



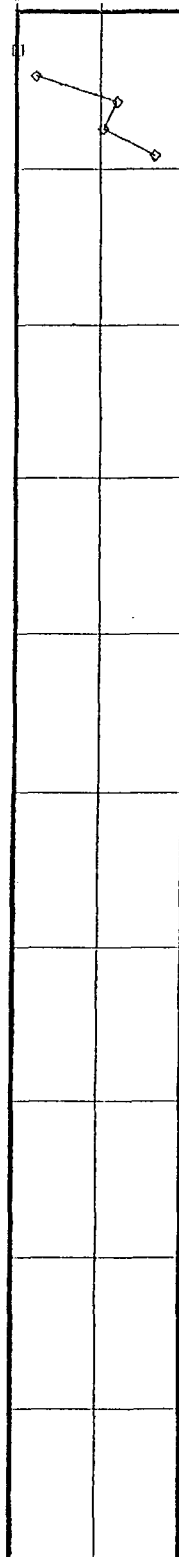
OIL

INDUSTRY PRODUCTION DATA RATE-TIME PLOTS

API NO: 3003900000000 GENID: 5W0B3568

WELL: BEAR CANYON UNIT 000008
FIELD: GAVILAN MANCOS MK 008030374
OPERATOR: AMOCO PRODUCTION CO 019922
STATE: NM 30 COUNTY: RIO ARriba 039
FIRST PROD LAST PROD 89 06
REQUESTOR: MCGILLIV-M122 LOCATION: DENVER
RESERVOIR: MK
COMP DATE: 89 02
TOT. OIL CUM: 30,853
TOT. GAS CUM: 79,000
PERFS:

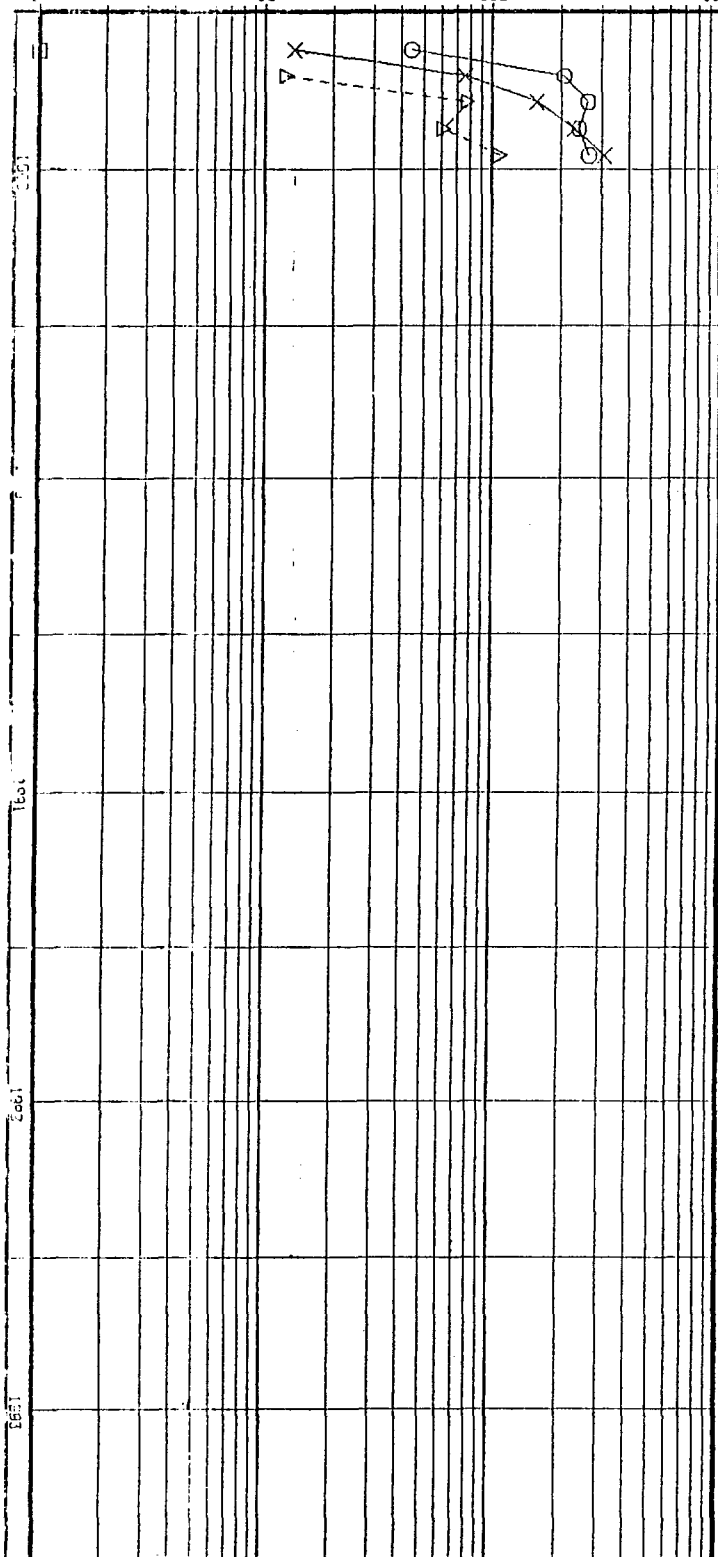
PERCENT BSW
FTP IN PSIG
GOR - CFPB



MAJOR PRODUCT

44
206
261
239
264

CUM OIL PROD - BBLS
GROSS WATER PROD - BWPD
GROSS GAS PROD - MCFD
GROSS OIL PROD - BOPD



TIME

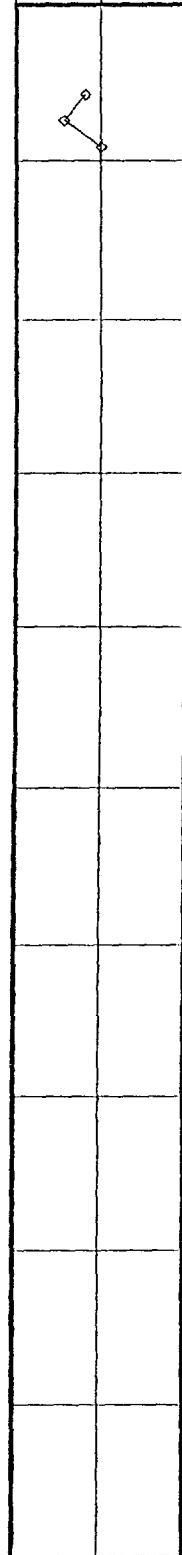
PERCENT BSW



INDUSTRY PRODUCTION DATA RATE-TIME PLOTS

OIL
WELL: SIMMONS FEDERAL 000001
FIELD: GAVILAN MANCOS MK 008030374
OPERATOR: AMOCO PRODUCTION CO 019922
STATE: NM 30 COUNTY: RIO ARriba 039
FIRST PROD LAST PROD 89 06
REQUESTOR: MCGILLIV-M122 LOCATION: DENVER
API NO: 300390000000 GENID: 5WOB3567
LOCATION: 3F26N 2W
RESERVOIR: MK
COMP DATE: 89 02
TOT. OIL CUM: 18,255
TOT. GAS CUM: 5,452
PERFS:

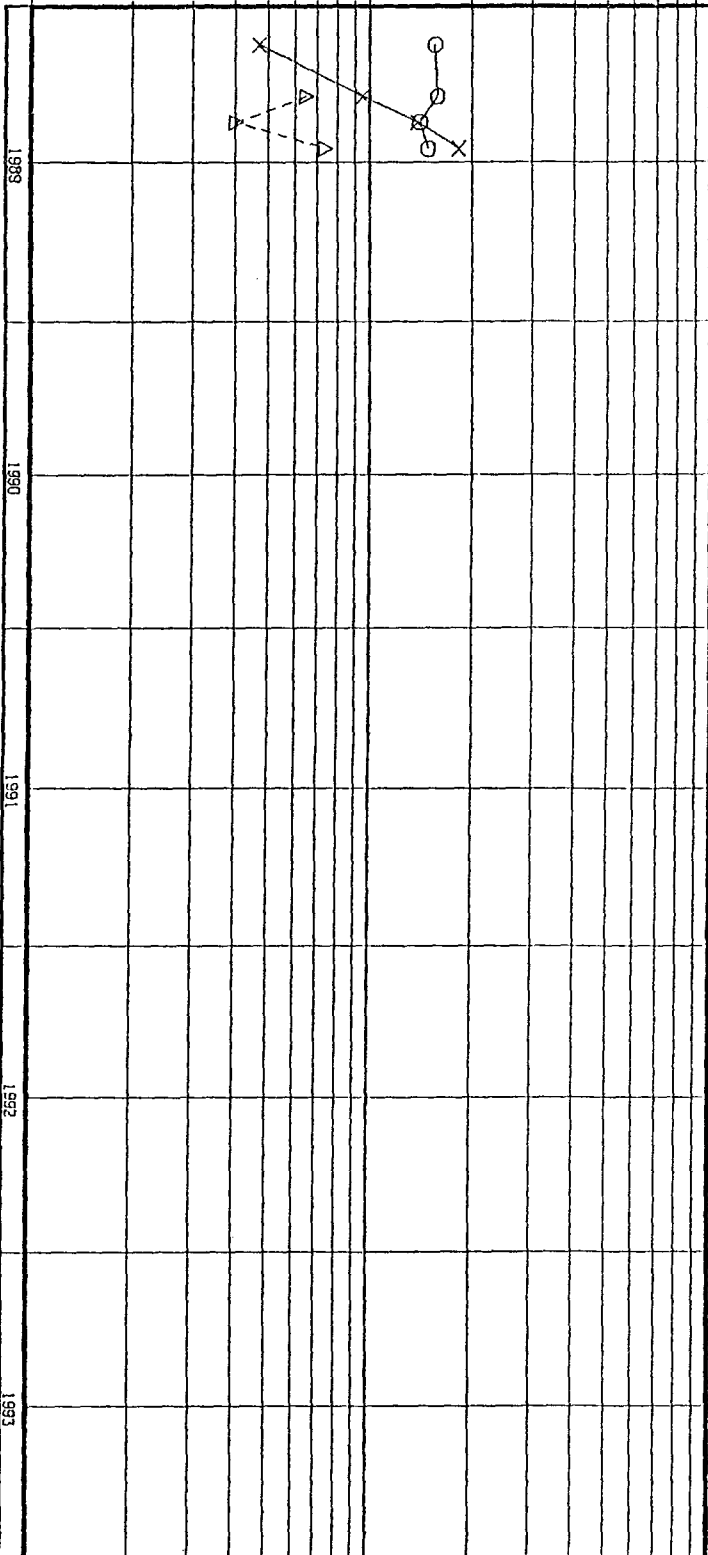
PERCENT BSW
0 50 100
FTP IN PSIG
0 50 100
GOR - CFPB
0 500 1000



MAJOR PRODUCT

155
158
140
148

CUM OIL PROD - BBLS
1000 10000 100000
GROSS WATER PROD - BWPB
1 10 100
GROSS GAS PROD - MCFD
10 100 1000
GROSS OIL PROD - BOPD
10 100 1000



1990-02-15

TIME

REPORT NUMBER 321



INDUSTRY PRODUCTION DATA RATE-TIME PLOTS

OIL

WELL: SUMMARY OF WELLS

FIELD: GAVILAN MANCOS

MK

OPERATOR: AMOCO PRODUCTION CO

STATE: NM 30

COUNTY: RIO ARriba

FIRST PROD LAST PROD 89 06

REQUESTOR: MCGILLIV-M122

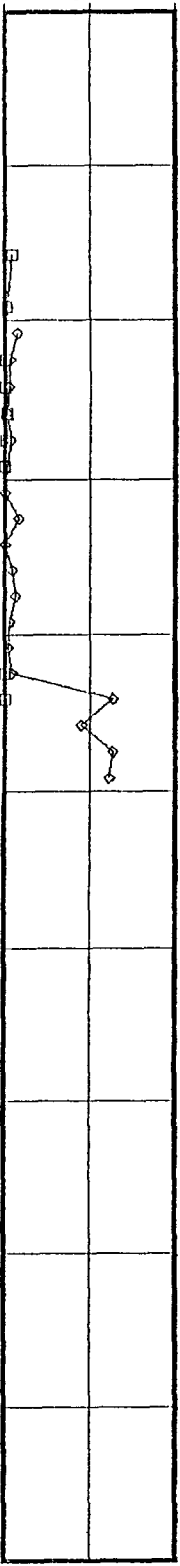
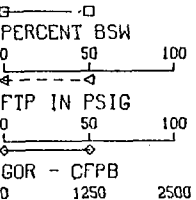
LOCATION: DENVER

PERFS:

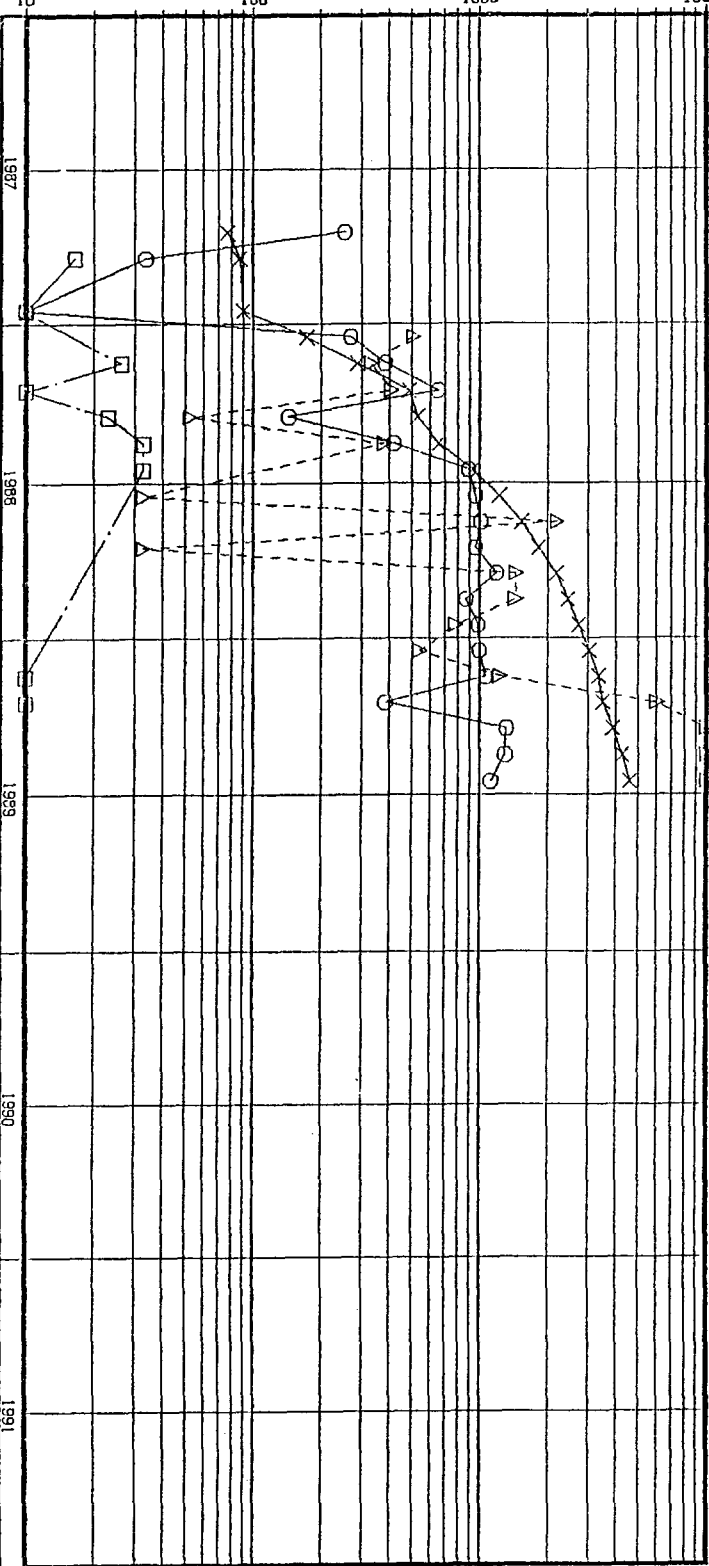
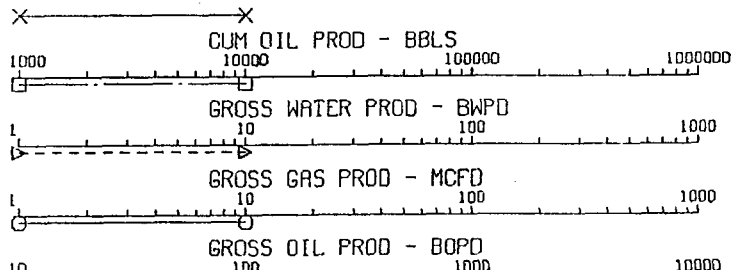
TOT. OIL CUM: 460,444

TOT. GAS CUM: 205,815

PROD. WELLS



253 34 10 269 383 653 143 416 890 955 1010 951 1185 868 980 988 1062 383 1309 1287 1118

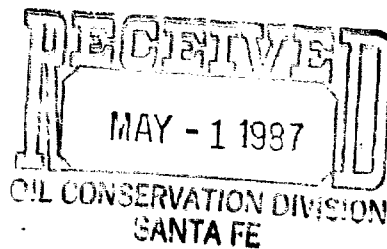


1990-02-15

TIME

REPORT NUMBER 321

Bureau of Land Management
Minerals Division
435 Montano NE
Albuquerque, NM 87107



APR 28 1987

Bear Canyon (UA)
3180 (015)

Amoco Production Company
ATTN: Doug Broadfoot
P.O. Box 800
Denver, CO 80201

Gentlemen:

An approved copy of the Bear Canyon Unit Agreement, Rio Arriba County, New Mexico is enclosed. The Agreement has been assigned No. 14-08-0001-19597 and is effective the same date as approved.

You are requested to furnish all interested principles with appropriate evidence of this approval.

If you have any questions, please contact Robert Kent at the above address or call (505) 761-4503.

Sincerely,

(Orig. Signed)- GARY A. STEPHENS

For District Manager

Enclosure

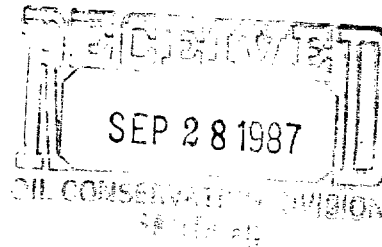
cc:
✓ NMOCD
NM-943C
NM-016

015:RKent:klm:4-27-87:3028M

8998



Robert B. Wilson
Division Land Manager



Amoco Production Company
Southern Division
1670 Broadway
P.O. Box 800
Denver, Colorado 80201
303-830-4040

September 24, 1987

United States Department of the Interior
Bureau of Land Management
435 Montano N.E.
Albuquerque, NM 87107

Attention: Mr. Gary Stephens

State of New Mexico
Oil Conservation Division
Box 2088
Santa Fe, NM 87504

Attention: Mr. Michael Stogner

Gentlemen:

Bear Canyon Unit
Federal No. 14-08-0001-19597
NMOCD Case No. 8998 (OCD Order No. R-8350)
Township 26 North, Range 2 West, N.M.P.M. (Part)
Rio Arriba County, New Mexico

Amoco Production Company is currently completing the Bear Canyon Unit Well No. 1 (NE/4 Section 15-T26N-R2W) as a commercial oil discovery. This well has been drilled in accordance with Article 9. Drilling to Discovery of the Bear Canyon Unit Agreement, which was approved effective April 28, 1987.

We are currently permitting the following two new well locations in the Bear Canyon Unit area:

1. Bear Canyon Unit Well No. 2
T26N, R2W, N.M.P.M.
Section 10: 1830' FWL x 990' FNL
2. Bear Canyon Unit Well No. 3
T26N, R2W, N.M.P.M.
Section 11: 1650' FWL x 1650' FSL

Bear Canyon Unit
September 24, 1987
Page 2

Amoco hereby requests your office approve the drilling of these two wells before we file our plan of development as required under Article 10. Plan of Further Development and Operation of the Unit Agreement. We hope to commence drilling the Bear Canyon Unit Well No. 2 and possibly the Bear Canyon Unit Well No. 3 (weather permitting) before November 1, 1987. A Plan of Development for calendar year 1988 will be submitted for approval on or before March 1, 1988.

Please notify the undersigned in writing at your earliest convenience if you are willing to approve the drilling of the aforementioned wells at this time. If you have any questions, feel free to call at area code (303) 830-4899.

Thank you for considering this request.

Very truly yours,



Douglas Broadfoot
Landman

DEB/lmm

cc:

Meridian Oil Inc.
3535 East 30th Street
P. O. Box 4289
Farmington, NM 87499

Attn: Mr. A. E. Alexander
District Land Mgr.

Dugan Production Corporation
709 Bloomfield Road
P. O. Box 208
Farmington, NM 87499-0208

Attn: Mr. Richard Corcoran
Landman

Hixon Development Company
P. O. Box 2810
Farmington, NM 87499

Attn: Mr. Aldrich L. Kuchera
President

Jerome P. McHugh & Associates
650 South Cherry
Suite 1225
Denver, CO 80222

Attn: Mr. Kent C. Craig
Landman

Bear Canyon Unit
September 24, 1987
Page 3

Roberts & Murphy, Inc.
P. O. Box 7125
Shreveport, LA 71107

Attn: Mr. Brad Cummings
Landman

LTR961

UnitSource INCORPORATED

BRAD W. HENTSCHEL
PAUL S. CONNER
BONITA L. LIMPUS

UNITIZATION

8998

September 6, 1988

The Oil Conservation Division of New Mexico
P O Box 2088
Sante Fe, New Mexico 87504-2088

RE: Application for the Initial
Gallup Participating Area "A"
for the Bear Canyon Unit Area,
Rio Arriba County, New Mexico

*D- Unit letter
Tux R4*

Gentlemen:

Enclosed for your review and approval please find two (2) copies of the application for a participating area for the above referenced unit area. If you require further data please feel free to contact me and I see that you are provided with the additional materials.

Very truly yours,

UNITSOURCE INCORPORATED

Paul S. Conner
Paul S. Conner

enclosure

*9-9-88
OK*