



MAY 23 2018 PM 02:59

R-152

MAY 8, 2018

**To: Affected Parties of Big Eddy Unit Drill Island 9
Affected Parties of War Chief Development Area
(see attached address list)**

**Re: Designation of Big Eddy Unit Drill Island 9
War Chief Development Area
T21S-R30E-SECTION 22,23,24**

To Whom It May Concern,

Trove Energy has proposed a Development Area in the Secretary's Potash Area that may affect your leasehold and/or surface estate/permit. Please see the enclosed plat for the location of the BLM approved Big Eddy Unit Drill Island 9, proposed Development Area, and Trove Energy's initial development wells. Enclosed with this letter are Trove's State of New Mexico Form C-102s, Well Location and Acreage Dedication Plats for each of Trove's initial development wells, and a survey of the approved Big Eddy Unit Drill Island 9 Drill Island.

This letter serves as notice of the proposed action. You have thirty (30) calendar days from receipt of this letter to contact the BLM if you would like to express interest in collaborating with the proposal or protesting the proposal. If you would like to collaborate with or protest the establishment of the War Chief Development Area, please respond to James Rutley (jrutley@blm.gov) at the BLM, Carlsbad Field Office, 620 E. Greene Street, Carlsbad, NM 88220.

Please be aware that once a Development Area has been established it could affect your operating rights; your timely participation in this process is required. If you have any questions or concerns I can be reached by the contact information contained in the letterhead of this letter.

Most Respectful,

Roy Barton III

CFO Trove Energy

512-293-5493

War Chief Development Area**Affected Parties**

<u>Name</u>	<u>Type</u>	<u>Street</u>	<u>City</u>	<u>State</u>	<u>Postal Code</u>
Bureau of Land Management	Regulatory	620 East Green Street	Carlsbad	NM	88220
State of New Mexico	Affected Surface/Grazing Lease Owner/Regulatory	310 Old Santa Fe Trail	Santa Fe	NM	87501
Keystone OG NM LLC	Affected Operator/Lessee	201 Main St STE 2700	Fort Worth	TX	76102-3131
Conoco Phillips Co	Affected Operator/Lessee	PO Box 7500	Bartlesville	OK	74005-7500
Intrepid Potash NM LLC	Affected Potash Lessee	1996 Potash Mines Road	Carlsbad	NM	88220
Mosaic Company	Affected Potash Lessee	PO Box 71	Carlsbad	NM	88220
New Mexico Oil Conservation Division	Regulatory	1220 S St. Francis Drive	Santa Fe	NM	87505
XTO Energy, Inc	Affected Operator/Lessee	6401 Holiday Hill Road, Bldg 5	Midland	TX	79707
Oxy USA Inc	Affected Operator/Lessee	PO Box 27570	Houston	TX	77227

Trove Energy

War Chief Development Area

Legend

- BEU Drill Island 9
- Sections
- T21S R30E
- War Chief Development Area
- War Chief Notification Area

NM T21S R30E



Google Earth

2018 Google

Earth Point

2 mi

DISTRICT I
1625 N. French Dr., Hobbs, NM 88240
Phone (575) 393-6161 Fax: (575) 393-0720

DISTRICT II
811 S. First St., Artesia, NM 88210
Phone (575) 748-1283 Fax: (575) 748-9720

DISTRICT III
1000 Rio Brazos Rd., Aztec, NM 87410
Phone (505) 334-6178 Fax: (505) 334-6170

DISTRICT IV
1220 S. St. Francis Dr., Santa Fe, NM 87505
Phone (505) 478-3333 Fax: (505) 478-3462

State of New Mexico
Energy, Minerals and Natural Resources Department

Form C-102
Revised August 1, 2011

Submit one copy to appropriate
District Office

OIL CONSERVATION DIVISION
1220 South St. Francis Dr.
Santa Fe, New Mexico 87505

WELL LOCATION AND ACREAGE DEDICATION PLAT

☐ AMENDED REPORT

API Number		Pool Code	Pool Name
Property Code	Property Name CARNE MUERTO FED B		Well Number 4H
OGRID No.	Operator Name TROVE ENERGY, LLC		Elevation 3148'

Surface Location

UL or lot No.	Section	Township	Range	Lot Idn	Feet from the	SOUTH/South line	Feet from the	East/West line	County
P	21	21 S	30 E		220	SOUTH	555	EAST	EDDY

Bottom Hole Location If Different From Surface

UL or lot No.	Section	Township	Range	Lot Idn	Feet from the	SOUTH/South line	Feet from the	East/West line	County
I	24	21 S	30 E		1980	SOUTH	330	EAST	EDDY

Dedicated Acres	Joint or Infill	Consolidation Code	Order No.

NO ALLOWABLE WILL BE ASSIGNED TO THIS COMPLETION UNTIL ALL INTERESTS HAVE BEEN CONSOLIDATED
OR A NON-STANDARD UNIT HAS BEEN APPROVED BY THE DIVISION

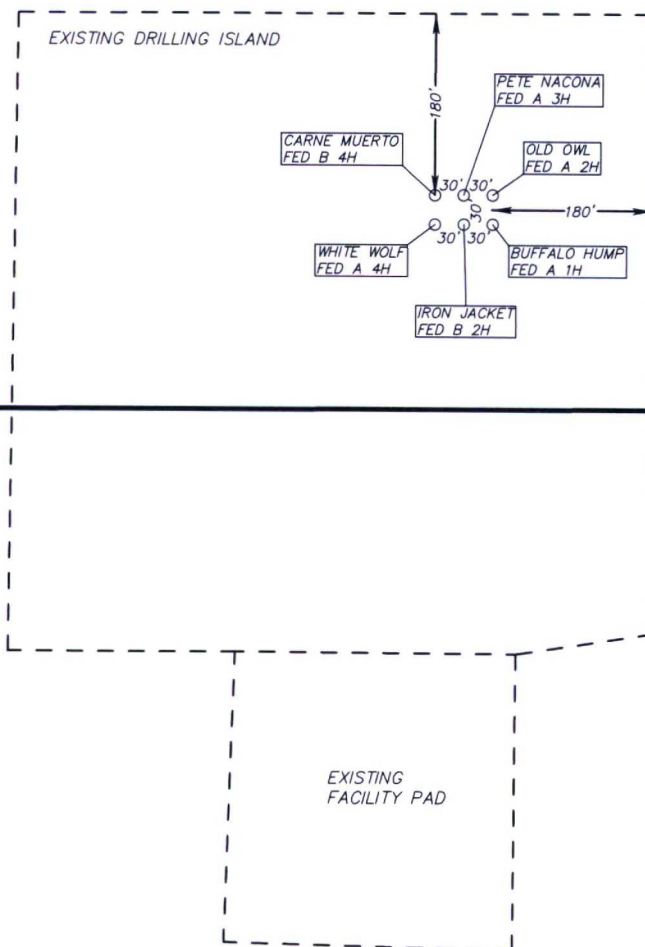
<p>OPERATOR CERTIFICATION</p> <p>I hereby certify that the information contained herein is true and complete to the best of my knowledge and belief, and that this organization either owns a working interest or unLEASED mineral interest in the land including the proposed bottom hole location or has a right to drill this well at this location pursuant to a contract with an owner of such a mineral or working interest, or to a voluntary pooling agreement or a compulsory pooling order heretofore entered by the division.</p> <p>Signature _____ Date _____</p> <p>Printed Name _____</p> <p>Email Address _____</p>	
<p>SURVEYOR CERTIFICATION</p> <p>I hereby certify that the well location shown on this plat was plotted from field notes of actual surveys made by me or under my supervision and that the same is true and correct to the best of my belief.</p> <p>DATE SURVEYED: MAR 13, 2018</p> <p>Signature & Seal of Professional Surveyor: [Seal: GARY L. JONES, 7977, PROFESSIONAL SURVEYOR, NEW MEXICO]</p> <p>Certificate No.: 7977</p> <p>Basin: [Blank]</p> <p>Scale: 1" = 4000'</p> <p>WO Num.: 33584</p>	

SURFACE LOCATION
Lat - N 32.458121°
Long - W 103.878711°
NMSPCE- N 530694.0
E 681560.3
(NAD-83)

BOTTOM HOLE LOCATION
Lat - N 32.462883°
Long - W 103.826612°
NMSPCE- N 532498.7
E 697621.7
(NAD-83)

The map displays a grid of sections 21, 22, 23, and 24 in Township 21 S, Range 30 E. The surface location is marked with a red dot in Section 21, 220 feet from the south line and 555 feet from the east line. The bottom hole location is marked with a red dot in Section 24, 1980 feet from the south line and 330 feet from the east line. Coordinates for the corners of the sections are provided. A scale bar at the bottom indicates 0 to 8000 feet.

**SECTION 21, TOWNSHIP 21 SOUTH, RANGE 30 EAST. N.M.P.M.,
EDDY COUNTY, NEW MEXICO.**

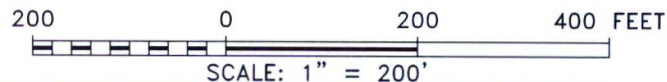


SECTION 21
SECTION 28

TROVE ENERGY, LLC
CARNE MUERTO FED B 4H
ELEV. - 3148'

Lat - N 32.458121°
Long - W 103.878711°
NMSPCE- N 530694.0
E 681560.3
(NAD-83)

CARLSBAD, NM IS ±20 MILES TO THE WEST-SOUTHWEST OF LOCATION.



TROVE ENERGY, LLC

REF: CARNE MUERTO FED B 4H / WELL PAD TOPO

THE CARNE MUERTO FED B 4H LOCATED 220' FROM
THE SOUTH LINE AND 555' FROM THE EAST LINE OF
SECTION 21, TOWNSHIP 21 SOUTH, RANGE 30 EAST.

N.M.P.M., EDDY COUNTY, NEW MEXICO.



P.O. Box 1786 (575) 393-7316 - Office
1120 N. West County Rd. (575) 392-2206 - Fax
Hobbs, New Mexico 88241 basin-surveys.com

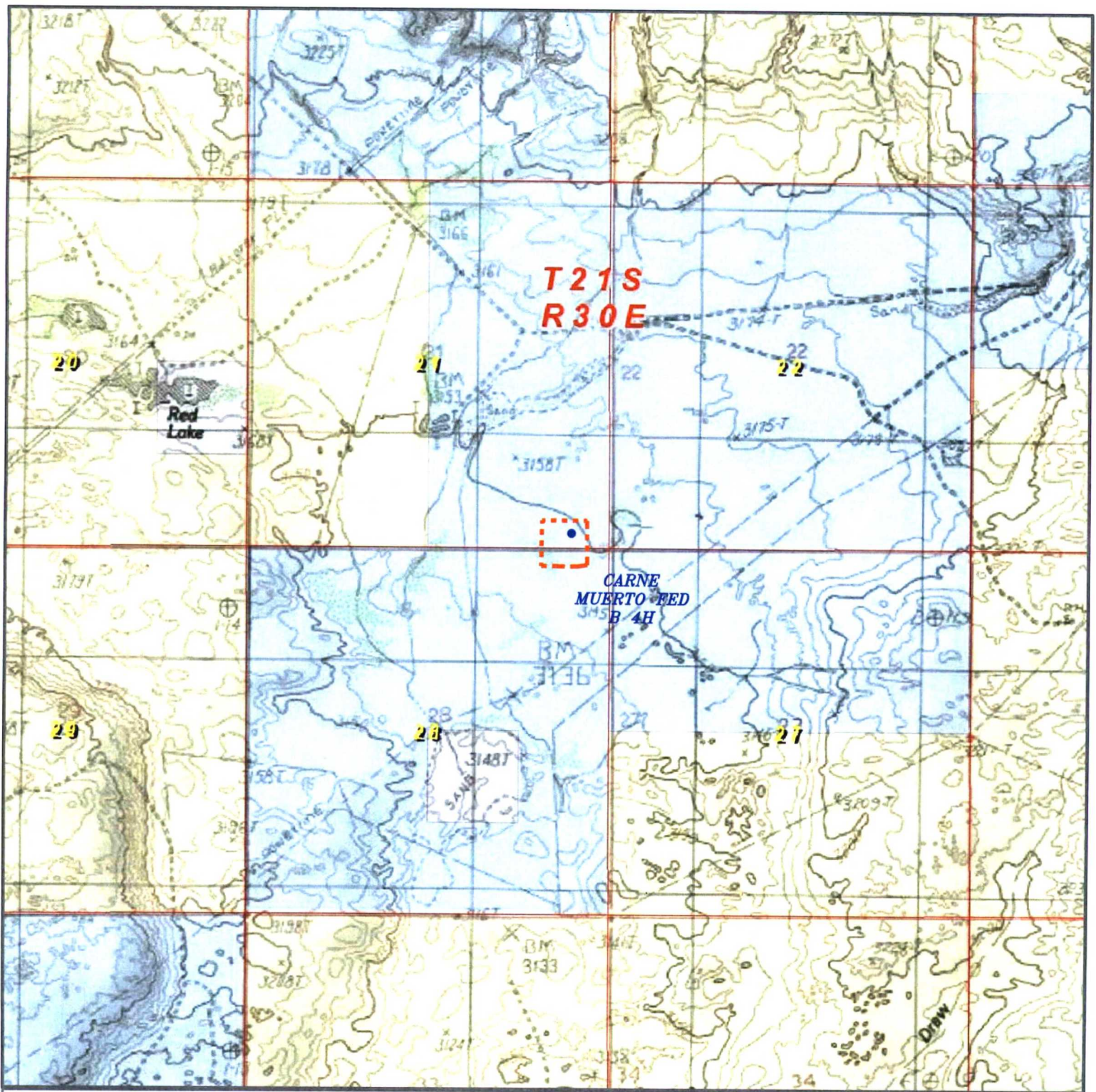
W.O. Number: 33584

Drawn By: J GOAD

Date: 3-13-2018

Survey Date: 3-5-2018

Sheet 1 of 1 Sheets



CARNE MUERTO FED B 4H

*Located 220' FSL & 555' FEL
Section 21, Township 21 South, Range 30 East,
N.M.P.M., Eddy County, New Mexico.*



P.O. Box 1786
1120 N. West County Rd.
Hobbs, New Mexico 88241
(575) 393-7316 - Office
(575) 392-2206 - Fax
basinsurveys.com

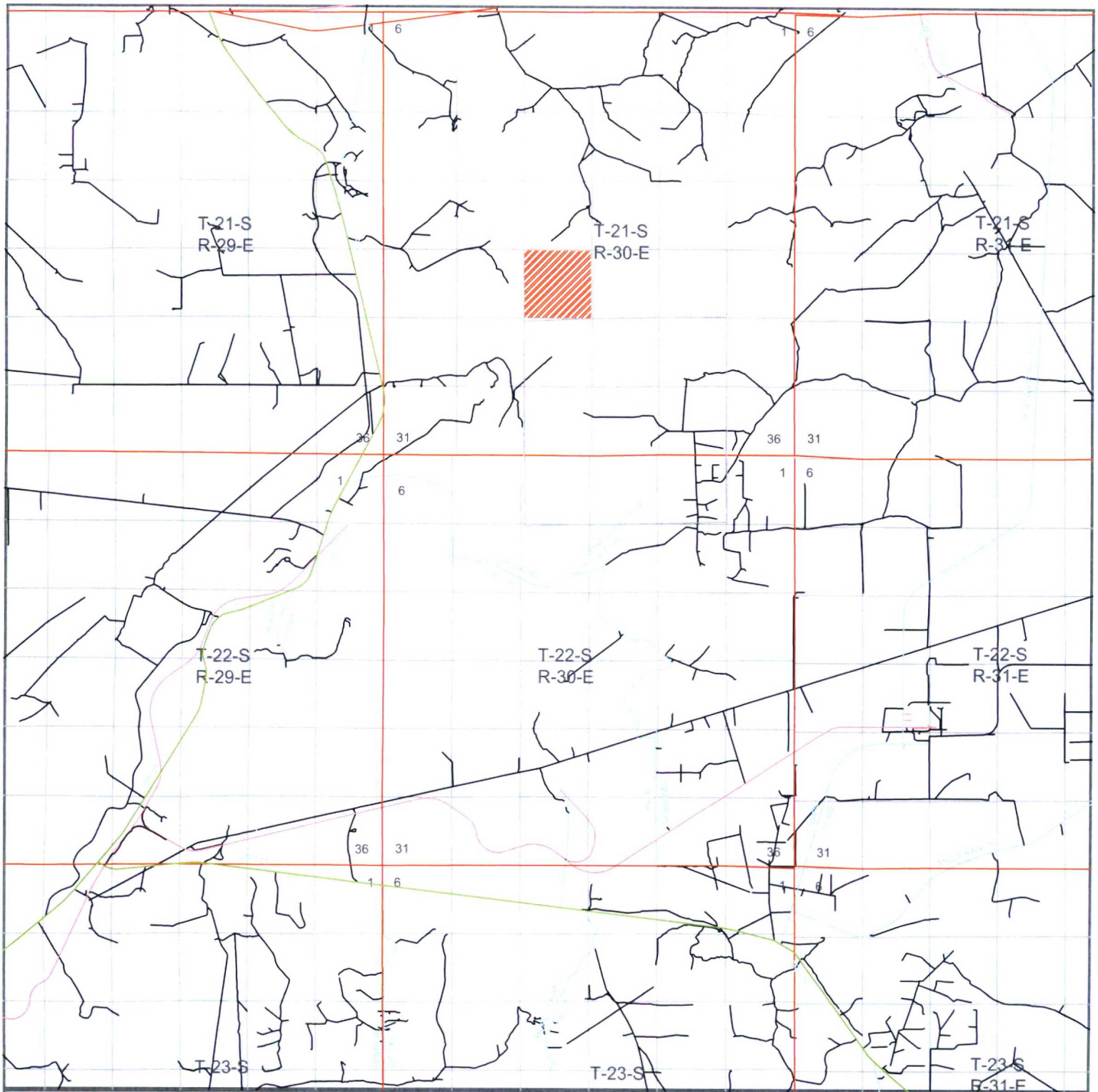
W.O. Number: JG - 33584

Scale: 1" = 2000'

YELLOW TINT - USA LAND
BLUE TINT - STATE LAND
NATURAL COLOR - FEE LAND

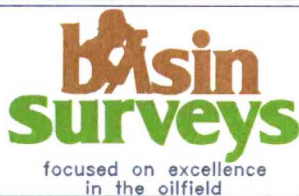


**TROVE
ENERGY,
LLC**



CARNE MUERTO FED B 4H

*Located 220' FSL & 555' FEL
Section 21, Township 21 South, Range 30 East,
N.M.P.M., Eddy County, New Mexico.*



P.O. Box 1786
1120 N. West County Rd.
Hobbs, New Mexico 88241
(575) 393-7316 - Office
(575) 392-2206 - Fax
basinsurveys.com

W.O. Number: JG - 33584

Scale: 1" = 2000'

YELLOW TINT - USA LAND
BLUE TINT - STATE LAND
NATURAL COLOR - FEE LAND

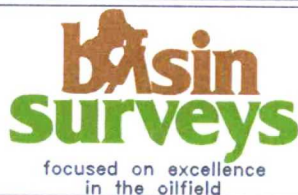


**TROVE
ENERGY,
LLC**



CARNE MUERTO FED B 4H

*Located 220' FSL & 555' FEL
Section 21, Township 21 South, Range 30 East,
N.M.P.M., Eddy County, New Mexico.*



P.O. Box 1786
1120 N. West County Rd.
Hobbs, New Mexico 88241
(575) 393-7316 - Office
(575) 392-2206 - Fax
basinsurveys.com

W.O. Number: JG - 33584

Scale: 1" = 2000'

YELLOW TINT - USA LAND
BLUE TINT - STATE LAND
NATURAL COLOR - FEE LAND



**TROVE
ENERGY,
LLC**

DISTRICT I
1625 N. French Dr., Hobbs, NM 88240
Phone (575) 393-6161 Fax: (575) 393-0720

DISTRICT II
811 S. First St., Artesia, NM 88210
Phone (575) 748-1283 Fax: (575) 748-9720

DISTRICT III
1000 Rio Brazos Rd., Aztec, NM 87410
Phone (505) 334-6178 Fax: (505) 334-6170

DISTRICT IV
1220 S. St. Francis Dr., Santa Fe, NM 87505
Phone (505) 476-3333 Fax: (505) 476-3462

State of New Mexico
Energy, Minerals and Natural Resources Department

Form C-102
Revised August 1, 2011

Submit one copy to appropriate
District Office

OIL CONSERVATION DIVISION
1220 South St. Francis Dr.
Santa Fe, New Mexico 87505

WELL LOCATION AND ACREAGE DEDICATION PLAT

☐ AMENDED REPORT

API Number		Pool Code	Pool Name
Property Code	Property Name BUFFALO HUMP FED A		Well Number 1H
GRID No.	Operator Name TROVE ENERGY, LLC		Elevation 3148'

Surface Location

UL or lot No.	Section	Township	Range	Lot Idn	Feet from the	SOUTH/South line	Feet from the	East/West line	County
P	21	21 S	30 E		190	SOUTH	495	EAST	EDDY

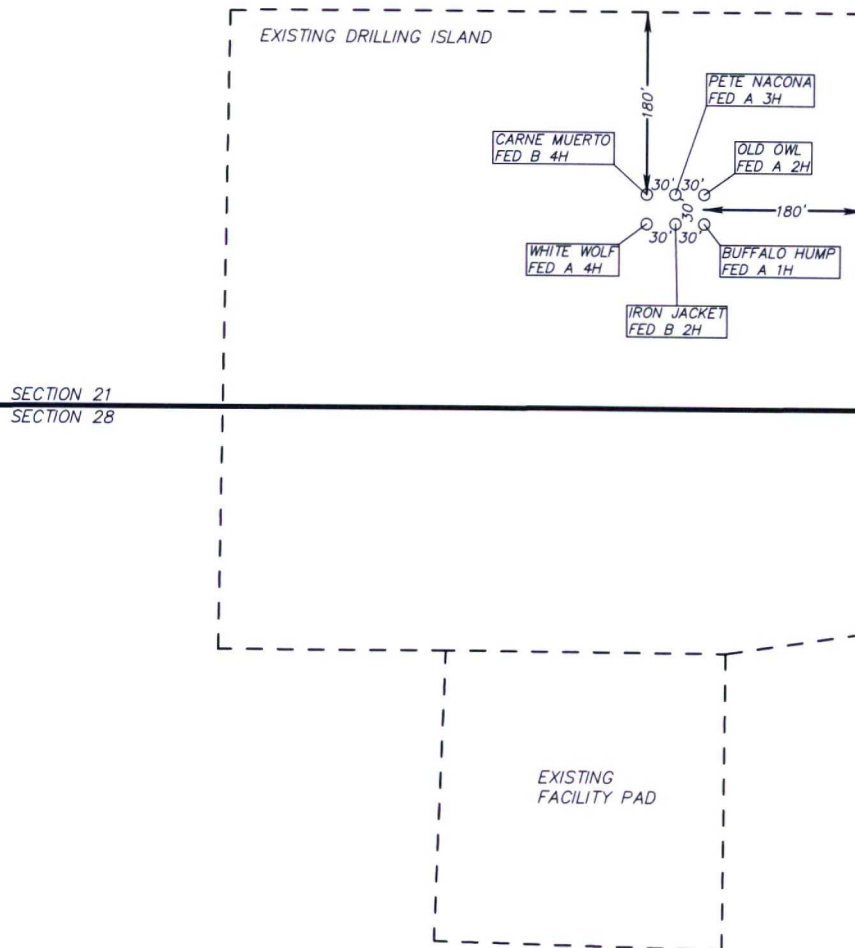
Bottom Hole Location If Different From Surface

UL or lot No.	Section	Township	Range	Lot Idn	Feet from the	SOUTH/South line	Feet from the	East/West line	County
P	24	21 S	30 E		660	SOUTH	330	EAST	EDDY
Dedicated Acres	Joint or Infill	Consolidation Code	Order No.						

NO ALLOWABLE WILL BE ASSIGNED TO THIS COMPLETION UNTIL ALL INTERESTS HAVE BEEN CONSOLIDATED
OR A NON-STANDARD UNIT HAS BEEN APPROVED BY THE DIVISION

<p>SURFACE LOCATION Lat - N 32.458038° Long - W 103.878518° NAD83- N 530664.2 E 681620.2 (NAD-83)</p> <p>BOTTOM HOLE LOCATION Lat - N 32.459256° Long - W 103.826617° NAD83- N 531179.0 E 697626.5 (NAD-83)</p>	<p>OPERATOR CERTIFICATION</p> <p>I hereby certify that the information contained herein is true and complete to the best of my knowledge and belief, and that this organization either owns a working interest or unLEASED mineral interest in the land including the proposed bottom hole location or has a right to drill this well at this location pursuant to a contract with an owner of such a mineral or working interest, or to a voluntary pooling agreement or a compulsory pooling order heretofore entered by the division.</p> <p>Signature _____ Date _____</p> <p>Printed Name _____</p> <p>Email Address _____</p>
	<p>SURVEYOR CERTIFICATION</p> <p>I hereby certify that the well location shown on this plat was plotted from field notes of actual surveys made by me or under my supervision and that the same is true and correct to the best of my belief.</p> <p>MARCH 13 2018 NEW MEXICO Professional Surveyor 7977</p> <p>Date Surveyed _____</p> <p>Signature & Seal of Professional Surveyor _____</p> <p>Certificate No. Gary L. Lopes 7977 BASIN SERVICES</p>
	<p>0' 2000' 4000' 6000' 8000'</p> <p>SCALE: 1" = 4000'</p> <p>WO Num.: 33569</p>

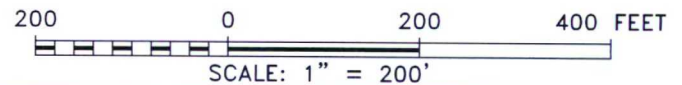
**SECTION 21, TOWNSHIP 21 SOUTH, RANGE 30 EAST. N.M.P.M.,
EDDY COUNTY, NEW MEXICO.**



TROVE ENERGY, LLC
BUFFALO HUMP FED A 1H
ELEV. - 3148'

Lat - N 32.458038°
Long - W 103.878518°
NMSPCE- N 530664.2
E 681620.2
(NAD-83)

CARLSBAD, NM IS ±20 MILES TO THE WEST-SOUTHWEST OF LOCATION.



TROVE ENERGY, LLC

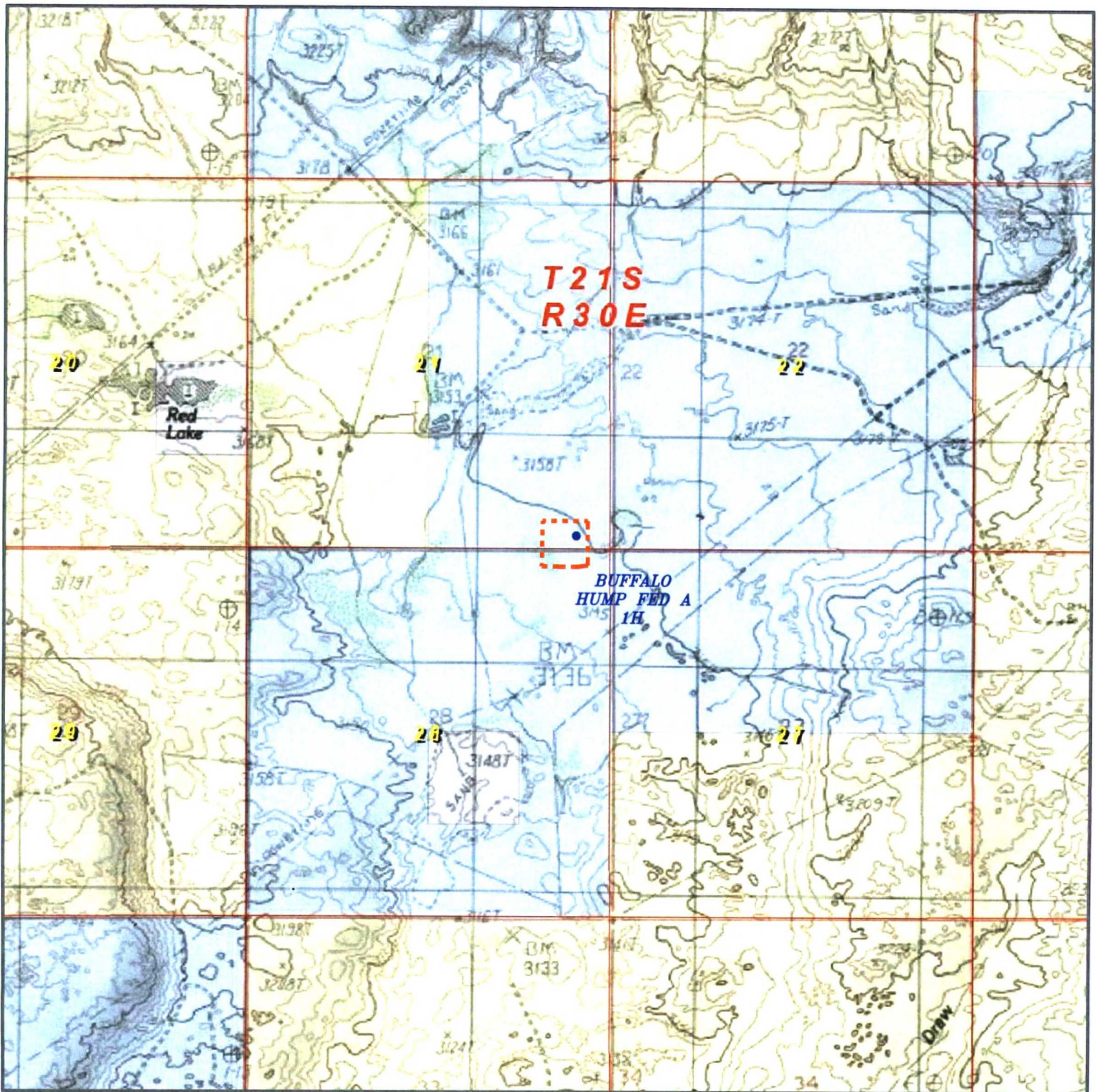
REF: BUFFALO HUMP FED A 1H / WELL PAD TOPO

THE BUFFALO HUMP FED A 1H LOCATED 190' FROM
THE SOUTH LINE AND 495' FROM THE EAST LINE OF
SECTION 21, TOWNSHIP 21 SOUTH, RANGE 30 EAST.

N.M.P.M., EDDY COUNTY, NEW MEXICO.



P.O. Box 1786 (575) 393-7316 - Office
1120 N. West County Rd. (575) 392-2206 - Fax
Hobbs, New Mexico 88241 basinsurveys.com



BUFFALO HUMP FED A 1H

*Located 190' FSL & 495' FEL
Section 21, Township 21 South, Range 30 East,
N.M.P.M., Eddy County, New Mexico.*

**basin
surveys**
focused on excellence
in the oilfield

P.O. Box 1786
1120 N. West County Rd.
Hobbs, New Mexico 88241
(575) 393-7316 - Office
(575) 392-2206 - Fax
basinsurveys.com

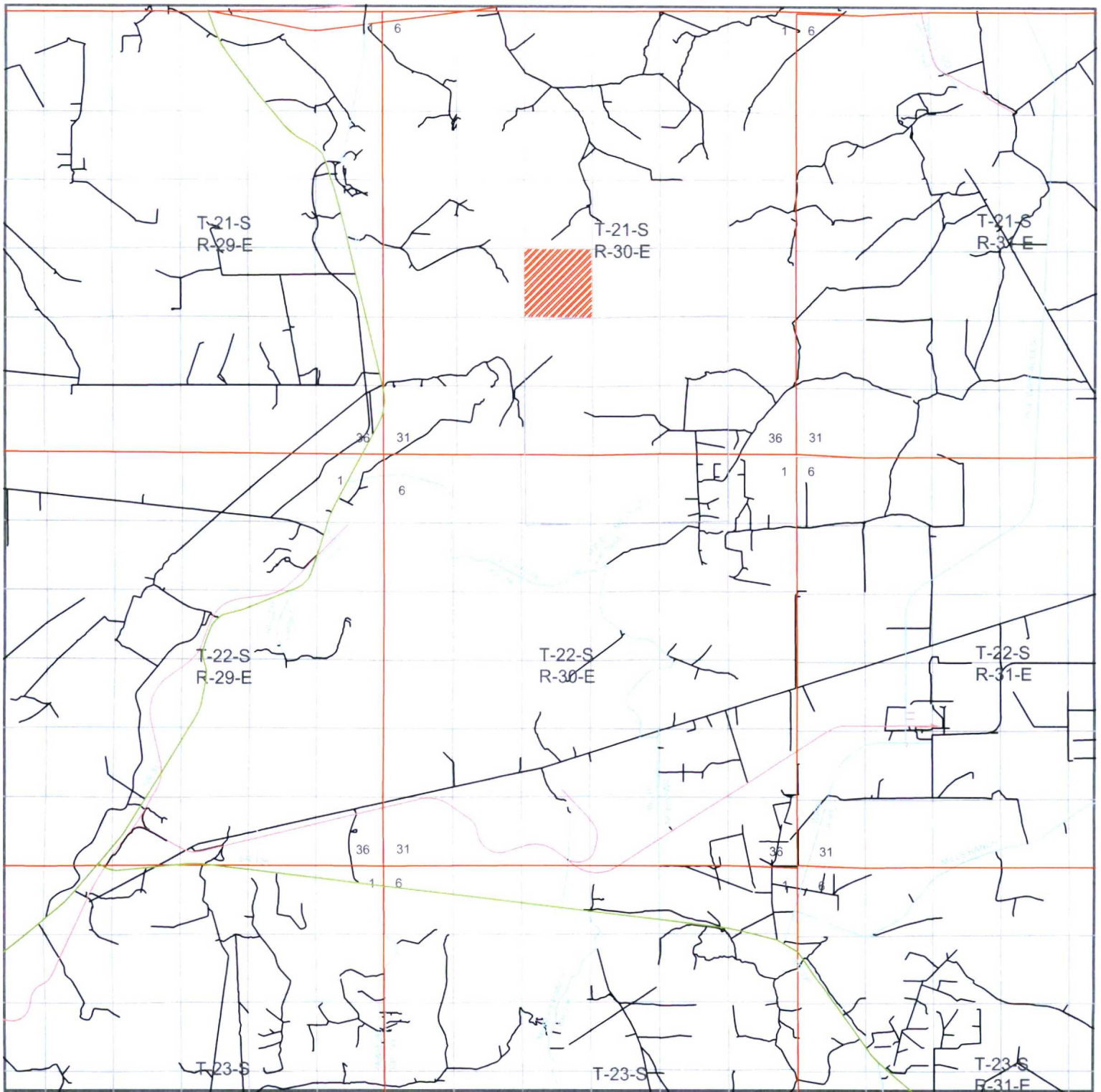
W.O. Number: JG - 33569

Scale: 1" = 2000'

YELLOW TINT - USA LAND
BLUE TINT - STATE LAND
NATURAL COLOR - FEE LAND



**TROVE
ENERGY,
LLC**



BUFFALO HUMP FED A 1H

Located 190' FSL & 495' FEL

*Section 21, Township 21 South, Range 30 East,
N.M.P.M., Eddy County, New Mexico.*

**basin
surveys**
focused on excellence
in the oilfield

P.O. Box 1786
1120 N. West County Rd.
Hobbs, New Mexico 88241
(575) 393-7316 - Office
(575) 392-2206 - Fax
basinsurveys.com

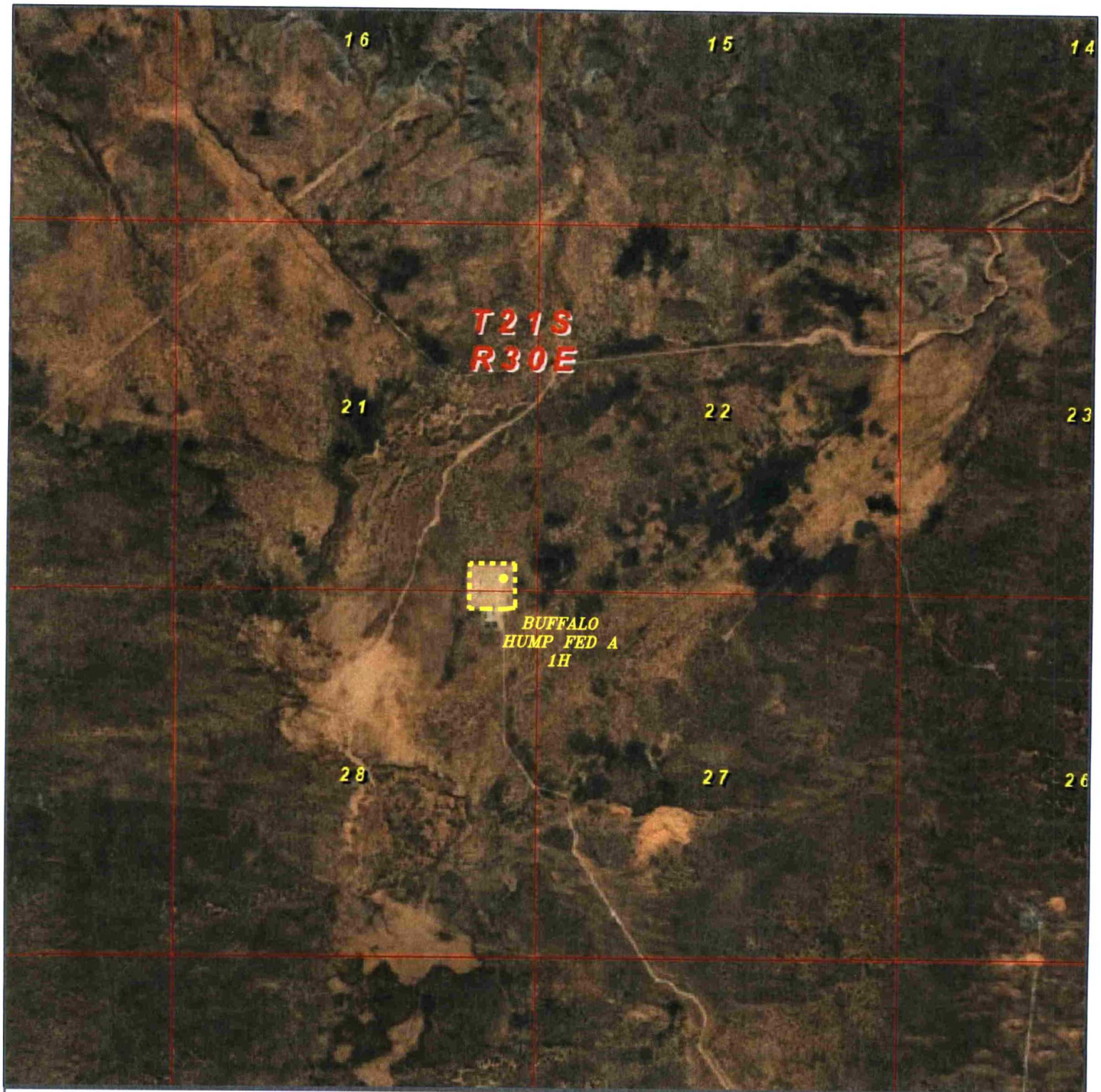
W.O. Number: JG - 33569

Scale: 1" = 2000'

YELLOW TINT - USA LAND
BLUE TINT - STATE LAND
NATURAL COLOR - FEE LAND



**TROVE
ENERGY,
LLC**



BUFFALO HUMP FED A 1H

*Located 190' FSL & 495' FEL
Section 21, Township 21 South, Range 30 East,
N.M.P.M., Eddy County, New Mexico.*



P.O. Box 1786
1120 N. West County Rd.
Hobbs, New Mexico 88241
(575) 393-7316 - Office
(575) 392-2206 - Fax
basinsurveys.com

W.O. Number: JG - 33569

Scale: 1" = 2000'

YELLOW TINT - USA LAND
BLUE TINT - STATE LAND
NATURAL COLOR - FEE LAND



**TROVE
ENERGY,
LLC**

DISTRICT I
1625 N. French Dr., Hobbs, NM 88240
Phone (575) 393-6161 Fax: (575) 393-0720

DISTRICT II
811 S. First St., Artesia, NM 88210
Phone (575) 748-1283 Fax: (575) 748-9720

DISTRICT III
1000 Rio Brazos Rd., Aztec, NM 87410
Phone (505) 334-6178 Fax: (505) 334-6170

DISTRICT IV
1220 S. St. Francis Dr., Santa Fe, NM 87505
Phone (505) 478-3333 Fax: (505) 478-3482

State of New Mexico
Energy, Minerals and Natural Resources Department

Form C-102
Revised August 1, 2011

Submit one copy to appropriate
District Office

OIL CONSERVATION DIVISION
1220 South St. Francis Dr.
Santa Fe, New Mexico 87505

WELL LOCATION AND ACREAGE DEDICATION PLAT

☐ AMENDED REPORT

API Number		Pool Code	Pool Name
Property Code	Property Name IRON JACKET FED B		Well Number 2H
OGRID No.	Operator Name TROVE ENERGY, LLC		Elevation 3148'

Surface Location

UL or lot No.	Section	Township	Range	Lot Idn	Feet from the	SOUTH/South line	Feet from the	East/West line	County
P	21	21 S	30 E		190	SOUTH	525	EAST	EDDY

Bottom Hole Location If Different From Surface

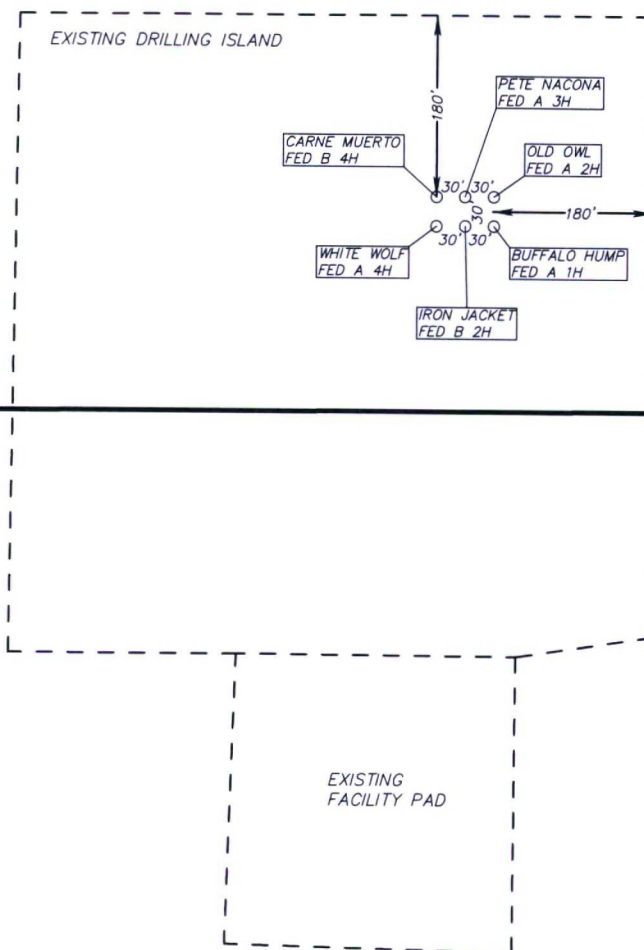
UL or lot No.	Section	Township	Range	Lot Idn	Feet from the	SOUTH/South line	Feet from the	East/West line	County
P	24	21 S	30 E		660	SOUTH	330	EAST	EDDY

Dedicated Acres	Joint or Infill	Consolidation Code	Order No.

NO ALLOWABLE WILL BE ASSIGNED TO THIS COMPLETION UNTIL ALL INTERESTS HAVE BEEN CONSOLIDATED
OR A NON-STANDARD UNIT HAS BEEN APPROVED BY THE DIVISION

<p>N.: 535745.0 E.: 676817.1 (NAD83)</p> <p>N.: 535755.4 E.: 682094.1 (NAD83)</p> <p>N.: 535774.5 E.: 687371.7 (NAD83)</p> <p>N.: 535788.7 E.: 692648.2 (NAD83)</p> <p>N.: 533160.5 E.: 697949.2 (NAD83)</p> <p>N.: 530468.4 E.: 676838.5 (NAD83)</p> <p>N.: 530474.8 E.: 682115.9 (NAD83)</p> <p>N.: 530493.6 E.: 687393.2 (NAD83)</p> <p>N.: 530502.5 E.: 692668.7 (NAD83)</p> <p>N.: 530520.3 E.: 697958.8 (NAD83)</p> <p>SURFACE LOCATION Lat - N 32.458039° Long - W 103.878615° NMSPCE- N 530664.2 E 681590.3 (NAD-83)</p> <p>BOTTOM HOLE LOCATION Lat - N 32.459256° Long - W 103.826617° NMSPCE- N 531179.0 E 697626.5 (NAD-83)</p>	<p>OPERATOR CERTIFICATION I hereby certify that the information contained herein is true and complete to the best of my knowledge and belief, and that this organization either owns a working interest or unLEASED mineral interest in the land including the proposed bottom hole location or has a right to drill this well at this location pursuant to a contract with an owner of such a mineral or working interest, or to a voluntary pooling agreement or a compulsory pooling order heretofore entered by the division.</p> <p>Signature _____ Date _____</p> <p>Printed Name _____</p> <p>Email Address _____</p> <p>SURVEYOR CERTIFICATION I hereby certify that the well location shown on this plat was plotted from field notes of actual surveys made by me or under my supervision, and that the same is true and correct to the best of my belief.</p> <p>MARCH 13 2018 NEW MEXICO 7977 Date Surveyed _____ Signature & Seal of Professional Surveyor _____ Certificate No. 7977 BASIN SERVICES</p> <p>0' 2000' 4000' 6000' 8000' IN SCALE: 1" = 4000' WO Num.: 33581</p>
---	---

**SECTION 21, TOWNSHIP 21 SOUTH, RANGE 30 EAST. N.M.P.M.,
EDDY COUNTY, NEW MEXICO.**

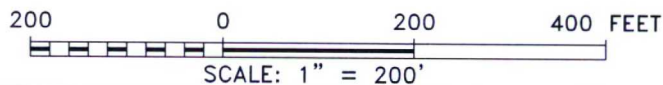


SECTION 21
SECTION 28

TROVE ENERGY, LLC
IRON JACKET FED B 2H
ELEV. - 3148'

Lat - N 32.458039°
Long - W 103.878615°
NMSPCE- N 530664.2
E 681590.3
(NAD-83)

CARLSBAD, NM IS ±20 MILES TO THE WEST-SOUTHWEST OF LOCATION.



TROVE ENERGY, LLC

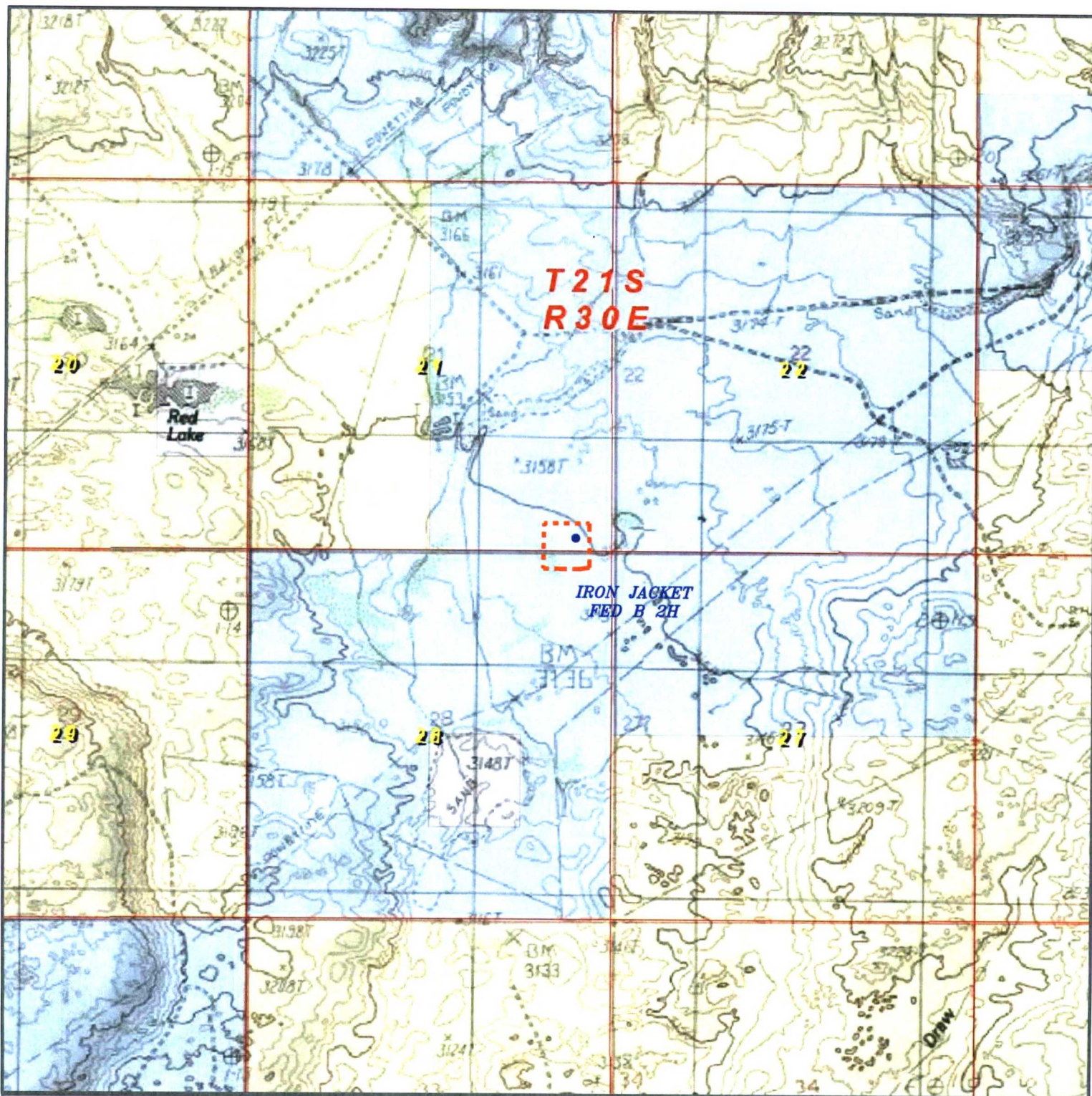
REF: IRON JACKET FED B 2H / WELL PAD TOPO

THE IRON JACKET FED B 2H LOCATED 190' FROM
THE SOUTH LINE AND 525' FROM THE EAST LINE OF
SECTION 21, TOWNSHIP 21 SOUTH, RANGE 30 EAST.

N.M.P.M., EDDY COUNTY, NEW MEXICO.



P.O. Box 1786 (575) 393-7316 - Office
1120 N. West County Rd. (575) 392-2206 - Fax
Hobbs, New Mexico 88241 basin-surveys.com



IRON JACKET FED B 2H

*Located 190' FSL & 525' FEL
Section 21, Township 21 South, Range 30 East,
N.M.P.M., Eddy County, New Mexico.*



P.O. Box 1786
1120 N. West County Rd.
Hobbs, New Mexico 88241
(575) 393-7316 - Office
(575) 392-2206 - Fax
basinsurveys.com

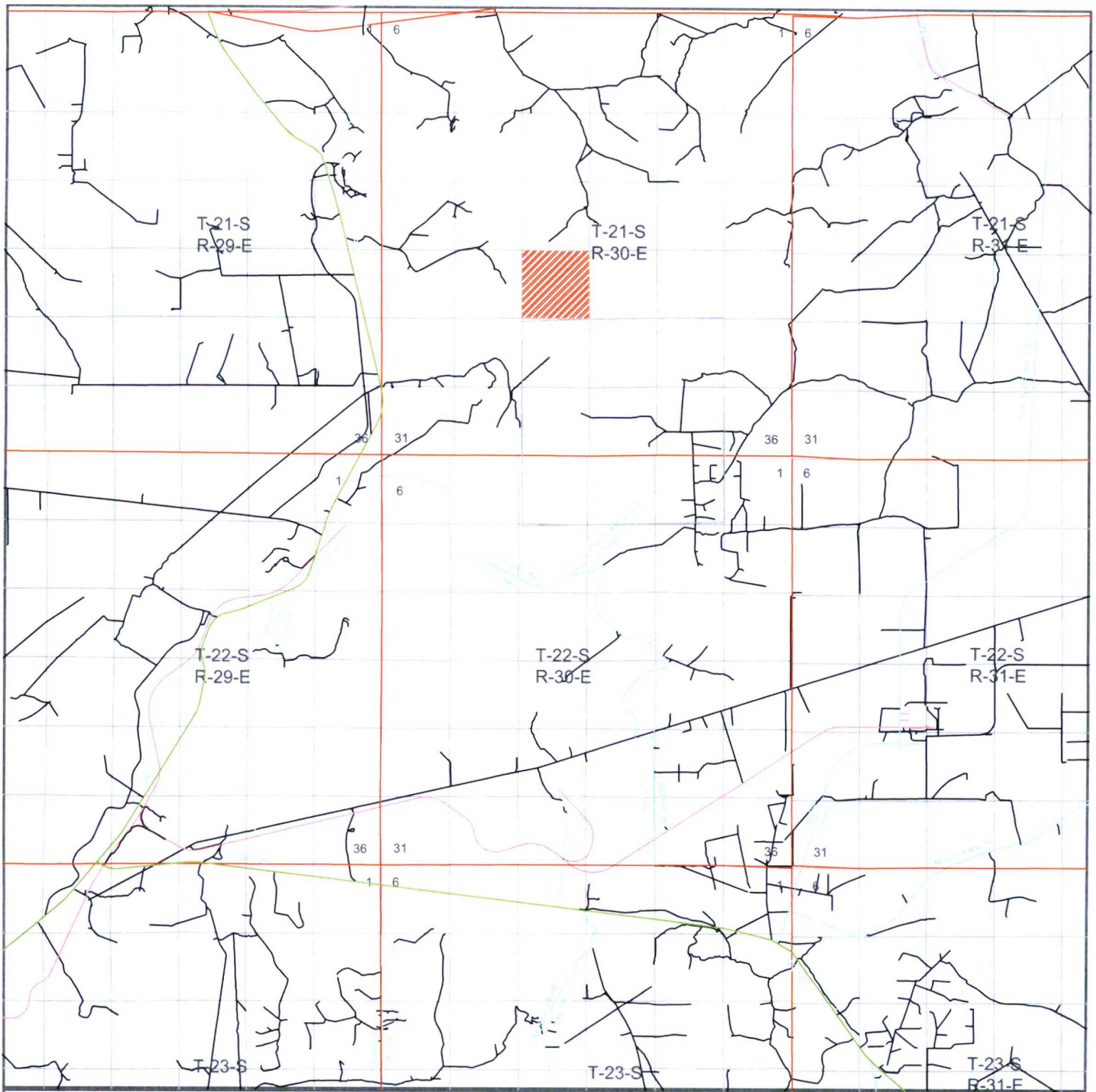
W.O. Number: JG - 33581

Scale: 1" = 2000'

YELLOW TINT - USA LAND
BLUE TINT - STATE LAND
NATURAL COLOR - FEE LAND



**TROVE
ENERGY,
LLC**



IRON JACKET FED B 2H

*Located 190' FSL & 525' FEL
Section 21, Township 21 South, Range 30 East,
N.M.P.M., Eddy County, New Mexico.*

**basin
surveys**
focused on excellence
in the oilfield

P.O. Box 1786
1120 N. West County Rd.
Hobbs, New Mexico 88241
(575) 393-7316 - Office
(575) 392-2206 - Fax
basinsurveys.com

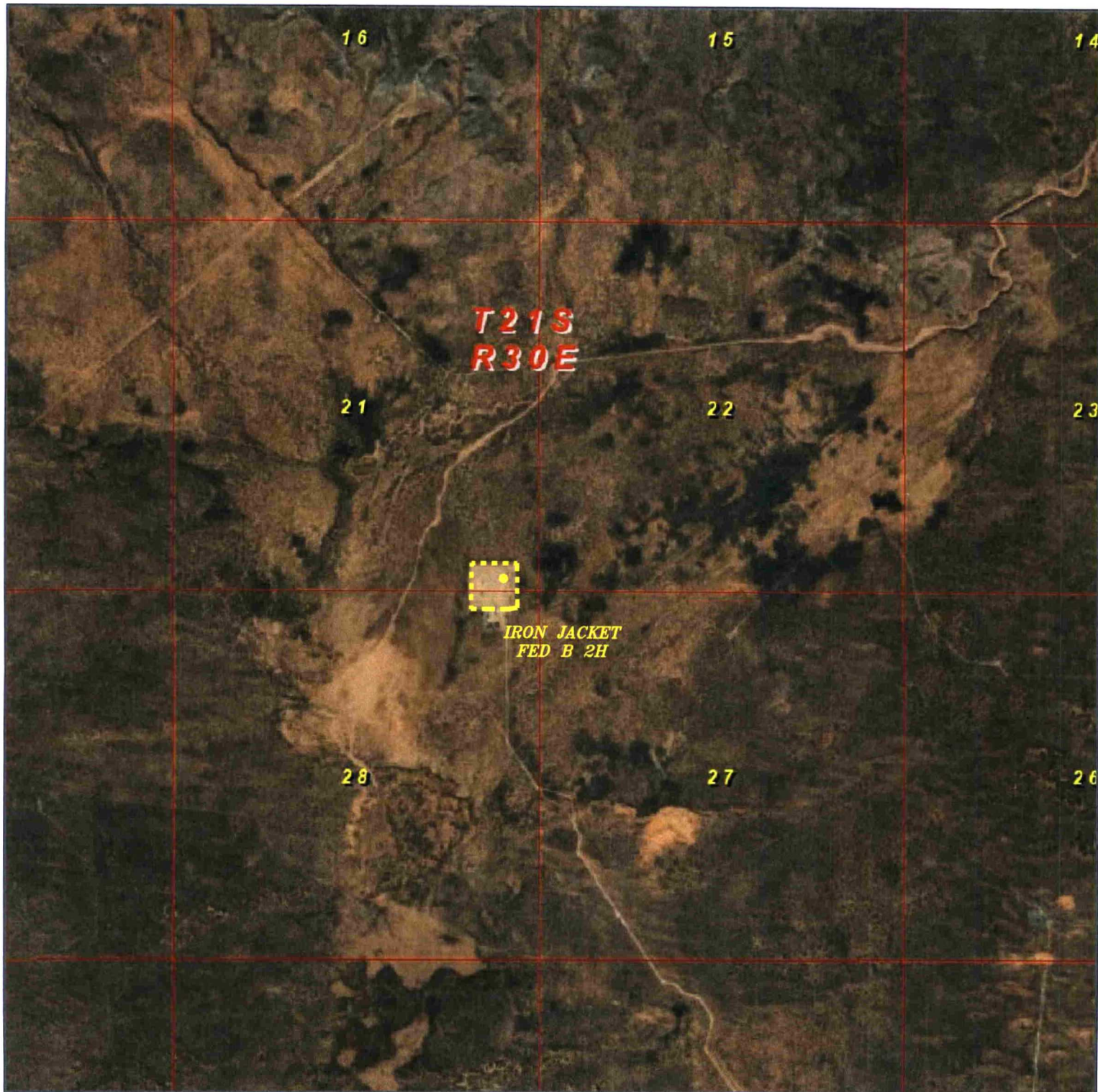
W.O. Number: JG - 33581

Scale: 1" = 2000'

YELLOW TINT - USA LAND
BLUE TINT - STATE LAND
NATURAL COLOR - FEE LAND



**TROVE
ENERGY,
LLC**



IRON JACKET FED B 2H

*Located 190' FSL & 525' FEL
Section 21, Township 21 South, Range 30 East,
N.M.P.M., Eddy County, New Mexico.*

**basin
surveys**
focused on excellence
in the oilfield

P.O. Box 1786
1120 N. West County Rd.
Hobbs, New Mexico 88241
(575) 393-7316 - Office
(575) 392-2206 - Fax
basinsurveys.com

W.O. Number: JG - 33581

Scale: 1" = 2000'

YELLOW TINT - USA LAND
BLUE TINT - STATE LAND
NATURAL COLOR - FEE LAND



**TROVE
ENERGY,
LLC**

DISTRICT IV
1220 S. St. Francis Dr., Santa Fe, NM 87505
Phone (505) 478-333 Fax: (505) 478-3482

Form C-102
Revised August 1, 2011

Submit one copy to appropriate
District Office

1220 South St. Francis Dr.
Santa Fe, New Mexico 87501

☐ AMENDED REPORT

API Number		Pool Code	Pool Name
Property Code	Property Name OLD OWL FED A		Well Number 2H
OGRID No.	Operator Name TROVE ENERGY, LLC		Elevation 3148'

Surface Location

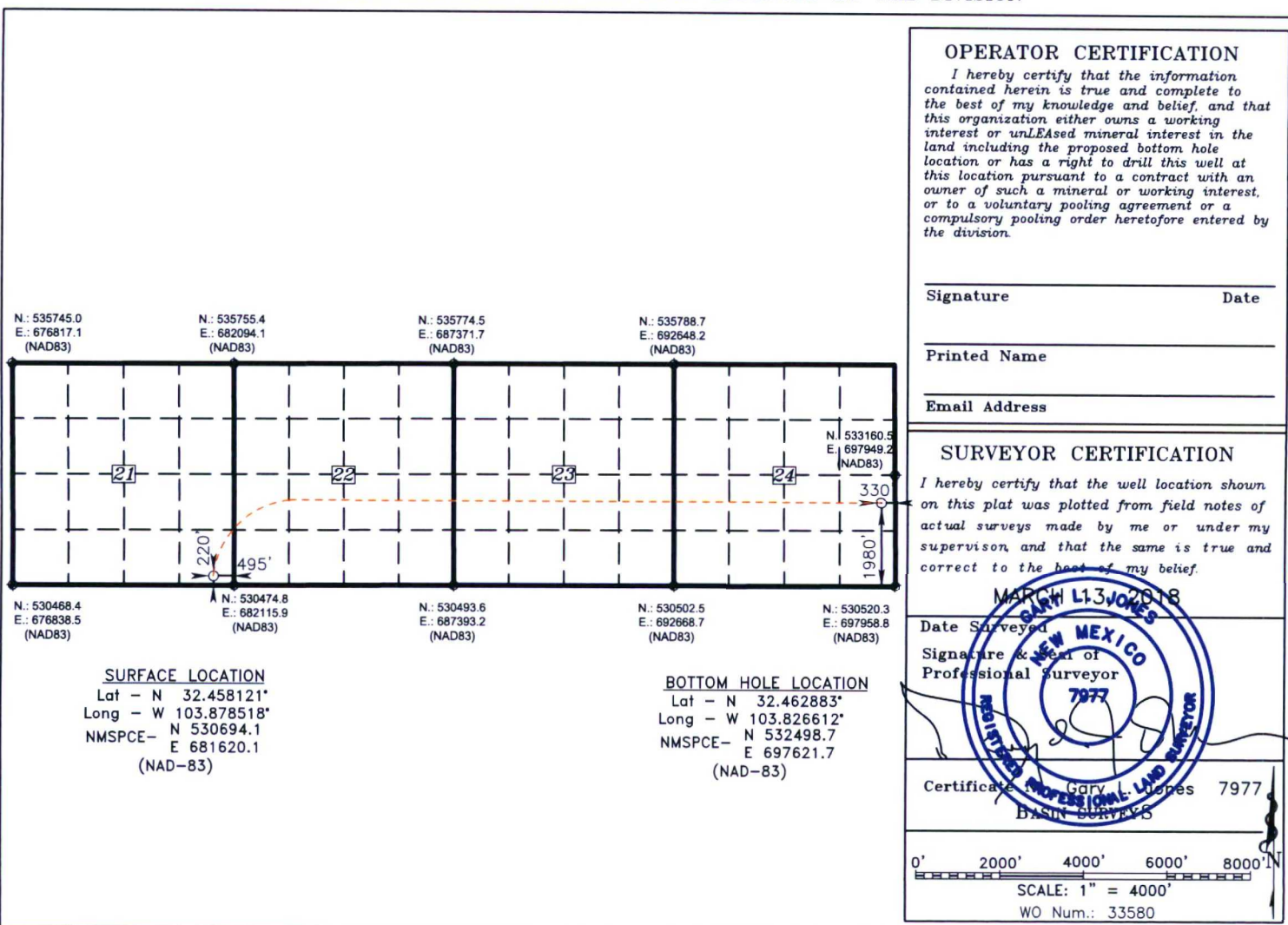
UL or lot No.	Section	Township	Range	Lot Idn	Feet from the	SOUTH/South line	Feet from the	East/West line	County
P	21	21 S	30 E		220	SOUTH	495	EAST	EDDY

Bottom Hole Location If Different From Surface

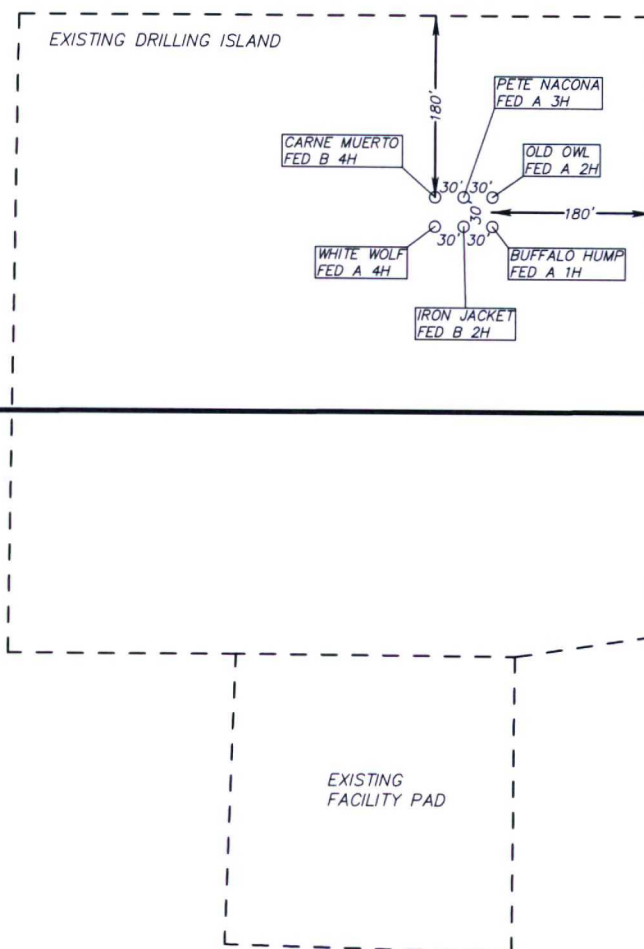
UL or lot No.	Section	Township	Range	Lot Idn	Feet from the	SOUTH/South line	Feet from the	East/West line	County
I	24	21 S	30 E		1980	SOUTH	330	EAST	EDDY

Dedicated Acres	Joint or Infill	Consolidation Code	Order No.
-----------------	-----------------	--------------------	-----------

NO ALLOWABLE WILL BE ASSIGNED TO THIS COMPLETION UNTIL ALL INTERESTS HAVE BEEN CONSOLIDATED
OR A NON-STANDARD UNIT HAS BEEN APPROVED BY THE DIVISION



**SECTION 21, TOWNSHIP 21 SOUTH, RANGE 30 EAST. N.M.P.M.,
EDDY COUNTY, NEW MEXICO.**

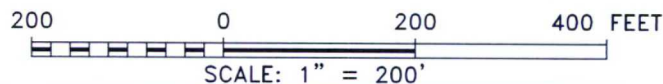


SECTION 21
SECTION 28

TROVE ENERGY, LLC
OLD OWL FED A 2H
ELEV. - 3148'

Lat - N 32.458121°
Long - W 103.878518°
NMSPCE- N 530694.1
E 681620.1
(NAD-83)

CARLSBAD, NM IS ±20 MILES TO THE WEST-SOUTHWEST OF LOCATION.



TROVE ENERGY, LLC

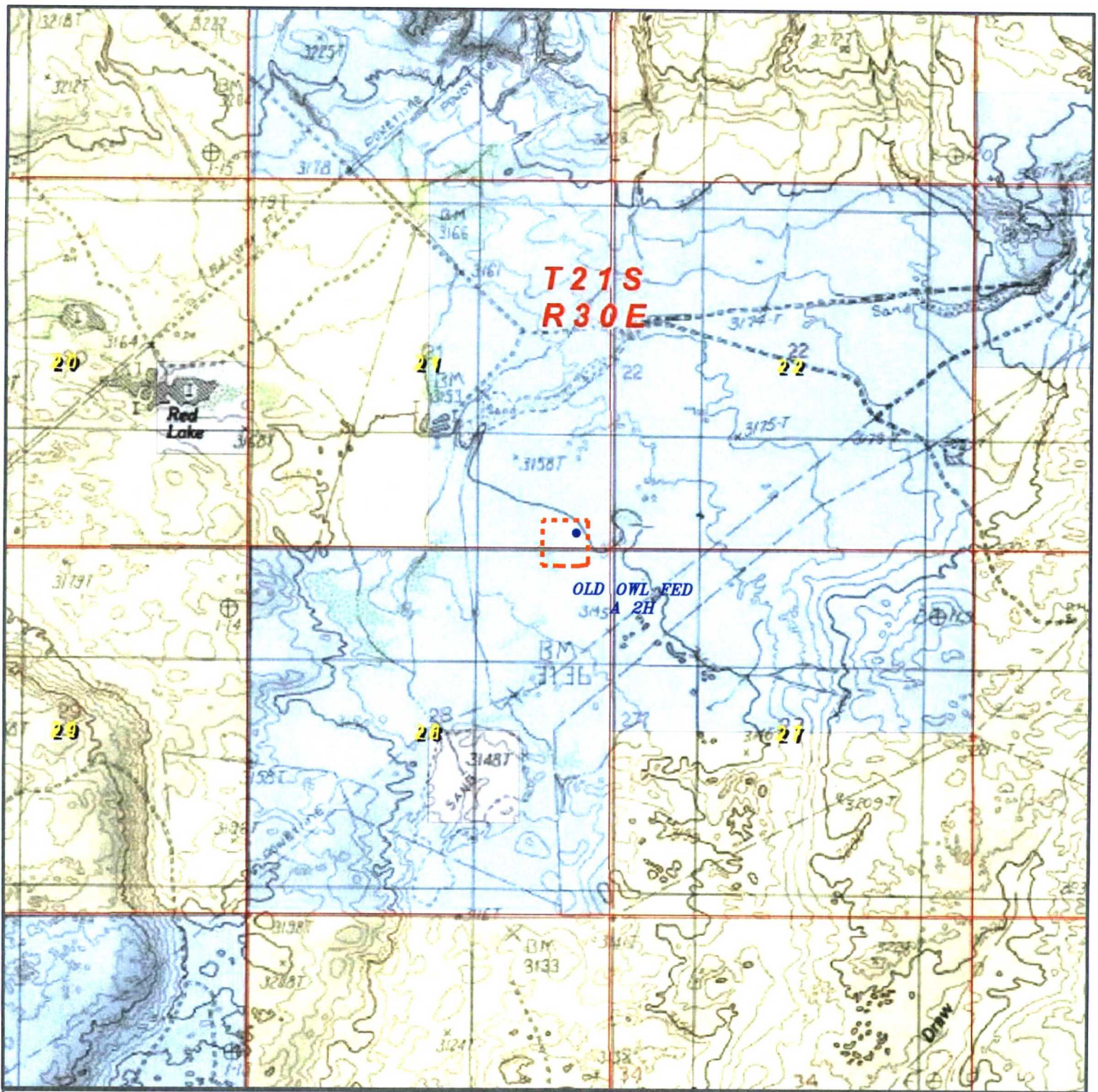
REF: OLD OWL FED A 2H / WELL PAD TOPO

THE OLD OWL FED A 2H LOCATED 220' FROM
THE SOUTH LINE AND 495' FROM THE EAST LINE OF
SECTION 21, TOWNSHIP 21 SOUTH, RANGE 30 EAST.

N.M.P.M., EDDY COUNTY, NEW MEXICO.



P.O. Box 1786 (575) 393-7316 - Office
1120 N. West County Rd. (575) 392-2206 - Fax
Hobbs, New Mexico 88241 basin-surveys.com



OLD OWL FED A 2H

*Located 220' FSL & 495' FEL
Section 21, Township 21 South, Range 30 East,
N.M.P.M., Eddy County, New Mexico.*

**basin
surveys**
focused on excellence
in the oilfield

P.O. Box 1786
1120 N. West County Rd.
Hobbs, New Mexico 88241
(575) 393-7316 - Office
(575) 392-2206 - Fax
basinsurveys.com

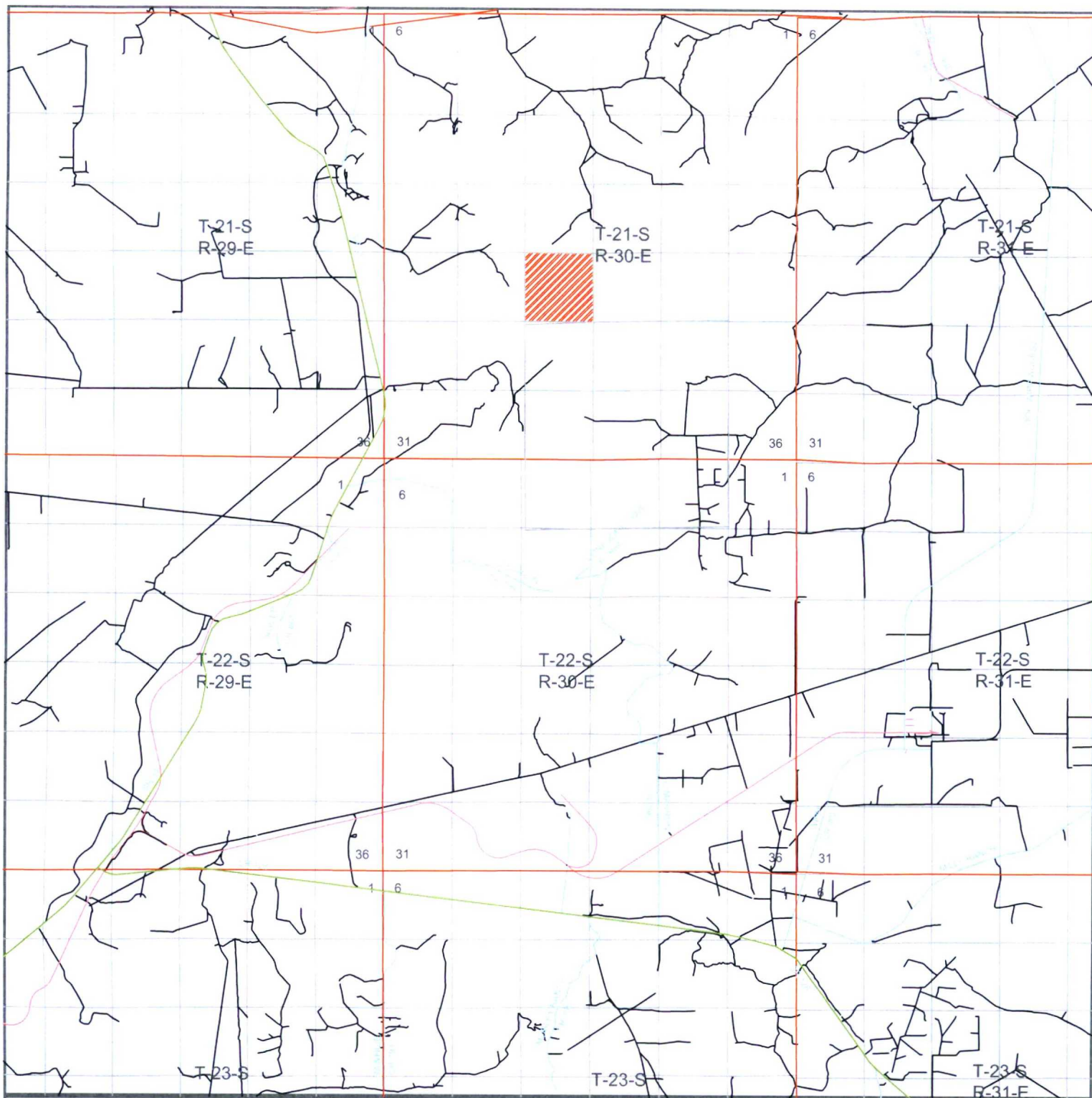
W.O. Number: JG - 33580

Scale: 1" = 2000'

YELLOW TINT - USA LAND
BLUE TINT - STATE LAND
NATURAL COLOR - FEE LAND



**TROVE
ENERGY,
LLC**



OLD OWL FED A 2H

*Located 220' FSL & 495' FEL
Section 21, Township 21 South, Range 30 East,
N.M.P.M., Eddy County, New Mexico.*



P.O. Box 1786
1120 N. West County Rd.
Hobbs, New Mexico 88241
(575) 393-7316 - Office
(575) 392-2206 - Fax
basinsurveys.com

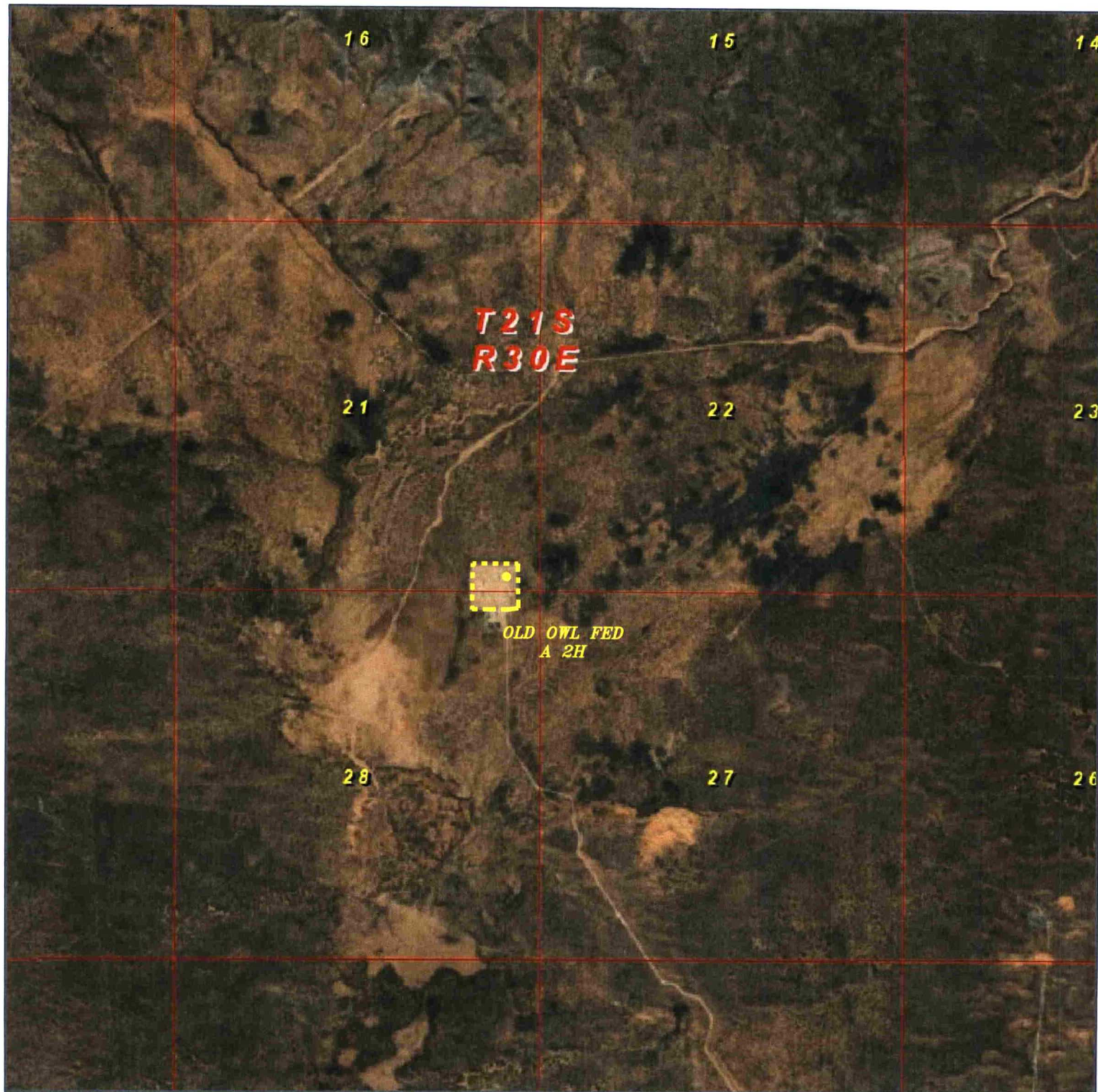
W.O. Number: JG - 33580

Scale: 1" = 2000'

YELLOW TINT - USA LAND
BLUE TINT - STATE LAND
NATURAL COLOR - FEE LAND

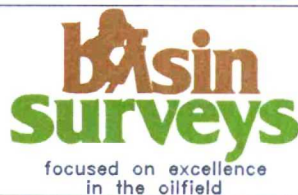


**TROVE
ENERGY,
LLC**



OLD OWL FED A 2H

*Located 220' FSL & 495' FEL
Section 21, Township 21 South, Range 30 East,
N.M.P.M., Eddy County, New Mexico.*



P.O. Box 1786
1120 N. West County Rd.
Hobbs, New Mexico 88241
(575) 393-7316 - Office
(575) 392-2206 - Fax
basinsurveys.com

W.O. Number: JG - 33580

Scale: 1" = 2000'

YELLOW TINT - USA LAND
BLUE TINT - STATE LAND
NATURAL COLOR - FEE LAND



**TROVE
ENERGY,
LLC**

DISTRICT I
1625 N. French Dr., Hobbs, NM 88240
Phone (575) 393-8161 Fax: (575) 393-0720

DISTRICT II
811 S. First St., Artesia, NM 88210
Phone (575) 748-1283 Fax: (575) 748-9720

DISTRICT III
1000 Rio Brazos Rd., Aztec, NM 87410
Phone (505) 334-6178 Fax: (505) 334-6170

DISTRICT IV
1220 S. St. Francis Dr., Santa Fe, NM 87505
Phone (505) 476-3333 Fax: (505) 476-3462

State of New Mexico
Energy, Minerals and Natural Resources Department

Form C-102
Revised August 1, 2011

Submit one copy to appropriate
District Office

OIL CONSERVATION DIVISION
1220 South St. Francis Dr.
Santa Fe, New Mexico 87505

WELL LOCATION AND ACREAGE DEDICATION PLAT

☐ AMENDED REPORT

API Number		Pool Code	Pool Name
Property Code	Property Name WHITE WOLF FED A		Well Number 4H
OGRID No.	Operator Name TROVE ENERGY, LLC		Elevation 3148'

Surface Location

UL or lot No.	Section	Township	Range	Lot Idn	Feet from the	SOUTH/South line	Feet from the	East/West line	County
P	21	21 S	30 E		190	SOUTH	555	EAST	EDDY

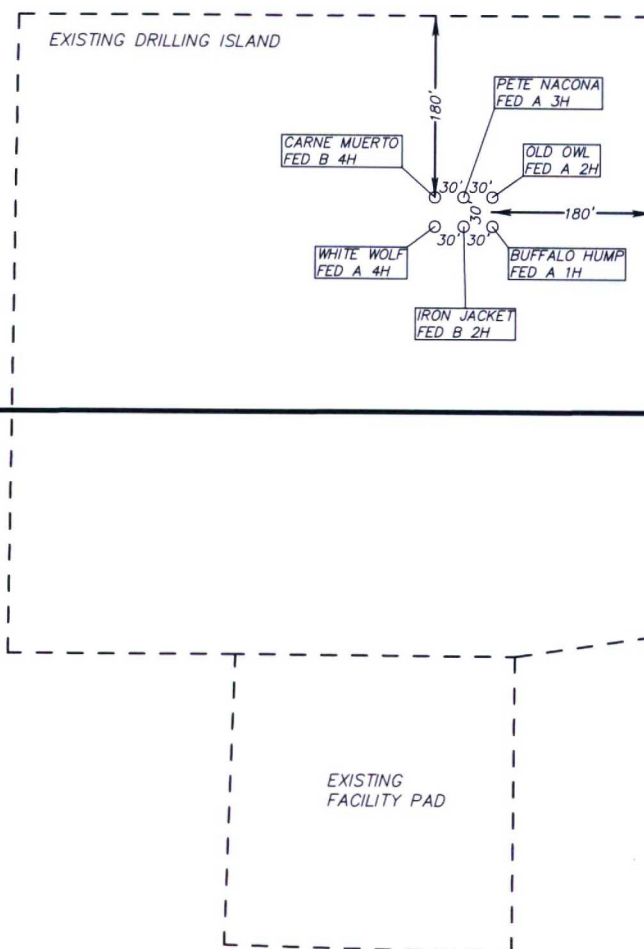
Bottom Hole Location If Different From Surface

UL or lot No.	Section	Township	Range	Lot Idn	Feet from the	SOUTH/South line	Feet from the	East/West line	County
P	24	21 S	30 E		660	SOUTH	330	EAST	EDDY
Dedicated Acres		Joint or Infill	Consolidation Code		Order No.				

NO ALLOWABLE WILL BE ASSIGNED TO THIS COMPLETION UNTIL ALL INTERESTS HAVE BEEN CONSOLIDATED
OR A NON-STANDARD UNIT HAS BEEN APPROVED BY THE DIVISION

<p>SURFACE LOCATION Lat - N 32.458039° Long - W 103.878711° NMSPC- N 530664.1 E 681560.4 (NAD-83)</p> <p>BOTTOM HOLE LOCATION Lat - N 32.459256° Long - W 103.826617° NMSPC- N 531179.0 E 697626.5 (NAD-83)</p>	<p>OPERATOR CERTIFICATION I hereby certify that the information contained herein is true and complete to the best of my knowledge and belief, and that this organization either owns a working interest or unLEASED mineral interest in the land including the proposed bottom hole location or has a right to drill this well at this location pursuant to a contract with an owner of such a mineral or working interest, or to a voluntary pooling agreement or a compulsory pooling order heretofore entered by the division.</p> <p>Signature _____ Date _____</p> <p>Printed Name _____</p> <p>Email Address _____</p>
	<p>SURVEYOR CERTIFICATION I hereby certify that the well location shown on this plat was plotted from field notes of actual surveys made by me or under my supervision and that the same is true and correct to the best of my belief.</p> <p>MARCH 13 2018 NEW MEXICO 7977 GARY L. JONES PROFESSIONAL SURVEYOR BASIN SERVICES</p>
	<p>Date Surveyed _____</p> <p>Signature & Seal of Professional Surveyor _____</p>
	<p>Certificate No. 7977</p> <p>Scale: 1" = 4000'</p> <p>WO Num.: 33583</p>

**SECTION 21, TOWNSHIP 21 SOUTH, RANGE 30 EAST. N.M.P.M.,
EDDY COUNTY, NEW MEXICO.**

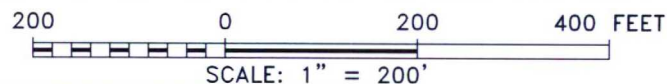


SECTION 21
SECTION 28

TROVE ENERGY, LLC
WHITE WOLF FED A 4H
ELEV. - 3148'

Lat - N 32.458039°
Long - W 103.878711°
NMSPCE- N 530664.1
E 681560.4
(NAD-83)

CARLSBAD, NM IS ±20 MILES TO THE WEST-SOUTHWEST OF LOCATION.



TROVE ENERGY, LLC

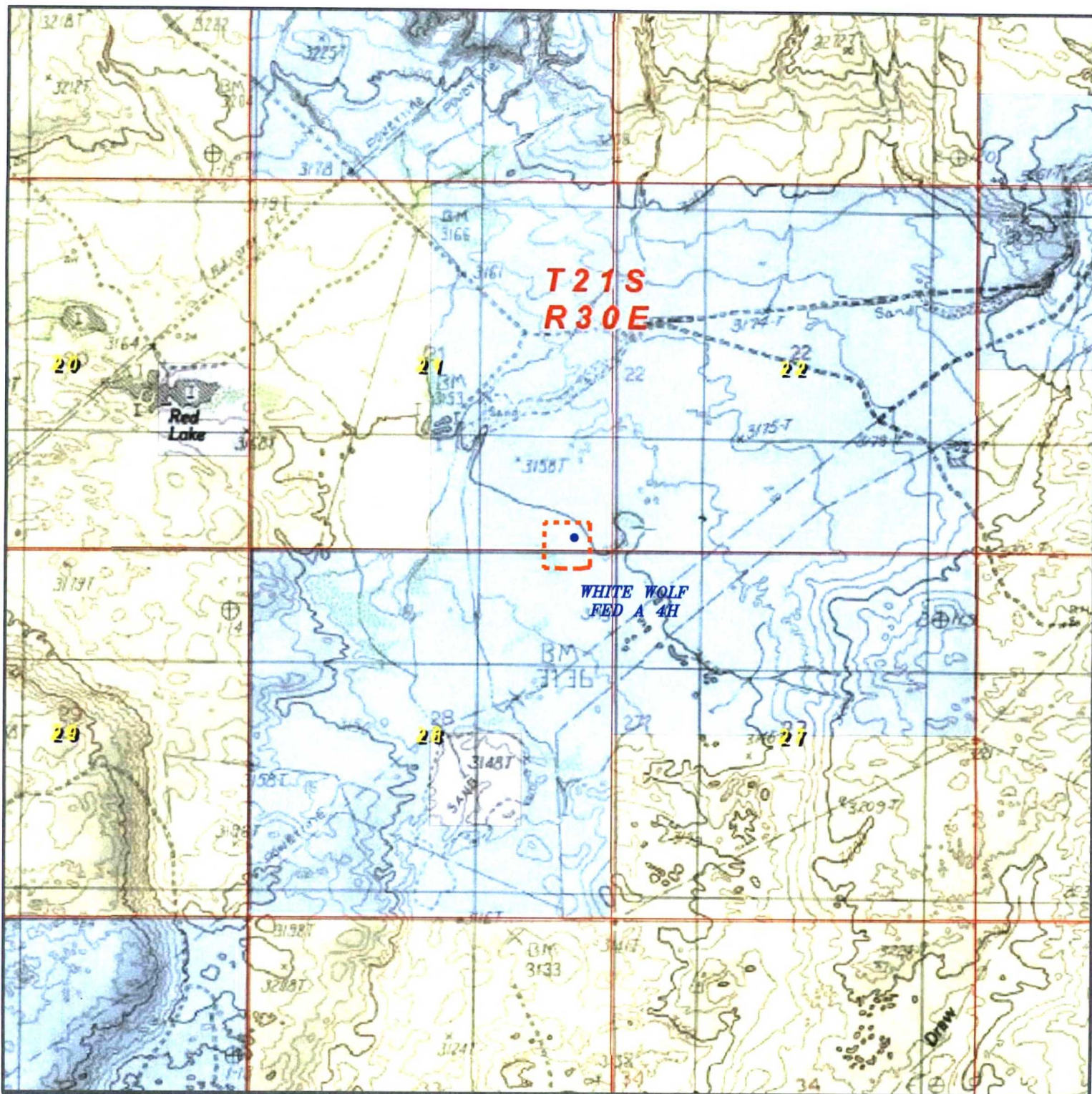
REF: WHITE WOLF FED A 4H / WELL PAD TOPO

THE WHITE WOLF FED A 4H LOCATED 190' FROM
THE SOUTH LINE AND 555' FROM THE EAST LINE OF
SECTION 21, TOWNSHIP 21 SOUTH, RANGE 30 EAST.

N.M.P.M., EDDY COUNTY, NEW MEXICO.

basin
surveys
focused on excellence
in the oilfield

P.O. Box 1786 (575) 393-7316 - Office
1120 N. West County Rd. (575) 392-2206 - Fax
Hobbs, New Mexico 88241 basin-surveys.com



WHITE WOLF FED A 4H

*Located 190' FSL & 555' FEL
Section 21, Township 21 South, Range 30 East,
N.M.P.M., Eddy County, New Mexico.*



P.O. Box 1786
1120 N. West County Rd.
Hobbs, New Mexico 88241
(575) 393-7316 - Office
(575) 392-2206 - Fax
basinsurveys.com

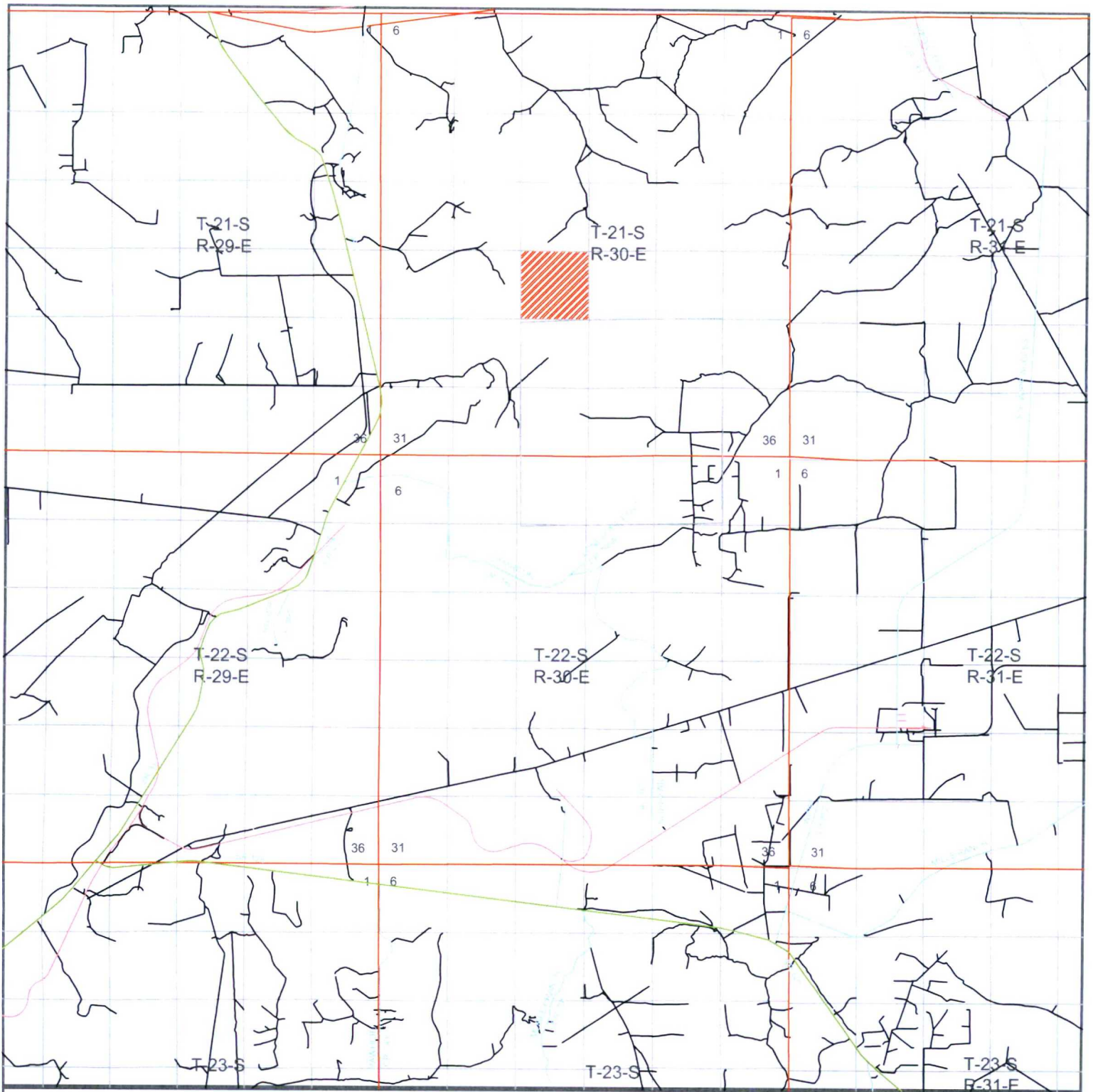
W.O. Number: JG - 33583

Scale: 1" = 2000'

YELLOW TINT - USA LAND
BLUE TINT - STATE LAND
NATURAL COLOR - FEE LAND



**TROVE
ENERGY,
LLC**



WHITE WOLF FED A 4H

Located 190' FSL & 555' FEL
 Section 21, Township 21 South, Range 30 East,
 N.M.P.M., Eddy County, New Mexico.

basin
surveys
 focused on excellence
 in the oilfield

P.O. Box 1786
 1120 N. West County Rd.
 Hobbs, New Mexico 88241
 (575) 393-7316 - Office
 (575) 392-2206 - Fax
basinsurveys.com

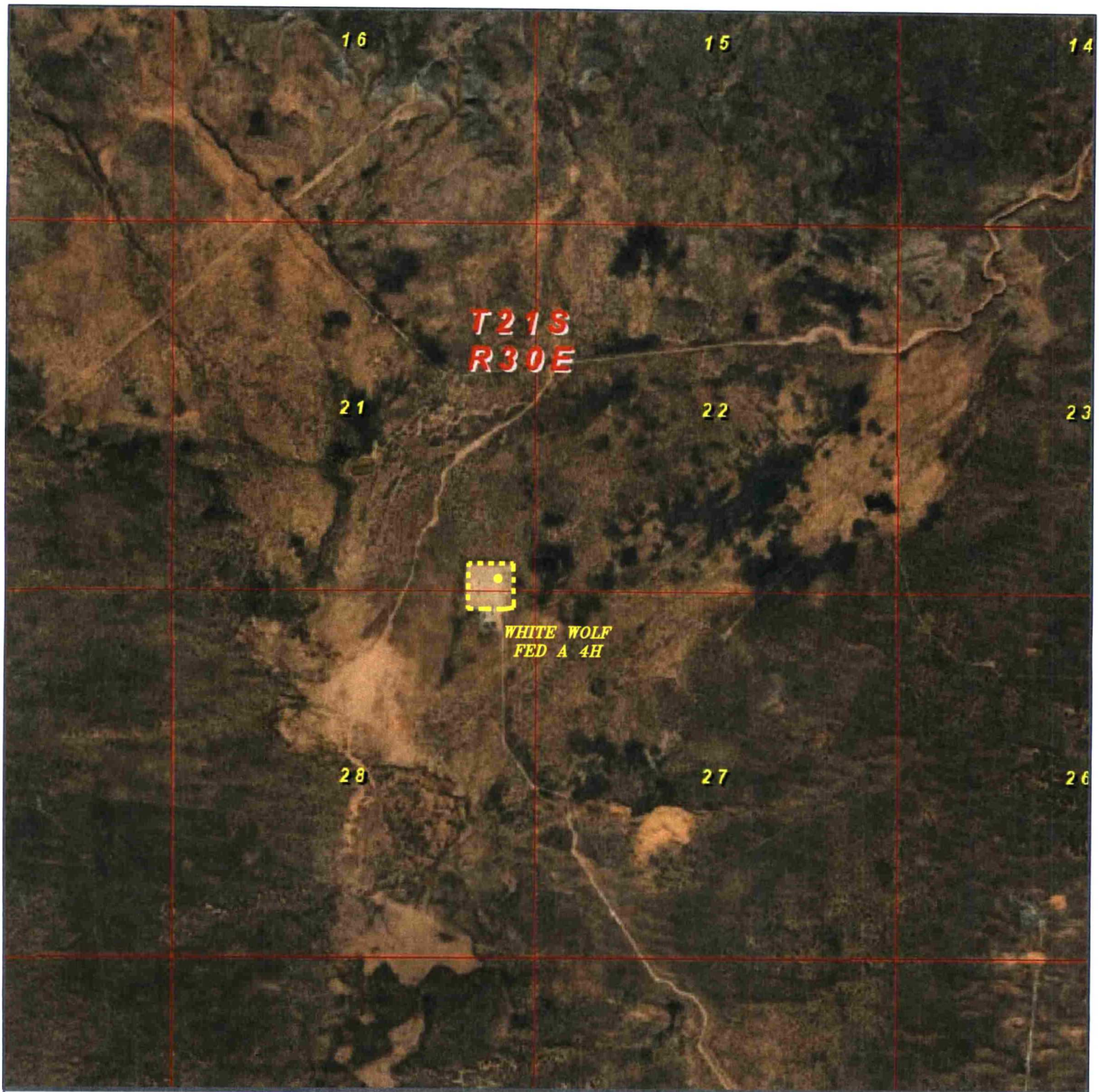
W.O. Number: JG - 33583

Scale: 1" = 2000'

YELLOW TINT - USA LAND
 BLUE TINT - STATE LAND
 NATURAL COLOR - FEE LAND



TROVE
ENERGY,
LLC



WHITE WOLF FED A 4H

*Located 190' FSL & 555' FEL
Section 21, Township 21 South, Range 30 East,
N.M.P.M., Eddy County, New Mexico.*



P.O. Box 1786
1120 N. West County Rd.
Hobbs, New Mexico 88241
(575) 393-7316 - Office
(575) 392-2206 - Fax
basinsurveys.com

W.O. Number: JG - 33583

Scale: 1" = 2000'

YELLOW TINT - USA LAND
BLUE TINT - STATE LAND
NATURAL COLOR - FEE LAND



**TROVE
ENERGY,
LLC**