



United States Department of the Interior

BUREAU OF LAND MANAGEMENT
Wyoming State Office Reservoir Management Group
2987 Prospector Drive
Casper, Wyoming 82604-2968



3186
(3186.1)
Nash Unit (NMNM70992X)

R-4794

FEB 08 2019

XTO Energy, Inc.
Attn: Vincent Cuccerre
Land Dept. W4.4A.285
22777 Springwoods Village Pkwy
Spring, TX 77389-1425

Re: Sixth Revision to the Delaware Formation Participating Area
Nash Unit
Eddy County, New Mexico

Gentlemen:

The sixth revision to the Delaware Formation Participating Area is hereby approved effective as of August 1, 2017, pursuant to Section 11 of the Nash Unit Agreement, Eddy County, New Mexico.

The application enlarges the Delaware Formation Participating Area from 4,482.26 acres to 5,122.86 acres and is based upon the completion of unit well 46H, located in the NE $\frac{1}{4}$ NW $\frac{1}{4}$ (SHL) of Section 18, T.23S., R.30E., unit tract No. 9, Lease No. NMNM0556857, and in the NW $\frac{1}{4}$ NE $\frac{1}{4}$ (BHL) of Section 6, T.23S., R.30E., unit tract No. 5, Lease No. NMNM019246, with an initial potential of 1,432 BOPD and 1,625 MCFPD on August 20, 2017, from the Delaware Formation.

Also, the application is based upon the completion of unit well 47H, located in the NE $\frac{1}{4}$ NW $\frac{1}{4}$ (SHL) of Section 18, T.23S., R.30E., unit tract No. 9, Lease No. NMNM0556857, and in the SE $\frac{1}{4}$ SE $\frac{1}{4}$ (BHL) of Section 6, T.23S., R.30E., unit tract No. 5, Lease No. NMNM019246, with an initial potential of 1,047 BOPD and 1,430 MCFPD on August 24, 2017, from the Delaware Formation.

Copies of the approved request are being distributed to the appropriate agencies and one copy of Exhibits "A" and "B" are returned herewith. Please advise all interested parties of the approval of the sixth revision to the Delaware Formation Participating Area effective as of August 1, 2017.

Any production royalties that are due must be reported and paid within 30 days of the Bureau of Land Management's approval date or the payors will be assessed interest for late payment under the Federal Oil and Gas Royalty Management Act of 1982 (30 CFR 218.54). If you need assistance or

clarification, please contact the Office of Natural Resources Revenue (ONRR) at 1-800-525-9167 or 303-231-3856.

If you have any questions, please call Lewis Tromp, Petroleum Engineer, at (307) 261-7628.

Sincerely,

/s/ J. David Chase

J. David Chase
Chief, Reservoir Management Group

1 Enclosure

Encl. 1 - Exhibits "A" and "B"

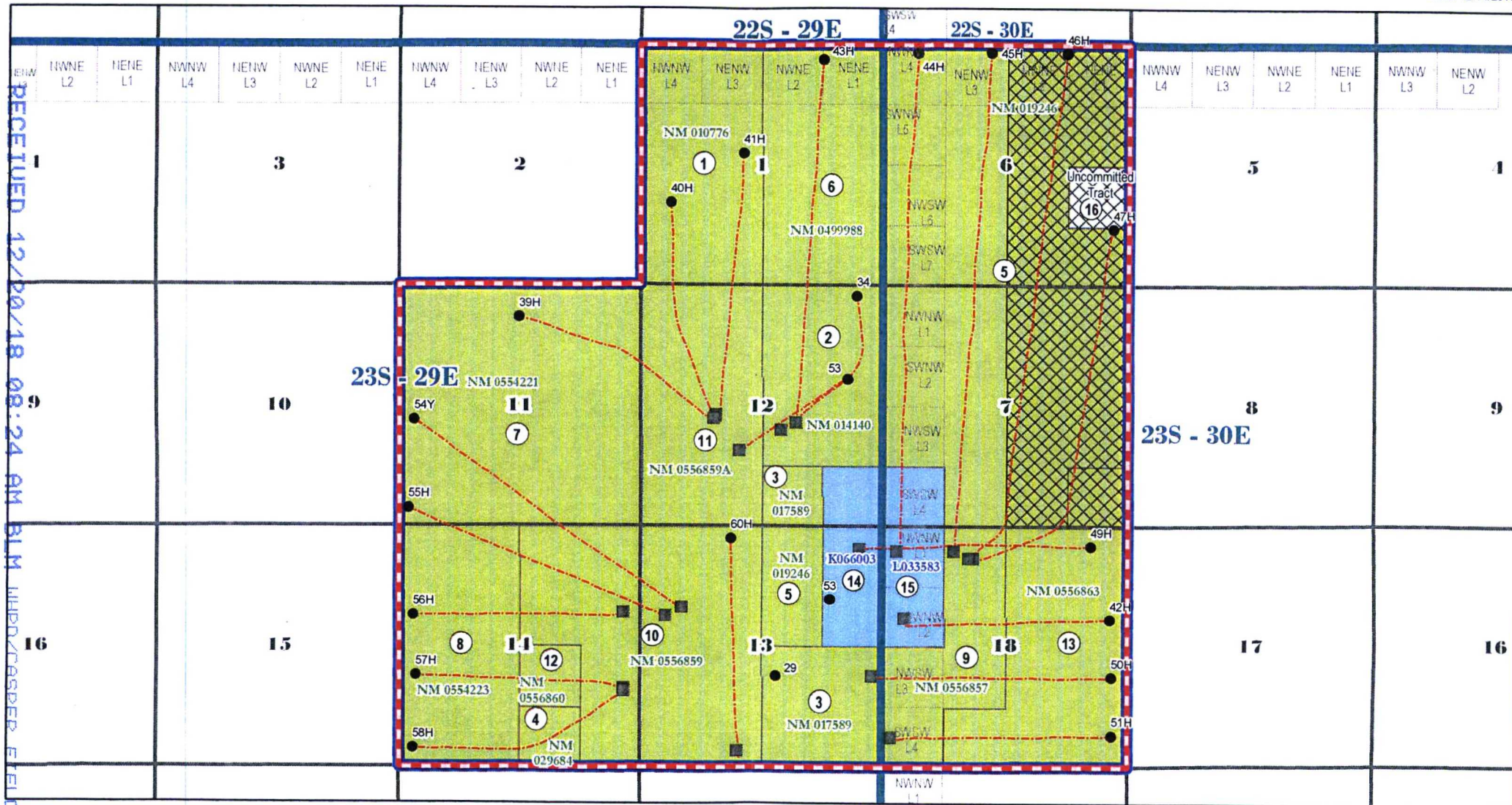
cc: NMSO, James Glover w/Encl. 1
CFO, Chris Walls w/Encl. 1
ONRR, Glen Reese w/Encl. 1
New Mexico State Land Office, Randy Bayliss w/Encl. 1
New Mexico Oil Conservation Division, William Jones w/Encl. 1



EXHIBIT "A"
6TH REVISION DELAWARE PARTICIPATING AREA
46H & 47H, NASH UNIT
EDDY COUNTY, NM
EFFECTIVE AUGUST 1, 2017



Date: 12/14/2018



- NASH UNIT OUTLINE
- CAPABLE WELL (SHL)
- CAPABLE WELL (BHL)
- CAPABLE WELLBORE
- PROPOSED DELAWARE PA
- FEDERAL ACREAGE WITHIN PA
- STATE ACREAGE WITHIN PA
- REVISED ACREAGE

0 0.5 1 2 3 Miles



EXHIBIT "B"
SCHEDULE OF LANDS AND TRACT PARTICIPATION
Sixth Revision Delaware Formation Participation Area
Nash Unit Agreement
Eddy County, New Mexico
Effective Date August 1, 2017

Tract No.	Lease No.	Description	Acres	Participation
1	NMNM10776 Federal	T-23S, R-29-E, NMPM Section 1: Lot 3 (39.62); Lot 4 (39.47); S/2NW/4; SW/4	319.09	6.2778%
2	NMNM14140 Federal	T-23S, R-29-E, NMPM Section 12: NE/4; N/2SE/4	240.00	4.7218%
3	NMNM17589 Federal	T-23S, R-29-E, NMPM Section 12: SW/4SE/4 Section 13: SE/4	200.00	3.9348%
4	NMNM29684 Federal	T-23S, R-29-E, NMPM Section 14: SW/4SE/4	40.00	0.7870%
5	NMNM19246 Federal	T-23S, R-29-E, NMPM Section 13: W/2NE/4 T-23S, R-30-E, NMPM Section 6: ALL, SAE NE/4SE/4 Section 7: Lot 1 (40.15); Lot 2 (40.13); Lot 3 (40.11); E/2W/2; NE/4; W/2SE/4; NE/4SE/4	1243.15	24.4575%
6	NMNM0499988 Federal	T-23S, R-29-E, NMPM Section 1: Lot 1 (39.92); Lot 2 (39.77); S/2NE/4; SE/4	319.69	6.2896%
7	NMNM0554221 Federal	T-23S, R-29-E, NMPM Section 11: ALL	640.00	12.5913%
8	NMNM0554223 Federal	T-23S, R-29-E, NMPM Section 14: W/2	320.00	6.2957%
9	NMNM0556857 Federal	T-23S, R-30-E, NMPM Section 18: Lot 3 (40.22); Lot 4 (40.25); E/2NW/4; NE/4SW/4	200.47	3.9440%
10	NMNM0556859 Federal	T-23S, R-29-E, NMPM Section 13: W/2 Section 14: NE/4; E/2SE/4	560.00	11.0174%
11	NMNM0556859-A Federal	T-23S, R-29-E, NMPM Section 12: W/2	320.00	6.2957%
12	NMNM0556860 Federal	T-23S, R-29-E, NMPM Section 14: NW/4SE/4	40.00	0.7870%
13	NMNM0556863 Federal	T-23S, R-30-E, NMPM Section 18: SE/4SW/4; E/2 Section 7: SE/4SE/4	400.00	7.8696%
14	K 6600 State	T-23S, R-29-E, NMPM Section 12: SE/4SE/4 Section: 13: E/2NE/4	120.00	2.3609%
15	L 3358 State	T-23S, R-30-E, NMPM Section 7: Lot 4 (40.09) Section: 18: Lot 1 (40.17); Lot 2 (40.20)	120.46	2.3699%
16	FEE Uncommitted	T-23S, R-30-E, NMPM Section 6: NE/4SE/4	40.00	0.0000%
Totals			5122.86	100.0000%

TYPE OF LAND	COMMITTED ACRES	NON-COMMITTED ACRES	PERCENT
FEDERAL	4842.40	0.00	95.2692%
STATE	240.46	0.00	4.7308%
PATENTED	0.00	40.00	0.0000%
TOTAL	5082.86	40.00	100.0000%